

# Geologic Report

Drilling Time and Sample Log

Operator <b>American Warrior, Inc.</b>		Elevation KB 2241'	
Lease SNS No. <b>1-7</b>		DF 2235'	
API # <b>15-145-21748-0000</b>		Casing Record Surface 8 5/8" @ 222'	
Field <b>Ben</b>		Production None	
Location <b>2430' FNL &amp; 770' FWL</b>		Electrical Surveys None	
Sec. <b>7</b>	Twp. <b>20s</b>	Rge. <b>20w</b>	
County <b>Pawnee</b>	State <b>Kansas</b>		
<b>Formation</b>	<b>Log Tops</b>	<b>Sample Tops</b>	<b>Struct Comp</b>
Anhydrite		1437' +804	+3
Base		1465' +776	
Heebner		3755' -1514	+5
Lansing		3806' -1565	FL
BKc		4138' -1897	
Pawnee		4266' -2025	
Fort Scott		4296' -2055	
Cherokee		4311' -2070	
Mississippian		4375' -2134	-3
Total Depth		4388' -2147	
Reference Well For Structural Comparison <b>American Energy Corp. Smith #1</b> C SW NW Sec. 7 T20s R20w Pawnee Co. Kansas			

Drilling Contractor	Petromark Drilling, LLC. Rig #1		
Commenced	3-17-2014	Completed	3-24-2014
Samples Saved From	4000'	To	RTD
Drilling Time Kept From	3700'	To	RTD
Samples Examined From	4000'	To	RTD
Geological Supervision From	4000'	To	RTD

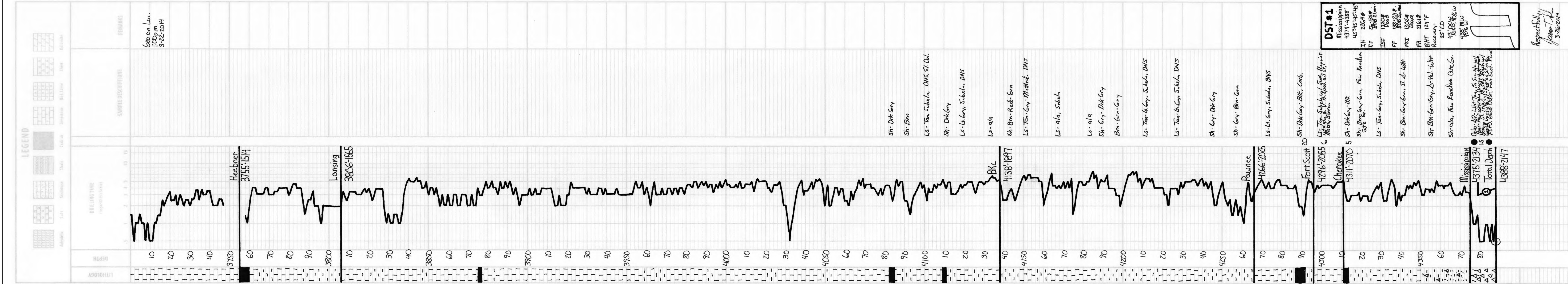
Displacement **3600'** Mud Type **Chemical**

### Summary and Recommendations

The location for the SNS #1-7 was found via 3-D seismic survey. The new well ran structurally as expected via the survey. One drill stem test was conducted which was negative. After all gathered data had been examined the decision was made to plug and abandon the SNS #1-7 well.

Respectfully Submitted,

Jason T Alm  
Hard Rock Consulting, Inc.



<b>DST #1</b>	
Mississippian	4375'-2134'
Fort Scott	4296'-2055'
Cherokee	4311'-2070'
Pawnee	4266'-2025'
Lansing	3806'-1565'
Heebner	3755'-1514'
Base	1465'-776'
Anhydrite	1437'-804'
Surface	2241'
DF	2235'
ISF	2082'
ISL	1320'
FF	1808'
FST	1305'
FH	2161'
BHT	121' F
Recovery	25' CO
	4108' 10% W
	485' MU
	485' W

Respectfully,  
Jason T Alm  
3-26-2014