

GEOLOGIST'S REPORT

DRILLING TIME AND SAMPLE LOG

BACH OIL PRODUCTION

WELL: OFB #1

LOC.: 1045' FSL & 400' FEL
 SEC. 2-1-19W
 PHILLIPS COUNTY, KANSAS
 API: 15-147-20732-00-00

DRILLING CONTR.: MURFIN RIG #24
 SPUD: 1-28-14 COMP: 02-01-14
 MUD UP: 2800' TYPE MUD: CHEM.
 DRILL TIME: 2900 to' RTD
 RTD: 3478' LTD: 3468'
 SAMPLES SAVED: 2900'-RTD
 GEOLOGIST: ROBERT J. PETERSEN

ELEVATION

KB: 2011
 GL: 2006
 LOG MEASURED
 FROM: KB

SURFACE CASING

20# 8 5/8 "
 Casing set @ 218'
 w/175 SX

PRODUCTION CASING

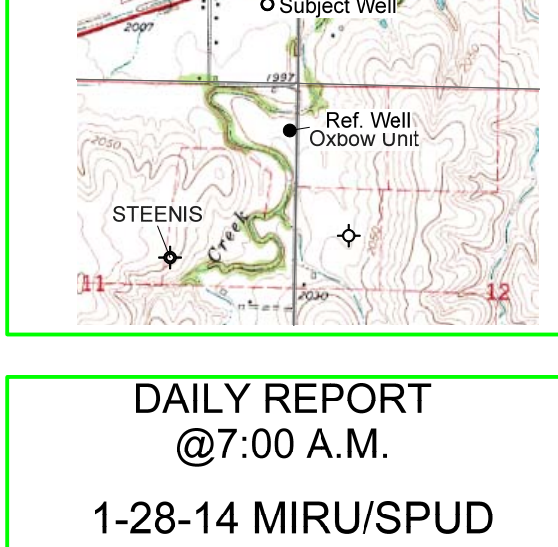
5 1/2" Casing set

WELL LOG SURVEYS

DIL/CDL/MICRO

ELECTRIC LOG TOPS

FORMATION	DEPTH	DATUM	POSITION
Stone Corral	1670	+341	-25
Base Stone Corral	1674	+337	-6
Topeka	3014	-1003	-9
Heebner	3215	-1204	-7
Toronto	3245	-1234	-9
Lansing	3261	-1250	-7
Muncie Creek	3374	-1363	-9
Stark	3438	-1427	-9
LTD	3478	-1467	24



REFERENCE WELL:

Ref. Well A
 Bach
 Oxbow Unit #1
 2000' FNL & 100' FEL
 11-1-19W

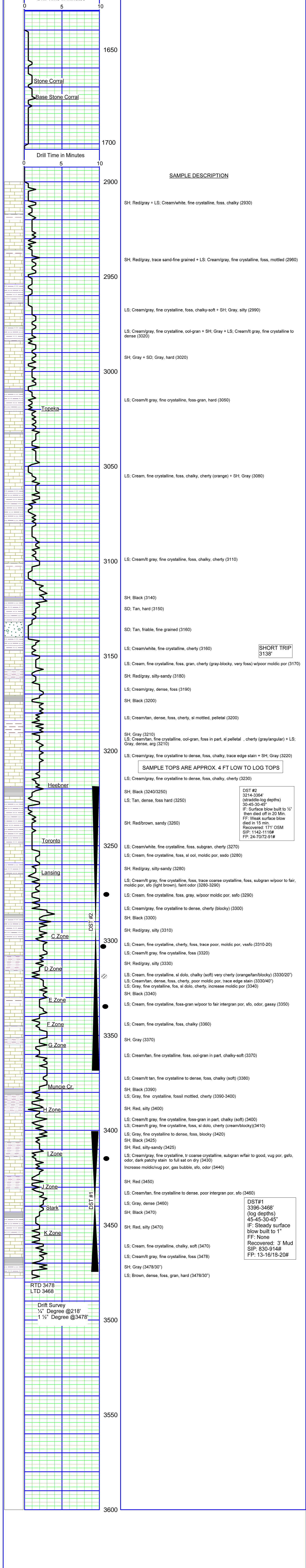
REMARKS AND RECOMMENDATIONS

Production casing was set to further test this well.

Respectfully submitted,
Robert J. Petersen
 Robert J. Petersen

DAILY REPORT @7:00 A.M.

1-28-14 MIRU/SPUD
 1-29-14 350'
 1-30-14 2270'
 1-31-14 3250'
 2-1-14 3478' (logging)



SHORT TRIP
 3138'

DST #2
 3214-3364'
 (straddle-log depths)
 30-45-30-45"
 IF: Surface blow built to 1/2" then died off in 20 Min.
 FF: Weak surface blow died in 15 min.
 Recovered: 171' OSM
 SIP: 1142-1116#
 FP: 24-70/72-91#

DST #1
 3396-3468'
 (log depths)
 45-45-30-45"
 IF: Steady surface blow built to 1" FF: None
 Recovered: 3' Mud
 SIP: 830-914#
 FP: 13-16/18-20#