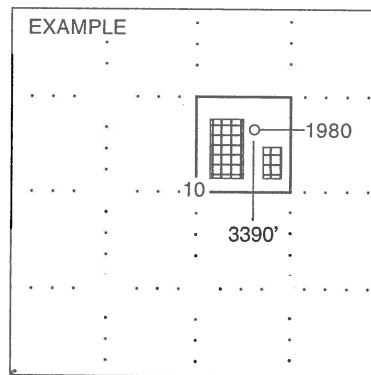
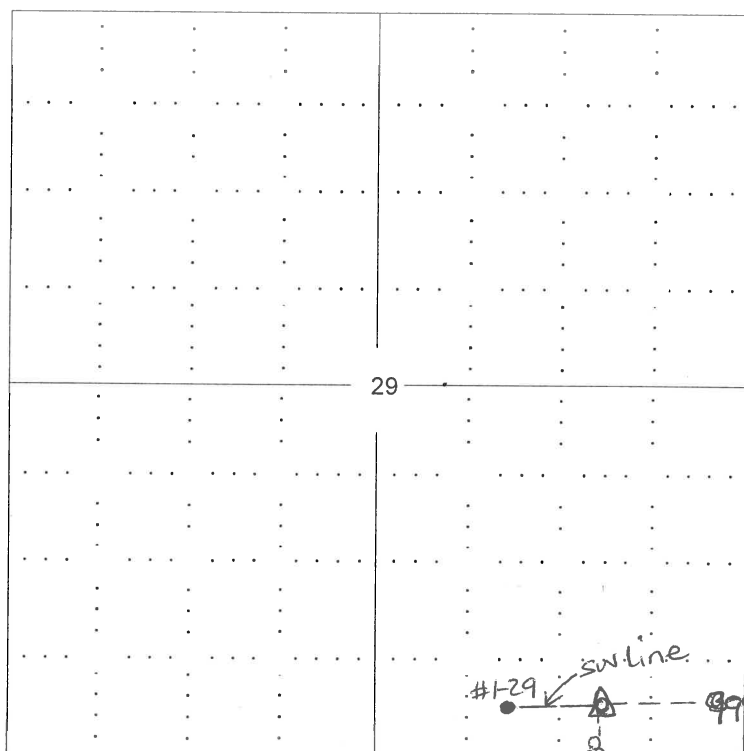


API No. 15 - 145-20411  
 Operator: F.G. Holl Company, L.L.C.  
 Lease: JOST  
 Well Number: 2-29  
 Field: Unnamed  
 Number of Acres attributable to well: 10  
 QTR / QTR / QTR of acreage: SW - SE - SE

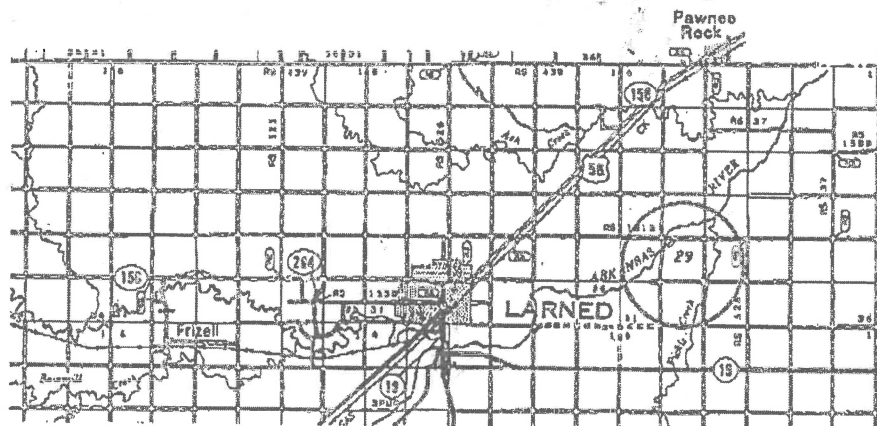
Location of Well: County: Pawnee  
 330 feet from  N /  S Line of Section  
 990 feet from  E /  W Line of Section  
 Sec. 29 Twp. 21 S. R. 15  East  West  
 Is Section:  Regular or  Irregular  
 If Section is Irregular, locate well from nearest corner boundary.  
 Section corner used:  NE  NW  SE  SW

**PLAT**

(Show location of the well and shade attributable acreage for prorated or spaced wells.)  
 (Show footage to the nearest lease or unit boundary line.)



SEWARD CO.



Controlling data is based upon the best map and photographs available to us and upon a regular section of land containing 640 acres.  
 Approximate section lines were determined using the normal standard of care of oilfield surveyors practicing in the state of Kansas. The section corners, which establish the precise section lines, were not necessarily located, and the exact location of the artificial locations in the section is not guaranteed. Therefore, the operator, by using this service and accepting this plat and all other parties relying thereon agree to hold Central Kansas Oilfield Services, Inc., its officers and employees harmless from all (except) costs and expenses and hold entities released from any liability from incidental or consequential damages.  
 Elevations derived from National Geodetic Vertical Datum.

Date August 2, 2013