



**Woolsey Operating Company, LLC**

Scale 1:240 (5"=100') Imperial

Measured Depth Log

**Well Name:** Mikita #1  
**Location:** Section 17 - Township 35 South - Range 12 West  
**License Number:** 15-007-24124-0000 **Region:** Barber County, Kansas  
**Spud Date:** January 18, 2014 **Drilling Completed:** January 29, 2014  
**Surface Coordinates:** 600' FNL & 2,300' FWL  
Irregular Section  
**Bottom Hole Coordinates:**  
**Ground Elevation (ft):** 1408' **K.B. Elevation (ft):** 1421'  
**Logged Interval (ft):** 4000' **To:** 5535' **Total Depth (ft):** 5535'  
**Formation:** Kansas City Group ---> Simpson Group  
**Type of Drilling Fluid:** Chemical Mud, Displaced at 3320'  
Printed by WellSight Log Viewer from WellSight Systems 1-800-447-1534 [www.WellSight.com](http://www.WellSight.com)

**OPERATOR**

**Company:** Woolsey Operating Company, LLC  
**Address:** 125 N. Market, Suite 1000  
Wichita, KS 67202

**GEOLOGIST**

**Name:** Bill Klaver  
**Company:** Woolsey Operating Co. LLC  
**Address:** 125 N. Market, Wichita Kansas, 67202

## COMMENTS

Surface Casing: Spudded test at 5:30 pm on January 18, 2014, set 5 joints of new 13 3/8" X 48#/ft casing to 223' KB (tally 211.05') with 300 sx Class A, 2% gel, 3% cc (by Allied). Plug down at 2:15 am on January 19, 2014. Cement did circulate.

Production Casing: 5 1/2" X 16.5#/ft

Deviation Surveys: 1 @ 226', 1/2 @ 1523', 1 @ 1998', 3/4 @ 2506', 3/4 @ 3009', 3/4 @ 3516', 3/4 @ 3992', 3/4 @ 4499', 1 @ 4896', 1/2 @ 5535'

Pipe Strap @ 4896', Strap: 4913.57', Board: 4914.05'. Strap .48' short. No corrections were made to the board.

Fossil Drilling Rig 3 Bit Record:

- 1) 17 1/2" HTC RT RR in at 0' out at 226', 2.75 hours
- 2) 7 7/8" Varel HE-21 in at 226' out at 4896', 4670' in 115 3/4 hrs
- 3) 7 7/8" Hughes SE-95 RR in at 4896', 50 1/2 hours

Gas Detector: Woolsey Operating Company, Gas Trailer #2

Mud System: Mud Co. Brad Bortz, Engineer

DSTs: Trilobite Testing, Gary Pevoteaux, Master Tester

E-Logs: Nabors Completion and Production Services, Dual Induction Laterolog w/SP, CNL-FDC w/PE, Gamma Ray and Caliper. Jeff Luebbers, Open Hole Engineer.

## DSTs

DST #1 Cherokee/Mississippian, 4760'-4896', SB BOB 2 minutes into initial flow period. GTS 13 minutes into second flow period. Flow rates of FFP: 20" 30.4 MCF, 30" 25.9 MCF, 40" 25.9 MCF, 50" 25.2 MCF, 60" 24.5 MCF. Rec:180' GCM w/oil specks (10% Gas, 90% Mud), 60' GOCM (4% Gas, 1% Oil, 95% Mud) IHP 2389, IFP 69-79, ISIP 1234, FFP 66-95, FSIP 1331, FHP 2263. BHT 128 degrees. Note: A good show of oil was pumped from the hole after the test. Partially covered the working pits.

## CREWS

Jim Wenrich, Tool Pusher

Daniel Orrantea, Days

Ron Burns, Evening

Andy Maestas, Morning

Terry Christenson, Relief



Sec. 9-35S-R12W and Woolsey Operating Co's  
Weckworth #4, Sec. 9-T35S-R12W.

4060' 6 pm  
Thursday  
January 23, 2014  
10 degrees!

One minute drill time was recorded from 4000' to rotary total depth. Ten foot rotary samples and circulating samples were collected from 4600' to rotary total depth. All samples were delivered to the survey at the completion of the test.

7 am Progress:  
January 18, 2014 MIRT/SPUD  
January 19, 2014 WOC  
January 20, 2014 Drilling at 1365'  
January 21, 2014 Drilling at 2200'  
January 22, 2014 Drilling at 3001'  
January 23, 2014 Drilling at 3720'  
January 24, 2014 Drilling at 4425'  
January 25, 2014 Drilling at 4780'  
January 26, 2014 DST #1 at 4896'  
January 27, 2014 Lost Circ at 5140'  
January 28, 2014 Drilling at 5365'  
January 29, 2014 TOOH for log at 5535'

Oil and Gas Show Legend

- ⊗ Gas
- Even Stain/Saturation
- ◐ Spotted Stain/Saturation
- Questionable
- ◻ Dead/Gilsonitic

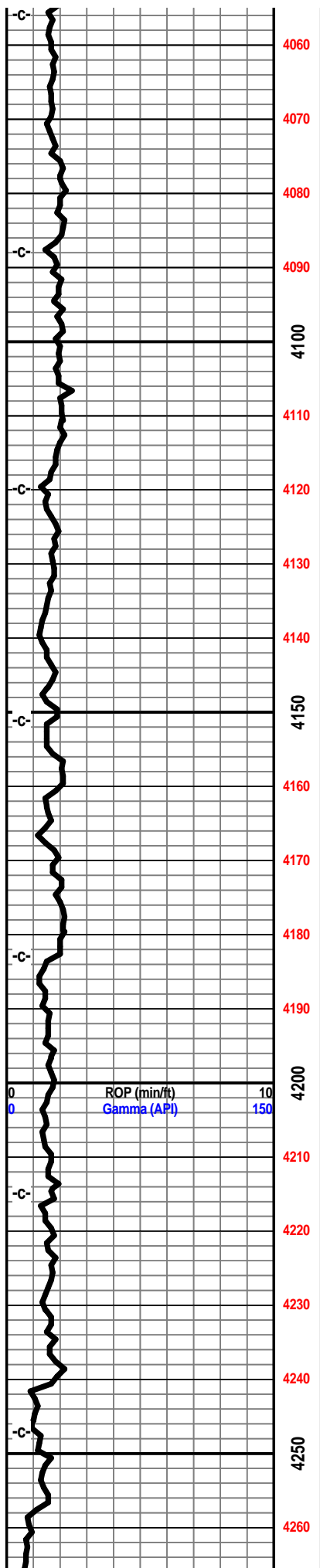
E-log Tops:  
Herington 1961 (-540)  
Onaga 2830 (-1409)  
Wabaunsee 2889 (-1468)  
LeCompton 3641 (-2220)  
Kanwaka 3665 (-2244)  
Elgin Sand 3737 (-2316)  
Heebner 3875 (-2454)  
Toronto 3894 (-2473)  
Douglas Grp 3937 (-2516)  
Douglas Shale 3963 (-2542)  
Haskell DND  
Stalnaker 4242 (-2821)  
Quindaro Shale 4395 (-2974)  
Kansas City 'F' 4411 (-2990)  
Kansas City 'G' (Iola) 4436 (-3015)  
Kansas City 'H' (Drum) 4489 (-3068)  
Kansas City 'I' (Dennis) 4524 (-3103)  
Stark 4563 (-3142)  
Kansas City 'J' (Swope) 4573 (-3152)  
Hushpuckney 4591 (-3170)  
Kansas City 'K' (Hertha) 4607 (-3186)

wt. 8.9 vis. 54

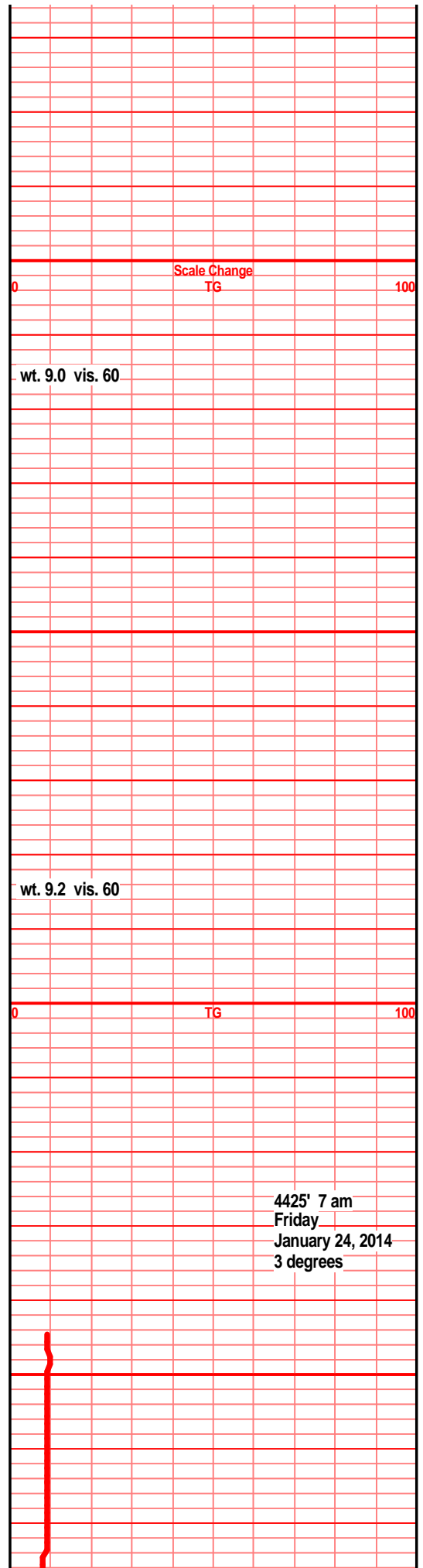
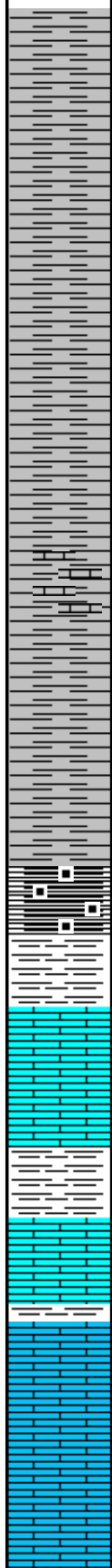
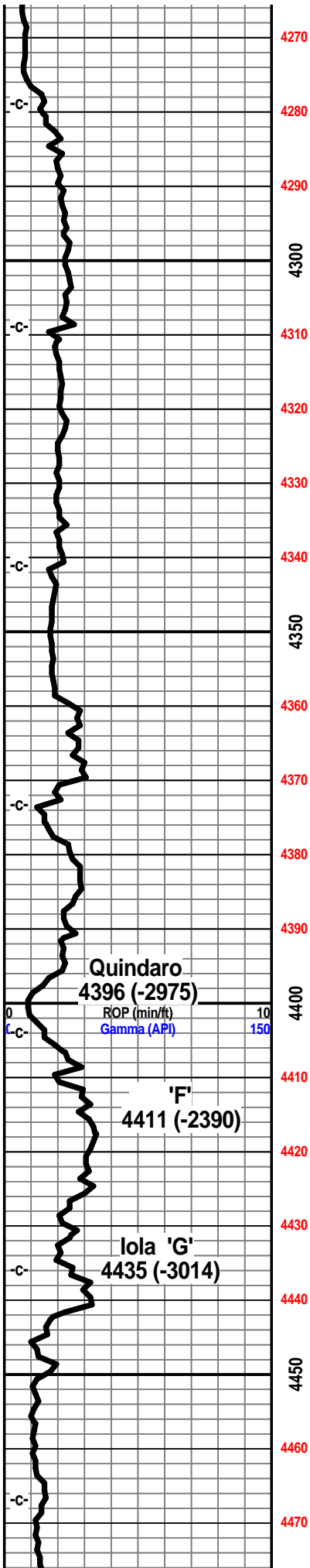
wt. 9.1 vis. 56

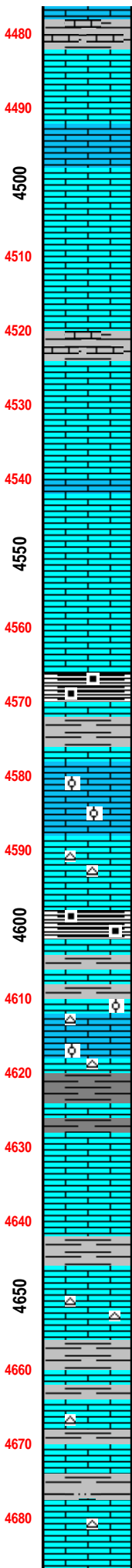
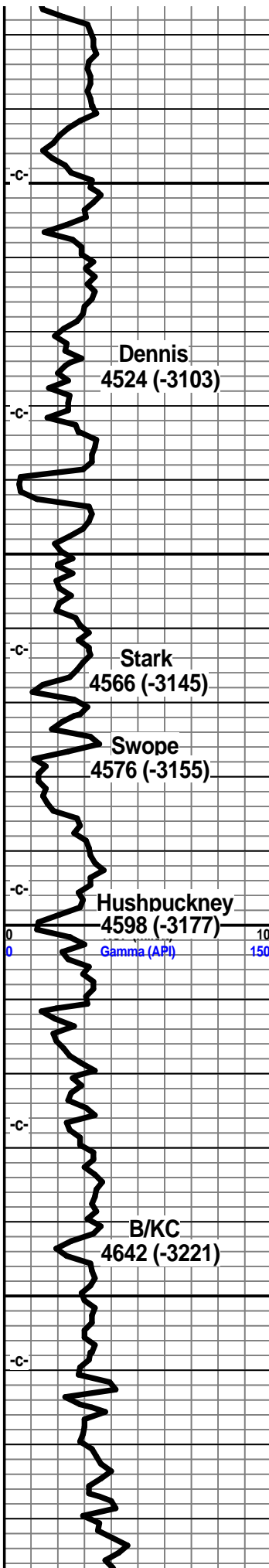
0 TG 300

wt. 9.0 vis. 58



B/Kansas City 4637 (-3216)  
 Pawnee 4736 (-3315)  
 Cherokee Grp 4781 (-3360)  
 Cherokee Sand 4805 (-3384)  
 Mississippi Unc. 4850 (-3429)  
 C3 4850 (-3429)  
 C2A 4857 (-3436)  
 C2 4889 (-3468)  
 C1 4974 4974 (-3553)  
 Osage 5039 (-3618)  
 Northview Shale 5108 (-3687)  
 Compton 5127 (-3706)  
 Kinderhook 5146 (-3725)  
 Woodford5217 (-3706)  
 Misener Sand 5243 (-3822)  
 Viola 5301 (-3880)  
 Simpson Group 5399 (-3978)  
 Simpson 'F' DND  
 Simpson 'Wilcox' Sand 5419 (-3998)  
 McLish Shale 5480 (-4059)  
 LTD 5522 (-4101)





shl gry calc, tr blk wxy grsy carb chunks, 1st tan lt gry tan f xln gran sub chlky, foss frags calc xln fill

1st buff lt gry tan f sli med xln blk ang gran sub chlky, foss frag, calc xln fill, foss ool, pelletal, tr chrt lt gry wht shrp frsh opa

shl drk gry blk, blk grsy wxy carb, gas bubs, blk ang pcs

1st crm tan lt gry in prt, f sli med xln, gran sub chlky, foss frags, tr arg, foss ool, calc xln fill, tr chrt wht lt gry shrp frsh opa

shl gry med gry silty gritty, calc, 1st dull tan lt gry f xln blk and dns, sub chlky, foss frags, calc xln fill

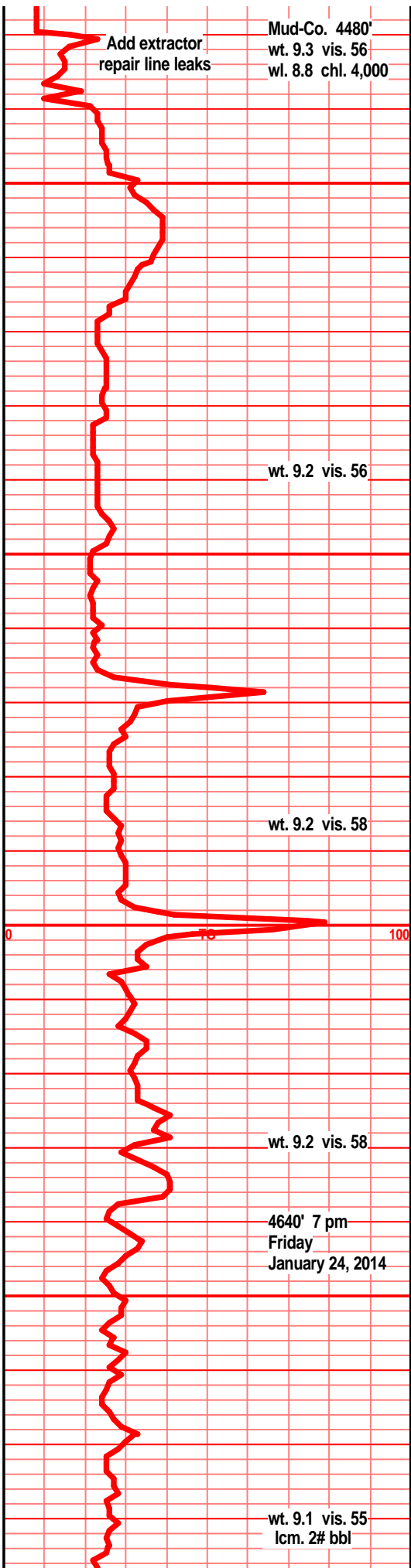
1st buff gry tan f vf xln blk dns hrd, sub chlky, foss frags, arg silty gritty in prt, calc xln fill,

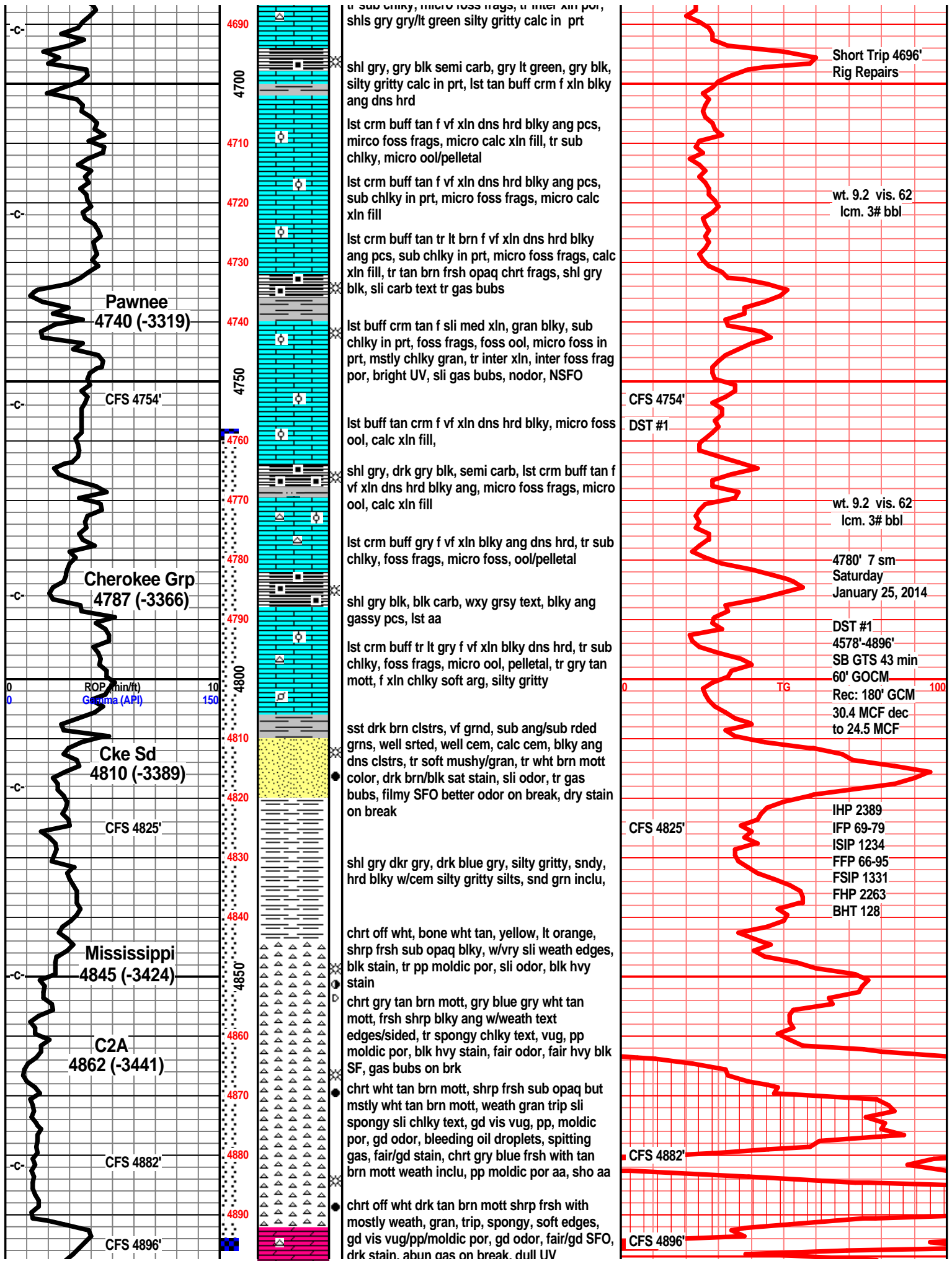
shl gry blk, gry brn, silty gritty calc, 1st dull gry tan lt brn f xln dns hrd ang arg, sub chlky

shl drk gry, gry drk green tr rd, silty gritty calc in prt, 1st buff tan gry f xln dns hrd blk ang tr chlky tr foss frags, chrt tan brn shrp frsh opa

shl gry lt green, silty gritty, tr sndy text, 1st buff tan tr brn f vf xln dns hrd blk ang tr arg, silty, chrt tan brn shrp frsh opa

1st buff tan drk gry/crm f xln blk ang hrd dns, tr sub chlky, micro foss frags, tr inter xln por





tr sub chky, micro foss frags, tr inter xln por, shls gry gry/lt green silty gritty calc in prt

shl gry, gry blk semi carb, gry lt green, gry blk, silty gritty calc in prt, 1st tan buff crm f xln blkly ang dns hrd

1st crm buff tan f vf xln dns hrd blkly ang pcs, micro foss frags, micro calc xln fill, tr sub chlky, micro ool/pelletal

1st crm buff tan f vf xln dns hrd blkly ang pcs, sub chlky in prt, micro foss frags, micro calc xln fill

1st crm buff tan tr lt brn f vf xln dns hrd blkly ang pcs, sub chlky in prt, micro foss frags, calc xln fill, tr tan brn frsh opa q chrt frags, shl gry blk, sli carb text tr gas bubs

1st buff crm tan f sli med xln, gran blkly, sub chlky in prt, foss frags, foss ool, micro foss in prt, mstly chlky gran, tr inter xln, inter foss frag por, bright UV, sli gas bubs, nodor, NSFO

1st buff tan crm f vf xln dns hrd blkly, micro foss ool, calc xln fill,

shl gry, drk gry blk, semi carb, 1st crm buff tan f vf xln dns hrd blkly ang, micro foss frags, micro ool, calc xln fill

1st crm buff gry f vf xln blkly ang dns hrd, tr sub chlky, foss frags, micro foss, ool/pelletal

shl gry blk, blk carb, wxy grsy text, blkly ang gassy pcs, 1st aa

1st crm buff tr lt gry f vf xln blkly dns hrd, tr sub chlky, foss frags, micro ool, pelletal, tr gry tan mott, f xln chlky soft arg, silty gritty

sst drk brn clstrs, vf grnd, sub ang/sub rded grns, well srted, well cem, calc cem, blkly ang dns clstrs, tr soft mushy/gran, tr wht brn mott color, drk brn/blk sat stain, sli odor, tr gas bubs, filmy SFO better odor on break, dry stain on break

shl gry dkr gry, drk blue gry, silty gritty, sndy, hrd blkly w/cem silty gritty silts, snd grn inclu,

chrt off wht, bone wht tan, yellow, lt orange, shrp frsh sub opa q blkly, w/vry sli weath edges, blk stain, tr pp moldic por, sli odor, blk hvy stain

chrt gry tan brn mott, gry blue gry wht tan mott, frsh shrp blkly ang w/weath text edges/sided, tr spongy chlky text, vug, pp moldic por, blk hvy stain, fair odor, fair hvy blk SF, gas bubs on brk

chrt wht tan brn mott, shrp frsh sub opa q but mstly wht tan brn mott, weath gran trip sli spongy sli chlky text, gd vis vug, pp, moldic por, gd odor, bleeding oil droplets, spitting gas, fair/gd stain, chrt gry blue frsh with tan brn mott weath inclu, pp moldic por aa, sho aa

chrt off wht drk tan brn mott shrp frsh with mostly weath, gran, trip, spongy, soft edges, gd vis vug/pp/moldic por, gd odor, fair/gd SFO, drk stain. abun gas on break. dull UV

Short Trip 4696'  
Rig Repairs

wt. 9.2 vis. 62  
lcm. 3# bbl

CFS 4754'  
DST #1

wt. 9.2 vis. 62  
lcm. 3# bbl

4780' 7 sm  
Saturday  
January 25, 2014

DST #1  
4578'-4896'  
SB GTS 43 min  
60' GOCM  
Rec: 180' GCM  
30.4 MCF dec  
to 24.5 MCF

CFS 4825'

IHP 2389  
IFP 69-79  
ISIP 1234  
FFP 66-95  
FSIP 1331  
FHP 2263  
BHT 128

CFS 4882'

CFS 4896'

Pawnee  
4740 (-3319)

CFS 4754'

Cherokee Grp  
4787 (-3366)

Cke Sd  
4810 (-3389)

CFS 4825'

Mississippi  
4845 (-3424)

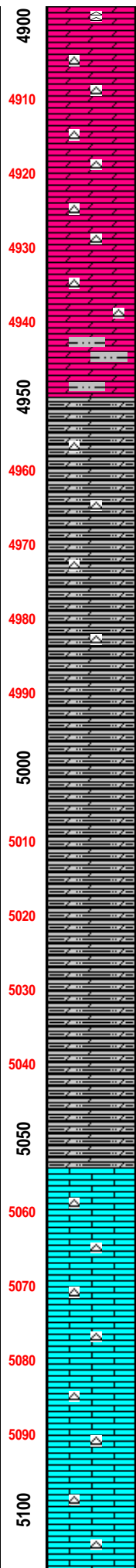
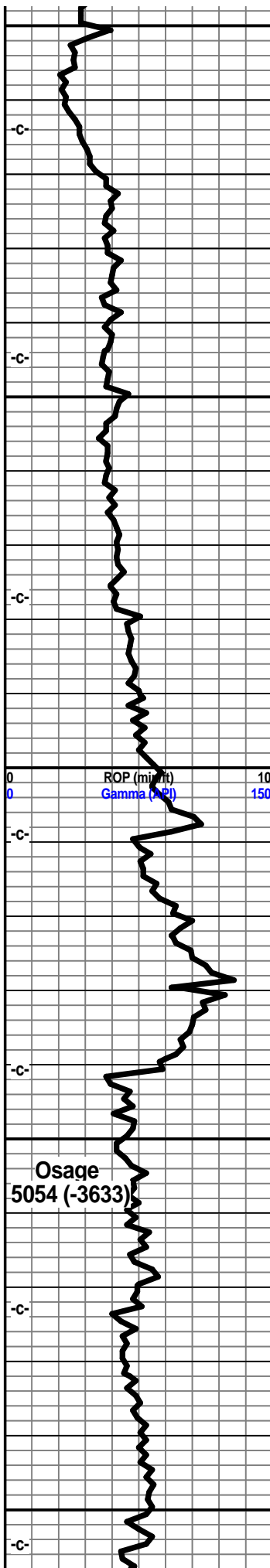
C2A  
4862 (-3441)

CFS 4882'

CFS 4896'

ROP (min/ft)  
Gamma (API)

TG



4900 dolo crm tan tr lt gry/green, f vf xln, gran, sndy gritty text, snd grn inclu, tr sli inter xln por, mstly tite dns, fair to gd stain sat, SSFO/brkn, tr gas bubs, chrt, chrty dolo, crm tan with blue gry shrp frsh chrt inclu, tr weath chrt with pp moldic vug por, stain, SSFO, sli to fair odor in all

4910

4920

4930 dolo crm tan, lt gry/brn f vf xln dns hrd blk ang, silic, sndy text, snd grn inclu, tr inter xln por, off wht lt gry chrt inclu, brn blk stain along chrt/dolo contact, tr weath chrt, pp moldic por

4940

4950 dolo tan bec gry, drker gry f micro xln, dns hrd, silic text, tr sndy/snd grn inclu, chrt wht bone wht gry shrp frsh sub opaq

4960

4970 dolo gry drk gry, f micro xln dns hrd blk ang bec arg, silty, silic text, chrt off wht bone wht lt gry shrp frsh sub opaq

4980

4990 dolo silty dolo, med, drk gry, f vf xln gran gritty silty, dolo drk tan grn f micro xln silic text, tr sndy text, snd grn inclu, tr chrt wht, bone wht shrp frsh

5000

5010 dolo drk tan gry, f micro xln, arg silty silic text, tr sndy text, drk gry silty dolostn, f vf xln gran gritty

5020

5030 dolo silty dolo, med to drk gry, f vry fn xln dns hrd silty gritty, arg, silic text, tr chrt wht off wht shrp frsh sub opaq

5040

5050 dolo, silty shly dolostn, f vf xln gran gritty shly silic text, arg

5060

5070 dolo, silty shly dolostn, f vf xln dns hrd blk ang arg, silty gritty silic text

5080

5090 dolo silty dolo, med drk gry, f vf xln gran gritty, silty, silic text

5100 dolo, silty gritty shly dolostn, drk med drk gry, f vf xln, silic text, arg

dolo, silty dolo, med/drk gry, f vf xln dns hrd blk gritty, silic, shly

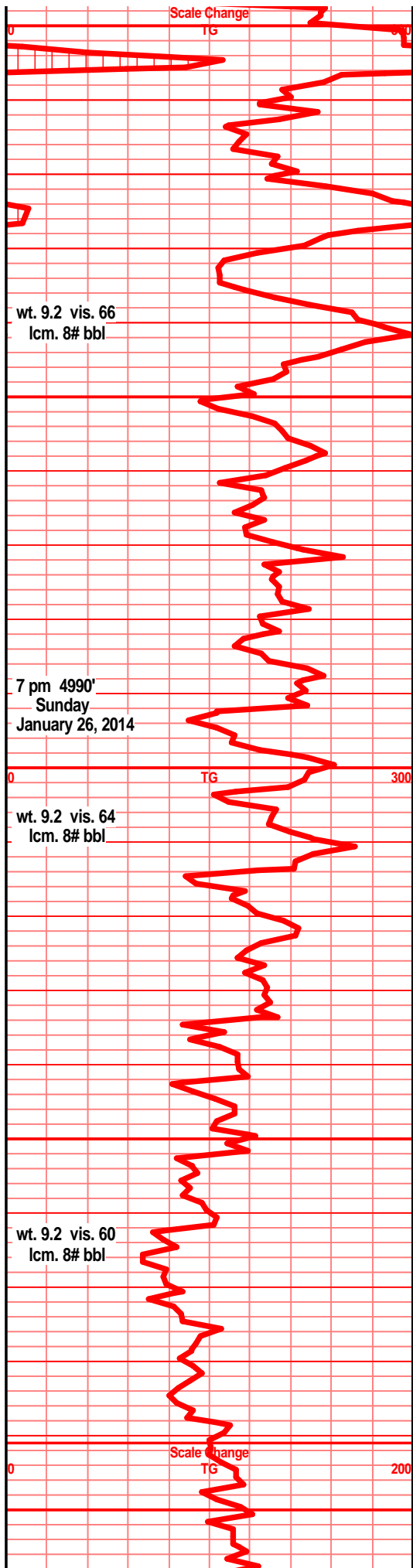
dolo f vf xln, drk gry, silty, silic text, dns shly

lst wht off wht, f sli med xln, blk ang dns tr sub chlky, chrt wht off wht sub opaq, shrp frsh

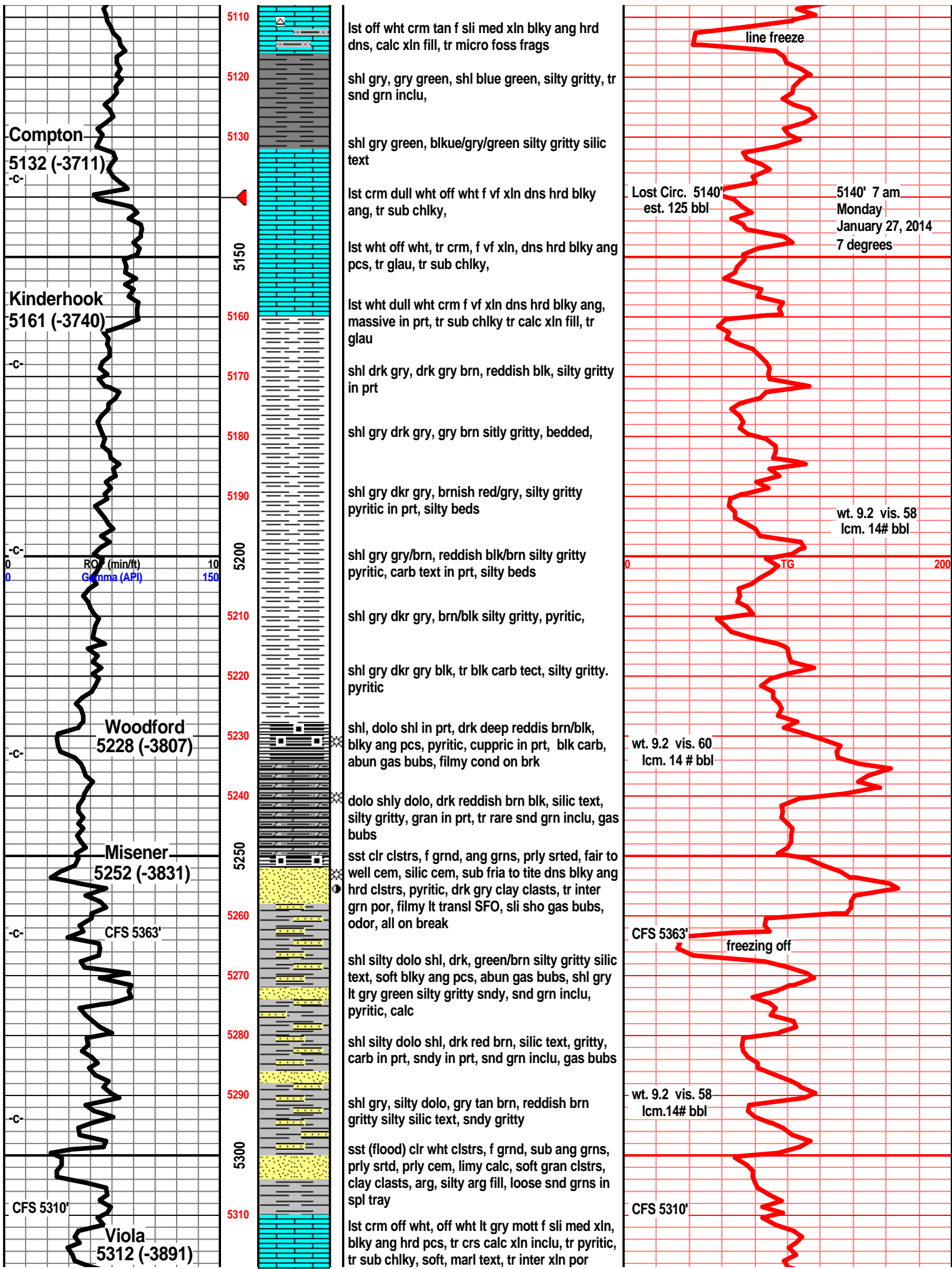
lst crm tan f sli med xln, blk ang dns hrd, tr sub chlky, tr crs calc xstls, chrt wht opaq shrp frsh

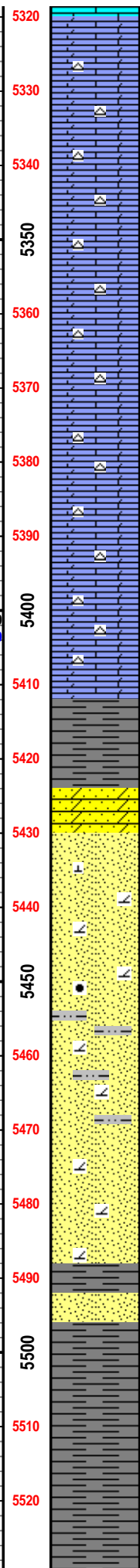
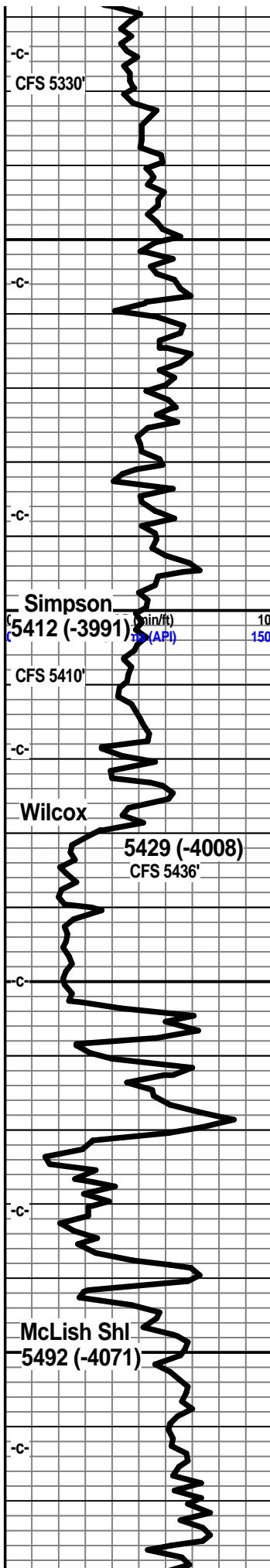
lst wht crm tan f sli med xln, blk ang dns hrd, tr sub chlky, calc xln fill chrt aa

lst wht off wht crm f sli med xln, blk dns ang, tr sub chlky, calc xln fill/xstls, chrt wht shrp frsh opaq









lst off wht gry mott f sli med xln, blkly ang tr sub chlky, inter xln por, tr crs calc xln inclu, tr foss frags. pyritic, dolo gry tan f xln dns hrd gran gritty to soft chlky

lst crm tan, dolo in prt, tr gry tan mott, f sli med xln blkly ang sub chlky, foss frags, tr crs calc xstls inclu, chrty, chrt wht off wht shrp frsh opa, pyritic in ptr

lst/dolo, crm tan lt brn, f xln blkly ang gran pcs, tr sub chlky, tr foss frags, chrty, chrt dull tan brn shrp frsh sub opa

lst dolo drk tan dull tan brn f vf xln blkly ang dns hrd, chrty, tr sub chlky/gran text, chrt dull tan brn shrp frsh sub opa

lst/dolo drk tan brn, f vf xln dns hrd blkly ang, tr sub chlky/gran text, tr foss frags, chrty, chrt dull tan brn shrp frsh sub opa

lst/dolo drk tan crm, lt brn f vf xln, dns, sub chlky gran, silic in prt, chrty in prt, much dull tan brn shrp sub opa chrt

lst/dolo drk crm dull tan brn f vf xln gran tr sub chlky, silic, chrty, tr sndy text, chrt dull tan brn shrp frsh sub opa

lst, dolo drk tan brn, tr drk brn f vf xln gran blkly dns silic, tr chlky soft gran, sndy text, tr inter xln por, tr brn stain, filmy SFO, nodor, dull UV (2-3 pcs), 60" spl-shl, drk gry green blue teal green, slick grsy wxy test.

sst drk gry green f grnd, sub ang grnd, prly srtd pyritic, well cem, silic cem dns blkly ang clstrs

sst off wth tan f grnd, sub ang/ang grns, w/srtd, prly cem, inter grain por, fria soft, tr arg clay fill, sli odor, lt transl SFO, brn oil smears, tr gas bubs

sst off wht wht lt tan clstrs f grnd, sub ang/sub rded, w/srtd, msly w/cem, calc and silic cem, sub fria, tr pyritic, clay clasts, tr arg,

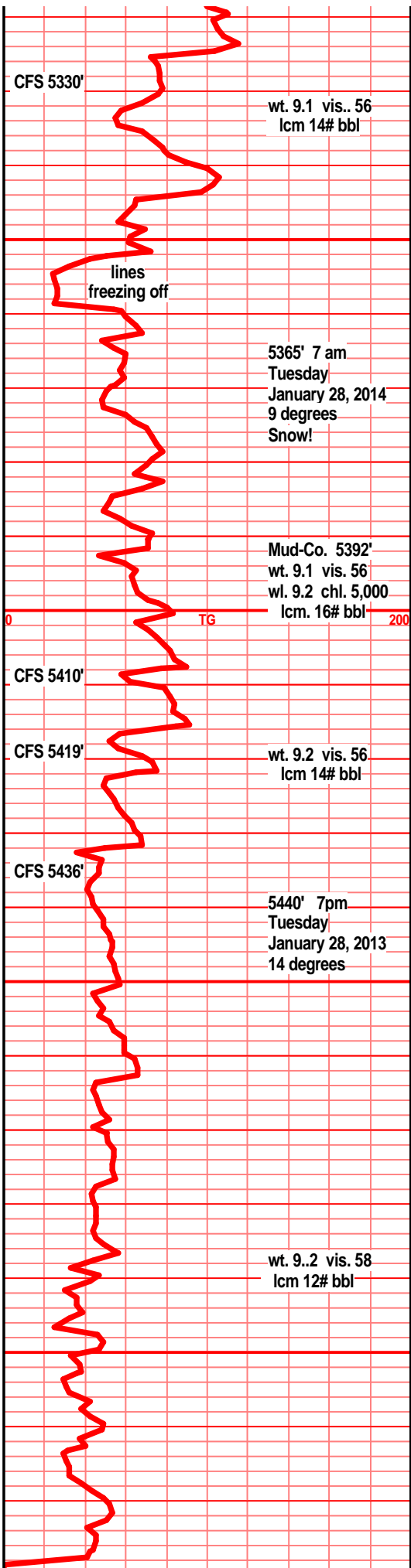
shl gry green teal green w/snd grn inclu, sst wht off wht lt tan f tr vf grnd, sub ang to sub rded grns, fair to prly strd, well cem, silic cem, sub fria, tr pyritic, clay clasts, tr clay fill, tr arg/prt

sst off wht lt gry clstrs, f grnd, sub ang/sub rded grns, fair to w/srtd, v/well cem, silic cem, non-fria, blkly ang dns hrd clstrs, pyritic, clay clasts, arg in prt

shl gry teal green wxy grsy test, sst dull tan lt gry clstrs, f grnd, sub ang/sub rded grns, fair to well srtd, v/well cem, silic cem, dolo text, sub fria, blkly ang dns hrd clstrs, tr clay clasts, drk min specks, tr silts, arg in some

shl gry, dkr gry-green, teal green, fnly silty, snd grn inclu, pyritic bands

shl gry, drk gry-green blue/green teal green wxy grsy text, snd grn inclu, pyritic bands,



wt. 9.1 vis.. 56 lcm 14# bbl

lines freezing off

5365' 7 am Tuesday January 28, 2014 9 degrees Snow!

Mud-Co. 5392' wt. 9.1 vis. 56 wt. 9.2 chl. 5,000 lcm. 16# bbl

wt. 9.2 vis. 56 lcm 14# bbl

5440' 7pm Tuesday January 28, 2013 14 degrees

wt. 9..2 vis. 58 lcm 12# bbl

