



**TRILOBITE TESTING, INC**

# DRILL STEM TEST REPORT

IA Operating Inc.  
 9915 W 21st ST.  
 STE B  
 Wichita KS 67205  
 ATTN: Jeff Lawler

**34 - 2S - 24W Norton KS**

**Marvin Wudtke #34-1**

Job Ticket: 56867      **DST#: 2**  
 Test Start: 2014.03.26 @ 13:44:00

## GENERAL INFORMATION:

Formation: **LKC "J - K"**  
 Deviated: No Whipstock: ft (KB)  
 Time Tool Opened: 15:41:50  
 Time Test Ended: 20:23:00  
 Interval: **3580.00 ft (KB) To 3644.00 ft (KB) (TVD)**  
 Total Depth: 3644.00 ft (KB) (TVD)  
 Hole Diameter: 7.88 inches Hole Condition: Good  
 Test Type: Conventional Bottom Hole (Reset)  
 Tester: Ryan Nichols  
 Unit No: 58  
 Reference Elevations: 2466.00 ft (KB)  
 2458.00 ft (CF)  
 KB to GR/CF: 8.00 ft

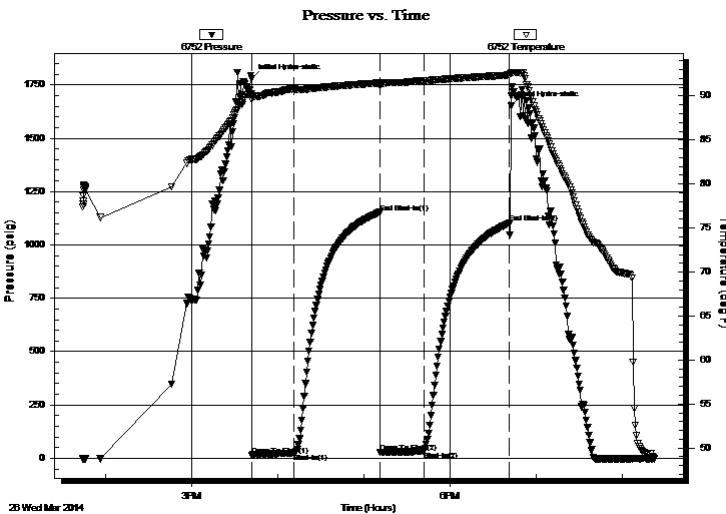
## Serial #: 6752

Inside

Press@RunDepth: 34.67 psig @ 3581.00 ft (KB)      Capacity: 8000.00 psig  
 Start Date: 2014.03.26      End Date: 2014.03.26      Last Calib.: 2014.03.26  
 Start Time: 13:44:01      End Time: 20:23:00      Time On Btm: 2014.03.26 @ 15:41:40  
 Time Off Btm: 2014.03.26 @ 18:42:20

TEST COMMENT: 30 IF - Surface blow built to 1"  
 60 ISI - No return  
 30 FF - Surface blow started @ 4 mins died @ 5 mins  
 60 FSI - No return

## PRESSURE SUMMARY



Time (Min.)	Pressure (psig)	Temp (deg F)	Annotation
0	1779.94	90.29	Initial Hydro-static
1	14.61	89.59	Open To Flow (1)
30	23.94	90.80	Shut-In(1)
90	1152.60	91.49	End Shut-In(1)
90	26.80	91.21	Open To Flow (2)
120	34.67	91.73	Shut-In(2)
180	1101.46	92.37	End Shut-In(2)
181	1651.12	92.55	Final Hydro-static

## Recovery

Length (ft)	Description	Volume (bbl)
35.00	Mud - 100%M	0.21

\* Recovery from multiple tests

## Gas Rates

Choke (inches)	Pressure (psig)	Gas Rate (Mcf/d)



**TRILOBITE  
TESTING, INC**

# DRILL STEM TEST REPORT

**FLUID SUMMARY**

IA Operating Inc.  
9915 W 21st ST.  
STE B  
Wichita KS 67205  
ATTN: Jeff Lawler

**34 - 2S - 24W Norton KS**  
**Marvin Wudtke #34-1**  
Job Ticket: 56867      **DST#: 2**  
Test Start: 2014.03.26 @ 13:44:00

## Mud and Cushion Information

Mud Type: Gel Chem	Cushion Type:	Oil API:	deg API
Mud Weight: 9.00 lb/gal	Cushion Length: ft	Water Salinity:	ppm
Viscosity: 70.00 sec/qt	Cushion Volume: bbl		
Water Loss: 7.60 in <sup>3</sup>	Gas Cushion Type:		
Resistivity: ohm.m	Gas Cushion Pressure: psig		
Salinity: 1750.00 ppm			
Filter Cake: 1.00 inches			

## Recovery Information

Recovery Table

Length ft	Description	Volume bbl
35.00	Mud - 100%M	0.209

Total Length: 35.00 ft      Total Volume: 0.209 bbl  
 Num Fluid Samples: 0      Num Gas Bombs: 0      Serial #:  
 Laboratory Name:      Laboratory Location:  
 Recovery Comments:

