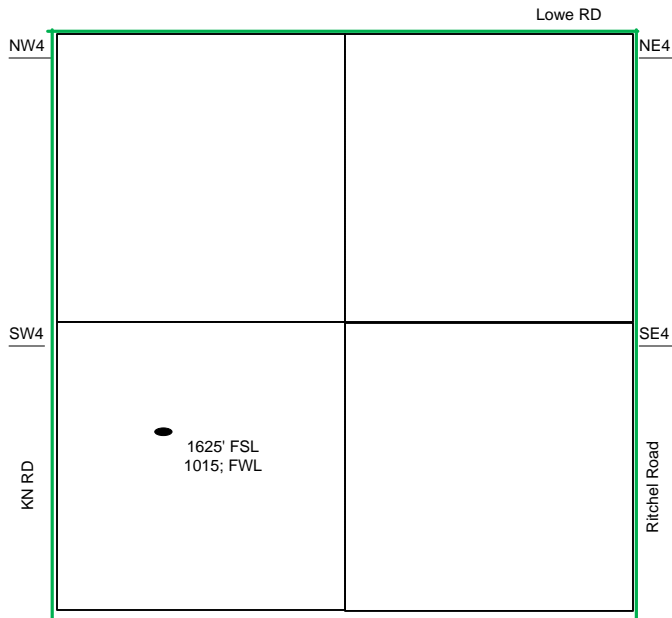
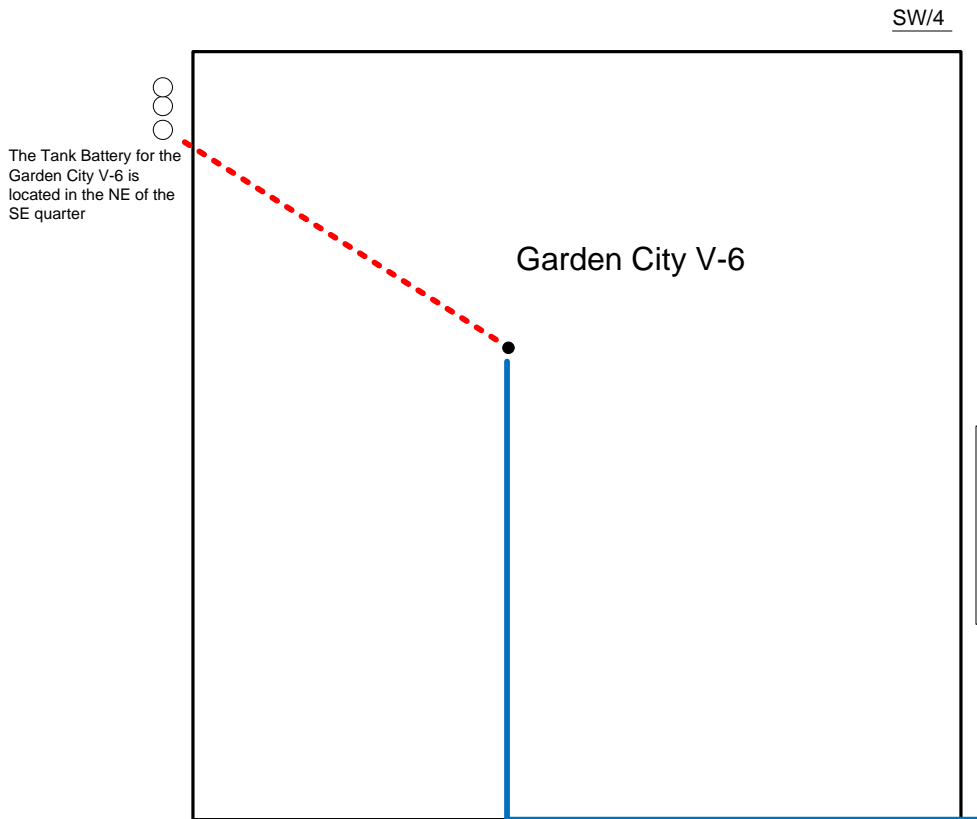


Proposed Plan of Construction

Garden City V-6  
Sec 27 T23S-R34W  
Finney County, KS



Sec 27 - T23S - R34W



Proposed Details of  
SW/4 Sec 27 - T23S - R34W

Note-Drawing **Not** to Scale

Proposed Site Diagram  
Garden City V-6  
May 20, 2014