



Joshua R. Austin

Petroleum Geologist

report for



Lebsack Oil Production, Inc.

COMPANY: Lebsack Oil Production, Inc.

LEASE: Garden City #5-12

FIELD: Tanker

LOCATION: 1320' FNL & 1320' FEL

SEC: 12 TWSP: 22s RGE: 34w

COUNTY: Finney STATE: Kansas

KB: 2917 GL: 2906

API # 15-055-22276-00-00

CONTRACTOR: H2 Drilling LLC (rig #2)

Spud: 02/24/2014 Comp: 02/27/2014

RTD: 4860' LTD: 4860

Mud Up: 3400' Type Mud: Chemical was displaced

Samples Saved From: 3600' to RTD.

Drilling Time Kept From: 3600' to RTD.

Samples Examined From: 3600' to RTD.

Geological Supervision From: 3980' to RTD.

Geologist on Well: Josh Austin

Surface Casing: 8 5/8" @ 462'

Production Casing: 5 1/2" @

Electronic Surveys: By Pioneer Energy Services

NOTES

On the basis of the positive structural position and the drill stem test, it was recommended to run 5 1/2" production casing to further test the Mississippi, Morrow and Lansing zones.

Lebsack Oil Production, Inc.

well comparison sheet

DRILLING WELL

COMPARISON WELL

COMPARISON WELL

| 2917 KB | | | | | Structural Relationship | | | | 2920 KB | | | | Structural Relationship | |
|--------------|--------|---------|------|---------|-------------------------|---------|--------|-----|---------|---------|--------|-----|-------------------------|-----|
| Formation | Sample | Sub-Sea | Log | Sub-Sea | Log | Sub-Sea | Sample | Log | Log | Sub-Sea | Sample | Log | Sample | Log |
| Heebner | 3790 | -873 | 3794 | -877 | 3794 | -873 | 0 | -4 | 3796 | -879 | 6 | 2 | | |
| Toronto | 3810 | -893 | 3810 | -893 | 3809 | -888 | -5 | -5 | 3812 | -895 | 2 | 2 | | |
| Lansing | 3884 | -967 | 3888 | -971 | 3887 | -966 | -1 | -5 | 3892 | -975 | 8 | 4 | | |
| Base KC | 4304 | -1387 | 4308 | -1391 | 4312 | -1391 | 4 | 0 | 4315 | -1398 | 11 | 7 | | |
| Marmaton | 4334 | -1417 | 4335 | -1418 | 4340 | -1419 | 2 | 1 | 4348 | -1431 | 14 | 13 | | |
| Pawnee | 4409 | -1492 | 4416 | -1499 | 4417 | -1496 | 4 | -3 | 4426 | -1509 | 17 | 10 | | |
| Ft. Scott | 4438 | -1521 | 4441 | -1524 | 4453 | -1532 | 11 | 8 | 4456 | -1539 | 18 | 15 | | |
| Cherokee Sh. | 4450 | -1533 | 4453 | -1536 | 4460 | -1539 | 6 | 3 | 4466 | -1549 | 16 | 13 | | |
| Morrow Shale | 4617 | -1700 | 4634 | -1717 | 4638 | -1717 | 17 | 0 | 4646 | -1729 | 29 | 12 | | |
| Mississippi | 4678 | -1761 | 4694 | -1777 | 4690 | -1769 | 8 | -8 | 4717 | -1800 | 39 | 23 | | |
| St. Louis C | 4786 | -1869 | 4786 | -1869 | 4777 | -1856 | -13 | -13 | 4775 | -1858 | -11 | -11 | | |
| RTD | 4860 | -1943 | | | 4860 | -1939 | | | 4860 | -1943 | | | | |
| LTD | 4866 | -1949 | | | 4860 | -1939 | | | 4860 | -1943 | | | | |



**TRILOBITE
TESTING, INC.**

DRILL STEM TEST REPORT

Lebsack Oil Production, Inc

12 22s 34w Finney, Ks

PO Box 345
Chase, Ks 67524

Garden City 5-12

Job Ticket: 56379

DST#: 1

ATTN: Josh Austin

Test Start: 2014.02.24 @ 17:42:00

GENERAL INFORMATION:

Formation: Pawnee

Deviated: No Whipstock: ft (KB)

Time Tool Opened: 21:52:30

Time Test Ended: 01:58:45

Test Type: Conventional Bottom Hole (Initial)

Tester: Bradley Walter

Unit No: 69

Interval: 4398.00 ft (KB) To 4426.00 ft (KB) (TVD)

Total Depth: 4426.00 ft (KB) (TVD)

Hole Diameter: 7.88 inches Hole Condition: Good

Reference Elevations: 2917.00 ft (KB)

2906.00 ft (CF)

KB to GR/CF: 11.00 ft

Serial #: 8522 Outside

Press@RunDepth: 49.48 psig @ 4399.00 ft (KB)

Start Date: 2014.02.24

End Date: 2014.02.25

Start Time: 17:42:05

End Time: 01:58:44

Capacity: 8000.00 psig

Last Calib.: 2014.02.25

Time On Btm: 2014.02.24 @ 21:52:15

Time Off Btm: 2014.02.25 @ 00:02:15

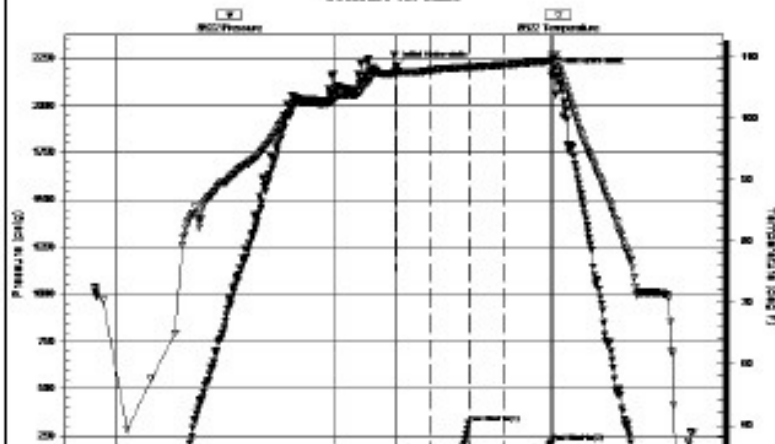
TEST COMMENT: IF: Blow died @ 8 min.

IS: No return.

FF: No blow.

FS: No return.

Pressure vs. Time



PRESSURE SUMMARY

| Time (Min.) | Pressure (psig) | Temp (deg F) | Annotation |
|-------------|-----------------|--------------|----------------------|
| 0 | 2208.13 | 108.25 | Initial Hydro-static |
| 1 | 38.95 | 107.60 | Open To Flow (1) |
| 29 | 46.42 | 107.78 | Shut-in(1) |
| 61 | 315.65 | 108.29 | End Shut-in(1) |
| 62 | 47.08 | 108.25 | Open To Flow (2) |
| 90 | 49.48 | 108.72 | Shut-in(2) |
| 130 | 217.30 | 109.26 | End Shut-in(2) |
| 130 | 2174.29 | 109.78 | Final Hydro-static |



Recovery

| Length (ft) | Description | Volume (bbl) |
|-------------|----------------------|--------------|
| 20.00 | mud 100m (oil spots) | 0.10 |
| | | |
| | | |
| | | |
| | | |
| | | |

Gas Rates

| Choke (Inches) | Pressure (psig) | Gas Rate (Mcf/d) |
|----------------|-----------------|------------------|
|----------------|-----------------|------------------|



TRILOBITE
TESTING, INC.

DRILL STEM TEST REPORT

Lebsack Oil Production, Inc

PO Box 345
Chase, Ks 67524

ATTN: Josh Austin

12 22s 34w Finney, Ks

Garden City 5-12

Job Ticket: 56380

DST#: 2

Test Start: 2014.02.26 @ 06:28:00

GENERAL INFORMATION:

Formation: **Morrow Sand**

Deviated: No Whipstock: ft (KB)

Time Tool Opened: 10:05:30

Time Test Ended: 15:17:45

Test Type: Conventional Bottom Hole (Reset)

Tester: Bradley Walter

Unit No: 69

Interval: 4610.00 ft (KB) To 4670.00 ft (KB) (TVD)

Total Depth: 4670.00 ft (KB) (TVD)

Hole Diameter: 7.88 inches Hole Condition: Good

Reference Elevations: 2917.00 ft (KB)

2906.00 ft (CF)

KB to GRVCF: 11.00 ft

Serial #: 8522 Outside

Press@RunDepth: 141.07 psig @ 4611.00 ft (KB)

Start Date: 2014.02.26

End Date:

2014.02.26

Start Time: 06:28:05

End Time:

15:17:45

Capacity: 8000.00 psig

Last Calib.: 2014.02.26

Time On Btm: 2014.02.26 @ 10:05:15

Time Off Btm: 2014.02.26 @ 12:09:30

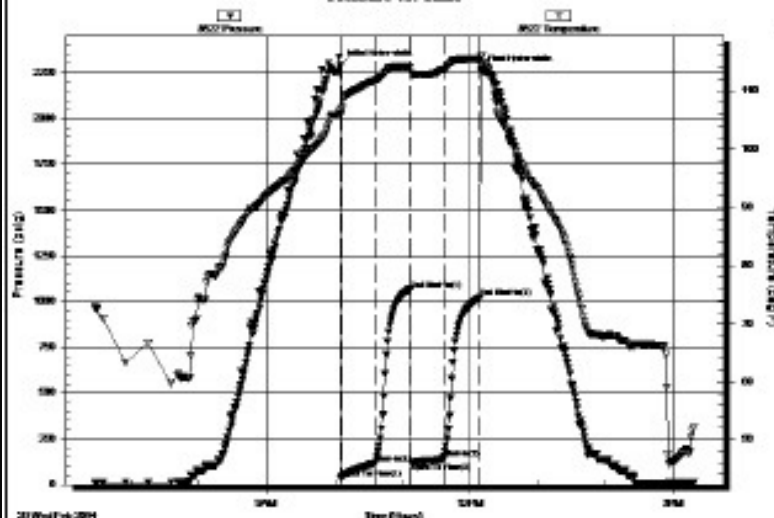
TEST COMMENT: IF: BOB @ 9 min.

IS: 1 1/2" return.

FF: BOB @ 4 min.

FSt: 1 1/2" return.

Pressure vs. Time



PRESSURE SUMMARY

| Time (Min.) | Pressure (psig) | Temp (deg F) | Annotation |
|-------------|-----------------|--------------|----------------------|
| 0 | 2290.14 | 106.73 | Initial Hydro-static |
| 1 | 32.57 | 105.92 | Open To Flow (1) |
| 31 | 115.48 | 111.70 | Shut-In(1) |
| 62 | 1064.11 | 114.00 | End Shut-In(1) |
| 63 | 119.67 | 113.00 | Open To Flow (2) |
| 91 | 141.07 | 113.61 | Shut-In(2) |
| 124 | 1022.63 | 115.37 | End Shut-In(2) |
| 125 | 2262.57 | 115.90 | Final Hydro-static |

Recovery







| Length (ft) | Description | Volume (bbl) |
|-------------|-------------------------|--------------|
| 75.00 | gs w mco 10g 2w 18m 70o | 0.37 |
| 240.00 | gocm 10g 40o 50m | 1.84 |
| 0.00 | 840 GIP | 0.00 |
| | | |
| | | |
| | | |

* Recovery from multiple tests

Gas Rates

| | Choke (Inches) | Pressure (psig) | Gas Rate (Mcf/d) |
|--|----------------|-----------------|------------------|
|--|----------------|-----------------|------------------|

ROCK TYPES

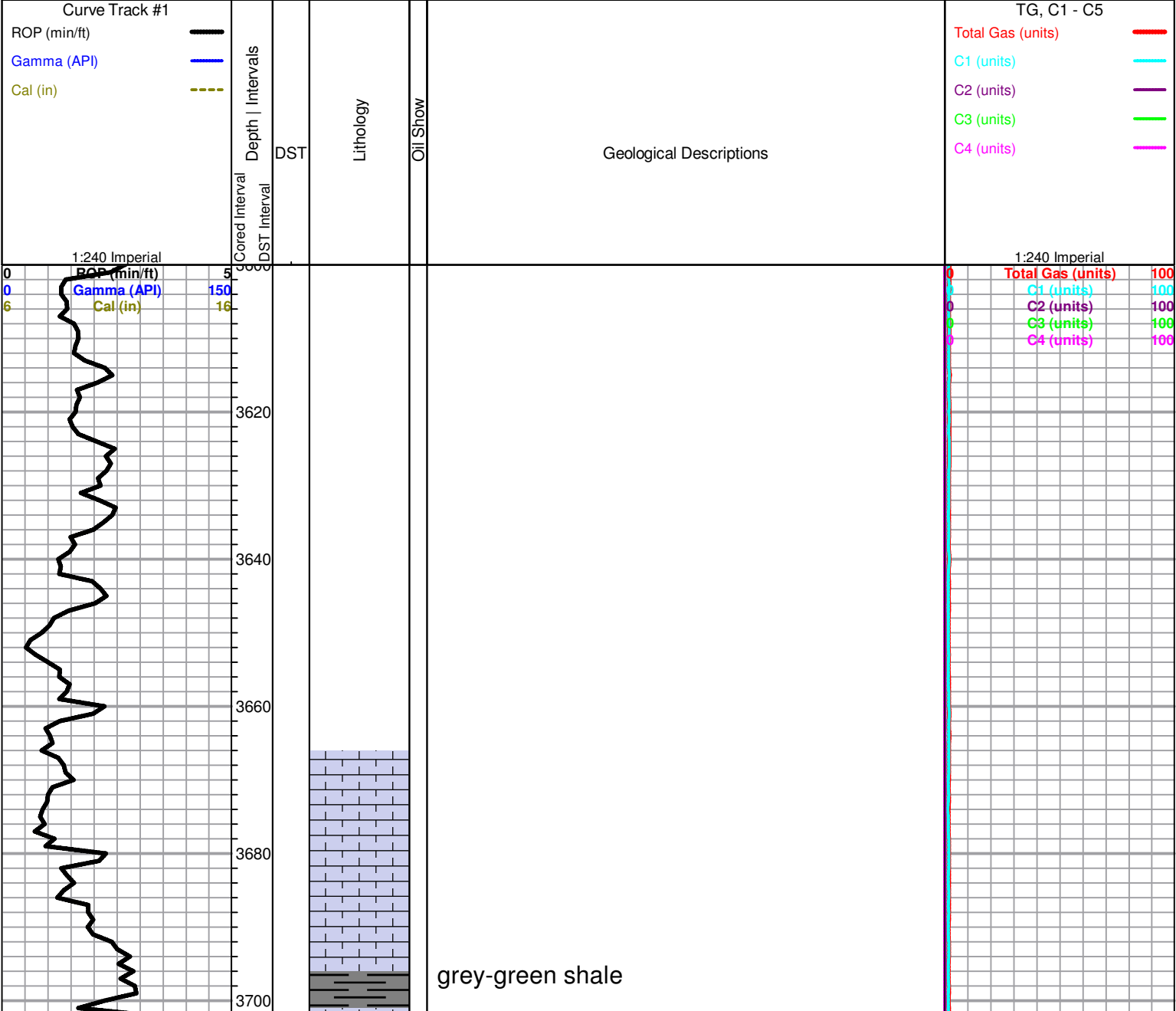
| | | | | | |
|--|-----------|---|------------|---|-----------|
|  | sdymst |  | shale, grn |  | Carbon Sh |
|  | Lmst fw7> |  | shale, gry |  | Ss |

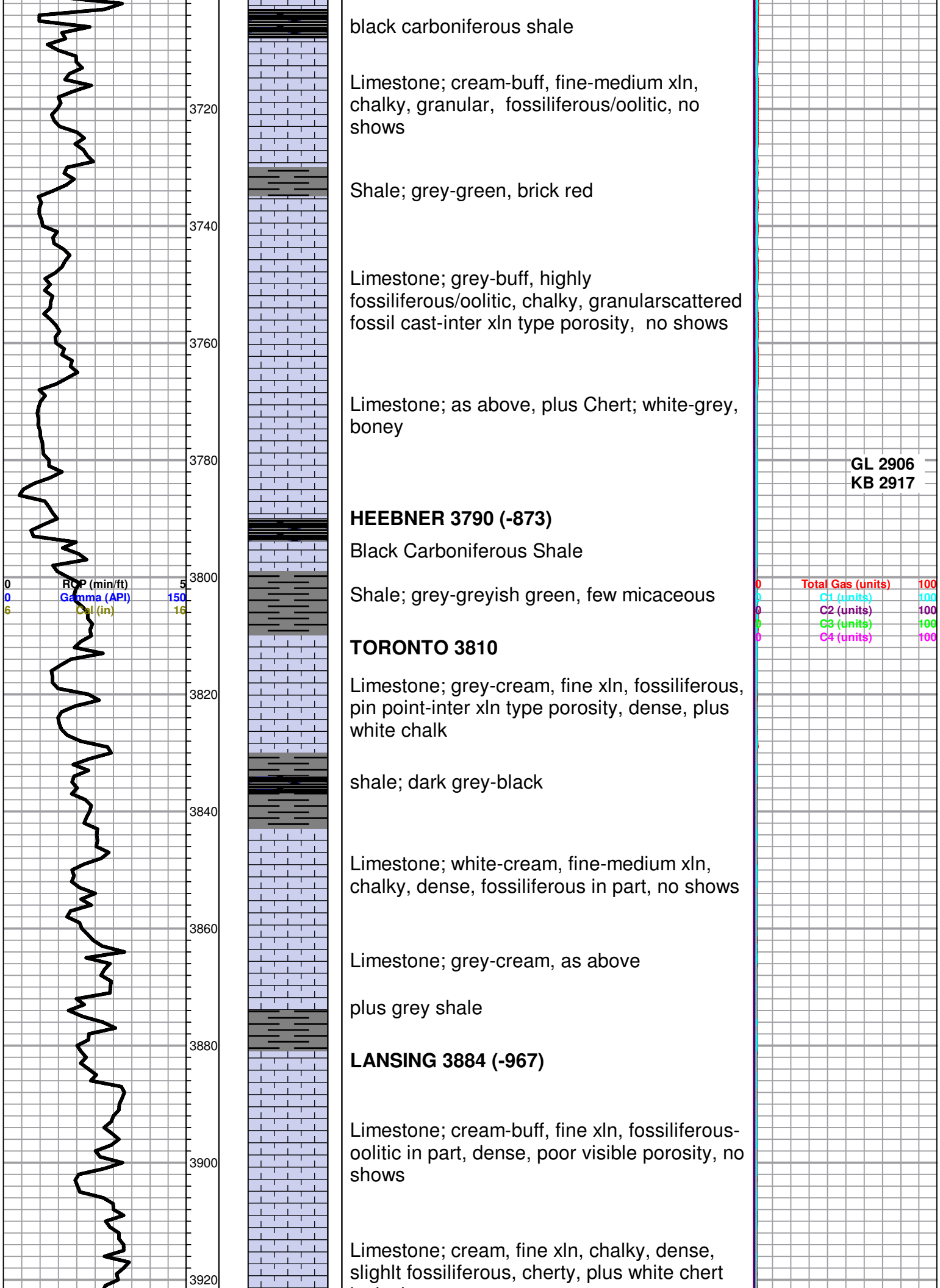
OTHER SYMBOLS

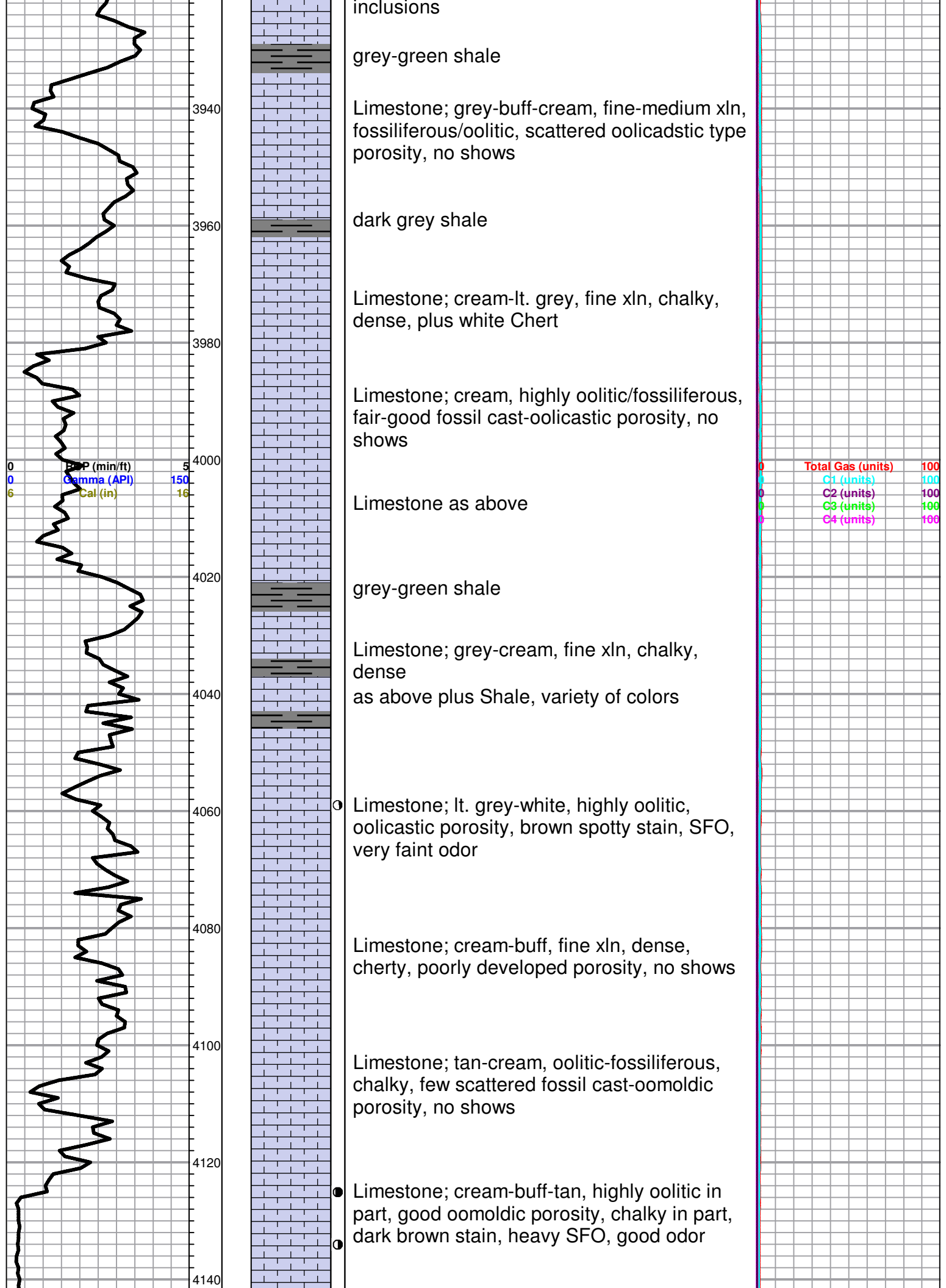
DST

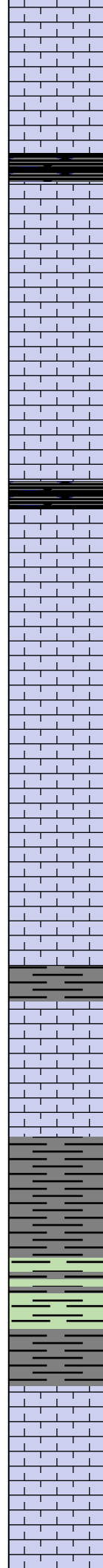
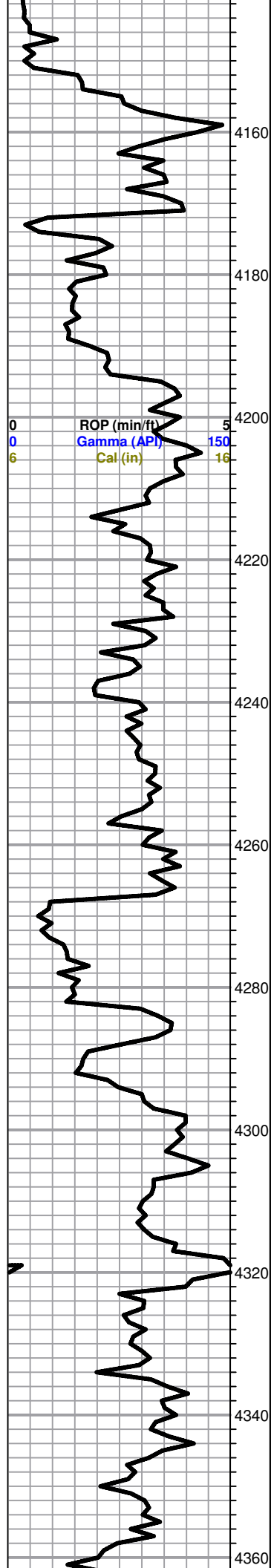
| | |
|---|-----------|
|  | DST Int |
|  | DST alt |
|  | Core |
|  | tail pipe |

Printed by GEOstrip VC Striplog version 4.0.7.0 (www.grsi.ca)









as above few barren pieces

BASE POROSITY BREAK 4152

black carboniferous shale

Limestone; cream, oomoldic, chalky, few scattered oomoldic-sub oomoldic porosity, plus white chalk

Limestone; cream-tan, fine xln, chalky, dense

black carboniferous shale

Limestone; tan-cream, highly oolitic, dense, poorly developed porosity, no shows

○ Limestone; cream-grey, fine-micro xln, dense, poorly developed porosity, cherty, trace brown stain, trace free oil, plus grey, boney; Chert

○ Limestone; tan-cream, highly oolitic in part, sub oomoldic, fair oomoldic porosity SFO, dark brown stain, faint odor (possible up hole)

grey shale

○ Limestone; grey-buff, fine-medium xln, chalky, sub oomoldic, golden brown stain, slight SFO, no odor

BASE KANSAS CITY 4304 (-1386)

Shale; grey-green, silty in part, few micaceous pieces

Shale; as above grey-green-maroon, soft

MARMATON 4334 (-1417)

Limestone; lt. grey-cream, fine-medium xln, chalky in part, finely oolitic-fossiliferous, poor porosity, no shows

| | | |
|---|-------------------|-----|
| 0 | Total Gas (units) | 100 |
| 0 | C1 (units) | 100 |
| 0 | C2 (units) | 100 |
| 0 | C3 (units) | 100 |
| 0 | C4 (units) | 100 |

DST#1 4398-4426
30-30-30-30
Blow: weak-none

