

AUSTIN B. KLAUS



Cell 785.650.3629
Work 785.483.3145
Ext 225

PO BOX 352
Russell, KS 67665
austin.klaus@johnofarmer.com

Scale 1:240 (5"=100') Imperial
Measured Depth Log

Well Name: Haase #1
Location: Ellsworth County
License Number: API # 15-053-21303-0000
Spud Date: 1/27/14
Surface Coordinates: Section 34 - Township 14 South - Range 9 West
2,400' FWL & 835' FWL
Bottom Hole Coordinates: Vertical well with minimal deviation, same as above
Ground Elevation (ft): 1,613' **K.B. Elevation (ft):** 1,623'
Logged Interval (ft): 2,300' **To:** RTD **Total Depth (ft):** 3,020'
Formation: Lansing
Type of Drilling Fluid: Chemical (Mud Co.)

Region: Kansas
Drilling Completed: 2/4/14

Printed by STRIP.LOG from WellSight Systems 1-800-447-1534 www.WellSight.com

OPERATOR

Company: John O. Farmer, Inc.
Address: P.O. Box 352
Russell, KS 67665

Comments

The Haase #1 well was drilled by Val Energy Rig #6 (Tool Pusher: Randy Martin).

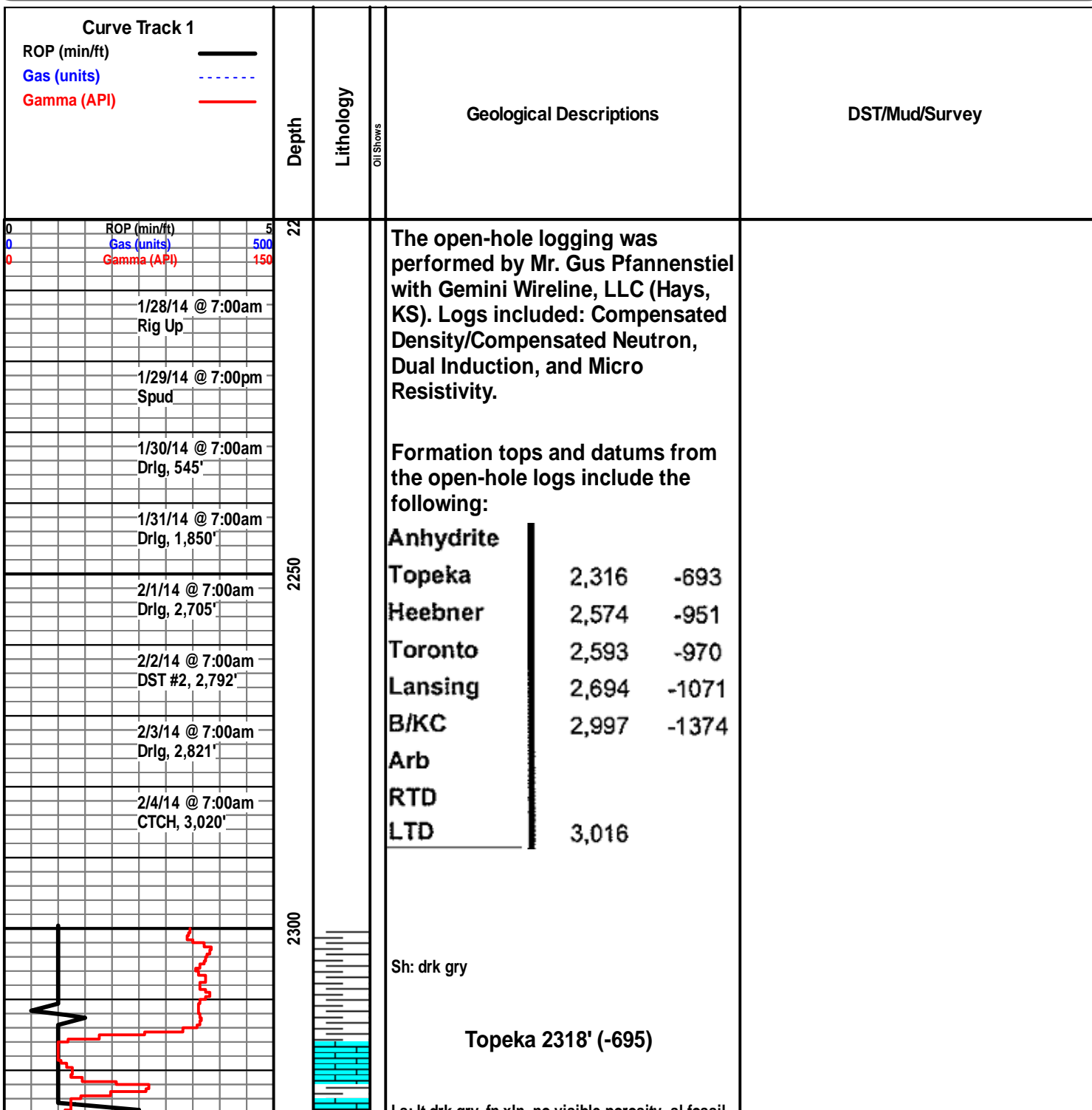
The location for the Haase #1 well was found via 3-D seismic survey. Geologic samples were collected and evaluated from 2,200'-3,020'. Structurally, the Haase #1 ran 10' high the nearest producing well. Four bottom-hole tests were conducted in the LNSG, all of which yielded negative results. Detailed electric logs were run from 2,300-3,020'. After all sample, log, and drill stem test data was gathered and evaluated, the decision was made to plug and abandon the Haase #1 well on 2/4/14.

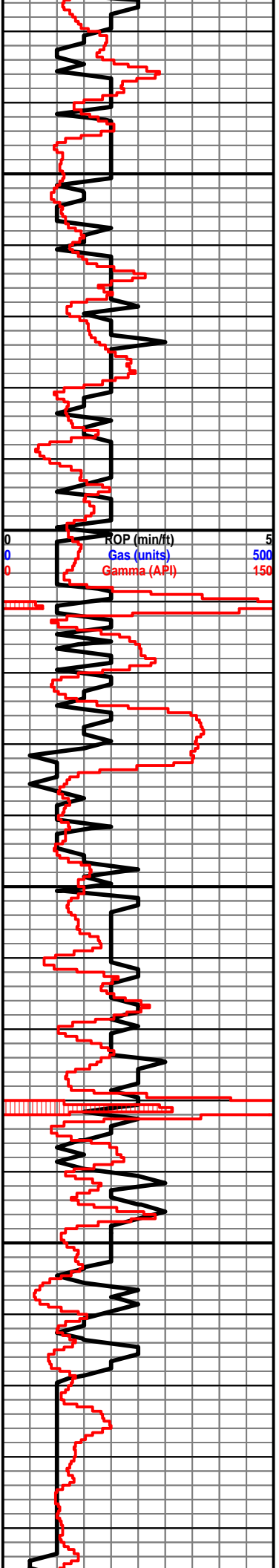
ROCK TYPES

 Anhy	 Clyst	 Gyp	 Mrlst	 Shgy
 Bent	 Coal	 Igne	 Salt	 Sltst
 Brec	 Congl	 Lmst	 Shale	 Ss
 Cht	 Dol	 Meta	 Shcol	 Till

OTHER SYMBOLS

POROSITY	<input checked="" type="checkbox"/> Vuggy	ROUNDING	<input type="checkbox"/> Spotted	EVENT
<input type="checkbox"/> Earthy	SORTING	<input type="checkbox"/> Rounded	<input type="checkbox"/> Ques	<input type="checkbox"/> Rft
<input type="checkbox"/> Fenest	<input type="checkbox"/> Well	<input type="checkbox"/> Subrnd	<input type="checkbox"/> Dead	<input type="checkbox"/> Sidewall
<input type="checkbox"/> Fracture	<input type="checkbox"/> Moderate	<input type="checkbox"/> Subang	INTERVAL	
<input type="checkbox"/> Inter	<input type="checkbox"/> Poor	<input type="checkbox"/> Angular	<input type="checkbox"/> Core	
<input type="checkbox"/> Moldic		OIL SHOW	<input type="checkbox"/> Dst	
<input type="checkbox"/> Organic		<input type="checkbox"/> Even		
<input type="checkbox"/> Pinpoint				





Sh: drk gry

Sh: lt gry, soft

Ls: lt gry, fn-sub xln, mostly DNS, scat sltst

Ls: tan-lt gry, fn xln, mostly DNS, scat chert-off wh

Ls: ala

Sh: drk gry

Ls: tan-gry, fn-sub xln, mostly DNS, scat sltst, scat pyrite

Sh: lt-drk gry, scat sltst

Ls: tan-brn-gry, fn xln, poor int xln porosity, fossil, sl chalky

Ls: ala

Sh: lt-drk gry, few pcs soft

Ls: tan-brn, fn xln, scat poor int xln porosity, scat chert-off wh

Ls: lt gry-tan, fn-sub xln, mostly DNS, scat chert-off wh

Ls: ala

Ls: tan-brn, fn xln, scat int xln porosity, mostly barren, chalky, scat sltst

Sh: gry

Ls: tan-lt gry, fn-sub xln, mostly DNS, sl fossil

Ls: tan-lt gry, fn xln, poor int xln porosity, scat oil st, NSFO, no odor, sl fossil

Sh: drk gry, scat sltst

Sh: ala

Ls: tan-gry, fn xln, mostly DNS, scat fossil, sl chalky

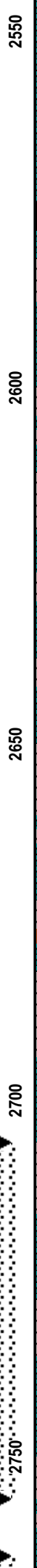
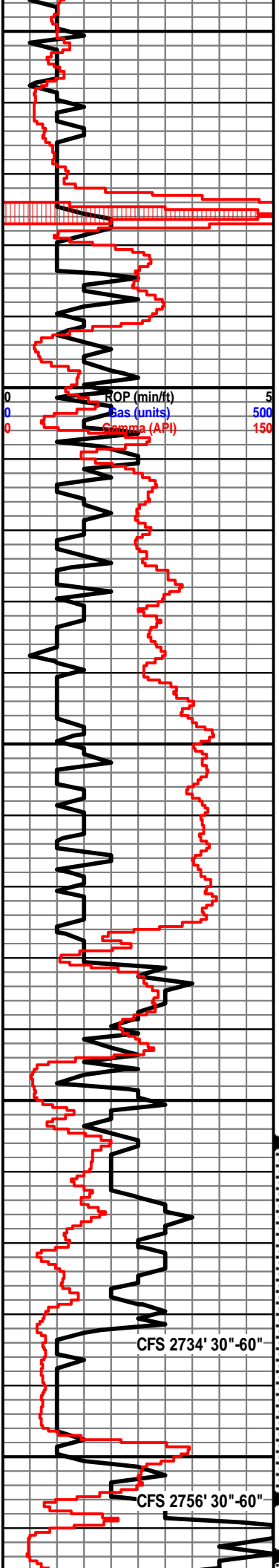
Ls: lt gry, fn-sub xln, mostly DNS, scat fossil, scat

2350

2400

2450

2500



Ls: lt gry-tan, fn-sub xln, mostly DNS, fossil, scat
qtz: off wh, sub rnd, poorly sorted, fairly well
cemented, DNS

Ls: ala

Ls: tan-gry, fn xln, mostly DNS, no visible
porosity, scat chert-off wh

Heebner 2578' (-955)

Sh: blk, carb, fissile

Ls: off wh-tan, fn xln, poor int xln porosity, sl
chalky

Toronto 2597' (-974)

Ls: off wh, fn xln, poor int xln porosity, scat oil st,
VSSFO, sl odor

Ls: tan-gry, fn-sub xln, mostly DNS, scat chert-off
wh, sl chalky, scat sltst

Ls: ala

Ls: tan-gry, fn-sub xln, mostly DNS, chert-off wh,
sl fossil

Wt: 9.1
Vis: 51

Ls: tan-brn, fn xln, vry poor int xln porosity, scat
oil st, NSFO, no odor, fossil

Sh: drk gry, few pcs soft

DST #1 2,706-2,756' (LKC A-C)
30"-30"-45"-45"

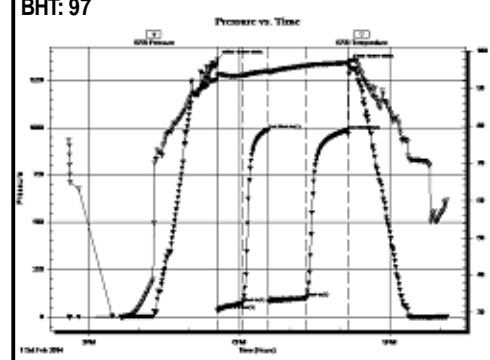
IF: weak blow, built to 9"
FF: weak blow built to 3.5"
Rec: 140' WM (40% W, 60% M)
FP: 33-74, 85-100#
SIP: 986-985#
HP: 1,359-1,338#
BHT: 97

Ls: tan-gry, fn-sub xln, mostly DNS

Sh: drk gry-grn-brn, soft

Slst: drk gry

Sh: drk gry-brn, soft



Lansing 2704' (-1081)

Ls: off wh-tan, fn xln, ool, fair oom porosity, vry lt
oil st, VSSFO, lt odor, sl chalky

Ls: off wh-tan, fn xln, scat pp vuggy porosity,
chalky, sl chert-off wh

Sh: lt-drk gry-brn

Ls: off wh, fn xln, ool, fair-good oom porosity,
mostly barren, vry lt oil sat, VSSFO, sl odor

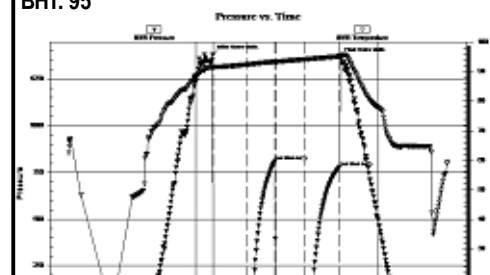
Ls: off wh, fn xln, ool, fair-good oom porosity, sl
oil sat, SSFO, sl odor, chert-off wh, sl chalky

DST #2 2,764-2,792' (LKC E)
30"-30"-30"-30"

IF: weak blow, built to 1"
FF: no blow
Rec: 5' WM (2% W, 98% M)
FP: 13-15, 18-18#
SIP: 809-779#
HP: 1,380-1,364#
BHT: 95

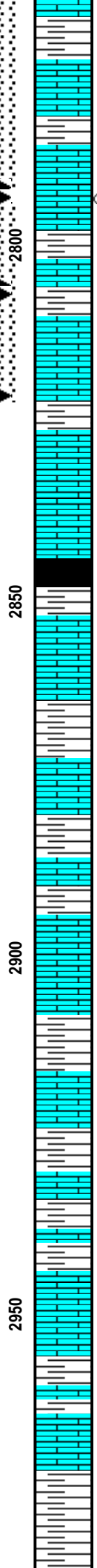
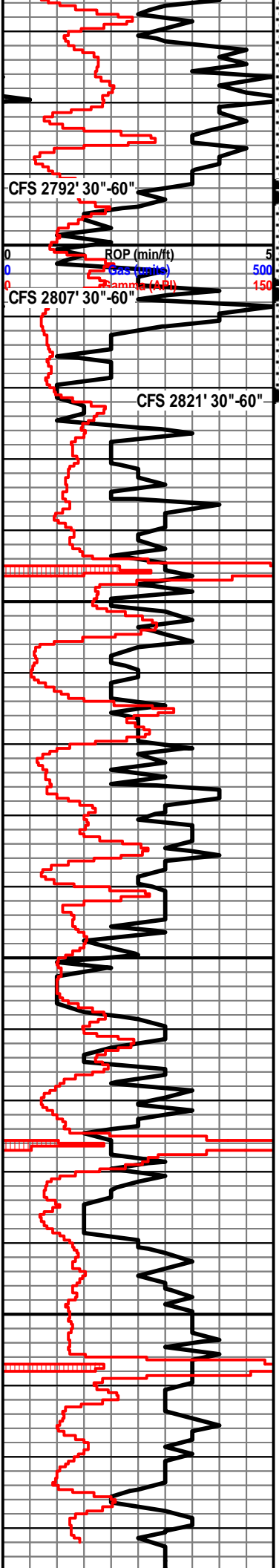
Sh: drk gry

Ls: tan-gry, fn xln, poor int xln porosity, mostly
barren. NSFO. scat pyrite



CFS 2734' 30"-60"

CFS 2756' 30"-60"



Sh: gry-brn

Ls: tan-lt gry, fn xln, poor int xln porosity, sl oil st, VSSFO, sl odor, scat fossil

Sh: drk gry-brn

Ls: off wh, fn xln, ool, fair oom porosity, lt oil st, SSFO, sl-fair odor, chalky, sl chert-off wh

Sh: gry

Ls: off wh, fn xln, ool, fair-good oom porosity, mostly barren, NSFO, sl chert-off wh

Sh: drk gry-brn

Ls: tan-gry, fn xln, ool, fair oom porosity, barren, NSFO, scat chert-off wh

Ls: ala

Sh: drk gry-blk

Ls: off wh-tan, fn xln, poor int xln porosity, barren, NSFO, scat chalk, chert-off wh

Ls: tan-gry, fn xln, scat int xln porosity, mostly DNS, barren, NSFO, chalky

Sh: drk gry-brn, scat blk

Ls: off wh-gry, fn xln, scat pp vuggy porosity, scat oil st, NSFO, no odor, chalky, chert-off wh

Sh: drk gry-brn

Ls: off wh-tan, fn xln, ool, fair-good oom porosity, barren, NSFO, no odor, chalky

Sh: drk gry

Ls: off wh, fn xln, mostly DNS, no visible porosity, chalky

Sh: gry

Sh: drk gry-blk, carb

Sh: lt-drk gry, soft

Ls: tan-gry, fn-sub xln, mostly DNS, barren, NSFO, hvy chert-off wh

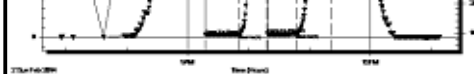
Sh: drk gry-brn

Ls: ala

Ls: tan-gry, fn xln, mostly DNS, barren, NSFO
B/KC 2971' (-1348)

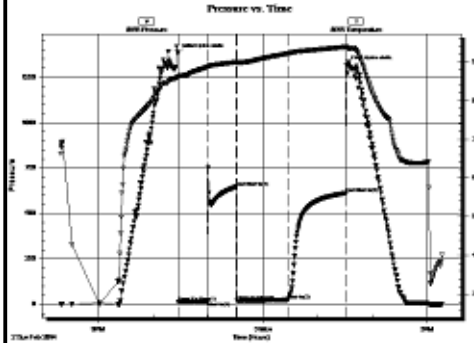
Sh: lt-drk gry-brn

Sh: ala



DST #3 2,793-2,807' (LKC F)
30"-30"-60"-60"

IF: weak blow, built to 1"
FF: weak surface blow, died in 21 minutes
Rec: 10' M
FP: 12-17, 19-24#
SIP: 647-612#
HP: 1,382-1,317#
BHT: 94



DST #4 2,806-2,821' (LKC G)
30"-30"-30"-30"

IF: BOB in 18 minutes, no blow back on SI
FF: weak surface blow, built to 7"
Rec: 268' MW
FP: 15-89, 91-135#
SIP: 633-632#
HP: 1,382-1,354#
BHT: 102

