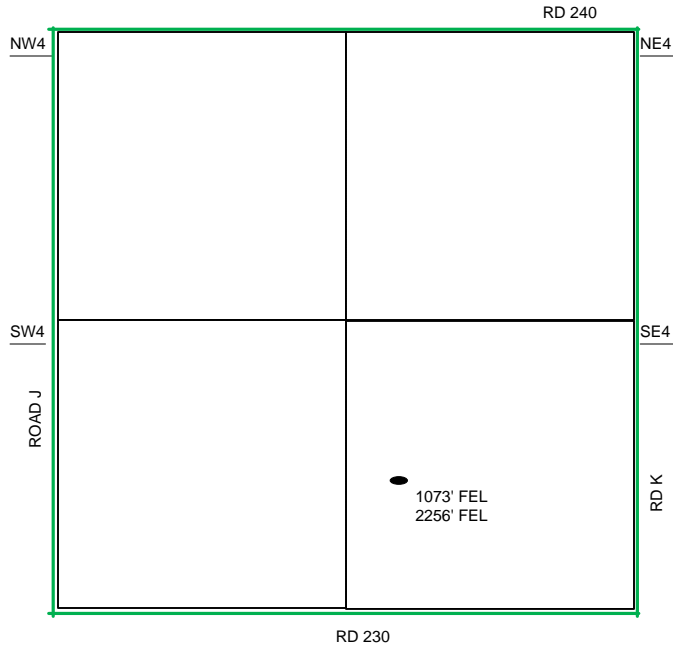
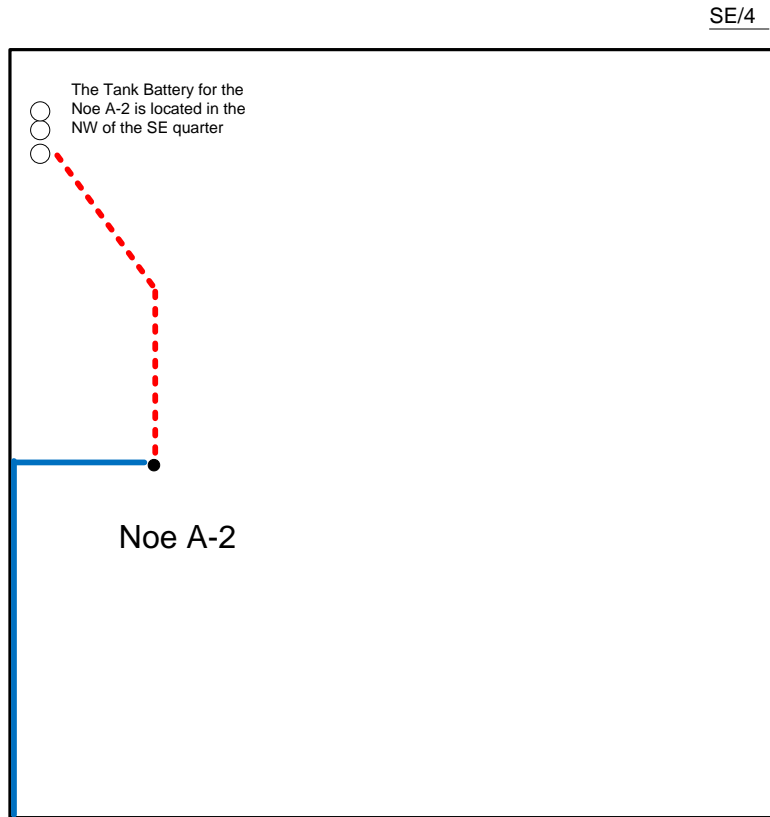


Proposed Plan of Construction

Noe A-2  
Sec 9 T23S-R37W  
Kearny County, KS



Sec 9 – T23S – R37W



Proposed Details of  
SE/4 Sec 9 – T23S – R37W

Note-Drawing **Not** to Scale

Proposed Site Diagram  
Noe A-2  
May 21, 2014