

GEOLOGIST'S REPORT

DRILLING TIME AND SAMPLE LOGS

COMPANY: Range Oil Company, Inc.
 LEASE: Bowman #3
 FIELD: 1596 FEL + 550' FWL SW/4
 LOCATION: 4 TWP 29 S R5 E
 COUNTY: Butler STATE: KS
 CONTRACTOR: Summit Drilling Rig #1
 SPUD: 4/18/14 OOH: 4/28/14
 RID: 3180' LTD: NONE
 MUD UP: 1700' TYPE MUD: clean
 ELECTRICAL SURVEYS: None

SAMPLES SAVED FROM: 2000' TO RTD
 DRILLING TIME KEPT FROM: 2000' TO RTD
 SAMPLES EXAMINED FROM: 2000' TO RTD
 GEOLOGICAL SUPERVISION FROM: 2000' TO RTD
 GEOLOGIST ON WELL: Ken Wallace

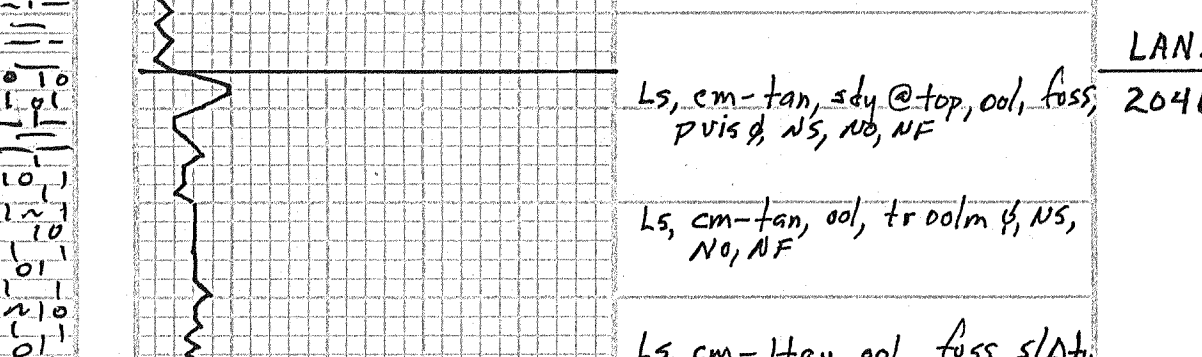
FORMATION TOPS

FORMATION	TOPS	SAMPLES
Lansing	2046 (-724)	
B/Lansing	2194 (-863)	
Kansas City	2398 (-1073)	
B/Kansas City	2621 (-1296)	
Miss A	2902 (-1577)	
Kinderhook	3060 (-1735)	
Upper Simp sd	3170 (-1845)	
Lower Simp sd	3174 (-1849)	
Miss LM	3180 (-1859)	

REMARKS: Bowman #3 ran low to key well. Had 2 negative DSTs. Plugged & abandoned.
 Ken Wallace

4/18/14 MIRT
 4/18/14 RTRT Spud
 4/20/14 Drig @ 561'
 4/21/14 Drig @ 1253'; 1/4" @ 174'; 1/2" @ 177'
 4/22/14 Drig @ 1811'; 1/4" @ 181'; 1/2" @ 182'
 4/23/14 Drig @ 2324'; 1/4" @ 2182'; 1/2" @ 2591'
 4/24/14 Drig @ 3000'; 1/2" @ 3031'
 4/25/14 Drig @ 3092'; Full trip - rig repairs
 4/27/14 Drig @ 3155'; Run DST #1 3120'-3145'
 4/28/14 RTR 3180'; Run DST #2 3120'-3162'
 P&A

LEGEND



SCALE 1" = 100'

