



## DRILL STEM TEST REPORT

Prepared For: **RJM Company**

P.O. Box 256  
Clafin Ks, 67525-0256

ATTN: Jim Musgrove

### **Grasmick #1**

### **34/15s/13w/Russell**

Start Date: 2014.04.21 @ 16:35:00

End Date: 2014.04.21 @ 23:39:00

Job Ticket #: 19233                      DST #: 3

Superior Testers Enterprises LLC  
PO Box 138 Great Bend KS 67530  
1-800-792-6902

Printed: 2014.04.22 @ 01:02:04

RJM Company  
34/15s/13w/Russell  
Grasmick #1  
DST # 3  
LKC "H-K"  
2014.04.21



# DRILL STEM TEST REPORT

RJM Company  
 P.O. Box 256  
 Claflin Ks, 67525-0256  
 ATTN: Jim Musgrove

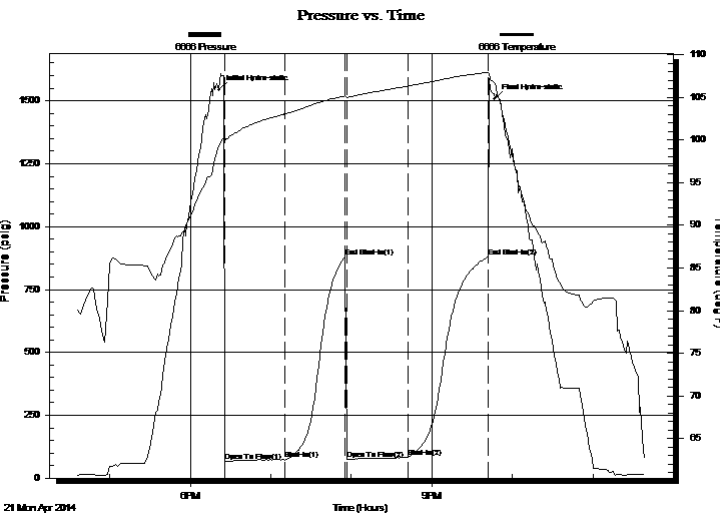
**34/15s/13w/Russell**  
**Grasmick #1**  
 Job Ticket: 19233 **DST#: 3**  
 Test Start: 2014.04.21 @ 16:35:00

## GENERAL INFORMATION:

Formation: **LKC "H-K"**  
 Deviated: No Whipstock: ft (KB)  
 Time Tool Opened: 18:25:30  
 Time Test Ended: 23:39:00  
 Interval: **3153.00 ft (KB) To 3240.00 ft (KB) (TVD)**  
 Total Depth: 3240.00 ft (KB) (TVD)  
 Hole Diameter: 7.88 inches Hole Condition: Poor  
 Test Type: Conventional Bottom Hole (Initial)  
 Tester: Shane Konzem  
 Unit No: 3335/50/Great Bend  
 Reference Elevations: 1870.00 ft (KB)  
 1862.00 ft (CF)  
 KB to GR/CF: 8.00 ft

**Serial #: 6666 Inside**  
 Press@RunDepth: 83.62 psig @ 3236.67 ft (KB) Capacity: 5000.00 psig  
 Start Date: 2014.04.21 End Date: 2014.04.21 Last Calib.: 2014.04.22  
 Start Time: 16:35:00 End Time: 23:39:00 Time On Btm: 2014.04.21 @ 18:21:30  
 Time Off Btm: 2014.04.21 @ 21:47:00

**TEST COMMENT:** 1st Open/ 45 Minutes. Weak blow built to 2 inches into bucket of water.  
 1st Shut In/ 45 Minutes. No blow back.  
 2nd Open/ 45 Minutes. Weak blow built to 3 inches into bucket of water.  
 2nd Shut In/ 60 Minutes. No blow back.



## PRESSURE SUMMARY

Time (Min.)	Pressure (psig)	Temp (deg F)	Annotation
0	1544.14	99.26	Initial Hydro-static
4	67.59	99.84	Open To Flow (1)
49	74.28	103.03	Shut-In(1)
95	880.87	105.14	End Shut-In(1)
95	74.01	104.97	Open To Flow (2)
141	83.62	106.30	Shut-In(2)
200	878.99	107.91	End Shut-In(2)
206	1508.11	106.64	Final Hydro-static

## Recovery

Length (ft)	Description	Volume (bbl)
40.00	Oil, cut Mud	0.56

## Gas Rates

	Choke (inches)	Pressure (psig)	Gas Rate (Mcf/d)



# DRILL STEM TEST REPORT

RJM Company

34/15s/13w/Russell

P.O. Box 256  
Claflin Ks, 67525-0256

Grasmick #1

Job Ticket: 19233

DST#: 3

ATTN: Jim Musgrove

Test Start: 2014.04.21 @ 16:35:00

## GENERAL INFORMATION:

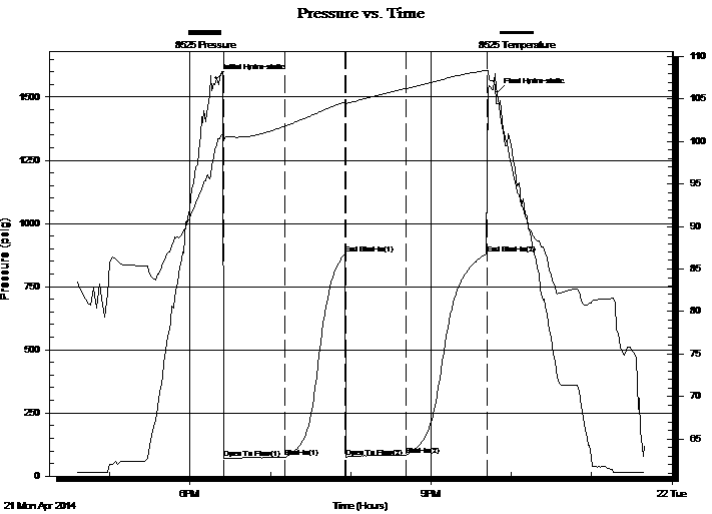
Formation: LKC "H-K"	
Deviated: No Whipstock: ft (KB)	Test Type: Conventional Bottom Hole (Initial)
Time Tool Opened: 18:25:30	Tester: Shane Konzem
Time Test Ended: 23:39:00	Unit No: 3335/50/Great Bend
Interval: 3153.00 ft (KB) To 3240.00 ft (KB) (TVD)	Reference Elevations: 1870.00 ft (KB)
Total Depth: 3240.00 ft (KB) (TVD)	1862.00 ft (CF)
Hole Diameter: 7.88 inches	Hole Condition: Poor
	KB to GR/CF: 8.00 ft

## Serial #: 8525

Outside

Press@RunDepth: 879.89 psig @ 3237.67 ft (KB)	Capacity: 5000.00 psig
Start Date: 2014.04.21	End Date: 2014.04.21
Start Time: 16:35:00	End Time: 23:39:30
	Last Calib.: 2014.04.22
	Time On Btm: 2014.04.21 @ 18:19:30
	Time Off Btm: 2014.04.21 @ 21:49:30

TEST COMMENT: 1st Open/ 45 Minutes. Weak blow built to 2 inches into bucket of water.  
 1st Shut In/ 45 Minutes. No blow back.  
 2nd Open/ 45 Minutes. Weak blow built to 3 inches into bucket of water.  
 2nd Shut In/ 60 Minutes. No blow back.



## PRESSURE SUMMARY

Time (Min.)	Pressure (psig)	Temp (deg F)	Annotation
0	1573.81	99.46	Initial Hydro-static
6	70.91	100.10	Open To Flow (1)
52	74.67	101.83	Shut-In(1)
96	881.11	104.64	End Shut-In(1)
97	76.40	104.49	Open To Flow (2)
142	83.70	106.25	Shut-In(2)
202	879.89	108.37	End Shut-In(2)
210	1518.11	104.43	Final Hydro-static

## Recovery

Length (ft)	Description	Volume (bbl)
40.00	Oil, cut Mud	0.56

## Gas Rates

	Choke (inches)	Pressure (psig)	Gas Rate (Mcf/d)



# DRILL STEM TEST REPORT

TOOL DIAGRAM

RJM Company

34/15s/13w/Russell

P.O. Box 256  
Clafin Ks, 67525-0256

Grasmick #1

Job Ticket: 19233

DST#: 3

ATTN: Jim Musgrove

Test Start: 2014.04.21 @ 16:35:00

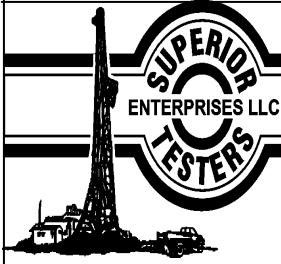
## Tool Information

Drill Pipe:	Length: 3143.00 ft	Diameter: 3.80 inches	Volume: 44.09 bbl	Tool Weight: 2000.00 lb
Heavy Wt. Pipe:	Length: 0.00 ft	Diameter: 0.00 inches	Volume: 0.00 bbl	Weight set on Packer: 25000.00 lb
Drill Collar:	Length: 0.00 ft	Diameter: 0.00 inches	Volume: 0.00 bbl	Weight to Pull Loose: lb
			Total Volume: 44.09 bbl	Tool Chased 1.00 ft
Drill Pipe Above KB:	10.00 ft			String Weight: Initial 51000.00 lb
Depth to Top Packer:	3153.00 ft			Final lb
Depth to Bottom Packer:	ft			
Interval between Packers:	87.67 ft			
Tool Length:	107.67 ft			
Number of Packers:	2	Diameter: 6.75 inches		
Tool Comments:				

Tool Description	Length (ft)	Serial No.	Position	Depth (ft)	Accum. Lengths
------------------	-------------	------------	----------	------------	----------------

Shut-In Tool	5.00			3138.00	
Hydraulic Tool	5.00			3143.00	
Top Packer	5.00			3148.00	
Packer	5.00			3153.00	20.00 Bottom Of Top Packer
Anchor	0.00			3153.00	
Change Over Sub	0.75			3153.75	
Drill Pipe	62.17			3215.92	
Change Over Sub	0.75			3216.67	
Anchor	19.00			3235.67	
Recorder	1.00	6666	Inside	3236.67	
Recorder	1.00	8525	Outside	3237.67	
Bull Plug	3.00			3240.67	87.67 Anchor Tool

**Total Tool Length: 107.67**



# DRILL STEM TEST REPORT

**FLUID SUMMARY**

RJM Company

**34/15s/13w/Russell**

P.O. Box 256  
Clafin Ks, 67525-0256

**Grasmick #1**

Job Ticket: 19233

**DST#: 3**

ATTN: Jim Musgrove

Test Start: 2014.04.21 @ 16:35:00

## Mud and Cushion Information

Mud Type: Gel Chem  
Mud Weight: 9.00 lb/gal  
Viscosity: 43.00 sec/qt  
Water Loss: 9.60 in<sup>3</sup>  
Resistivity: ohm.m  
Salinity: 7000.00 ppm  
Filter Cake: inches

Cushion Type:  
Cushion Length: ft  
Cushion Volume: bbl  
Gas Cushion Type:  
Gas Cushion Pressure: psig

Oil API: deg API  
Water Salinity: ppm

## Recovery Information

Recovery Table

Length ft	Description	Volume bbl
40.00	Oil, cut Mud	0.561

Total Length: 40.00 ft      Total Volume: 0.561 bbl

Num Fluid Samples: 0      Num Gas Bombs: 0      Serial #:

Laboratory Name:      Laboratory Location:

Recovery Comments:

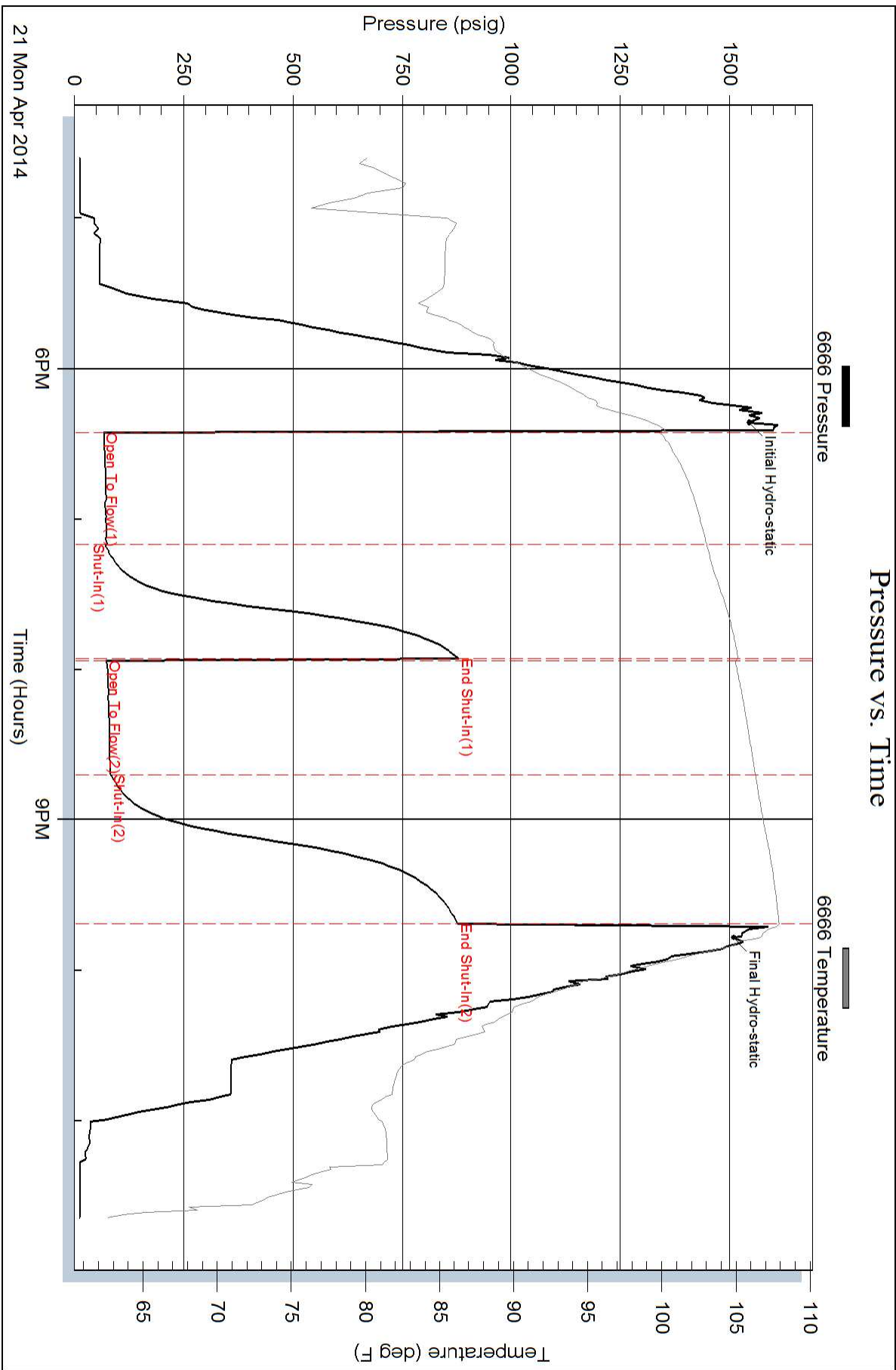
Serial #: 6666

Inside

RJM Company

Grasnick #1

DST Test Number: 3



Superior Testers Enterprises LLC

Ref. No: 19233

Printed: 2014.04.22 @ 01:02:04

