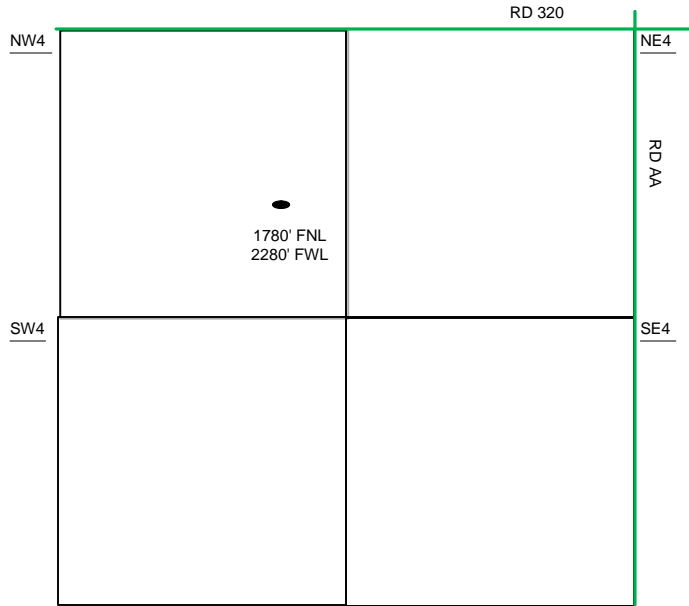
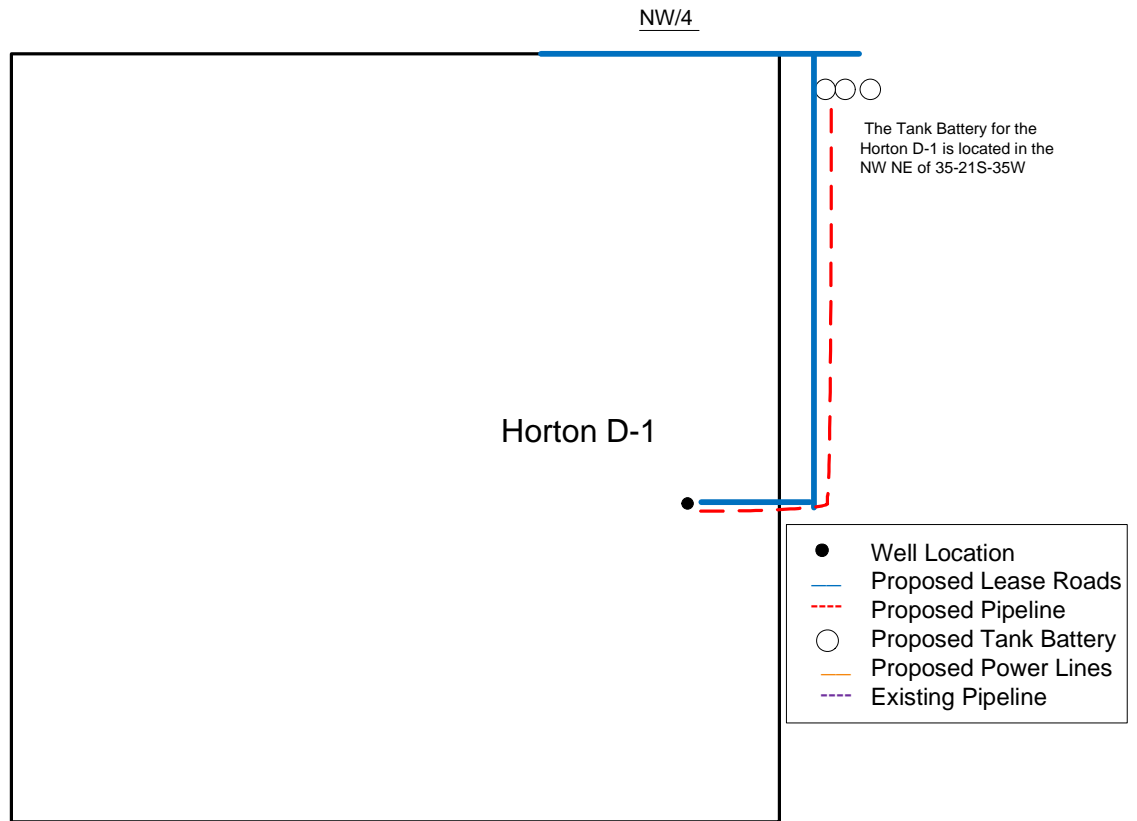


Proposed Plan of Construction
 Horton D-1
 Sec 35 T21S-R35W
 Kearny County, KS



Sec 35 - T21S - R35W



Proposed Details of
 NW/ Sec 35 - T21S - R35W

Note-Drawing **Not** to Scale

Proposed Site Diagram
 Horton D-1
 April 3rd, 2014

