

Thomas J. Funk  
Petroleum Geologist

**Geologists Report**  
**Drilling Time and Sample Log**

OPERATOR: Murfin Drilling Co., Inc

LEASE: Scheetz Trust  
FIELD: Wildcat  
LOCATION: 2305' FSL & 765' FWL  
SEC. 2  
COUNTY: Logan

WELL NO #1-2  
API: 15-109-21262  
TWP: 13S  
RGE: 33W  
STATE: Kansas

ELEVATION: KB 3112'  
DF: 15-109-21262  
GL: 3101'  
Measurements Are All From KB

CASING RECORD: SURFACE  
8 5/8" at 225' KB w/1855x

DRILLING TIME KEPT FROM 3700' TO 4815'  
SAMPLES EXAMINED FROM 3700' TO 4815'  
GEOLOGICAL SUPERVISION FROM 3790' TO 4815'  
MUD UP 3400' TYPE MUD Chemical

PRODUCTION: None  
ELECTRICAL SURVEYS: Pioneer Energy Services  
DIL: MEL  
DUQP: BHCS

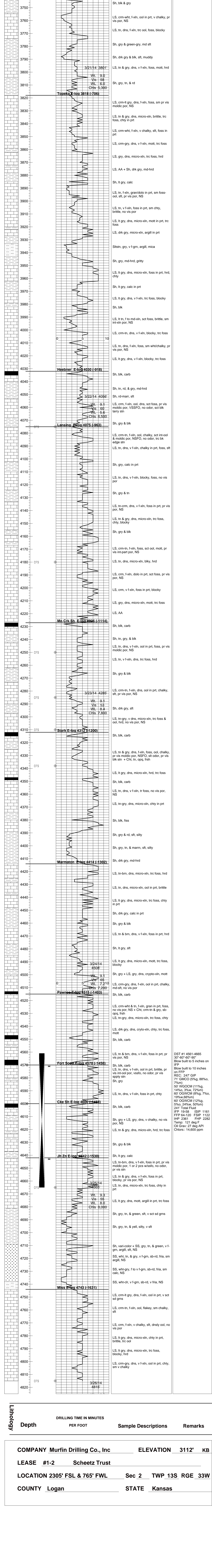
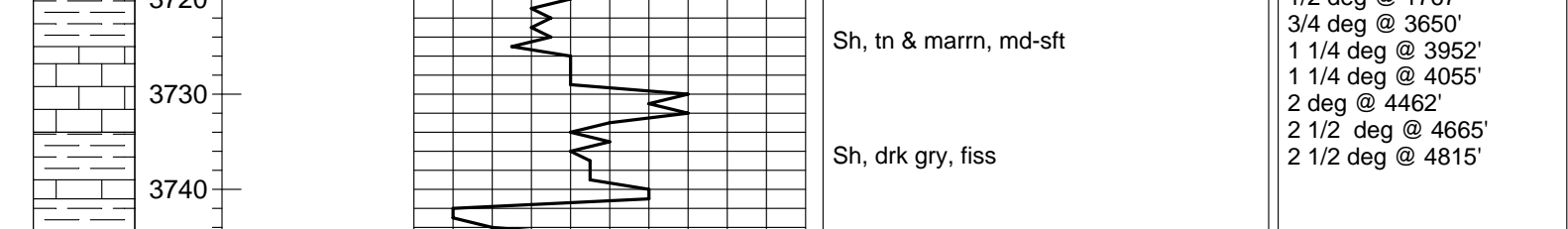
FORMATION	LOG	SAMPLE	TOP DATUM
Anhydrite	2590 (+522)	2593 (+519)	
Baryhydrite	2613 (+489)	2615 (+487)	
Topoka Sh	3818 (-706)	3818 (-706)	
Heebner Sh	4030 (-918)	4032 (-920)	
Lansing	4075 (-963)	4075 (-963)	
Muncie Creek	4226 (-1114)	4312 (-1200)	
Stark Sh	4312 (-1200)	4312 (-1200)	
Marmaton	4414 (-1302)	4414 (-1302)	
Pawnee	4515 (-1403)	4515 (-1403)	
Cherokee Sh	4600 (-1488)	4600 (-1488)	
Johnson Zone	4642 (-1530)	4642 (-1530)	
Mississippian	4743 (-1631)	4744 (-1632)	

Date	Daily Progress	NO. Stretches	Make	Type	Bit	Regrind	Out	Feet	Hours
3/18/14	Spud	1	12 1/4"	HTC	RR	225	225		3
3/19/14		2	7 7/8"	HTC	DP506F	3650	3425	38	
3/20/14		3	7 7/8"	HTC	GX200c	4665	1015	90	
3/21/14		4	7 7/8"	HTC	GX200c	4815	150	11	
3/23/14									
3/24/14									
3/25/14									
3/26/14									
3/27/14									

**Remarks And Recommendations:**

Based upon log analysis, DST recovery, and sample examination, it was decided to plug and abandon the #1-2 Scheetz Trust.  
Thomas Funk  
Petroleum Geologist

**LEGEND**



<b>COMPANY</b> Murfin Drilling Co., Inc	<b>ELEVATION</b> 3112'	<b>KB</b>
<b>LEASE</b> #1-2 Scheetz Trust		
<b>LOCATION</b> 2305' FSL & 765' FWL	<b>Sec 2</b>	<b>TWP 13S RGE 33W</b>
<b>COUNTY</b> Logan	<b>STATE</b> Kansas	