



## DRILL STEM TEST REPORT

Prepared For: **Murfin Drilling Co., Inc.**

250 N. Water Ste 300  
Wichita KS 67202

ATTN: Saman ShariFaie

### **Most #1-23**

#### **23-4S-31W Rawlins,KS**

Start Date: 2014.04.05 @ 20:34:00

End Date: 2014.04.06 @ 04:58:00

Job Ticket #: 55205                      DST #: 1

Trilobite Testing, Inc

PO Box 362 Hays, KS 67601

ph: 785-625-4778 fax: 785-625-5620

Printed: 2014.04.10 @ 09:22:52



**TRILOBITE TESTING, INC.**

# DRILL STEM TEST REPORT

Murfin Drilling Co., Inc.

**23-4S-31W Rawlins,KS**

250 N. Water Ste 300  
Wichita KS 67202

**Most #1-23**

Job Ticket: 55205

**DST#: 1**

ATTN: Saman ShariFaie

Test Start: 2014.04.05 @ 20:34:00

## GENERAL INFORMATION:

Formation: **Toronto - LKC B**

Deviated: No Whipstock: ft (KB)

Time Tool Opened: 22:48:15

Time Test Ended: 04:58:00

Test Type: Conventional Bottom Hole (Initial)

Tester: Royal Fisher

Unit No: #54

**Interval: 3876.00 ft (KB) To 3956.00 ft (KB) (TVD)**

Reference Elevations: 2879.00 ft (KB)

Total Depth: 3956.00 ft (KB) (TVD)

2868.00 ft (CF)

Hole Diameter: 7.88 inches Hole Condition: Good

KB to GR/CF: 11.00 ft

**Serial #: 6753**

**Inside**

Press@RunDepth: 147.18 psig @ 3877.00 ft (KB)

Capacity: 8000.00 psig

Start Date: 2014.04.05

End Date:

2014.04.06

Last Calib.:

2014.04.06

Start Time:

20:34:05

End Time:

04:57:59

Time On Btm:

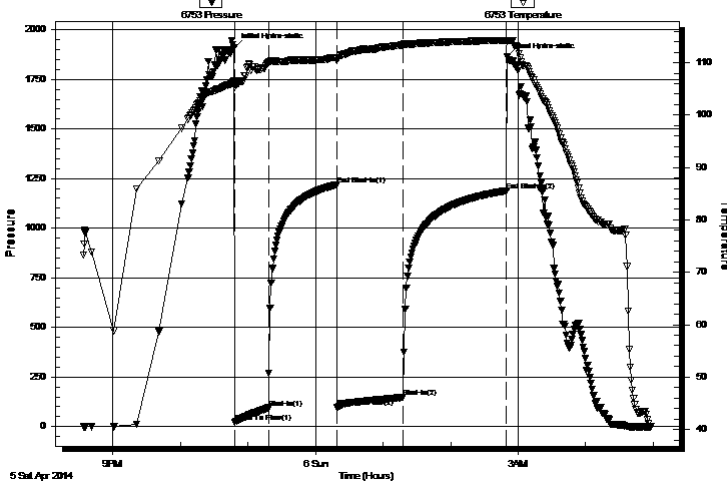
2014.04.05 @ 22:48:00

Time Off Btm:

2014.04.06 @ 02:50:30

**TEST COMMENT:** 30 - IF - Surface blow built to 3 3/4"  
60 - ISI - No Return  
60 - FF - Surface blow started 5 mins. into and built to 2 1/4"  
90 - FSI - No Return

Pressure vs. Time



## PRESSURE SUMMARY

Time (Min.)	Pressure (psig)	Temp (deg F)	Annotation
0	1909.93	106.59	Initial Hydro-static
1	22.97	105.31	Open To Flow (1)
31	93.96	109.95	Shut-In(1)
91	1218.99	110.97	End Shut-In(1)
92	98.77	110.42	Open To Flow (2)
150	147.18	113.41	Shut-In(2)
242	1188.73	114.20	End Shut-In(2)
243	1862.30	114.17	Final Hydro-static

## Recovery

Length (ft)	Description	Volume (bbl)
278.00	WM - 60M - 40W	2.01

## Gas Rates

	Choke (inches)	Pressure (psig)	Gas Rate (Mcf/d)





**TRILOBITE  
TESTING, INC**

# DRILL STEM TEST REPORT

**TOOL DIAGRAM**

Murfin Drilling Co., Inc.

**23-4S-31W Rawlins,KS**

250 N. Water Ste 300  
Wichita KS 67202

**Most #1-23**

Job Ticket: 55205

**DST#: 1**

ATTN: Saman ShariFaie

Test Start: 2014.04.05 @ 20:34:00

## Tool Information

Drill Pipe:	Length: 3661.03 ft	Diameter: 3.80 inches	Volume: 51.35 bbl	Tool Weight: 2500.00 lb
Heavy Wt. Pipe:	Length: 0.00 ft	Diameter: 0.00 inches	Volume: 0.00 bbl	Weight set on Packer: 25000.00 lb
Drill Collar:	Length: 207.34 ft	Diameter: 2.25 inches	Volume: 1.02 bbl	Weight to Pull Loose: 70000.00 lb
			<u>Total Volume: 52.37 bbl</u>	Tool Chased 0.00 ft
Drill Pipe Above KB:	19.37 ft			String Weight: Initial 64000.00 lb
Depth to Top Packer:	3876.00 ft			Final 65000.00 lb
Depth to Bottom Packer:	ft			
Interval between Packers:	80.00 ft			
Tool Length:	107.00 ft			
Number of Packers:	2	Diameter: 6.75 inches		

Tool Comments:

## Tool Description

Tool Description	Length (ft)	Serial No.	Position	Depth (ft)	Accum. Lengths
Shut In Tool	5.00			3854.00	
Hydraulic tool	5.00			3859.00	
Jars	5.00			3864.00	
Safety Joint	3.00			3867.00	
Packer	4.00			3871.00	27.00 Bottom Of Top Packer
Packer	5.00			3876.00	
Stubb	1.00			3877.00	
Recorder	0.00	8368	Inside	3877.00	
Recorder	0.00	6753	Inside	3877.00	
Perforations	10.00			3887.00	
Change Over Sub	1.00			3888.00	
Drill Pipe	63.00			3951.00	
Change Over Sub	1.00			3952.00	
Bullnose	4.00			3956.00	80.00 Bottom Packers & Anchor

**Total Tool Length: 107.00**



**TRILOBITE  
TESTING, INC**

# DRILL STEM TEST REPORT

## FLUID SUMMARY

Murfin Drilling Co., Inc.

**23-4S-31W Rawlins,KS**

250 N. Water Ste 300  
Wichita KS 67202

**Most #1-23**

Job Ticket: 55205

**DST#: 1**

ATTN: Saman ShariFaie

Test Start: 2014.04.05 @ 20:34:00

### Mud and Cushion Information

Mud Type: Gel Chem

Cushion Type:

Oil API:

deg API

Mud Weight: 9.00 lb/gal

Cushion Length:

ft

Water Salinity:

32000 ppm

Viscosity: 53.00 sec/qt

Cushion Volume:

bbbl

Water Loss: 5.99 in<sup>3</sup>

Gas Cushion Type:

Resistivity: 0.00 ohm.m

Gas Cushion Pressure:

psig

Salinity: 1500.00 ppm

Filter Cake: 2.00 inches

### Recovery Information

Recovery Table

Length ft	Description	Volume bbl
278.00	WM - 60M - 40W	2.011

Total Length: 278.00 ft      Total Volume: 2.011 bbl

Num Fluid Samples: 0

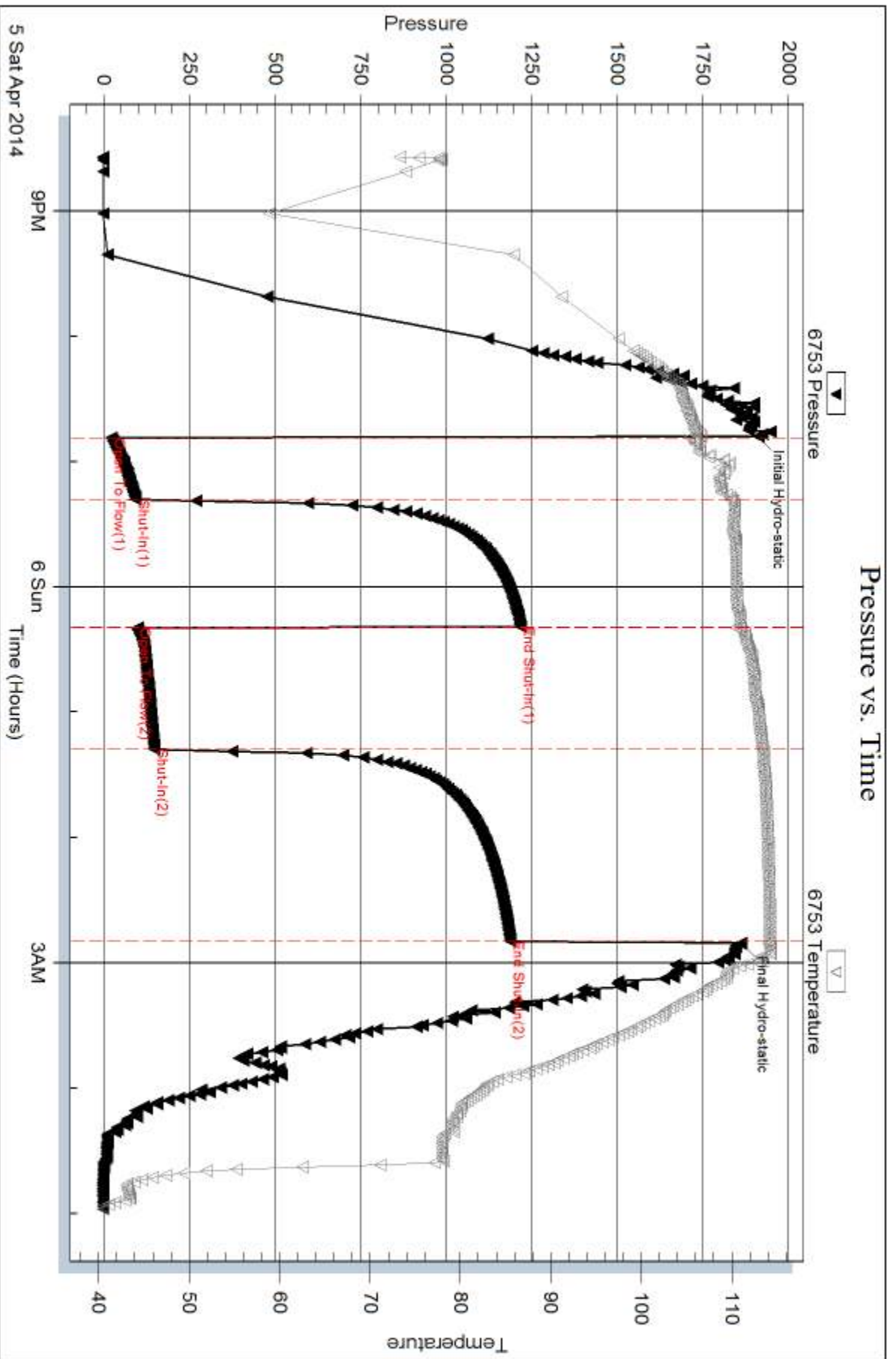
Num Gas Bombs: 0

Serial #:

Laboratory Name:

Laboratory Location:

Recovery Comments:



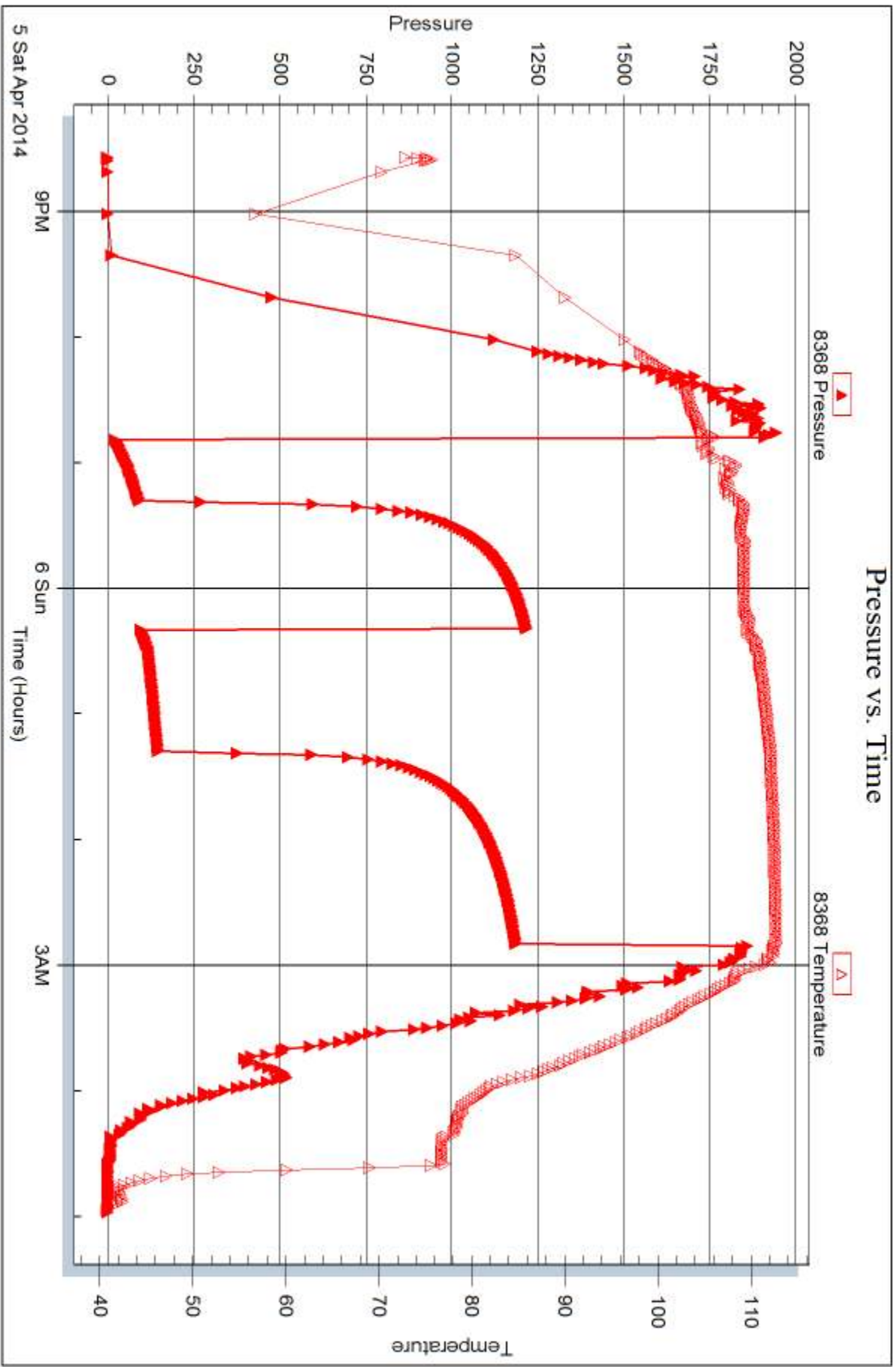
Serial #: 8368

Inside

Murfin Drilling Co., Inc.

Most #1-23

DST Test Number: 1





## DRILL STEM TEST REPORT

Prepared For: **Murfin Drilling Co., Inc.**

250 N. Water Ste 300  
Wichita KS 67202

ATTN: Saman ShariFaie

### **Most #1-23**

#### **23-4S-31W Rawlins,KS**

Start Date: 2014.04.06 @ 14:23:00

End Date: 2014.04.06 @ 21:43:15

Job Ticket #: 55206                      DST #: 2

Trilobite Testing, Inc  
PO Box 362 Hays, KS 67601  
ph: 785-625-4778 fax: 785-625-5620

Printed: 2014.04.10 @ 09:22:28





**TRILOBITE TESTING, INC.**

# DRILL STEM TEST REPORT

Murfin Drilling Co., Inc.

**23-4S-31W Rawlins,KS**

250 N. Water Ste 300  
Wichita KS 67202

**Most #1-23**

Job Ticket: 55206

**DST#: 2**

ATTN: Saman ShariFaie

Test Start: 2014.04.06 @ 14:23:00

## GENERAL INFORMATION:

Formation: **LKC D-G**

Deviated: No Whipstock: ft (KB)

Time Tool Opened: 16:37:30

Time Test Ended: 21:43:15

Test Type: Conventional Bottom Hole (Initial)

Tester: Royal Fisher

Unit No: #54

**Interval: 3956.00 ft (KB) To 4010.00 ft (KB) (TVD)**

Reference Elevations: 2879.00 ft (KB)

Total Depth: 4010.00 ft (KB) (TVD)

2868.00 ft (CF)

Hole Diameter: 7.88 inches Hole Condition: Good

KB to GR/CF: 11.00 ft

**Serial #: 6753**

**Inside**

Press@RunDepth: 50.91 psig @ 3957.00 ft (KB)

Capacity: 8000.00 psig

Start Date: 2014.04.06

End Date:

2014.04.06

Last Calib.:

2014.04.06

Start Time: 14:23:05

End Time:

21:43:14

Time On Btm:

2014.04.06 @ 16:37:15

Time Off Btm:

2014.04.06 @ 19:39:00

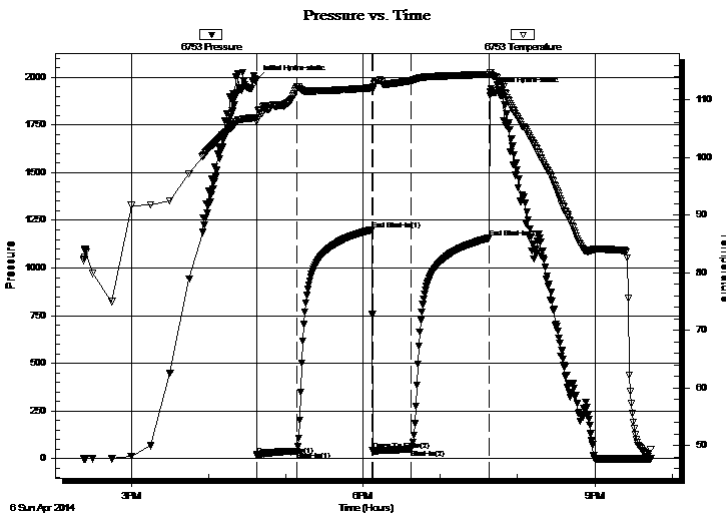
TEST COMMENT: 30 - IF - Surface blow built to 1"

60 - ISI - No Return

30 - FF - No Surface blow

60 - FSI - No Return

## PRESSURE SUMMARY



Time (Min.)	Pressure (psig)	Temp (deg F)	Annotation
0	1989.61	106.90	Initial Hydro-static
1	17.71	106.24	Open To Flow (1)
32	37.57	112.18	Shut-In(1)
90	1200.85	112.07	End Shut-In(1)
91	41.34	111.71	Open To Flow (2)
120	50.91	113.33	Shut-In(2)
181	1157.46	114.39	End Shut-In(2)
182	1925.25	114.63	Final Hydro-static

## Recovery

Length (ft)	Description	Volume (bbl)
64.00		0.31

## Gas Rates

	Choke (inches)	Pressure (psig)	Gas Rate (Mcf/d)





**TRILOBITE  
TESTING, INC**

# DRILL STEM TEST REPORT

**TOOL DIAGRAM**

Murfin Drilling Co., Inc.

**23-4S-31W Rawlins,KS**

250 N. Water Ste 300  
Wichita KS 67202

**Most #1-23**

Job Ticket: 55206

**DST#: 2**

ATTN: Saman ShariFaie

Test Start: 2014.04.06 @ 14:23:00

## Tool Information

Drill Pipe:	Length: 3751.66 ft	Diameter: 3.80 inches	Volume: 52.63 bbl	Tool Weight: 2500.00 lb
Heavy Wt. Pipe:	Length: 0.00 ft	Diameter: 0.00 inches	Volume: 0.00 bbl	Weight set on Packer: 25000.00 lb
Drill Collar:	Length: 207.34 ft	Diameter: 2.25 inches	Volume: 1.02 bbl	Weight to Pull Loose: 70000.00 lb
			<u>Total Volume: 53.65 bbl</u>	Tool Chased 0.00 ft
Drill Pipe Above KB:	30.00 ft			String Weight: Initial 66000.00 lb
Depth to Top Packer:	3956.00 ft			Final 66000.00 lb
Depth to Bottom Packer:	ft			
Interval between Packers:	54.00 ft			
Tool Length:	81.00 ft			
Number of Packers:	2	Diameter: 6.75 inches		

Tool Comments:

Tool Description	Length (ft)	Serial No.	Position	Depth (ft)	Accum. Lengths
------------------	-------------	------------	----------	------------	----------------

Shut In Tool	5.00			3934.00	
Hydraulic tool	5.00			3939.00	
Jars	5.00			3944.00	
Safety Joint	3.00			3947.00	
Packer	4.00			3951.00	27.00 Bottom Of Top Packer
Packer	5.00			3956.00	
Stubb	1.00			3957.00	
Recorder	0.00	8368	Inside	3957.00	
Recorder	0.00	6753	Inside	3957.00	
Perforations	16.00			3973.00	
Change Over Sub	1.00			3974.00	
Drill Pipe	31.00			4005.00	
Change Over Sub	1.00			4006.00	
Bullnose	4.00			4010.00	54.00 Bottom Packers & Anchor

**Total Tool Length: 81.00**



**TRILOBITE  
TESTING, INC**

# DRILL STEM TEST REPORT

## FLUID SUMMARY

Murfin Drilling Co., Inc.

**23-4S-31W Rawlins,KS**

250 N. Water Ste 300  
Wichita KS 67202

**Most #1-23**

Job Ticket: 55206

**DST#: 2**

ATTN: Saman ShariFaie

Test Start: 2014.04.06 @ 14:23:00

### Mud and Cushion Information

Mud Type: Gel Chem

Cushion Type:

Oil API:

deg API

Mud Weight: 9.00 lb/gal

Cushion Length:

ft

Water Salinity:

ppm

Viscosity: 57.00 sec/qt

Cushion Volume:

bbbl

Water Loss: 6.79 in<sup>3</sup>

Gas Cushion Type:

Resistivity: 0.00 ohm.m

Gas Cushion Pressure:

psig

Salinity: 1500.00 ppm

Filter Cake: 2.00 inches

### Recovery Information

Recovery Table

Length ft	Description	Volume bbl
64.00		0.315

Total Length: 64.00 ft      Total Volume: 0.315 bbl

Num Fluid Samples: 0

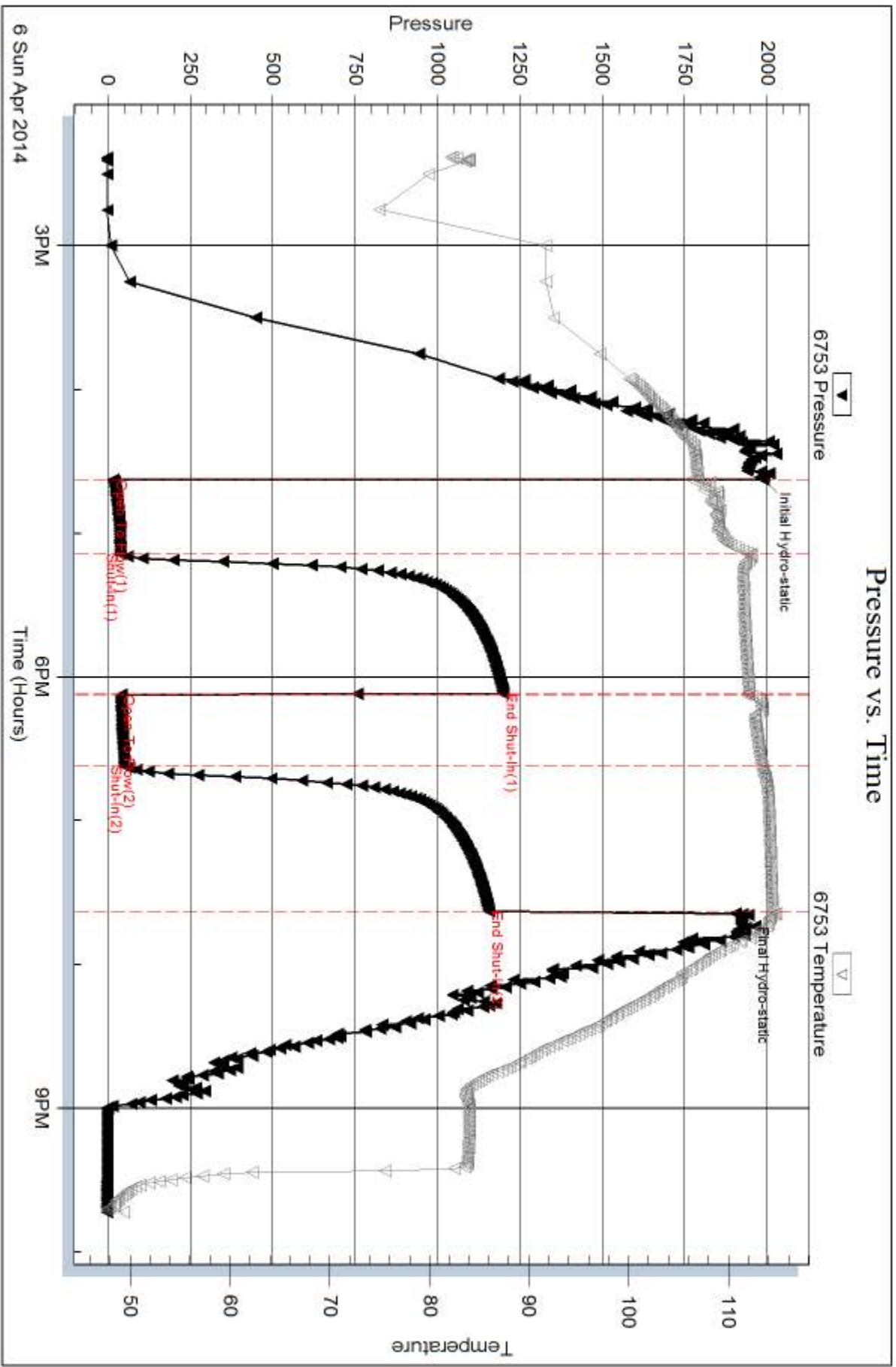
Num Gas Bombs: 0

Serial #:

Laboratory Name:

Laboratory Location:

Recovery Comments:



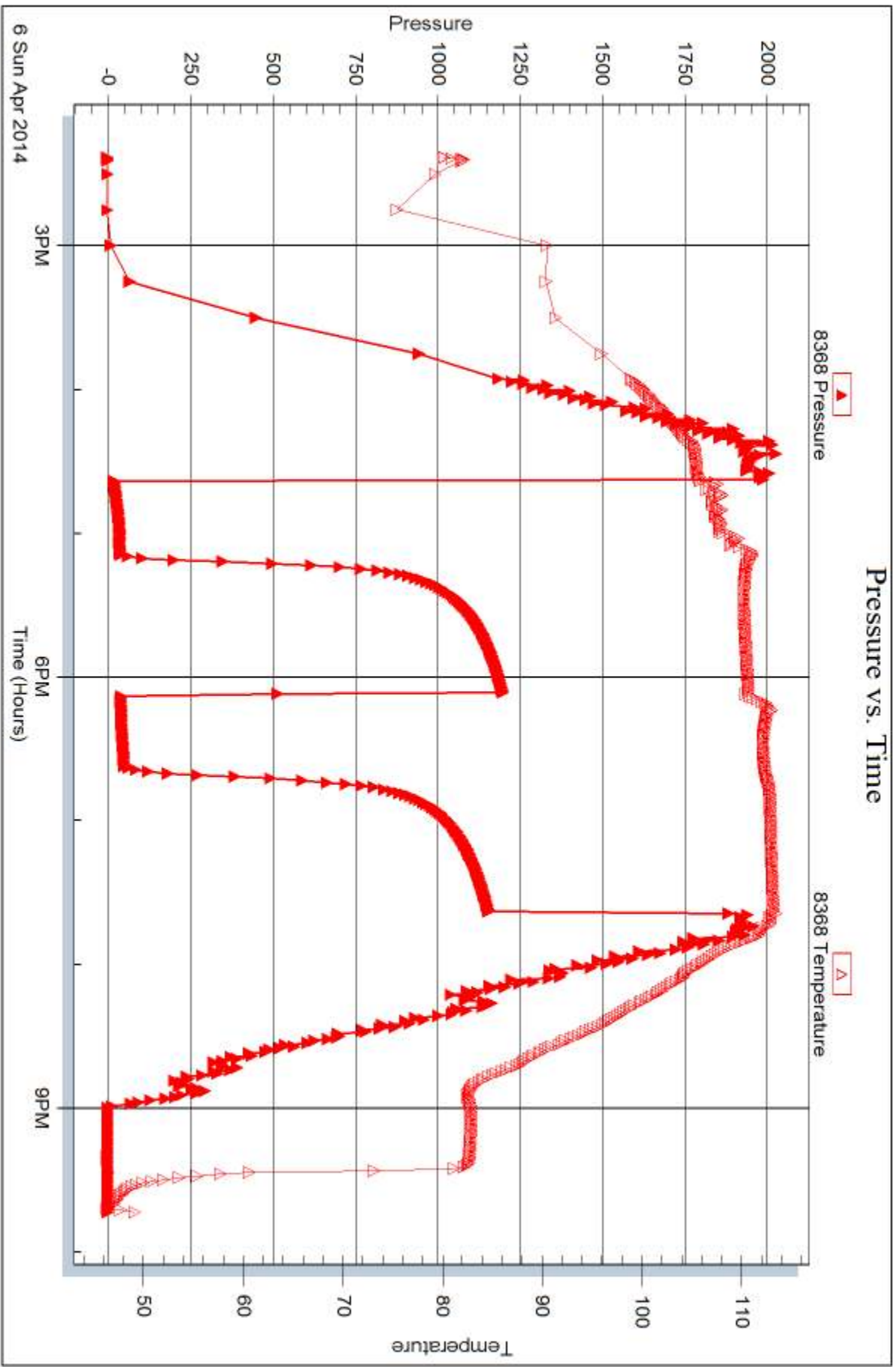
Serial #: 8368

Inside

Murfin Drilling Co., Inc.

Most #1-23

DST Test Number: 2





## DRILL STEM TEST REPORT

Prepared For: **Murfin Drilling Co., Inc.**

250 N. Water Ste 300  
Wichita KS 67202

ATTN: Saman ShariFaie

**Most #1-23**

**23-4S-31W Rawlins,KS**

Start Date: 2014.04.07 @ 08:25:00

End Date: 2014.04.07 @ 16:52:00

Job Ticket #: 55984                      DST #: 3

Trilobite Testing, Inc  
PO Box 362 Hays, KS 67601  
ph: 785-625-4778 fax: 785-625-5620

Printed: 2014.04.10 @ 09:20:44



**TRILOBITE TESTING, INC.**

# DRILL STEM TEST REPORT

Murfin Drilling Co., Inc.

**23-4S-31W Rawlins,KS**

250 N. Water Ste 300  
Wichita KS 67202

**Most #1-23**

Job Ticket: 55984

**DST#: 3**

ATTN: Saman ShariFaie

Test Start: 2014.04.07 @ 08:25:00

## GENERAL INFORMATION:

Formation: **LKC "H-J"**

Deviated: No Whipstock: ft (KB)

Time Tool Opened: 10:15:45

Time Test Ended: 16:52:00

Test Type: Conventional Bottom Hole (Initial)

Tester: Robert Zodrow

Unit No: 54

**Interval: 4023.00 ft (KB) To 4090.00 ft (KB) (TVD)**

Reference Elevations: 2879.00 ft (KB)

Total Depth: 4090.00 ft (KB) (TVD)

2868.00 ft (CF)

Hole Diameter: 7.88 inches Hole Condition: Fair

KB to GR/CF: 11.00 ft

**Serial #: 6753**

**Inside**

Press@RunDepth: 722.28 psig @ 4024.00 ft (KB)

Capacity: 8000.00 psig

Start Date: 2014.04.07

End Date:

2014.04.07

Last Calib.:

2014.04.07

Start Time: 08:25:05

End Time:

16:51:59

Time On Btm:

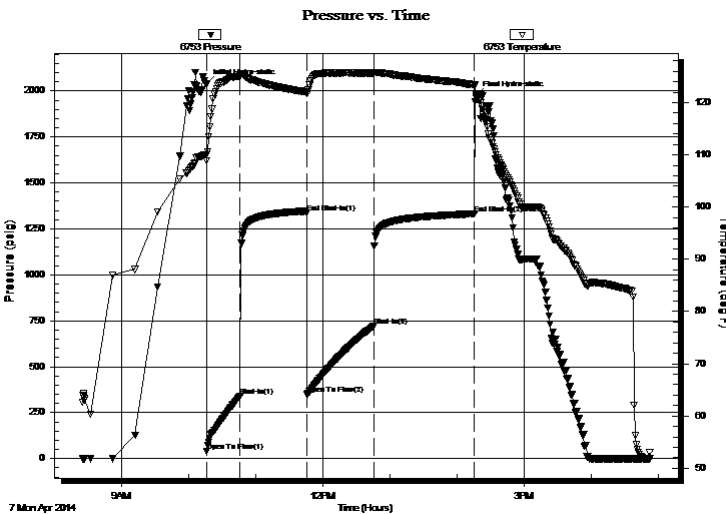
2014.04.07 @ 10:15:30

Time Off Btm:

2014.04.07 @ 14:17:00

**TEST COMMENT:** 30-IF- Bob In 5 Mins  
60-ISI- Return Built To Weak Surface Blow  
60-FF- Bob In 5 Mins  
90-FSI- No Return

## PRESSURE SUMMARY



Time (Min.)	Pressure (psig)	Temp (deg F)	Annotation
0	2038.67	110.03	Initial Hydro-static
1	39.30	108.91	Open To Flow (1)
31	341.17	125.10	Shut-In(1)
90	1338.67	122.02	End Shut-In(1)
91	348.45	121.81	Open To Flow (2)
150	722.28	125.63	Shut-In(2)
240	1331.95	123.49	End Shut-In(2)
242	1974.98	120.88	Final Hydro-static

## Recovery

Length (ft)	Description	Volume (bbl)
1507.00	msw 17%m 83%sw	20.03

## Gas Rates

	Choke (inches)	Pressure (psig)	Gas Rate (Mcf/d)







**TRILOBITE  
TESTING, INC**

# DRILL STEM TEST REPORT

**TOOL DIAGRAM**

Murfin Drilling Co., Inc.

**23-4S-31W Rawlins,KS**

250 N. Water Ste 300  
Wichita KS 67202

**Most #1-23**

Job Ticket: 55984

**DST#: 3**

ATTN: Saman ShariFaie

Test Start: 2014.04.07 @ 08:25:00

## Tool Information

Drill Pipe:	Length: 3816.00 ft	Diameter: 3.88 inches	Volume: 55.81 bbl	Tool Weight: 2500.00 lb
Heavy Wt. Pipe:	Length: 0.00 ft	Diameter: 0.00 inches	Volume: 0.00 bbl	Weight set on Packer: 25000.00 lb
Drill Collar:	Length: 207.00 ft	Diameter: 2.25 inches	Volume: 1.02 bbl	Weight to Pull Loose: 78000.00 lb
			<u>Total Volume: 56.83 bbl</u>	Tool Chased ft
Drill Pipe Above KB:	27.00 ft			String Weight: Initial 62000.00 lb
Depth to Top Packer:	4023.00 ft			Final 70000.00 lb
Depth to Bottom Packer:	ft			
Interval between Packers:	67.00 ft			
Tool Length:	94.00 ft			
Number of Packers:	2	Diameter: 6.75 inches		

Tool Comments:

Tool Description	Length (ft)	Serial No.	Position	Depth (ft)	Accum. Lengths
------------------	-------------	------------	----------	------------	----------------

Shut In Tool	5.00			4001.00	
Hydraulic tool	5.00			4006.00	
Jars	5.00			4011.00	
Safety Joint	3.00			4014.00	
Packer	4.00			4018.00	27.00 Bottom Of Top Packer
Packer	5.00			4023.00	
Stubb	1.00			4024.00	
Recorder	0.00	8368	Inside	4024.00	
Recorder	0.00	6753	Inside	4024.00	
Perforations	29.00			4053.00	
Change Over Sub	1.00			4054.00	
Drill Pipe	31.00			4085.00	
Change Over Sub	1.00			4086.00	
Bullnose	4.00			4090.00	67.00 Bottom Packers & Anchor

**Total Tool Length: 94.00**



**TRILOBITE  
TESTING, INC**

# DRILL STEM TEST REPORT

**FLUID SUMMARY**

Murfin Drilling Co., Inc.

**23-4S-31W Rawlins,KS**

250 N. Water Ste 300  
Wichita KS 67202

**Most #1-23**

Job Ticket: 55984

**DST#: 3**

ATTN: Saman ShariFaie

Test Start: 2014.04.07 @ 08:25:00

## Mud and Cushion Information

Mud Type: Gel Chem

Cushion Type:

Oil API:

deg API

Mud Weight: 9.00 lb/gal

Cushion Length:

ft

Water Salinity:

100000 ppm

Viscosity: 57.00 sec/qt

Cushion Volume:

bbl

Water Loss: 6.79 in<sup>3</sup>

Gas Cushion Type:

Resistivity: ohm.m

Gas Cushion Pressure:

psig

Salinity: 1500.00 ppm

Filter Cake: 2.00 inches

## Recovery Information

Recovery Table

Length ft	Description	Volume bbl
1507.00	msw 17%m 83%sw	20.029

Total Length: 1507.00 ft      Total Volume: 20.029 bbl

Num Fluid Samples: 0

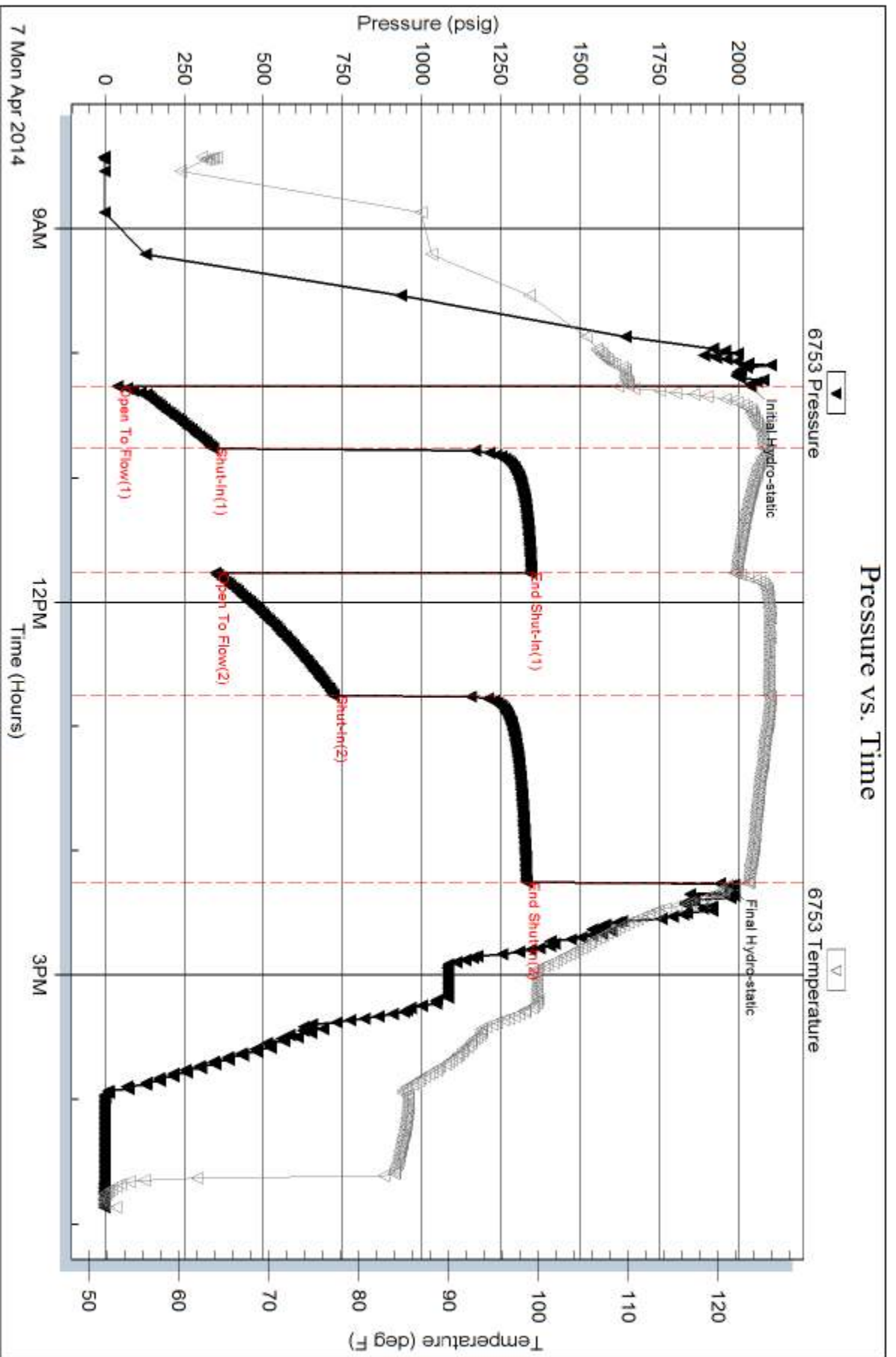
Num Gas Bombs: 0

Serial #:

Laboratory Name:

Laboratory Location:

Recovery Comments: .117@56deg F =100000



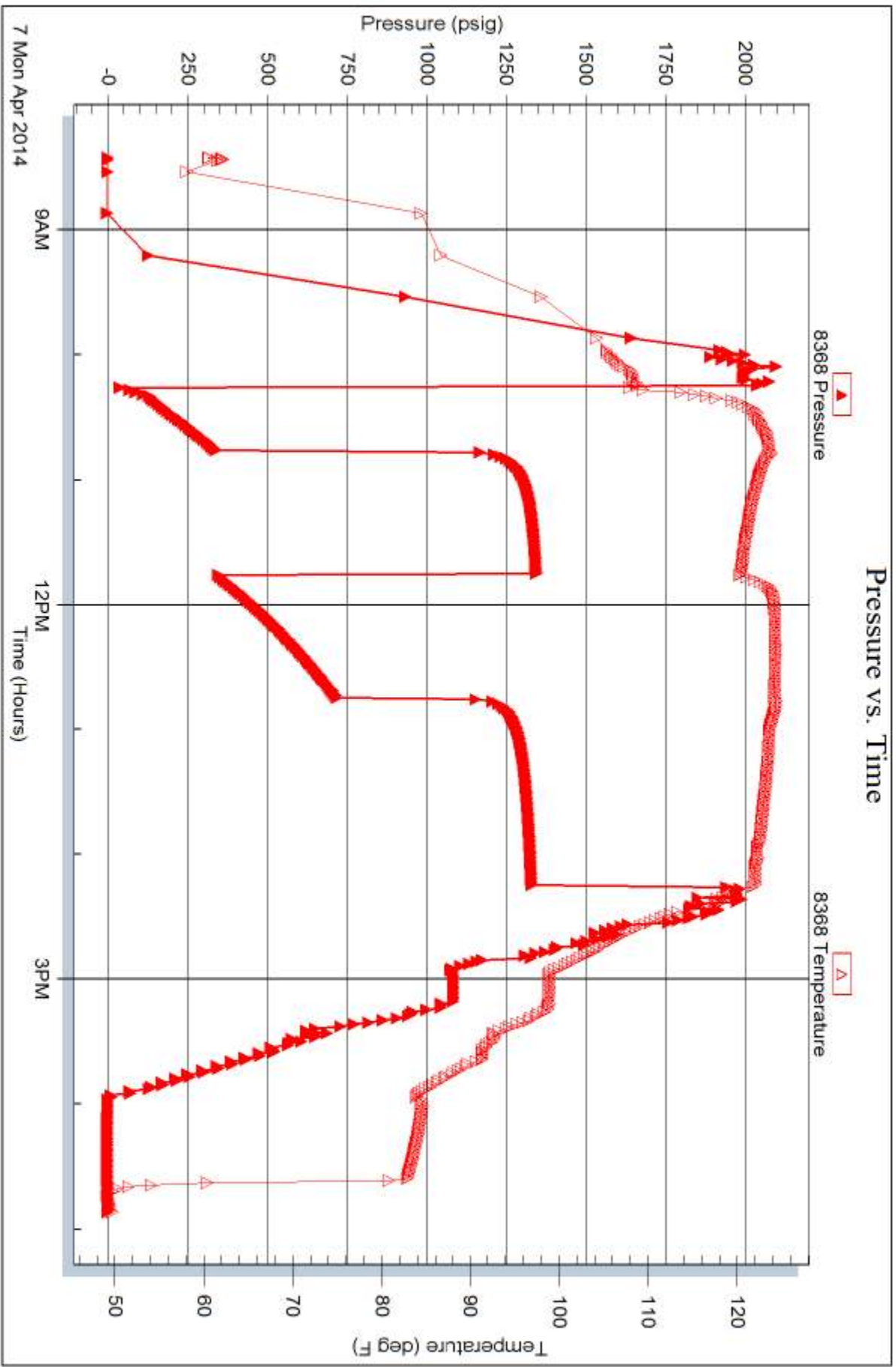
Serial #: 8368

Inside

Murfin Drilling Co., Inc.

Most #1-23

DST Test Number: 3



Trilobite Testing, Inc

Ref. No: 55984

Printed: 2014.04.10 @ 09:20:46



# TRILOBITE TESTING INC.

1515 Commerce Parkway • Hays, Kansas 67601

## Test Ticket

NO. **55205**

Well Name & No. Most #1-23 Test No. 1 Date 4-5-14  
 Company Murfin Drilling Co., Inc. Elevation 2879 KB 2868 GL  
 Address 250 N. Water Ste 300, Wichita KS 67202  
 Co. Rep / Geo. Saman Sharifaie Rig Murfin #2  
 Location: Sec. 23 Twp. 4S Rge. 31W Co. Rawlins State KS

Interval Tested 3876 - 3956 Zone Tested Top, LKC A-B  
 Anchor Length 80' Drill Pipe Run 3661.03' Mud Wt. 9.0  
 Top Packer Depth 3871 Drill Collars Run 207.34' Vis 53  
 Bottom Packer Depth 3876 Wt. Pipe Run 0 WL 6.0  
 Total Depth 3956 Chlorides 1500 ppm System LCM 6#  
 Blow Description IF-Surface blow built to 3 3/4"  
ISI-No Return  
FF-Surface blow started 5mins. into and built to 2 1/4"  
FSI-No Return

Rec	Feet of	%gas	%oil	%water	%mud
<u>278'</u>	<u>WM</u>		<u>40</u>	<u>60</u>	
Rec	Feet of	%gas	%oil	%water	%mud
Rec	Feet of	%gas	%oil	%water	%mud
Rec	Feet of	%gas	%oil	%water	%mud
Rec	Feet of	%gas	%oil	%water	%mud

Rec Total 278 BHT 114°F Gravity \_\_\_\_\_ API RW 356 @ 43 °F Chlorides 32,000 ppm  
 (A) Initial Hydrostatic 1909  Test 1150 T-On Location 6:30pm  
 (B) First Initial Flow 22  Jars 250 T-Started 8:34pm  
 (C) First Final Flow 93  Safety Joint 75 T-Open 10:48pm  
 (D) Initial Shut-In 128  Circ Sub N/C T-Pulled 2:48am  
 (E) Second Initial Flow 98  Hourly Standby \_\_\_\_\_ T-Out 4:57am  
 (F) Second Final Flow 147  Mileage 50 RT 77.50 Comments \_\_\_\_\_  
 (G) Final Shut-In 1188  Sampler \_\_\_\_\_  
 (H) Final Hydrostatic 1862  Straddle \_\_\_\_\_  
 Shale Packer \_\_\_\_\_  
 Extra Packer \_\_\_\_\_  
 Extra Recorder \_\_\_\_\_  
 Day Standby \_\_\_\_\_  
 Accessibility \_\_\_\_\_  
 Sub Total 1552.50

Approved By \_\_\_\_\_ Our Representative [Signature]

Trilobite Testing Inc. shall not be liable for damaged of any kind of the property or personnel of the one for whom a test is made, or for any loss suffered or sustained, directly or indirectly, through the use of its equipment, or its statements or opinion concerning the results of any test, tools lost or damaged in the hole shall be paid for at cost by the party for whom the test is made.





# TRILOBITE TESTING INC.

1515 Commerce Parkway • Hays, Kansas 67601

## Test Ticket

NO. 55206

Well Name & No. Most #1-23 Test No. 2 Date 4-6-14  
 Company Murfin Drilling Co., Inc. Elevation 2879 KB 2868 GL  
 Address 250 N. Water Ste 300, Wichita KS 67202  
 Co. Rep / Geo. Saman Shari Faie Rig Murfin #2  
 Location: Sec. 23 Twp. 4S Rge. 31W Co. Rawlins State KS

Interval Tested 3956 - 4010 Zone Tested LKC - D, F, G,  
 Anchor Length 54' Drill Pipe Run 3751.66' Mud Wt. 9.1  
 Top Packer Depth 3951 Drill Collars Run 207.34' Vis 57  
 Bottom Packer Depth 3956 Wt. Pipe Run 0 WL 6.8  
 Total Depth 4010 Chlorides 1500 ppm System LCM 6#

Blow Description TF-Surface blow built to 1"  
ISI-No Return  
FF-No Surface Blow  
FSI-No Return

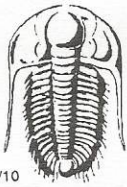
Rec	Feet of	%gas	%oil	%water	%mud
<u>64'</u>	<u>OSWm</u>	<u>spots</u>	<u>35</u>	<u>65</u>	
Rec	Feet of	%gas	%oil	%water	%mud
Rec	Feet of	%gas	%oil	%water	%mud
Rec	Feet of	%gas	%oil	%water	%mud
Rec	Feet of	%gas	%oil	%water	%mud

Rec Total 64' BHT 114°F Gravity \_\_\_\_\_ API RW 228 @ 51 °F Chlorides 48,000 ppm

(A) Initial Hydrostatic 1989  Test 1250 T-On Location 1:45pm  
 (B) First Initial Flow 17  Jars 250 T-Started 2:23pm  
 (C) First Final Flow 37  Safety Joint 75 T-Open 4:37pm  
 (D) Initial Shut-In 1200  Circ Sub n/c T-Pulled 7:37pm  
 (E) Second Initial Flow 41  Hourly Standby \_\_\_\_\_ T-Out 9:43  
 (F) Second Final Flow 50  Mileage 50 R/T 77.50 Comments \_\_\_\_\_  
 (G) Final Shut-In 1157  Sampler \_\_\_\_\_  
 (H) Final Hydrostatic 1925  Straddle \_\_\_\_\_  Ruined Shale Packer \_\_\_\_\_  
 Shale Packer \_\_\_\_\_  Ruined Packer \_\_\_\_\_  
 Extra Packer \_\_\_\_\_  Extra Copies \_\_\_\_\_  
 Initial Open 30  Extra Recorder \_\_\_\_\_ Sub Total 0  
 Initial Shut-In 60  Day Standby \_\_\_\_\_ Total 1552.50  
 Final Flow 30  Accessibility \_\_\_\_\_ MP/DST Disc't \_\_\_\_\_  
 Final Shut-In 60 Sub Total 1552.50

Approved By \_\_\_\_\_ Our Representative [Signature]  
 Trilobite Testing Inc. shall not be liable for damaged of any kind of the property or personnel of the one for whom a test is made, or for any loss suffered or sustained, directly or indirectly, through the use of its equipment, or its statements or opinion concerning the results of any test, tools lost or damaged in the hole shall be paid for at cost by the party for whom the test is made.





# TRILOBITE TESTING INC.

1515 Commerce Parkway • Hays, Kansas 67601

## Test Ticket

NO. 55984

Well Name & No. MOST # 1-23 Test No. 3 Date 4-7-2014  
 Company Murfin Drilling CO, Inc. Elevation 2879 KB 2868 GL  
 Address 250 N water STE. 300, Wichita KS. 67202  
 Co. Rep / Geo. Saman Sharifaie Rig Murfin #2  
 Location: Sec. 23 Twp. 45 Rge. 31W Co. Rawlins State KS

Interval Tested 4023 - 4090 Zone Tested LKC "H-J"  
 Anchor Length 67 Drill Pipe Run 3816 Mud Wt. 9.1  
 Top Packer Depth 4018 Drill Collars Run 207 Vis 57  
 Bottom Packer Depth 4023 Wt. Pipe Run 0 WL 6.8  
 Total Depth 4090 Chlorides 1,500 ppm System LCM 6.0  
 Blow Description IF - ~~Bob~~ Bob In 5 mins  
ISI - weak surface blow on Return  
FF - Bob In 5 mins  
FSI - NO Return

Rec	Feet of	%gas	%oil	%water	%mud
<u>1507</u>	<u>msw</u>		<u>83</u>	<u>17</u>	
Rec	Feet of	%gas	%oil	%water	%mud
Rec	Feet of	%gas	%oil	%water	%mud
Rec	Feet of	%gas	%oil	%water	%mud
Rec	Feet of	%gas	%oil	%water	%mud

Rec Total 1507 BHT 124 Gravity — API RW .117 @ 56 °F Chlorides 100,000 ppm

(A) Initial Hydrostatic <u>2039</u>	<input checked="" type="checkbox"/> Test <u>1250</u>	T-On Location <u>8:00 Am 4-7</u>
(B) First Initial Flow <u>39</u>	<input checked="" type="checkbox"/> Jars <u>250</u>	T-Started <u>8:25 Am 4-7</u>
(C) First Final Flow <u>341</u>	<input checked="" type="checkbox"/> Safety Joint <u>75</u>	T-Open <u>10:15 Am 4-7</u>
(D) Initial Shut-In <u>1339</u>	<input type="checkbox"/> Circ Sub	T-Pulled <u>2:15 pm 4-7</u>
(E) Second Initial Flow <u>348</u>	<input type="checkbox"/> Hourly Standby	T-Out <u>4:52 pm 4-7</u>
(F) Second Final Flow <u>722</u>	<input checked="" type="checkbox"/> Mileage <u>50 RT x2</u> 155	Comments <u>Loaded tool set</u>
(G) Final Shut-In <u>1332</u>	<input type="checkbox"/> Sampler	<u>12:00 pm on 4-9-2014</u>
(H) Final Hydrostatic <u>1975</u>	<input type="checkbox"/> Straddle	<input type="checkbox"/> Ruined Shale Packer
Initial Open <u>30</u>	<input type="checkbox"/> Shale Packer	<input type="checkbox"/> Ruined Packer
Initial Shut-In <u>60</u>	<input type="checkbox"/> Extra Packer	<input type="checkbox"/> Extra Copies
Final Flow <u>60</u>	<input type="checkbox"/> Extra Recorder	Sub Total <u>800</u>
Final Shut-In <u>90</u>	<input checked="" type="checkbox"/> Day Standby <u>1d 19.25h</u>	Total <u>2530</u>
	<input type="checkbox"/> Accessibility	MP/DST Disc't
	Sub Total <u>1730</u>	

Approved By [Signature] Our Representative Robert Zechow

Trilobite Testing Inc. shall not be liable for damaged of any kind of the property or personnel of the one for whom a test is made, or for any loss suffered or sustained, directly or indirectly, through the use of its equipment, or its statements or opinion concerning the results of any test, tools lost or damaged in the hole shall be paid for at cost by the party for whom the test is made.