

Thomas J. Funk
Petroleum Geologist

Geologists Report
Drilling Time and Sample Log

OPERATOR **Murfin Drilling Co., Inc**

LEASE **ALC LLC** WELL NO **#1-33**
FIELD **Widcat** API **15-109-21271**

LOCATION **2302 FNL & 2610 FWL**

SEC. **33** TWP. **12S** RGE. **33W**
COUNTY **Logan** STATE **Kansas**

CONTRACTOR **Murfin Dring Co** Reg #**22**
COMM **3/28/2014** COMP **4/4/2014**
RTD **4/815** LOG TD **4815**

SAMPLES SAVED FROM **3720'** TO **4815'**
DRILLING TIME KEPT FROM **3720'** TO **4815'**
SAMPLES EXAMINED FROM **3720'** TO **4815'**
GEOLOGICAL SUPERVISION FROM **4000'** TO **4815'**
MUD UP **3400'** TYPE MUD **Chemical**

PRODUCTION **N/A**
ELECTRICAL SURVEYS **Pioneer Energy Services**
DIL **MEL**
DUQP **BHCS**

FORMATION LOG SAMPLE
Anhydrite **2619 (+521)** **2620 (+520)**
Barite/Anhydrite **2642 (+498)** **2642 (+498)**
Tapeka Sh **3823 (-683)** **3822 (-682)**
Heebner Sh **4047 (-907)** **4046 (-906)**
Lansing **4092 (-952)** **4093 (-953)**
Maurice Creek **4237 (-1087)** **4324 (-1184)**
Start Sh **4324 (-1184)** **4324 (-1184)**
Marmaton **4427 (-1287)** **4426 (-1286)**
Pawnee **4525 (-1385)** **4522 (-1382)**
Cherokee Sh **4608 (-1468)** **4608 (-1468)**
Johnson Zone **4649 (-1509)** **4649 (-1509)**
Mississippian **4727 (-1587)** **4726 (-1586)**

ELEVATION **KB 3140'**
DF
GL 3129'
Measurements Are All From **KB**

CASING RECORD **SURFACE**
8 5/8" at 225' KB w/185SX

NO. Stret. Make Type Origin Out Feet Hours
3/29/14 735 1 12 1/4 HTC GTC1 226 226 3
3/30/14 2970 2 7 7/8 HTC DP506F 4000 3774 47
3/31/14 4000 3 7 7/8 HTC GX20c 4815 815 51
4/1/14 4280
4/2/14 4590
4/3/14 4670
4/3/14 4815 TD Logging
4/4/14

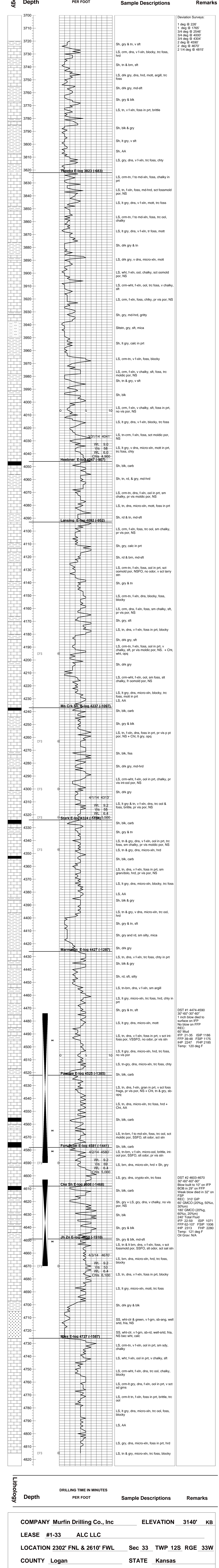
Daily Progress
Date Depth
3/29/14 Spud
3/30/14 2970
3/31/14 4000
4/1/14 4280
4/2/14 4590
4/3/14 4670
4/3/14 4815 TD Logging
4/4/14

Remarks And Recommendations:
Based upon log analysis, DST recovery, and sample examination, it was decided to plug and abandon the #1-33 ALC LLC.
Thomas Funk
Petroleum Geologist

33

LEGEND

Anhydrite Salt Sandstone Shale Carb Shale Limestone Ool Limestone Chert Dolomite



COMPANY Murfin Drilling Co., Inc **ELEVATION** 3140' **KB**
LEASE #1-33 **ALC LLC**
LOCATION 2302' FNL & 2610' FWL **Sec 33 TWP 12S RGE 33W**
COUNTY Logan **STATE** Kansas