



# VINCENT OIL CORPORATION



Scale 1:240 Imperial

Well Name:	Droste #1-10	
Surface Location:	SW NE SE NE 10-28S-23W	
Bottom Location:		
API:	15-057-20923	
License Number:		
Spud Date:	1/27/2014	Time: 2:00 PM
Region:	Ford County	
Drilling Completed:	2/13/2014	Time: 4:45 PM
Surface Coordinates:	1782 FNL & 460 FEL	
Bottom Hole Coordinates:		
Ground Elevation:	2452.00ft	
K.B. Elevation:	2463.00ft	
Logged Interval:	4100.00ft	To: 5648.00ft
Total Depth:	5550.00ft	
Formation:	MISS	
Drilling Fluid Type:		

### OPERATOR

Company:	Vincent Oil Corp	
Address:	155 N Market Ste 700	
	Wichita, KS 67202	
Contact Geologist:	Dick Jordan	
Contact Phone Nbr:	316-262-3573	
Well Name:	Droste #1-10	
Location:	SW NE SE NE 10-28S-23W	API: 15-057-20923
Pool:		Field: Wildcat
State:	KS	Country: USA

### CONTRACTOR

Contractor:	Val Energy, Inc.	
Rig #:	5	
Rig Type:	Rotary	
Spud Date:	1/27/2014	Time: 2:00 PM
TD Date:	2/13/2014	Time: 4:45 PM
Rig Release:		Time:

SURFACE COORDINATES

**SURFACE CO-ORDINATES**

Well Type: Vertical  
 Longitude: -99.8104984 Latitude: 37.6263770  
 N/S Co-ord: 1782 FNL  
 E/W Co-ord: 460 FEL

**ELEVATIONS**

K.B. Elevation: 2463.00ft Ground Elevation: 2452.00ft  
 K.B. to Ground: 11.00ft

**TOTAL DEPTH**

Measurement Type: Measurement Depth: TVD:  
 0.00 0.00

**CASING SUMMARY**

	Surface	Intermediate	Main		
Bit Size	12.25 in	7.88 in			
Hole Size					
	Size	Set At	Type	# of Joints	Drilled Out At
Surf Casing	8.625 in	618 ft	23#	15	
Int Casing					
Prod Casing	5.5 in				

**CASING SEQUENCE**

Type	Hole Size	Casing Size	At
	0.00 in	0.00	0.00 ft

**OPEN HOLE LOGS**

Logging Company: Nabors  
 Logging Engineer: Jeff Luebbers  
 Truck #:  
 Logging Date: 2/12/2014 Time Spent: 6  
 # Logs Run: 4 # Logs Run Successful: 4

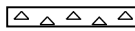









**LOGS RUN**

Tool	Logged Interval	Logged Interval	Hours	Remarks	Run #
DI	0.00ft	5550.00ft	2.00		1
CNDE/PE	4200.00ft	5550.00ft	2.00		1
MICRO	4200.00ft	5550.00ft	4.00		2
SONIC	0.00ft	5550.00ft	4.00		2

**LOGGING OPERATION SUMMARY**

Date	From	To	Description Of Operation
2/3/2014	0.00ft	0.00ft	

**ROCK TYPES**

 Cht	 Lmst fw<7	 Shgy	 Slst
 Coal	 Lmst fw>7	 Shblk	
 Dolsec	 Ss	 Shcol	

**ACCESSORIES**

**MINERAL**

- ⊥ Calcareous
- ▲ Chert, dark
- ∟ Dolomitic
- ∩ Glauconite
- Heavy, dark minerals
- P Pyrite
- Sandy
- Silty
- △ Chert White

**FOSSIL**

- ◇ Brachiopod
- Crinoids
- ♡ Echinoid
- ⊕ Foraminifera
- F Fossils < 20%
- ⊙ Oolite

**STRINGER**

-  Dolomite
-  Limestone
-  Sandstone
-  Shale

**TEXTURE**

- C Chalky
- e Earthy

**MISC**

- ▨ Veins

**OTHER SYMBOLS**

OTHER SYMBOLS

**POROSITY TYPE**

- x Intercrystalline
- φ Interoolitic
- V Vuggy
- P Pinpoint
- ∩ Moldic
- O Organic
- F Fracture
- e Earthy
- ☐ Fenestral

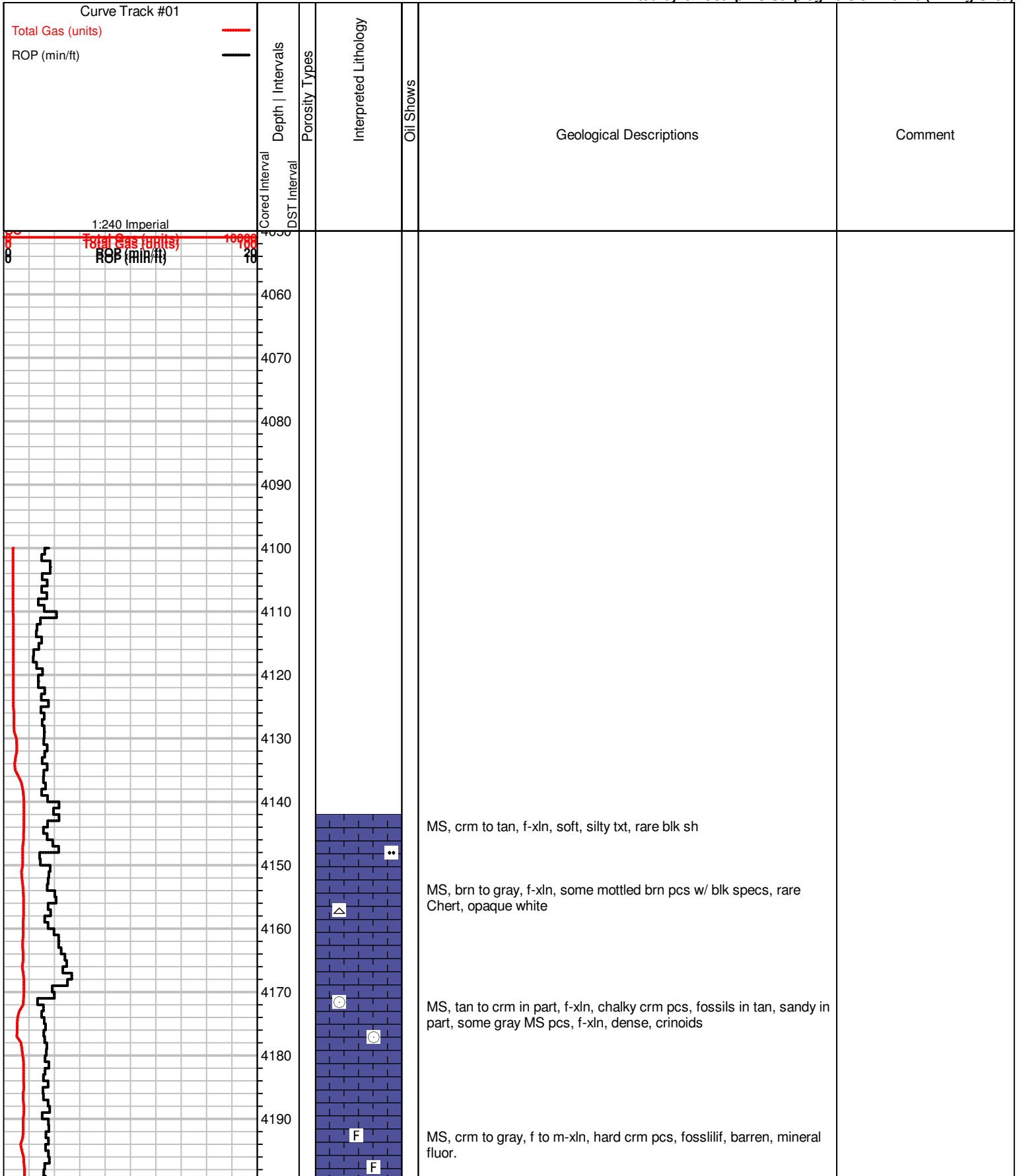
**OIL SHOWS**

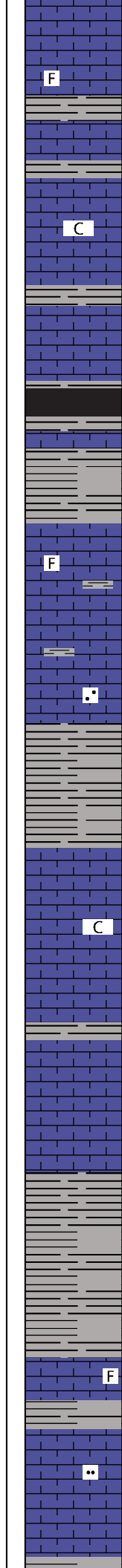
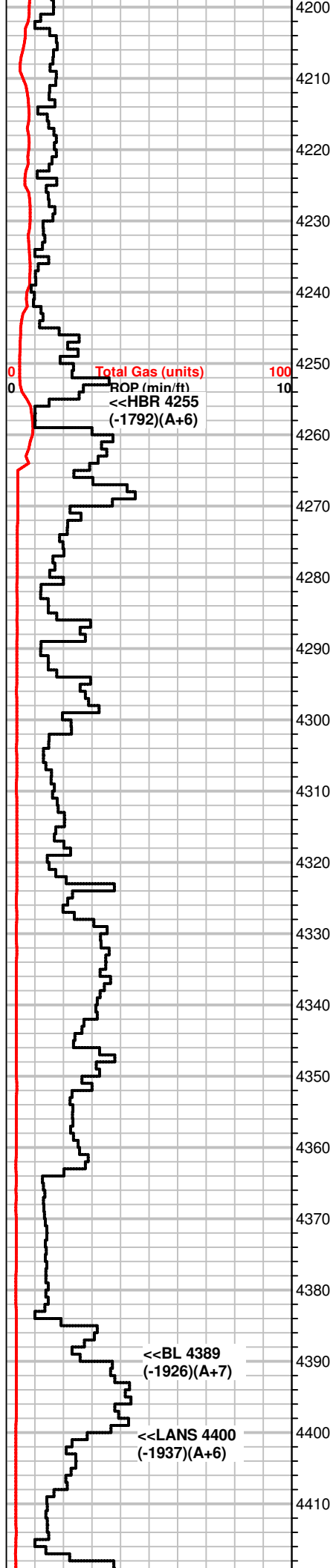
- Even Stn
- Spotted Stn 50 - 75 %
- Spotted Stn 25 - 50 %
- Spotted Stn 1 - 25 %
- Questionable Stn
- D Dead Oil Stn
- Fluorescence

**INTERVALS**

- Core
- DST

Printed by GEOstrip VC Striplog version 4.0.7.0 (www.grsi.ca)





4200

4210 **F** MS, crm to gray, very chalky, firm, some fossils, some SH, blk, gray,

4220

4230 **C** MS, crm, f-xln, f-oolitic pcs, chalky txt on most pcs,

4240 SH, dark gray, gray

4250 Sh, blk, carb. some gray shales

4260 MS, crm to tan, hard, f-xln, oolitic in part, some lt. gray, rare mottled pcs.

4270

4280 **F** MS- rare WS, crm to gray, mottled, fossilif in part, firm some fractures  
SH, dk gray, some blk pcs.

4290

4300 **\*** MS, crm to gray, f-xln, dense, sli. micro oolitic/sandy txt, rare blk specs in gray pcs, fossils,

4310 SH, dk gray

4320

4330 **C** MS, crm, f-xln, firm, partially chalky, some gray A.A. some SH, gray

4340 MS, A.A., some SH gray, poor sample

4350 MS, crm to lt. tan, f-xln, dense, dull fluor

4360

4370 Sh, blk, dk gray, gray

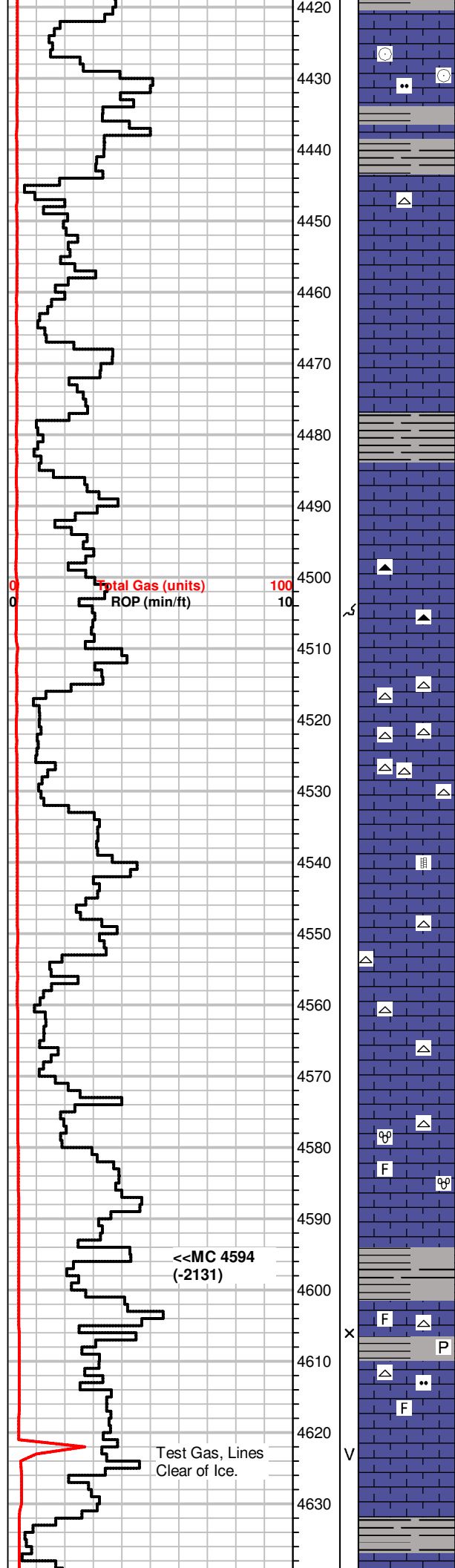
4380

4390 **F** MS, crm to brn, mic-f-xln, dense, some fratures, rare fossils

4400 **\*\*** MS, crm, f-xln, sli silty pcs, predom. dense, dull fluor

4410 MS, A.A, rare moldic pcs

Sh. gray



MS, crm, f-xln, A.A, inc in gray MS, oolitic/moldic, dull fluor, some lt. brn silty pcs, fossilif in part.

SH, gray, dk gray

MS, crm f-xln, A.A, rare Chert, gray/tan

MS, Crm to lt. tan, f-gr. oolitic, f-xln pcs,

MS, brn to crm, f-xln, dense, firm to hard, dull fluor  
Some SH, dk. gray to green

SH, gray, dk gray, some green

MS, brn to crm, f-xln, dense, firm, NS

MS, crm to brn, firm to hard, f-xln, some fossils, rare oomoldic brn pc, Chert, brn,  
Some SH, gray, green,

MS, crm chalky, lt. gray, sub oolitic to fossilif pcs, hard, dense  
Chert, white, gray

Ms, crm to tan, mic to f-xln, dense, hard, barren, calcite veins  
Chert, white  
SH, blk, gray

MS, crm, A.A., inc in tan to brn pcs,  
Chert, white

MS, crm, earthy to crip-xln, sub oolitic pcs, fusulinids.

Sh, gray, rare blk

MS, crm to tan, f to m-xln, sub oolitic in part, some silty pcs, Pyrite, fossilif, Chert, white, rare light edge stn in dry, no fluor

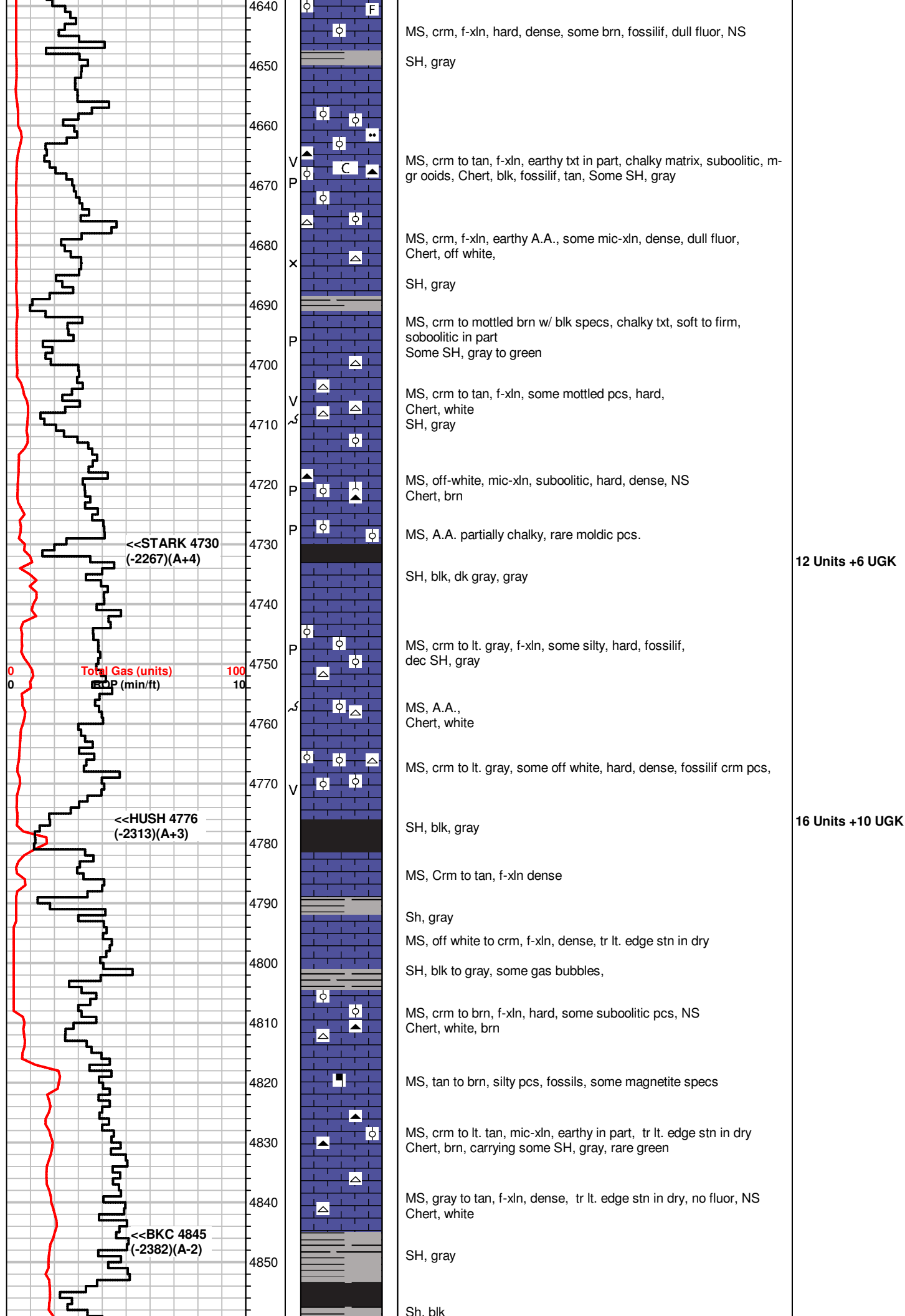
MS, crm, mic-xln, dense, hard, no vis por.

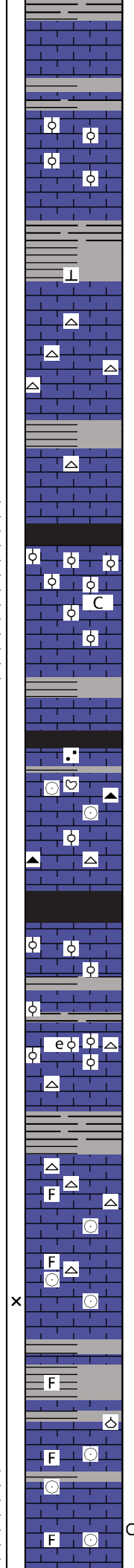
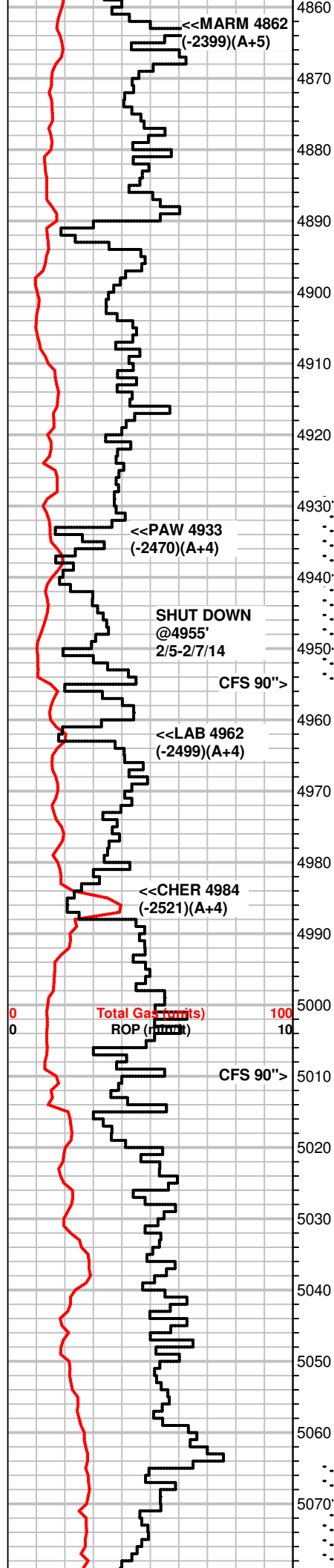
SH, blk, gray

Total Gas (units)  
ROP (min/ft)

<<MC 4594  
(-2131)

Test Gas, Lines  
Clear of Ice.





MS, crm to off white, f-xln, hard, NS

MS/WS, crm to off white, micro oolitic pcs, fossilif in part, hard, NS  
Some SH, gray

MS, crm, A.A.

SH, dk gray, gray, green

MS, crm to off white, some lt. gray, f-xln, dense, oolitic white pcs, m-gr ooids, Chert, white

MS, crm to tan, m-xln, dense, hard, NS  
SH, gray

SH, gray, green, rare blk

MS, crm to off white, f-xln, firm to hard, chalky txt, some pcs suboolitic to oolitic w/ muddy matrix, sparse fossils, dull mineral fluor, faint to fair odor in bag. No cut, no free oil.

MS, crm to tan, f-xln, hard, most dense, NS

SH, gray, green, some green w/ gray to dk gray striations

MS, crm to tan, f-xln, dense, some chalky firm pcs, mostly crm, fossils sparse, some pcs w/ sandy txt. dull fluor, no cut, NS

MS, crm to gray, some tan, f-xln, firm to hard, fossilif in part, Chert, gray-translucent, brn

SH, blk, dk, gray, carbonaceous

MS-WS, crm to gray, f-xln, hard, dense, fossilif, suboolitic, fn to m-gr ooids, dull flour, NS

Some SH, dk, gray to blk, carb.

MS, gray to crm, vf-xln to earthy txt, rare oolitic pcs, some glauc specs, some brown specs, rare Chert, white

MS, crm to tan, f-xln, dense, partially oolitic, fossils

SH, blk, dk, gray,  
MS, crm to gray, some brn, f-xln, dense, dull fluor, NS  
Chert, white, some fossils

MS, crm to tan, f-xln to earthy, fossils in some pcs, barren, dense, NS

MS, brn to tan, crm, f-xln, dense, fossil fragments, crinoid stems, mostly barren of por.  
some SH, green

SH, gray, green

MS, brn, vf-xln to mic-xln, dense, NS

MS, crm to brn, f-xln, dense, rare fossilif, barren

MS, crm to gray, f-xln, dense, suboolitic gray pcs, some fossils, 2 pcs spotty strn, milky to fast streaming cut, bright fluor where stained

DST #1 4928-4955  
30-60-30-60  
GB 1/2" to 10"  
NBB  
FB surf to 6"  
NBB  
REC 420' MCW  
(90w 10m)  
IH 2375#  
IF 25-135#  
ISIP 1544#  
FF 138-216#  
FSIP 1540#  
FH 2350#  
Rw .3 @ 29°F  
CI 61000

Rig Shut down @  
4955', 10PM 2/5/14 due to  
weather  
Rig Tripping IN Hole to  
Circ and Cond. Hole @  
630 AM 2/7/14

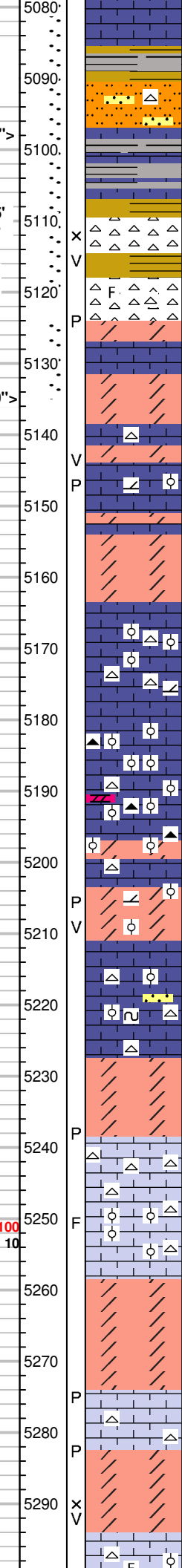
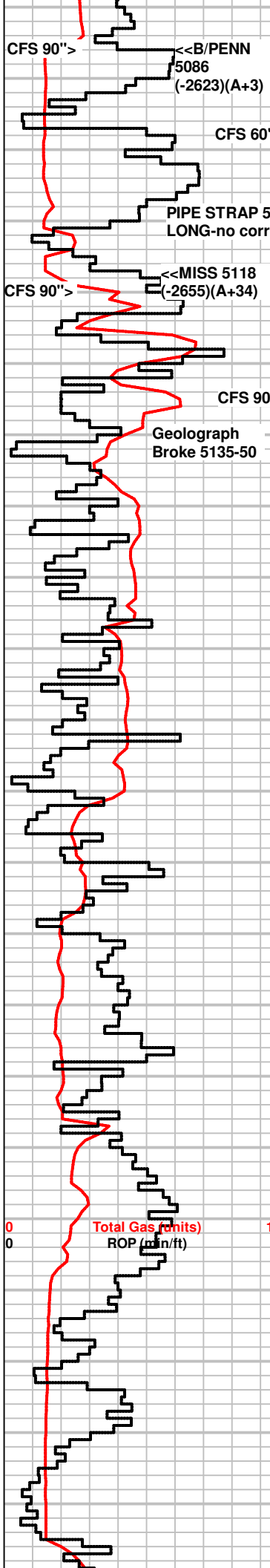
17 Units, Shale gas

19 Units, +6 UGK  
3 Unit Recycle

20 Units, +5 UGK Shale  
gas

39 Units, +24 UGK Shale  
gas

DST #2 5064-51203  
30-60-60-120  
SB, BOB/13"  
NBB  
SB, BOB/1"  
WBB 1"  
REC: 2025' Total  
1815' GIP  
50' CO  
160' GOWCM  
(5g,15o,8w,72m)  
IH 2550#  
IF 24-60#  
ISIP 1431#  
FF 62-110#  
FSIP 1455#  
FH 2425#



MS, A.A., 3 pcs wormy stain, milky cut, residual ring cut 2 pcs rare bright fluor

SH, blk, sea green, sandy

SS clusters, green, f-gr, well sorted, rare qtz gr, co. NS

MS, crm to off white, f-xln, dense,

SH, varicolored, SS clusters A.A., f-gr, well sorted, Chert, off white to bone white, fossilif pcs, some blocky, Good odor in bag, scatt. bright fluor, oil cut from 5 pcs

Chert, white, yellowish, red, some gray, blocky, brn inclusions, no stn

Dolo, brn to lt. brn, f-xln, firm to hard, mineral fluor, rare bright fluor, cut when crushed, good odor in bag,

Dolo, brn, f-xln, hard, mineral fluor, good odor, some spotty stn(3 pcs), bright fluor, cut only when crushed,

MS, crm to tan, f-xln, dense, oolitic in part, hard, NS

Dolo, brn, f-xln, fn-sucrosic, hard, mineral fluor, no odor, NS

MS, crm to tan, dolomitic, f-xln, A.A., rare spotty edge stn, no cut, NS

WS, crm to off white, f-xln, oolitic pcs throughout, Chert, white, brn, rare fossilif., some dolo, brn, hard, fn-xln, NS

Dolo, gray to brn, f-xln, sucrosic sugary txt, hard, mineral fluor, NS

WS, crm to off white, f-xln, soft to firm, some Chert, white Scatt Dolo, gray to brn, hard, A.A.

MS, crm to off white, A.A. assoc. Chert, white, some fossils

WS, off white, f-xln, oolitic, firm, rare glauc, some fossils, NS Chert, white, gray

Dolo, crm to gray, vf-suc, firm, bright mineral fluor, NS Chert, white, some platy, weathered

Dolo, crm to gray, vf-suc to f-suc, firm, bright mineral fluor, NS Chert, white, some blocky, weathered

MS-WS, crm to off white, f-xln, some oolitic, Chert, white, Some Dolo, brn, f-xln, firm, SS clusters, opaque-green, f-gr, well sorted, glauc specs throughout, hard, NS

MS-WS, off white, f-xln, firm to hard, oolitic in part, dull fluor, NS

Dolo, brn, f-suc, firm

WS-PS, off white, hard to firm, oolitic, NS, influx Chert, white

WS-PS, off white, f-xln, hard, friable pcs, oolitic, scatt chalky pcs, NS, rare white Chert

WS, off white, A.A.

Dolo, brn, v. f-suc, sugary txt, firm to hard, dull mineral fluor,

Dolo, brn to crm, vf-suc, hard, A.A. carrying some WS, A.A.

WS-PS, off white, f-xln, hard, no flour, NS

Dolo, brn to crm, vf to f-xln, sucrosic, some earthy in txt.

MS-WS off white, chalky pcs, some fossilif, dense, NS

Grav: 36 API  
Rw .4 @ 21°F  
CI 64000

25 Units, +10 UGK,  
recycle of 7 Units

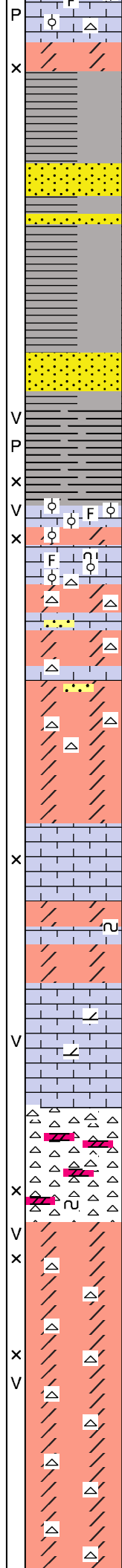
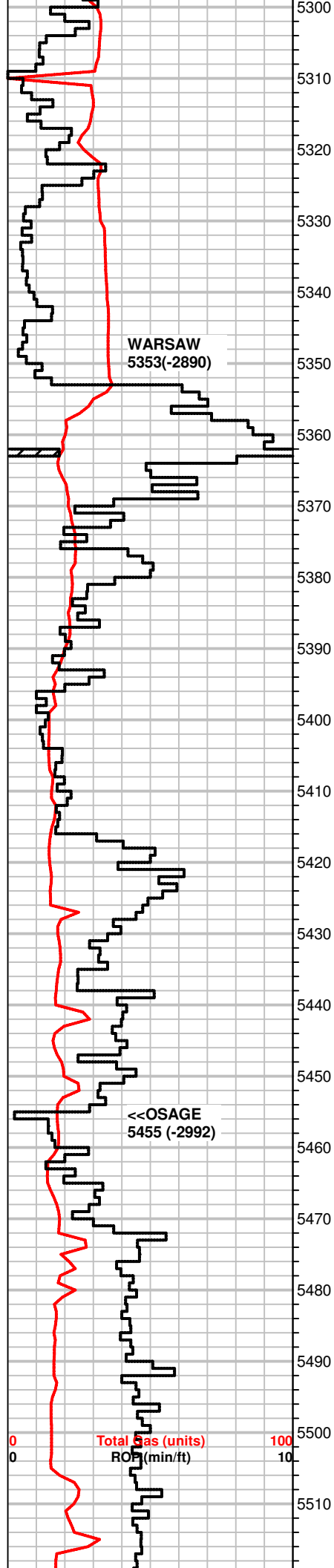
67 Units +44 UGK  
Recycle  
57 Units +29 Units

DST #3 5124-5135  
45-60-25-60  
WB surf-3"  
NBB  
NB  
NBB  
REC:110' V Sli OCWM  
(TRo, 25w, 75M)  
IH 2561#  
IF 33-49#  
ISIP 1315#  
FF 56-63#  
FSIP 1281#  
FH 2405#  
Rw .4 @ 25°F  
CI 53000

32 Units, +16 UGK

32 Units, +16 UGK,





MS-WS off white, chunky pcs, some fossilif, dense, NS  
Chert, white

Dolo, limey, brn to crm, vf-suc, hard

SH, gray dk, gray

SS clusters, A.A., well sorted f-gr, hard, NS  
Chert, white w/ gray inclusions, fossilif.

Sandy SH, green to gray, co qtz grs.

Rare SS clusters, green to clear, poorly sorted, soft, friable, 1 Shaly pc, gray,

SH, black, dk. gray, gray, green  
Sandy SH, green, glauc

MS-WS, crm to lt. tan, f-xln, some pcs dense, some oolitic,  
Dolo, brn, f-xln, hard, some recrystallized fossils, dull flour, rare bright mineral flour, NS

MS-WS, off white to crm, some brn, f-xln, fossilif/oolitic pcs, rare dense mic-xln pcs, rare glauc specs.

Dolo, brn, f to m-suc, sugary granular txt, Chert, white  
MS-WS, AA, some brn, dense, fossilif, NS, SS cluster, clear to green, poorly sorted

Dolo, A.A.

PS, crm to off white, m to c-gr ooids, fossilif, firm to hard,  
Rare Dolo, brn, f-suc, NS

Dolo, crm to gray, f-suc, some pcs granular, firm, some glauc  
Decr. PS A.A.

WS-PS, gray to crm, m-xln, fossilif., abdnt. glauc, some f-xln,  
dense,

PS, A.A., sli. dolomitic,

PS, A.A.  
Chert, white, some fossilif, blocky, orange and white milky color

Chert, white, some clear, crystalline looking(quartz) inclusions,  
some blocky, gray w/ white inclusions

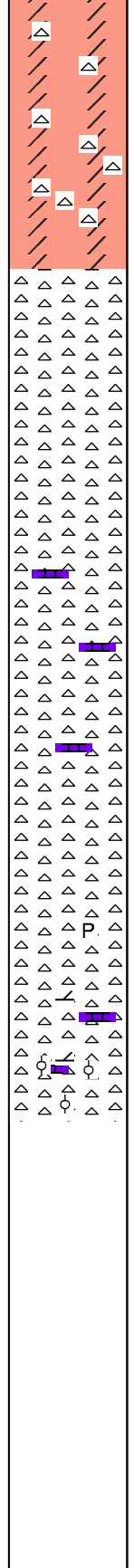
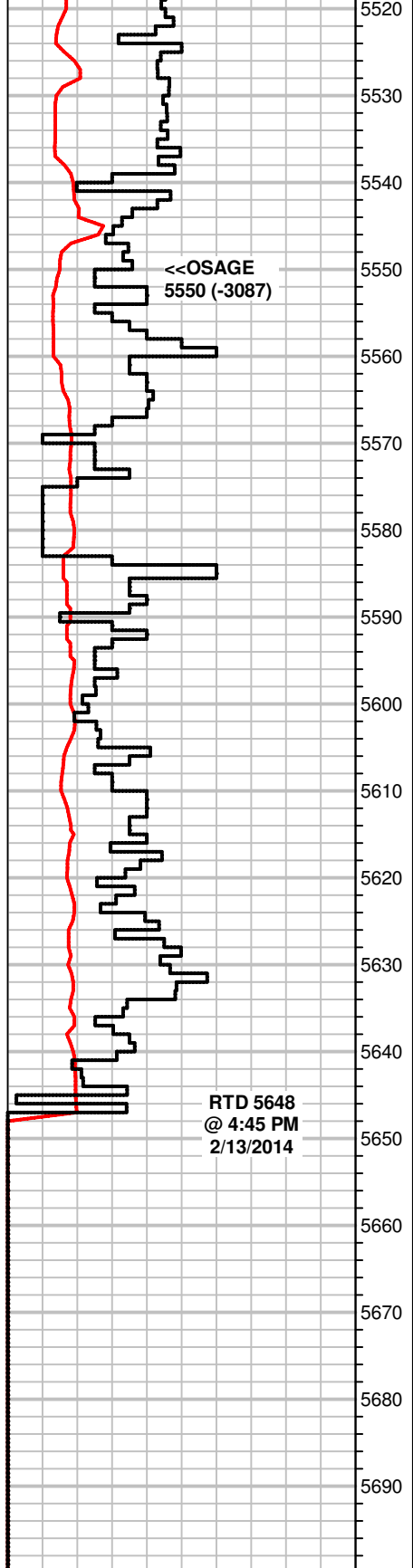
Dolo, gray, vf-suc, firm, some glauc, mottled looking, rare bright mineral flour, NS  
Chert, white, blocky, some attached to dolo pcs,

Dolo, gray, vf-suc, f-xln, firm  
Chert, A.A., white, to gray

Dolo. A.A., some silicious,  
Chert, A.A. white to off white, gray

Dolo, gray, mic-xln, hard, NS,  
Chert, A.A. white, gray, clear

increase in background?



5520 Dolo, , crm to gray, f-xln, firm, dull fluor, NS  
Chert, A.A.,

5530 Dolo. A.A.  
Dolo, gray, some crm, vf-suc, silicious in part,  
Chert, white to clear, some gray, blocky in part

5540 Dolo, crm to gray, vf-suc, A.A., dull fluor, NS  
Chert, white, clear, gray,

5550 <<OSAGE 5550 (-3087)  
Influx Chert, white, fresh, some block, rare oolitic, some fossilif,  
assoc, WS, white, f-xln

5560 Chert, White, A.A. blocky

5570 Chert, A.A.

5580 Chert, white, some smoky gray in part, blocky pcs abdnt.  
rare WS, white, f-xln, suboolitic in part, dense

5590 Chert, white, A.A.  
WS, white to crm, f-xln, soft to firm, NS, SH, gray carrying?

5600 Chert, white w/gray inclusions, fossilif pcs, blocky, fluor, NS  
some WS, A.A., rare Dolo, gray to crm, vf-xln, NS

5610 Chert, A.A., dec amount of fluor, NS

5620 Chert, A.A. ,rare pyrite, some gray pcs, some SH, rare blk, gray

5630 Chert, white, smoky gray, some platy, some MS, white to off white,  
f-xln, sli dolomitic.

5640 MS, white, f-xln, sli dolomitic, oolitic in part, mineral fluor, NS  
Chert, white, fossilif, some blocky

5650

5660

5670

5680

5690