



DRILL STEM TEST REPORT

Prepared For: **Hamby Oil LLC**

PO Box 205
Ellinwood KS 67528

ATTN: Chuck Hamby/Kurt Tal

Miller #2

16-20s-11w Barton,KS

Start Date: 2013.11.11 @ 17:37:06

End Date: 2013.11.11 @ 23:29:21

Job Ticket #: 52449 DST #: 1

Trilobite Testing, Inc
PO Box 362 Hays, KS 67601
ph: 785-625-4778 fax: 785-625-5620

Printed: 2013.11.15 @ 16:40:08



**TRILOBITE
TESTING, INC**

DRILL STEM TEST REPORT

Hamby Oil LLC

16-20s-11w Barton,KS

PO Box 205
Ellinwood KS 67528

Miller #2

Job Ticket: 52449

DST#: 1

ATTN: Chuck Hamby/Kurt Tal

Test Start: 2013.11.11 @ 17:37:06

GENERAL INFORMATION:

Formation: **Arbuckle**

Deviated: No Whipstock: ft (KB)

Time Tool Opened: 20:02:51

Time Test Ended: 23:29:21

Test Type: Conventional Bottom Hole (Initial)

Tester: Chris Staats

Unit No: #47

Interval: 3252.00 ft (KB) To 3292.00 ft (KB) (TVD)

Reference Elevations: 1773.00 ft (KB)

Total Depth: 3292.00 ft (KB) (TVD)

1765.00 ft (CF)

Hole Diameter: 7.88 inches Hole Condition: Fair

KB to GR/CF: 8.00 ft

Serial #: 8676 Outside

Press@RunDepth: 18.91 psig @ 3253.00 ft (KB)

Capacity: 8000.00 psig

Start Date: 2013.11.11 End Date: 2013.11.11

Last Calib.: 2013.11.11

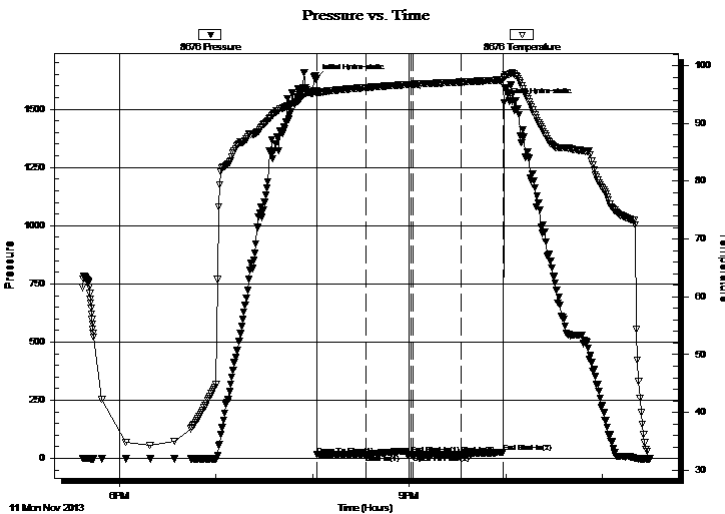
Start Time: 17:37:11 End Time: 23:29:20

Time On Btm: 2013.11.11 @ 20:01:51

Time Off Btm: 2013.11.11 @ 21:59:06

TEST COMMENT: IF: Weak blow 1"
IS: No blow back
FF: No blow back Flushed tool
FS: No blow back

PRESSURE SUMMARY



| Time (Min.) | Pressure (psig) | Temp (deg F) | Annotation |
|-------------|-----------------|--------------|----------------------|
| 0 | 1630.06 | 95.60 | Initial Hydro-static |
| 1 | 15.92 | 95.22 | Open To Flow (1) |
| 31 | 17.85 | 96.20 | Shut-In(1) |
| 59 | 17.05 | 96.75 | End Shut-In(1) |
| 61 | 17.11 | 96.77 | Open To Flow (2) |
| 91 | 18.91 | 97.16 | Shut-In(2) |
| 117 | 26.82 | 97.55 | End Shut-In(2) |
| 118 | 1530.08 | 97.90 | Final Hydro-static |

Recovery

| Length (ft) | Description | Volume (bbl) |
|-------------|-------------|--------------|
| 5.00 | Mud | 0.07 |
| | | |
| | | |
| | | |
| | | |

Gas Rates

| | Choke (inches) | Pressure (psig) | Gas Rate (Mcf/d) |
|--|----------------|-----------------|------------------|
| | | | |



**TRILOBITE
TESTING, INC**

DRILL STEM TEST REPORT

Hamby Oil LLC

16-20s-11w Barton,KS

PO Box 205
Ellinwood KS 67528

Miller #2

Job Ticket: 52449

DST#: 1

ATTN: Chuck Hamby/Kurt Tal

Test Start: 2013.11.11 @ 17:37:06

GENERAL INFORMATION:

Formation: **Arbuckle**

Deviated: No Whipstock: ft (KB)

Time Tool Opened: 20:02:51

Time Test Ended: 23:29:21

Test Type: Conventional Bottom Hole (Initial)

Tester: Chris Staats

Unit No: #47

Interval: 3252.00 ft (KB) To 3292.00 ft (KB) (TVD)

Reference Elevations: 1773.00 ft (KB)

Total Depth: 3292.00 ft (KB) (TVD)

1765.00 ft (CF)

Hole Diameter: 7.88 inches Hole Condition: Fair

KB to GR/CF: 8.00 ft

Serial #: 6773 Outside

Press@RunDepth: psig @ 3253.00 ft (KB)

Capacity: 8000.00 psig

Start Date: 2013.11.11 End Date: 2013.11.11

Last Calib.: 2013.11.11

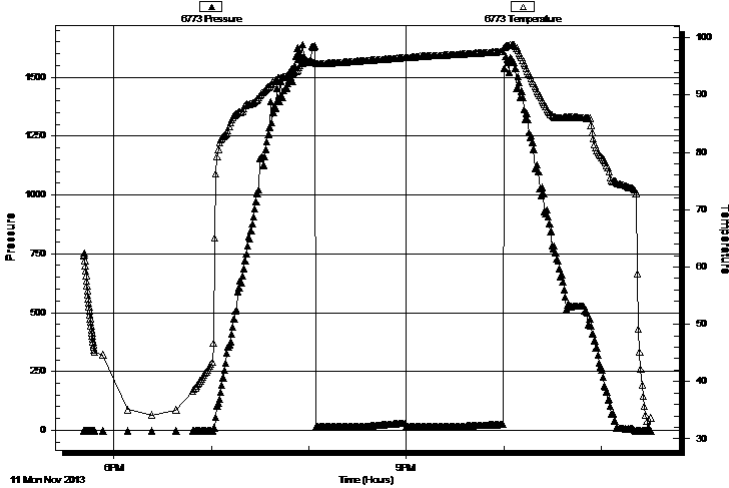
Start Time: 17:41:18 End Time: 23:30:57

Time On Btm:

Time Off Btm:

TEST COMMENT: IF: Weak blow 1"
IS: No blow back
FF: No blow back Flushed tool
FS: No blow back

Pressure vs. Time



PRESSURE SUMMARY

| Time (Min.) | Pressure (psig) | Temp (deg F) | Annotation |
|-------------|-----------------|--------------|------------|
| | | | |

Recovery

| Length (ft) | Description | Volume (bbl) |
|-------------|-------------|--------------|
| 5.00 | Mud | 0.07 |
| | | |
| | | |
| | | |
| | | |

Gas Rates

| Choke (inches) | Pressure (psig) | Gas Rate (Mcf/d) |
|----------------|-----------------|------------------|
| | | |



**TRILOBITE
TESTING, INC**

DRILL STEM TEST REPORT

TOOL DIAGRAM

Hamby Oil LLC

16-20s-11w Barton,KS

PO Box 205
Ellinwood KS 67528

Miller #2

Job Ticket: 52449

DST#: 1

ATTN: Chuck Hamby/Kurt Tal

Test Start: 2013.11.11 @ 17:37:06

Tool Information

| | | | | |
|---------------------------|--------------------|-----------------------|--------------------------------|------------------------------------|
| Drill Pipe: | Length: 3234.00 ft | Diameter: 3.80 inches | Volume: 45.36 bbl | Tool Weight: 2000.00 lb |
| Heavy Wt. Pipe: | Length: 0.00 ft | Diameter: 0.00 inches | Volume: 0.00 bbl | Weight set on Packer: 25000.00 lb |
| Drill Collar: | Length: 0.00 ft | Diameter: 2.25 inches | Volume: 0.00 bbl | Weight to Pull Loose: 50000.00 lb |
| | | | <u>Total Volume: 45.36 bbl</u> | Tool Chased 2.00 ft |
| Drill Pipe Above KB: | 3.00 ft | | | String Weight: Initial 48000.00 lb |
| Depth to Top Packer: | 3252.00 ft | | | Final 48000.00 lb |
| Depth to Bottom Packer: | ft | | | |
| Interval between Packers: | 40.00 ft | | | |
| Tool Length: | 61.00 ft | | | |
| Number of Packers: | 2 | Diameter: 6.75 inches | | |

Tool Comments:

Tool Description

| Tool Description | Length (ft) | Serial No. | Position | Depth (ft) | Accum. Lengths |
|------------------|-------------|------------|----------|------------|-------------------------------|
| Change Over Sub | 1.00 | | | 3232.00 | |
| Shut In Tool | 5.00 | | | 3237.00 | |
| Hydraulic tool | 5.00 | | | 3242.00 | |
| Packer | 5.00 | | | 3247.00 | 21.00 Bottom Of Top Packer |
| Packer | 5.00 | | | 3252.00 | |
| Stubb | 1.00 | | | 3253.00 | |
| Recorder | 0.00 | 8676 | Outside | 3253.00 | |
| Recorder | 0.00 | 6773 | Outside | 3253.00 | |
| Perforations | 3.00 | | | 3256.00 | |
| Change Over Sub | 1.00 | | | 3257.00 | |
| Drill Pipe | 31.00 | | | 3288.00 | |
| Change Over Sub | 1.00 | | | 3289.00 | |
| Bullnose | 3.00 | | | 3292.00 | 40.00 Bottom Packers & Anchor |

Total Tool Length: 61.00



**TRILOBITE
TESTING, INC**

DRILL STEM TEST REPORT

FLUID SUMMARY

Hamby Oil LLC

16-20s-11w Barton,KS

PO Box 205
Ellinwood KS 67528

Miller #2

Job Ticket: 52449

DST#: 1

ATTN: Chuck Hamby/Kurt Tal

Test Start: 2013.11.11 @ 17:37:06

Mud and Cushion Information

Mud Type: Gel Chem

Cushion Type:

Oil API:

deg API

Mud Weight: 9.00 lb/gal

Cushion Length:

ft

Water Salinity:

ppm

Viscosity: 54.00 sec/qt

Cushion Volume:

bbbl

Water Loss: 8.78 in³

Gas Cushion Type:

Resistivity: 0.00 ohm.m

Gas Cushion Pressure:

psig

Salinity: 4000.00 ppm

Filter Cake: 0.02 inches

Recovery Information

Recovery Table

| Length ft | Description | Volume bbl |
|--------------|-------------|---------------|
| 5.00 | Mud | 0.070 |

Total Length: 5.00 ft Total Volume: 0.070 bbl

Num Fluid Samples: 0

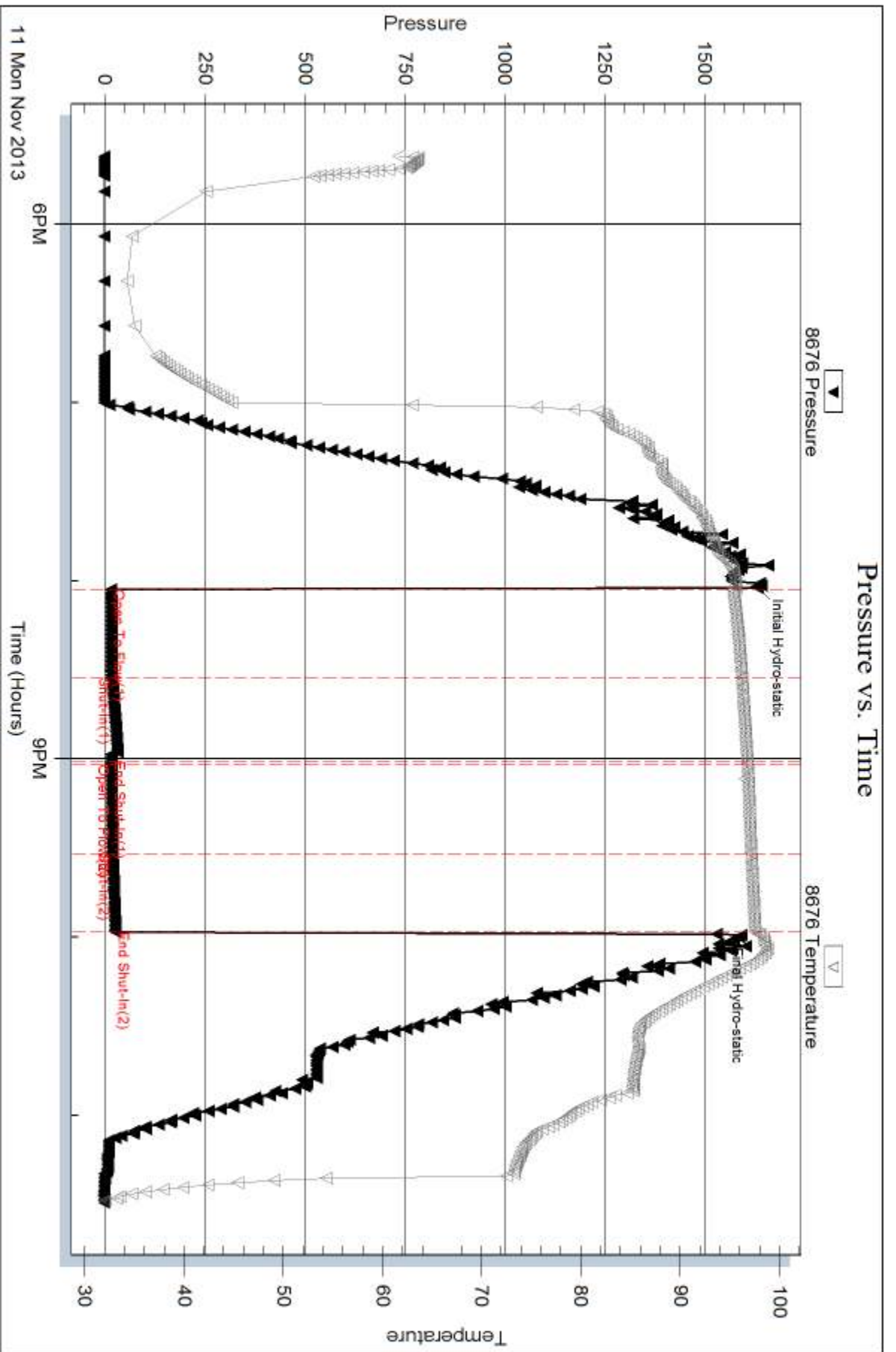
Num Gas Bombs: 0

Serial #:

Laboratory Name:

Laboratory Location:

Recovery Comments:

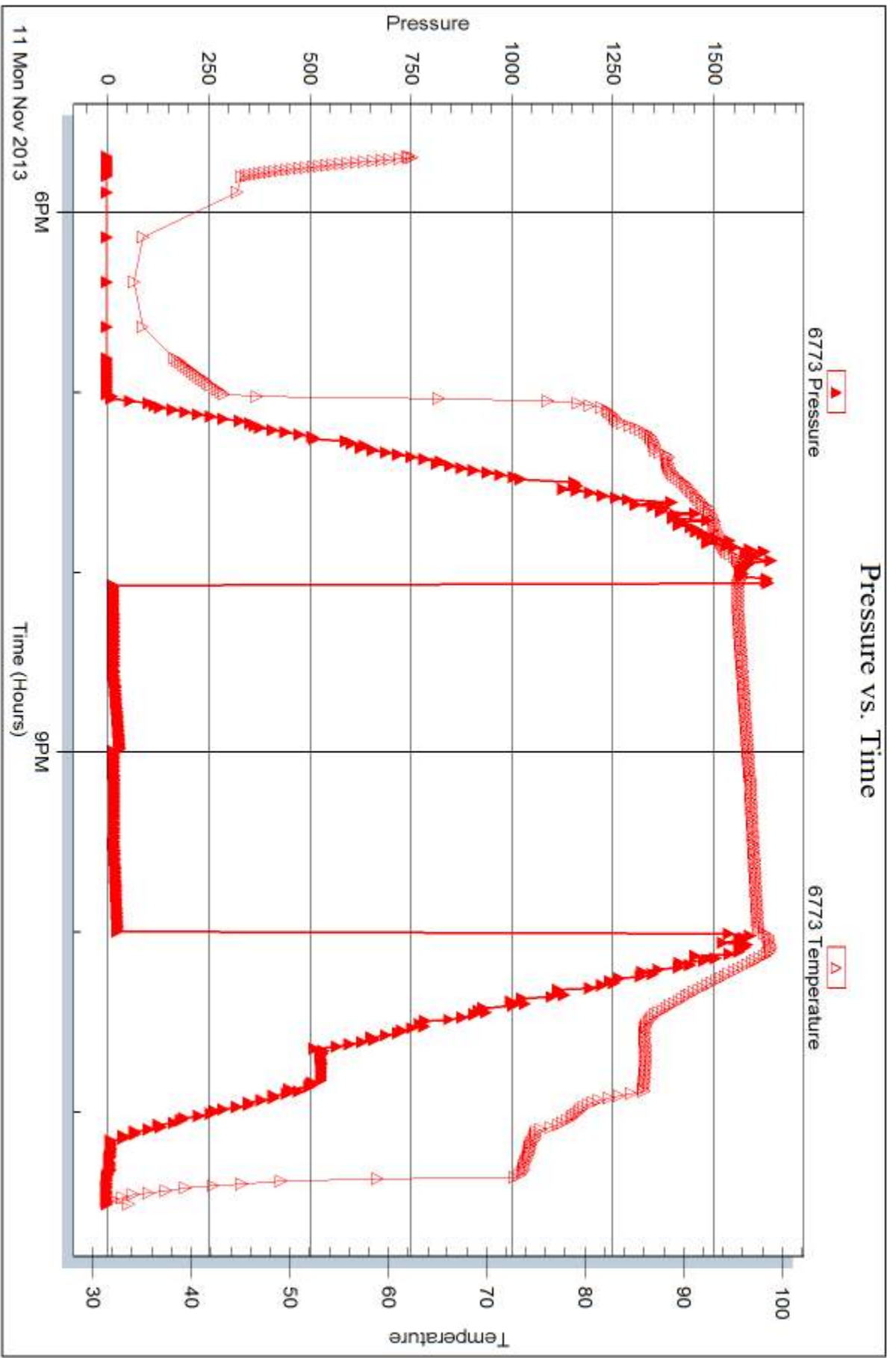


Serial #: 6773

Outside Handy Oil LLC

Miller #2

DST Test Number: 1



Trilobite Testing, Inc

Ref. No: 52449

Printed: 2013.11.15 @ 16:40:11



DRILL STEM TEST REPORT

Prepared For: **Hamby Oil LLC**

PO Box 205
Ellinwood KS 67528

ATTN: Chuck Hamby/Kurt Tal

Miller #2

16-20s-11w Barton,KS

Start Date: 2013.11.12 @ 06:20:52

End Date: 2013.11.12 @ 11:35:37

Job Ticket #: 52450 DST #: 2

Trilobite Testing, Inc
PO Box 362 Hays, KS 67601
ph: 785-625-4778 fax: 785-625-5620

Printed: 2013.11.15 @ 16:39:26

Hamby Oil LLC
16-20s-11w Barton,KS
Miller #2
DST # 2
Arbuckle
2013.11.12



**TRILOBITE
TESTING, INC**

DRILL STEM TEST REPORT

Hamby Oil LLC

16-20s-11w Barton,KS

PO Box 205
Ellinwood KS 67528

Miller #2

Job Ticket: 52450

DST#: 2

ATTN: Chuck Hamby/Kurt Tal

Test Start: 2013.11.12 @ 06:20:52

GENERAL INFORMATION:

Formation: **Arbuckle**

Deviated: No Whipstock: ft (KB)

Time Tool Opened: 08:13:37

Time Test Ended: 11:35:37

Test Type: Conventional Bottom Hole (Reset)

Tester: Chris Staats

Unit No: #47

Interval: 3252.00 ft (KB) To 3300.00 ft (KB) (TVD)

Reference Elevations: 1773.00 ft (KB)

Total Depth: 3300.00 ft (KB) (TVD)

1765.00 ft (CF)

Hole Diameter: 7.88 inches Hole Condition: Fair

KB to GR/CF: 8.00 ft

Serial #: 8676 Outside

Press@RunDepth: 18.90 psig @ 3253.00 ft (KB)

Capacity: 8000.00 psig

Start Date: 2013.11.12

End Date: 2013.11.12

Last Calib.: 2013.11.12

Start Time: 06:20:57

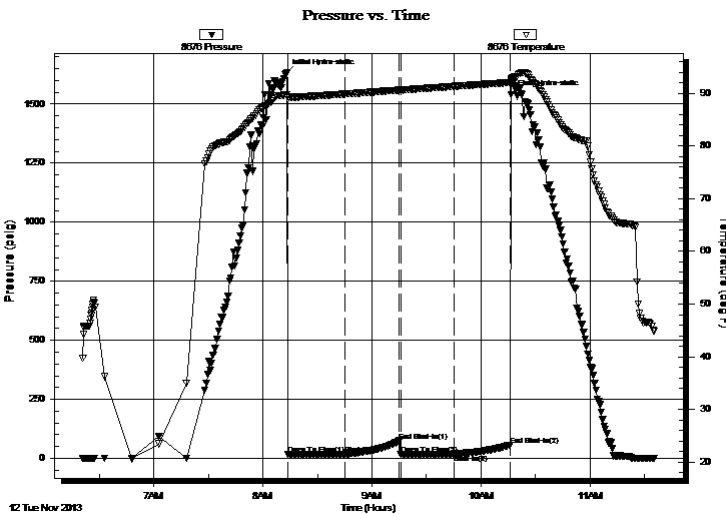
End Time: 11:35:36

Time On Btm: 2013.11.12 @ 08:12:52

Time Off Btm: 2013.11.12 @ 10:16:37

TEST COMMENT: IF: Weak blow 1 1/2"
IS: No blow back
FF: Weak surface blow
FS: No blow back

PRESSURE SUMMARY



| Time (Min.) | Pressure (psig) | Temp (deg F) | Annotation |
|-------------|-----------------|--------------|----------------------|
| 0 | 1629.95 | 89.72 | Initial Hydro-static |
| 1 | 16.49 | 89.35 | Open To Flow (1) |
| 33 | 18.12 | 89.86 | Shut-In(1) |
| 63 | 74.34 | 90.61 | End Shut-In(1) |
| 63 | 18.27 | 90.62 | Open To Flow (2) |
| 93 | 18.90 | 91.32 | Shut-In(2) |
| 123 | 55.82 | 92.07 | End Shut-In(2) |
| 124 | 1540.35 | 92.52 | Final Hydro-static |

Recovery

| Length (ft) | Description | Volume (bbl) |
|-------------|-------------|--------------|
| 5.00 | MUD | 0.07 |
| | | |
| | | |
| | | |
| | | |

* Recovery from multiple tests

Gas Rates

| Choke (inches) | Pressure (psig) | Gas Rate (Mcf/d) |
|----------------|-----------------|------------------|
| | | |



TRILOBITE
TESTING, INC

DRILL STEM TEST REPORT

Hamby Oil LLC

16-20s-11w Barton, KS

PO Box 205
Ellinwood KS 67528

Miller #2

Job Ticket: 52450

DST#: 2

ATTN: Chuck Hamby/Kurt Tal

Test Start: 2013.11.12 @ 06:20:52

GENERAL INFORMATION:

Formation: **Arbuckle**

Deviated: No Whipstock: ft (KB)

Time Tool Opened: 08:13:37

Time Test Ended: 11:35:37

Test Type: Conventional Bottom Hole (Reset)

Tester: Chris Staats

Unit No: #47

Interval: **3252.00 ft (KB) To 3300.00 ft (KB) (TVD)**

Reference Elevations: 1773.00 ft (KB)

Total Depth: 3300.00 ft (KB) (TVD)

1765.00 ft (CF)

Hole Diameter: 7.88 inches Hole Condition: Fair

KB to GR/CF: 8.00 ft

Serial #: 6773 Outside

Press@RunDepth: psig @ 3253.00 ft (KB)

Capacity: 8000.00 psig

Start Date: 2013.11.12 End Date: 2013.11.12

Last Calib.: 2013.11.12

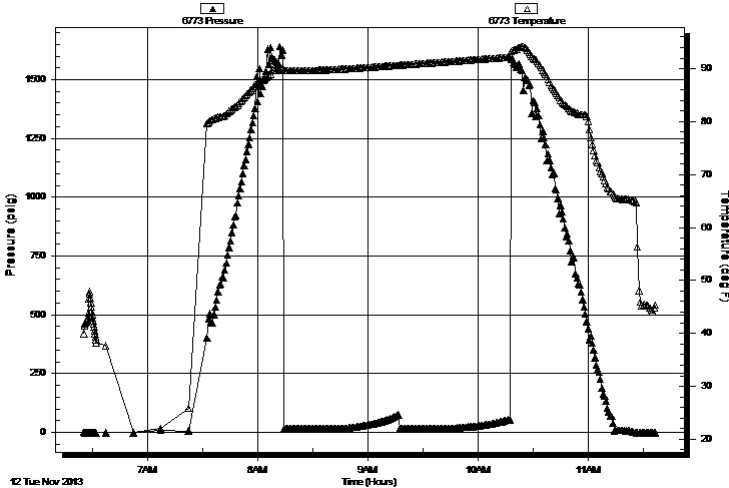
Start Time: 06:25:01 End Time: 11:36:55

Time On Btm:

Time Off Btm:

TEST COMMENT: IF: Weak blow 1 1/2"
IS: No blow back
FF: Weak surface blow
FS: No blow back

Pressure vs. Time



PRESSURE SUMMARY

| Time (Min.) | Pressure (psig) | Temp (deg F) | Annotation |
|-------------|-----------------|--------------|------------|
|-------------|-----------------|--------------|------------|

Recovery

| Length (ft) | Description | Volume (bbl) |
|-------------|-------------|--------------|
| 5.00 | MUD | 0.07 |
| | | |
| | | |
| | | |
| | | |

Gas Rates

| Choke (inches) | Pressure (psig) | Gas Rate (Mcf/d) |
|----------------|-----------------|------------------|
|----------------|-----------------|------------------|

* Recovery from multiple tests



**TRILOBITE
TESTING, INC**

DRILL STEM TEST REPORT

TOOL DIAGRAM

Hamby Oil LLC

16-20s-11w Barton,KS

PO Box 205
Ellinwood KS 67528

Miller #2

Job Ticket: 52450

DST#: 2

ATTN: Chuck Hamby/Kurt Tal

Test Start: 2013.11.12 @ 06:20:52

Tool Information

| | | | | | |
|---------------------------|--------------------|-----------------------|--------------------------------|------------------------|-------------|
| Drill Pipe: | Length: 3234.00 ft | Diameter: 3.80 inches | Volume: 45.36 bbl | Tool Weight: | 2000.00 lb |
| Heavy Wt. Pipe: | Length: 0.00 ft | Diameter: 0.00 inches | Volume: 0.00 bbl | Weight set on Packer: | 25000.00 lb |
| Drill Collar: | Length: 0.00 ft | Diameter: 2.25 inches | Volume: 0.00 bbl | Weight to Pull Loose: | 48000.00 lb |
| | | | <u>Total Volume: 45.36 bbl</u> | Tool Chased | 2.00 ft |
| Drill Pipe Above KB: | 3.00 ft | | | String Weight: Initial | 48000.00 lb |
| Depth to Top Packer: | 3252.00 ft | | | Final | 48000.00 lb |
| Depth to Bottom Packer: | ft | | | | |
| Interval between Packers: | 48.00 ft | | | | |
| Tool Length: | 69.00 ft | | | | |
| Number of Packers: | 2 | Diameter: 6.75 inches | | | |

Tool Comments:

Tool Description

| Tool Description | Length (ft) | Serial No. | Position | Depth (ft) | Accum. Lengths |
|------------------|-------------|------------|----------|------------|-------------------------------|
| Change Over Sub | 1.00 | | | 3232.00 | |
| Shut In Tool | 5.00 | | | 3237.00 | |
| Hydraulic tool | 5.00 | | | 3242.00 | |
| Packer | 5.00 | | | 3247.00 | 21.00 Bottom Of Top Packer |
| Packer | 5.00 | | | 3252.00 | |
| Stubb | 1.00 | | | 3253.00 | |
| Recorder | 0.00 | 8676 | Outside | 3253.00 | |
| Recorder | 0.00 | 6773 | Outside | 3253.00 | |
| Perforations | 4.00 | | | 3257.00 | |
| Change Over Sub | 1.00 | | | 3258.00 | |
| Drill Pipe | 31.00 | | | 3289.00 | |
| Change Over Sub | 1.00 | | | 3290.00 | |
| Perforations | 7.00 | | | 3297.00 | |
| Bullnose | 3.00 | | | 3300.00 | 48.00 Bottom Packers & Anchor |

Total Tool Length: 69.00



**TRILOBITE
TESTING, INC**

DRILL STEM TEST REPORT

FLUID SUMMARY

Hamby Oil LLC

16-20s-11w Barton,KS

PO Box 205
Ellinwood KS 67528

Miller #2

Job Ticket: 52450

DST#: 2

ATTN: Chuck Hamby/Kurt Tal

Test Start: 2013.11.12 @ 06:20:52

Mud and Cushion Information

Mud Type: Gel Chem

Cushion Type:

Oil API:

deg API

Mud Weight: 9.00 lb/gal

Cushion Length:

ft

Water Salinity:

ppm

Viscosity: 54.00 sec/qt

Cushion Volume:

bbbl

Water Loss: 8.77 in³

Gas Cushion Type:

Resistivity: 0.00 ohm.m

Gas Cushion Pressure:

psig

Salinity: 4000.00 ppm

Filter Cake: 0.02 inches

Recovery Information

Recovery Table

| Length ft | Description | Volume bbl |
|--------------|-------------|---------------|
| 5.00 | MUD | 0.070 |

Total Length: 5.00 ft Total Volume: 0.070 bbl

Num Fluid Samples: 0

Num Gas Bombs: 0

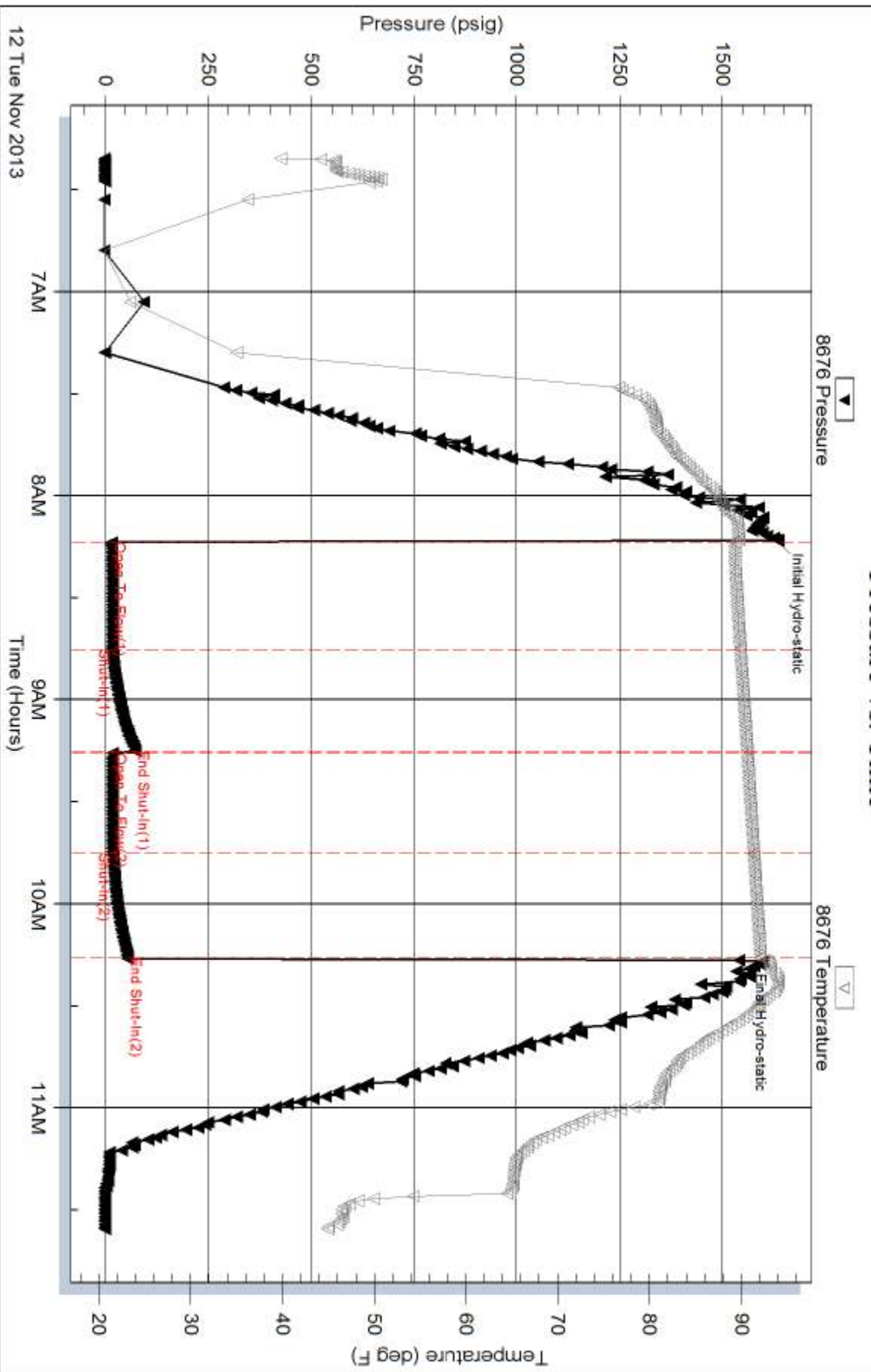
Serial #:

Laboratory Name:

Laboratory Location:

Recovery Comments:

Pressure vs. Time

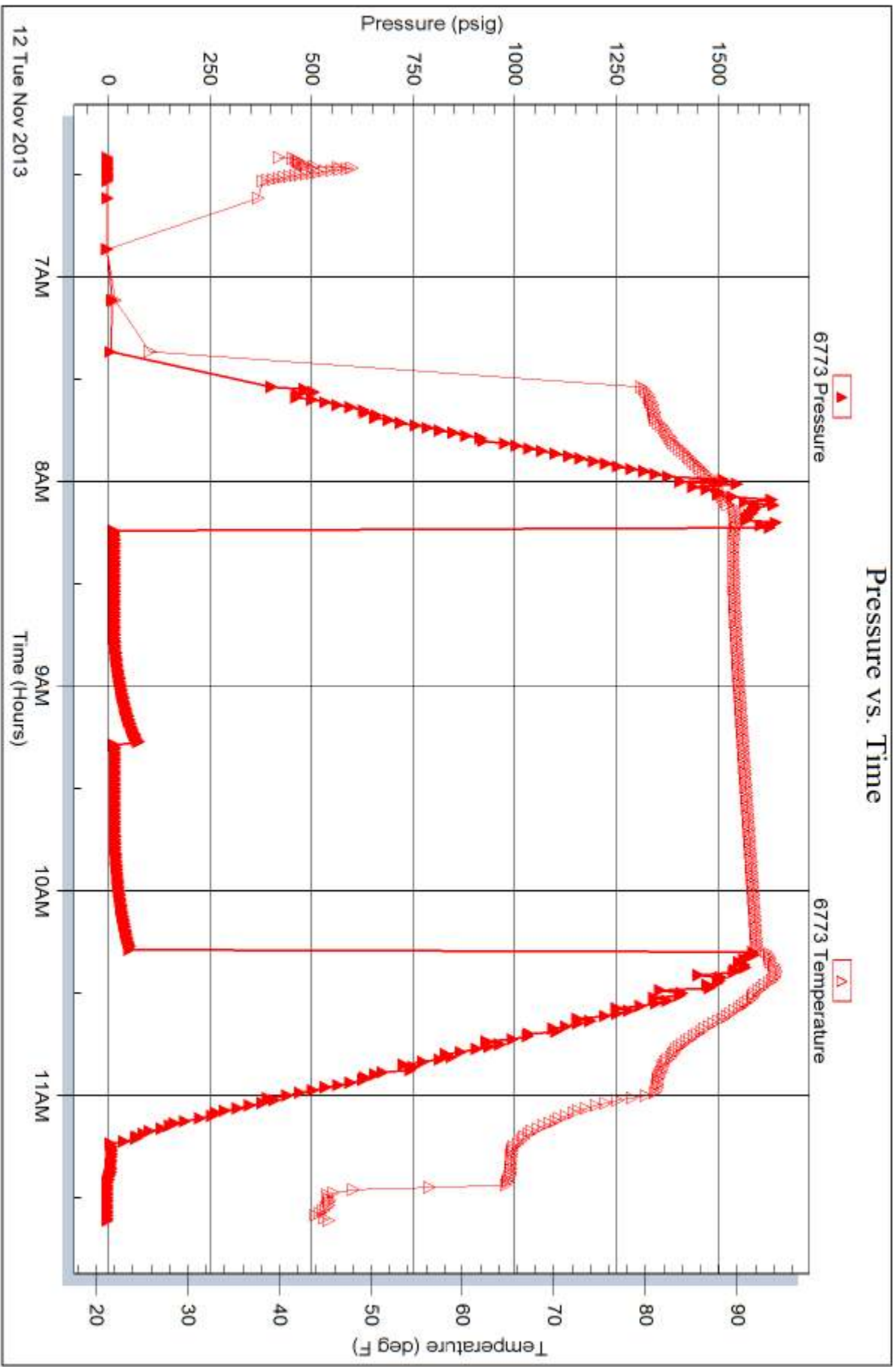


Serial #: 6773

Outside Handy Oil LLC

Miller #2

DST Test Number: 2





TRILOBITE TESTING INC.

1515 Commerce Parkway • Hays, Kansas 67601

Test Ticket

NO. 52449

Well Name & No. Miller #2 Test No. 1 Date 11-11-13
 Company Hamby Oil LLC Elevation 1773 KB 1765 GL
 Address PO box 205 Ellinwood KS 67528
 Co. Rep / Geo. Chuck Hamby / Kurt Talbot Rig SOUTHWIND #6
 Location: Sec. 16 Twp. 20 Rge. 11 Co. Barton State KS

Interval Tested 3252-3292 Zone Tested Arbuckle
 Anchor Length 40 Drill Pipe Run 3234 Mud Wt. 9.3
 Top Packer Depth 3280 47 Drill Collars Run 0 Vis 54
 Bottom Packer Depth 3280 3292 Wt. Pipe Run 0 WL 8.8
 Total Depth 3292 Chlorides 4000 ppm System LCM 1#

Blow Description IF: weak blow 1"
ISF: NO blow back
FF: NO blow flushed too 1
FST: NO blow back

| Rec | Feet of | %gas | %oil | %water | %mud |
|---------------|--------------------|------|------|--------|------|
| Rec <u>5'</u> | Feet of <u>MUD</u> | | | | |
| Rec | Feet of | %gas | %oil | %water | %mud |
| Rec | Feet of | %gas | %oil | %water | %mud |
| Rec | Feet of | %gas | %oil | %water | %mud |

Rec Total 5' BHT 95° Gravity — API RW @ ° F Chlorides — ppm

| | | |
|-------------------------------------|---|--|
| (A) Initial Hydrostatic <u>1630</u> | <input checked="" type="checkbox"/> Test <u>1150</u> | T-On Location <u>17:20</u> |
| (B) First Initial Flow <u>15</u> | <input type="checkbox"/> Jars | T-Started <u>20:02</u> |
| (C) First Final Flow <u>17</u> | <input type="checkbox"/> Safety Joint | T-Open <u>23:29</u> |
| (D) Initial Shut-In <u>17</u> | <input type="checkbox"/> Circ Sub | T-Pulled <u>22:00</u> |
| (E) Second Initial Flow <u>17</u> | <input type="checkbox"/> Hourly Standby | T-Out <u>23:28</u> |
| (F) Second Final Flow <u>18</u> | <input checked="" type="checkbox"/> Mileage <u>110 miles</u> 170.50 | Comments |
| (G) Final Shut-In <u>26</u> | <input type="checkbox"/> Sampler | |
| (H) Final Hydrostatic <u>1530</u> | <input type="checkbox"/> Straddle | <input type="checkbox"/> Ruined Shale Packer |

Initial Open 30
 Initial Shut-In 30
 Final Flow 30
 Final Shut-In 30

Sub Total 1320.50

Approved By Kurt Talbot Our Representative Chi-Ste

Trilobite Testing Inc. shall not be liable for damaged of any kind of the property or personnel of the one for whom a test is made, or for any loss suffered or sustained, directly or indirectly, through the use of its equipment, or its statements or opinion concerning the results of any test, tools lost or damaged in the hole shall be paid for at cost by the party for whom the test is made.



TRILOBITE TESTING INC.

1515 Commerce Parkway • Hays, Kansas 67601

Test Ticket

NO. 52450

Well Name & No. Miller #2 Test No. 2 Date 11-12-13
 Company Hamby oil LLC Elevation 1773 KB 1765 GL
 Address PO box 205 Ellinwood KS 67528
 Co. Rep / Geo. Chuck Hamby / Kurt talbot Rig South wind #6
 Location: Sec. 16 Twp. 20 Rge. 11 Co. Barton State KS

Interval Tested 3252 - 3300 Zone Tested AR buckle
 Anchor Length 48' Drill Pipe Run _____ Mud Wt. 9.3
 Top Packer Depth 3247 Drill Collars Run 0 Vis 54
 Bottom Packer Depth 3252 Wt. Pipe Run 0 WL 88
 Total Depth 3300 Chlorides 4000 ppm System LCM 1#

Blow Description IF: Weak blow 1 1/2"
ISI: NO blow back
FF: Weak surface blow
FSI: NO blow back

| Rec | Feet of | %gas | %oil | %water | %mud |
|---------------|---|------|------|--------|------|
| Rec <u>5'</u> | Feet of <u>MUD with oil spots in tool</u> | | | | |
| Rec _____ | Feet of _____ | %gas | %oil | %water | %mud |
| Rec _____ | Feet of _____ | %gas | %oil | %water | %mud |
| Rec _____ | Feet of _____ | %gas | %oil | %water | %mud |

Rec Total 5 BHT 90° Gravity _____ API RW _____ @ _____ ° F Chlorides _____ ppm

| | | |
|-------------------------------------|--|--|
| (A) Initial Hydrostatic <u>1629</u> | <input checked="" type="checkbox"/> Test <u>1150</u> | T-On Location <u>6:10</u> |
| (B) First Initial Flow <u>16</u> | <input type="checkbox"/> Jars _____ | T-Started <u>6:20</u> |
| (C) First Final Flow <u>18</u> | <input type="checkbox"/> Safety Joint _____ | T-Open <u>8:13</u> |
| (D) Initial Shut-In <u>74</u> | <input type="checkbox"/> Circ Sub _____ | T-Pulled <u>10:15</u> |
| (E) Second Initial Flow <u>18</u> | <input type="checkbox"/> Hourly Standby _____ | T-Out <u>11:30</u> |
| (F) Second Final Flow <u>18</u> | <input checked="" type="checkbox"/> Mileage <u>341</u> | Comments <u>loaded tools</u> |
| (G) Final Shut-In <u>55</u> | <input type="checkbox"/> Sampler _____ | <u>11-13 15:00 hrs</u> |
| (H) Final Hydrostatic <u>1540</u> | <input type="checkbox"/> Straddle _____ | <input type="checkbox"/> Ruined Shale Packer _____ |

Initial Open 30 Shale Packer _____
 Initial Shut-In 30 Ruined Packer _____
 Final Flow 30 Extra Packer _____
 Final Shut-In 30 Extra Recorder _____
 Sub Total 800 Day Standby 1d 3.5h Total 2291
 Accessibility _____ MP/DST Disc't _____

Approved By Kurt Talbot Sub Total 1491 Our Representative Chris

Trilobite Testing Inc. shall not be liable for damaged of any kind of the property or personnel of the one for whom a test is made, or for any loss suffered or sustained, directly or indirectly, through the use of its equipment, or its statements or opinion concerning the results of any test, tools lost or damaged in the hole shall be paid for at cost by the party for whom the test is made.