



Geologist's Report

Company: **Hambly Oil, LLC**
 Lease: **Miller #2**
 Field: **Chase-Silica**
 Location: **W2-NW-NW-NE**
 Sec: **16** Twsp: **20S** Rge: **11W**
 County: **Barton** State: **Kansas**
 GL: ~~1765~~ KB: ~~1775~~
 1765 1775

Contractor: **Southwind Drilling Co., Rig #6**
 Spud: **11/7/13** Comp: **11/13/13**
 RTD: **3650'** LTD: **3647'**
 Mud Up: **3000'** Type Mud: **Chemical/Displaced**

Samples Saved From: **3100' to RTD**
 Drilling Time Kept From: **3000' to RTD**
 Samples Examined From: **3100' to RTD**
 Geological Supervision From: **3300' to RTD**
 Geologist on Well: **Kurt Talbott**

Surface Casing: **8 5/8" @ 310'**
 Production: **5 1/2"@**

Logs: **By Pioneer: CNL/CDL, DIL, MEL, SONIC**

ROCK TYPES

Doprism shale, gm Carbon Sh
 Lmet fw<7 shale, gry Shool

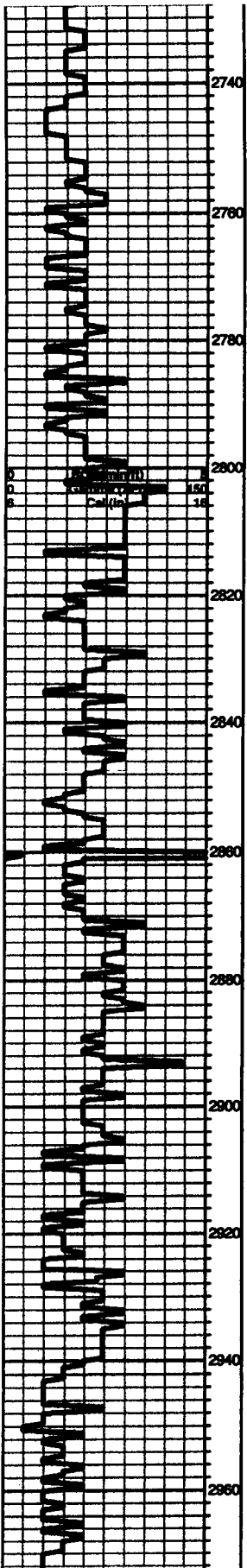
OTHER SYMBOLS

DST

 DST Int
 DST alt

Printed by GEOstrip VC Striplog version 4.0.7.0 (www.gral.ca)

Curve Track #1				Depth Intervals		Lithology	Oil Show	Geological Descriptions	TG, C1 - C5				
ROP (min/ft)	Gamma (API)	Cal (in)	DST	Cored Interval	DST Interval				Total Gas (units)	C1 (units)	C2 (units)	C3 (units)	C4 (units)
1:240 Imperial ROP (min/ft) 100 Gamma (API) 150 Cal (in) 16									1:240 Imperial Total Gas (units) 100 C1 (units) 100 C2 (units) 100 C3 (units) 100 C4 (units) 100				
2720													



A/A

Ls-crm/tan/gry, f-med xln, slightly dolomitic, sucrosic, few fossils, scattered ppt to inner xln por, cherty

Ls-crm/tan, fxdn, fossils, dense, poor vis por, slightly chalky

Ls-crm/tan, fxdn, slightly dolomitic, few fossils, poor vis por, slightly cherty

Heebner 2905.0 (-1132.0) -1131.0

Black carbon shale

Shale-gry/grn

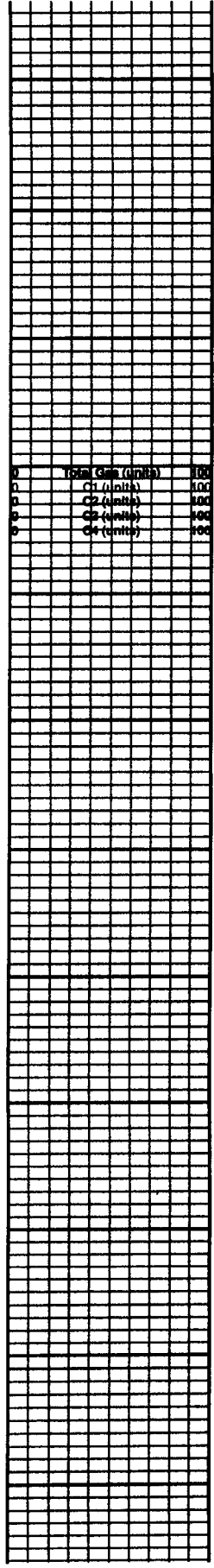
Toronto 2924.0 (-1151.0) -1147.0

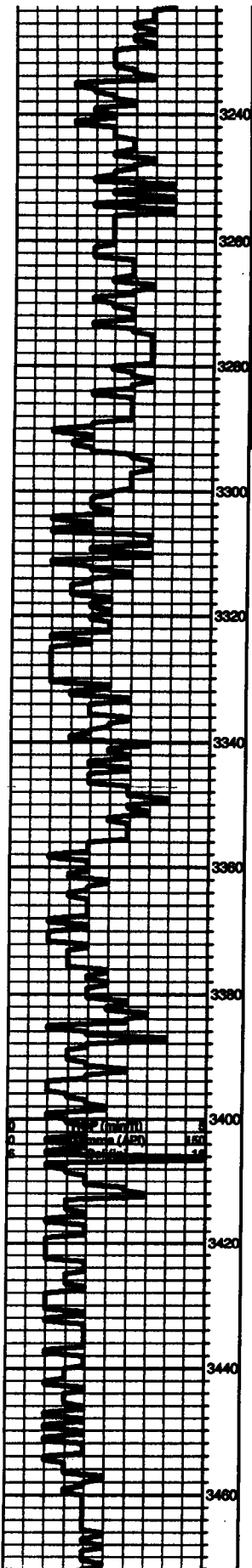
Ls-crm/tan, fxdn, few fossils, poor vis por, slightly chalky

Douglas 2940.0 (-1167.0) -1167.0

Shale-gry/grm soft

Shale-gry/grm/brown soft





s-crm/tan, fine, fossils, poor vis por, chalky, cherty

Ls-tan/gry, fxdn, ool/fossils, poor vis por, shale-gry/grn/bik carbon chert-tan/crm

s-crm/tan, fxdn fossils, poor vis por, chert-A/A

Ls-A/A

Ls-crm/tan, fxdn, few fossils, slightly ool, poor vis por, chalky

Arbuckle 3279.0 (-1506.0) -1510.0

Dol-wht/crm, f-med xdn, few rhomb xdn, poor iner xdn por, dark brown to black stains, odor, Trace show of oil

Dol-wht/crm/tan, f-med rhomb xdn, poor to fair iner xdn to finely vug por, black stains, TrSFO, fair odor

Dol-crm/wht, f-med rhomb xdn, poor iner xdn to finely vug por, trace black stains, NSFO, faint odor, pyritic in part, chert-boney wht/crm

A/A Chert-wht/crm

Dol-wht/crm, f-med rhmb xdn, dense, poor iner xdn por, chert- A/A pyrite

A/A

Dol-wht/tan, fine to med xdn, dense, poor to fair iner xdn por, trace black stains, NSFO, chert-boney wht/tan/gry

A/A Dense, Chert-boney wht/crm

Dol-tan/crm, f-med xdn, dense, poor iner xdn por, trace black stains, NSFO, chert- A/A

Dol- A/A

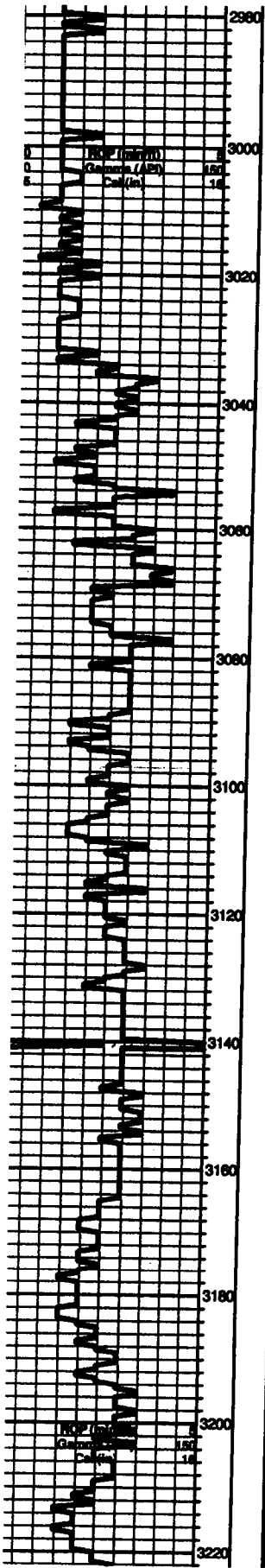
Dol-tan/crm, f-med xdn, few rhomb, poor iner xdn to finely vug por, slightly chalky, chert-boney wht/crm

A/A

DST #1 3252-3292
30-30-30-30
IF: Weak 1" blow
Recovery:
5' mud
Pressures:
ISIP 17 PSI
FSIP 26 PSI
IFP 15-17 PSI
FFP 17-18 PSI
HSH 1630-1530 PSI

DST #2 3252-3300
30-30-30-30
IF: Built to 1 1/2"
Recovery:
5' mud
Pressures:
ISIP 73 pai
FSIP 56 pai
IFP 16-18 pai
FFP 18-19 pai
HSH 1630-1540 pai

	Total Gas (units)	(%)
0	0	0
0	0	0
0	0	0
0	0	0
0	0	0



A/A

Shale-gry/grn/maroon/brown

A/A

Shale- A/A

Brown Lime 3034.0 (-1261.0) -1269.0

Ls-tan/buff, fxdn, dense, fossils, poor vis por
Shale-gry/grn

Lansing 3053.0 (-1280.0) -1277.0

Ls-crm/wht/lt grym fxdn, ool/fossils, dense,
poor vis por, chalky

Ls-crm/tan/lt gry, fxdn, ool/fossils, poor
scattered iner xin por, black stains? NSFO, no
odor, slightly chalky

Ls-crm/tan, fxdn, ool, poor ppr to iner xin por,
dark brwon to black stains, NSFO, faint odor,
chalky

Ls-crm/tan, fxdn, poor vispor, slightly chalky,
questionable black stains?

Ls-crm/tan/lt gry, fossils/ool, poor scattered
sub oom por, black stains, chalky, NSFO,

Ls-crm/tan, fxdn, fossils, poor ppt to iner xin
por, chalky, scattered black stains, NSFO, no odor

Ls-crm/tan, fxdn, ool/fossils, scattered poor ppt
por, chalky

Ls-crm/tan, fxdn, ool/fossils, poor scattered por,
chalky

Ls-crm/tan, fxdn, ool, sub oom por, black stains,
chalky, NSFO Trace black carbon shale

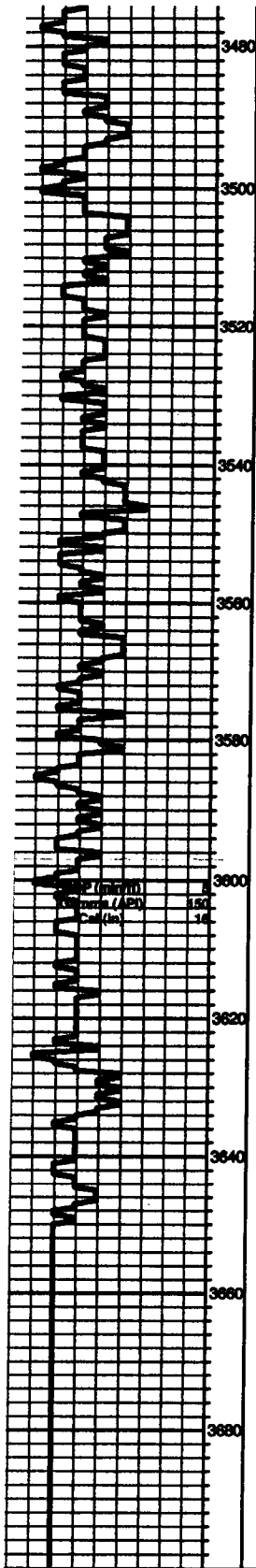
A/A Scattered sub oom por Shale-gry

Ls-crm/tan, fxdn, dense, poor vis por, few
ool/fossils,

Ls-lt gry/tan, fxdn, ool/fossils, poor scattered
iner xin por, cherty,

0	Total Gas (ml/g)	100
0	C1 (ml/g)	100
0	C2 (ml/g)	100
0	C3 (ml/g)	100
0	C4 (ml/g)	100

0	Total Gas (ml/g)	100
0	C1 (ml/g)	100
0	C2 (ml/g)	100
0	C3 (ml/g)	100
0	C4 (ml/g)	100



Dol-tan/crm/buff, f-med xln, dense, poor to fair inner xln por, chert-boney wht/crm/tan, chalky

A/A

Dol-wht/crm, f-med xln, dense, poor to fair inner xln por, chert-A/A

Dol-tan/buff, f-med xln, dense, poor vis por, chert A/A

Dol-tan/buff, f-xln, poor to fair inner xln por, chert- dense, ool? 1 piece w/golden brown stain?

Dol-wht/tan, f-med rhomb xln, poor to fair inner xln to finely vug por, dense, pyrite, chalky, chert- A/A

A/A

0	Total Gas (inches)	100
0	C1 (inches)	100
0	C2 (inches)	100
0	C3 (inches)	100
0	C4 (inches)	100

Dol-buff/tan, f-med rhomb xln, poor vis por, dense, cherty, pyrite

A/A Few sandy

Dol-crm/tan/buff, fine xln, sandy, poor vis por, cherty, chalky pyrite

3680