

LINN OPERATING INC. FIRST STATE BANK
 OF LARNED #6 ATU-355
 222' FNL
 210' FEL
 NE/4 OF NE/4 OF NE/4 OF NE/4 OF
 SECTION 29, T-31-S, R-39-W
 LATITUDE: 37°19'46.87405" N
 LONGITUDE: 101°34'28.59647" W
 GROUND ELEVATION: 3233.7'



Keller
 Surveying &
 Mapping

2330 B LAKEVIEW DRIVE
 AMARILLO, TEXAS 79109
 PH: (806) 418-6253

DRAWN BY: JOK

APPROVED BY: JOK

SCALE: 1" = 200'

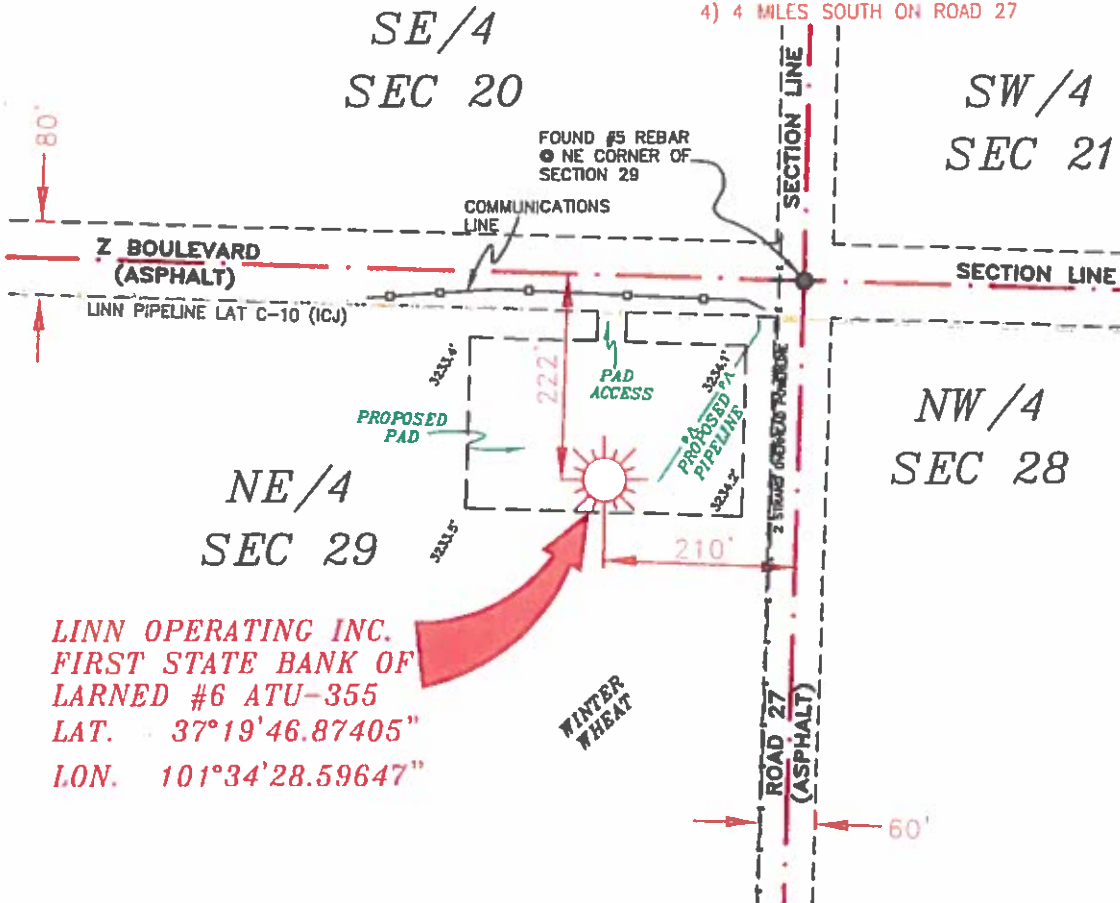
DATE: 4/27/14

LINN
 Energy

2225 W. OKLAHOMA AVE.
 ULYSSES KANSAS 67880
 PH: (620) 356-6940
 FAX: (620) 356-6950

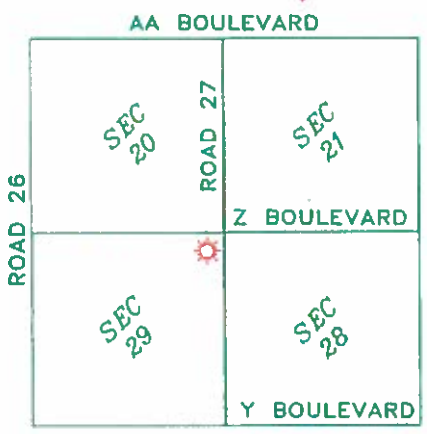
DRIVING DIRECTIONS:

- BEGINNING AT INTERSECTION OF US HWY 160 & HWY 25
- 1) 11 MILES WEST ON US HWY 160
 - 2) 13 MILES SOUTH ON BIG BOW GRADE
 - 3) 0.75 MILES WEST ON DD BOULEVARD
 - 4) 4 MILES SOUTH ON ROAD 27



LINN OPERATING INC.
 FIRST STATE BANK OF
 LARNED #6 ATU-355
 LAT. 37°19'46.87405"
 LON. 101°34'28.59647"

- NOTES:**
- 1) THIS PLAN DOES NOT REPRESENT A TRUE BOUNDARY SURVEY. THE FOOTINGS AND TIES SHOWN ARE FROM LINES OF OCCUPATION WHICH MAY NOT BE ACTUAL PROPERTY LINES.
 - 2) CONTRACTOR TO CONTACT ONE-CALL FOR FOREIGN UTILITY LOCATIONS PRIOR TO ANY EXCAVATION OR CONSTRUCTION.
 - 3) 140' 27' LAT-LONG



T-31-S, R-39-W
 MORTON COUNTY, KANSAS



JOHN DAVID KELLER, L.S. NO. 1518

LINN OPERATING INC.
FIRST STATE BANK OF
LARNED #6 ATU-355
 SECTIONS 20, 21, 28 & 29,
 T-31-S, R-39-W
 MORTON COUNTY, KANSAS

PLAT AND CERTIFICATION OF ACREAGE ATTRIBUTABLE TO A GAS WELL

Kansas Corporation Commission, Conservation Division
Finney State Office Building, 130 South Market, Room 2078
Wichita, Kansas 67202

API NUMBER 15-

LOCATION OF WELL: COUNTY Morton

OPERATOR LINN Operating, Inc.

222 N feet from south/north line of section

LEASE First State Bank of Larned

210 E feet from east / west line of section

WELL NUMBER 6 ATU-355

FIELD Hugoton-Panoma

SECTION 29 TWP 31 (S) RG 39W E/W

NUMBER OF ACRES ATTRIBUTABLE TO WELL 640

IS SECTION X REGULAR or IRREGULAR

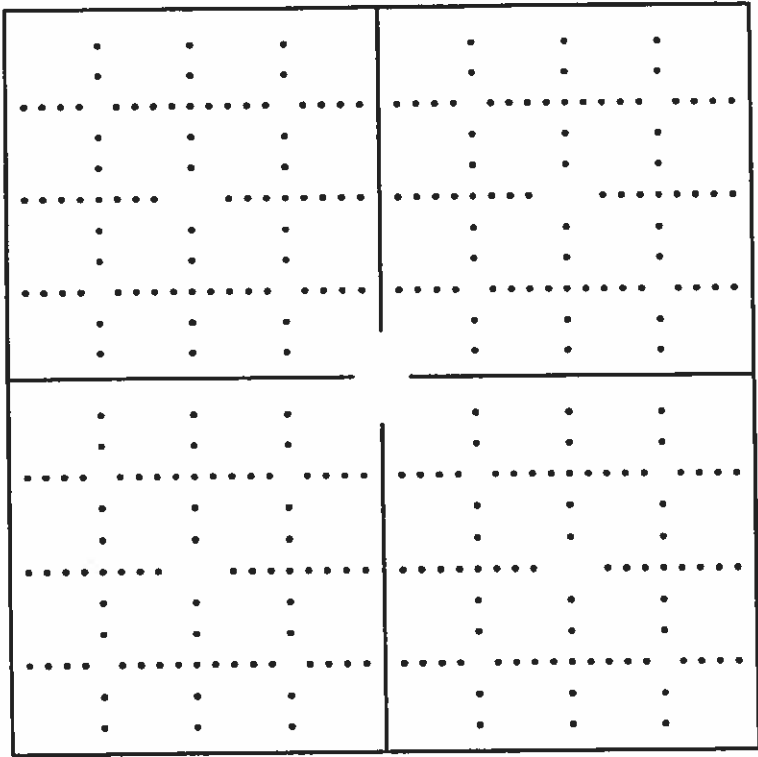
QTR/QTR/QTR OF ACREAGE NE - NE - NE

IF SECTION IS IRREGULAR, LOCATE WELL FROM

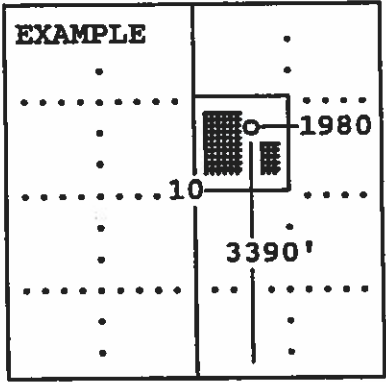
NEAREST CORNER BOUNDARY. (check line below)

Section corner used: NE NW SE SW

(Show the location of the well and shade attributable acreage for prorated or spaced wells).
(Show the footage to the nearest lease or unit boundary line; and show footage to the nearest common source supply well).



See attached map



SEWARD CO.

The undersigned hereby certifies as Regulatory Compliance Advisor (title) for LINN Operating, Inc. (Co.), a duly authorized agent, that all

information shown hereon is true and correct to the best of my knowledge and belief, that all acreage claimed attributable to the well named herein is held by production from that well and hereby make application for an allowable to be assigned to the well upon the filing of this form and the State test, whichever is later.

Signature [Handwritten Signature]

Subscribed and sworn to before me on this 29th day of May, 19 2014

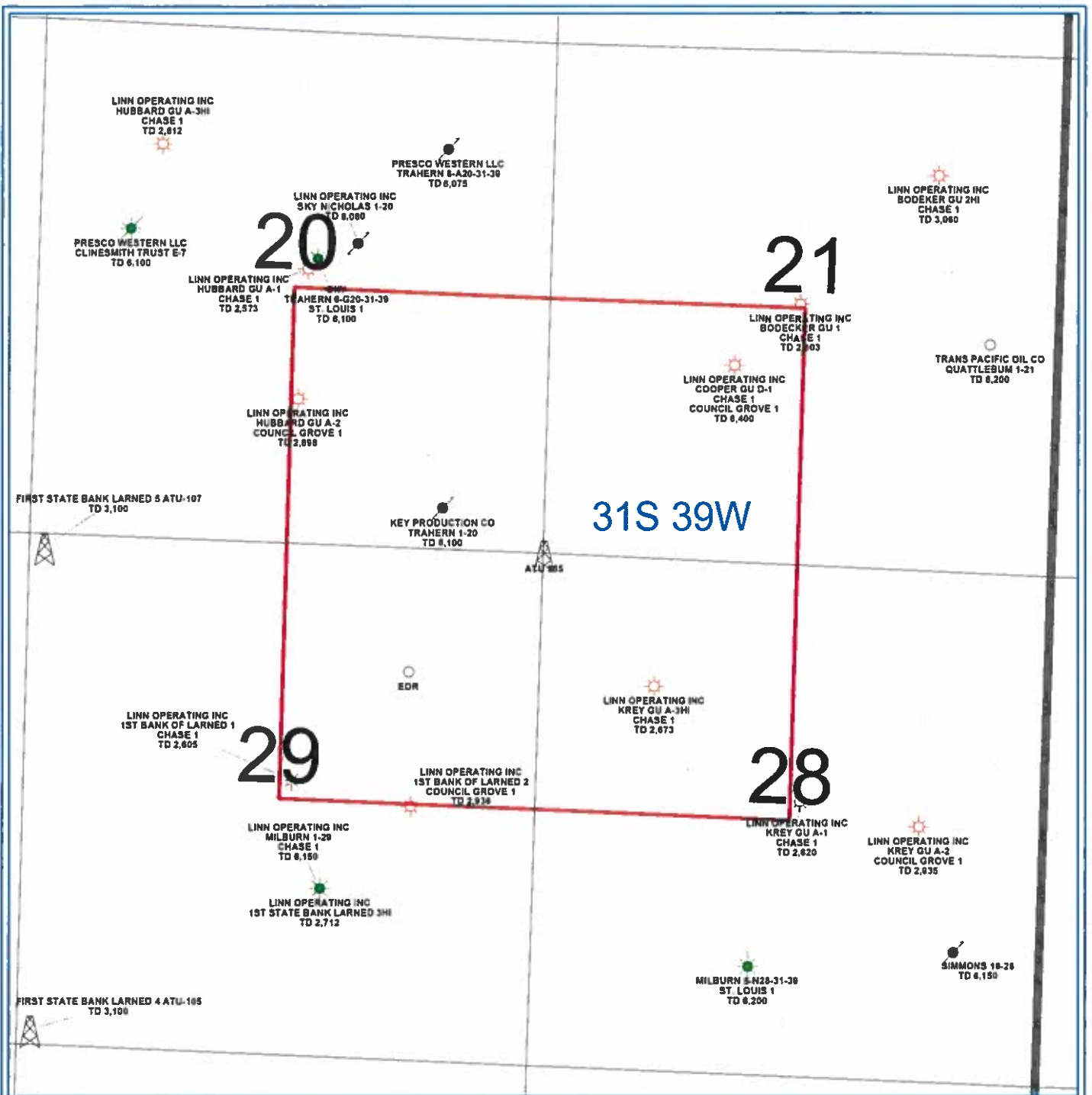
[Handwritten Signature]

Notary Public

My Commission expires



FORM CG-8 (12/94)



PETRA 10/23/2013 1 31 09 PM

LINN Operating Inc
Hugoton Kansas
ATU 355
Morton Co. 31S - 39W
 0 1,457 FEET
WELL SYMBOLS ATU Well Location Gas Well Oil and Gas Well Plugged and Abandoned Plugged and Abandoned Oil and Gas Well Suspended Oil and Gas Well LOCATION