

OPERATOR

Company: MUSTANG ENERGY CORPORATION
 Address: PO BOX 1121
 HAYS, KANSAS 67601

Contact Geologist: ROD BRIN
 Contact Phone Nbr: 785-623-0533
 Well Name: KLEWENO # 2-15
 Location: NE SE SW SE Sec.15-19s-22w
 Pool: NE SE SW SE Sec.15-19s-22w
 State: KANSAS

API: 15-135-25,752-00-00
 Field: SCHABEN WEST
 Country: USA

Scale 1:240 Imperial

Well Name: KLEWENO # 2-15
 Surface Location: NE SE SW SE Sec.15-19s-22w
 Bottom Location:
 API: 15-135-25,752-00-00
 License Number: 33922
 Spud Date: 3/27/2014
 Region: NESS COUNTY
 Drilling Completed: 4/1/2014
 Surface Coordinates: 440' FSL & 1510' FEL
 Bottom Hole Coordinates:
 Ground Elevation: 2192.00ft
 K.B. Elevation: 2200.00ft
 Logged Interval: 0.00ft
 Total Depth: 4337.00ft
 Formation: MISSISSIPPI
 Drilling Fluid Type: CHEMICAL/FRESH WATER GEL

Time: 9:00 AM
 Time: 10:45 PM
 To: 0.00ft

SURFACE CO-ORDINATES

Well Type: Vertical
 Longitude: -99.7377532
 N/S Co-ord: 440' FSL
 E/W Co-ord: 1510' FEL

Latitude: 38.3939043

LOGGED BY

Company: SOLUTIONS CONSULTING, INC.
 Address: 108 W 35TH
 HAYS, KS 67601

Phone Nbr: (785) 639-1337
 Logged By: GEOLOGIST
 Name: HERB DEINES

CONTRACTOR

Contractor: DISCOVERY DRILLING, INC.
 Rig #: 1
 Rig Type: MUD ROTARY
 Spud Date: 3/27/2014
 TD Date: 4/1/2014
 Rig Release: 4/2/2014

Time: 9:00 AM
 Time: 10:45 PM
 Time: 5:00 PM

ELEVATIONS

K.B. Elevation: 2200.00ft
 K.B. to Ground: 8.00ft

Ground Elevation: 2192.00ft

NOTES

RECOMMENDATION TO PLUG AND ABANDON WELL BASED ON NEGATIVE RESULTS OF TWO DRILL STEM TESTS AND LACK OF PERMEABILITY IN THE MISSISSIPPI DOLOMITE.

NO OPEN HOLE LOGS WERE RAN ON THIS WELL SINCE PRIMARY PRODUCTIVE ZONE COVERED BY TWO DRILL STEM TESTS.

DRILL STEM TESTING BY TRILOBITE TESTING INC: TWO (2) CONVENTIONAL TESTS


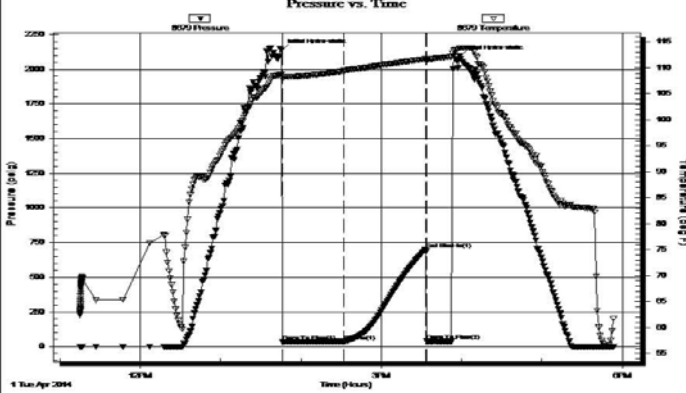
FORMATION TOPS COMPARISON AND CHRONOLOGY OF DAILY ACTIVITY

	KLEWENO # 2-15	KLEWENO # 1-15	RAHM # 1
	NE SE SW SE	W2 SE SE SE	NE NE
	SEC.15-19S-22W	SEC.15-19-22W	SEC.22-19-22W
	2192'GL 2200'KB	KB 2227'	KB 2225'
<u>FORMATION</u>	<u>SAMPLE TOPS</u>	<u>LOG TOPS</u>	<u>LOG TOPS</u>
Anhydrite	1463 +737	+ 743	+ 743
B-Anhydrite	1497 +703	+ 706	+ 707
Heebner Sh.	3666-1466	-1467	-1467
LKC	3716-1516	-1515	-1514
BKC	4036-1836	-1839	-1825
Pawnee	4134-1934	-1937	-1935
Ft Scott	4214-2014	-2018	-2012
Cherokee Sh.	4235-2035	-2038	-2032
Reworked Miss.	4320-2120		
Mississippi	4326-2126	-2115	-2104

SUMMARY OF DAILY ACTIVITY

- 3-27-14 RU, Spud 9:00 AM, set 8 5/8" surface casing to 215.3' w/ 150sxs
Common 2%Gel 3%CC, slope 1/8 degree, drill plug 10:30PM
- 3-28-14 1138', drilling
- 3-29-14 2555', drilling
- 3-30-14 3330', drilling, displaced at 3445'
- 3-31-14 3840', drilling
- 4-01-14 4330', drilling, CFS 4328', CFS 4330', short trip 22 stands, TOWB,
DST # 1 4262' to 4330, TIWB, CFS 4335', CFS 4337', DST # 2 4328' to
4337'
- 4-02-14 4337', finish DST # 2, decision to P&A

DST # 1 4262' TO 4330' MISSISSIPPI


	DRILL STEM TEST REPORT																																
	Mustang energy corp. P.O. BOX 1121 HAYS KS. 67601 ATTN: HERB DEINES / ROD BR	SEC. 15 - 19 s. - 22 w./ Ness Kleweno # 2 - 15 Job Ticket: 56172 DST#: 1 Test Start: 2014.04.01 @ 11:15:00																															
GENERAL INFORMATION:																																	
Formation: Mississippi Deviated: No Whipstock: ft (KB) Time Tool Opened: 13:46:30 Time Test Ended: 17:54:00		Test Type: Conventional Bottom Hole (Initial) Tester: Bob Hamel Unit No: 67																															
Interval: 4262.00 ft (KB) To 4330.00 ft (KB) (TVD) Total Depth: 4330.00 ft (KB) (TVD) Hole Diameter: 7.88 inches Hole Condition: Fair		Reference Elevations: 4262.00 ft (KB) 4255.00 ft (CF) KB to GR/CF: 7.00 ft																															
Serial #: 8679 Inside Press@RunDepth: 36.60 psig @ 4296.00 ft (KB) Start Date: 2014.04.01 End Date: 2014.04.01 Start Time: 11:15:01 End Time: 17:54:00		Capacity: 8000.00 psig Last Calib.: 1899.12.30 Time On Btm: 2014.04.01 @ 13:45:30 Time Off Btm: 2014.04.01 @ 15:58:30																															
TEST COMMENT: I.F. - 45 - 1/2" INT. BLOW BUILT TO (1" IN 45 MIN.) I.S.I - 60 - W.S.B.B. @ 60 MIN. F.F. - 15 - 1/4" INT. BLOW NO BUILD (PULLED IT @ 15 MIN.) F.S.I - NO FINAL SHUT IN.																																	
Pressure vs. Time 		PRESSURE SUMMARY																															
		<table border="1" style="width: 100%; border-collapse: collapse;"> <thead> <tr> <th>Time (Min.)</th> <th>Pressure (psig)</th> <th>Temp (deg F)</th> <th>Annotation</th> </tr> </thead> <tbody> <tr><td>0</td><td>2138.73</td><td>108.76</td><td>Initial Hydro-static</td></tr> <tr><td>1</td><td>33.07</td><td>107.91</td><td>Open To Flow (1)</td></tr> <tr><td>47</td><td>36.60</td><td>109.42</td><td>Shut-in(1)</td></tr> <tr><td>108</td><td>698.56</td><td>111.68</td><td>End Shut-in(1)</td></tr> <tr><td>109</td><td>38.27</td><td>111.49</td><td>Open To Flow (2)</td></tr> <tr><td>133</td><td>2095.05</td><td>113.83</td><td>Final Hydro-static</td></tr> </tbody> </table>	Time (Min.)	Pressure (psig)	Temp (deg F)	Annotation	0	2138.73	108.76	Initial Hydro-static	1	33.07	107.91	Open To Flow (1)	47	36.60	109.42	Shut-in(1)	108	698.56	111.68	End Shut-in(1)	109	38.27	111.49	Open To Flow (2)	133	2095.05	113.83	Final Hydro-static			
Time (Min.)	Pressure (psig)	Temp (deg F)	Annotation																														
0	2138.73	108.76	Initial Hydro-static																														
1	33.07	107.91	Open To Flow (1)																														
47	36.60	109.42	Shut-in(1)																														
108	698.56	111.68	End Shut-in(1)																														
109	38.27	111.49	Open To Flow (2)																														
133	2095.05	113.83	Final Hydro-static																														
Recovery		Gas Rates																															
<table border="1" style="width: 100%; border-collapse: collapse;"> <thead> <tr> <th>Length (ft)</th> <th>Description</th> <th>Volume (bbl)</th> </tr> </thead> <tbody> <tr> <td>15.00</td> <td>S.O.S.M. MUD100% SHOW OF FREE OIL</td> <td>0.07 OIL</td> </tr> <tr><td> </td><td> </td><td> </td></tr> <tr><td> </td><td> </td><td> </td></tr> <tr><td> </td><td> </td><td> </td></tr> <tr><td> </td><td> </td><td> </td></tr> </tbody> </table>		Length (ft)	Description	Volume (bbl)	15.00	S.O.S.M. MUD100% SHOW OF FREE OIL	0.07 OIL													<table border="1" style="width: 100%; border-collapse: collapse;"> <thead> <tr> <th>Choke (inches)</th> <th>Pressure (psig)</th> <th>Gas Rate (Mc/d)</th> </tr> </thead> <tbody> <tr><td> </td><td> </td><td> </td></tr> <tr><td> </td><td> </td><td> </td></tr> <tr><td> </td><td> </td><td> </td></tr> </tbody> </table>		Choke (inches)	Pressure (psig)	Gas Rate (Mc/d)									
Length (ft)	Description	Volume (bbl)																															
15.00	S.O.S.M. MUD100% SHOW OF FREE OIL	0.07 OIL																															
Choke (inches)	Pressure (psig)	Gas Rate (Mc/d)																															

Trilobite Testing, Inc

Ref. No: 56172

Printed: 2014.04.01 @ 21:30:07

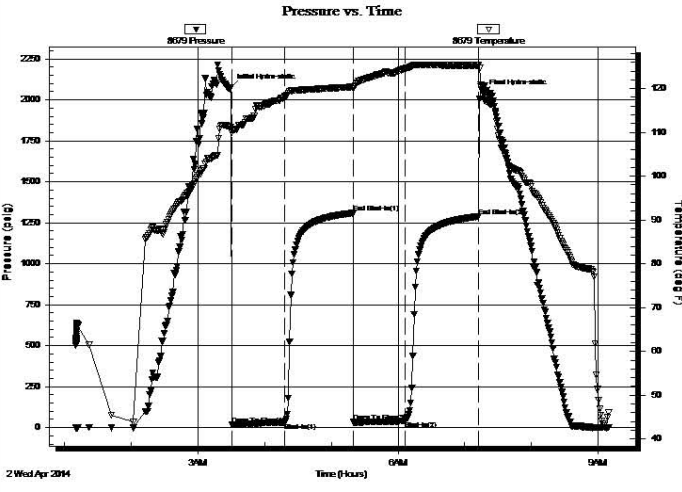
DST # 2 4328' TO 4337' MISSISSIPPI

	DRILL STEM TEST REPORT		
	Mustang energy corp. P.O. BOX 1121 HAYS KS. 67601 ATTN: HERB DEINES / ROD BR	SEC. 15 - 19 s. - 22 w./ Ness Kleweno # 2 - 15 Job Ticket: 56173 DST#: 2 Test Start: 2014.04.02 @ 01:10:00	
GENERAL INFORMATION:			
Formation: Mississippi			

Deviated: No Whipstock: ft (KB) Test Type: Conventional Bottom Hole (Reset)
 Time Tool Opened: 03:30:30 Tester: Bob Hamel
 Time Test Ended: 09:09:30 Unit No: 67
 Interval: 4328.00 ft (KB) To 4337.00 ft (KB) (TVD) Reference Elevations: 2200.00 ft (KB)
 Total Depth: 4330.00 ft (KB) (TVD) 2192.00 ft (CF)
 Hole Diameter: 7.88 inches Hole Condition: Fair KB to GR/CF: 8.00 ft

Serial #: 8679 Inside
 Press@RunDepth: 39.74 psig @ 4329.00 ft (KB) Capacity: 8000.00 psig
 Start Date: 2014.04.02 End Date: 2014.04.02 Last Calib.: 2014.04.02
 Start Time: 01:10:01 End Time: 09:09:30 Time On Btm: 2014.04.02 @ 03:29:30
 Time Off Btm: 2014.04.02 @ 07:16:30

TEST COMMENT: I.F. - 45 - 1/4" INT. BLOW BUILT TO(2 1/2" IN 45 MIN.)
 I.S.I. - 60 - W.S.B.B. @ 60 MIN.
 F.F. - 45 - 1/4" INT. BLOW BUILT TO(1" IN 45 MIN.)
 F.S.I. 60 - NO B.B.



Time (Min.)	Pressure (psig)	Temp (deg F)	Annotation
0	2074.20	111.19	Initial Hydro-static
1	16.56	109.87	Open To Flow (1)
49	30.56	118.03	Shut-In(1)
110	1308.80	120.36	End Shut-In(1)
111	33.07	120.03	Open To Flow (2)
157	39.74	124.53	Shut-In(2)
223	1288.47	125.28	End Shut-In(2)
227	2041.18	119.72	Final Hydro-static

Length (ft)	Description	Volume (bbl)
56.00	S,W,C,G,M, 5%WTR 95%MUD SLIGHT G/0.49MELL	
2.00	CLEAN OIL 100%	0.03

* Recovery from multiple tests

Choke (inches)	Pressure (psig)	Gas Rate (Mcf/d)

Trilobite Testing, Inc Ref. No: 56173 Printed: 2014.04.02 @ 09:57:11

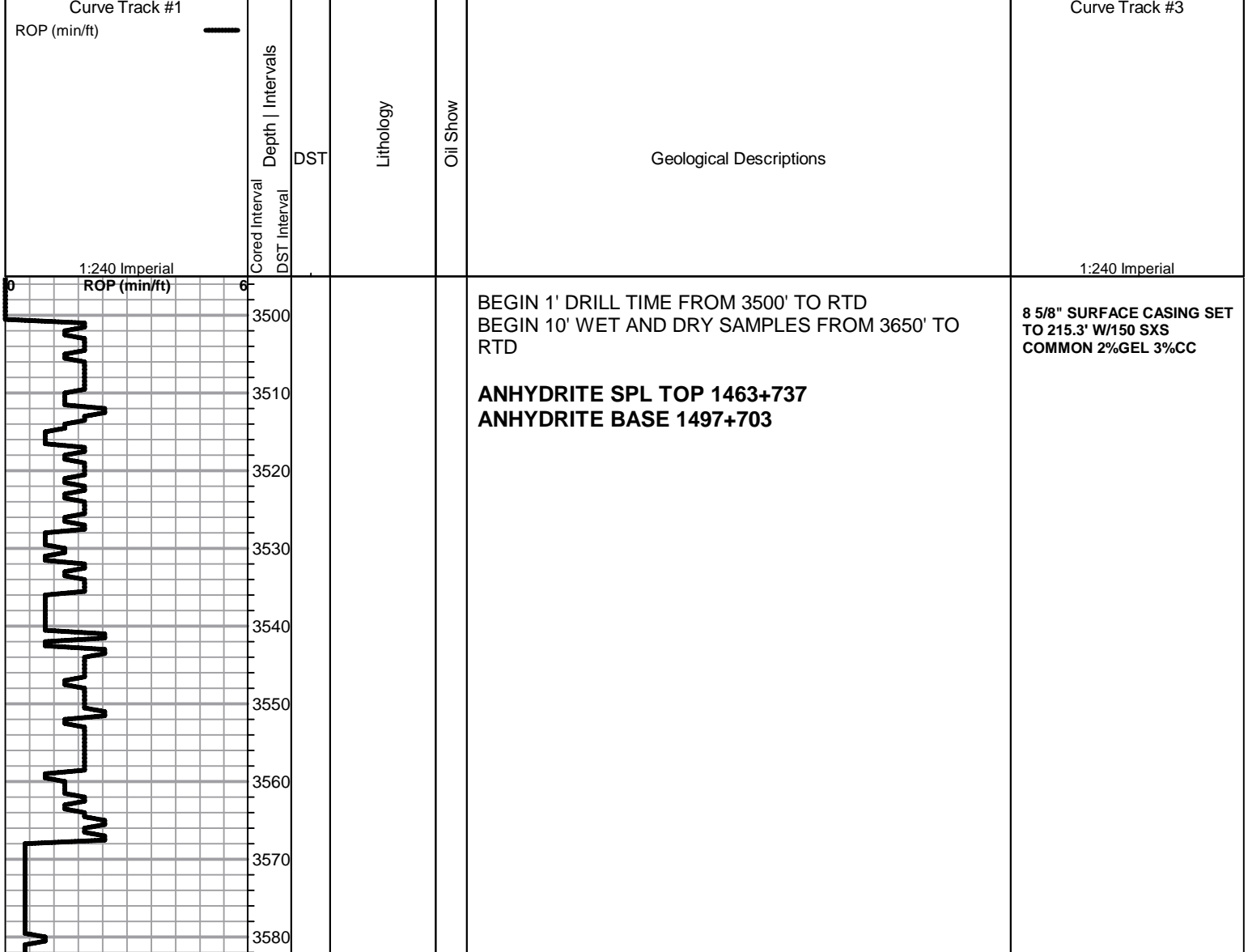
ROCK TYPES

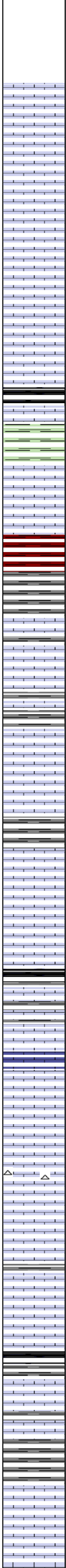
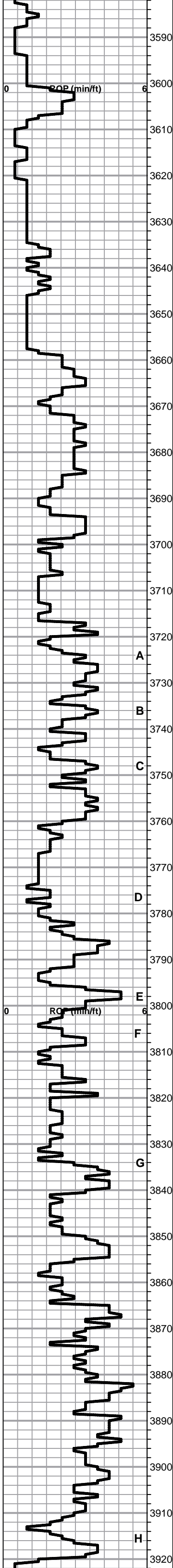
Chtcongl	Lmst fw<7	shale, grn	shale, red	CglSandy
Dolprim	Lmst fw7>	shale, gry	Shcol	
Dolsec	Lscongl	Carbon Sh	Ss	

ACCESSORIES

MINERAL
 ▲ Chert White

Printed by GEOstrip VC Striplog version 4.0.7.0 (www.grsi.ca)





Lime, med-dark gray, fnxln-granular, slight bedded chalk

HEEBNER SHALE SPL 3666-1466

Shale, black carbonaceous, fissile, blocky
Lime, tan-lt brn, fn-vfxln, hard on crush

Shale, lt gray-lime green, soft blocky

○ Lime, crm-tan, fnxln-granular, spotty lt stain, NFO, no odor

Lime, white, granular-fnxln, slight bedded chalk

Shale, red-brn,

LKC SPL 3716-1516

Lime, crm-lt brn, fnxln, hard on crush

Lime, tan fnxln-granular in part, slight chalk, slightly fossiliferous

Lime, tan-med brn, fnxln

Lime, med brn, fnxln-granular in part, slight mottling near shale boundary

Lime, crm, bedded chalk

Lime, crm-lt-med brn, fnxln-granular, bedded chalk

Lime, crm-tan, granular, bedded chalk

Lime, crm, fn-vfxln, hard on crush

Shale, gray-black carbonaceous, blocky
Lime, lt gray, fn-vfxln

Lime, crm-lt brn, fnxln-granular

Lime, crm-lt-med brn, fnxln-granular, bedded chalk in part

Lime, crm, fnxln, bedded chalk

Lime, crm-tan, granular, bedded chalk

△ Lime, tan-lt brn, fn-vfxln, white chert in part

Lime, crm-lt brn, fnxln-granular, slight bedded chalk

Lime, crm-lt brn-grayish brn, fnxln-granular

Lime, crm-lt brn, fn-vfxln

Shale, gray-black carbonaceous, blocky

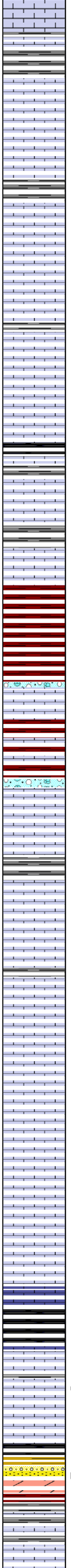
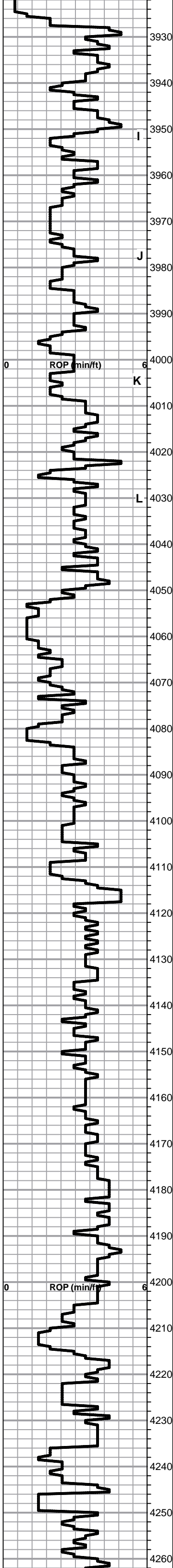
Lime, crm-tan, slightly fossiliferous

Lime, white-lt gray, fn-vfxln

Shale, lt gray, soft blocky

Lime, tan-lt gray, fnxln-granular in part

Lime, crm-tan, fnxln-granular, chalk in part



Lime, crm-tan, fn-vfxln, hard on crush, chalk in part

Lime, crm-tan, fn-vfxln, bedded chalk in part

Lime, lt brn, fn-vfxln, hard on crush

Lime, crm-tan, fnxln

Lime, fnxln-granular, chalk in part

Lime, crm-tan, fnxln-granular in part

Lime, crm-tan fnxln

Lime, crm-med brn, fnxln-granular in part

Lime, crm-tan, fnxln-granular, slight bedded chalk, few chips of dark brn lime, NS

Shale, black carbonaceous, blocky

Lime, lt-med brn, fnxln, hard on crush

Lime, lt brn, fnxln, chalk in part

BKC SPL 4036-1836

Shale, brn-black, soft blocky

Lime, tan-lt brn, fnxln, hard on crush

Shale, lt green, red, brn, soft blocky

Lime, tan-brn, fn-vfxln

Lime, tan-lt brn, fn-vfxln, scattered clastic material

Lime, clastic with red shale staining, fnxln

Lime, lt gray-lt brn, fn-vfxln

Shale, lt-dark gray, firm, blocky

Lime, lt brn, fnxln

Lime, crm-tan, fnxln

PAWNEE SPL 4134-1934

Lime, tan-lt brn, fnxln

Lime, tan, fnxln

Lime, lt brn, fnxln, hard on crush

Lime, lt gray, fnxln

Lime, brn-lt gray, fn-vfxln, hard on crush

Lime, lt-med gray, fnxln with increasing dark gray shale with depth

Lime, gray-black, fnxln

Shale, black carbonaceous, blocky

FT SCOTT 4214-2014

Lime, fn-micro xln

○ Lime, tan-lt brn, fn-vfxln, granular in part, fnxln with mostly fine inter xln porosity, spotty to sat stain, NFO, very lt to no detectable odor, does not appear well developed in spls.

CHEROKEE SHALE 4235-2035

■ Sandstone, quartz, friable, well sorted, subrounded, NFO, no odor, lite wet cut on crush only, dolomitic effervesence

Mix of fnxln lime and red-gray shales

Lime, lt brn, mostly fnxln, NS

1ST PLUG @1500' W/50 SXS
 2ND PLUG @780' W/80 SXS
 3RD PLUG @270' W/50 SXS
 4TH PLUG @60' W/20 SXS
 RATHOLE W/30 SXS
 MOUSEHOLE W/20 SXS

250 SXS 60/40 POS 4%GEL
 QUALITY OILWELL CEMENT

