

LINN OPERATING INC. O.E. JOSSERAND #5 ATU-153
 1175' FNL
 208' FWL
 NW/4 OF NW/4 OF
 SECTION 25, T-28-S, R-40-W
 LATITUDE: 37°35'18.31813" N
 LONGITUDE: 101°39'07.78418" W
 GROUND ELEVATION: 3242.1'



Keller
 Surveying &
 Mapping

2330 B LAKEVIEW DRIVE
 AMARILLO, TEXAS 79109
 PH: (806)418-5253

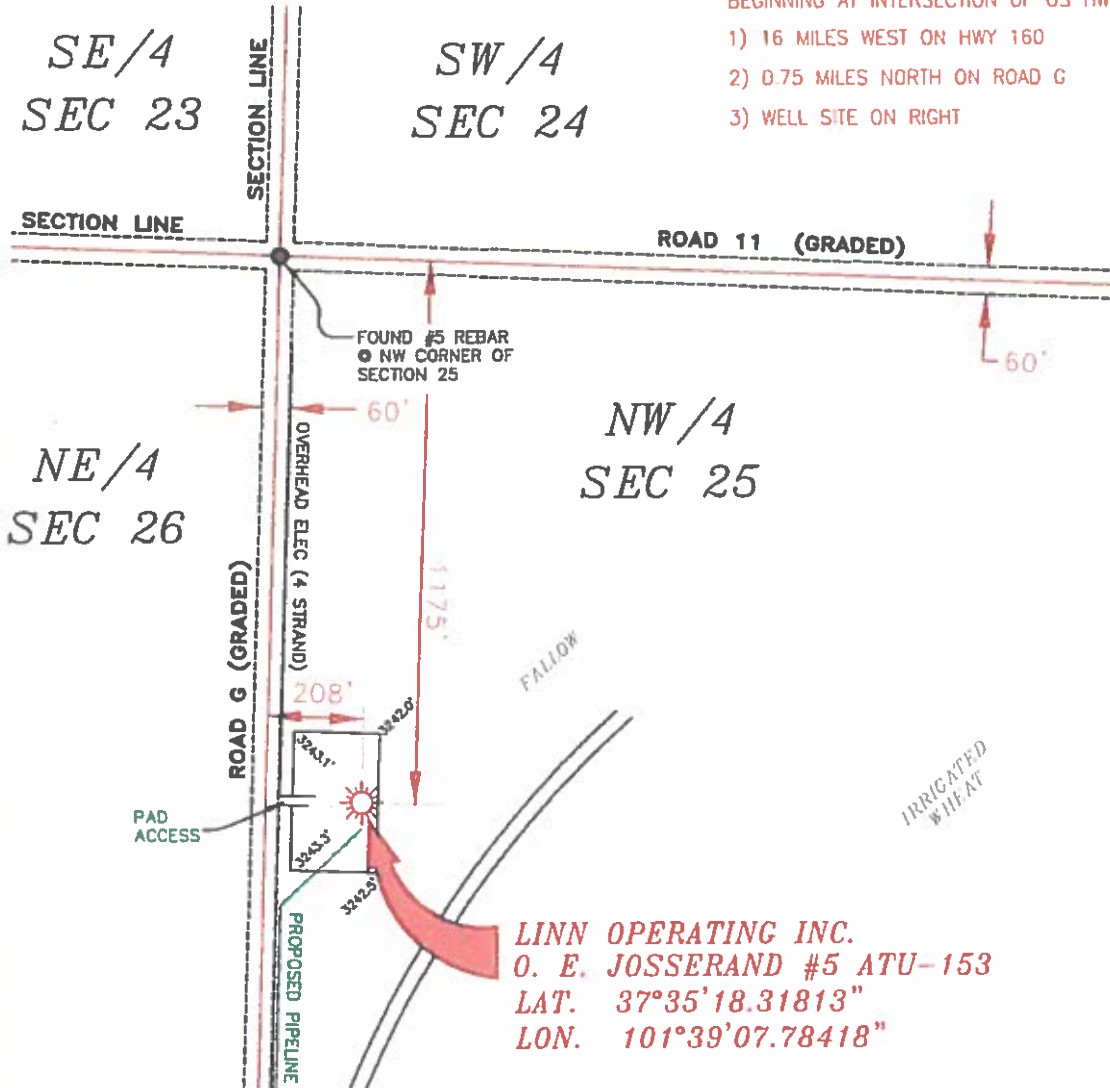
DRAWN BY: DMH
 APPROVED BY: JHM
 SCALE: 1" = 400'
 DATE: 5/4/13

LINN
 Energy

2725 N OKLAHOMA AVE
 ULYSSES, KANSAS 67880
 PH: (620)356-6940
 FAX: (620)356-6950

DRIVING DIRECTIONS:

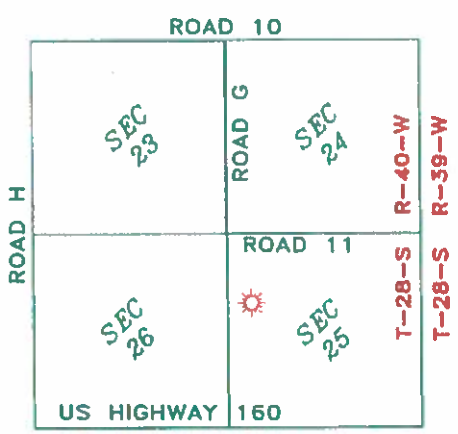
- BEGINNING AT INTERSECTION OF US HWY 160 & HWY 25
- 1) 16 MILES WEST ON HWY 160
 - 2) 0.75 MILES NORTH ON ROAD G
 - 3) WELL SITE ON RIGHT



LINN OPERATING INC.
O. E. JOSSERAND #5 ATU-153
LAT. 37°35'18.31813"
Lon. 101°39'07.78418"

NOTES:

- 1) THIS PLAN DOES NOT REPRESENT A TRUE BOUNDARY SURVEY. THE FOOTAGES AND TIES SHOWN ARE FROM PLATS OF OCCUPATION WHICH MAY NOT BE ACTUAL PROPERTY LINES.
- 2) CONTRACTOR TO CONTACT ONE-CALL FOR FURTHER UTILITY LOCATIONS PRIOR TO ANY EXCAVATION OR CONSTRUCTION.
- 3) NAD 83 LAT-LONG.



T-28-S, R-40-W
 STANTON COUNTY, KANSAS

Sheet 1 of 2

LINN OPERATING INC.
JOSSERAND #5 ATU-153
SECTIONS 23, 24, 25 & 26
T-28-S, R-40-W
STANTON COUNTY, KANSAS

PLAT AND CERTIFICATION OF ACREAGE ATTRIBUTABLE TO A GAS WELL

Kansas Corporation Commission, Conservation Division
 Finney State Office Building, 130 South Market, Room 2078
 Wichita, Kansas 67202

API NUMBER 15- _____

LOCATION OF WELL: COUNTY Stanton

OPERATOR LINN Operating, Inc.

1175 N feet from south/north line of section

LEASE O.E. Josserand

208 W feet from east / west line of section

WELL NUMBER 5 ATU-153

FIELD Hugoton-Panoma

SECTION 25 TWP 28 (S) RG 40W E/W

NUMBER OF ACRES ATTRIBUTABLE TO WELL 640

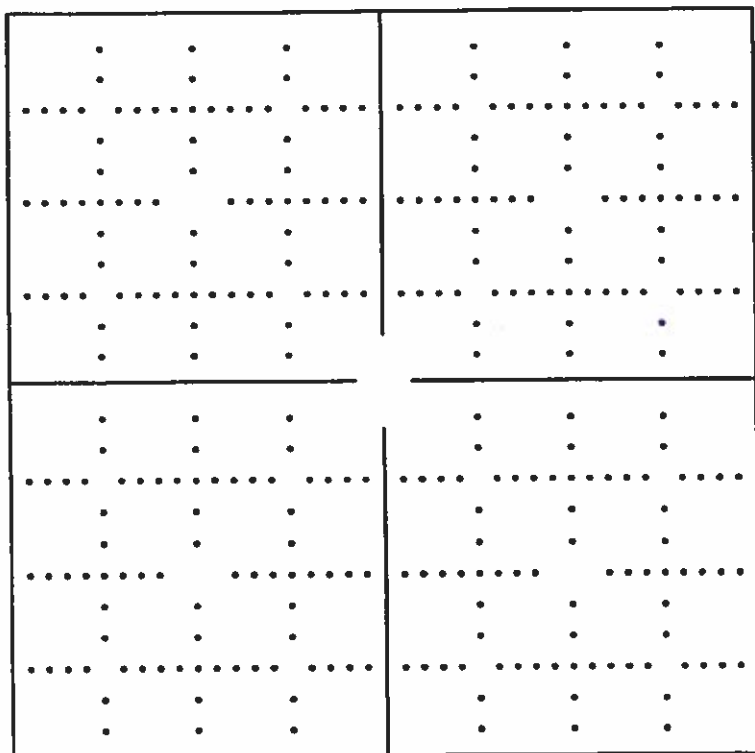
IS SECTION X REGULAR or _____ IRREGULAR

QTR/QTR/QTR OF ACREAGE _____ - NW - NW

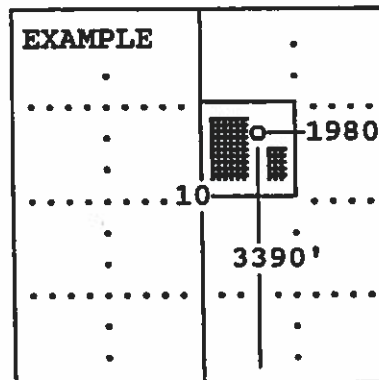
IF SECTION IS IRREGULAR, LOCATE WELL FROM NEAREST CORNER BOUNDARY. (check line below)

Section corner used: _____ NE _____ NW _____ SE _____ SW

(Show the location of the well and shade attributable acreage for prorated or spaced wells).
 (Show the footage to the nearest lease or unit boundary line; and show footage to the nearest common source supply well).



see attached map



The undersigned hereby certifies as Regulatory Compliance Advisor (title) for LINN Operating, Inc.

(Co.), a duly authorized agent, that all information shown hereon is true and correct to the best of my knowledge and belief, that all acreage claimed attributable to the well named herein is held by production from that well and hereby make application for an allowable to be assigned to the well upon the filing of this form and the State test, whichever is later.

Signature *Shawn Hierrey*

Subscribed and sworn to before me on this 29th day of May, 19 2014

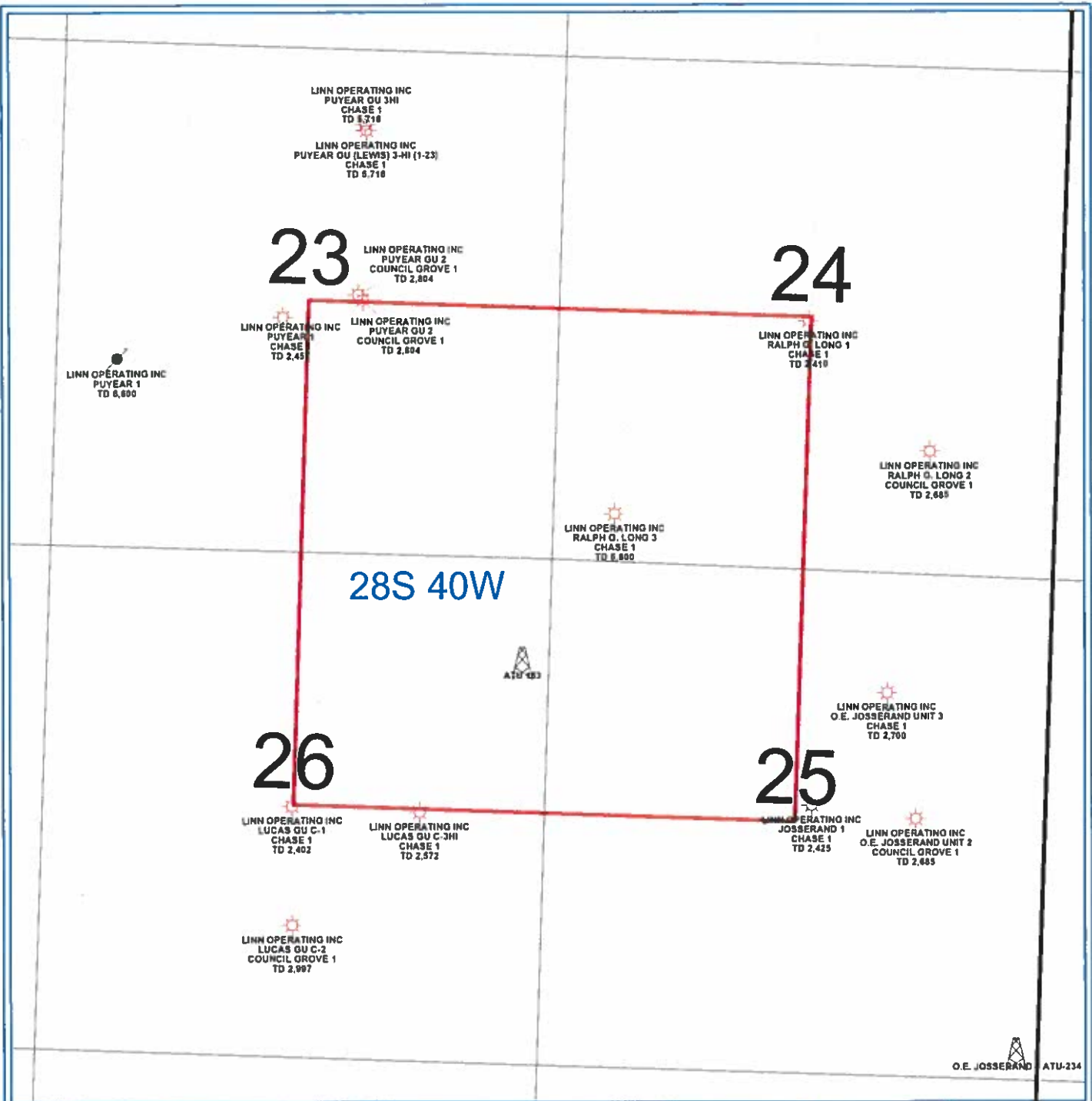
Mindy Potore



Notary Public

My Commission expires _____

FORM CG-8 (12/94)



PETRA 3/8/2014 1:34:08 PM

LINN Operating Inc
Hugoton Kansas
ATU 153
Stanton Co. 28S - 40W - 26
WELL SYMBOLS ATU Well Location Gas Well Plugged and Abandoned