



TRILOBITE TESTING, INC

DRILL STEM TEST REPORT

Woolsey Operating Co. LLC

12-35s-12w Barber Ks

125 N. Market ,Ste.1000
Wichita Ks.67202

Sternberger B-1

Job Ticket: 51800

DST#: 1

ATTN: Bill Klaver/ Joel Ge

Test Start: 2014.02.11 @ 05:19:16

GENERAL INFORMATION:

Formation: **Miss.**

Deviated: No Whipstock: ft (KB)

Time Tool Opened: 08:01:01

Time Test Ended: 14:41:16

Test Type: Conventional Bottom Hole (Initial)

Tester: Gary Pevoteaux

Unit No: 56

Interval: 4720.00 ft (KB) To 4855.00 ft (KB) (TVD)

Reference Elevations: 1369.00 ft (KB)

Total Depth: 4855.00 ft (KB) (TVD)

1357.00 ft (CF)

Hole Diameter: 7.88 inches Hole Condition: Fair

KB to GR/CF: 12.00 ft

Serial #: 8352 Inside

Press@RunDepth: 169.35 psig @ 4721.00 ft (KB)

Capacity: 8000.00 psig

Start Date: 2014.02.11

End Date:

2014.02.11

Last Calib.:

2014.02.11

Start Time: 05:19:21

End Time:

14:41:16

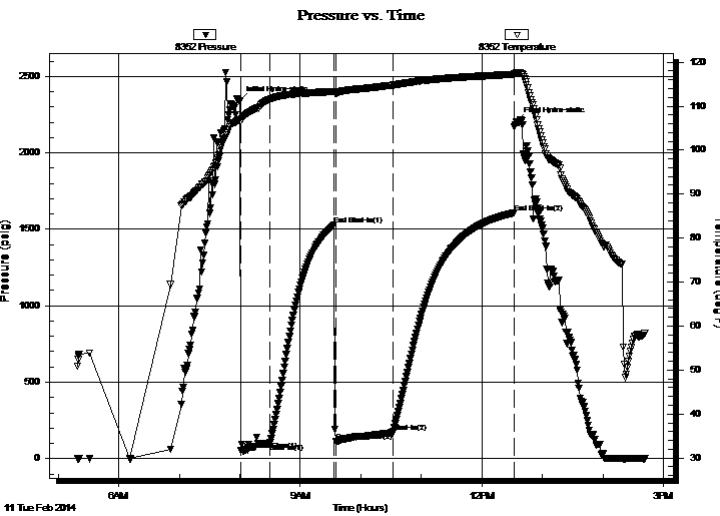
Time On Btm:

2014.02.11 @ 08:00:16

Time Off Btm:

2014.02.11 @ 12:34:16

TEST COMMENT: IF: Strong blow . B.O.B. in 1 min.
IS: Weak blow . 1/2 - 3".
FF: Strong blow . B.O.B. in 3 secs. GTS in 25 mins. (see gas flow report)
FS: Weak blow . 1/2 - 1".



PRESSURE SUMMARY

Time (Min.)	Pressure (psig)	Temp (deg F)	Annotation
0	2339.82	106.92	Initial Hydro-static
1	53.42	106.60	Open To Flow (1)
30	99.59	111.54	Shut-In(1)
94	1529.24	113.34	End Shut-In(1)
95	110.36	112.93	Open To Flow (2)
152	169.35	114.77	Shut-In(2)
272	1606.99	117.24	End Shut-In(2)
274	2201.45	117.53	Final Hydro-static

Recovery

Length (ft)	Description	Volume (bbl)
180.00	GOCM 11%g 11%o 78%m	0.89
150.00	GOCM 16%g 3%o 81%m	2.10

Gas Rates

	Choke (inches)	Pressure (psig)	Gas Rate (Mcf/d)
First Gas Rate	0.13	2.00	6.06
Last Gas Rate	0.13	4.00	6.81
Max. Gas Rate	0.13	4.00	6.81



**TRILOBITE
TESTING, INC**

DRILL STEM TEST REPORT

FLUID SUMMARY

Woolsey Operating Co. LLC

12-35s-12w Barber Ks

125 N. Market ,Ste.1000
Wichita Ks.67202

Sternberger B-1

Job Ticket: 51800

DST#: 1

ATTN: Bill Klaver/ Joel Ge

Test Start: 2014.02.11 @ 05:19:16

Mud and Cushion Information

Mud Type: Gel Chem

Cushion Type:

Oil API:

deg API

Mud Weight: 9.00 lb/gal

Cushion Length:

ft

Water Salinity:

2000 ppm

Viscosity: 61.00 sec/qt

Cushion Volume:

bbf

Water Loss: 7.99 in³

Gas Cushion Type:

Resistivity: 0.00 ohm.m

Gas Cushion Pressure:

psig

Salinity: 2000.00 ppm

Filter Cake: 0.20 inches

Recovery Information

Recovery Table

Length ft	Description	Volume bbf
180.00	GOCM 11%g 11%o 78%m	0.885
150.00	GOCM 16%g 3%o 81%m	2.104

Total Length: 330.00 ft

Total Volume: 2.989 bbf

Num Fluid Samples: 0

Num Gas Bombs: 0

Serial #: none

Laboratory Name:

Laboratory Location:

Recovery Comments:



**TRILOBITE
TESTING, INC.**

DRILL STEM TEST REPORT

GAS RATES

Woolsey Operating Co. LLC

12-35s-12w Barber Ks

125 N. Market ,Ste.1000
Wichita Ks.67202

Sternberger B-1

Job Ticket: 51800

DST#: 1

ATTN: Bill Klaver/ Joel Ge

Test Start: 2014.02.11 @ 05:19:16

Gas Rates Information

Temperature: 59 (deg F)
Relative Density: 0.65
Z Factor: 0.8

Gas Rates Table

Flow Period	Elapsed Time	Choke (inches)	Pressure (psig)	Gas Rate (Mcf/d)
2	30	0.13	2.00	6.06
2	40	0.13	3.00	6.44
2	50	0.13	4.00	6.81
2	60	0.13	4.00	6.81

