

**LINN OPERATING INC. HOHNER A-4 ATU-264**

200' FSL  
 290' FWL  
 SW/4 OF SW/4 OF SW/4 OF SW/4 OF  
 SECTION 22, T-27-S, R-38-W  
 LATITUDE: 37°40'44.09493" N  
 LONGITUDE: 101°28'15.71089" W  
 GROUND ELEVATION: 3110.7'



*Keller*  
 Surveying &  
 Mapping

2330 B LAKEVIEW DRIVE  
 AMARILLO, TEXAS 79109  
 PH: (806) 418-5253

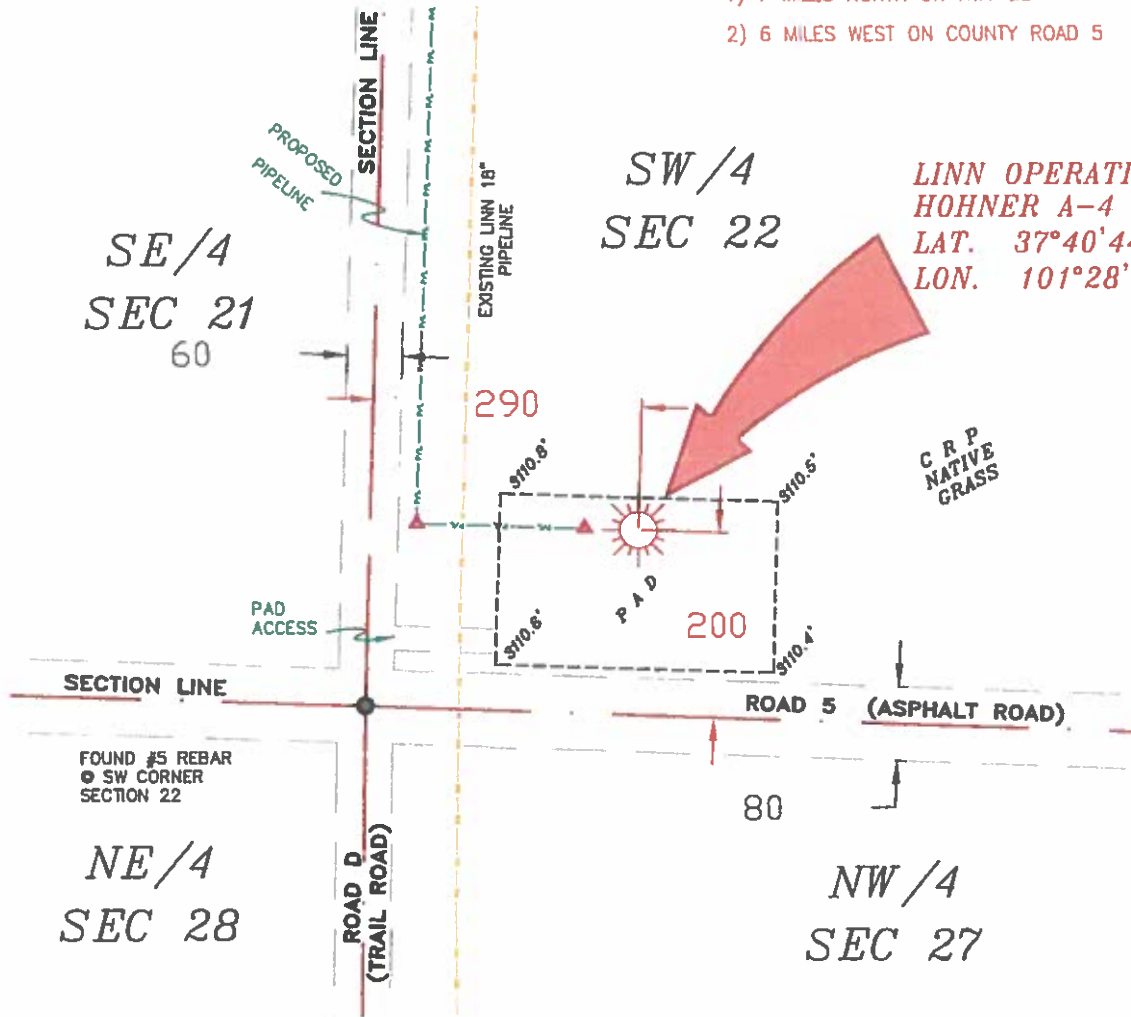
DRAWN BY: JOK  
 APPROVED BY: JOK  
 SCALE: 1" = 200'  
 DATE: 4/14/14



2225 W. OKLAHOMA AVE.  
 ULYSSES KANSAS 67880  
 PH: (620) 356-6940  
 FAX: (620) 356-6950

**DRIVING DIRECTIONS:**

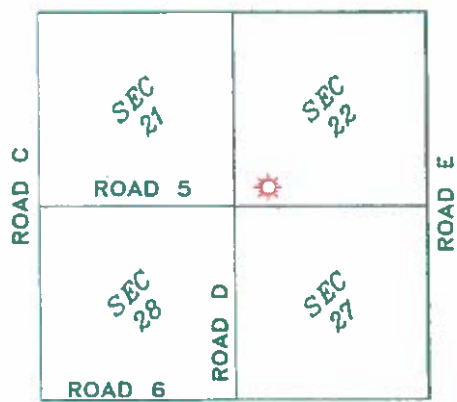
- BEGINNING AT INTERSECTION OF US HWY 160 & HWY 25
- 1) 7 MILES NORTH ON HWY 25
  - 2) 6 MILES WEST ON COUNTY ROAD 5



**LINN OPERATING INC.**  
 HOHNER A-4 ATU-264  
 LAT. 37°40'44.09493"  
 LON. 101°28'15.71089"

**NOTES:**

- 1) THIS PLAN DOES NOT REPRESENT A TRUE BOUNDARY SURVEY. THE FOOTINGS AND TIES SHOWN ARE FROM LINES OF OCCUPATION WHICH MAY NOT BE ACTUAL PROPERTY LINES.
- 2) CONTRACTOR TO CONTACT ONE-CALL FOR FOREIGN UTILITY LOCATIONS PRIOR TO ANY EXCAVATION OR CONSTRUCTION.
- 3) NAD 27 UTM-LONG



JOHN DAVID KELLER, L.S. NO. 1518

T-27-S, R-38-W  
 GRANT COUNTY, KANSAS

Sheet 1 of 2

**LINN OPERATING INC.**  
**HOHNER A-4 ATU-264**  
 SECTIONS 21, 22, 27 & 28  
 T-27-S, R-38-W  
 GRANT COUNTY, KANSAS

PLAT AND CERTIFICATION OF ACREAGE ATTRIBUTABLE TO A GAS WELL

Kansas Corporation Commission, Conservation Division
Finney State Office Building, 130 South Market, Room 2078
Wichita, Kansas 67202

API NUMBER 15-

LOCATION OF WELL: COUNTY Grant

OPERATOR LINN Operating, Inc.

LEASE Hohner

WELL NUMBER A-4 ATU-264

FIELD Hugoton-Panoma

200 S feet from south/north line of section
290 W feet from east / west line of section

SECTION 22 TWP 27 (S) RG 38W E/W

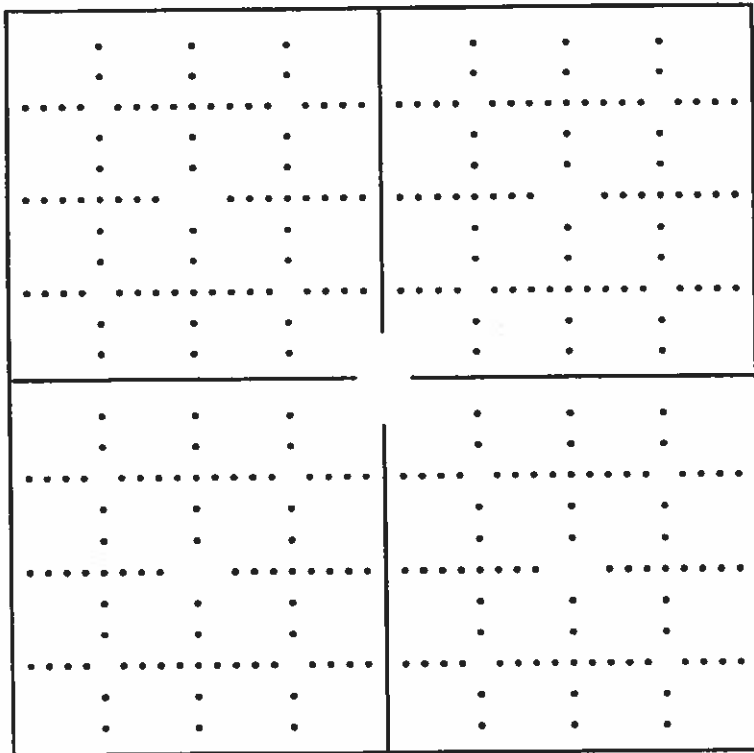
IS SECTION X REGULAR or IRREGULAR

IF SECTION IS IRREGULAR, LOCATE WELL FROM NEAREST CORNER BOUNDARY. (check line below)

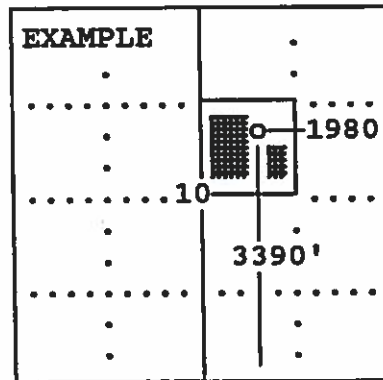
Section corner used: NE NW SE SW

NUMBER OF ACRES ATTRIBUTABLE TO WELL 640
QTR/QTR/QTR OF ACREAGE SW - SW - SW

(Show the location of the well and shade attributable acreage for prorated or spaced wells).
(Show the footage to the nearest lease or unit boundary line; and show footage to the nearest common source supply well).



See attached map



SEWARD CO.

The undersigned hereby certifies as Regulatory Compliance Advisor (title) for LINN Operating, Inc.

(Co.), a duly authorized agent, that all information shown hereon is true and correct to the best of my knowledge and belief, that all acreage claimed attributable to the well named herein is held by production from that well and hereby make application for an allowable to be assigned to the well upon the filing of this form and the State test, whichever is later.

Signature [Handwritten Signature]

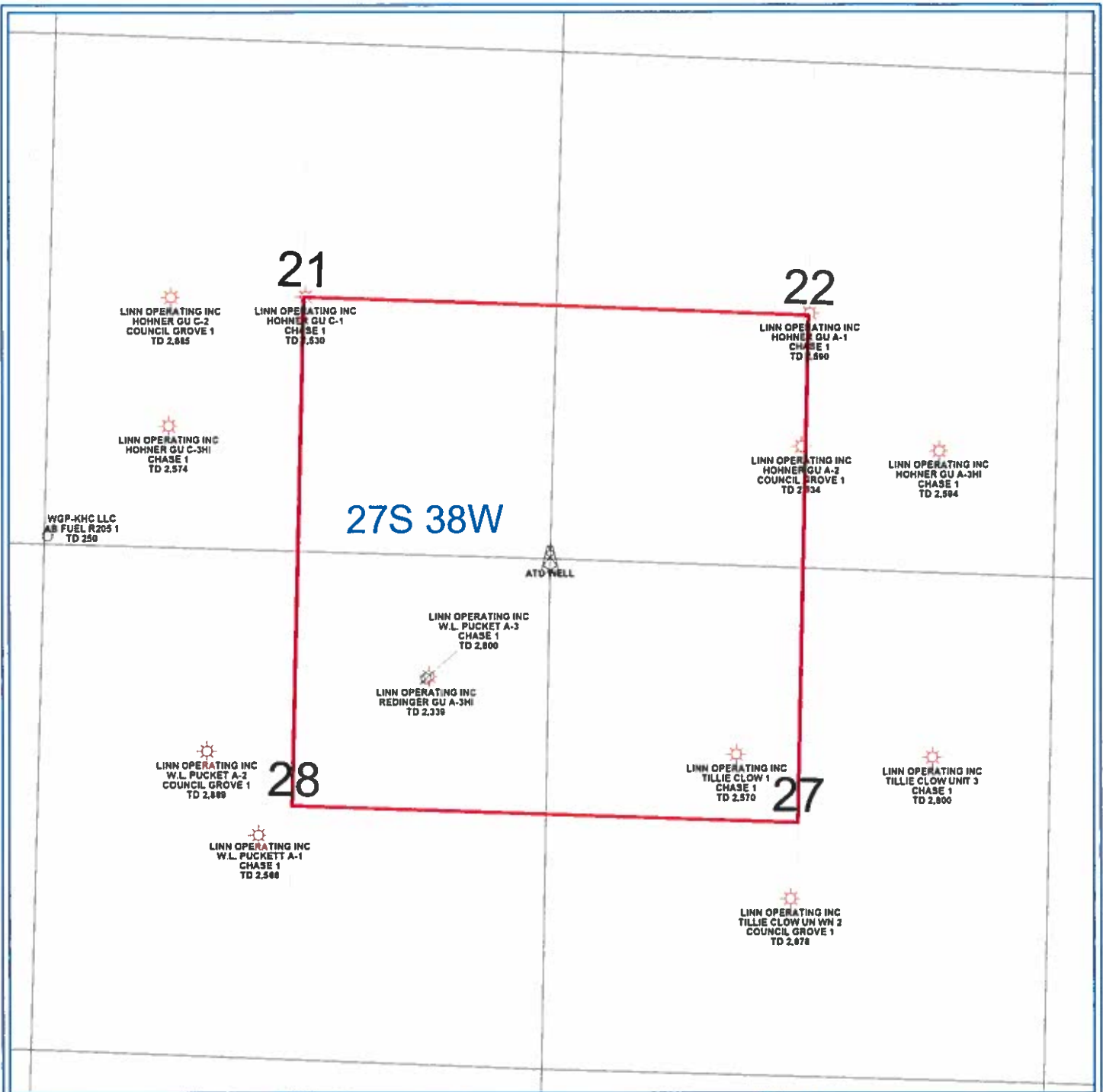
Subscribed and sworn to before me on this 29th day of May, 19 2014

[Handwritten Signature]



Notary Public FORM CG-8 (12/94)

My Commission expires



PETRA 4/25/2013 2 29 35 PM

<b>LINN Operating Inc</b>
Hugoton Kansas
ATU Location
Grant Co. 27S - 38W
<p>0      1,468 FEET</p>
<p><b>WELL SYMBOLS</b></p> <p> ABANDONED LOCATION</p> <p> ATU Well Location</p> <p> Gas Well</p>