

LINN OPERATING INC. MOLZ A-4 ATU-177  
 205' FNL  
 180' FWL  
 NW/4 OF NW/4 OF NW/4 OF  
 SECTION 27, T-27-S, R-39-W  
 LATITUDE: 37°40'40.90995" N  
 LONGITUDE: 101°34'48.29226" W  
 GROUND ELEVATION: 3178.3'

2330 B LAKEVIEW DRIVE  
 AMARILLO, TEXAS 79109  
 PH: (806)418-5253

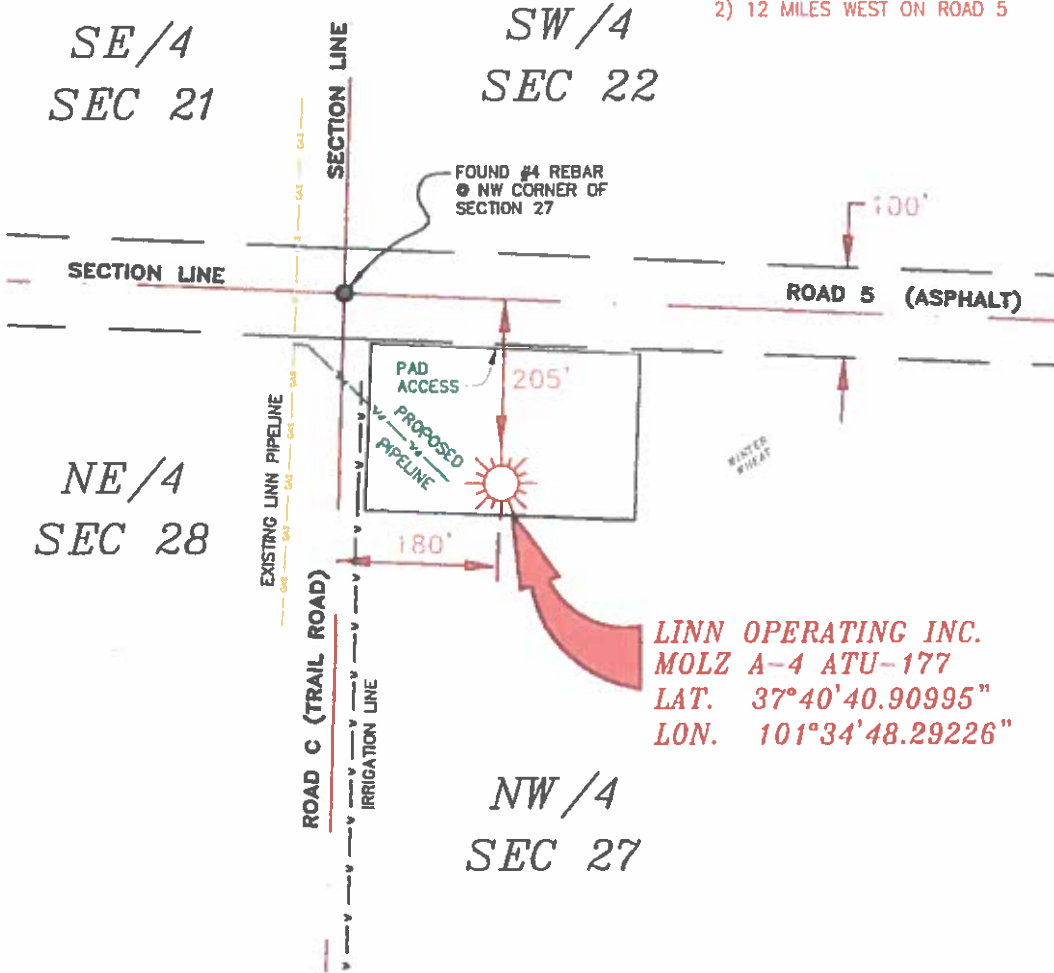
DRAWN BY: DMH  
 APPROVED BY: JAW  
 SCALE: 1" = 200'  
 DATE: 4/16/14



2225 W. OKLAHOMA AVE.  
 ULYSSES, KANSAS 67880  
 PH: (620)356-6940  
 FAX: (620)356-6950

**DRIVING DIRECTIONS:**

- BEGINNING AT INTERSECTION OF US HWY 160 & HWY 25
- 1) 7 MILES NORTH ON HWY 25
- 2) 12 MILES WEST ON ROAD 5



**LINN OPERATING INC.**  
**MOLZ A-4 ATU-177**  
**LAT. 37°40'40.90995"**  
**LON. 101°34'48.29226"**

**NOTES**

- 1) THIS PLAN DOES NOT REPRESENT A TRUE BOUNDARY SURVEY. THE BOUNDARIES AND LINES SHOWN ARE FROM LINES OF OCCUPANCY WHICH MAY NOT BE ACTUAL PROPERTY LINES.
- 2) CONTRACTOR TO CONTACT ONE-CALL FOR FOREIGN UTILITY LOCATIONS PRIOR TO ANY EXCAVATION OR CONSTRUCTION.
- 3) 1/10/27 LAT 1.016

**NW/4**  
**SEC 27**



T-27-S, R-39-W  
 STANTON COUNTY, KANSAS

**LINN OPERATING INC.**  
**MOLZ A-4 ATU-177**  
**SECTION 21, 22, 27 & 28**  
**T-27-S, R-39-W**  
**STANTON COUNTY, KANSAS**



JOHN DAVID KELLER, L.S. NO. 1518

PLAT AND CERTIFICATION OF ACREAGE ATTRIBUTABLE TO A GAS WELL

Kansas Corporation Commission, Conservation Division
Finney State Office Building, 130 South Market, Room 2078
Wichita, Kansas 67202

API NUMBER 15- \_\_\_\_\_

LOCATION OF WELL: COUNTY Stanton \_\_\_\_\_

OPERATOR LINN Operating, Inc. \_\_\_\_\_

LEASE Molz \_\_\_\_\_

WELL NUMBER A-4 ATU-177 \_\_\_\_\_

FIELD Hugoton-Panoma \_\_\_\_\_

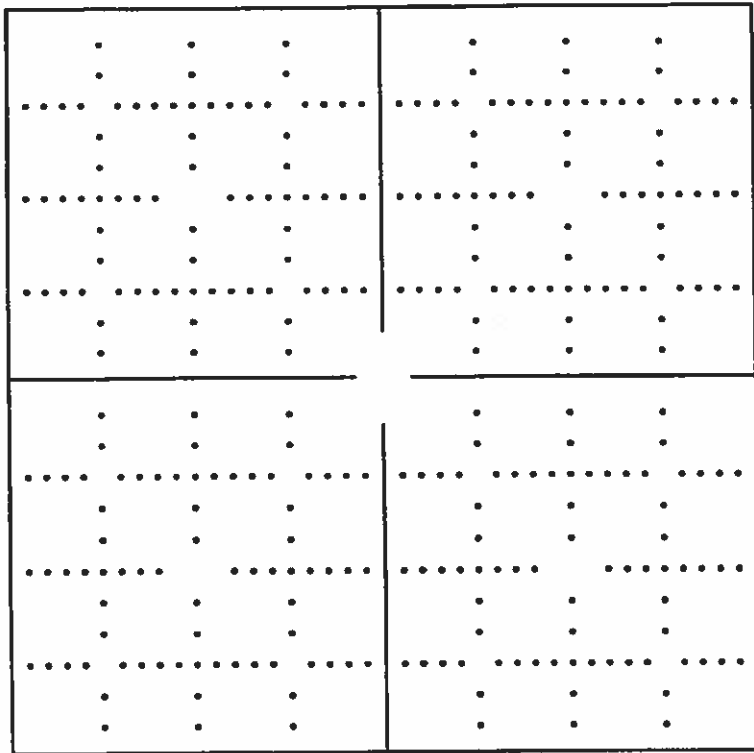
NUMBER OF ACRES ATTRIBUTABLE TO WELL 640 \_\_\_\_\_

QTR/QTR/QTR OF ACREAGE NW - NW - NW \_\_\_\_\_

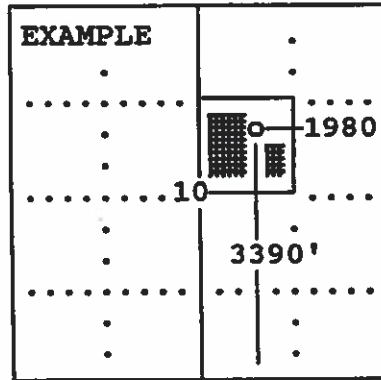
205 N feet from south/north line of section
180 W feet from east / west line of section

SECTION 27 TWP 27 (S) RG 39W E/W
IS SECTION X REGULAR or IRREGULAR
IF SECTION IS IRREGULAR, LOCATE WELL FROM
NEAREST CORNER BOUNDARY. (check line below)
Section corner used: NE NW SE SW

(Show the location of the well and shade attributable acreage for prorated or spaced wells).
(Show the footage to the nearest lease or unit boundary line; and show footage to the nearest
common source supply well).



See attached
map



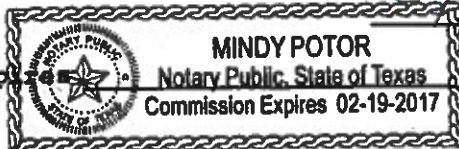
SEWARD CO.

The undersigned hereby certifies as Regulatory Compliance Advisor (title) for
LINN Operating, Inc. (Co.), a duly authorized agent, that all

information shown hereon is true and correct to the best of my knowledge and belief, that all
acreage claimed attributable to the well named herein is held by production from that well
and hereby make application for an allowable to be assigned to the well upon the filing of
this form and the State test, whichever is later.

Signature Shan Hienets \_\_\_\_\_

Subscribed and sworn to before me on this 29th day of May, 19 2014

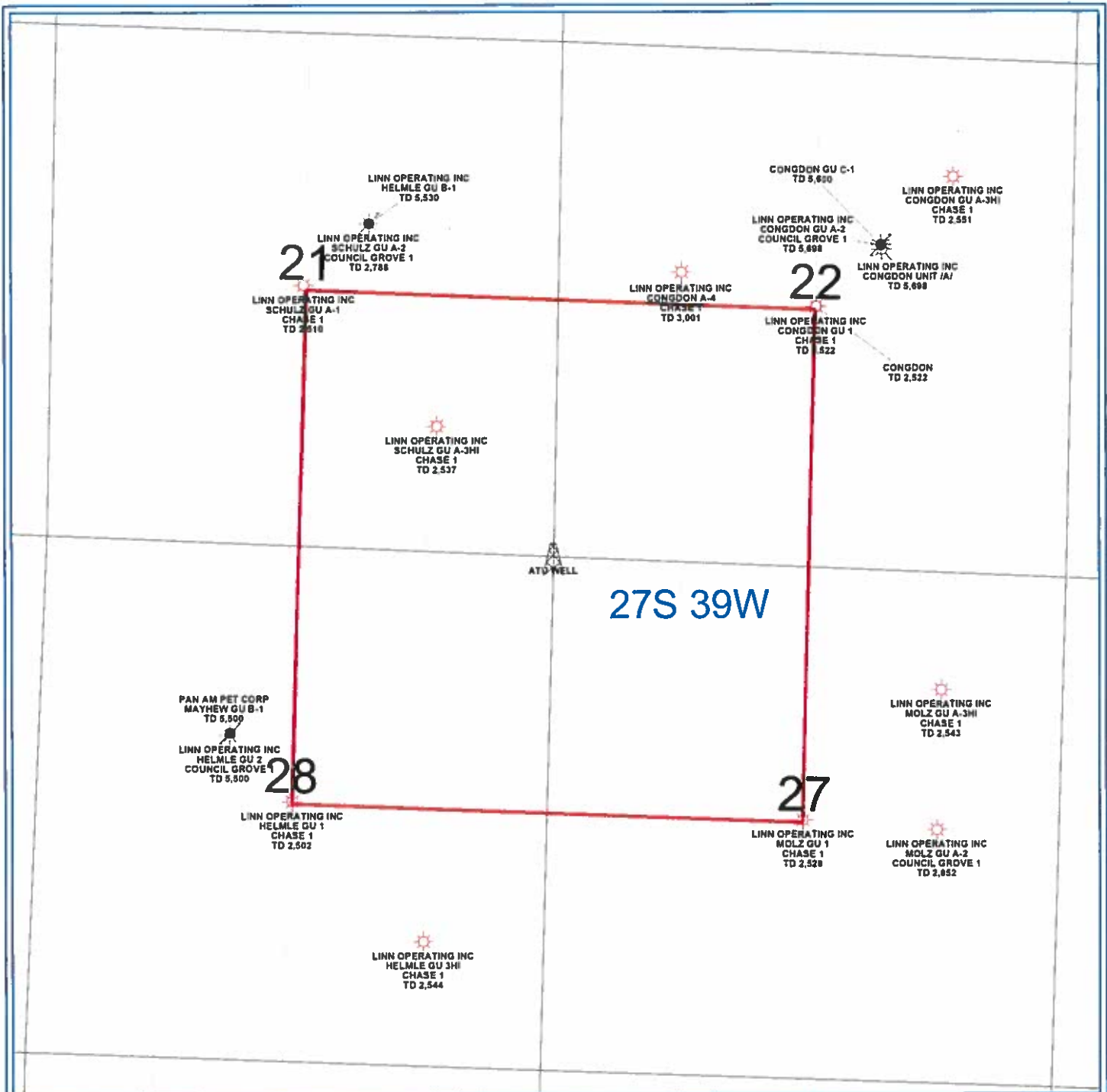


My Commission expires \_\_\_\_\_

MINDY POTER
Notary Public, State of Texas
Commission Expires 02-19-2017

Notary Public

FORM CG-8 (12/94)



PETRA 4/11/2013 10:12:11 AM

**LINN Operating Inc**

Hugoton Kansas

ATU Location

Stanton Co 27S - 39W



- WELL SYMBOLS**
- ATU Well Location
  - Gas Well
  - Plugged and Abandoned
  - Plugged & Abandoned Gas Well