

ADVANTAGE ELEVATIONS

OIL FIELD SURVEYORS

BOX 8604 - PRATT, KS 67124
(620) 672-6491

521141

INVOICE NO.

VAL ENERGY INC

OPERATOR

1-32

NO.

LAWRENCE

FARM

Cowley

COUNTY

32

S

32s

T

6e

R

835' FNL & 330' FWL of Sec.

LOCATION

ELEVATION: 1298' GR

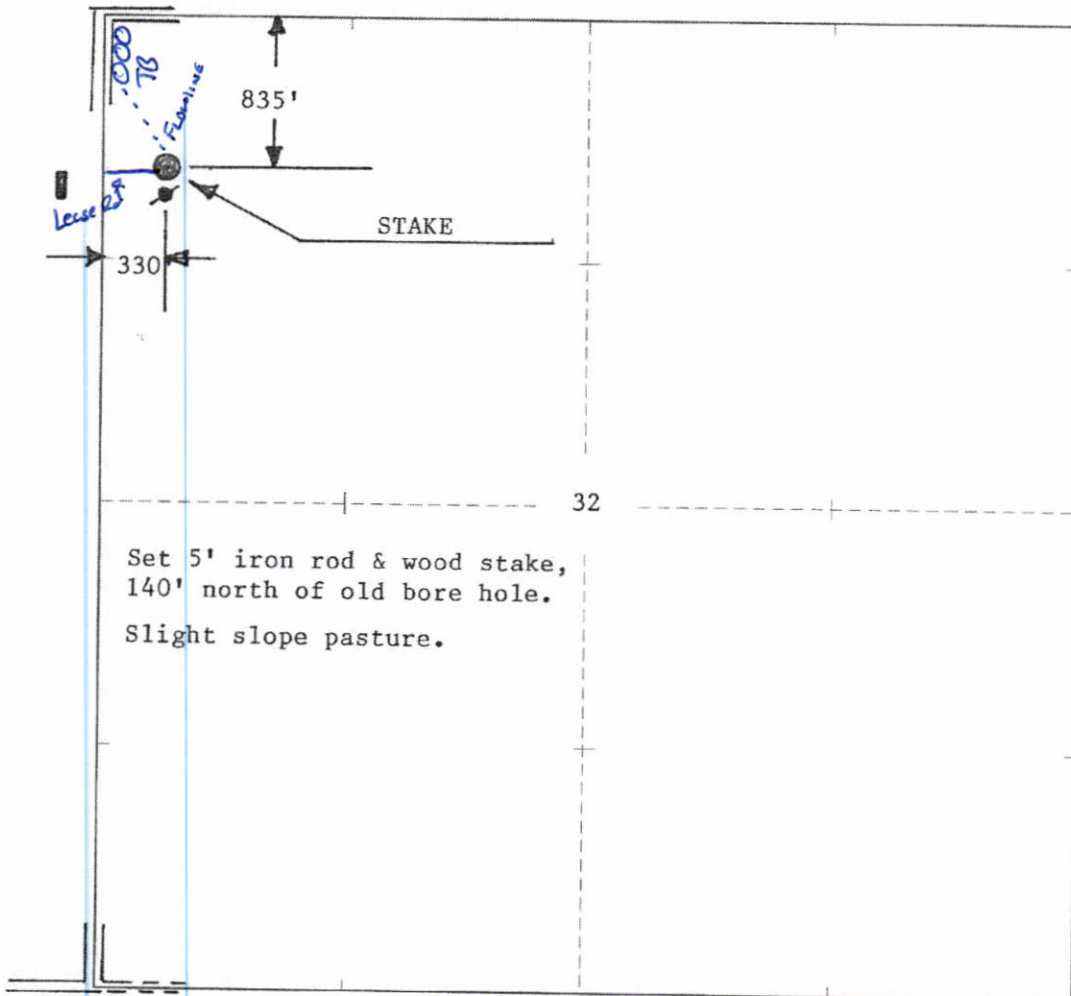
VAL ENERGY INC

200 W Douglas, Ste 520
Wichita, KS 67202-3005



AUTHORIZED BY: Todd Allam

SCALE: 1" = 1000'



5/21/14

DATE STAKED: _____