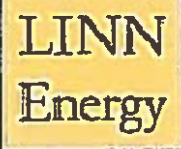


LINN OPERATING INC. HELMLE #4 ATU-262

205' FNL
 225' FWL
 NW/4 OF NW/4 OF NW/4 OF NW/4 OF
 SECTION 28, T-27-S, R-39-W
 LATITUDE: 37°40'41.19166" N
 LONGITUDE: 101°35'53.18450" W
 GROUND ELEVATION: 3183.2'

Keller
 Surveying &
 Mapping
 2330 B LAKEVIEW DRIVE
 AMARILLO, TEXAS 79109
 PH: (806)418-5253

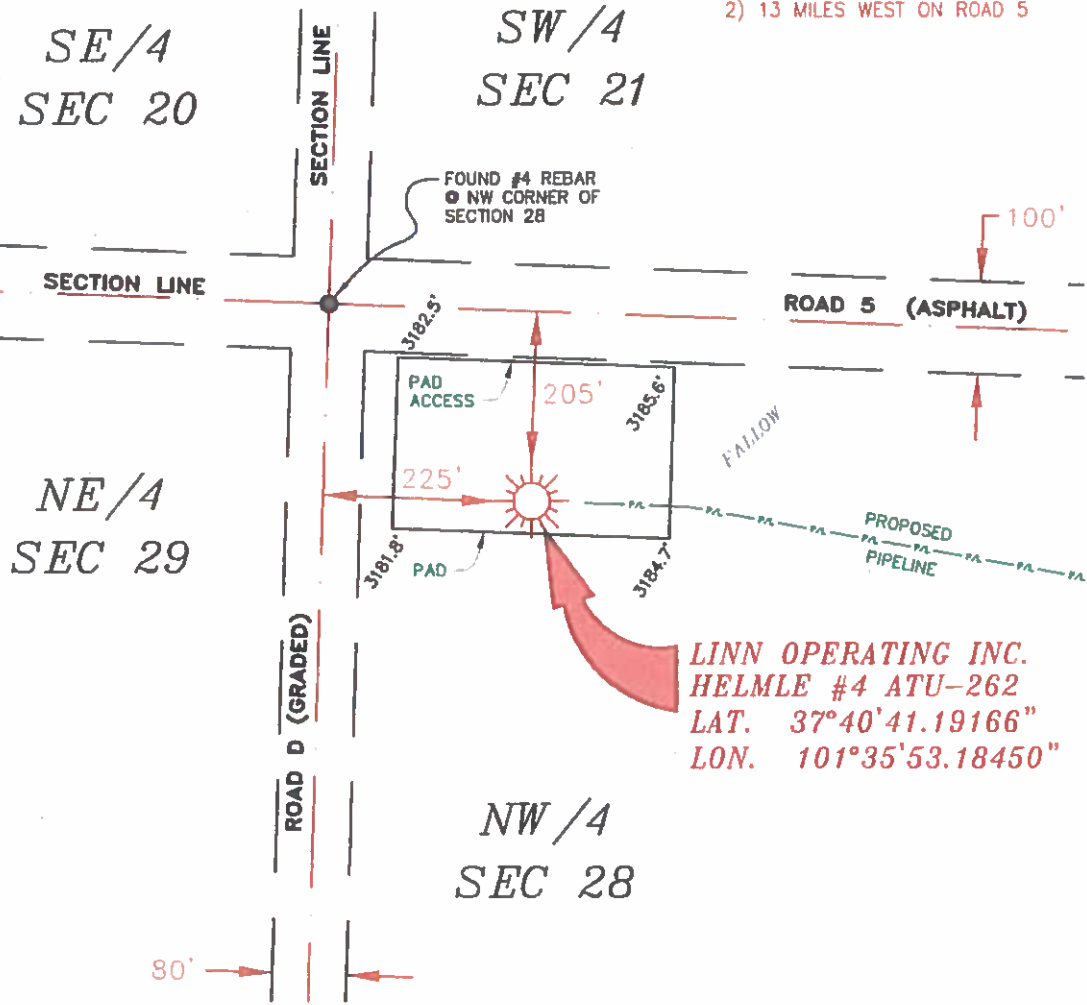
DRAWN BY: DWH
 APPROVED BY: JOK
 SCALE: 1" = 200'
 DATE: 4/15/14



2225 W OKLAHOMA AVE.
 ULYSSES KANSAS 67860
 PH: (620)356-6940
 FAX: (620)356-6950

DRIVING DIRECTIONS:

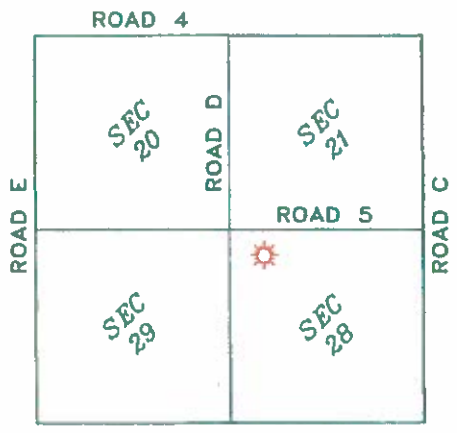
- BEGINNING AT INTERSECTION OF US HWY 160 & HWY 25
- 1) 7 MILES NORTH ON HWY 25
 - 2) 13 MILES WEST ON ROAD 5



LINN OPERATING INC.
 HELMLE #4 ATU-262
 LAT. 37°40'41.19166"
 LON. 101°35'53.18450"

NOTES:

- 1) THIS PLAN DOES NOT REPRESENT A TRUE BOUNDARY SURVEY. THE FOOTAGES AND TIES SHOWN ARE FROM LINES OF OCCUPATION WHICH MAY NOT BE ACTUAL PROPERTY LINES.
- 2) CONTRACTOR TO CONTACT ONE-CALL FOR FORECAST UTILITY LOCATIONS PRIOR TO ANY EXCAVATION OR CONSTRUCTION.
- 3) ROAD 27 (AT-014)



T-27-S, R-39-W
 STANTON COUNTY, KANSAS

JOHN DAVID KELLER, L.S. NO. 1518

Sheet 1 of 2

LINN OPERATING INC.
 HELMLE #4 ATU-262
 SECTION 20, 21, 28 & 29
 T-27-S, R-39-W
 STANTON COUNTY, KANSAS

PLAT AND CERTIFICATION OF ACREAGE ATTRIBUTABLE TO A GAS WELL

Kansas Corporation Commission, Conservation Division
 Finney State Office Building, 130 South Market, Room 2078
 Wichita, Kansas 67202

API NUMBER 15- _____

LOCATION OF WELL: COUNTY Stanton

OPERATOR LINN Operating, Inc.

205 N feet from south/north line of section

LEASE Helmle

225 W feet from east / west line of section

WELL NUMBER 4 ATU-262

FIELD Hugoton-Panoma

SECTION 28 TWP 27 (S) RG 39W E/W

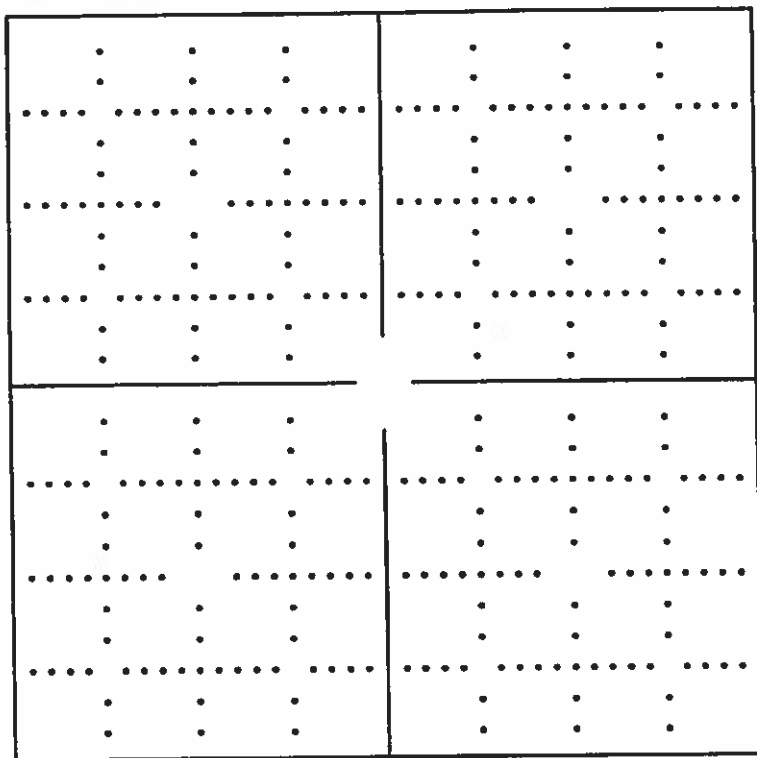
IS SECTION X REGULAR or _____ IRREGULAR

IF SECTION IS IRREGULAR, LOCATE WELL FROM NEAREST CORNER BOUNDARY. (check line below)

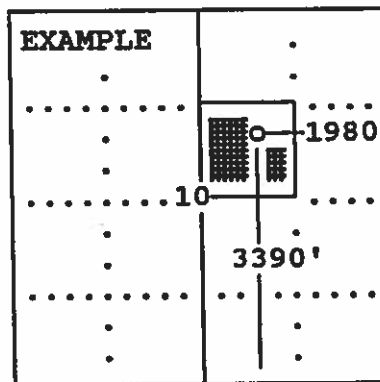
Section corner used: NE NW SE SW

NUMBER OF ACRES ATTRIBUTABLE TO WELL 640
 QTR/QTR/QTR OF ACREAGE NW - NW - NW

(Show the location of the well and shade attributable acreage for prorated or spaced wells).
 (Show the footage to the nearest lease or unit boundary line; and show footage to the nearest common source supply well).



see attached map



The undersigned hereby certifies as Regulatory Compliance Advisor (title) for LINN Operating, Inc. (Co.), a duly authorized agent, that all

information shown hereon is true and correct to the best of my knowledge and belief, that all acreage claimed attributable to the well named herein is held by production from that well and hereby make application for an allowable to be assigned to the well upon the filing of this form and the State test, whichever is later.

Signature *Shawn Hines*

Subscribed and sworn to before me on this 29th day of May, 19 2014

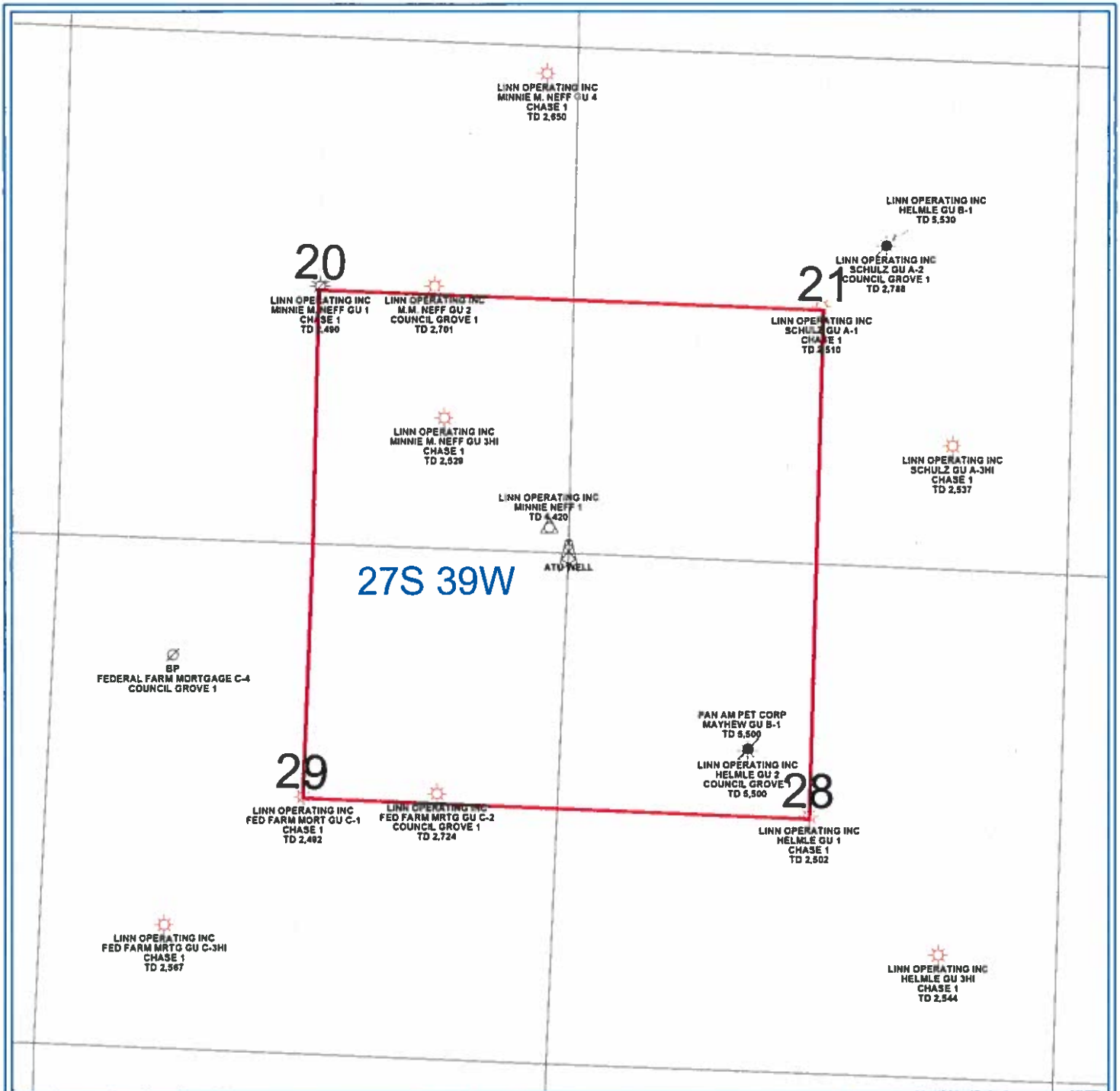
Mindy Poter

Notary Public



My Commission expires _____

FORM CG-8 (12/94)



27S 39W

20

21

LINN OPERATING INC
MINNIE M. NEFF GU 1
CHASE 1
TD 2,490

LINN OPERATING INC
M.M. NEFF GU 2
COUNCIL GROVE 1
TD 2,701

LINN OPERATING INC
SCHULZ GU A-1
CHASE 1
TD 2,510

LINN OPERATING INC
SCHULZ GU A-2
COUNCIL GROVE 1
TD 2,788

LINN OPERATING INC
MINNIE M. NEFF GU 3HI
CHASE 1
TD 2,628

LINN OPERATING INC
MINNIE NEFF 1
TD 4,420

LINN OPERATING INC
SCHULZ GU A-3HI
CHASE 1
TD 2,537

BP
FEDERAL FARM MORTGAGE C-4
COUNCIL GROVE 1

PAN AMP PET CORP
MAYHEW GU B-1
TD 9,500

29

28

LINN OPERATING INC
FED FARM MORTG GU C-1
CHASE 1
TD 2,492

LINN OPERATING INC
FED FARM MORTG GU C-2
COUNCIL GROVE 1
TD 2,724

LINN OPERATING INC
HELMLE GU 2
COUNCIL GROVE 1
TD 8,500

LINN OPERATING INC
HELMLE GU 1
CHASE 1
TD 2,502

LINN OPERATING INC
FED FARM MORTG GU C-3HI
CHASE 1
TD 2,567

LINN OPERATING INC
HELMLE GU 3HI
CHASE 1
TD 2,544

PETRA 4/25/2013 2:13:55 PM

LINN Operating Inc

Hugoton Kansas

ATU Location

Stanton Co. 27S - 39W



- WELL SYMBOLS**
- ABANDONED LOCATION
 - ATU Well Location
 - Gas Well
 - Plugged and Abandoned
 - Plugged & Abandoned Gas Well
 - Service Well