

ADVANTAGE ELEVATIONS

OIL FIELD SURVEYORS

BOX 8604 - PRATT, KS 67124
(620) 672-6491

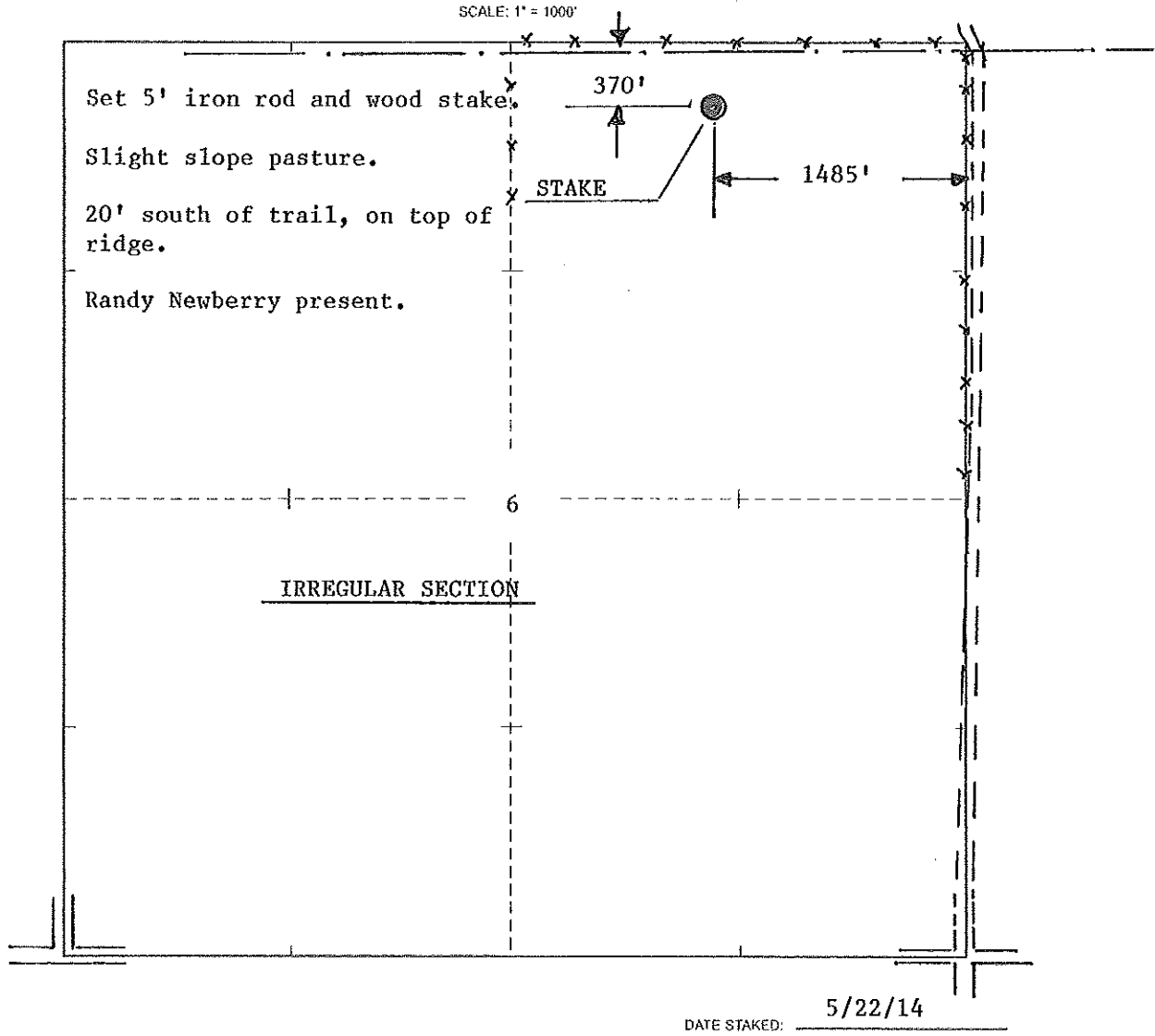
522142

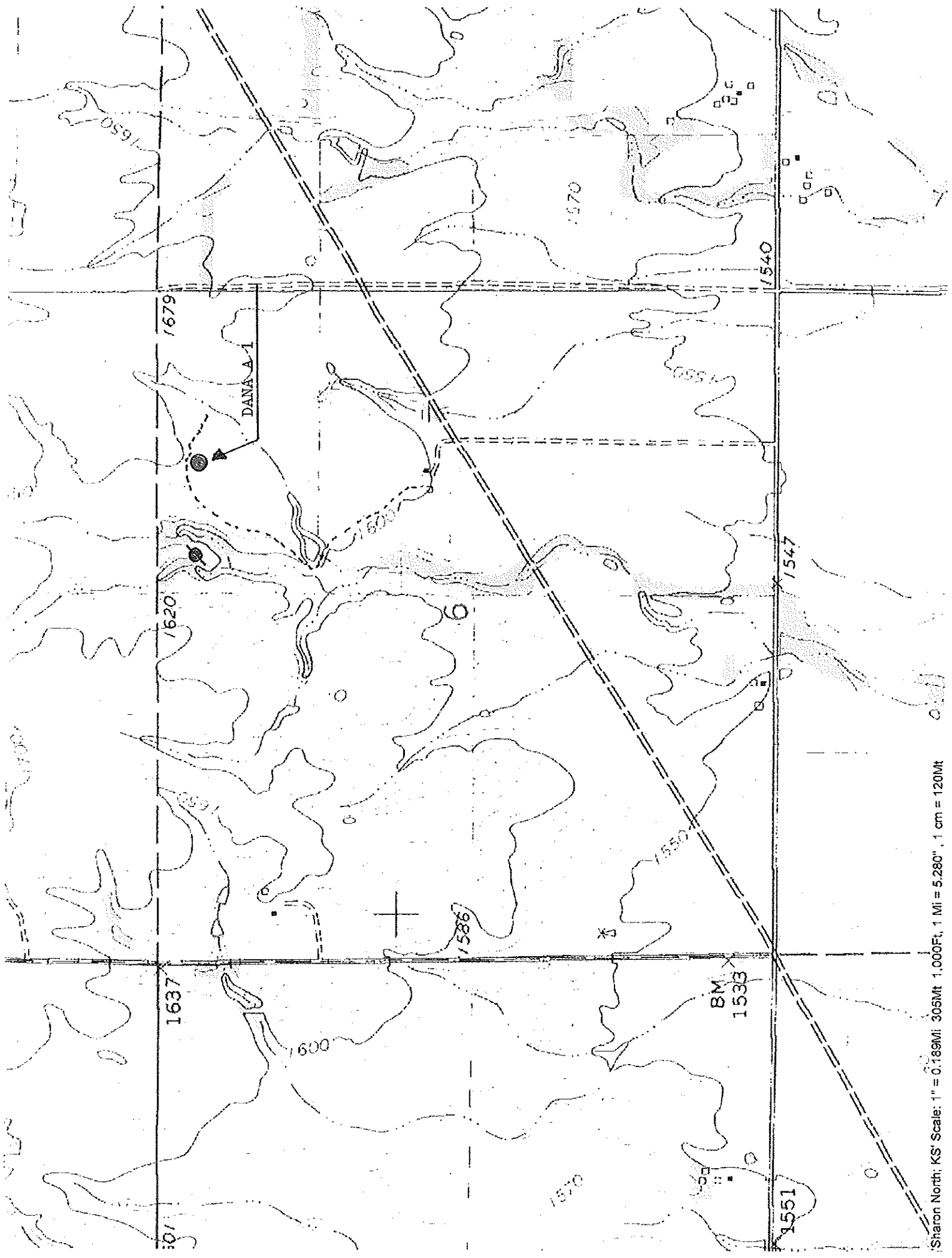
INVOICE NO

R & B OIL & GAS OPERATOR 1 NO DANA A FARM
Barber COUNTY 6 S 32s T 10w R 370' FNL & 1485' FEL of Sec. LOCATION
ELEVATION: 1646' GR

R
R & B OIL & GAS
PO BOX 195
Attica, KS 67009-0195
R

AUTHORIZED BY: Randy Newberry





Sharon North, KS' Scale: 1" = 0.189Mi 305Mt 1.000Ft, 1 Mi = 5.280', 1 cm = 120Mt