



DRILL STEM TEST REPORT

Prepared For: **Murfin Drilling Co.**

250 N. Water Ste.300
Wichita KS .67202

ATTN: Chuck Schmaltz

Burk Trust 'J' #1-25

25 1s 36w Rawlins,KS

Start Date: 2014.02.19 @ 13:15:01

End Date: 2014.02.19 @ 22:35:30

Job Ticket #: 56792 DST #: 1

Trilobite Testing, Inc
PO Box 362 Hays, KS 67601
ph: 785-625-4778 fax: 785-625-5620

Printed: 2014.03.03 @ 11:00:45

Murfin Drilling Co. 25 1s 36w Rawlins,KS Burk Trust 'J' #1-25 DST # 1 LKC A-D 2014.02.19



**TRILOBITE
TESTING, INC**

DRILL STEM TEST REPORT

Murfin Drilling Co.

25 1s 36w Rawlins,KS

250 N. Water Ste.300
Wichita KS .67202

Burk Trust 'J' #1-25

Job Ticket: 56792

DST#: 1

ATTN: Chuck Schmaltz

Test Start: 2014.02.19 @ 13:15:01

GENERAL INFORMATION:

Formation: **LKC A-D**

Deviated: No Whipstock: ft (KB)

Time Tool Opened: 15:35:30

Time Test Ended: 22:35:30

Test Type: Conventional Bottom Hole (Initial)

Tester: Chuck Kreuzer Jr.

Unit No: 61

Interval: 4142.00 ft (KB) To 4270.00 ft (KB) (TVD)

Reference Elevations: 3255.00 ft (KB)

Total Depth: 4270.00 ft (KB) (TVD)

3245.00 ft (CF)

Hole Diameter: 7.88 inches Hole Condition: Good

KB to GR/CF: 10.00 ft

Serial #: 8651 Outside

Press@RunDepth: 664.78 psig @ 4143.00 ft (KB)

Capacity: 8000.00 psig

Start Date: 2014.02.19

End Date:

2014.02.19

Last Calib.:

2014.02.19

Start Time: 13:15:01

End Time:

22:35:30

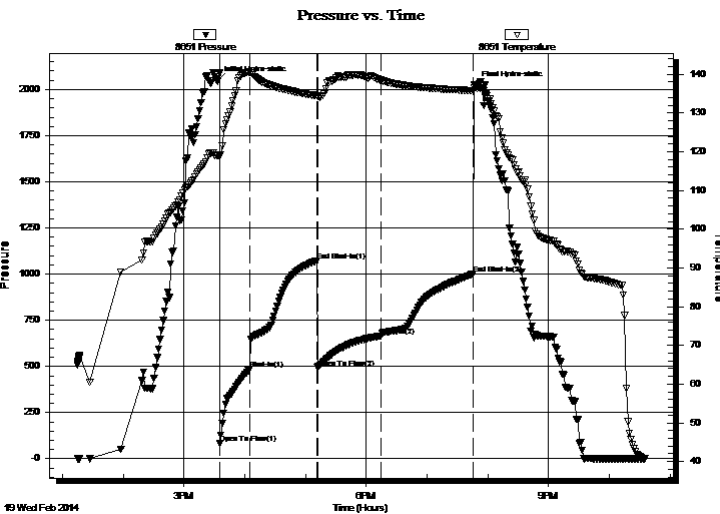
Time On Btm:

2014.02.19 @ 15:33:00

Time Off Btm:

2014.02.19 @ 19:47:30

TEST COMMENT: IF: Strong blow , Built to B.O.B in 4 mins.
IS: Bled off blow , Weak blow back. Built to 1/4 in. over 20 mins. Dead in 60 mins.
FF: Strong blow , Built to B.O.B in 7 mins
IS: Bled off, No blow back



PRESSURE SUMMARY

Time (Min.)	Pressure (psig)	Temp (deg F)	Annotation
0	2046.70	119.09	Initial Hydro-static
3	80.99	118.65	Open To Flow (1)
32	486.84	140.46	Shut-In(1)
98	1072.26	134.48	End Shut-In(1)
99	493.50	134.33	Open To Flow (2)
162	664.78	138.47	Shut-In(2)
253	999.46	135.76	End Shut-In(2)
255	2022.22	136.51	Final Hydro-static

Recovery

Length (ft)	Description	Volume (bbl)
558.00	mcw -10%m90%w	2.74
194.00	mcw -40%m60%w	2.72
564.00	w cm-50%w 50%m	7.91
193.00	ocmw -15%o20%w 65%m	2.71
0.00	94 ft. gas in pipe	0.00

Gas Rates

Choke (inches)	Pressure (psig)	Gas Rate (Mcf/d)



**TRILOBITE
TESTING, INC**

DRILL STEM TEST REPORT

TOOL DIAGRAM

Murfin Drilling Co.

25 1s 36w Rawlins,KS

250 N. Water Ste.300
Wichita KS .67202

Burk Trust 'J' #1-25

Job Ticket: 56792

DST#: 1

ATTN: Chuck Schmaltz

Test Start: 2014.02.19 @ 13:15:01

Tool Information

Drill Pipe:	Length: 3585.00 ft	Diameter: 3.80 inches	Volume: 50.29 bbl	Tool Weight: 2600.00 lb
Heavy Wt. Pipe:	Length: 0.00 ft	Diameter: 0.00 inches	Volume: 0.00 bbl	Weight set on Packer: 25000.00 lb
Drill Collar:	Length: 558.00 ft	Diameter: 2.25 inches	Volume: 2.74 bbl	Weight to Pull Loose: 94000.00 lb
			<u>Total Volume: 53.03 bbl</u>	Tool Chased 2.00 ft
Drill Pipe Above KB:	29.00 ft			String Weight: Initial 80000.00 lb
Depth to Top Packer:	4142.00 ft			Final 84000.00 lb
Depth to Bottom Packer:	ft			
Interval between Packers:	125.00 ft			
Tool Length:	153.00 ft			
Number of Packers:	2	Diameter: 6.75 inches		

Tool Comments:

Tool Description

Tool Description	Length (ft)	Serial No.	Position	Depth (ft)	Accum. Lengths
Shut In Tool	5.00			4119.00	
Hydraulic tool	5.00			4124.00	
Jars	5.00			4129.00	
Safety Joint	3.00			4132.00	
Packer	5.00			4137.00	28.00 Bottom Of Top Packer
Packer	5.00			4142.00	
Packer - Shale	0.00			4142.00	
Stubb	1.00			4143.00	
Recorder	0.00	8673	Inside	4143.00	
Recorder	0.00	8651	Outside	4143.00	
Perforations	25.00			4168.00	
change Over Sub	1.00			4169.00	
Drill Pipe	94.00			4263.00	
Change Over Sub	1.00			4264.00	
Bullnose	3.00			4267.00	125.00 Bottom Packers & Anchor

Total Tool Length: 153.00



**TRILOBITE
TESTING, INC**

DRILL STEM TEST REPORT

FLUID SUMMARY

Murfin Drilling Co.

25 1s 36w Rawlins,KS

250 N. Water Ste.300
Wichita KS .67202

Burk Trust 'J' #1-25

Job Ticket: 56792

DST#: 1

ATTN: Chuck Schmaltz

Test Start: 2014.02.19 @ 13:15:01

Mud and Cushion Information

Mud Type: Gel Chem

Cushion Type:

Oil API:

deg API

Mud Weight: 9.00 lb/gal

Cushion Length:

ft

Water Salinity:

ppm

Viscosity: 80.00 sec/qt

Cushion Volume:

bbbl

Water Loss: 6.39 in³

Gas Cushion Type:

Resistivity: ohm.m

Gas Cushion Pressure:

psig

Salinity: 700.00 ppm

Filter Cake: 2.00 inches

Recovery Information

Recovery Table

Length ft	Description	Volume bbbl
558.00	mcw -10%m90%w	2.744
194.00	mcw -40%m60%w	2.721
564.00	w cm-50%w 50%m	7.911
193.00	ocmw -15%o20%w 65%m	2.707
0.00	94 ft. gas in pipe	0.000

Total Length: 1509.00 ft Total Volume: 57.245 bbl

Num Fluid Samples: 0

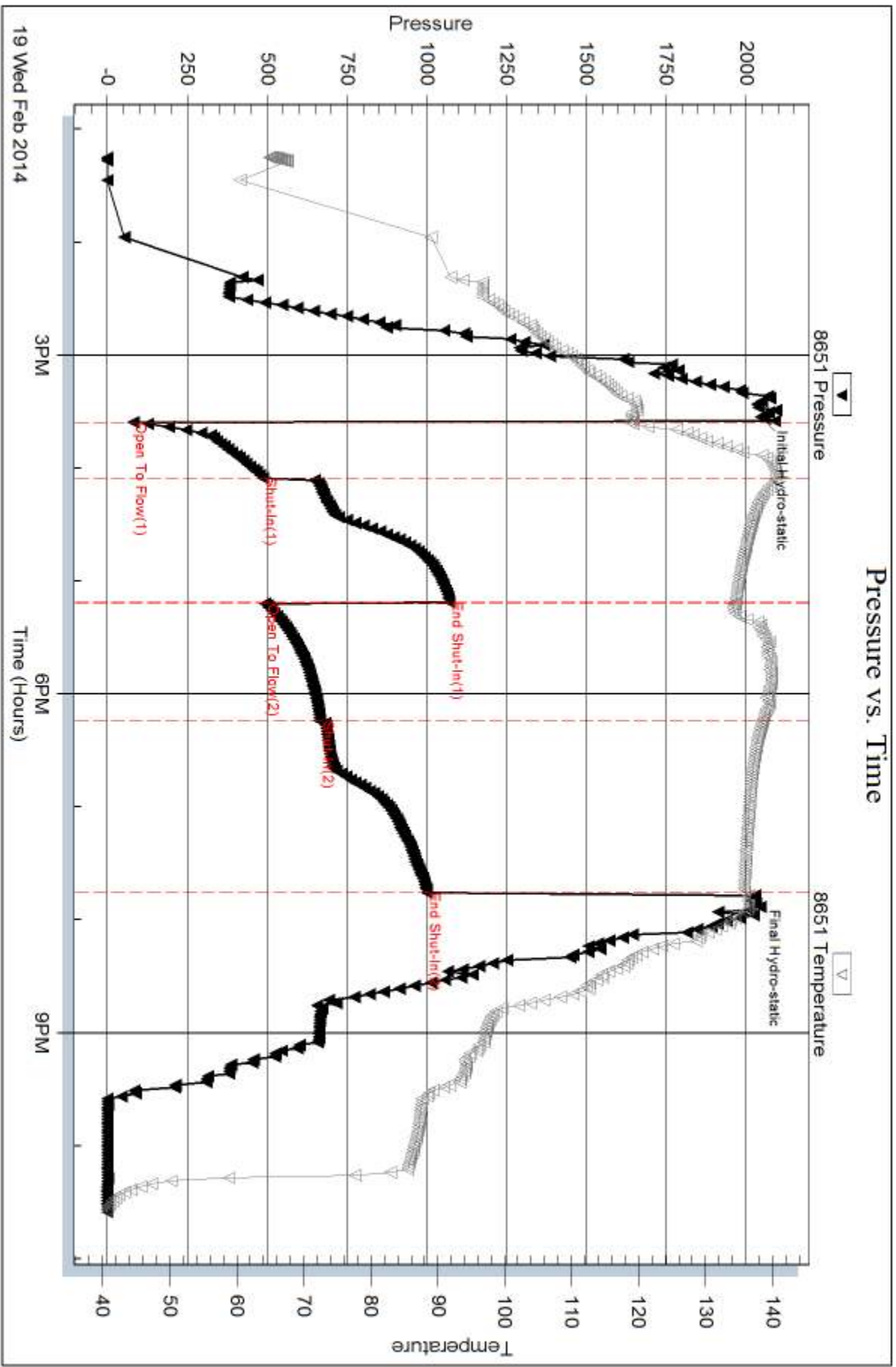
Num Gas Bombs: 0

Serial #:

Laboratory Name:

Laboratory Location:

Recovery Comments:





DRILL STEM TEST REPORT

Prepared For: **Murfin Drilling Co.**

250 N. Water Ste.300
Wichita KS .67202

ATTN: Chuck Schmaltz

Burk Trust 'J' #1-25

25 1s 36w Rawlins,KS

Start Date: 2014.02.20 @ 14:18:00

End Date: 2014.02.21 @ 02:02:00

Job Ticket #: 56793 DST #: 2

Trilobite Testing, Inc
PO Box 362 Hays, KS 67601
ph: 785-625-4778 fax: 785-625-5620

Printed: 2014.03.03 @ 11:00:12



**TRILOBITE
TESTING, INC**

DRILL STEM TEST REPORT

Murfin Drilling Co.

25 1s 36w Rawlins,KS

250 N. Water Ste.300
Wichita KS .67202

Burk Trust 'J' #1-25

Job Ticket: 56793

DST#: 2

ATTN: Chuck Schmaltz

Test Start: 2014.02.20 @ 14:18:00

GENERAL INFORMATION:

Formation: **LKC-EF**

Deviated: No Whipstock: ft (KB)

Time Tool Opened: 19:49:00

Time Test Ended: 02:02:00

Test Type: Conventional Bottom Hole (Reset)

Tester: Chuck Kreuzer Jr.

Unit No: 61

Interval: 4273.00 ft (KB) To 4385.00 ft (KB) (TVD)

Reference Elevations: 3255.00 ft (KB)

Total Depth: 4385.00 ft (KB) (TVD)

3245.00 ft (CF)

Hole Diameter: 7.88 inches Hole Condition: Good

KB to GR/CF: 10.00 ft

Serial #: 8673

Inside

Press@RunDepth: 52.54 psig @ 4274.00 ft (KB)

Capacity: 8000.00 psig

Start Date: 2014.02.20

End Date:

2014.02.21

Last Calib.: 2014.02.21

Start Time: 14:18:01

End Time:

02:02:00

Time On Btm: 2014.02.20 @ 19:45:30

Time Off Btm: 2014.02.20 @ 23:11:00

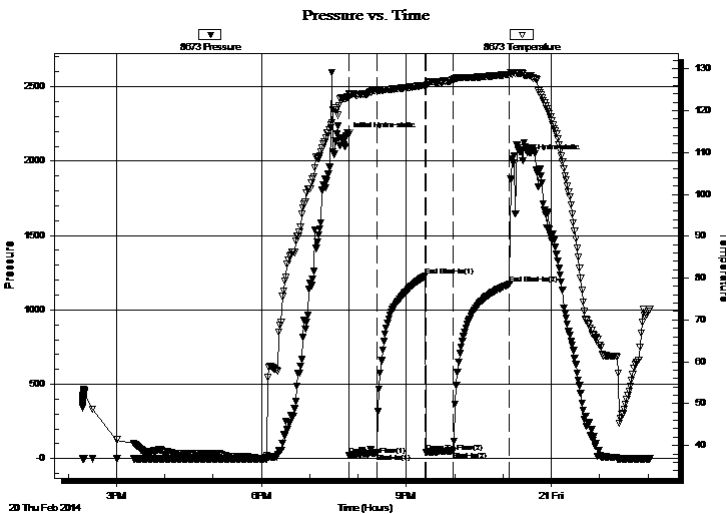
TEST COMMENT: IF: Weak blow 1/2 in Died in 22 mins.

IS: No blow back

FF: No blow

FS: No blow back

PRESSURE SUMMARY



Time (Min.)	Pressure (psig)	Temp (deg F)	Annotation
0	2167.24	122.96	Initial Hydro-static
4	21.22	123.20	Open To Flow (1)
38	37.00	124.70	Shut-In(1)
98	1228.40	126.04	End Shut-In(1)
99	41.44	125.94	Open To Flow (2)
133	52.54	127.36	Shut-In(2)
203	1172.50	128.63	End Shut-In(2)
206	2015.29	128.67	Final Hydro-static

Recovery

Length (ft)	Description	Volume (bbl)
20.00	mud-100%	0.10

* Recovery from multiple tests

Gas Rates

Choke (inches)	Pressure (psig)	Gas Rate (Mcf/d)



**TRILOBITE
TESTING, INC**

DRILL STEM TEST REPORT

Murfin Drilling Co.

25 1s 36w Rawlins, KS

250 N. Water Ste.300
Wichita KS .67202

Burk Trust 'J' #1-25

Job Ticket: 56793

DST#: 2

ATTN: Chuck Schmalz

Test Start: 2014.02.20 @ 14:18:00

GENERAL INFORMATION:

Formation: **LKC-EF**

Deviated: No Whipstock: ft (KB)

Time Tool Opened: 19:49:00

Time Test Ended: 02:02:00

Test Type: Conventional Bottom Hole (Reset)

Tester: Chuck Kreuzer Jr.

Unit No: 61

Interval: 4273.00 ft (KB) To 4385.00 ft (KB) (TVD)

Reference Elevations: 3255.00 ft (KB)

Total Depth: 4385.00 ft (KB) (TVD)

3245.00 ft (CF)

Hole Diameter: 7.88 inches Hole Condition: Good

KB to GR/CF: 10.00 ft

Serial #: 8651 Outside

Press@RunDepth: psig @ 4274.00 ft (KB)

Capacity: 8000.00 psig

Start Date: 2014.02.20

End Date:

2014.02.21

Last Calib.:

2014.02.21

Start Time: 14:18:01

End Time:

02:02:00

Time On Btm:

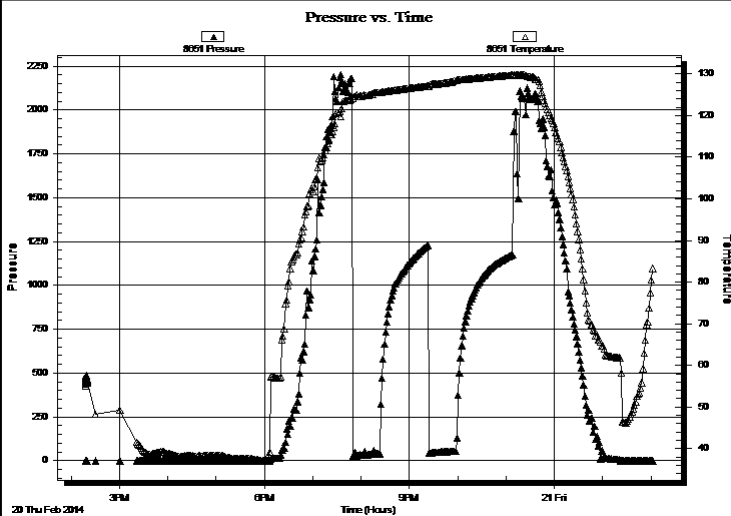
Time Off Btm:

TEST COMMENT: IF: Weak blow 1/2 in Died in 22 mins.

IS: No blow back

FF: No blow

FS: No blow back



PRESSURE SUMMARY

Time (Min.)	Pressure (psig)	Temp (deg F)	Annotation

Recovery

Length (ft)	Description	Volume (bbl)
20.00	mud-100%	0.10

Gas Rates

Choke (inches)	Pressure (psig)	Gas Rate (Mcf/d)

* Recovery from multiple tests



**TRILOBITE
TESTING, INC**

DRILL STEM TEST REPORT

TOOL DIAGRAM

Murfin Drilling Co.

25 1s 36w Rawlins,KS

250 N. Water Ste.300
Wichita KS .67202

Burk Trust 'J' #1-25

Job Ticket: 56793

DST#: 2

ATTN: Chuck Schmaltz

Test Start: 2014.02.20 @ 14:18:00

Tool Information

Drill Pipe:	Length: 3702.00 ft	Diameter: 3.80 inches	Volume: 51.93 bbl	Tool Weight: 2600.00 lb
Heavy Wt. Pipe:	Length: 0.00 ft	Diameter: 0.00 inches	Volume: 0.00 bbl	Weight set on Packer: 25000.00 lb
Drill Collar:	Length: 558.00 ft	Diameter: 2.25 inches	Volume: 2.74 bbl	Weight to Pull Loose: 100000.0 lb
			<u>Total Volume: 54.67 bbl</u>	Tool Chased 8.00 ft
Drill Pipe Above KB:	15.00 ft			String Weight: Initial 80000.00 lb
Depth to Top Packer:	4273.00 ft			Final 80000.00 lb
Depth to Bottom Packer:	ft			
Interval between Packers:	112.00 ft			
Tool Length:	140.00 ft			
Number of Packers:	2	Diameter: 6.75 inches		

Tool Comments:

Tool Description

Tool Description	Length (ft)	Serial No.	Position	Depth (ft)	Accum. Lengths
Shut In Tool	5.00			4250.00	
Hydraulic tool	5.00			4255.00	
Jars	5.00			4260.00	
Safety Joint	3.00			4263.00	
Packer	5.00			4268.00	28.00 Bottom Of Top Packer
Packer	5.00			4273.00	
Packer - Shale	0.00			4273.00	
Stubb	1.00			4274.00	
Recorder	0.00	8673	Inside	4274.00	
Recorder	0.00	8651	Outside	4274.00	
Perforations	11.00			4285.00	
change Over Sub	1.00			4286.00	
Drill Pipe	95.00			4381.00	
Change Over Sub	1.00			4382.00	
Bullnose	3.00			4385.00	112.00 Bottom Packers & Anchor

Total Tool Length: 140.00



**TRILOBITE
TESTING, INC**

DRILL STEM TEST REPORT

FLUID SUMMARY

Murfin Drilling Co.

25 1s 36w Rawlins,KS

250 N. Water Ste.300
Wichita KS .67202

Burk Trust 'J' #1-25

Job Ticket: 56793

DST#: 2

ATTN: Chuck Schmaltz

Test Start: 2014.02.20 @ 14:18:00

Mud and Cushion Information

Mud Type: Gel Chem

Cushion Type:

Oil API:

deg API

Mud Weight: 10.00 lb/gal

Cushion Length:

ft

Water Salinity:

ppm

Viscosity: 53.00 sec/qt

Cushion Volume:

bbbl

Water Loss: 7.59 in³

Gas Cushion Type:

Resistivity: ohm.m

Gas Cushion Pressure:

psig

Salinity: 1100.00 ppm

Filter Cake: 2.00 inches

Recovery Information

Recovery Table

Length ft	Description	Volume bbl
20.00	mud-100%	0.098

Total Length: 20.00 ft Total Volume: 0.098 bbl

Num Fluid Samples: 0

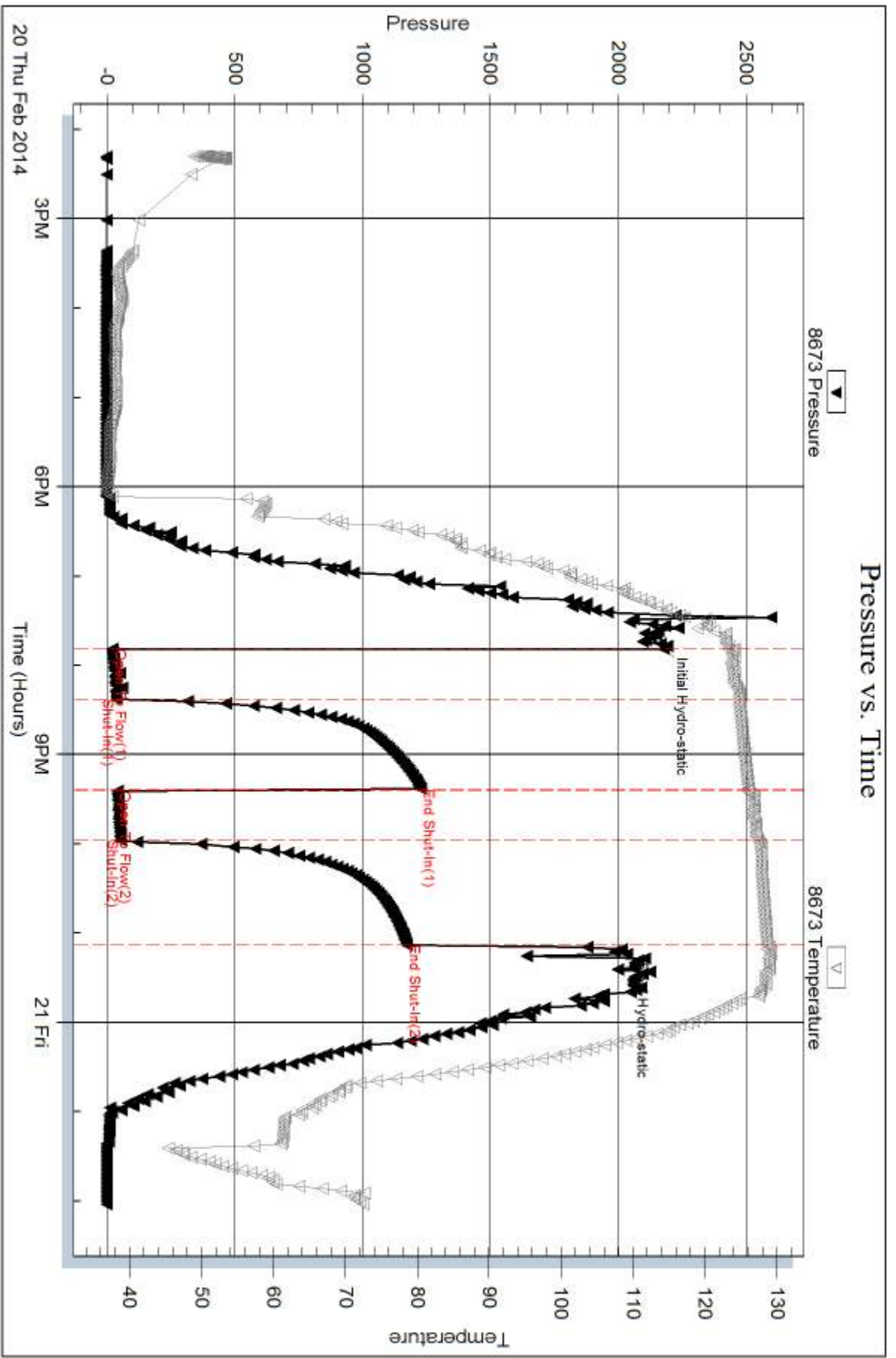
Num Gas Bombs: 0

Serial #:

Laboratory Name:

Laboratory Location:

Recovery Comments:

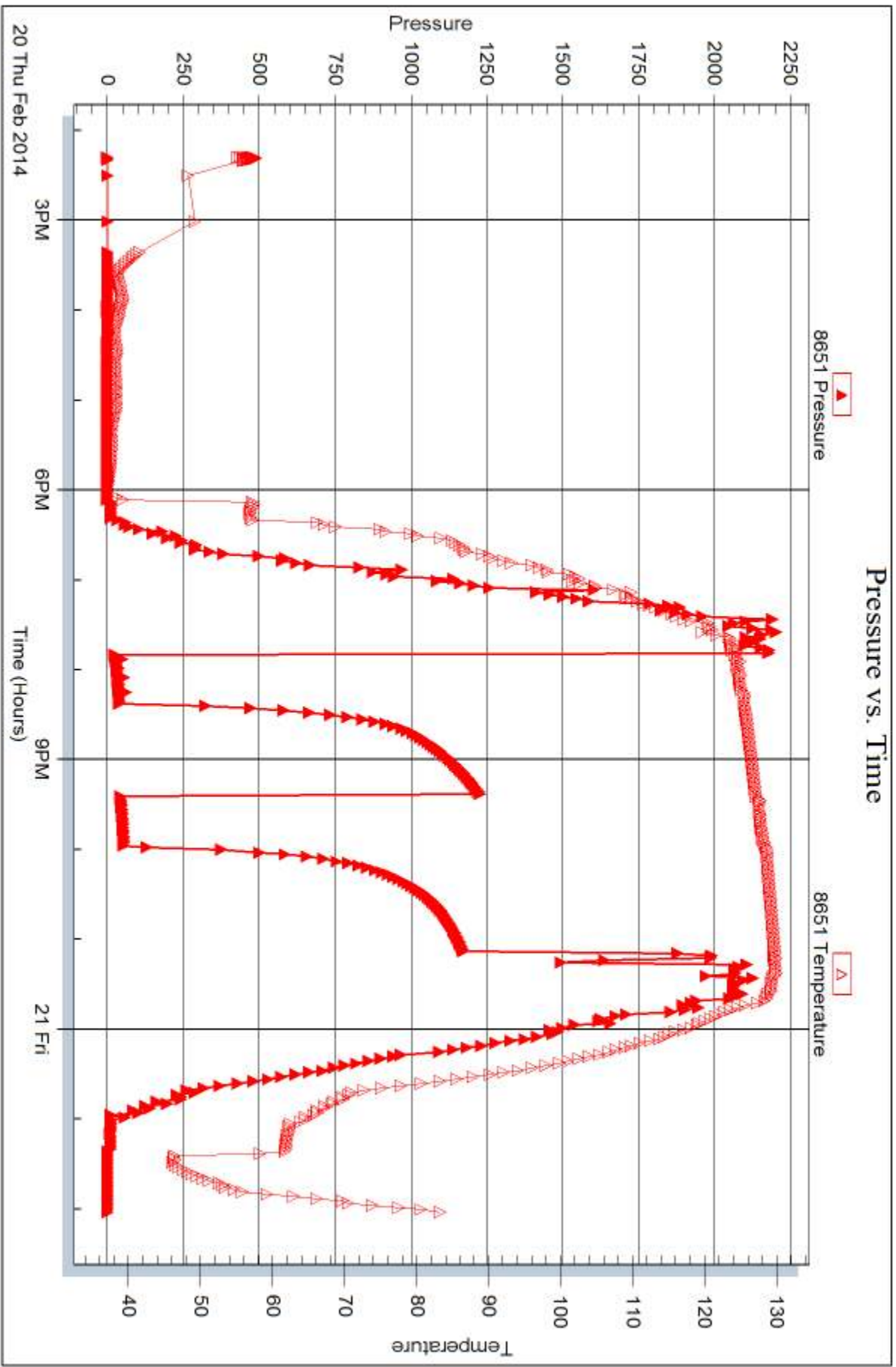


Serial #: 8651

Outside Murfin Drilling Co.

Burk Trust 'J' #1-25

DST Test Number: 2



Trilobite Testing, Inc

Ref. No: 56793

Printed: 2014.03.03 @ 11:00:14



DRILL STEM TEST REPORT

Prepared For: **Murfin Drilling Co.**

250 N. Water Ste.300
Wichita KS .67202

ATTN: Chuck Schmaltz

Burk Trust 'J' #1-25

25 1s 36w Rawlins,KS

Start Date: 2014.02.21 @ 11:10:00

End Date: 2014.02.21 @ 19:26:30

Job Ticket #: 56794 DST #: 3

Trilobite Testing, Inc
PO Box 362 Hays, KS 67601
ph: 785-625-4778 fax: 785-625-5620

Printed: 2014.03.03 @ 10:58:15

Murfin Drilling Co.
25 1s 36w Rawlins,KS
Burk Trust 'J' #1-25
DST # 3
LKC-J
2014.02.21



TRILOBITE TESTING, INC

DRILL STEM TEST REPORT

Murfin Drilling Co.

25 1s 36w Rawlins,KS

250 N. Water Ste.300
Wichita KS .67202

Burk Trust 'J' #1-25

Job Ticket: 56794

DST#: 3

ATTN: Chuck Schmaltz

Test Start: 2014.02.21 @ 11:10:00

GENERAL INFORMATION:

Formation: **LKC-J**
 Deviated: No Whipstock: ft (KB)
 Time Tool Opened: 12:54:30
 Time Test Ended: 19:26:30
 Interval: **4368.00 ft (KB) To 4420.00 ft (KB) (TVD)**
 Total Depth: 4420.00 ft (KB) (TVD)
 Hole Diameter: 7.88 inches Hole Condition: Good
 Test Type: Conventional Bottom Hole (Reset)
 Tester: Chuck Kreuzer Jr.
 Unit No: 61
 Reference Elevations: 3255.00 ft (KB)
 3245.00 ft (CF)
 KB to GR/CF: 10.00 ft

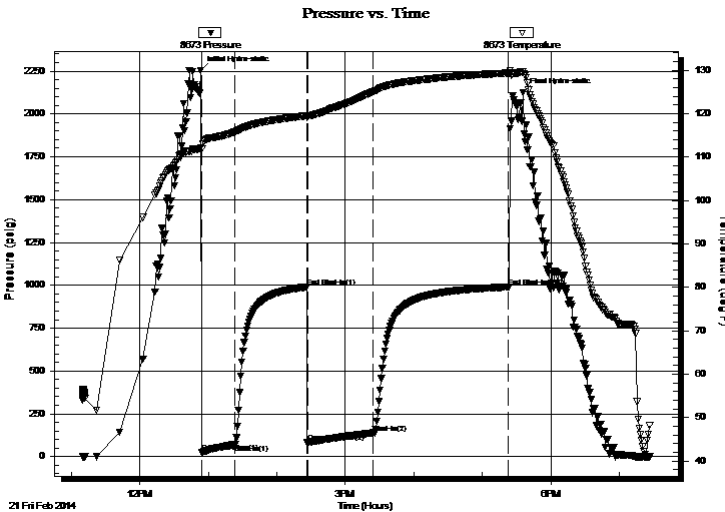
Serial #: 8673

Inside

Press@RunDepth: 138.70 psig @ 4369.00 ft (KB) Capacity: 8000.00 psig
 Start Date: 2014.02.21 End Date: 2014.02.21 Last Calib.: 2014.02.21
 Start Time: 11:10:01 End Time: 19:26:30 Time On Btm: 2014.02.21 @ 12:53:30
 Time Off Btm: 2014.02.21 @ 17:35:30

TEST COMMENT: IF: Weak blow built to 2 in. over 30 mins.
 IS: No blow back
 FF: Weak blow built to 2 in. over 60 mins.
 FS: No blow back

PRESSURE SUMMARY



Time (Min.)	Pressure (psig)	Temp (deg F)	Annotation
0	2254.22	112.12	Initial Hydro-static
1	23.31	111.90	Open To Flow (1)
30	72.11	115.83	Shut-In(1)
93	990.25	119.56	End Shut-In(1)
94	83.38	119.40	Open To Flow (2)
151	138.70	125.03	Shut-In(2)
270	990.60	129.37	End Shut-In(2)
282	2124.78	129.66	Final Hydro-static

Recovery

Length (ft)	Description	Volume (bbl)
188.00	ocm-30%o70%m	0.92
50.00	mco-30%m70%o	0.25
14.00	oil on top	0.07
0.00	134 ft gas in pipe	0.00

* Recovery from multiple tests

Gas Rates

Choke (inches)	Pressure (psig)	Gas Rate (Mcf/d)



**TRILOBITE
TESTING, INC.**

DRILL STEM TEST REPORT

Murfin Drilling Co.

25 1s 36w Rawlins, KS

250 N. Water Ste.300
Wichita KS .67202

Burk Trust 'J' #1-25

Job Ticket: 56794

DST#: 3

ATTN: Chuck Schmaltz

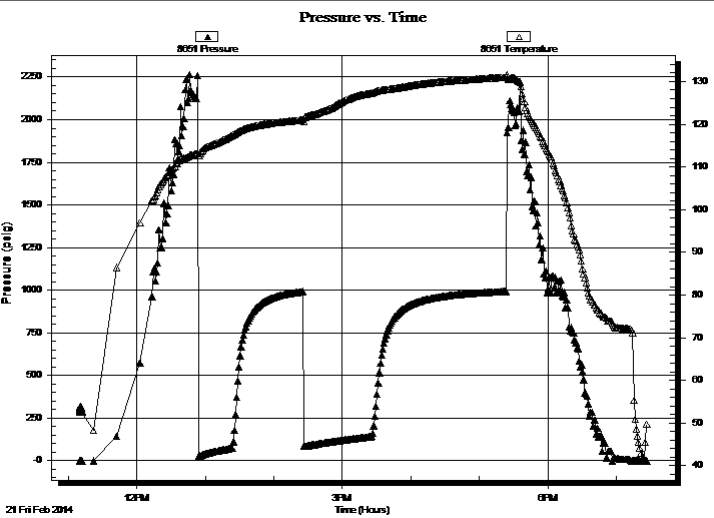
Test Start: 2014.02.21 @ 11:10:00

GENERAL INFORMATION:

Formation:	LKC-J		
Deviated:	No Whipstock:	ft (KB)	Test Type: Conventional Bottom Hole (Reset)
Time Tool Opened:	12:54:30		Tester: Chuck Kreutzer Jr.
Time Test Ended:	19:26:30		Unit No: 61
Interval:	4368.00 ft (KB) To 4420.00 ft (KB) (TVD)	Reference Elevations:	3255.00 ft (KB)
Total Depth:	4420.00 ft (KB) (TVD)		3245.00 ft (CF)
Hole Diameter:	7.88 inches	Hole Condition: Good	KB to GR/CF: 10.00 ft

Serial #: 8651 Outside		Capacity:	8000.00 psig
Press@RunDepth:	psig @ 4369.00 ft (KB)	Last Calib.:	2014.02.21
Start Date:	2014.02.21	End Date:	2014.02.21
Start Time:	11:10:01	End Time:	19:26:30
		Time On Btm:	
		Time Off Btm:	

TEST COMMENT: IF: Weak blow built to 2 in. over 30 mins.
IS: No blow back
FF: Weak blow built to 2 in. over 60 mins.
FS: No blow back



PRESSURE SUMMARY

Time (Min.)	Pressure (psig)	Temp (deg F)	Annotation

Recovery

Length (ft)	Description	Volume (bbl)
188.00	ocm-30%o70%m	0.92
50.00	mco-30%m70%o	0.25
14.00	oil on top	0.07
0.00	134 ft gas in pipe	0.00

* Recovery from multiple tests

Gas Rates

	Choke (inches)	Pressure (psig)	Gas Rate (Mcf/d)



**TRILOBITE
TESTING, INC**

DRILL STEM TEST REPORT

TOOL DIAGRAM

Murfin Drilling Co.

25 1s 36w Rawlins,KS

250 N. Water Ste.300
Wichita KS .67202

Burk Trust 'J' #1-25

Job Ticket: 56794

DST#: 3

ATTN: Chuck Schmaltz

Test Start: 2014.02.21 @ 11:10:00

Tool Information

Drill Pipe:	Length: 3802.00 ft	Diameter: 3.80 inches	Volume: 53.33 bbl	Tool Weight: 2600.00 lb
Heavy Wt. Pipe:	Length: 0.00 ft	Diameter: 0.00 inches	Volume: 0.00 bbl	Weight set on Packer: 25000.00 lb
Drill Collar:	Length: 558.00 ft	Diameter: 2.25 inches	Volume: 2.74 bbl	Weight to Pull Loose: 90000.00 lb
			<u>Total Volume: 56.07 bbl</u>	Tool Chased 2.00 ft
Drill Pipe Above KB:	20.00 ft			String Weight: Initial 80000.00 lb
Depth to Top Packer:	4368.00 ft			Final 82000.00 lb
Depth to Bottom Packer:	ft			
Interval between Packers:	52.00 ft			
Tool Length:	80.00 ft			
Number of Packers:	2	Diameter: 6.75 inches		

Tool Comments:

Tool Description

Length (ft) Serial No. Position Depth (ft) Accum. Lengths

Tool Description	Length (ft)	Serial No.	Position	Depth (ft)	Accum. Lengths
Shut In Tool	5.00			4345.00	
Hydraulic tool	5.00			4350.00	
Jars	5.00			4355.00	
Safety Joint	3.00			4358.00	
Packer	5.00			4363.00	28.00 Bottom Of Top Packer
Packer	5.00			4368.00	
Packer - Shale	0.00			4368.00	
Stubb	1.00			4369.00	
Recorder	0.00	8673	Inside	4369.00	
Recorder	0.00	8651	Outside	4369.00	
Perforations	14.00			4383.00	
change Over Sub	1.00			4384.00	
Drill Pipe	32.00			4416.00	
Change Over Sub	1.00			4417.00	
Bullnose	3.00			4420.00	52.00 Bottom Packers & Anchor

Total Tool Length: 80.00



**TRILOBITE
TESTING, INC**

DRILL STEM TEST REPORT

FLUID SUMMARY

Murfin Drilling Co.

25 1s 36w Rawlins,KS

250 N. Water Ste.300
Wichita KS .67202

Burk Trust 'J' #1-25

Job Ticket: 56794

DST#: 3

ATTN: Chuck Schmaltz

Test Start: 2014.02.21 @ 11:10:00

Mud and Cushion Information

Mud Type: Gel Chem

Cushion Type:

Oil API:

deg API

Mud Weight: 10.00 lb/gal

Cushion Length:

ft

Water Salinity:

ppm

Viscosity: 53.00 sec/qt

Cushion Volume:

bbbl

Water Loss: 7.59 in³

Gas Cushion Type:

Resistivity: ohm.m

Gas Cushion Pressure:

psig

Salinity: 1100.00 ppm

Filter Cake: 2.00 inches

Recovery Information

Recovery Table

Length ft	Description	Volume bbl
188.00	ocm-30%o70%m	0.925
50.00	mco-30%m70%o	0.246
14.00	oil on top	0.069
0.00	134 ft gas in pipe	0.000

Total Length: 252.00 ft

Total Volume: 1.240 bbl

Num Fluid Samples: 0

Num Gas Bombs: 0

Serial #:

Laboratory Name:

Laboratory Location:

Recovery Comments:

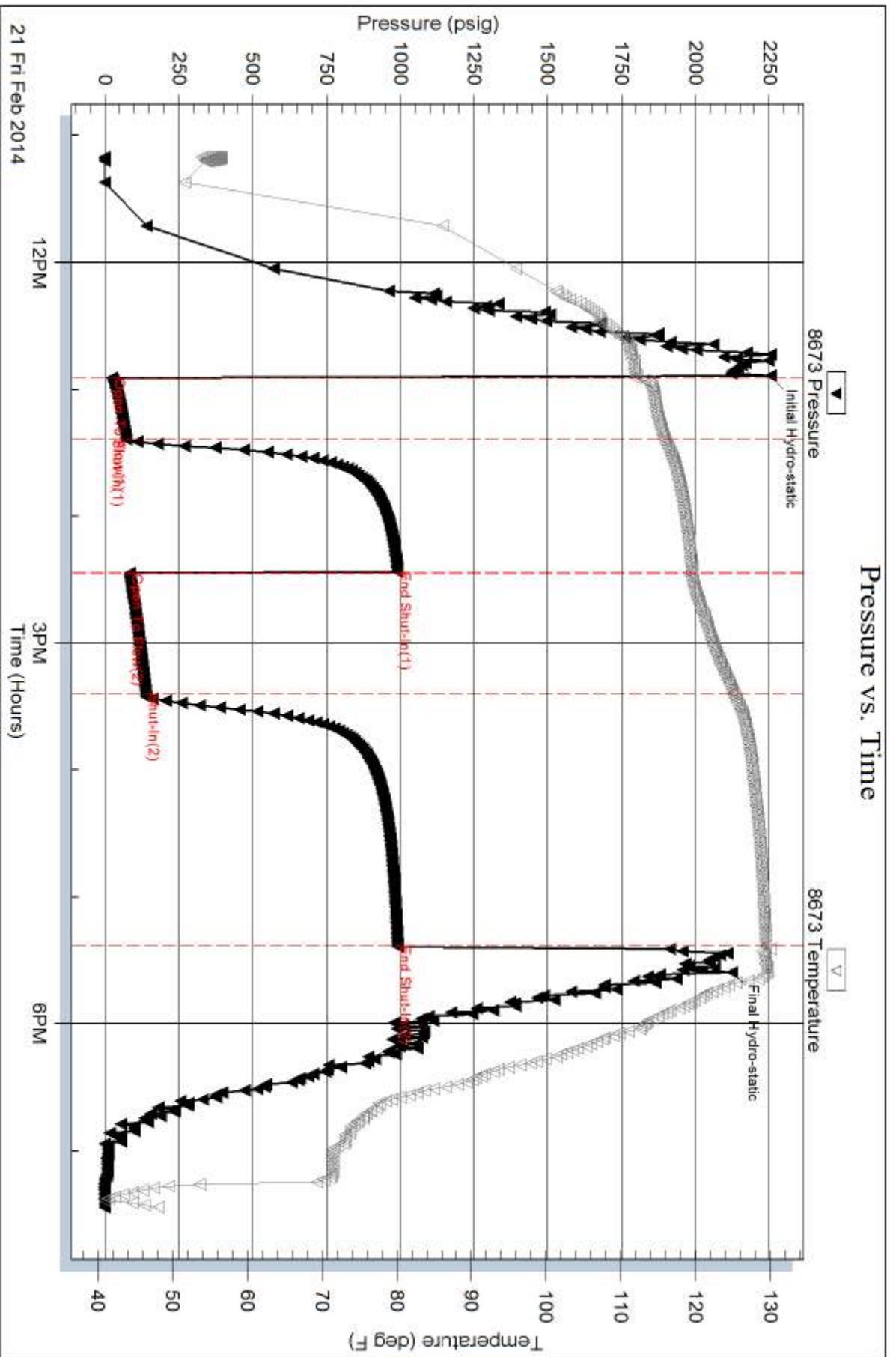
Serial #: 8673

Inside

Murfin Drilling Co.

Burk Trust 'J' #1-25

DST Test Number: 3

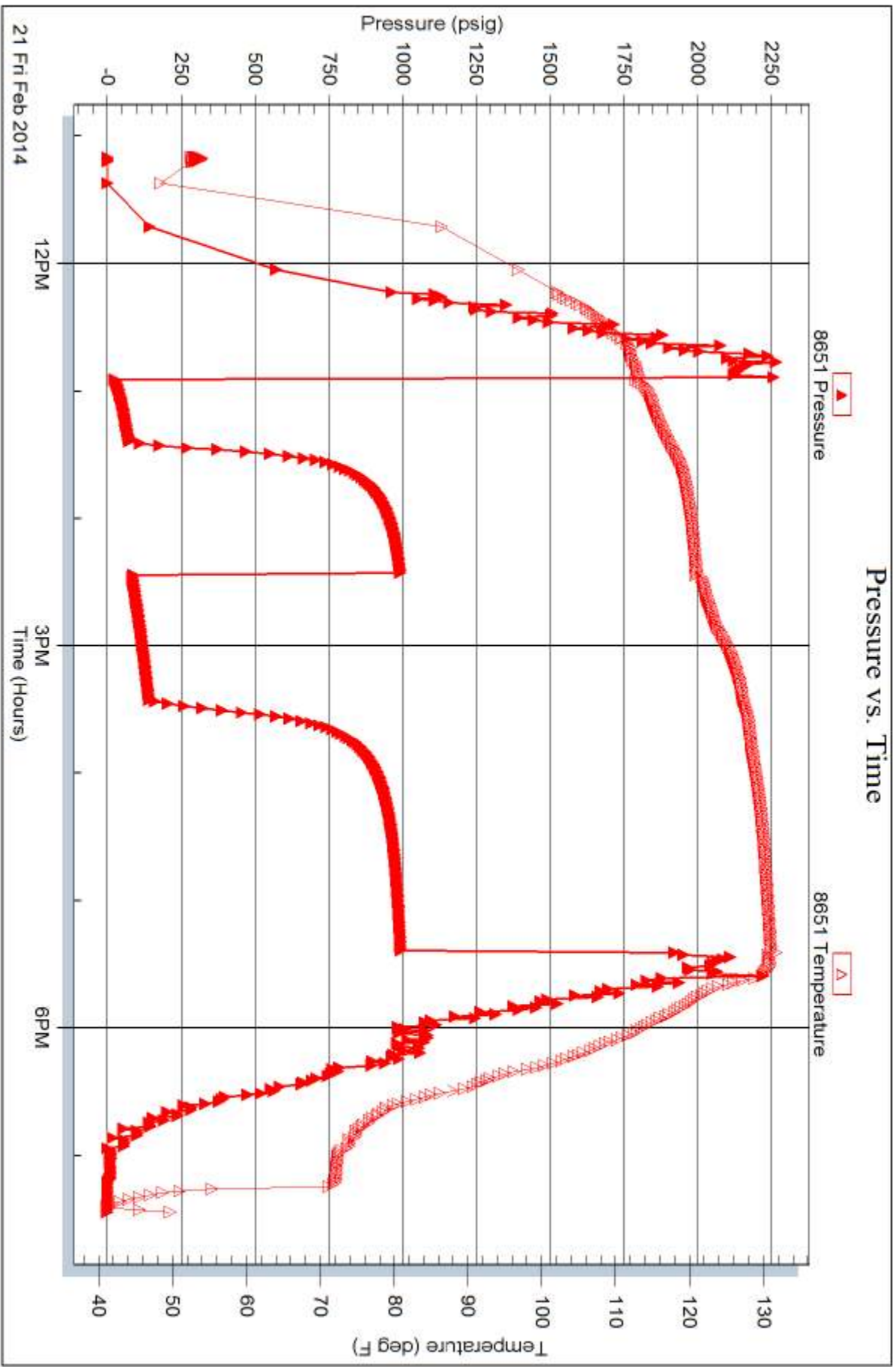


Serial #: 8651

Outside Murfin Drilling Co.

Burk Trust 'J' #1-25

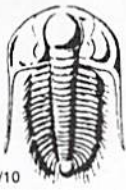
DST Test Number: 3



Trilobite Testing, Inc

Ref. No: 56794

Printed: 2014.03.03 @ 10:58:17



TRILOBITE TESTING INC.

1515 Commerce Parkway • Hays, Kansas 67601

Test Ticket

NO. **56792**

Well Name & No. Burk Trust 'J' #1-25 Test No. 1 Date 2-19-14
 Company Murfin Drilling Co. Elevation 3255 KB 3245 GL
 Address 250 N. water ste. 300 Wichita Ks 67202
 Co. Rep / Geo. check Rig Murfin #14
 Location: Sec. 25 Twp. 15 Rge. 36W Co. Rawlins State Ks

Interval Tested 4142 4270 Zone Tested LKC-A-D
 Anchor Length 128 Drill Pipe Run 3585 Mud Wt. 9.0
 Top Packer Depth 4137 Drill Collars Run 558 Vis 80
 Bottom Packer Depth 4142 Wt. Pipe Run 0 WL 6.4
 Total Depth 4270 Chlorides 700 ppm System LCM 4#

Blow Description IF: strong blow, Built to B.O. Bin 4 mins.
ISI: Bled off, Weak blow back, Built to 1/4 in. over 20 mins. Dead in 60 mins.
FF: strong blow, Built to B.O. B in 7 mins.
FSE: Bled off: No blow back

Rec	Feet of	%gas	%oil	%water	%mud
<u>198</u>	Feet of <u>ocmw</u>		<u>15</u>	<u>20</u>	<u>65</u>
<u>564</u>	Feet of <u>wcm</u>			<u>50</u>	<u>50</u>
<u>194</u>	Feet of <u>wcm</u>			<u>60</u>	<u>40</u>
<u>588</u>	Feet of <u>mcw</u>			<u>90</u>	<u>10</u>
<u>0</u>	Feet of <u>94 ft. gas into pipe</u>				

Rec Total 1509 ~~1509~~ BHT _____ Gravity _____ API RW _____ @ _____ ° F Chlorides _____ ppm

(A) Initial Hydrostatic <u>2199</u>	<input checked="" type="checkbox"/> Test <u>1250</u>	T-On Location <u>12:30</u>
(B) First Initial Flow <u>82</u>	<input checked="" type="checkbox"/> Jars <u>250</u>	T-Started <u>13:15</u>
(C) First Final Flow <u>482</u>	<input checked="" type="checkbox"/> Safety Joint <u>75</u>	T-Open <u>15:35</u>
(D) Initial Shut-In <u>1069</u>	<input type="checkbox"/> Circ Sub _____	T-Pulled <u>19:40</u>
(E) Second Initial Flow <u>492</u>	<input type="checkbox"/> Hourly Standby _____	T-Out <u>22:35</u>
(F) Second Final Flow <u>663</u>	<input checked="" type="checkbox"/> Mileage <u>12.27 = 12.4 x 1.55</u> 192.20	Comments _____
(G) Final Shut-In <u>997</u>	<input type="checkbox"/> Sampler _____	<input type="checkbox"/> Ruined Shale Packer _____
(H) Final Hydrostatic <u>2039</u>	<input type="checkbox"/> Straddle _____	<input type="checkbox"/> Ruined Packer _____
Initial Open <u>30</u>	<input checked="" type="checkbox"/> Shale Packer <u>250</u>	<input type="checkbox"/> Extra Copies _____
Initial Shut-In <u>60</u>	<input type="checkbox"/> Extra Packer _____	Sub Total <u>0</u>
Final Flow <u>80</u>	<input type="checkbox"/> Extra Recorder _____	Total <u>2017.20</u>
Final Shut-In <u>90</u>	<input type="checkbox"/> Day Standby _____	MP/DST Disc't _____
	<input type="checkbox"/> Accessibility _____	
	Sub Total <u>2017.20</u>	

Approved By _____ Our Representative Chad Taylor
 TriLOBITE TESTING INC. shall not be liable for damaged of any kind of the property or personnel of the one for whom a test is made, or for any loss suffered or sustained, directly or indirectly, through the use of its equipment, or its statements or opinion concerning the results of any test, tools lost or damaged in the hole shall be paid for at cost by the party for whom the test is made.



TRILOBITE TESTING INC.

1515 Commerce Parkway • Hays, Kansas 67601

Test Ticket

NO. 56793

Well Name & No. Burk Trust '5' #1-25 Test No. 2 Date 2-20-2014
 Company Murfin Drilling Co Elevation 3255 KB 3245 GL
 Address 250 N. Water Ste. 300 Wichita Ks. 67202
 Co. Rep / Geo. chuck Rig Murfin #14
 Location: Sec. 25 Twp. 15 Rge. 36w Co. Rawlins State Ks

Interval Tested 4073 4385 Zone Tested LKC-E, F
 Anchor Length 112 Drill Pipe Run 3702 Mud Wt. 9.5
 Top Packer Depth 4267 Drill Collars Run 558 Vis 53
 Bottom Packer Depth 4273 Wt. Pipe Run - 0- WL 7.6
 Total Depth 4385 Chlorides 1,100 ppm System LCM 4#

Blow Description IF: Weak surface, Died in 22 mins.
ISI: No blow back
FF: No blow
FSE: No blow back

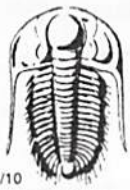
Rec	Feet of	%gas	%oil	%water	%mud
<u>20</u>	<u>Mud</u>			<u>100</u>	
Rec	Feet of	%gas	%oil	%water	%mud
Rec	Feet of	%gas	%oil	%water	%mud
Rec	Feet of	%gas	%oil	%water	%mud
Rec	Feet of	%gas	%oil	%water	%mud

Rec Total 20 BHT 124 Gravity _____ API RW _____ @ _____ °F Chlorides _____ ppm

(A) Initial Hydrostatic <u>2597</u>	<input checked="" type="checkbox"/> Test <u>1250</u>	T-On Location <u>14:17</u>
(B) First Initial Flow <u>21</u>	<input checked="" type="checkbox"/> Jars <u>250</u>	T-Started <u>14:18</u>
(C) First Final Flow <u>37</u>	<input checked="" type="checkbox"/> Safety Joint <u>75</u>	T-Open <u>19:48</u>
(D) Initial Shut-In <u>1228</u>	<input type="checkbox"/> Circ Sub _____	T-Pulled <u>23:15</u>
(E) Second Initial Flow <u>41</u>	<input checked="" type="checkbox"/> Hourly Standby <u>2 hrs</u> <u>200</u>	T-Out <u>2:02</u>
(F) Second Final Flow <u>53</u>	<input checked="" type="checkbox"/> Mileage <u>6242 = 124 x 1.55</u> <u>192.20</u>	Comments <u>Rig waited on wind</u>
(G) Final Shut-In <u>1173</u>	<input type="checkbox"/> Sampler _____	
(H) Final Hydrostatic <u>2248</u>	<input type="checkbox"/> Straddle _____	
Initial Open <u>30</u>	<input checked="" type="checkbox"/> Shale Packer <u>250</u>	<input type="checkbox"/> Ruined Shale Packer _____
Initial Shut-In <u>60</u>	<input type="checkbox"/> Extra Packer _____	<input type="checkbox"/> Ruined Packer _____
Final Flow <u>30</u>	<input type="checkbox"/> Extra Recorder _____	Sub Total <u>0</u>
Final Shut-In <u>60</u>	<input type="checkbox"/> Day Standby _____	Total <u>2217.20</u>
	<input type="checkbox"/> Accessibility _____	MP/DST Disc't _____
	Sub Total <u>2217.20</u>	

Approved By _____ Our Representative Chuck Riggs

Trilobite Testing Inc. shall not be liable for damaged of any kind of the property or personnel of the one for whom a test is made, or for any loss suffered or sustained, directly or indirectly, through the use of its equipment, or its statements or opinion concerning the results of any test, tools lost or damaged in the hole shall be paid for at cost by the party for whom the test is made.



TRILOBITE TESTING INC.

1515 Commerce Parkway • Hays, Kansas 67601

Test Ticket

56794

NO.

Well Name & No. Bark Trust 4' #1-25 Test No. 3 Date 2-21-2014
 Company Murfin Drilling Co Elevation 3255 KB 2245 GL
 Address 250 N. Water Ste - 300 Wichita Ks 67202
 Co. Rep / Geo. Chuck Rig Murfin #14
 Location: Sec. 25 Twp. 15 Rge. 36w Co. Rawlins State Ks

Interval Tested 4368 4420 Zone Tested LRC-5
 Anchor Length 52 Drill Pipe Run 3802 Mud Wt. 9.5
 Top Packer Depth 4363 4368 Drill Collars Run 558 Vis 53
 Bottom Packer Depth 4368 4373 Wt. Pipe Run -0- WL 7.6
 Total Depth 4420 4305 Chlorides 1,100 ppm System LCM 4#

Blow Description IFI weak blow built to 2 in over 30 min

ISI: No blow back

FF: Weak blow, built to 2 in. over 30 mins

FJI: No blow back

Rec	Feet of	%gas	%oil	%water	%mud
<u>10</u>	<u>gas & pipe 134</u>				
<u>14</u>	<u>oil on top</u>		<u>100%</u>		
<u>50</u>	<u>mco</u>		<u>70%</u>		<u>30%</u>
<u>188</u>	<u>ocm</u>		<u>30%</u>		<u>70%</u>
Rec	Feet of	%gas	%oil	%water	%mud

Rec Total 252 BHT 125 Gravity _____ API RW _____ @ _____ °F Chlorides _____ ppm

(A) Initial Hydrostatic 2254 Test 1250 T-On Location 11:08
 (B) First Initial Flow 23 Jars 250 T-Started 11:00
 (C) First Final Flow 70 Safety Joint 75 T-Open 12:54
 (D) Initial Shut-In 990 Circ Sub _____ T-Pulled 5:00
 (E) Second Initial Flow 83 Hourly Standby _____ T-Out 19:26
 (F) Second Final Flow 139 Mileage 62x124x1.55 192.20 Comments _____
 (G) Final Shut-In 991 Sampler _____
 (H) Final Hydrostatic 2125 Straddle _____
 Shale Packer _____ Ruined Shale Packer _____
 Extra Packer _____ Ruined Packer _____
 Extra Recorder _____
 Day Standby _____
 Accessibility _____

Initial Open 30
 Initial Shut-In 60
 Final Flow 80
 Final Shut-In 990

Sub Total 1767.20
 Total 1767.20
 MP/DST Disc't _____

Approved By _____ Our Representative Chuck