



Pioneer Energy Services

Microresistivity Log

API No.	15-009-25973-00-00	
Company	Kirby Krier Oil, Inc.	
Well	Robl #2	
Field	Cheyenne View	
County	Barton	State
Location	1980' FSL & 1980' FEL	
Sec:	12	Twp: 19S Rge: 12W
Other Services	CNL/CDL DIL	
Elevation	K.B. 1795 D.F. 1788 G.L. 1788	

Permanent Datum	Ground Level	Elevation 1788
Log Measured From	Kelly Bushing	7 Ft. Above Perm. Datum
Drilling Measured From	Kelly Bushing	
Date	5/22/2014	
Run Number	Two	
Depth Driller	3455	
Depth Logger	3453	
Bottom Logged Interval	3452	
Top Log Interval	2700	
Casing Driller	8.625 @ 264	
Casing Logger	261	
Bit Size	7.875	
Type Fluid in Hole	Chemical	
Salinity, ppm CL	17000	
Density / Viscosity	9.1	49
pH / Fluid Loss	10.0	11.2
Source of Sample	Flowline	
Rm @ Meas. Temp	0.12 @	66
Rmf @ Meas. Temp	0.09 @	66
Rmc @ Meas. Temp	0.16 @	66
Source of Rmf / Rmc	Charts	
Rm @ BHT	0.07 @	113
Operating Rig Time	3 Hours	
Max Rec. Temp. F	113	
Equipment Number	91	
Location	Hays	
Recorded By	D. Schmidt	
Witnessed By	Jim Mulsgrve	

<<< Fold Here >>>

All interpretations are opinions based on inferences from electrical or other measurements and we cannot and do not guarantee the accuracy or correctness of any interpretation, and we shall not, except in the case of gross or willful negligence on our part, be liable or responsible for any loss, costs, damages, or expenses incurred or sustained by anyone resulting from any interpretation made by any of our officers, agents or employees. These interpretations are also subject to our general terms and conditions set out in our current Price Schedule.

Comments

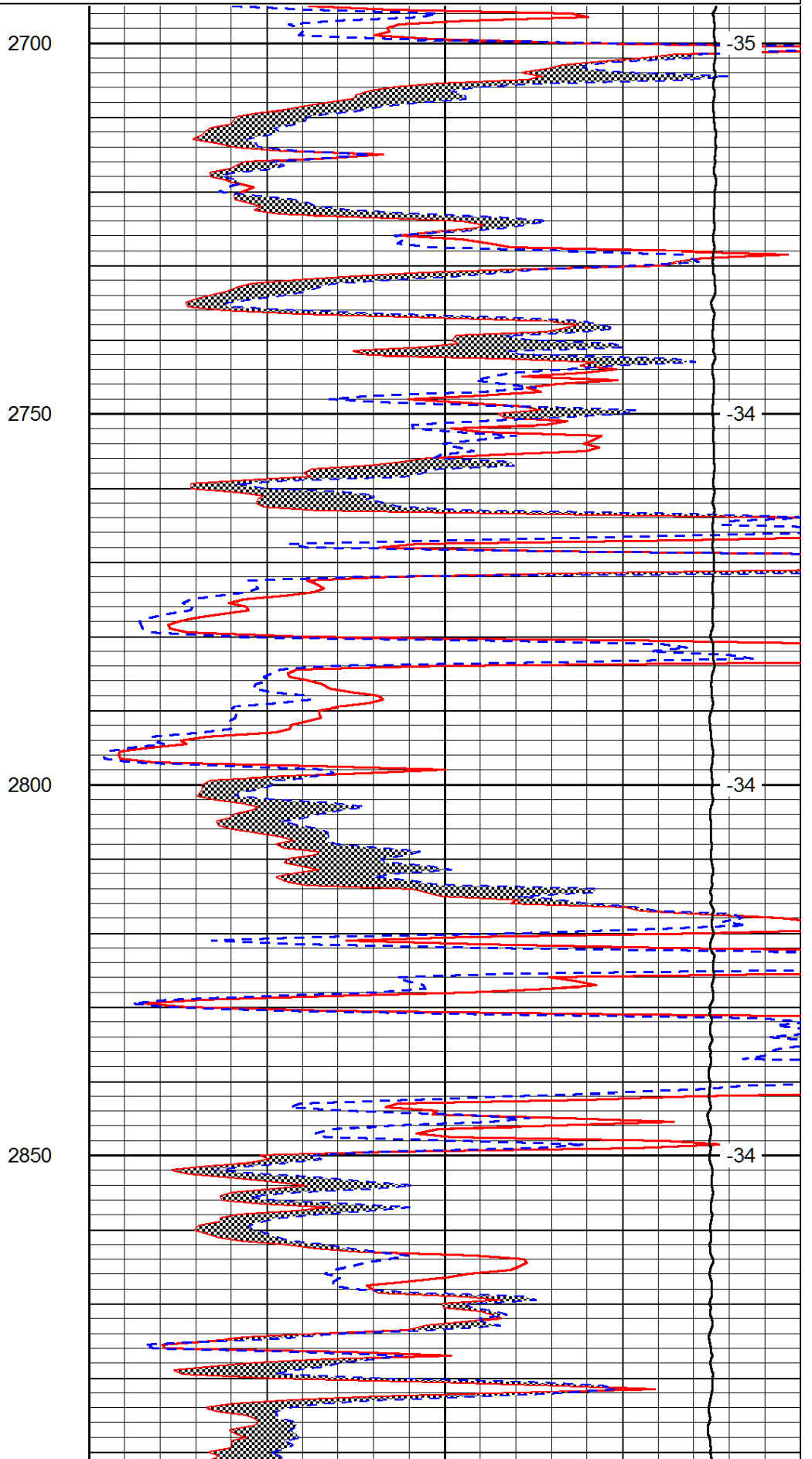
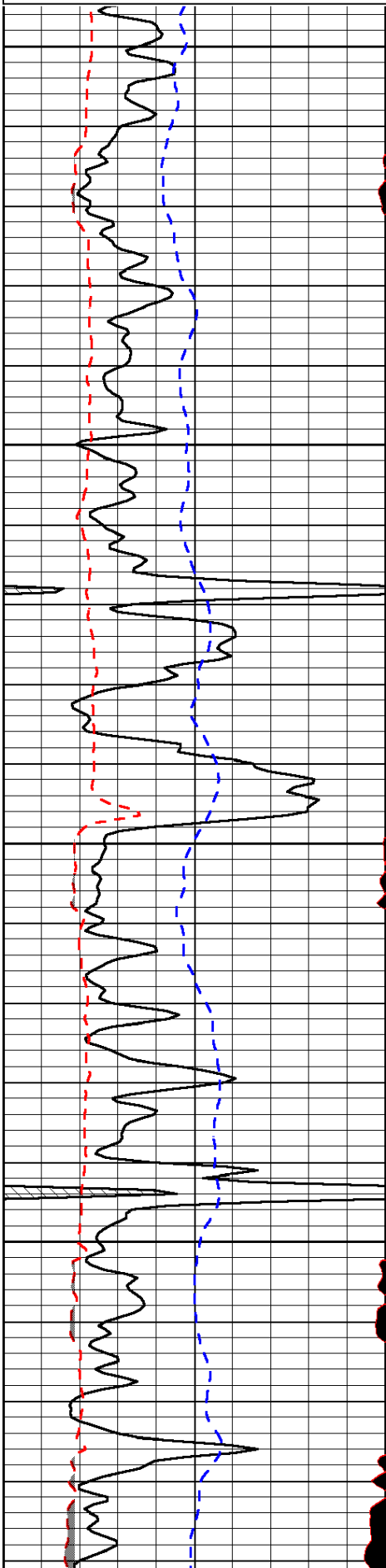
Thank you for using Log-Tech, Inc.
 (785) 625-3858
 Great Bend,
 Northeast on Hwy 156 to 30 Rd, 3 3/4 East,
 North into

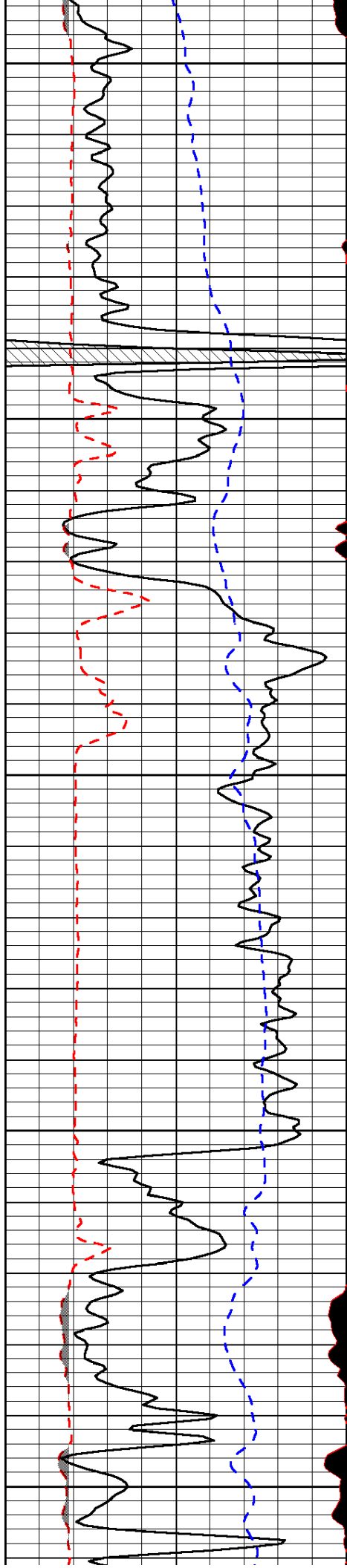
Database File: kirby_rob1_#1hd.db
 Dataset Pathname: dil/kkstack
 Presentation Format: micro
 Dataset Creation: Thu May 22 10:35:46 2014
 Charted by: Depth in Feet scaled 1:240

0	Gamma Ray	150
6	MCAL (GAPI)	16
2.875	Mud Cake (GAPI)	7.875
-200	SP (mV)	0

0	Micro Inverse 1 X 1	40
0	Micro Normal 2"	40
10000	Line Weight	0

LSPD





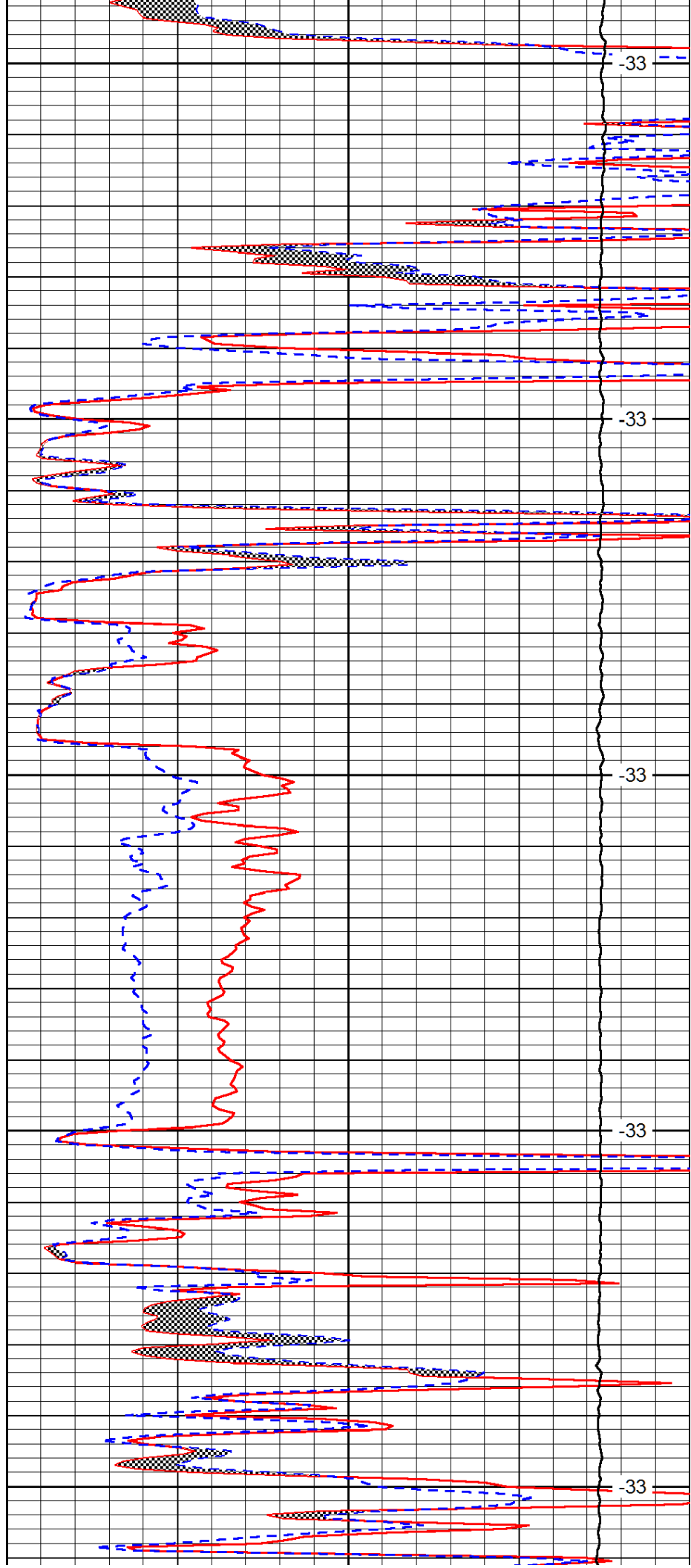
2900

2950

3000

3050

3100



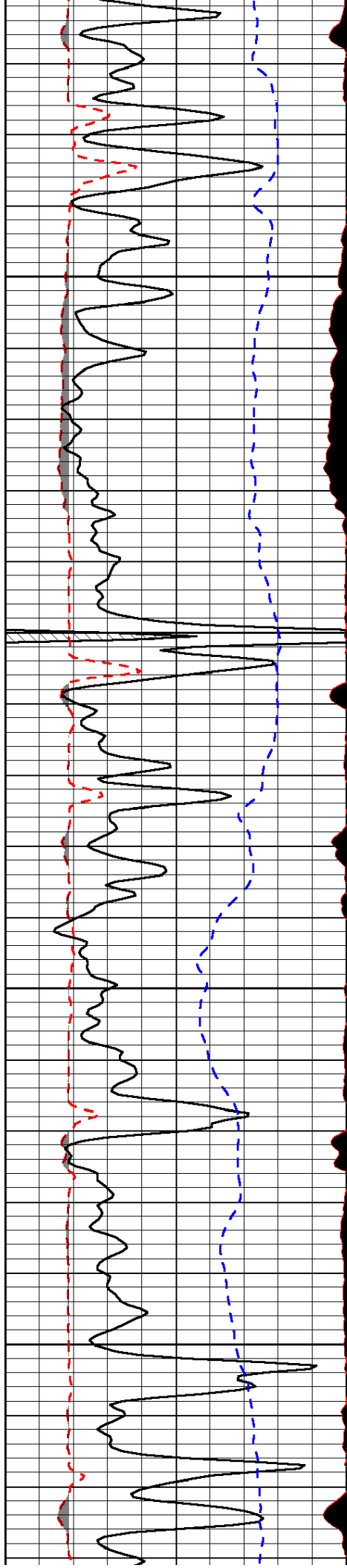
-33

-33

-33

-33

-33

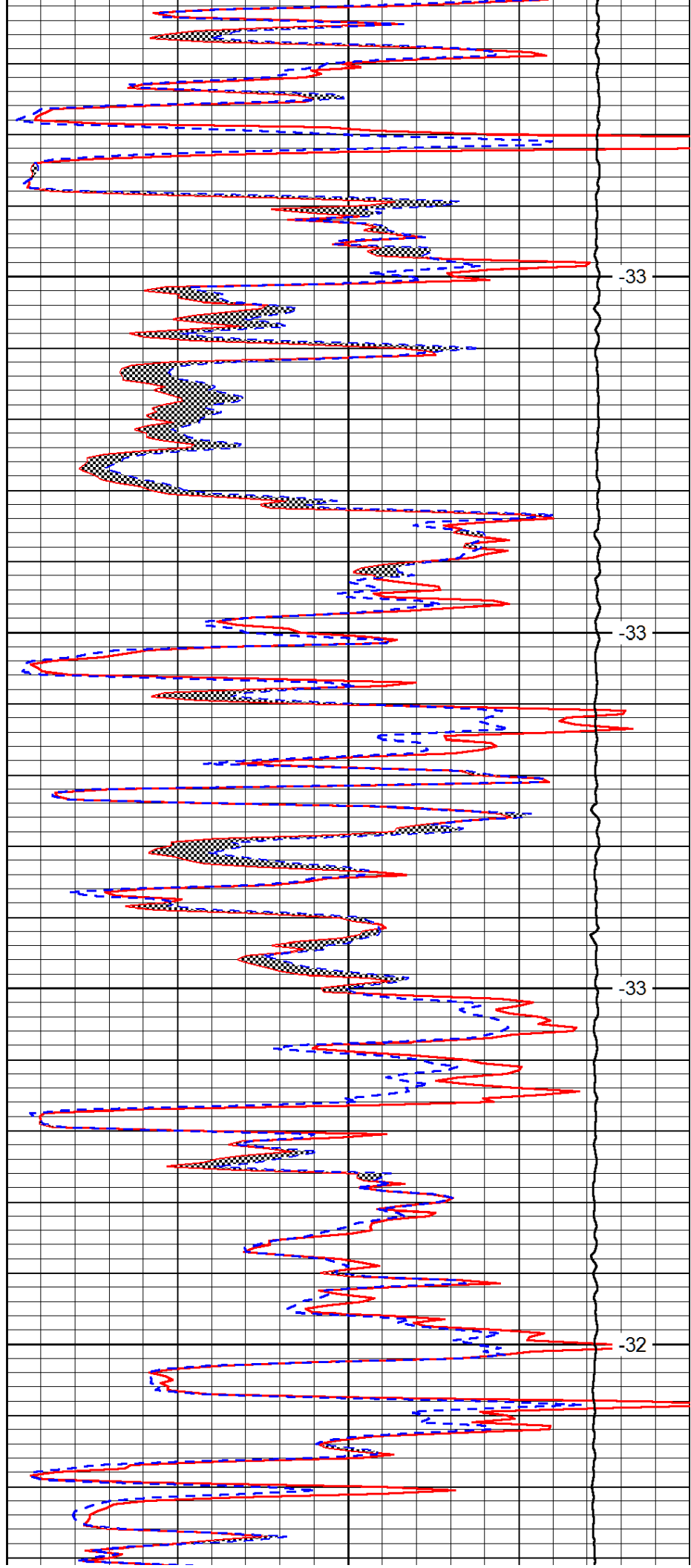


3150

3200

3250

3300

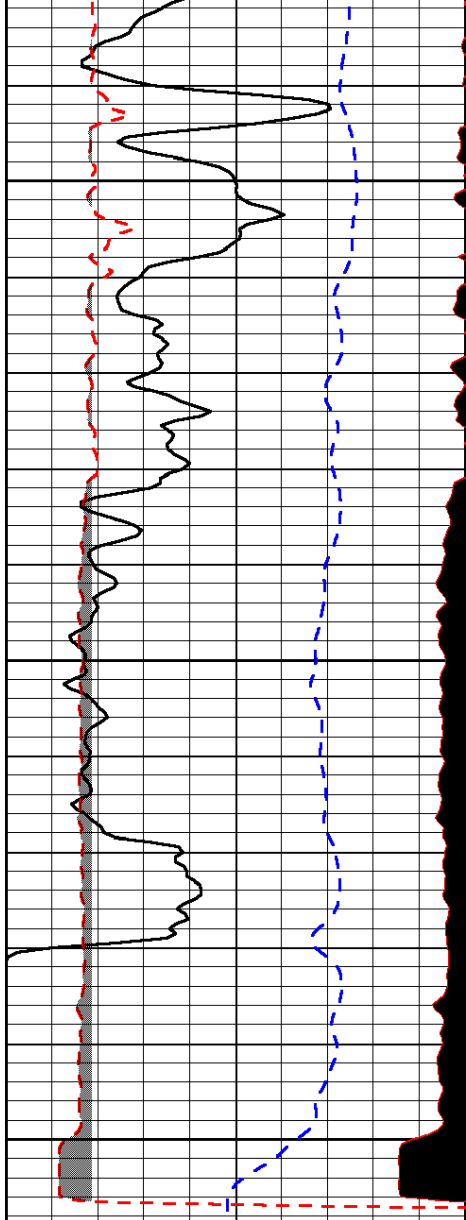


-33

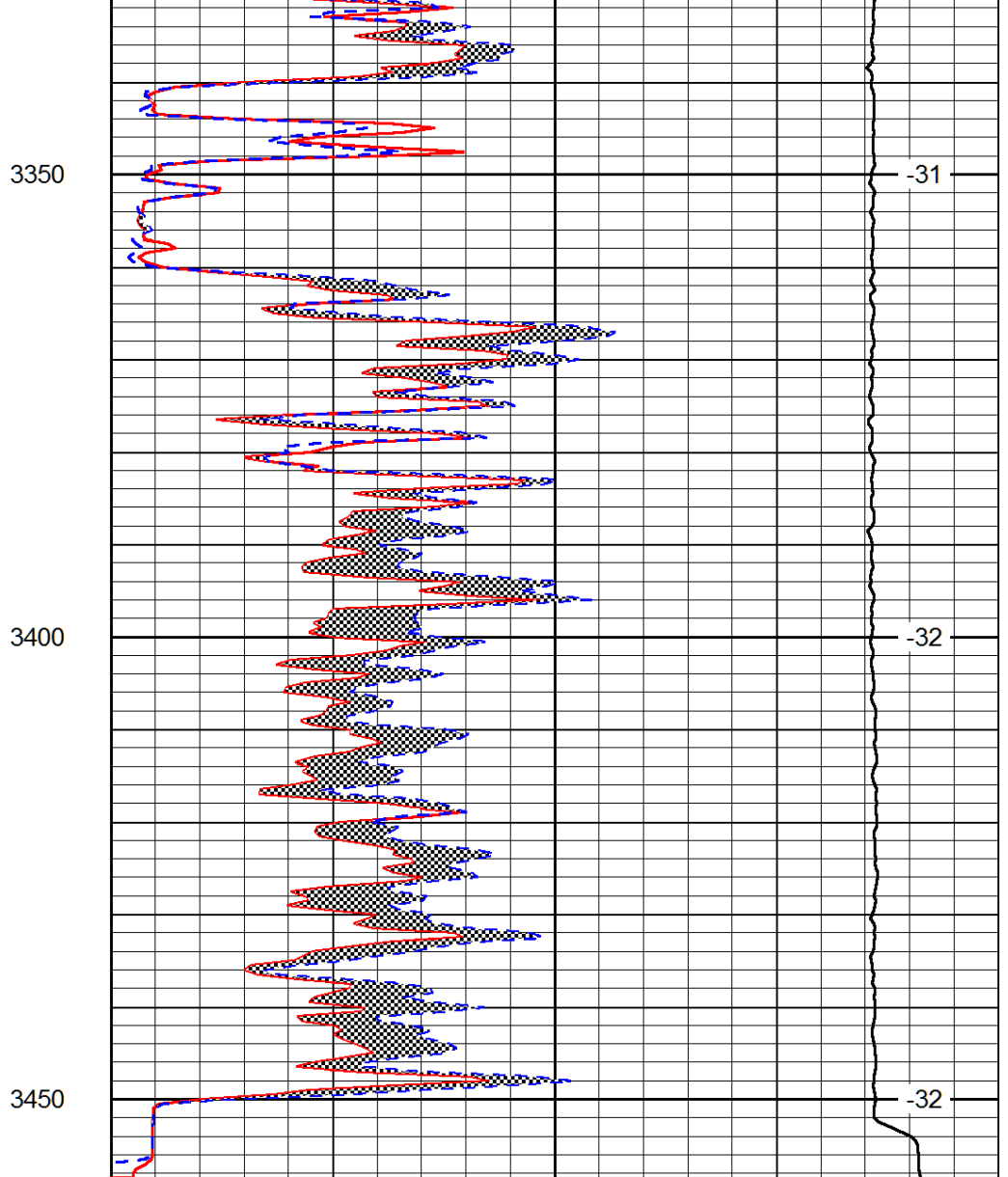
-33

-33

-32



0	Gamma Ray	150
6	MCAL (GAPI)	16
2.875	Mud Cake (GAPI)	7.875
-200	SP (mV)	0



0	Micro Inverse 1 X 1	40
0	Micro Normal 2''	40
10000	Line Weight	0

LSPD