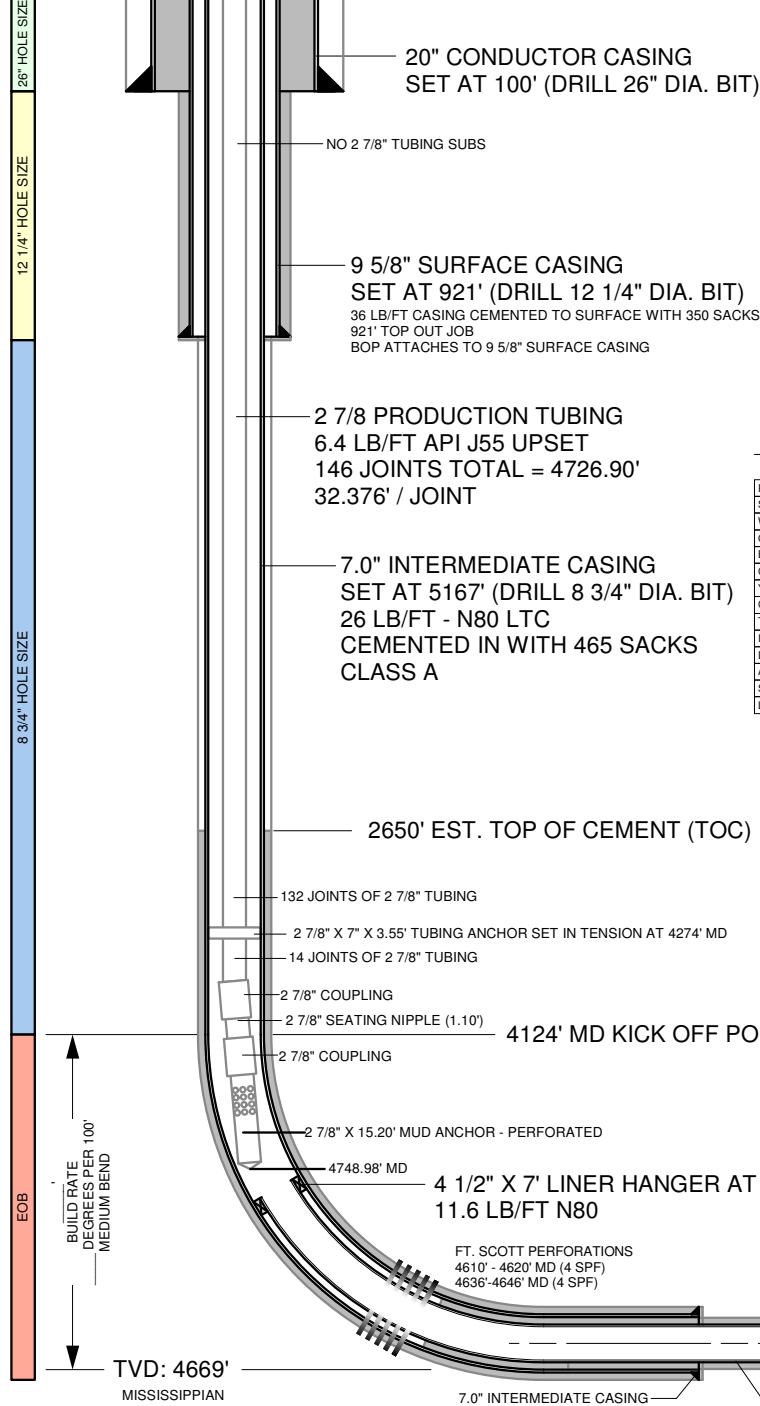


SURFACE TEMP: 90 DEG F
 7" X 2 7/8" TUBING HEAD
 SET TOP CLPG 12" AGL
 G.L. ELEVATION 2323' (SHL)
 KB: 23' -- KB ELEVATION: 2346'

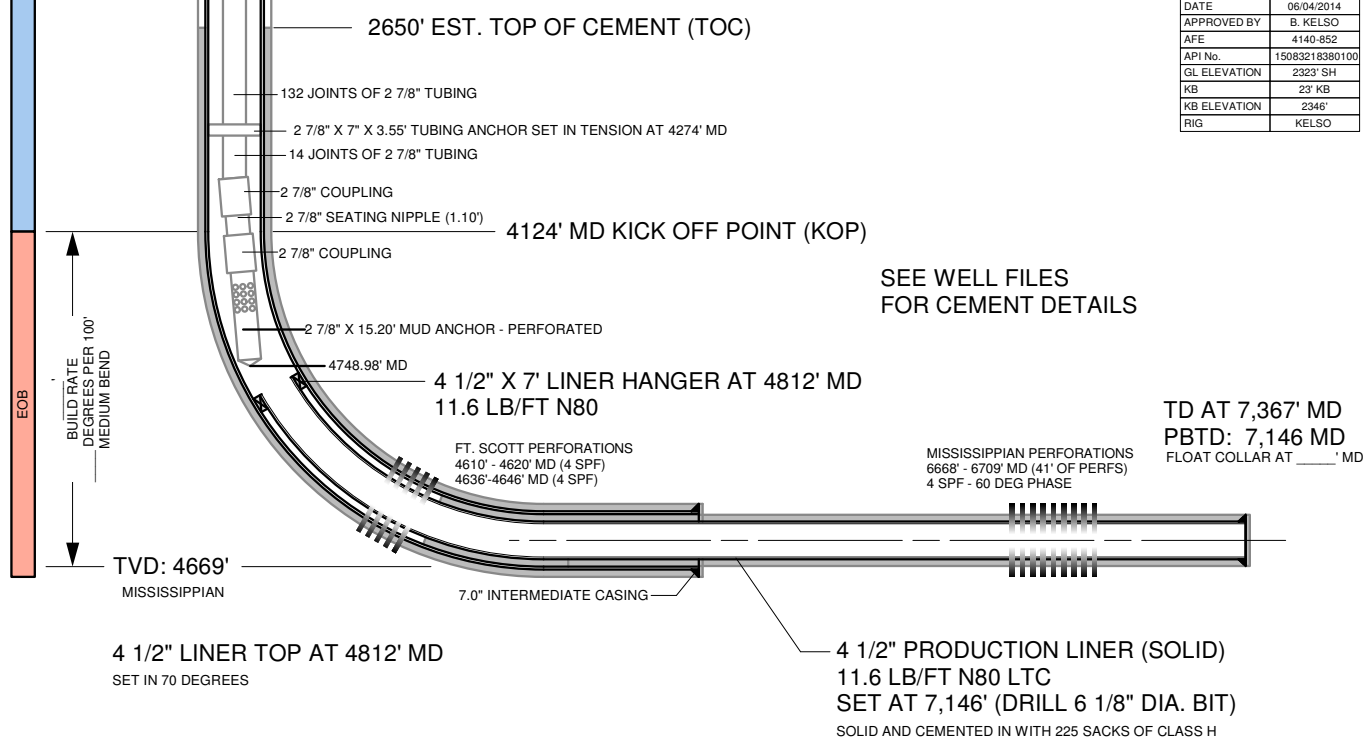


NOTES:
 PUMPING UNIT: C - 160 - 240 - 74 (74" SURFACE STROKE)
 CONVENTIONAL NATIONAL UNIT
 40 HP ELECTRIC MOTOR WITH 40 HP SPOCC VFD
 VFD INSTALLED - SINGLE PHASE TO THREE PHASE VFD
 RUN TIME: 24 HRS PER DAY
 1.25" X 14' POLISHED ROD WITH LINER ASSEMBLY (14' TOTAL)
 1.50" HARD FACED POLISHED ROD LINER X 8'
 2', 6', & 8' PONY RODS ON TOP (7/8" GRADE N97) (16' TOTAL)
 (71) 1825' OF 7/8" GRADE N97 SUCKER RODS (TOP TAPER) (1850' TOTAL)
 (113) 2775' OF 3/4" GRADE N97 SUCKER RODS (2875' TOTAL)
 (3) 75' 1.5000" SINKER BARS ON BOTTOM (75' TOTAL)
 ONE 2' X 7/8" GRADE N97 PONY ROD ON BOTTOM (TOP OF PUMP) (2' TOTAL)
 SPEED RANGE: 4 TO 13 SPM (CURRENT SPEED 13 SPM)

TUBULARS

PURPOSE	CONDUCTOR	SURFACE	INTERMEDIATE	SOLID LINER	PROD. TUBING
SIZE	20"	9 5/8"	7"	4 1/2"	2 7/8"
WEIGHT	94.00 LB/FT	36.0 LB/FT	28.00 LB/FT	15.50 LB/FT	6.40 LB/FT
GRADE	X-42	J-55	P-110 BUTTRESS	N-80	L-80
BURST	3,590 PSIG	3,520 PSIG	9,955 PSIG	10,480 PSIG	10,567 PSIG
COLLAPSE	N/A	2,020 PSIG	6,232 PSIG	11,080 PSIG	11,165 PSIG
YIELD	N/A	N/A	830,402 LBF	N/A	144,962 LBF
CAPACITY	0.355 BBL/S/FT	N/A	0.038 BBL/S/FT	N/A	0.243 GAL/FT
THICKNESS	0.4380"	0.3520"	0.3620"	0.3370"	0.2170"
ID	19.1240"	8.92100"	6.2760"	3.8260"	2.4410"
DRIFT ID	N/A	N/A	6.1510"	N/A	2.3470"
AREA	287.2423 IN2	N/A	30.9355 IN2	N/A	4.6798 IN2
SETTING DEPTH	100'	921'	5,167'	7,146'	4,727' TO SN
LENGTH	100'	921'	5,167'	7,146'	4,727'

DATE	06/04/2014
APPROVED BY	B. KELSO
AFE	4140-852
API No.	15083218380100
GL ELEVATION	2323' SH
KB	23' KB
KB ELEVATION	2346'
RIG	KELSO



SEE WELL FILES FOR CEMENT DETAILS

TD AT 7,367' MD
 PBTD: 7,146 MD
 FLOAT COLLAR AT ____' MD

4 1/2" LINER TOP AT 4812' MD
 SET IN 70 DEGREES

4 1/2" PRODUCTION LINER (SOLID)
 11.6 LB/FT N80 LTC
 SET AT 7,146' (DRILL 6 1/8" DIA. BIT)
 SOLID AND CEMENTED IN WITH 225 SACKS OF CLASS H

STALLINGS UNIT #1-33H
 HODGEMAN COUNTY, KANSAS
 SHL: 200 FNL, 600 FEL
 BHL: 330' FSL, 660 FEL
 API NO.: 15-083-21838-0100

DOWN HOLE SUCKER ROD PUMP:
 2.0000" RWT INSERT PUMP (2.5 X 2 X 16) (130" MAX STROKE)
 PUMP LENGTH: 16' (NICARD AND SS)
 BOTTOM HOLD DOWN TYPE
 TRAVELING BARREL
 2' X 7/8" (N97) PONY ROD ON TOP OF PUMP
 6" GAS SEPARATOR ON THE BOTTOM
 PUMP INTAKE DEPTH: 4738'
 PUMP IS SETTING ABOVE LATERAL IN CURVE IN 61 DEGREES

