



DRILL STEM TEST REPORT

Prepared For: **Cobalt Energy, LLC**

PO Box 8037
Wichita, KS 67208

ATTN: Corey Baker

KT Unit 'A' #1-18

18-10s-24w Graham,KS

Start Date: 2014.04.05 @ 21:40:00

End Date: 2014.04.06 @ 06:21:15

Job Ticket #: 56985 DST #: 1

Trilobite Testing, Inc
PO Box 362 Hays, KS 67601
ph: 785-625-4778 fax: 785-625-5620

Printed: 2014.04.10 @ 11:39:09



TRILOBITE TESTING, INC

DRILL STEM TEST REPORT

Cobalt Energy, LLC

18-10s-24w Graham,KS

PO Box 8037
Wichita, KS 67208

KT Unit 'A' #1-18

Job Ticket: 56985

DST#: 1

ATTN: Corey Baker

Test Start: 2014.04.05 @ 21:40:00

GENERAL INFORMATION:

Formation: **LKC "C"**

Deviated: No Whipstock: ft (KB)

Time Tool Opened: 00:07:30

Time Test Ended: 06:21:15

Test Type: Conventional Bottom Hole (Initial)

Tester: James Winder

Unit No: 57

Interval: 3792.00 ft (KB) To 3815.00 ft (KB) (TVD)

Reference Elevations: 2478.00 ft (KB)

Total Depth: 3815.00 ft (KB) (TVD)

2469.00 ft (CF)

Hole Diameter: 7.88 inches Hole Condition: Fair

KB to GR/CF: 9.00 ft

Serial #: 8671

Inside

Press@RunDepth: 165.76 psig @ 3793.00 ft (KB)

Capacity: 8000.00 psig

Start Date: 2014.04.05

End Date:

2014.04.06

Last Calib.:

2014.04.06

Start Time:

21:40:05

End Time:

06:21:15

Time On Btm:

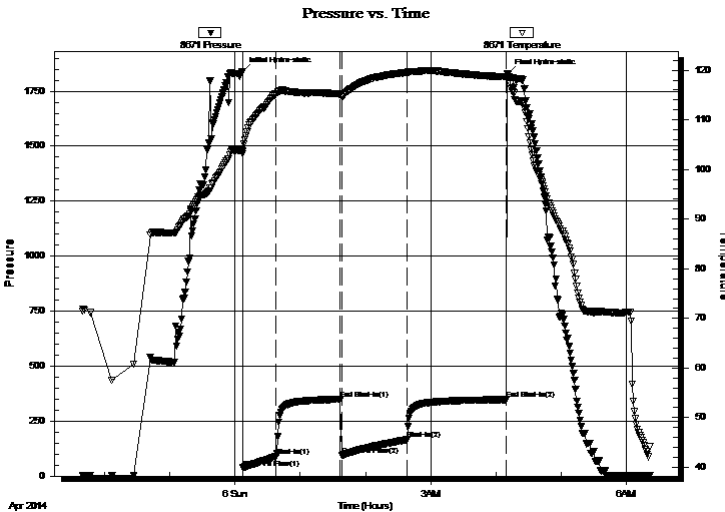
2014.04.06 @ 00:07:00

Time Off Btm:

2014.04.06 @ 04:11:15

TEST COMMENT: 30 - IF: Blow built to BOB (11") in 3 1/2 min.
60 - IS: Blow back built to 9 1/2"
60 - FF: Blow built to BOB in 6 min.
90 - FS: Blow back built to BOB at 26 min.

PRESSURE SUMMARY



Time (Min.)	Pressure (psig)	Temp (deg F)	Annotation
0	1840.39	103.71	Initial Hydro-static
1	37.69	103.69	Open To Flow (1)
31	88.82	115.31	Shut-In(1)
90	349.51	115.15	End Shut-In(1)
92	94.38	114.71	Open To Flow (2)
152	165.76	119.54	Shut-In(2)
243	348.03	118.64	End Shut-In(2)
245	1828.39	118.67	Final Hydro-static

Recovery

Length (ft)	Description	Volume (bbl)
63.00	GOM 46%g, 33%m, 21%o	0.88
127.00	GMCO 49%o, 38%g, 13%m	1.78
190.00	CGO 52%o, 46%g, 2%m	2.67
10.00	CO 98%o, 2%g	0.14
0.00	GIP = 1575'	0.00

Gas Rates

	Choke (inches)	Pressure (psig)	Gas Rate (Mcf/d)



**TRILOBITE
TESTING, INC**

DRILL STEM TEST REPORT

TOOL DIAGRAM

Cobalt Energy, LLC

18-10s-24w Graham,KS

PO Box 8037
Wichita, KS 67208

KT Unit 'A' #1-18

Job Ticket: 56985

DST#: 1

ATTN: Corey Baker

Test Start: 2014.04.05 @ 21:40:00

Tool Information

Drill Pipe:	Length: 3793.00 ft	Diameter: 3.80 inches	Volume: 53.21 bbl	Tool Weight:	2500.00 lb
Heavy Wt. Pipe:	Length: 0.00 ft	Diameter: 0.00 inches	Volume: 0.00 bbl	Weight set on Packer:	25000.00 lb
Drill Collar:	Length: 0.00 ft	Diameter: 0.00 inches	Volume: 0.00 bbl	Weight to Pull Loose:	60000.00 lb
			<u>Total Volume: 53.21 bbl</u>	Tool Chased	2.00 ft
Drill Pipe Above KB:	29.00 ft			String Weight: Initial	45000.00 lb
Depth to Top Packer:	3792.00 ft			Final	46000.00 lb
Depth to Bottom Packer:	ft				
Interval between Packers:	23.00 ft				
Tool Length:	51.00 ft				
Number of Packers:	2	Diameter: 6.75 inches			

Tool Comments: Tool slid 2' before open - Chased 2' to bottom at open - very little mud loss

Tool Description	Length (ft)	Serial No.	Position	Depth (ft)	Accum. Lengths
------------------	-------------	------------	----------	------------	----------------

Shut In Tool	5.00			3769.00	
Hydraulic tool	5.00			3774.00	
Jars	5.00			3779.00	
Safety Joint	3.00			3782.00	
Packer	5.00			3787.00	28.00 Bottom Of Top Packer
Packer	5.00			3792.00	
Stubb	1.00			3793.00	
Recorder	0.00	8671	Inside	3793.00	
Recorder	0.00	8320	Outside	3793.00	
Perforations	19.00			3812.00	
Bullnose	3.00			3815.00	23.00 Bottom Packers & Anchor

Total Tool Length: 51.00



**TRILOBITE
TESTING, INC**

DRILL STEM TEST REPORT

FLUID SUMMARY

Cobalt Energy, LLC

18-10s-24w Graham,KS

PO Box 8037
Wichita, KS 67208

KT Unit 'A' #1-18

Job Ticket: 56985

DST#: 1

ATTN: Corey Baker

Test Start: 2014.04.05 @ 21:40:00

Mud and Cushion Information

Mud Type: Gel Chem

Cushion Type:

Oil API:

38 deg API

Mud Weight: 9.00 lb/gal

Cushion Length:

ft

Water Salinity:

ppm

Viscosity: 54.00 sec/qt

Cushion Volume:

bbbl

Water Loss: 5.77 in³

Gas Cushion Type:

Resistivity: ohm.m

Gas Cushion Pressure:

psig

Salinity: 900.00 ppm

Filter Cake: 1.00 inches

Recovery Information

Recovery Table

Length ft	Description	Volume bbl
63.00	GOM 46%g, 33%m, 21%o	0.884
127.00	GMCO 49%o, 38%g, 13%m	1.781
190.00	CGO 52%o, 46%g, 2%m	2.665
10.00	CO 98%o, 2%g	0.140
0.00	GIP = 1575'	0.000

Total Length: 390.00 ft Total Volume: 5.470 bbl

Num Fluid Samples: 0

Num Gas Bombs: 0

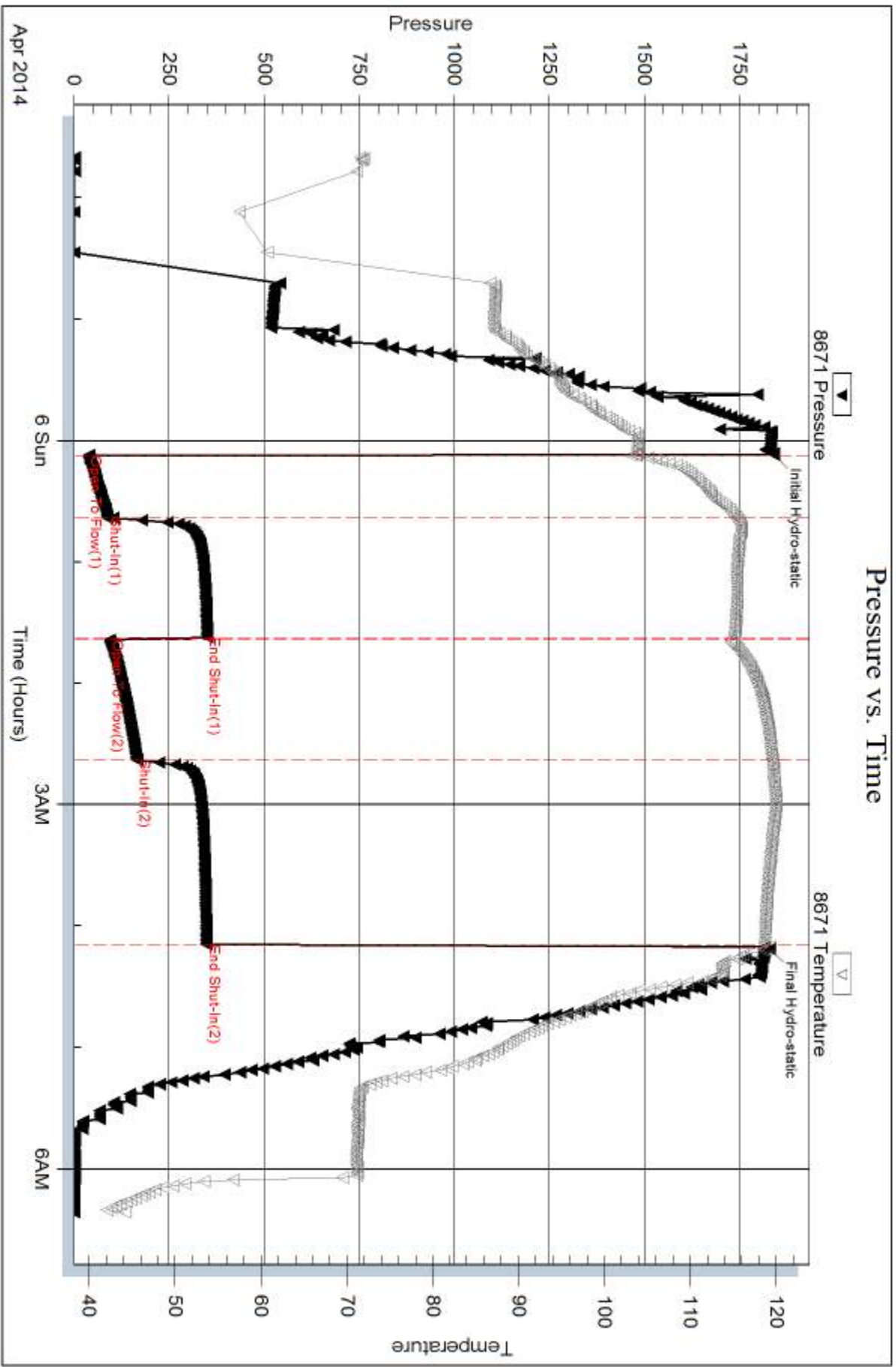
Serial #:

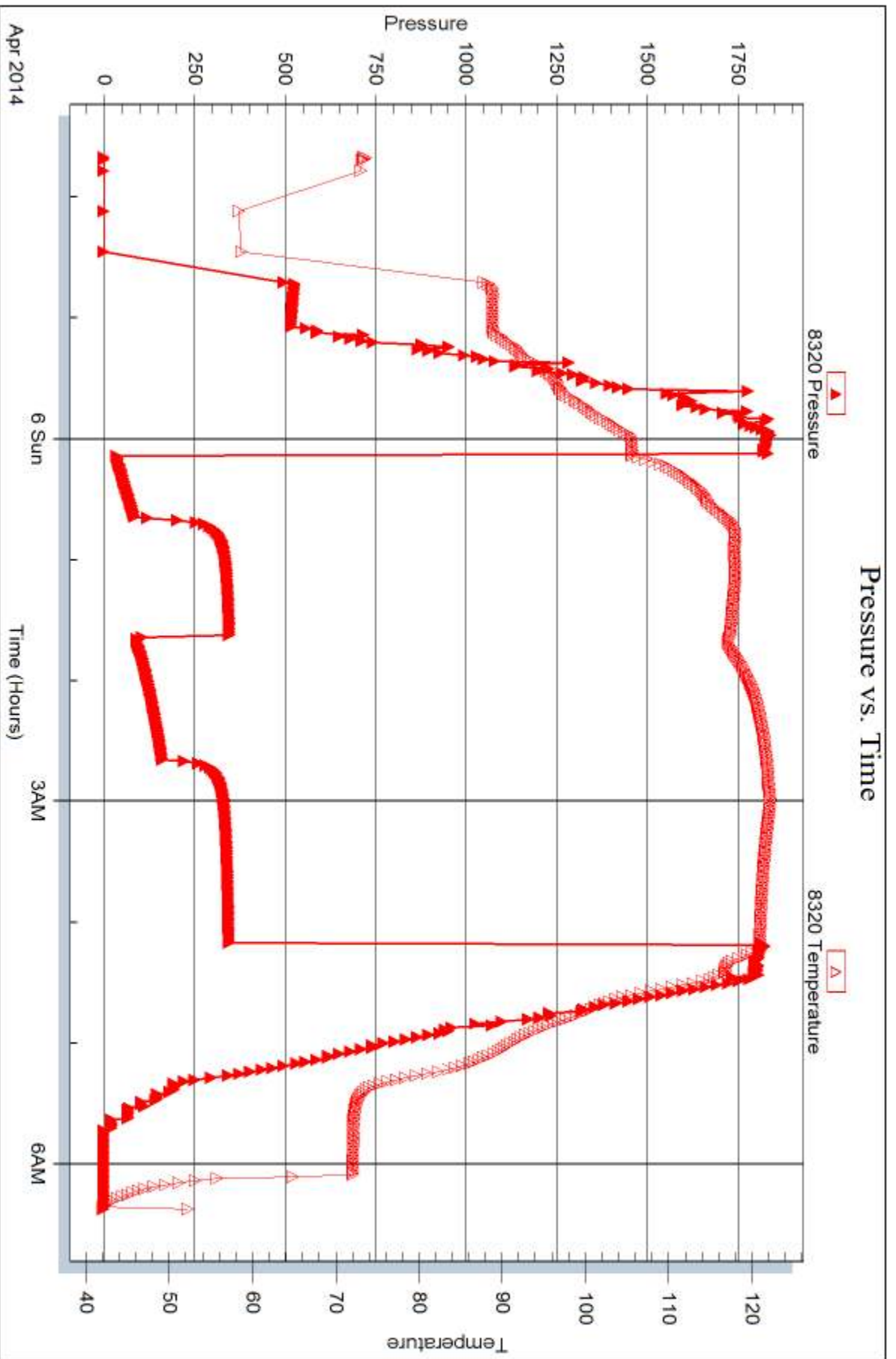
Laboratory Name:

Laboratory Location:

Recovery Comments: Gravity = 36.2 api @ 42 deg F

Corrcted Gravity = 38 api







DRILL STEM TEST REPORT

Prepared For: **Cobalt Energy, LLC**

PO Box 8037
Wichita, KS 67208

ATTN: Corey Baker

KT Unit 'A' #1-18

18-10s-24w Graham,KS

Start Date: 2014.04.06 @ 13:46:00

End Date: 2014.04.06 @ 21:48:15

Job Ticket #: 56986 DST #: 2

Trilobite Testing, Inc
PO Box 362 Hays, KS 67601
ph: 785-625-4778 fax: 785-625-5620

Printed: 2014.04.10 @ 11:38:47



**TRILOBITE
TESTING, INC**

DRILL STEM TEST REPORT

Cobalt Energy, LLC

18-10s-24w Graham,KS

PO Box 8037
Wichita, KS 67208

KT Unit 'A' #1-18

Job Ticket: 56986

DST#: 2

ATTN: Corey Baker

Test Start: 2014.04.06 @ 13:46:00

GENERAL INFORMATION:

Formation: **LKC "D"**

Deviated: No Whipstock: ft (KB)

Time Tool Opened: 15:45:30

Time Test Ended: 21:48:15

Test Type: Conventional Bottom Hole (Reset)

Tester: James Winder

Unit No: 57

Interval: 3816.00 ft (KB) To 3845.00 ft (KB) (TVD)

Reference Elevations: 2478.00 ft (KB)

Total Depth: 3845.00 ft (KB) (TVD)

2469.00 ft (CF)

Hole Diameter: 7.88 inches Hole Condition: Fair

KB to GR/CF: 9.00 ft

Serial #: 8671

Inside

Press@RunDepth: 100.28 psig @ 3817.00 ft (KB)

Capacity: 8000.00 psig

Start Date: 2014.04.06

End Date:

2014.04.06

Last Calib.:

2014.04.06

Start Time: 13:46:05

End Time:

21:48:14

Time On Btm:

2014.04.06 @ 15:44:00

Time Off Btm:

2014.04.06 @ 19:49:15

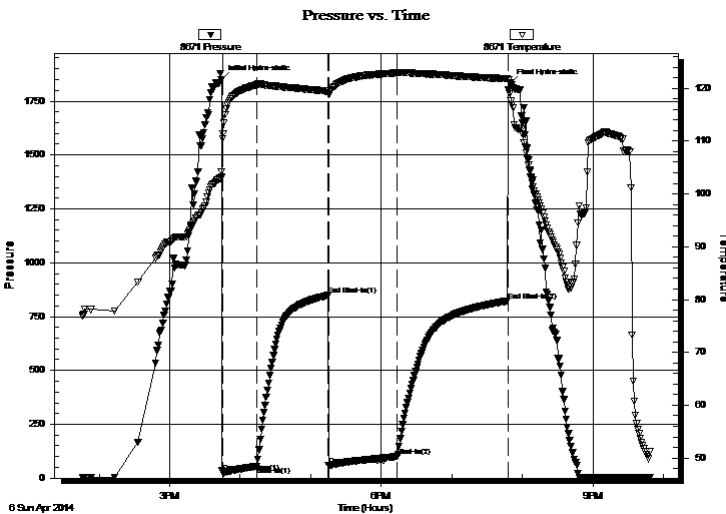
TEST COMMENT: 30 - IF: Blow built to BOB (11") in 8 3/4 min.

60 - IS: Blow back built to 3"

60 - FF: Blow built to BOB in 8 min.

90 - FS: Blow back built to 5"

PRESSURE SUMMARY



Time (Min.)	Pressure (psig)	Temp (deg F)	Annotation
0	1849.93	104.16	Initial Hydro-static
2	24.73	111.35	Open To Flow (1)
31	54.96	120.67	Shut-In(1)
91	848.01	119.43	End Shut-In(1)
92	58.09	118.96	Open To Flow (2)
150	100.28	122.93	Shut-In(2)
244	822.14	121.79	End Shut-In(2)
246	1833.47	119.01	Final Hydro-static

Recovery

Length (ft)	Description	Volume (bbl)
45.00	SO/MCW 80%w, 15%m, 5%o	0.63
80.00	MWCGO 39%omix, 28%o, 18%g, 10%w, 1.12n	
53.00	SWCGO 80%omix, 15%g, 5%w	0.74
10.00	SWMCO 87%o, 7%m, 3%g, 3%w	0.14
15.00	CO 95%o, 4%g, 1%m	0.21
0.00	GIP = 820'	0.00

* Recovery from multiple tests

Gas Rates

	Choke (inches)	Pressure (psig)	Gas Rate (Mcf/d)



**TRILOBITE
TESTING, INC**

DRILL STEM TEST REPORT

TOOL DIAGRAM

Cobalt Energy, LLC

18-10s-24w Graham,KS

PO Box 8037
Wichita, KS 67208

KT Unit 'A' #1-18

Job Ticket: 56986

DST#: 2

ATTN: Corey Baker

Test Start: 2014.04.06 @ 13:46:00

Tool Information

Drill Pipe:	Length: 3793.00 ft	Diameter: 3.80 inches	Volume: 53.21 bbl	Tool Weight: 2500.00 lb
Heavy Wt. Pipe:	Length: 0.00 ft	Diameter: 0.00 inches	Volume: 0.00 bbl	Weight set on Packer: 25000.00 lb
Drill Collar:	Length: 0.00 ft	Diameter: 0.00 inches	Volume: 0.00 bbl	Weight to Pull Loose: 52000.00 lb
			<u>Total Volume: 53.21 bbl</u>	Tool Chased 0.00 ft
Drill Pipe Above KB:	5.00 ft			String Weight: Initial 45000.00 lb
Depth to Top Packer:	3816.00 ft			Final 46000.00 lb
Depth to Bottom Packer:	ft			
Interval between Packers:	29.00 ft			
Tool Length:	57.00 ft			
Number of Packers:	2	Diameter: 6.75 inches		

Tool Comments:

Tool Description

Tool Description	Length (ft)	Serial No.	Position	Depth (ft)	Accum. Lengths
Shut In Tool	5.00			3793.00	
Hydraulic tool	5.00			3798.00	
Jars	5.00			3803.00	
Safety Joint	3.00			3806.00	
Packer	5.00			3811.00	28.00 Bottom Of Top Packer
Packer	5.00			3816.00	
Packer - Shale	0.00			3816.00	
Stubb	1.00			3817.00	
Recorder	0.00	8671	Inside	3817.00	
Recorder	0.00	8320	Outside	3817.00	
Perforations	25.00			3842.00	
Bullnose	3.00			3845.00	29.00 Bottom Packers & Anchor

Total Tool Length: 57.00



**TRILOBITE
TESTING, INC**

DRILL STEM TEST REPORT

FLUID SUMMARY

Cobalt Energy, LLC

18-10s-24w Graham,KS

PO Box 8037
Wichita, KS 67208

KT Unit 'A' #1-18

Job Ticket: 56986

DST#: 2

ATTN: Corey Baker

Test Start: 2014.04.06 @ 13:46:00

Mud and Cushion Information

Mud Type: Gel Chem
Mud Weight: 9.00 lb/gal
Viscosity: 51.00 sec/qt
Water Loss: 5.77 in³
Resistivity: ohm.m
Salinity: 1000.00 ppm
Filter Cake: 1.00 inches

Cushion Type:
Cushion Length: ft
Cushion Volume: bbl
Gas Cushion Type:
Gas Cushion Pressure: psig

Oil API: 35.2 deg API
Water Salinity: 72000 ppm

Recovery Information

Recovery Table

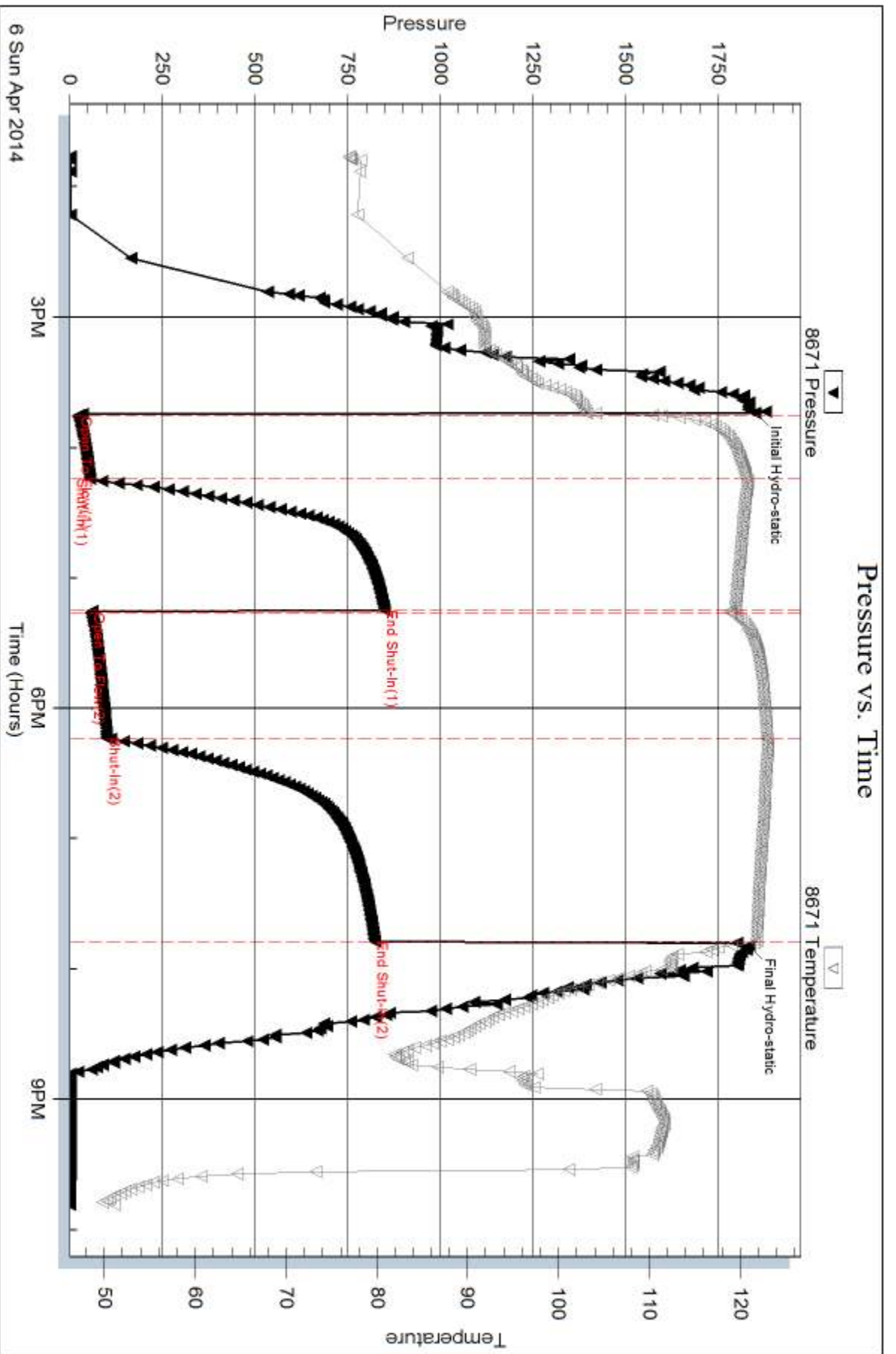
Length ft	Description	Volume bbl
45.00	SO/MCW 80%w , 15%m, 5%o	0.631
80.00	MWCGO 39%omix, 28%o, 18%g, 10%w , 5%i	1.122
53.00	SWCGO 80%omix, 15%g, 5%w	0.743
10.00	SWMCO 87%o, 7%m, 3%g, 3%w	0.140
15.00	CO 95%o, 4%g, 1%m	0.210
0.00	GIP = 820'	0.000

Total Length: 203.00 ft Total Volume: 2.846 bbl

Num Fluid Samples: 0 Num Gas Bombs: 0 Serial #:

Laboratory Name: Laboratory Location:

Recovery Comments: Gravity = 34.2 api @ 50 deg F Corrected Gravity = 35.2 api
RW = .147 ohms @ 51 deg F Chlorides = 72,000 ppm

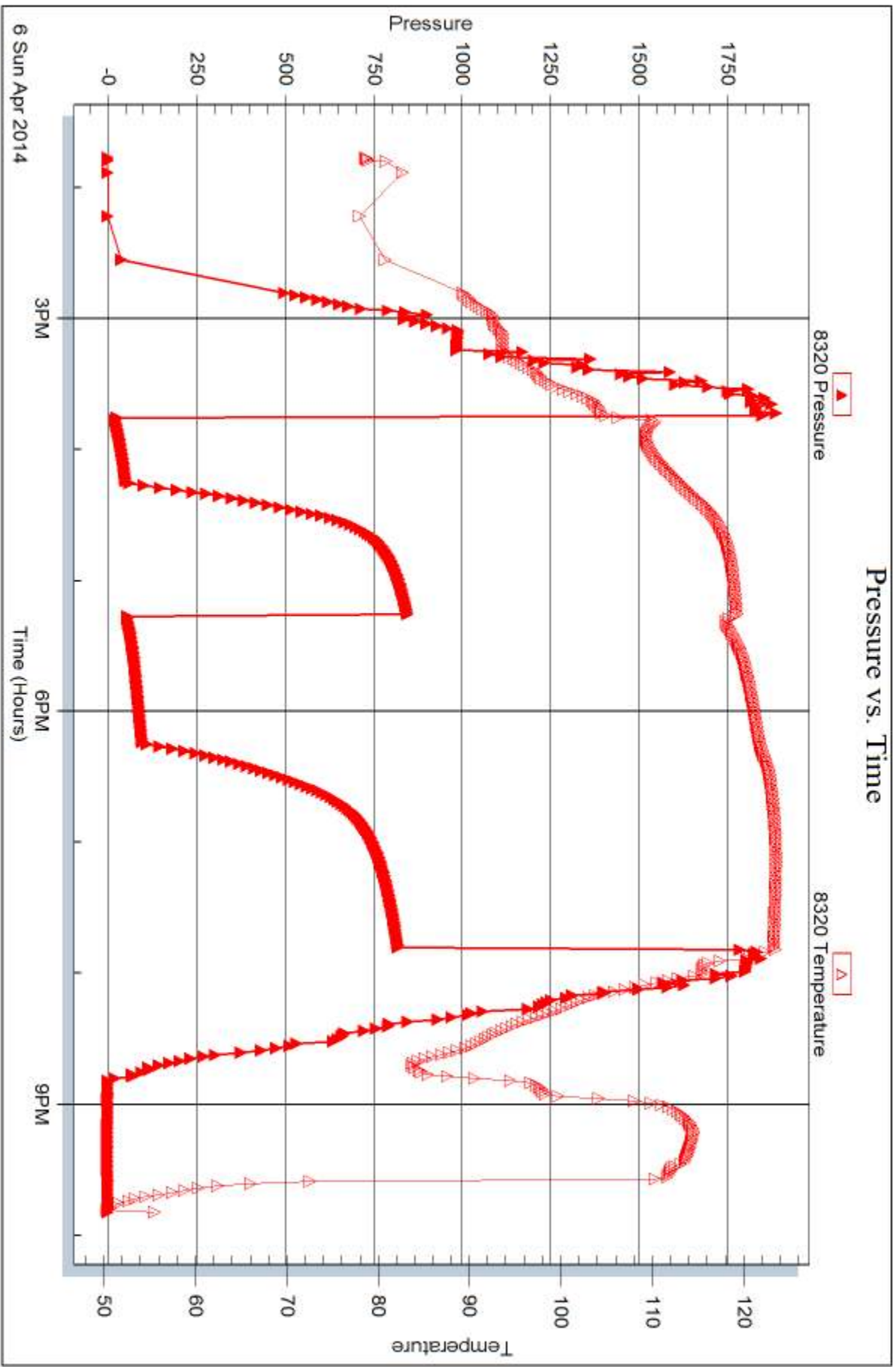


Serial #: 8320

Outside Cobalt Energy, LLC

KT Unit 'A' #1-18

DST Test Number: 2



Trilobite Testing, Inc

Ref. No: 56986

Printed: 2014.04.10 @ 11:38:49



DRILL STEM TEST REPORT

Prepared For: **Cobalt Energy, LLC**

PO Box 8037
Wichita, KS 67208

ATTN: Corey Baker

KT Unit 'A' #1-18

18-10s-24w Graham,KS

Start Date: 2014.04.07 @ 07:50:00

End Date: 2014.04.07 @ 15:59:30

Job Ticket #: 56987 DST #: 3

Trilobite Testing, Inc
PO Box 362 Hays, KS 67601
ph: 785-625-4778 fax: 785-625-5620

Printed: 2014.04.10 @ 11:38:24



**TRILOBITE
TESTING, INC**

DRILL STEM TEST REPORT

Cobalt Energy, LLC

18-10s-24w Graham,KS

PO Box 8037
Wichita, KS 67208

KT Unit 'A' #1-18

Job Ticket: 56987

DST#: 3

ATTN: Corey Baker

Test Start: 2014.04.07 @ 07:50:00

GENERAL INFORMATION:

Formation: **LKC "F"**

Deviated: No Whipstock: ft (KB)

Time Tool Opened: 09:40:15

Time Test Ended: 15:59:30

Test Type: Conventional Bottom Hole (Reset)

Tester: James Winder

Unit No: 57

Interval: 3838.00 ft (KB) To 3865.00 ft (KB) (TVD)

Reference Elevations: 2478.00 ft (KB)

Total Depth: 3865.00 ft (KB) (TVD)

2469.00 ft (CF)

Hole Diameter: 7.88 inches Hole Condition: Fair

KB to GR/CF: 9.00 ft

Serial #: 8671

Inside

Press@RunDepth: 295.08 psig @ 3839.00 ft (KB)

Capacity: 8000.00 psig

Start Date: 2014.04.07

End Date:

2014.04.07

Last Calib.:

2014.04.07

Start Time:

07:50:05

End Time:

15:59:29

Time On Btm:

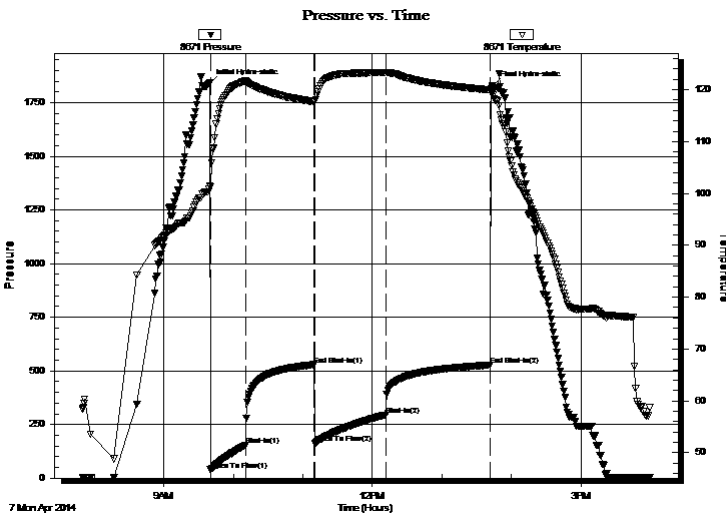
2014.04.07 @ 09:39:45

Time Off Btm:

2014.04.07 @ 13:44:00

TEST COMMENT: 30 - IF: Blow built to BOB (11") in 6 3/4 min.
60 - IS: Blow back built to 1/2"
60 - FF: Blow built to BOB in 12 1/2 min.
90 - FS: Blow back built to 1"

PRESSURE SUMMARY



Time (Min.)	Pressure (psig)	Temp (deg F)	Annotation
0	1840.18	101.37	Initial Hydro-static
1	38.27	101.29	Open To Flow (1)
31	154.06	121.63	Shut-In(1)
90	528.42	117.71	End Shut-In(1)
91	160.39	117.65	Open To Flow (2)
152	295.08	123.31	Shut-In(2)
242	526.73	119.94	End Shut-In(2)
245	1829.30	119.42	Final Hydro-static

Recovery

Length (ft)	Description	Volume (bbl)
30.00	GMW 45%w, 45%m, 10%g	0.42
487.00	MCW w/trace oil 90%w, 8%m, 2%g	6.83
63.00	MCW w/Oil spots 65%w, 30%m, 4%g, 1%o	0.88
15.00	Oil 98%o, 2%m	0.21
0.00	GIP = 50'	0.00

* Recovery from multiple tests

Gas Rates

Choke (inches)	Pressure (psig)	Gas Rate (Mcf/d)



**TRILOBITE
TESTING, INC**

DRILL STEM TEST REPORT

TOOL DIAGRAM

Cobalt Energy, LLC

18-10s-24w Graham,KS

PO Box 8037
Wichita, KS 67208

KT Unit 'A' #1-18

Job Ticket: 56987

DST#: 3

ATTN: Corey Baker

Test Start: 2014.04.07 @ 07:50:00

Tool Information

Drill Pipe:	Length: 3825.00 ft	Diameter: 3.80 inches	Volume: 53.65 bbl	Tool Weight: 2500.00 lb
Heavy Wt. Pipe:	Length: 0.00 ft	Diameter: 0.00 inches	Volume: 0.00 bbl	Weight set on Packer: 25000.00 lb
Drill Collar:	Length: 0.00 ft	Diameter: 0.00 inches	Volume: 0.00 bbl	Weight to Pull Loose: 64000.00 lb
			<u>Total Volume: 53.65 bbl</u>	Tool Chased 0.00 ft
Drill Pipe Above KB:	15.00 ft			String Weight: Initial 46000.00 lb
Depth to Top Packer:	3838.00 ft			Final 48000.00 lb
Depth to Bottom Packer:	ft			
Interval between Packers:	27.00 ft			
Tool Length:	55.00 ft			
Number of Packers:	2	Diameter: 6.75 inches		

Tool Comments:

Tool Description	Length (ft)	Serial No.	Position	Depth (ft)	Accum. Lengths
------------------	-------------	------------	----------	------------	----------------

Shut In Tool	5.00			3815.00	
Hydraulic tool	5.00			3820.00	
Jars	5.00			3825.00	
Safety Joint	3.00			3828.00	
Packer	5.00			3833.00	28.00 Bottom Of Top Packer
Packer	5.00			3838.00	
Stubb	1.00			3839.00	
Recorder	0.00	8671	Inside	3839.00	
Recorder	0.00	8320	Outside	3839.00	
Perforations	23.00			3862.00	
Bullnose	3.00			3865.00	27.00 Bottom Packers & Anchor

Total Tool Length: 55.00



**TRILOBITE
TESTING, INC**

DRILL STEM TEST REPORT

FLUID SUMMARY

Cobalt Energy, LLC

18-10s-24w Graham,KS

PO Box 8037
Wichita, KS 67208

KT Unit 'A' #1-18

Job Ticket: 56987

DST#: 3

ATTN: Corey Baker

Test Start: 2014.04.07 @ 07:50:00

Mud and Cushion Information

Mud Type: Gel Chem
Mud Weight: 9.00 lb/gal
Viscosity: 52.00 sec/qt
Water Loss: 5.97 in³
Resistivity: ohm.m
Salinity: 1100.00 ppm
Filter Cake: 1.00 inches

Cushion Type:
Cushion Length: ft
Cushion Volume: bbl
Gas Cushion Type:
Gas Cushion Pressure: psig

Oil API: 37 deg API
Water Salinity: 12000 ppm

Recovery Information

Recovery Table

Length ft	Description	Volume bbl
30.00	GMW 45%w , 45%m, 10%g	0.421
487.00	MCW w /trace oil 90%w , 8%m, 2%g	6.831
63.00	MCW w /Oil spots 65%w , 30%m, 4%g, 1%o	0.884
15.00	Oil 98%o, 2%m	0.210
0.00	GIP = 50'	0.000

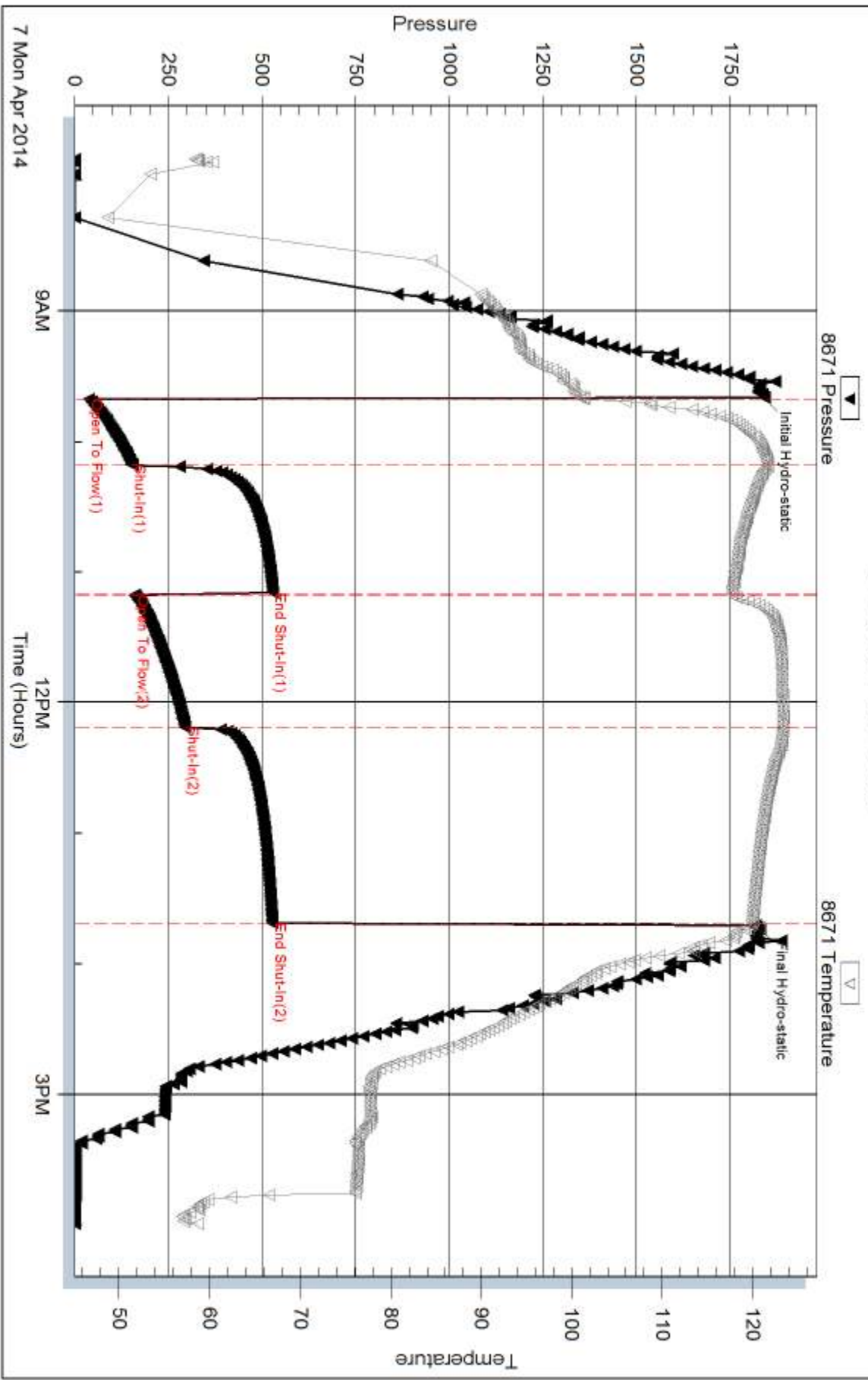
Total Length: 595.00 ft Total Volume: 8.346 bbl

Num Fluid Samples: 0 Num Gas Bombs: 0 Serial #:

Laboratory Name: Laboratory Location:

Recovery Comments: Gravity = 37 api @ 60 deg F
RW = .617 ohms @ 62.1 deg F Chlorides = 12,000 ppm

Pressure vs. Time

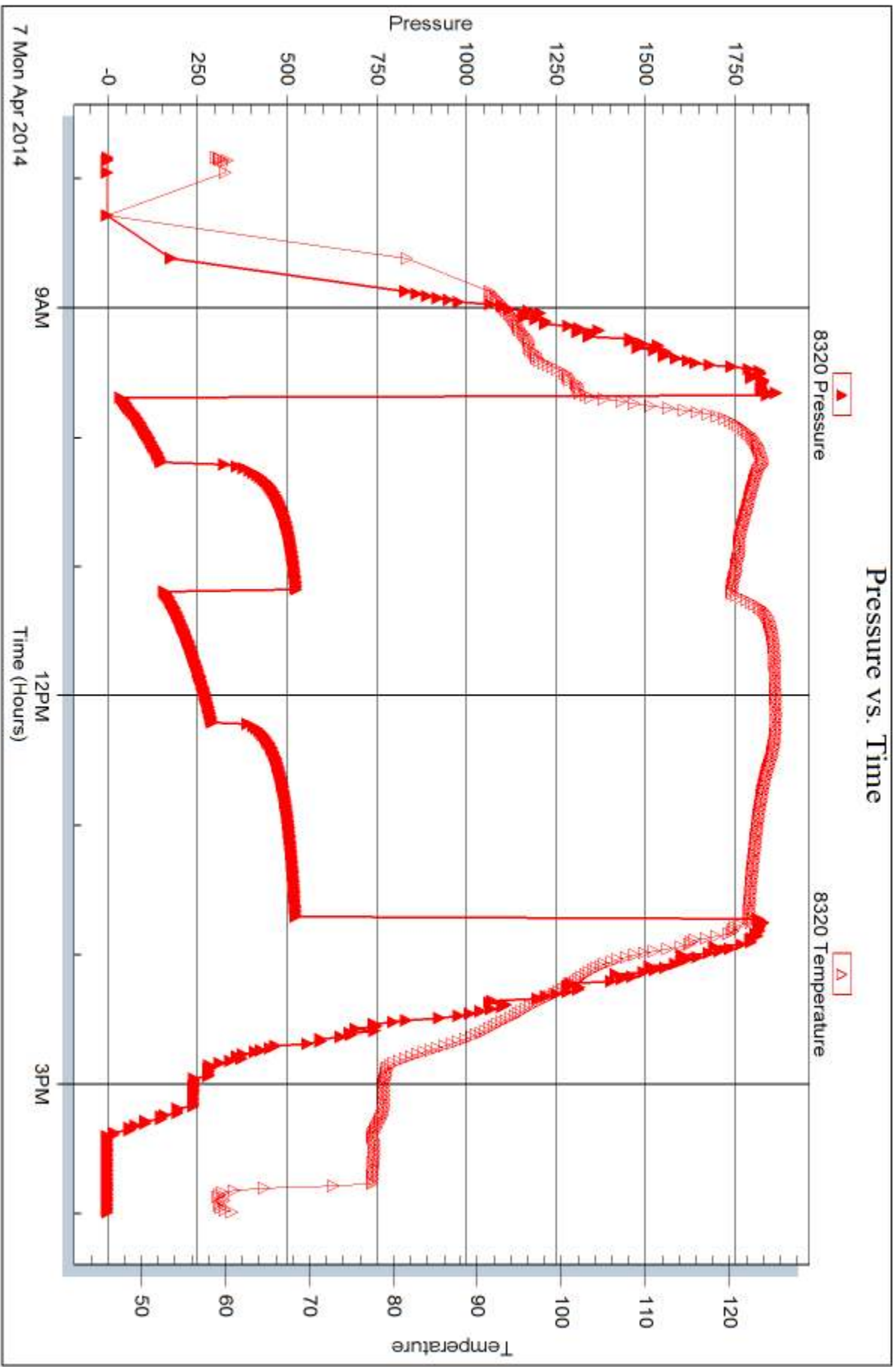


Serial #: 8320

Outside Cobalt Energy, LLC

KT Unit 'A' #1-18

DST Test Number: 3



Tribble Testing, Inc

Ref. No: 56987

Printed: 2014.04.10 @ 11:38:27



DRILL STEM TEST REPORT

Prepared For: **Cobalt Energy, LLC**

PO Box 8037
Wichita, KS 67208

ATTN: Corey Baker

KT Unit 'A' #1-18

18-10s-24w Graham,KS

Start Date: 2014.04.08 @ 01:25:00

End Date: 2014.04.08 @ 09:18:00

Job Ticket #: 56988 DST #: 4

Trilobite Testing, Inc
PO Box 362 Hays, KS 67601
ph: 785-625-4778 fax: 785-625-5620

Printed: 2014.04.10 @ 11:37:40



**TRILOBITE
TESTING, INC**

DRILL STEM TEST REPORT

Cobalt Energy, LLC

18-10s-24w Graham,KS

PO Box 8037
Wichita, KS 67208

KT Unit 'A' #1-18

Job Ticket: 56988

DST#: 4

ATTN: Corey Baker

Test Start: 2014.04.08 @ 01:25:00

GENERAL INFORMATION:

Formation: **LKC "H"**

Deviated: No Whipstock: ft (KB)

Time Tool Opened: 03:16:45

Time Test Ended: 09:18:00

Test Type: Conventional Bottom Hole (Reset)

Tester: James Winder

Unit No: 57

Interval: 3890.00 ft (KB) To 3920.00 ft (KB) (TVD)

Reference Elevations: 2478.00 ft (KB)

Total Depth: 3920.00 ft (KB) (TVD)

2469.00 ft (CF)

Hole Diameter: 7.88 inches Hole Condition: Fair

KB to GR/CF: 9.00 ft

Serial #: 8671

Inside

Press@RunDepth: 22.62 psig @ 3891.00 ft (KB)

Capacity: 8000.00 psig

Start Date: 2014.04.08

End Date:

2014.04.08

Last Calib.:

2014.04.08

Start Time: 01:25:05

End Time:

09:17:59

Time On Btm:

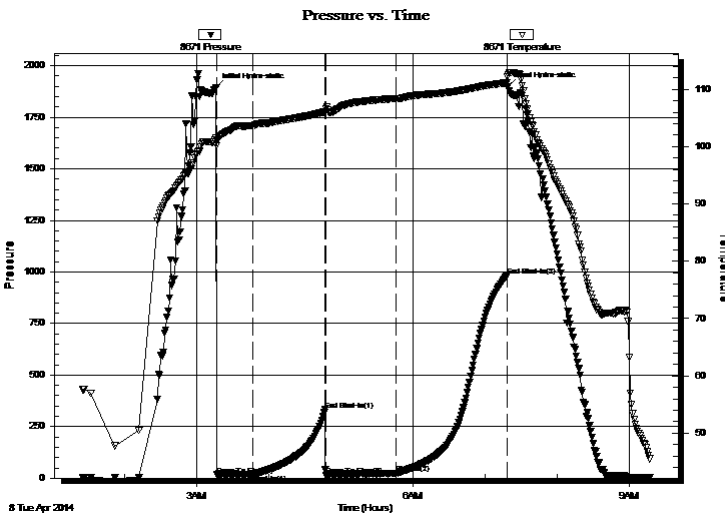
2014.04.08 @ 03:16:15

Time Off Btm:

2014.04.08 @ 07:19:00

TEST COMMENT: 30 - IF: Blow built to 3"
60 - IS: No blow back
60 - FF: 4" Surge at open, bled off, blow built to 4 3/4"
90 - FS: No blow back

PRESSURE SUMMARY



Time (Min.)	Pressure (psig)	Temp (deg F)	Annotation
0	1894.73	101.45	Initial Hydro-static
1	16.11	100.19	Open To Flow (1)
31	18.76	103.71	Shut-In(1)
91	331.62	106.09	End Shut-In(1)
92	15.14	106.66	Open To Flow (2)
150	22.62	108.34	Shut-In(2)
242	979.80	111.13	End Shut-In(2)
243	1900.30	112.18	Final Hydro-static

Recovery

Length (ft)	Description	Volume (bbl)
20.00	MO 50%o, 45%m, 5%g	0.28
0.00	GIP = 45'+	0.00

* Recovery from multiple tests

Gas Rates

Choke (inches)	Pressure (psig)	Gas Rate (Mcf/d)



**TRILOBITE
TESTING, INC**

DRILL STEM TEST REPORT

TOOL DIAGRAM

Cobalt Energy, LLC

18-10s-24w Graham,KS

PO Box 8037
Wichita, KS 67208

KT Unit 'A' #1-18

Job Ticket: 56988

DST#: 4

ATTN: Corey Baker

Test Start: 2014.04.08 @ 01:25:00

Tool Information

Drill Pipe:	Length: 3888.00 ft	Diameter: 3.80 inches	Volume: 54.54 bbl	Tool Weight: 2500.00 lb
Heavy Wt. Pipe:	Length: 0.00 ft	Diameter: 0.00 inches	Volume: 0.00 bbl	Weight set on Packer: 25000.00 lb
Drill Collar:	Length: 0.00 ft	Diameter: 0.00 inches	Volume: 0.00 bbl	Weight to Pull Loose: 46000.00 lb
			<u>Total Volume: 54.54 bbl</u>	Tool Chased 0.00 ft
Drill Pipe Above KB:	26.00 ft			String Weight: Initial 45000.00 lb
Depth to Top Packer:	3890.00 ft			Final 45000.00 lb
Depth to Bottom Packer:	ft			
Interval between Packers:	30.00 ft			
Tool Length:	58.00 ft			
Number of Packers:	2	Diameter: 6.75 inches		

Tool Comments:

Tool Description

Tool Description	Length (ft)	Serial No.	Position	Depth (ft)	Accum. Lengths
Shut In Tool	5.00			3867.00	
Hydraulic tool	5.00			3872.00	
Jars	5.00			3877.00	
Safety Joint	3.00			3880.00	
Packer	5.00			3885.00	28.00 Bottom Of Top Packer
Packer	5.00			3890.00	
Stubb	1.00			3891.00	
Recorder	0.00	8671	Inside	3891.00	
Recorder	0.00	8320	Outside	3891.00	
Perforations	26.00			3917.00	
Bullnose	3.00			3920.00	30.00 Bottom Packers & Anchor

Total Tool Length: 58.00



**TRILOBITE
TESTING, INC**

DRILL STEM TEST REPORT

FLUID SUMMARY

Cobalt Energy, LLC

18-10s-24w Graham,KS

PO Box 8037
Wichita, KS 67208

KT Unit 'A' #1-18

Job Ticket: 56988

DST#: 4

ATTN: Corey Baker

Test Start: 2014.04.08 @ 01:25:00

Mud and Cushion Information

Mud Type: Gel Chem

Cushion Type:

Oil API:

deg API

Mud Weight: 9.00 lb/gal

Cushion Length:

ft

Water Salinity:

ppm

Viscosity: 60.00 sec/qt

Cushion Volume:

bbbl

Water Loss: 5.99 in³

Gas Cushion Type:

Resistivity: ohm.m

Gas Cushion Pressure:

psig

Salinity: 1100.00 ppm

Filter Cake: 1.00 inches

Recovery Information

Recovery Table

Length ft	Description	Volume bbl
20.00	MO 50%o, 45%m, 5%g	0.281
0.00	GIP = 45'+	0.000

Total Length: 20.00 ft Total Volume: 0.281 bbl

Num Fluid Samples: 0

Num Gas Bombs: 0

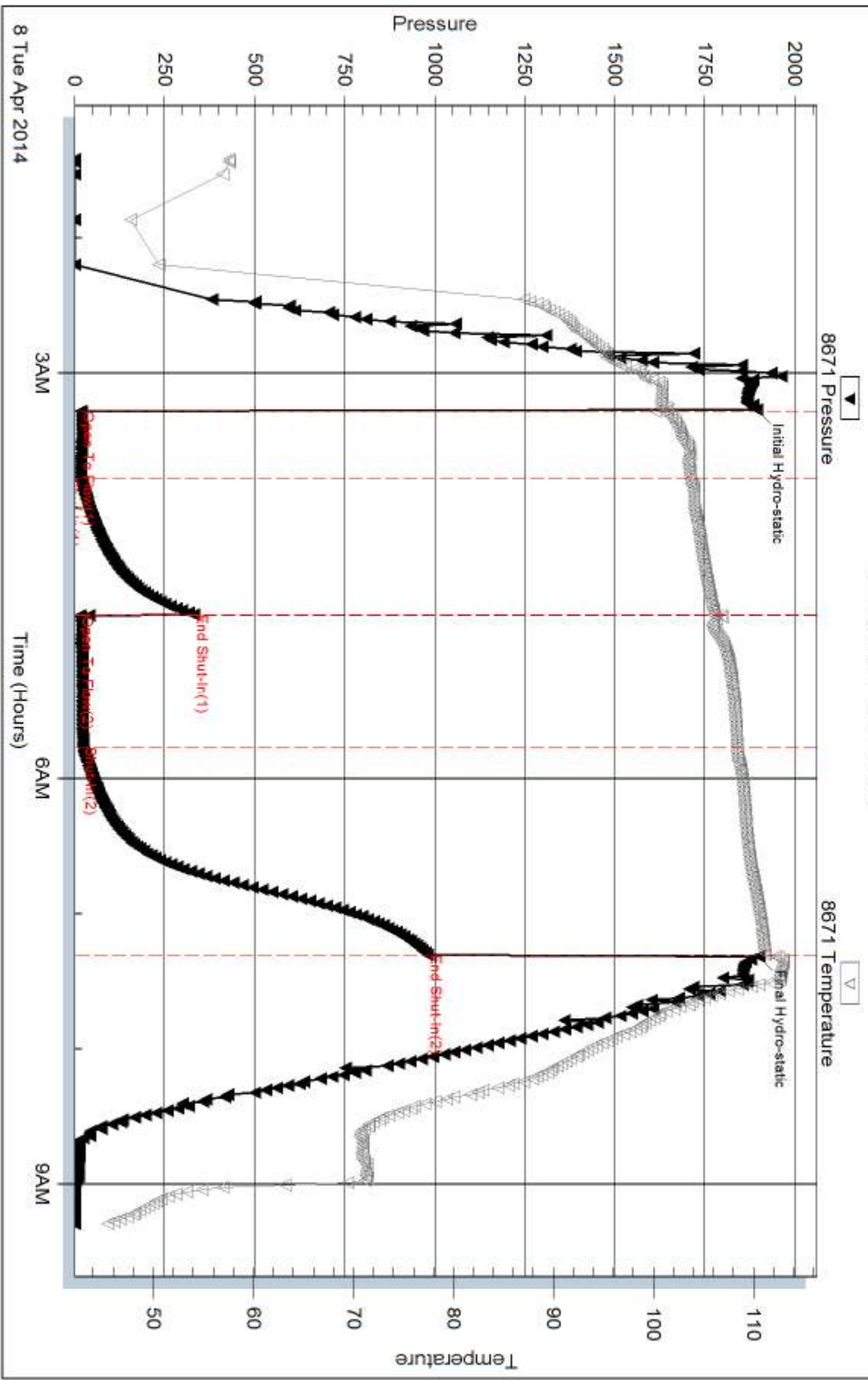
Serial #:

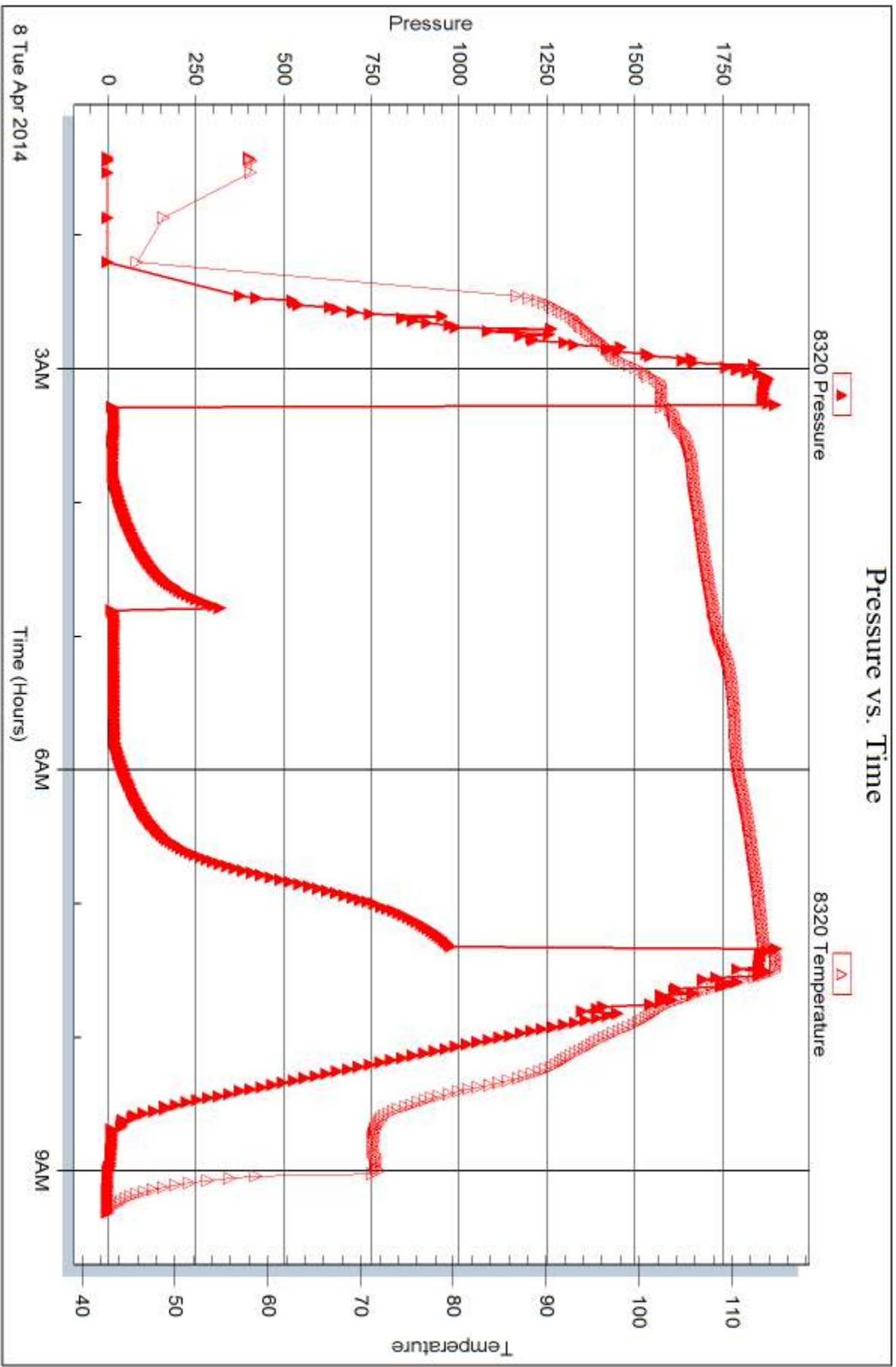
Laboratory Name:

Laboratory Location:

Recovery Comments:

Pressure vs. Time







DRILL STEM TEST REPORT

Prepared For: **Cobalt Energy, LLC**

PO Box 8037
Wichita, KS 67208

ATTN: Corey Baker

KT Unit 'A' #1-18

18-10s-24w Graham,KS

Start Date: 2014.04.08 @ 18:34:00

End Date: 2014.04.08 @ 23:17:00

Job Ticket #: 56989 DST #: 5

Trilobite Testing, Inc

PO Box 362 Hays, KS 67601

ph: 785-625-4778 fax: 785-625-5620

Printed: 2014.04.10 @ 11:37:12



**TRILOBITE
TESTING, INC**

DRILL STEM TEST REPORT

Cobalt Energy, LLC

18-10s-24w Graham,KS

PO Box 8037
Wichita, KS 67208

KT Unit 'A' #1-18

ATTN: Corey Baker

Job Ticket: 56989

DST#: 5

Test Start: 2014.04.08 @ 18:34:00

GENERAL INFORMATION:

Formation: **LKC "I - J"**

Deviated: No Whipstock: ft (KB)

Time Tool Opened: 20:19:45

Time Test Ended: 23:17:00

Test Type: Conventional Bottom Hole (Reset)

Tester: James Winder

Unit No: 57

Interval: 3924.00 ft (KB) To 3958.00 ft (KB) (TVD)

Reference Elevations: 2478.00 ft (KB)

Total Depth: 3958.00 ft (KB) (TVD)

2469.00 ft (CF)

Hole Diameter: 7.88 inches Hole Condition: Fair

KB to GR/CF: 9.00 ft

Serial #: 8671

Inside

Press@RunDepth: 19.92 psig @ 3925.00 ft (KB)

Capacity: 8000.00 psig

Start Date: 2014.04.08

End Date: 2014.04.08

Last Calib.: 2014.04.08

Start Time: 18:34:05

End Time: 23:16:59

Time On Btm: 2014.04.08 @ 20:19:30

Time Off Btm: 2014.04.08 @ 21:52:15

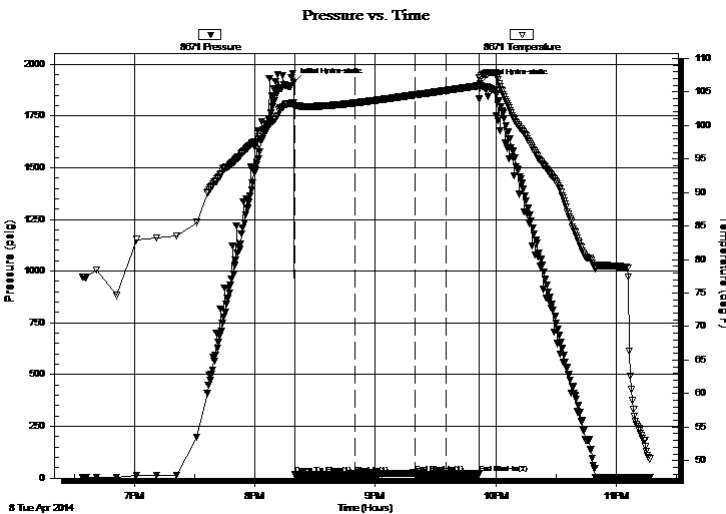
TEST COMMENT: 30 - IF: Blow built to 1/4"+, slowly died back, dead at 30 min.

30 - IS: No blow back

15 - FF: No blow

15 - FS: No blow back

PRESSURE SUMMARY



Time (Min.)	Pressure (psig)	Temp (deg F)	Annotation
0	1911.71	103.42	Initial Hydro-static
1	18.74	102.71	Open To Flow (1)
31	19.82	103.36	Shut-In(1)
61	24.71	104.58	End Shut-In(1)
61	19.45	104.58	Open To Flow (2)
76	19.92	105.23	Shut-In(2)
92	21.52	105.92	End Shut-In(2)
93	1904.74	107.07	Final Hydro-static

Recovery

Length (ft)	Description	Volume (bbl)
1.00	Mud w /Oil spots 98%m, 2%o	0.01

* Recovery from multiple tests

Gas Rates

Choke (inches)	Pressure (psig)	Gas Rate (Mcf/d)



**TRILOBITE
TESTING, INC**

DRILL STEM TEST REPORT

TOOL DIAGRAM

Cobalt Energy, LLC

18-10s-24w Graham,KS

PO Box 8037
Wichita, KS 67208

KT Unit 'A' #1-18

Job Ticket: 56989

DST#: 5

ATTN: Corey Baker

Test Start: 2014.04.08 @ 18:34:00

Tool Information

Drill Pipe:	Length: 3920.00 ft	Diameter: 3.80 inches	Volume: 54.99 bbl	Tool Weight:	2500.00 lb
Heavy Wt. Pipe:	Length: 0.00 ft	Diameter: 0.00 inches	Volume: 0.00 bbl	Weight set on Packer:	25000.00 lb
Drill Collar:	Length: 0.00 ft	Diameter: 0.00 inches	Volume: 0.00 bbl	Weight to Pull Loose:	48000.00 lb
			<u>Total Volume: 54.99 bbl</u>	Tool Chased	0.00 ft
Drill Pipe Above KB:	24.00 ft			String Weight: Initial	45000.00 lb
Depth to Top Packer:	3924.00 ft			Final	45000.00 lb
Depth to Bottom Packer:	ft				
Interval between Packers:	34.00 ft				
Tool Length:	62.00 ft				
Number of Packers:	2	Diameter: 6.75 inches			

Tool Comments:

Tool Description

Tool Description	Length (ft)	Serial No.	Position	Depth (ft)	Accum. Lengths
Shut In Tool	5.00			3901.00	
Hydraulic tool	5.00			3906.00	
Jars	5.00			3911.00	
Safety Joint	3.00			3914.00	
Packer	5.00			3919.00	28.00 Bottom Of Top Packer
Packer	5.00			3924.00	
Stubb	1.00			3925.00	
Recorder	0.00	8671	Inside	3925.00	
Recorder	0.00	8320	Outside	3925.00	
Perforations	30.00			3955.00	
Bullnose	3.00			3958.00	34.00 Bottom Packers & Anchor

Total Tool Length: 62.00



**TRILOBITE
TESTING, INC**

DRILL STEM TEST REPORT

FLUID SUMMARY

Cobalt Energy, LLC

18-10s-24w Graham,KS

PO Box 8037
Wichita, KS 67208

KT Unit 'A' #1-18

Job Ticket: 56989

DST#: 5

ATTN: Corey Baker

Test Start: 2014.04.08 @ 18:34:00

Mud and Cushion Information

Mud Type: Gel Chem

Cushion Type:

Oil API:

deg API

Mud Weight: 9.00 lb/gal

Cushion Length:

ft

Water Salinity:

ppm

Viscosity: 60.00 sec/qt

Cushion Volume:

bbbl

Water Loss: 5.39 in³

Gas Cushion Type:

Resistivity: ohm.m

Gas Cushion Pressure:

psig

Salinity: 1700.00 ppm

Filter Cake: 1.00 inches

Recovery Information

Recovery Table

Length ft	Description	Volume bbl
1.00	Mud w /Oil spots 98%m, 2%o	0.014

Total Length: 1.00 ft Total Volume: 0.014 bbl

Num Fluid Samples: 0

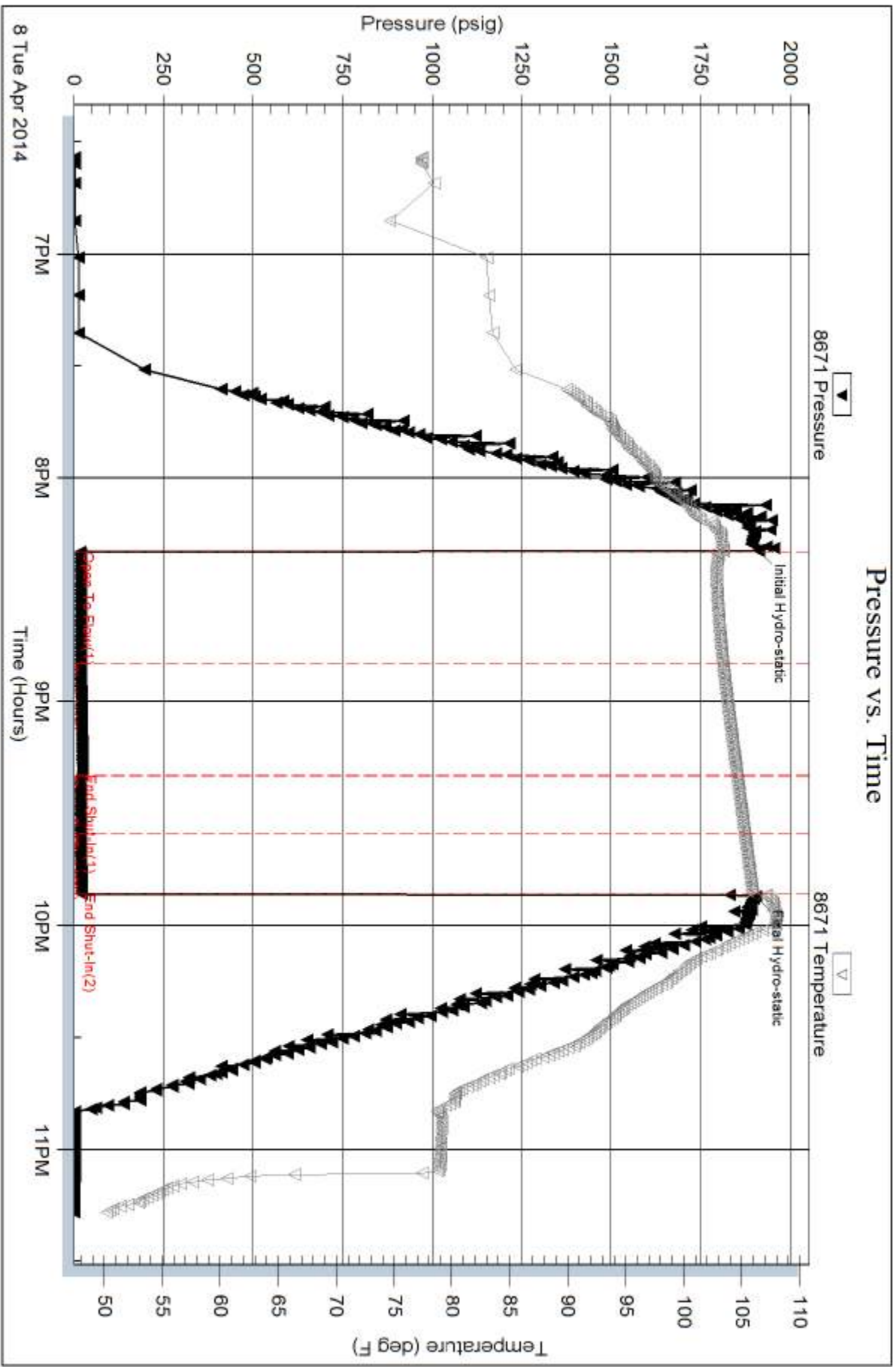
Num Gas Bombs: 0

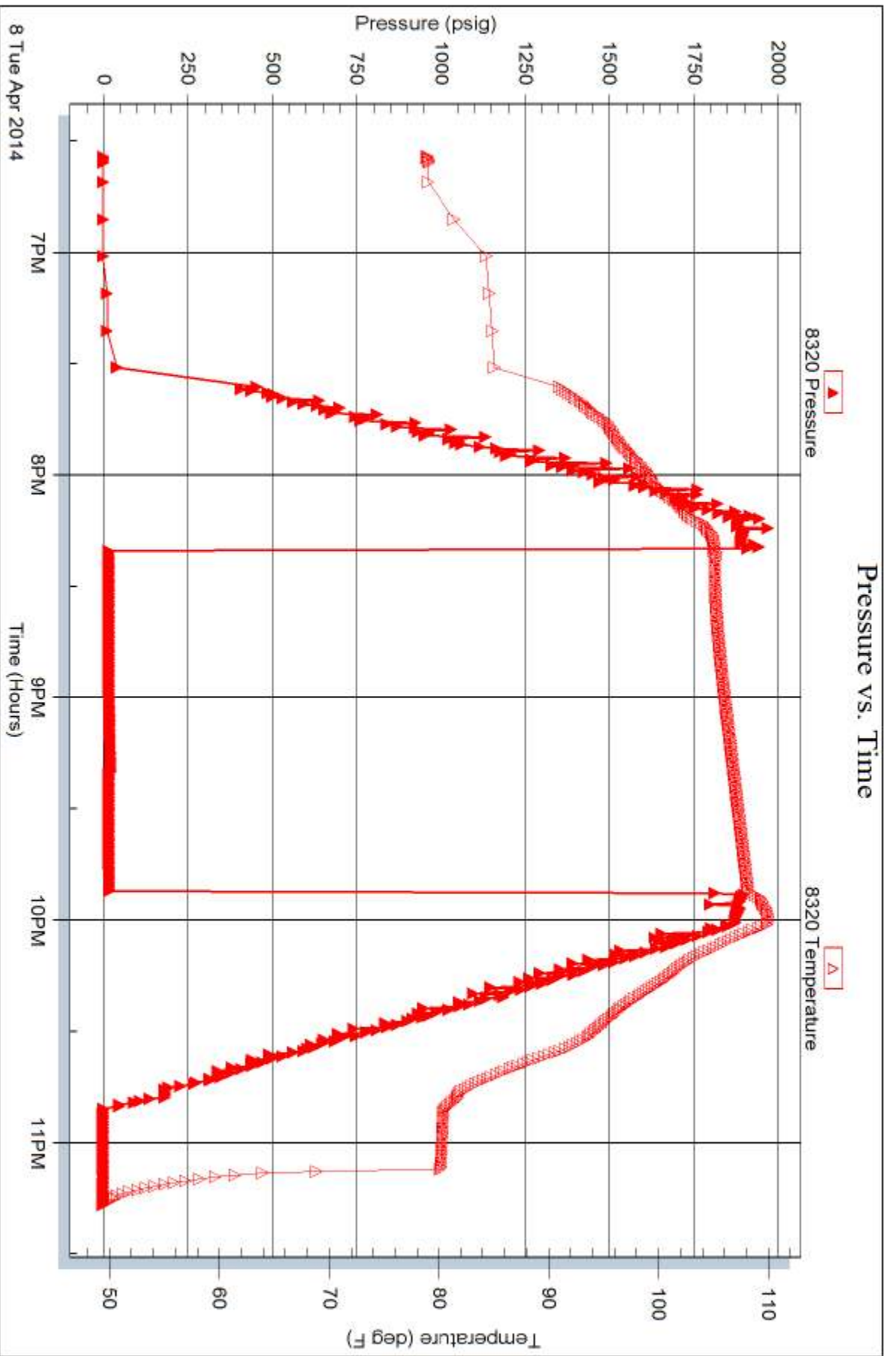
Serial #:

Laboratory Name:

Laboratory Location:

Recovery Comments:







TRILOBITE TESTING INC.

1515 Commerce Parkway • Hays, Kansas 67601

Test Ticket

NO. 56985

4/10

Well Name & No. KT Unit 'A' #1-18 Test No. 1 Date 4-5-14
 Company Cobalt Energy LLC Elevation 2478 KB 2469 GL
 Address 115 S Belmont #12 PO Box 8037 Wichita, KS 67208
 Co. Rep / Geo. Cory Baker Rig Southwind #8
 Location: Sec. 18 Twp. 10s Rge. 24w Co. Graham State KS

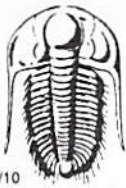
Interval Tested 3792 - 3815 Zone Tested LKC "C"
 Anchor Length 23 Drill Pipe Run 3793 Mud Wt. 8.8
 Top Packer Depth 3787 Drill Collars Run - Vis 54
 Bottom Packer Depth 3792 Wt. Pipe Run - WL 5.8
 Total Depth 3815 Chlorides 900 ppm System LCM 2
 Blow Description IF: Blow built to BOB (11") in 3 1/2 min.
ISI: Blowback built to 9 1/2"
FF: Blow built to BOB in 6 min.
FSI: Blowback built to BOB at 26 min.

Rec	Feet of	%gas	%oil	%water	%mud
<u>10</u>	<u>CO</u>	<u>-</u>	<u>98</u>	<u>-</u>	<u>2</u>
<u>100/90</u>	<u>C60</u>	<u>46</u>	<u>52</u>	<u>-</u>	<u>2</u>
<u>127</u>	<u>6MCO</u>	<u>38</u>	<u>49</u>	<u>-</u>	<u>13</u>
<u>63</u>	<u>50M</u>	<u>46</u>	<u>21</u>	<u>-</u>	<u>33</u>
Rec	Feet of <u>GIP=1575'</u>	%gas	%oil	%water	%mud

Rec Total 390 BHT 119 Gravity 38 API RW - @ - °F Chlorides - ppm

(A) Initial Hydrostatic 1840 Test 1150 T-On Location 20:00 4/5
 (B) First Initial Flow 38 Jars 250 T-Started 21:40
 (C) First Final Flow 89 Safety Joint 75 T-Open 00:07
 (D) Initial Shut-In 350 Circ Sub _____ T-Pulled 4:09
 (E) Second Initial Flow 94 Hourly Standby _____ T-Out 6:15 4/6
 (F) Second Final Flow 166 Mileage 140RT 217 Comments _____
 (G) Final Shut-In 348 Sampler _____
 (H) Final Hydrostatic 1828 Straddle _____ Ruined Shale Packer _____
 Shale Packer _____ Ruined Packer _____
 Extra Packer _____ Extra Copies _____
 Extra Recorder _____ Sub Total 0
 Day Standby _____ Total 1692
 Accessibility _____ MP/DST Disc't _____
 Sub Total 1692

Approved By _____ Our Representative James Winder
 Trilobite Testing Inc. shall not be liable for damaged of any kind of the property or personnel of the one for whom a test is made, or for any loss suffered or sustained, directly or indirectly, through the use of its equipment, or its statements or opinion concerning the results of any test, tools lost or damaged in the hole shall be paid for at cost by the party for whom the test is made.



TRILOBITE TESTING INC.

1515 Commerce Parkway • Hays, Kansas 67601

Test Ticket

NO. 56986

Well Name & No. KT Unit 'A' #1-18 Test No. 2 Date 4-6-14
 Company Cobalt Energy LLC Elevation 2478 KB 2469 GL
 Address 115 S Belmont #12 PO Box 8037 Wichita, KS 67208
 Co. Rep / Geo. Cory Baker Rig Southwind #8
 Location: Sec. 18 Twp. 10s Rge. 24w Co. Graham State KS

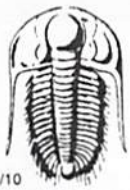
Interval Tested 3816 - 3845 Zone Tested LKC "D"
 Anchor Length 29 Drill Pipe Run 3793 Mud Wt. 9.0
 Top Packer Depth 3811 Drill Collars Run - Vis 51
 Bottom Packer Depth 3816 (shale) Wt. Pipe Run - WL 5.8
 Total Depth 3845 Chlorides 1000 ppm System LCM 2
 Blow Description IF: Blow built to BOB (11") in 8 3/4 min.
ISI: Blowback built to 3"
FF: Blow built to BOB in 8 min.
FSI: Blowback built to 5"

Rec	Feet of	%gas	%oil	%water	%mud
15	CO	4	95	-	1
10	SWMCO	3	87	3	7
53	SWCGO	15	80 mix	5	-
80	MWC50	18	28 clean 39 mix	10	5
45	50/mcw	-	5	80	15

Rec Total 203 Fluid 820 6IP BHT 122 Gravity 35.2 API RW 147 @ 51 °F Chlorides 72000 ppm

(A) Initial Hydrostatic <u>1850</u>	<input checked="" type="checkbox"/> Test <u>1150</u>	T-On Location <u>13:20</u>
(B) First Initial Flow <u>25</u>	<input checked="" type="checkbox"/> Jars <u>250</u>	T-Started <u>13:46</u>
(C) First Final Flow <u>55</u>	<input checked="" type="checkbox"/> Safety Joint <u>75</u>	T-Open <u>15:45</u>
(D) Initial Shut-In <u>848</u>	<input type="checkbox"/> Circ Sub	T-Pulled <u>19:47</u>
(E) Second Initial Flow <u>58</u>	<input type="checkbox"/> Hourly Standby	T-Out <u>21:45</u>
(F) Second Final Flow <u>100</u>	<input checked="" type="checkbox"/> Mileage <u>140RT</u> <u>217</u>	Comments _____
(G) Final Shut-In <u>822</u>	<input type="checkbox"/> Sampler	_____
(H) Final Hydrostatic <u>1833</u>	<input type="checkbox"/> Straddle	<input type="checkbox"/> Ruined Shale Packer _____
Initial Open <u>30</u>	<input checked="" type="checkbox"/> Shale Packer <u>250</u>	<input type="checkbox"/> Ruined Packer _____
Initial Shut-In <u>60</u>	<input type="checkbox"/> Extra Packer	<input type="checkbox"/> Extra Copies _____
Final Flow <u>60</u>	<input type="checkbox"/> Extra Recorder	Sub Total <u>0</u>
Final Shut-In <u>90</u>	<input type="checkbox"/> Day Standby	Total <u>1942</u>
	<input type="checkbox"/> Accessibility	MP/DST Disc't _____
	Sub Total <u>1942</u>	

Approved By _____ Our Representative James Winder
 Trilobite Testing Inc. shall not be liable for damaged of any kind of the property or personnel of the one for whom a test is made, or for any loss suffered or sustained, directly or indirectly, through the use of its equipment, or its statements or opinion concerning the results of any test, tools lost or damaged in the hole shall be paid for at cost by the party for whom the test is made.



TRILOBITE TESTING INC.

1515 Commerce Parkway • Hays, Kansas 67601

Test Ticket

NO. 56987

Well Name & No. KT Unit 'A' #1-18 Test No. 3 Date 4-7-14
 Company Cobalt Energy LLC Elevation 2478 KB 2469 GL
 Address 115 S Belmont #12 PO Box 8037 Wichita, KS 67208
 Co. Rep / Geo. Cory Baker Rig Southwind #8
 Location: Sec. 18 Twp. 10s Rge. 24w Co. Graham State KS

Interval Tested 3838-3865 Zone Tested LKC "F"
 Anchor Length 27 Drill Pipe Run 3825 Mud Wt. 9.1
 Top Packer Depth 3833 Drill Collars Run - Vis 52
 Bottom Packer Depth 3838 Wt. Pipe Run - WL 6.0
 Total Depth 3865 Chlorides 1100 ppm System LCM 2

Blow Description IF: Blow built to BOB(11") in 6 3/4 min.
ISI: Blowback built to 1/2"
FF: Blow built to BOB in 12 1/2 min.
FSI: Blowback built to 1"

Rec	Feet of	%gas	%oil	%water	%mud
<u>15</u>	<u>Oil</u>	<u>-</u>	<u>98%</u>	<u>-</u>	<u>2</u>
<u>63</u>	<u>MCW w/oil spots</u>	<u>4</u>	<u>1</u>	<u>65</u>	<u>30</u>
<u>487</u>	<u>MCW w/trace oil</u>	<u>2</u>	<u>trace</u>	<u>90</u>	<u>8</u>
<u>30</u>	<u>GMW w/trace oil</u>	<u>10</u>	<u>trace</u>	<u>45</u>	<u>45</u>
<u> </u>	<u>GIP=50'</u>	<u> </u>	<u> </u>	<u> </u>	<u> </u>

Rec Total 595 BHT 120 Gravity 37 API RW .617 @ 62.1 °F Chlorides 12,000 ppm

(A) Initial Hydrostatic 1840 Test 1150 T-On Location 7:15
 (B) First Initial Flow 38 Jars 250 T-Started 7:50
 (C) First Final Flow 154 Safety Joint 75 T-Open 9:40
 (D) Initial Shut-In 528 Circ Sub _____ T-Pulled 13:41
 (E) Second Initial Flow 160 Hourly Standby _____ T-Out 15:55
 (F) Second Final Flow 295 Mileage 140RT 217 Comments _____
 (G) Final Shut-In 527 Sampler _____
 (H) Final Hydrostatic 1829 Straddle _____ Ruined Shale Packer _____
 Shale Packer _____ Ruined Packer _____

Initial Open 30 Extra Packer _____ Extra Copies _____
 Initial Shut-In 60 Extra Recorder _____ Sub Total 0
 Final Flow 60 Day Standby _____ Total 1692
 Final Shut-In 90 Accessibility _____ MP/DST Disc't _____
 Sub Total 1692

Approved By _____ Our Representative James Winder

Trilobite Testing Inc. shall not be liable for damaged of any kind of the property or personnel of the one for whom a test is made, or for any loss suffered or sustained, directly or indirectly, through the use of its equipment, or its statements or opinion concerning the results of any test, tools lost or damaged in the hole shall be paid for at cost by the party for whom the test is made.



TRILOBITE TESTING INC.

1515 Commerce Parkway • Hays, Kansas 67601

Test Ticket

NO. 56988

4/10

Well Name & No. KT Unit 'A' #1-18 Test No. 4 Date 4-8-14
 Company Cobalt Energy LLC Elevation 2478 KB 2469 GL
 Address 115 S. Belmont #12 PO Box 8037 Wichita, KS 67208
 Co. Rep / Geo. Cory Baker Rig Southwind #8
 Location: Sec. 18 Twp. 10s Rge. 24w Co. Graham State KS

Interval Tested 3890 - 3920 Zone Tested LKC "H"
 Anchor Length 30 Drill Pipe Run 3888 Mud Wt. 9.1
 Top Packer Depth 3885 Drill Collars Run - Vis 60
 Bottom Packer Depth 3890 Wt. Pipe Run - WL 6.0
 Total Depth 3920 Chlorides 1100 ppm System LCM 2
 Blow Description IF: Blow built to 3"
ISI: No blowback
FF: 4' surge at open, bled off, blow built to 4 3/4"
FSI:

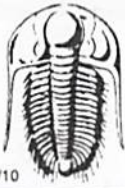
Rec	Feet of	%gas	%oil	%water	%mud
<u>20</u>	<u>MO</u>	<u>5</u>	<u>50</u>	<u>-</u>	<u>45</u>
Rec	Feet of <u>BJP=45'</u>	%gas	%oil	%water	%mud
Rec	Feet of	%gas	%oil	%water	%mud
Rec	Feet of	%gas	%oil	%water	%mud
Rec	Feet of	%gas	%oil	%water	%mud

Rec Total 20 BHT 111 Gravity - API RW - @ - °F Chlorides - ppm

(A) Initial Hydrostatic <u>1895</u>	<input checked="" type="checkbox"/> Test <u>1150</u>	T-On Location <u>1:00</u>
(B) First Initial Flow <u>16</u>	<input checked="" type="checkbox"/> Jars <u>250</u>	T-Started <u>1:25</u>
(C) First Final Flow <u>19</u>	<input checked="" type="checkbox"/> Safety Joint <u>75</u>	T-Open <u>3:16</u>
(D) Initial Shut-In <u>332</u>	<input type="checkbox"/> Circ Sub	T-Pulled <u>7:18</u>
(E) Second Initial Flow <u>15</u>	<input type="checkbox"/> Hourly Standby	T-Out <u>9:15</u>
(F) Second Final Flow <u>23</u>	<input checked="" type="checkbox"/> Mileage <u>140 RT 217</u>	Comments
(G) Final Shut-In <u>980</u>	<input type="checkbox"/> Sampler	
(H) Final Hydrostatic <u>1900</u>	<input type="checkbox"/> Straddle	
Initial Open <u>30</u>	<input type="checkbox"/> Shale Packer	<input type="checkbox"/> Ruined Shale Packer
Initial Shut-In <u>60</u>	<input type="checkbox"/> Extra Packer	<input type="checkbox"/> Ruined Packer
Final Flow <u>60</u>	<input type="checkbox"/> Extra Recorder	<input type="checkbox"/> Extra Copies
Final Shut-In <u>90</u>	<input type="checkbox"/> Day Standby	Sub Total <u>0</u>
	<input type="checkbox"/> Accessibility	Total <u>1692</u>
	Sub Total <u>1692</u>	MP/DST Disc't

Approved By _____ Our Representative James Winder

Trilobite Testing Inc. shall not be liable for damaged of any kind of the property or personnel of the one for whom a test is made, or for any loss suffered or sustained, directly or indirectly, through the use of its equipment, or its statements or opinion concerning the results of any test, tools lost or damaged in the hole shall be paid for at cost by the party for whom the test is made.



TRILOBITE TESTING INC.

1515 Commerce Parkway • Hays, Kansas 67601

Test Ticket

NO. 56989

Well Name & No. KT Unit 'A' #1-18 Test No. 5 Date 4-8-14
 Company Cobalt Energy LLC Elevation 2478 KB 2469 GL
 Address 115 S. Belmont #12 PO Box 8037 Wichita, KS 67208
 Co. Rep / Geo. Cory Baker Rig Southwind #8
 Location: Sec. 18 Twp. 10s Rge. 24w Co. Graham State KS

Interval Tested 3924 - 3958 Zone Tested LKC "I-J"
 Anchor Length 34 Drill Pipe Run 3920 Mud Wt. 9.3
 Top Packer Depth 3919 Drill Collars Run - Vis 60
 Bottom Packer Depth 3924 Wt. Pipe Run - WL 5.4
 Total Depth 3958 Chlorides 1700 ppm System LCM 2
 Blow Description IF: Blow built to '4" +, slowly died back, dead at 30 min.
TSI: No blowback
FF: No blow
FSI: No blowback

Rec	Feet of	%gas	%oil	%water	%mud
<u>1</u>	<u>mud w/oil spots</u>	<u>-</u>	<u>2</u>	<u>-</u>	<u>98</u>
Rec	Feet of	%gas	%oil	%water	%mud
Rec	Feet of	%gas	%oil	%water	%mud
Rec	Feet of	%gas	%oil	%water	%mud
Rec	Feet of	%gas	%oil	%water	%mud

Rec Total 1 BHT 106 Gravity - API RW - @ - °F Chlorides - ppm

(A) Initial Hydrostatic <u>1912</u>	<input checked="" type="checkbox"/> Test <u>1150</u>	T-On Location <u>17:35</u>
(B) First Initial Flow <u>19</u>	<input checked="" type="checkbox"/> Jars <u>250</u>	T-Started <u>18:34</u>
(C) First Final Flow <u>20</u>	<input checked="" type="checkbox"/> Safety Joint <u>75</u>	T-Open <u>20:19</u>
(D) Initial Shut-In <u>25</u>	<input type="checkbox"/> Circ Sub	T-Pulled <u>21:51</u>
(E) Second Initial Flow <u>19</u>	<input type="checkbox"/> Hourly Standby	T-Out <u>23:10</u>
(F) Second Final Flow <u>20</u>	<input checked="" type="checkbox"/> Mileage <u>140RTx2</u> 434	Comments <u>loaded tools 4/9</u>
(G) Final Shut-In <u>22</u>	<input type="checkbox"/> Sampler	<input type="checkbox"/> Ruined Shale Packer
(H) Final Hydrostatic <u>1905</u>	<input type="checkbox"/> Straddle	<input type="checkbox"/> Ruined Packer
Initial Open <u>30</u>	<input type="checkbox"/> Shale Packer	<input type="checkbox"/> Extra Copies
Initial Shut-In <u>30</u>	<input type="checkbox"/> Extra Packer	Sub Total <u>0</u>
Final Flow <u>15</u>	<input type="checkbox"/> Extra Recorder	Total <u>1909</u>
Final Shut-In <u>15</u>	<input type="checkbox"/> Day Standby	MP/DST Disc't
	<input type="checkbox"/> Accessibility	
	Sub Total <u>1909</u>	

Approved By _____ Our Representative James Winder

Trilobite Testing Inc. shall not be liable for damaged of any kind of the property or personnel of the one for whom a test is made, or for any loss suffered or sustained, directly or indirectly, through the use of its equipment, or its statements or opinion concerning the results of any test, tools lost or damaged in the hole shall be paid for at cost by the party for whom the test is made.