



GEOLOGIST'S REPORT
DRILL TIME &
SAMPLE LOG

COMPANY **COBALT ENERGY, LLC**
LEASE **KT Unit 'A' #1-18**
FIELD **High Hill North-west**

LOCATION **864' FNL & 1290' FEL**
SEC. **18** TWP **10S** RGE **24W**
COUNTY **Graham** STATE **KS**

CONTRACTOR **Southwind Drilling, R/R #8**
SPUD **4/11/14** COMP **4/10/14**
RTD **4/09/14** LTD **4049'**
MUD UP **3451'** TYPE MUD **Chemical**

SAMPLES SAVED FROM **3600'** TO **RTD**
DRILLING TIME KEPT FROM **3600'** TO **RTD**
SAMPLES EXAMINED FROM **3600'** TO **RTD**

CONDUCTOR **MA**
SURFACE **8 5/8" @ 221'**
PRODUCTION **5 7/8" @ 4045'**

ELECTRICAL SURVEYS
DUAL INDICATOR/NEUTRON DENSITY

GEOLOGICAL SUPERVISION FROM **3600'** TO **RTD**
GEOLOGIST ON WELL **Corey N. Baker**

FORMATION TOPS
ANHYDRITE **2096 (+369)**
BASE OF ANHYDRITE **2131 (+334)**
HEEBNER **3736 (-1274)**
LANSING **3774 (-1308)**
STARK **3967 (-1497)**
BKC **4002 (-1537)**
LTD **4049 (-1584)**

SAMPLE
2096 (+369)
2131 (+334)
3736 (-1274)
3774 (-1308)
3967 (-1497)
4002 (-1537)
4049 (-1584)

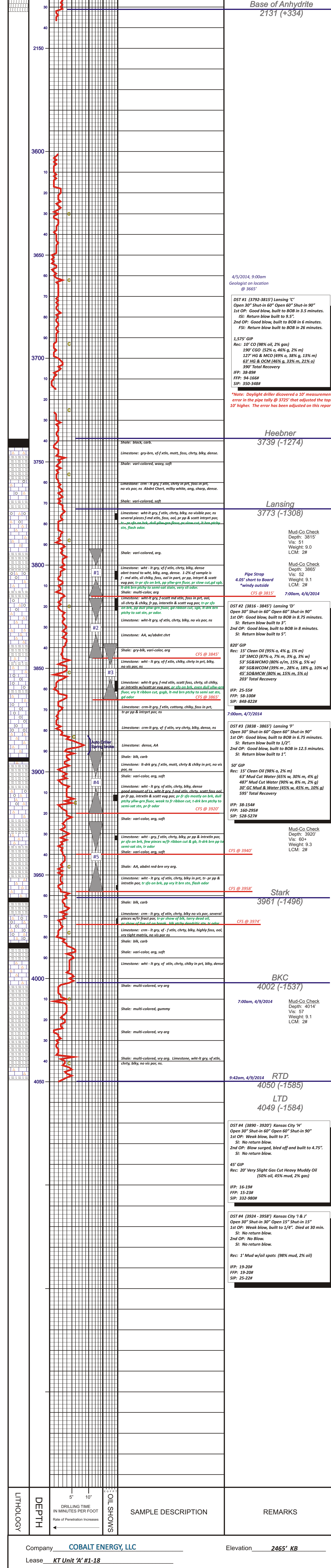
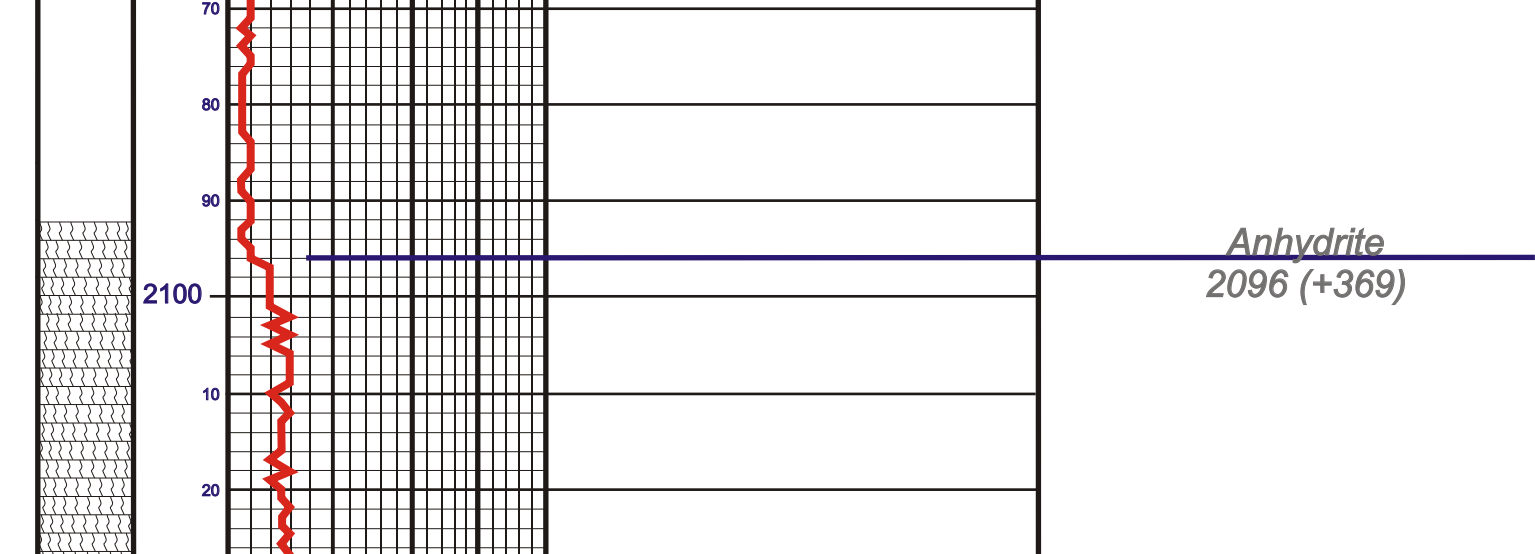


REMARKS **Due to the results of DST #1 & 2, it was recommended to run production casing to further test the productive potential of the KT Unit 'A' #1-18.**

Drill Stem testing done by James Winder of Trilobite Testing. Respectfully Submitted, Corey Baker Vice President - Exploration

API #15-065-24022-00-00

LEGEND



DEPTH, LITHOLOGY, OIL SHOWS, SAMPLE DESCRIPTION, REMARKS

Company **COBALT ENERGY, LLC** Elevation **2465' KB**
Lease **KT Unit 'A' #1-18**
Location **864' FNL & 1290' FEL** SEC. **18** TWP **10S** RGE **24W**
County **Graham** State **Kansas**