

**CONSOLIDATED**  
Oil Well Services, LLC

**REMIT TO**  
FINV  
Consolidated Oil Well Services, LLC  
Dept. 970  
P.O. Box 4346  
Houston, TX 77210-4346

MAIN OFFICE  
P.O. Box 884  
Chanute, KS 66720  
620/431-9210 • 1-800/467-8676  
Fax 620/431-0012

INVOICE

Invoice # 268247

Invoice Date: 05/19/2014 Terms: 15/15/30,n/30

Page 1

LARIO OIL & GAS  
P.O. BOX 1093  
GARDEN CITY KS 67846  
(316)265-5611

Rosas Trust 1-17  
~~ROSE TRUST 1-17~~  
43118  
17-19S-35W  
05-18-2014  
KS

drilling AFE 14-08  
5-23-14 LR

Part Number	Description	Qty	Unit Price	Total
1104S	CLASS "A" CEMENT (SALE)	250.00	18.5500	4637.50
1102	CALCIUM CHLORIDE (50#)	705.00	.9400	662.70
1118B	PREMIUM GEL / BENTONITE	470.00	.2700	126.90
4432	8 5/8" WOODEN PLUG	1.00	100.7500	100.75
Sublet Performed Description				Total
9996-130	CEMENT MATERIAL DISCOUNT			-829.18
9995-130	CEMENT EQUIPMENT DISCOUNT			-327.36
Description		Hours	Unit Price	Total
T-118	CEMENT PUMP (SURFACE)	1.00	1150.00	1150.00
T-118	EQUIPMENT MILEAGE (ONE WAY)	40.00	5.25	210.00
566	TON MILEAGE DELIVERY	1.00	822.40	822.40

Amount Due 8160.77 if paid after 06/18/2014

Parts:	5527.85	Freight:	.00	Tax:	382.94	AR	6936.65
Labor:	.00	Misc:	.00	Total:	6936.65		
Sublt:	-1156.54	Supplies:	.00	Change:	.00		

Signed \_\_\_\_\_ Date \_\_\_\_\_



**CONSOLIDATED**  
Oil Well Services, LLC

268247

TICKET NUMBER 43118

LOCATION Oakley, KS

FOREMAN Dane Rotloff

PO Box 884, Chanute, KS 66720  
620-431-9210 or 800-467-8676

**FIELD TICKET & TREATMENT REPORT**  
**CEMENT**

DATE	CUSTOMER #	WELL NAME & NUMBER	SECTION	TOWNSHIP	RANGE	COUNTY
5-18-14	4793	Rosen Trust # 1-17	17	19s	35w	Wichita
CUSTOMER			Mpreinthal			
MAILING ADDRESS			5 south			
CITY			1 east			
STATE			1 south			
ZIP CODE						

TRUCK #	DRIVER	TRUCK #	DRIVER
528 T118	Mike		
566	Robert		
Helpers	Lance		
	Jeremy		

JOB TYPE surface HOLE SIZE 12 1/4 HOLE DEPTH 370 CASING SIZE & WEIGHT 8 3/4 24 LBS  
 CASING DEPTH 370 DRILL PIPE 4.5 TUBING \_\_\_\_\_ OTHER \_\_\_\_\_  
 SLURRY WEIGHT 14.8 SLURRY VOL 1.36 WATER gal/sk 6.5 CEMENT LEFT IN CASING 00  
 DISPLACEMENT 22.3 DISPLACEMENT PSI \_\_\_\_\_ MIX PSI \_\_\_\_\_ RATE \_\_\_\_\_  
 REMARKS: Safety meeting. Rig up. Break circulation with rig pump. mix 250 sks of Class A 3% cc  
2% gal. shut down. Release plug. Displace 22.3 bbls of water. Shut in. Wash pump + lines  
Rig down. Cement did circulate

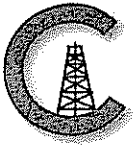
*Thanks Dane & crew*

ACCOUNT CODE	QUANTITY or UNITS	DESCRIPTION of SERVICES or PRODUCT	UNIT PRICE	TOTAL
5401s	1	PUMP CHARGE	1150.00	1150.00 ✓
5406	90	MILEAGE	5.25	210.00 ✓
5407	11.75	Tax Mileage Delivery	1.75	822.40 ✓
1104c	250sks	Class A Cement	18.55	4637.50 ✓
1102	705	Calcium Chloride	.94	662.70 ✓
1118B	470	Bentonite	.27	126.90 ✓
4432	1	8 5/8 wooden Plug	100.75	100.75 ✓
			Sub	7.710.00 ✓
			100% 18%	1156.54 ✓
			Sub	6553.71 ✓
<b>completed</b>				
SALES TAX				382.94 ✓
ESTIMATED TOTAL				69316.65 ✓

Ravin 3737

AUTHORIZATION *Carlos Rotloff* TITLE \_\_\_\_\_ DATE \_\_\_\_\_

I acknowledge that the payment terms, unless specifically amended in writing on the front of the form or in the customer's account records, at our office, and conditions of service on the back of this form are in effect for services identified on this form.



**CONSOLIDATED**  
Oil Well Services, LLC

**REMIT TO**  
Consolidated Oil Well Services, LLC  
Dept. 970  
P.O. Box 4346  
Houston, TX 77210-4346

MAIN OFFICE  
P.O. Box 884  
Chanute, KS 66720  
620/431-9210 • 1-800/467-8676  
Fax 620/431-0012

INVOICE

Invoice # 268504

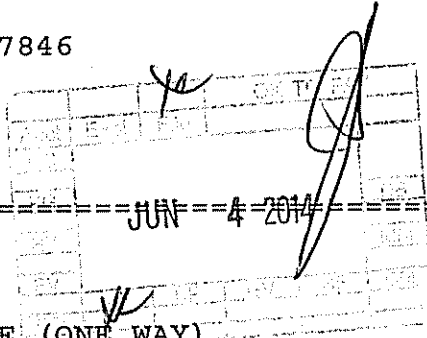
Invoice Date: 05/30/2014 Terms: 15/15/30,n/30

Page 1

LARIO OIL & GAS  
P.O. BOX 1093  
GARDEN CITY KS 67846  
(316)265-5611

ROSAS 1-17  
46868  
17-19S-35W  
05-29-2014  
KS

Rosas Trust 1-17  
drilling AFS 14-086  
6-2-14 LK



Description	Hours	Unit Price	Total
SINGLE PUMP	1.00	3175.00	3175.00
EQUIPMENT MILEAGE (ONE WAY)	40.00	5.25	210.00

Part Number	Description	Qty	Unit Price	Total
1126	OIL WELL CEMENT	235.00	23.7000	5569.50
1110A	KOL SEAL (50# BAG)	1175.00	.5600	658.00
1131	60/40 POZ MIX	530.00	15.8600	8405.80
1118B	PREMIUM GEL / BENTONITE	3647.00	.2700	984.69
1107	FLO-SEAL (25#)	133.00	2.8200	375.06
1144G	MUD FLUSH (SALE)	500.00	1.0000	500.00
4159	FLOAT SHOE AFU 5 1/2"	1.00	433.7500	433.75
4454	5 1/2" LATCH DOWN PLUG	1.00	567.0000	567.00
4130	CENTRALIZER 5 1/2"	15.00	61.0000	915.00
4104	CEMENT BASKET 5 1/2"	1.00	290.0000	290.00
4277A	DV TOOL-WEATHERFORD 5 1/2"	1.00	4900.0000	4900.00

Sublet Performed	Description	Total
9996-130	CEMENT MATERIAL DISCOUNT	-3539.82
9995-130	CEMENT EQUIPMENT DISCOUNT	-863.07

Description	Hours	Unit Price	Total
T-127 TON MILEAGE DELIVERY	1.00	1184.40	1184.40
693 TON MILEAGE DELIVERY	1.00	1184.40	1184.40

Amount Due 31275.90 if paid after 06/29/2014

Parts:	23598.80	Freight:	.00	Tax:	1634.80	AR	26584.51
Labor:	.00	Misc:	.00	Total:	26584.51		
Sublt:	-4402.89	Supplies:	.00	Change:	.00		

Signed \_\_\_\_\_ Date \_\_\_\_\_



**CONSOLIDATED**  
Oil Well Services, LLC

268504

TICKET NUMBER 46868  
LOCATION Oakley KS  
FOREMAN Jerry Yoder  
Miles 5

PO Box 884, Chanute, KS 66720  
620-431-9210 or 800-467-8676

**FIELD TICKET & TREATMENT REPORT**  
**CEMENT**

DATE	CUSTOMER #	WELL NAME & NUMBER	SECTION	TOWNSHIP	RANGE	COUNTY
5-29-14	4793	Rosas 1-17	17	19S	35W	Wichita
CUSTOMER			TRUCK #		DRIVER	
LAND OIL & GAS			731		Michael R	
MAILING ADDRESS			693		Jake H	
CITY			529-T127		Rob S	
STATE			ZIP CODE			

JOB TYPE 2 stage HOLE SIZE 7 7/8 HOLE DEPTH 5154 CASING SIZE & WEIGHT 5 1/2 15.5#  
 CASING DEPTH 5125 DRILL PIPE \_\_\_\_\_ TUBING \_\_\_\_\_ OTHER DV tool on top of 66 @ 2420  
 SLURRY WEIGHT 14.2/125 SLURRY VOL \_\_\_\_\_ WATER gal/sk \_\_\_\_\_ CEMENT LEFT in CASING 21'  
 DISPLACEMENT 12 1/2 DISPLACEMENT PSI \_\_\_\_\_ MIX PSI \_\_\_\_\_ RATE \_\_\_\_\_

REMARKS: Safety meeting & rig up on HA rig run float equip. centralizers on 1, 4, 7, 10, 13, 16, 19, 22, 25, 28, 31, 34, 37, 40, 43, 46, 49, 52, basket on 66 1/2 way up DV tool on top of 66 @ 2420  
run casing to bottom circulate 1 1/2 hrs pump 5 bbl water 500 gal mud flush, 5 bbl spacer mix  
235 sks OWC 5# Kalsol prsk shut down release plug clean pump & lines displace 60 @ 0.6 mud  
1000# lift, land 1600# release back float hold dropped dart opened tool @ 900# circulate 3 hrs  
mix 480 sks 60/40 8% gel 74# flosol shut down & release plug, wash pumps & lines  
displace with 57 bbl @ 1100# lift of 600# landed @ 1500# tool closed released back &  
float held circulated approx 30 bbl to pit

Thank you Jerry & crew

30 sks Rh 20 sks Mh

ACCOUNT CODE	QUANTITY or UNITS	DESCRIPTION of SERVICES or PRODUCT	UNIT PRICE	TOTAL
5401c	1	PUMP CHARGE	3175.00	3175.00
5406	40	MILEAGE	5.25	210.00
5407A	33.84	ton mileage delivery	1.75	2368.80
1126	235 sks	OWC	23.70	5569.50
110A	1175#	Kalsol	56	6580.00
1131	530 sks	60/40 mud mix	15.85	8405.00
1186	3647#	heat treat gel	27	98469.00
1107	133#	flosol	2.82	3759.60
1144g	500 gal	mud flush	1.00	500.00
4157	1	5 1/2 AFU float shoe	433.25	433.25
4454	1	5 1/2 latch down assy	567.00	567.00
4130	15	5 1/2 centralizers	61.00	915.00
4104	1	5 1/2 baskets	290.00	290.00
4277A	1	5 1/2 DV Tool	4900.00	4900.00
			Subtotal	29352.60
			less 15% disc	4402.88
			Subtotal	24949.72
			SALES TAX	1634.80
			ESTIMATED TOTAL	26584.51

completed

AUTHORIZATION [Signature] TITLE \_\_\_\_\_ DATE 5-29-14  
 I acknowledge that the payment terms, unless specifically amended in writing on the front of the form or in the customer's account records, at our office, and conditions of service on the back of this form are in effect for services identified on this form.



**TRILOBITE TESTING, INC.**

## DRILL STEM TEST REPORT

Lario Oil & Gas  
301 S market St  
Wichita, KS 67202  
ATTN: Ian Bosmeijer

17-19s-35w Wichita, Ks  
**Rosas Trust 1-17**  
Job Ticket: 56485      DST#: 1  
Test Start: 2014.05.23 @ 01:25:15

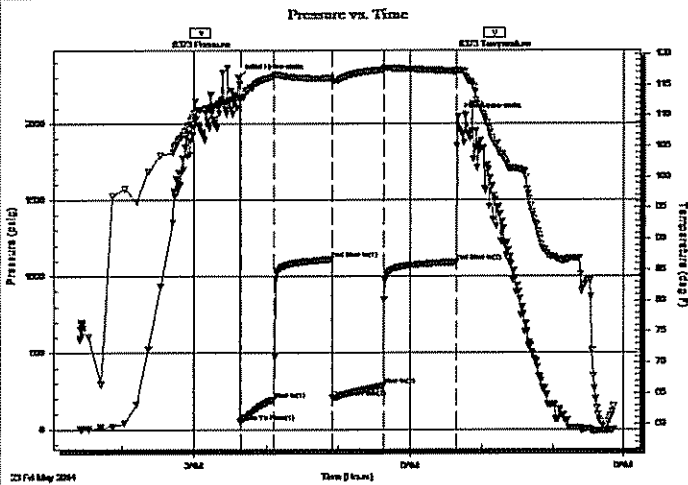
### GENERAL INFORMATION:

Formation: **Lansing I**  
Deviated: No Whipstock:      ft (KB)  
Time Tool Opened: 03:38:45  
Time Test Ended: 08:51:15  
Interval: **4262.00 ft (KB) To 4300.00 ft (KB) (TVD)**  
Total Depth: **4300.00 ft (KB) (TVD)**  
Hole Diameter: **7.88 inches** Hole Condition: **Good**

Test Type: **Conventional Bottom Hole (Initial)**  
Tester: **Brandon Turley**  
Unit No: **60**  
Reference Elevations: **3193.00 ft (KB)**  
**3182.00 ft (CF)**  
KB to GR/CF: **11.00 ft**

**Serial #: 8373**      **Inside**  
Press@RunDepth: **284.89 psig @ 4263.00 ft (KB)**  
Start Date: **2014.05.23**      End Date: **2014.05.23**      Capacity: **8000.00 psig**  
Start Time: **01:25:20**      End Time: **08:51:14**      Last Calib.: **2014.05.23**  
Time On Btm: **2014.05.23 @ 03:37:15**  
Time Off Btm: **2014.05.23 @ 06:40:15**

TEST COMMENT: IF: 1/4 blow BOB in 18 min.  
IS: No return.  
FF: Surface blow BOB in 30 min.  
FS: No return.



### PRESSURE SUMMARY

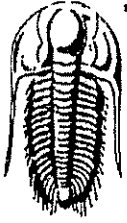
Time (Min.)	Pressure (psig)	Temp (deg F)	Annotation
0	2299.81	113.01	Initial Hydro-static
2	45.38	112.56	Open To Flow (1)
30	193.98	116.35	Shut-In(1)
78	1110.55	116.09	End Shut-In(1)
79	205.89	115.64	Open To Flow (2)
121	284.89	117.38	Shut-In(2)
182	1092.52	117.14	End Shut-In(2)
183	2043.18	117.19	Final Hydro-static

### Recovery

Length (ft)	Description	Volume (bbl)
188.00	mcw 90%w 10%m	0.92
282.00	mcw 80%w 20%m	2.34
188.00	mcw 70%w 30%m	2.64

### Gas Rates

	Choke (Inches)	Pressure (psig)	Gas Rate (Mcf/d)



**TRILOBITE  
TESTING, INC.**

**DRILL STEM TEST REPORT**

**FLUID SUMMARY**

Lario Oil & Gas

**17-19s-35w Wichita, Ks**

301 S market St  
Wichita, KS 67202

**Rosas Trust 1-17**

Job Ticket: 56485

DST#: 1

ATTN: Ian Bosmeijer

Test Start: 2014.05.23 @ 01:25:15

**Mud and Cushion Information**

Mud Type: Gel Chem

Cushion Type:

Oil API:

0 deg API

Mud Weight: 9.00 lb/gal

Cushion Length:

ft

Water Salinity:

23000 ppm

Viscosity: 59.00 sec/qt

Cushion Volume:

bbl

Water Loss: 8.79 in<sup>2</sup>

Gas Cushion Type:

Resistivity: 0.00 ohm.m

Gas Cushion Pressure:

psig

Salinity: 5000.00 ppm

Filter Cake: 1.00 inches

**Recovery Information**

Recovery Table

Length ft	Description	Volume bbl
188.00	mcw 90%w 10%m	0.925
282.00	mcw 80%w 20%m	2.343
188.00	mcw 70%w 30%m	2.637

Total Length: 658.00 ft      Total Volume: 5.905 bbl

Num Fluid Samples: 0

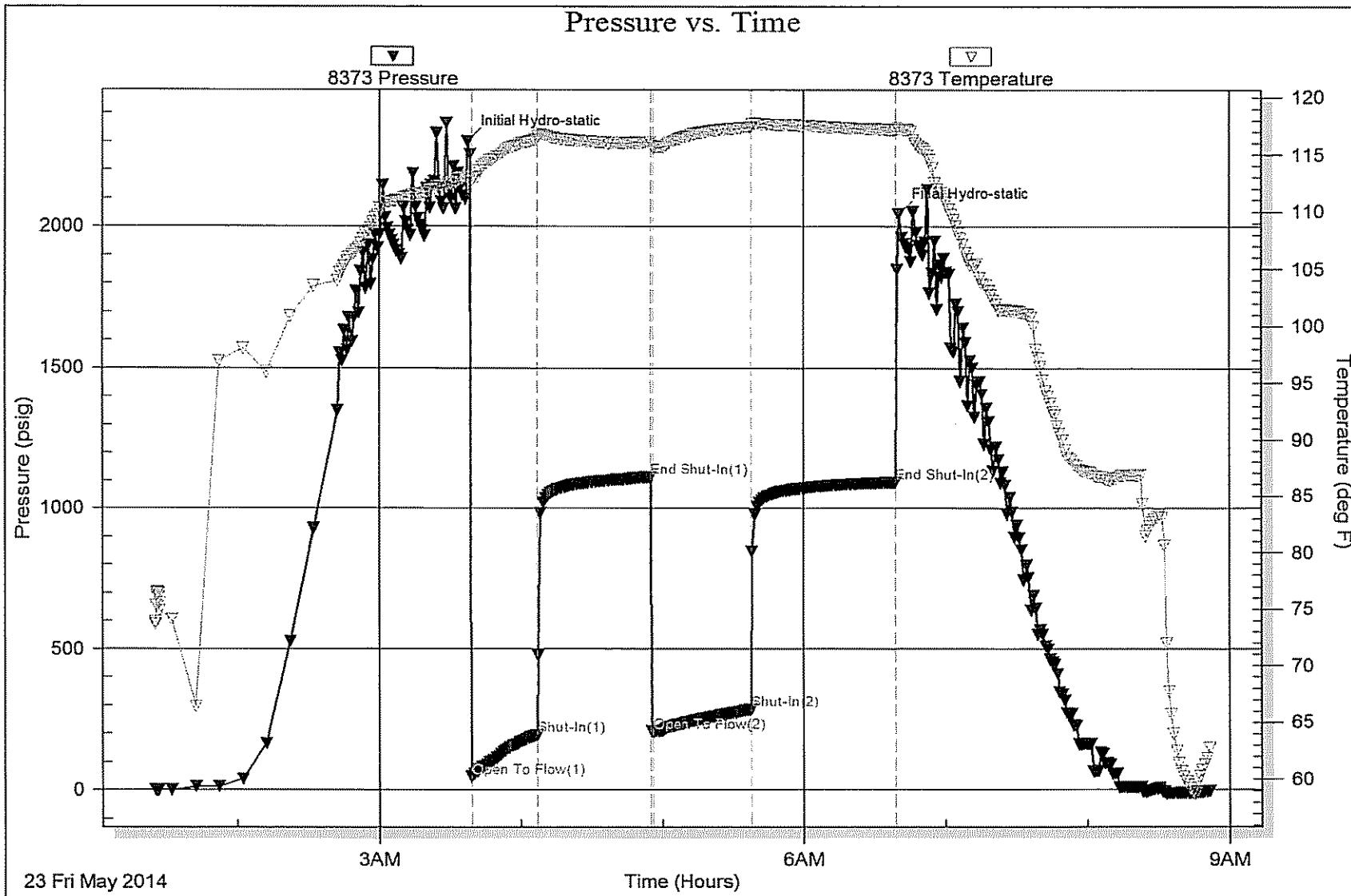
Num Gas Bombs: 0

Serial #:

Laboratory Name:

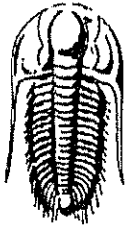
Laboratory Location:

Recovery Comments: .34@61=23000









**TRILOBITE  
TESTING, INC.**

## DRILL STEM TEST REPORT

**FLUID SUMMARY**

Lario Oil & Gas

17-19s-35w Wichita, Ks

301 S market St  
Wichita, KS 67202

Rosas Trust 1-17

Job Ticket: 56486

DST#: 2

ATTN: Ian Bosmeijer

Test Start: 2014.05.24 @ 20:31:24

### Mud and Cushion Information

Mud Type: Gel Chem

Cushion Type:

Oil API:

31 deg API

Mud Weight: 9.00 lb/gal

Cushion Length:

ft

Water Salinity:

0 ppm

Viscosity: 54.00 sec/qt

Cushion Volume:

bbbl

Water Loss: 7.99 in<sup>3</sup>

Gas Cushion Type:

Resistivity: 0.00 ohm.m

Gas Cushion Pressure:

psig

Salinity: 6300.00 ppm

Filter Cake: 1.00 inches

### Recovery Information

Recovery Table

Length ft	Description	Volume bbbl
188.00	mcgo 50%g 30%o 20%m	0.925
188.00	mcgo 40%g 50%o 10%m	1.025
470.00	mcgo 30%g 65%o 5%m	6.593
470.00	go 50%g 50%o	6.593
0.00	1222 GIP	0.000

Total Length: 1316.00 ft

Total Volume: 15.136 bbl

Num Fluid Samples: 0

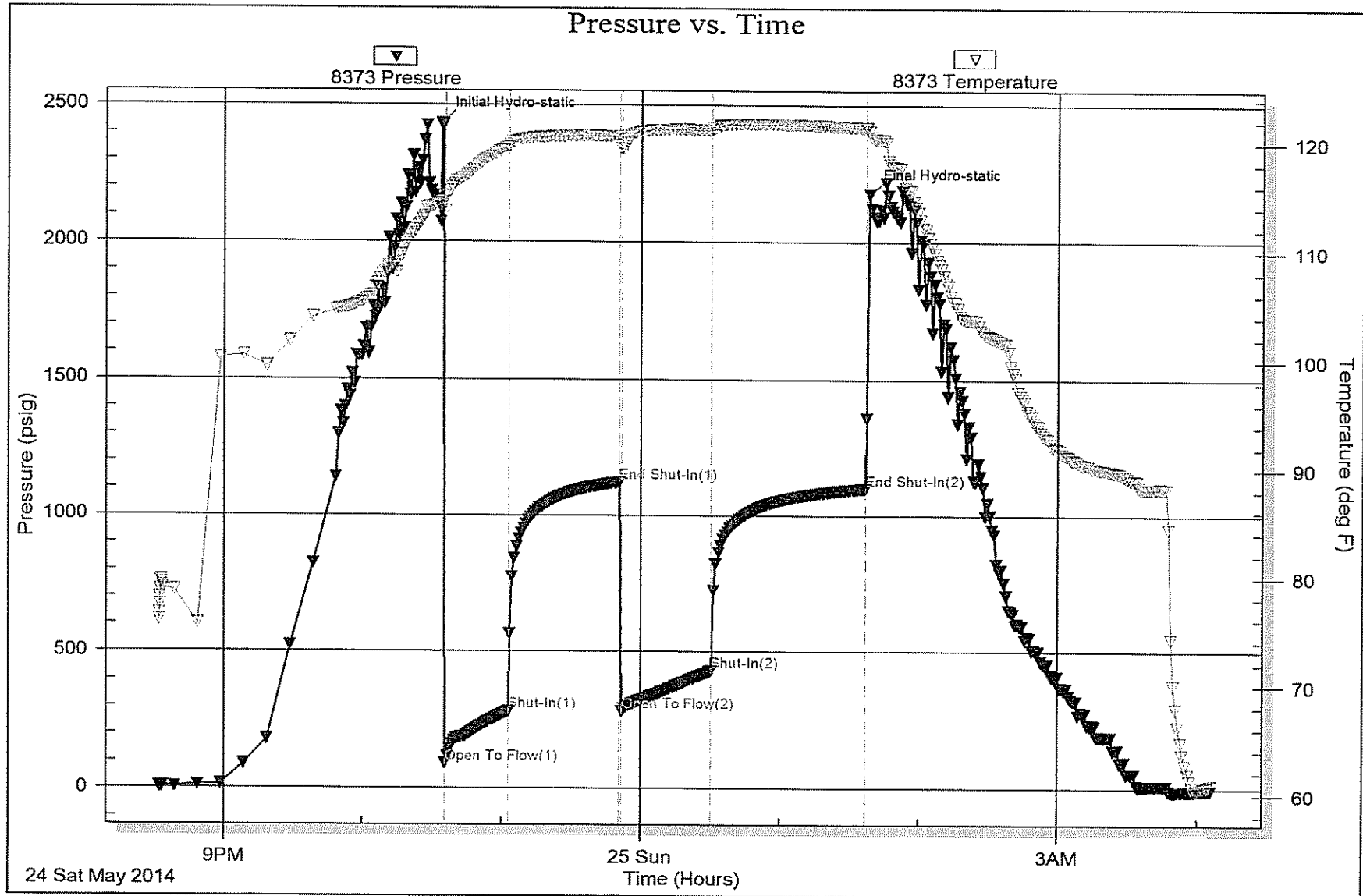
Num Gas Bombs: 0

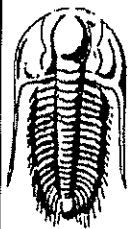
Serial #:

Laboratory Name:

Laboratory Location:

Recovery Comments: 31@60=31





**TRILOBITE TESTING, INC.**

## DRILL STEM TEST REPORT

Lario Oil & Gas

17-19s-35w Wichita, Ks

301 S market St  
Wichita, KS 67202

Rosas Trust 1-17

Job Ticket: 56487

DST#: 3

ATTN: Ian Bosmeijer

Test Start: 2014.05.25 @ 17:15:56

### GENERAL INFORMATION:

Formation: Pawnee

Deviated: No Whipstock: ft (KB)

Time Tool Opened: 19:34:26

Time Test Ended: 00:27:56

Test Type: Conventional Bottom Hole (Reset)

Tester: Brandon Turley

Unit No: 60

Interval: 4570.00 ft (KB) To 4630.00 ft (KB) (TVD)

Reference Elevations: 3193.00 ft (KB)

Total Depth: 4630.00 ft (KB) (TVD)

3182.00 ft (CF)

Hole Diameter: 7.88 inches Hole Condition: Good

KB to GR/CF: 11.00 ft

Serial #: 8373

Inside

Press@RunDepth: 297.90 psig @ 4571.00 ft (KB)

Capacity: 8000.00 psig

Start Date: 2014.05.25

End Date: 2014.05.26

Last Calib.: 2014.05.26

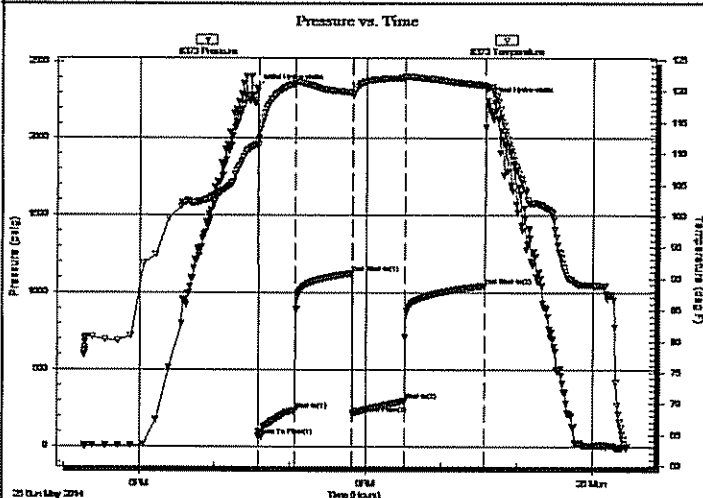
Start Time: 17:16:01

End Time: 00:27:55

Time On Btm: 2014.05.25 @ 19:32:56

Time Off Btm: 2014.05.25 @ 22:36:26

TEST COMMENT: IF: BOB in 16 min.  
IS: No return.  
FF: BOB in 30 min.  
FS: No return.



### PRESSURE SUMMARY

Time (Min.)	Pressure (psig)	Temp (deg F)	Annotation
0	2325.99	111.44	Initial Hydro-static
2	67.86	111.32	Open To Flow (1)
31	236.06	121.20	Shut-In (1)
76	1124.69	119.80	End Shut-In (1)
77	214.00	119.42	Open To Flow (2)
118	297.90	122.15	Shut-In (2)
181	1045.53	120.96	End Shut-In (2)
184	2247.65	120.62	Final Hydro-static

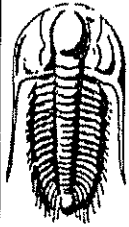
### Recovery

Length (ft)	Description	Volume (bbl)
470.00	mcw 95%w 5%m	3.27
188.00	mcw 70%w 30%m	2.64

\* Recovery from multiple tests

### Gas Rates

	Choke (inches)	Pressure (psig)	Gas Rate (Mcf/d)



**TRILOBITE  
TESTING, INC.**

## DRILL STEM TEST REPORT

FLUID SUMMARY

Larlo Oil & Gas

17-19s-35w Wichita, Ks

301 S market St  
Wichita, KS 67202

Rosas Trust 1-17

Job Ticket: 56487

DST#: 3

ATTN: Ian Bosmeijer

Test Start: 2014.05.25 @ 17:15:56

### Mud and Cushion Information

Mud Type: Gel Chem

Cushion Type:

Oil API:

0 deg API

Mud Weight: 9.00 lb/gal

Cushion Length:

ft

Water Salinity:

42000 ppm

Viscosity: 53.00 sec/qt

Cushion Volume:

bbf

Water Loss: 8.79 in<sup>3</sup>

Gas Cushion Type:

Resistivity: 0.00 ohm.m

Gas Cushion Pressure:

psig

Salinity: 6000.00 ppm

Filter Cake: 1.00 inches

### Recovery Information

Recovery Table

Length ft	Description	Volume bbf
470.00	mcw 95%w 5%m	3.268
188.00	mcw 70%w 30%m	2.637

Total Length: 658.00 ft

Total Volume: 5.905 bbl

Num Fluid Samples: 0

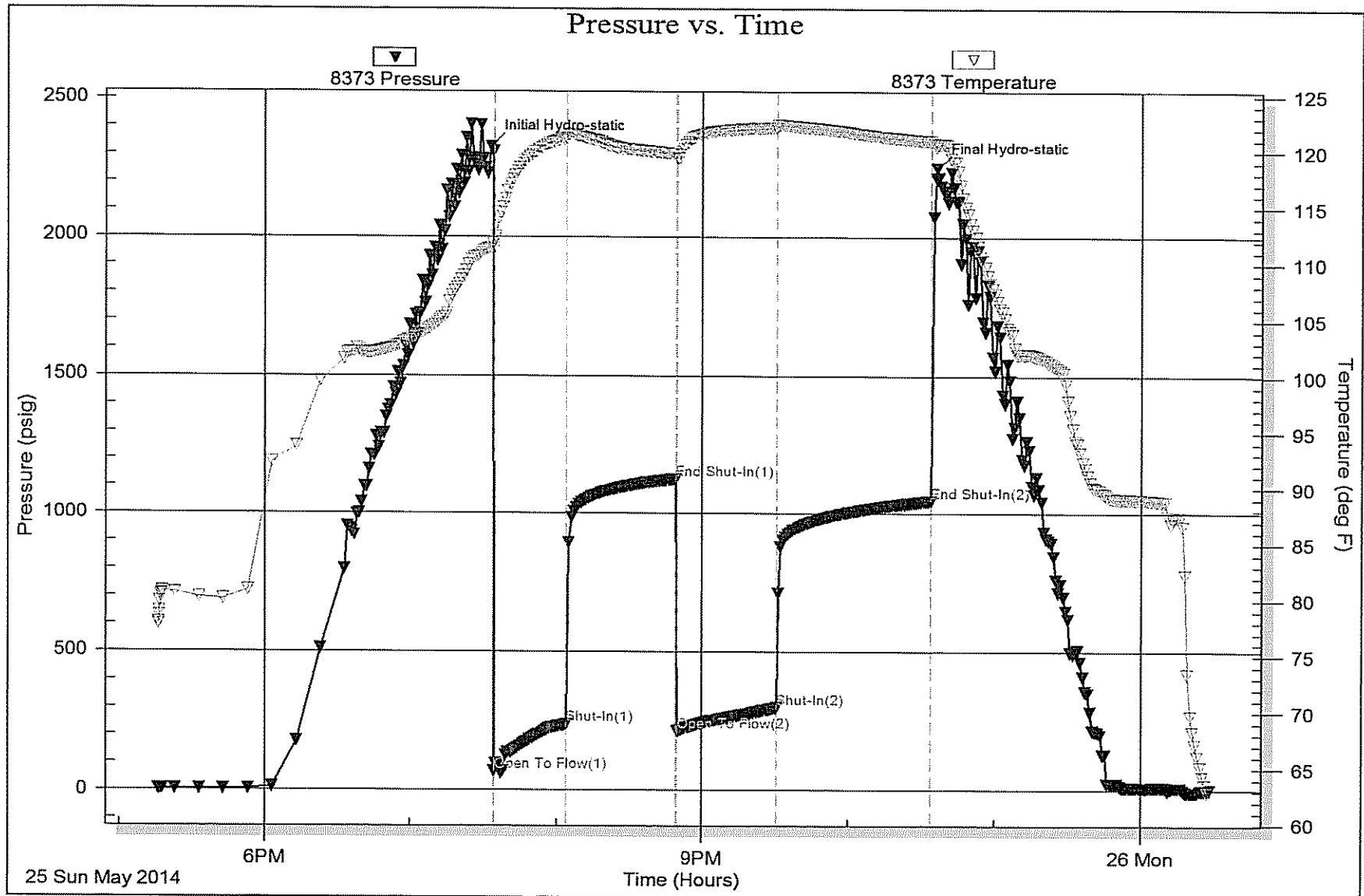
Num Gas Bombs: 0

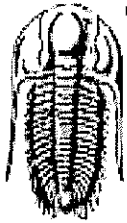
Serial #:

Laboratory Name:

Laboratory Location:

Recovery Comments: .18@67=42000





**TRILOBITE TESTING, INC**

**DRILL STEM TEST REPORT**

Lario Oil & Gas

17-19s-35w Wichita, Ks

301 S market St  
Wichita, KS 67202

Rosas Trust 1-17

Job Ticket: 56488

DST#: 4

ATTN: Ian Bosmeijer

Test Start: 2014.05.27 @ 08:08:10

**GENERAL INFORMATION:**

Formation: **Marrow**  
 Deviated: No Whipstock: ft (KB)  
 Time Tool Opened: 10:22:10  
 Time Test Ended: 15:29:10

Test Type: Conventional Bottom Hole (Reset)  
 Tester: Brandon Turley  
 Unit No: 60

Interval: **4840.00 ft (KB) To 4903.00 ft (KB) (TVD)**  
 Total Depth: **4903.00 ft (KB) (TVD)**  
 Hole Diameter: **7.88 inches** Hole Condition: Good

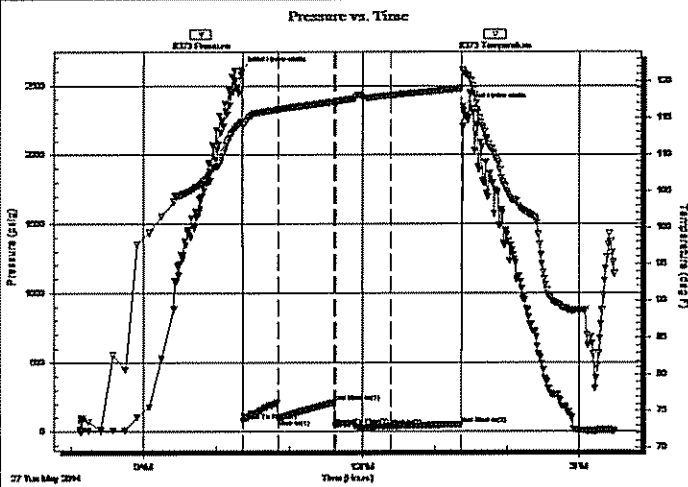
Reference Elevations: **3193.00 ft (KB)**  
**3182.00 ft (CF)**  
 KB to GR/CF: **11.00 ft**

**Serial #: 8373** Inside

Press@RunDepth: **37.38 psig @ 4841.00 ft (KB)**  
 Start Date: **2014.05.27** End Date: **2014.05.27**  
 Start Time: **08:08:15** End Time: **15:29:09**

Capacity: **8000.00 psig**  
 Last Calib.: **2014.05.27**  
 Time On Btm: **2014.05.27 @ 10:20:40**  
 Time Off Btm: **2014.05.27 @ 13:23:40**

TEST COMMENT: IF: Weak surface blow died in 3 min.  
 IS: No return.  
 FF: No blow.  
 FS: No return.



**PRESSURE SUMMARY**

Time (Min.)	Pressure (psig)	Temp (deg F)	Annotation
0	2614.68	114.29	Initial Hydro-static
2	75.24	114.07	Open To Flow (1)
30	88.24	116.05	Shut-In(1)
77	211.60	117.15	End Shut-In(1)
78	42.71	117.04	Open To Flow (2)
123	37.38	118.03	Shut-In(2)
182	49.08	118.96	End Shut-In(2)
183	2347.21	121.31	Final Hydro-static

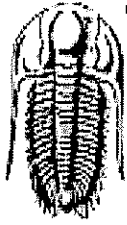
**Recovery**

Length (ft)	Description	Volume (bbl)
5.00	mud 100% m	0.02
0.00	really thick mud in tool	0.00

\* Recovery from multiple tests

**Gas Rates**

	Choke (Inches)	Pressure (psig)	Gas Rate (Mcf/d)



**TRILOBITE**  
TESTING, INC

**DRILL STEM TEST REPORT**

**FLUID SUMMARY**

Lario Oil & Gas

17-19s-35w Wichita, Ks

301 S market St  
Wichita, KS 67202

Rosas Trust 1-17

Job Ticket: 56488

DST#: 4

ATTN: Ian Bosmeijer

Test Start: 2014.05.27 @ 08:08:10

**Mud and Cushion Information**

Mud Type: Gel Chem

Cushion Type:

Oil API:

0 deg API

Mud Weight: 9.00 lb/gal

Cushion Length:

ft

Water Salinity:

0 ppm

Viscosity: 53.00 sec/qt

Cushion Volume:

bbf

Water Loss: 8.78 in<sup>2</sup>

Gas Cushion Type:

Resistivity: 0.00 ohm.m

Gas Cushion Pressure:

psig

Salinity: 6500.00 ppm

Filter Cake: 1.00 inches

**Recovery Information**

Recovery Table

Length ft	Description	Volume bbf
5.00	mud 100%m	0.025
0.00	really thick mud in tool	0.000

Total Length: 5.00 ft

Total Volume: 0.025 bbf

Num Fluid Samples: 0

Num Gas Bombs: 0

Serial #:

Laboratory Name:

Laboratory Location:

Recovery Comments:

