



Confidentiality Requested:

Yes No

KANSAS CORPORATION COMMISSION 1210042
OIL & GAS CONSERVATION DIVISION

Form ACO-1

August 2013

Form must be Typed
Form must be Signed
All blanks must be Filled

WELL COMPLETION FORM
WELL HISTORY - DESCRIPTION OF WELL & LEASE

OPERATOR: License # _____

Name: _____

Address 1: _____

Address 2: _____

City: _____ State: _____ Zip: _____ + _____

Contact Person: _____

Phone: (_____) _____

CONTRACTOR: License # _____

Name: _____

Wellsite Geologist: _____

Purchaser: _____

Designate Type of Completion:

- New Well Re-Entry Workover
- Oil WSW SWD SIOW
- Gas D&A ENHR SIGW
- OG GSW Temp. Abd.
- CM (Coal Bed Methane)
- Cathodic Other (Core, Expl., etc.): _____

If Workover/Re-entry: Old Well Info as follows:

Operator: _____

Well Name: _____

Original Comp. Date: _____ Original Total Depth: _____

- Deepening Re-perf. Conv. to ENHR Conv. to SWD
- Plug Back Conv. to GSW Conv. to Producer
- Commingled Permit #: _____
- Dual Completion Permit #: _____
- SWD Permit #: _____
- ENHR Permit #: _____
- GSW Permit #: _____

Spud Date or Recompletion Date	Date Reached TD	Completion Date or Recompletion Date
-----------------------------------	-----------------	---

API No. 15 - _____

Spot Description: _____

_____ - _____ - _____ Sec. _____ Twp. _____ S. R. _____ East West

_____ Feet from North / South Line of Section

_____ Feet from East / West Line of Section

Footages Calculated from Nearest Outside Section Corner:

- NE NW SE SW

GPS Location: Lat: _____, Long: _____
(e.g. xx.xxxxx) (e.g. -xxx.xxxxx)

Datum: NAD27 NAD83 WGS84

County: _____

Lease Name: _____ Well #: _____

Field Name: _____

Producing Formation: _____

Elevation: Ground: _____ Kelly Bushing: _____

Total Vertical Depth: _____ Plug Back Total Depth: _____

Amount of Surface Pipe Set and Cemented at: _____ Feet

Multiple Stage Cementing Collar Used? Yes No

If yes, show depth set: _____ Feet

If Alternate II completion, cement circulated from: _____

feet depth to: _____ w/ _____ sx cmt.

Drilling Fluid Management Plan

(Data must be collected from the Reserve Pit)

Chloride content: _____ ppm Fluid volume: _____ bbls

Dewatering method used: _____

Location of fluid disposal if hauled offsite:

Operator Name: _____

Lease Name: _____ License #: _____

Quarter _____ Sec. _____ Twp. _____ S. R. _____ East West

County: _____ Permit #: _____

AFFIDAVIT

I am the affiant and I hereby certify that all requirements of the statutes, rules and regulations promulgated to regulate the oil and gas industry have been fully complied with and the statements herein are complete and correct to the best of my knowledge.

Submitted Electronically

KCC Office Use ONLY

- Confidentiality Requested
Date: _____
- Confidential Release Date: _____
- Wireline Log Received
- Geologist Report Received
- UIC Distribution
- ALT I II III Approved by: _____ Date: _____

1210042

Operator Name: _____ Lease Name: _____ Well #: _____

Sec. _____ Twp. _____ S. R. _____ East West County: _____

INSTRUCTIONS: Show important tops of formations penetrated. Detail all cores. Report all final copies of drill stems tests giving interval tested, time tool open and closed, flowing and shut-in pressures, whether shut-in pressure reached static level, hydrostatic pressures, bottom hole temperature, fluid recovery, and flow rates if gas to surface test, along with final chart(s). Attach extra sheet if more space is needed.

Final Radioactivity Log, Final Logs run to obtain Geophysical Data and Final Electric Logs must be emailed to kcc-well-logs@kcc.ks.gov. Digital electronic log files must be submitted in LAS version 2.0 or newer AND an image file (TIFF or PDF).

Drill Stem Tests Taken <i>(Attach Additional Sheets)</i>	<input type="checkbox"/> Yes <input type="checkbox"/> No	<input type="checkbox"/> Log	Formation (Top), Depth and Datum	<input type="checkbox"/> Sample
Samples Sent to Geological Survey	<input type="checkbox"/> Yes <input type="checkbox"/> No	Name	Top	Datum
Cores Taken	<input type="checkbox"/> Yes <input type="checkbox"/> No			
Electric Log Run	<input type="checkbox"/> Yes <input type="checkbox"/> No			
List All E. Logs Run:				

CASING RECORD <input type="checkbox"/> New <input type="checkbox"/> Used							
Report all strings set-conductor, surface, intermediate, production, etc.							
Purpose of String	Size Hole Drilled	Size Casing Set (In O.D.)	Weight Lbs. / Ft.	Setting Depth	Type of Cement	# Sacks Used	Type and Percent Additives

ADDITIONAL CEMENTING / SQUEEZE RECORD				
Purpose:	Depth Top Bottom	Type of Cement	# Sacks Used	Type and Percent Additives
<input type="checkbox"/> Perforate				
<input type="checkbox"/> Protect Casing				
<input type="checkbox"/> Plug Back TD				
<input type="checkbox"/> Plug Off Zone				

Did you perform a hydraulic fracturing treatment on this well? Yes No *(If No, skip questions 2 and 3)*

Does the volume of the total base fluid of the hydraulic fracturing treatment exceed 350,000 gallons? Yes No *(If No, skip question 3)*

Was the hydraulic fracturing treatment information submitted to the chemical disclosure registry? Yes No *(If No, fill out Page Three of the ACO-1)*

Shots Per Foot	PERFORATION RECORD - Bridge Plugs Set/Type Specify Footage of Each Interval Perforated	Acid, Fracture, Shot, Cement Squeeze Record <i>(Amount and Kind of Material Used)</i>	Depth

TUBING RECORD: Size: _____ Set At: _____ Packer At: _____ Liner Run: Yes No

Date of First, Resumed Production, SWD or ENHR. _____ Producing Method:
 Flowing Pumping Gas Lift Other *(Explain)* _____

Estimated Production Per 24 Hours	Oil Bbls.	Gas Mcf	Water Bbls.	Gas-Oil Ratio	Gravity

DISPOSITION OF GAS: <input type="checkbox"/> Vented <input type="checkbox"/> Sold <input type="checkbox"/> Used on Lease <i>(If vented, Submit ACO-18.)</i>	METHOD OF COMPLETION: <input type="checkbox"/> Open Hole <input type="checkbox"/> Perf. <input type="checkbox"/> Dually Comp. <input type="checkbox"/> Commingled <i>(Submit ACO-5)</i> <i>(Submit ACO-4)</i> <input type="checkbox"/> Other <i>(Specify)</i> _____	PRODUCTION INTERVAL: _____ _____
--	---	---

Form	ACO1 - Well Completion
Operator	HERMAN L. LOEB, LLC
Well Name	RANDEL 2-20
Doc ID	1210042

Tops

Name	Top	Datum
Chase	2450	-230
Heebner Shale	4042	-1822
Lansing A	4203	-1983
Lansing/KC H	4362	-2142
KC I	4412	-2192
KC J	4452	-2232
Base Kansas City	4584	-2364
Reworked Miss	4760	-2540
Miss. Chert	4772	-2552
Kinderhook Sand	4847	-2627

LITHOLOGY STRIP LOG

WellSight Systems

Scale 1:240 (5"=100') Imperial

Well Name: Randel #2-20
Location: 1660' FSL & 1660' FWL, Sec. 20-T27S-R18W, Kiowa Co., KS.
Licence Number: 15-097-21787-00-00
Spud Date: 3/8/2014
Surface Coordinates: 1660' FSL & 1660' FWL, Sec. 20-T27S-R18W
Region: Einsel North
Drilling Completed: 3/16/2014

Bottom Hole Same as above
Coordinates:
Ground Elevation (ft): 2207' K.B. Elevation (ft): 2220'
Logged Interval (ft): 3900' To: 4900' Total Depth (ft): 4900'
Formation: Kinderhook at Total Depth
Type of Drilling Fluid: Freshwater/Gel to 3293'; Chemical Gel 3293' to 4900'

Printed by MUD.LOG from WellSight Systems 1-800-447-1534 www.WellSight.com

OPERATOR

Company: Herman L. Loeb, LLC.
Address: P.O. Box 838
Lawrenceville, IL. 62439-0838

GEOLOGIST

Name: Jon D. Christensen
Company: Consulting Petroleum Geologist
Address: 9002 W. Silver Hollow St.
Wichita, KS. 67205-8856

Cores

None Taken

DSTs

DST #1(Lansing 'A' zone) 4205' - 4221'(Corrected Depths to Log) Test Times 15"-45"-45"-90" IFP Strong Blow BOB/9 Min., FFP Fair to Strong Blow BOB/22 Min., no Blowback on SI's; REC: 450' Gas in Pipe, 30' OCM(2%O, 98%M), no Water; IFP 17-22#, ISIP 924#, FFP 17-31#, FSIP 1011# and Building; IHP 2125#, FHP 2070#, BHT 115 Deg. F.

DST #2(Kansas City 'I') 4407' - 4425' Test Times 15"-45"-45"-90" IFP Strong Blow BOB/ 90 Sec., FFP Strong Blow Gas To Surface in 19 Min., Volume Not Available (Burns Bright Orange Flame), 6" Blowback on FSI; REC: 65' CGO(40 Deg. API), 230' GW&MCO(55%G, 25%O, 12%W, 8%M), 60' OCSW(3%O, 97%W) CI 48,000, Mud 5000; IFP 35-65#, ISIP 1381#, FFP 64-132#, FSIP 1374#, IHP 2202#, FHP 2181#, BHT 119 Deg. F.

DST #3(Kansas City 'I' + 'J' zones) 4436' - 4466' Test Times 15"-45"-45"-90" IFP Strong Blow BOB/2 Min., FFP Strong Blow BOB/4 Min, no Gas to Surface, BOB Blowback on FSI; REC: 930' Gas in Pipe, 150' GOCMW(30%G, 18%O, 27%W, 25%M), 840' GSW(6%G, 94%W) CI 113,000, Mud 9000; IFP 71-234#, ISIP 1371#, FFP 253-503#, FSIP 1367#, IHP 2188#, FHP 2131#, BHT 126 Deg. F.

DST #4(Miss. Chert) 4738' - 4800' Test Times 15"-45"-45"-90" IFP Strong Blow Gas to Surface in 5 Min., FFP Gas to Surface throughout Stabilized Gas Gauge of 456 MCFGPD(15# on 0.75" choke); REC: 45' GCM(10%G, 90%M), no oil or water; IFP 93-110#, ISIP 1509#, FFP 72-75#, FSIP 1504#, IHP 2381#, FHP 2333#, BHT 123 Deg. F.

Comments

3/8/14 MIRU Sterling Drilling Rig #5 Spud at 6:30 PM; 3/9/14 TD. 608' - CTCH for setting Surface Casing; 3/10/14 Drilling at 1230'; 3/11/14 Drilling at 2750'; 3/12/14 Drilling at 4170'; 3/13/14 Drilling at 4390'; 3/14/14 TD. 4466' - TOH for DST #3; 3/15/14 Drilling at 4700'; 3/16/14 RTD. 4900' - CFS(Reached TD. at 6:30 AM.), LTD. 4900'; 3/17/14 RTD. 4900'/LTD. 4900' - LDDP to Set 5 1/2" Production Casing.

Set new 8 5/8"(23#) Surface Casing at 603' with 350 sacks of cement(Basic Energy Services). Cement did Circulate. PD. at 11:15 AM. on 3/9/14.

Set new 5 1/2"(15.5#) Production Casing at 4888' with 200 sacks of "Loeb Blend" cement(Basic Energy Services). PD. at 3:00 PM. on 3/17/14.

Surveys: 0.75 Deg. at 608'(Surface Casing); 0.25 Deg. at 4223'(DST #1); Deg. at 4425'(DST #2); 1.50 Deg. at 4800'(DST #4); 1.50 Deg. at 4900'(RTD).

Pipe Strap at 4223'(DST #1): Strap 0.01' Long to the Board, no correction made to the Board.

NOTE: Drilled with PDC Bit from under Surface Casing to 4223'. Drilled with "Button Bit" from 4223' - 4800'. Drilled from 4800' to Total Depth of 4900' with PDC Bit.

After review of the Halliburton logs, DST data and positive indications of commercially recoverable amounts of hydrocarbons, the operator elected to set new 5 1/2" Production Casing for completion in the Mississippi Chert and Kansas City 'I' zones.

LOG TOPS: Chase 2450(-230), Stotler Lmst. 3397(-1177), Queen Hill Shale 3907(-1687), Heebner Shale 4042(-1822), Toronto 4057(-1837), Brown Lmst. 4197(-1977), Lansing 'A' 4203(-1983), Lansing/KC 'H' 4362(-2142), K.C. 'I' 4412(-2192), K.C. 'J' 4452(-2232), Stark Shale 4498(-2278), Hertha 4556(-2336), Base Kansas City 4584(-2364), Pleasanton 4600(-2380), Marmaton 4627(-2407), Pawnee 4674(-2454), Cherokee Shale 4713(-2483), Reworked Miss. 4760(-2540), Miss. Chert 4772(-2552), Kinderhook Shale 4818(-2598), Kinderhook Sand 4847(-2627).

NOTE: Portions of this log were shifted 1' to 2' for correlation purposes with the Halliburton Logs.

ROCK TYPES

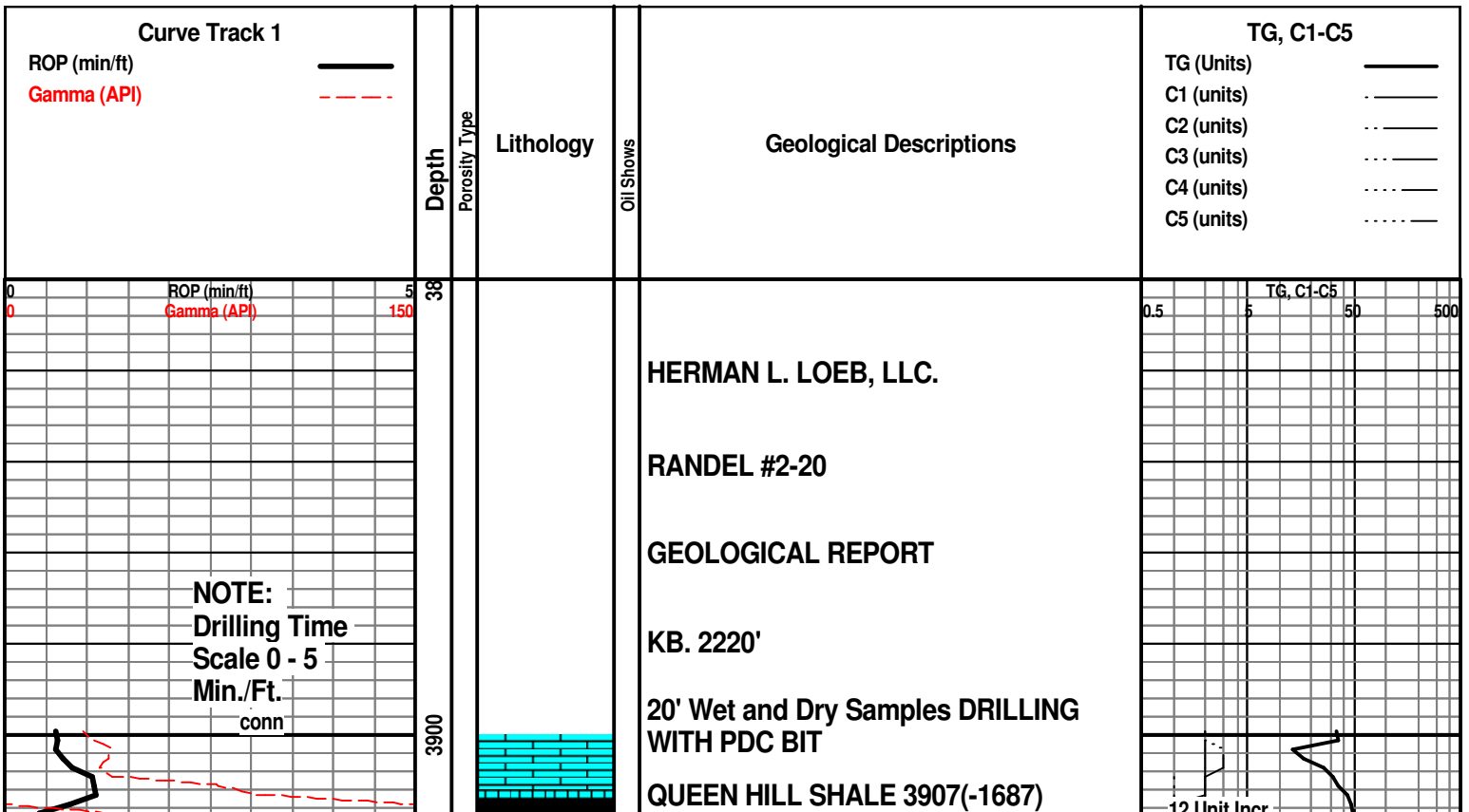
Anhy	Clyst	Gyp	Mrlst	Shgy
Bent	Coal	Igne	Salt	Sltst
Brec	Congl	Lmst	Shale	Ss
Cht	Dol	Meta	Shcol	Till

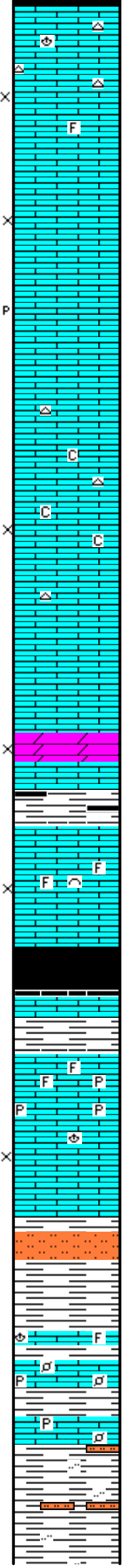
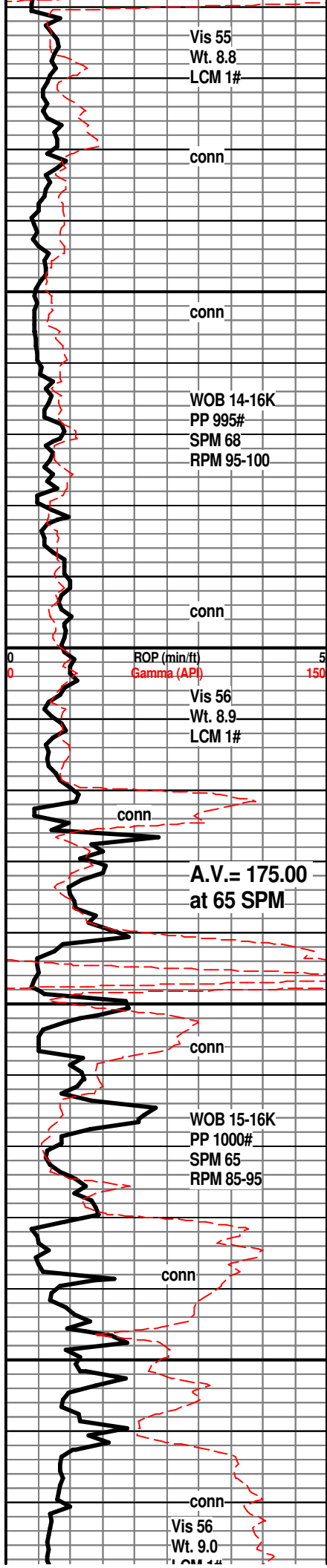
ACCESSORIES

MINERAL	Gyp	FOSSIL	Ostra	Sltstrg
Anhy	Hvymin	Algae	Pelec	Ssstrg
Arggrn	Kaol	Amph	Pellet	TEXTURE
Arg	Marl	Belm	Pisolite	Boundst
Bent	Minxl	Bioclst	Plant	Chalky
Bit	Nodule	Brach	Strom	Cryxln
Brecfrag	Phos	Bryozoa	STRINGER	Earthy
Calc	Pyr	Cephal	Anhy	Finexln
Carb	Salt	Coral	Arg	Grainst
Chtdk	Sandy	Crin	Bent	Lithogr
Chtlt	Silt	Echin	Coal	Microxln
Dol	Sil	Fish	Dol	Mudst
Feldspar	Sulphur	Foram	Gyp	Packst
Ferrpel	Tuff	Fossil	Ls	Wackst
Ferr		Gastro	Mrst	
Glau		Oolite		

OTHER SYMBOLS

POROSITY	Vuggy	ROUNDING	Spotted	EVENT
Earthy	SORTING	Rounded	Ques	Rft
Fenest	Well	Subrnd	Dead	Sidewall
Fracture	Moderate	Subang	INTERVAL	
Inter	Poor	Angular	Core	
Moldic		OIL SHOW	Dst	
Organic		Even		
Pinpoint				





SH; blk, carb ip, platy

LM; off wh, buff, f to med xln, fair vis interxln por, occ foss mat, rare lt gy/off wh cht, v. dull yel fluor, no vis stn, no odor, ns.

LM; tan to off wh, buff, f to med xln, fair interxln por, rare p-p por, dull yel to no fluor, no stn, ns.

LM; tan, buff, fxl to occ med xln, some gran text w/scat cse spar calc xtals, minor chalky mtz, scat off wh/lt gy cht, dull yel min fluor, ns.

DOL; lt brn, tan, sucrosic, fair to gd interxln por, lt yel min fluor, no vis stn, no gas kick, ns.

SH; med to dk gy, trc blk, platy

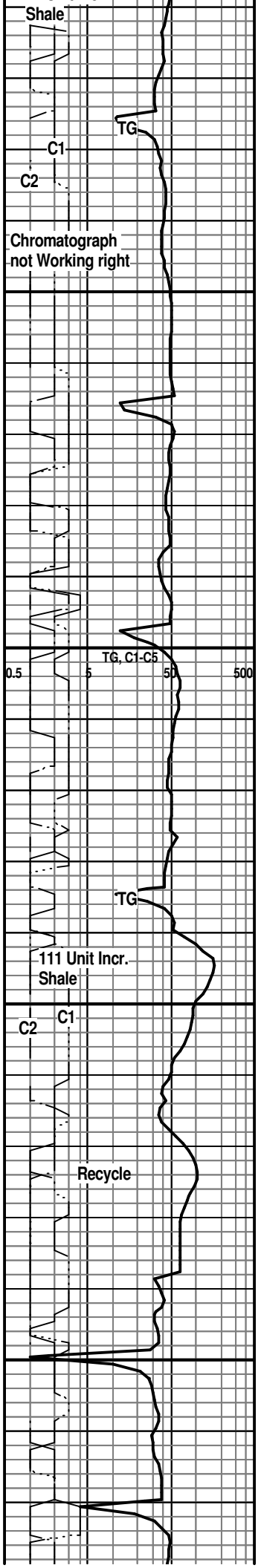
LM; off wh, tan, foss w/scat fair interpart por, minor off wh to lt gy cht, dull yel min fluor, no stn or odor, no gas kick, ns.

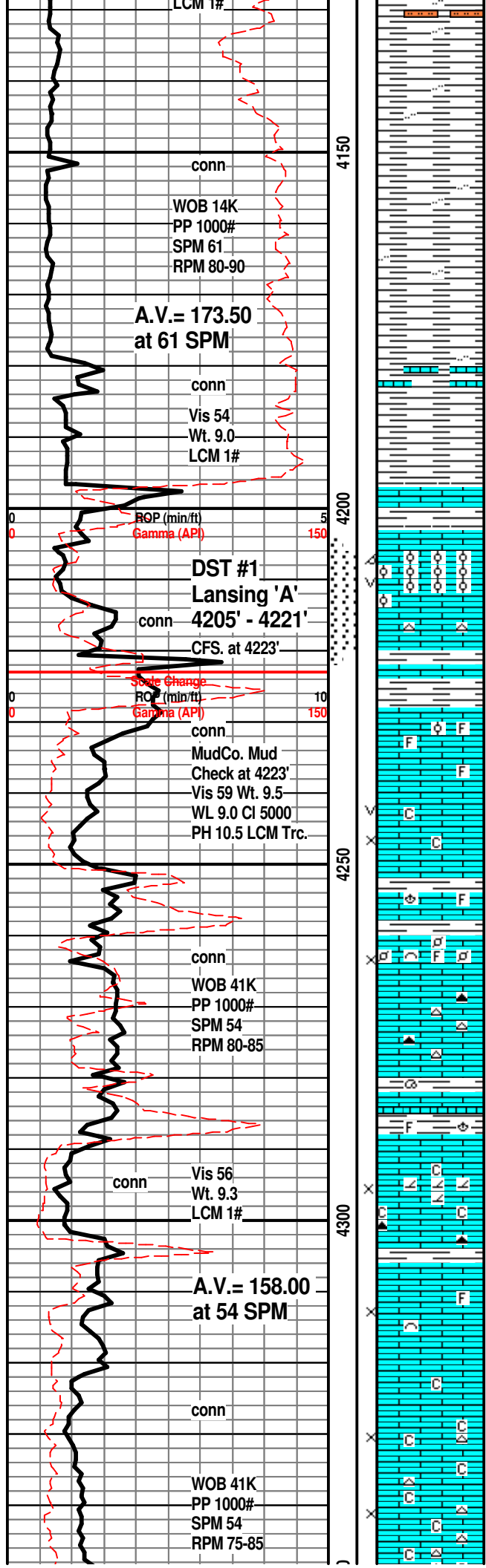
HEEBNER SHALE 4042(-1822)
SH; blk, carb ip, trc gas
LM; med to dk brn, hd, blocky

TORONTO 4057(-1837)
LM; off wh, lt gy, dense, foss ip - well cem, blocky, scat pyr, tite
LM; lt gy, wh, off wh, fxl w/scat sucrosic text dolomitic lmst, fair interxln por, dull yel fluor, no stn or odor, ns.

DOUGLAS SHALE 4080(-1860)
SH; lt gy, silty w/interbdd sltst, mica ip.

40 Stand Wiper Trip at 4090'
LM; med brn, foss ip, dense
LM; med gy, gy brn, blocky, foss ip w/scat pellets, pyr ip, no fluor, ns.
SH; lt to med gy, silty w/occ interbdd mica sltst.





SH; lt to med gy, smooth, platy, occ silty

SH; med gy, silty ip, platy, interbdd thin brn lmst strngs

BROWN LMST. 4197(-1977)

LANSING 'A' 4203(-1983)
LM; tan to lt brn, oolitic, med to occ lrg molds, gd oomoldic w/scat vug por, gas bubbles, spotted lt brn oil stn, med/brite yel fluor, fair to gd cut in some, fair to good odor

LM; tan to buff, fxln to dense, off wh cht, tite

DST #1: Lansing 'A' 4205' - 4221'
Corrected Depths to Log
LANSING 'B' 4228(-2008)

LM; tan to lt brn, foss ip, well cem, no vis por, no vis stn, ns.

10' Wet and Dry Samples at 4230'

LM; off wh, lt gy, fxln w/fair interxln and vug por, some rextalized, minor chalky mtx, dull yel fluor, no vis stn, no gas kick, ns.

LM; med to dk brn, hd, blocky, foss ip, tite

LM; tan to lt brn, buff, foss at top w/fair interpart por, no vis stn, no odor, no sample shows

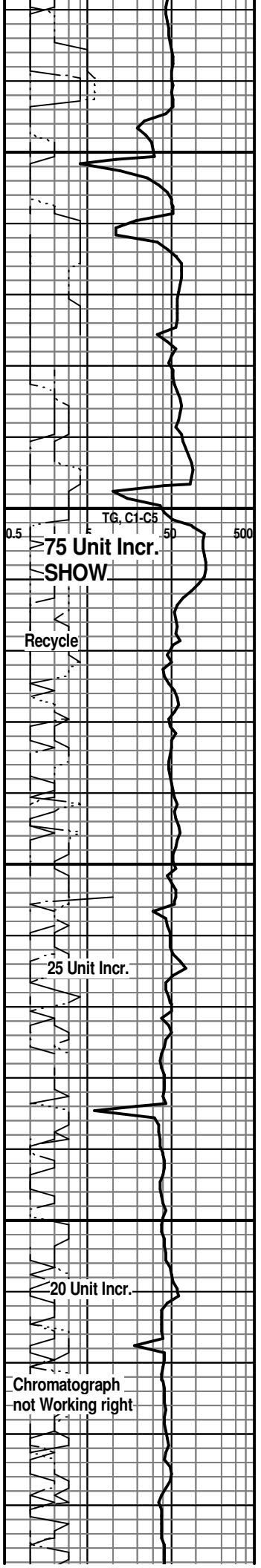
LM; lt brn, buff, hd, litho ip, tite, scat amber to lt gy cht, tite

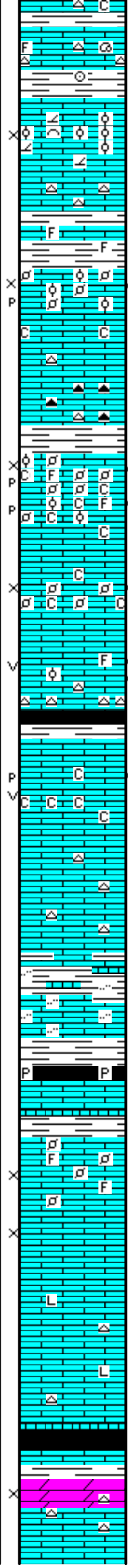
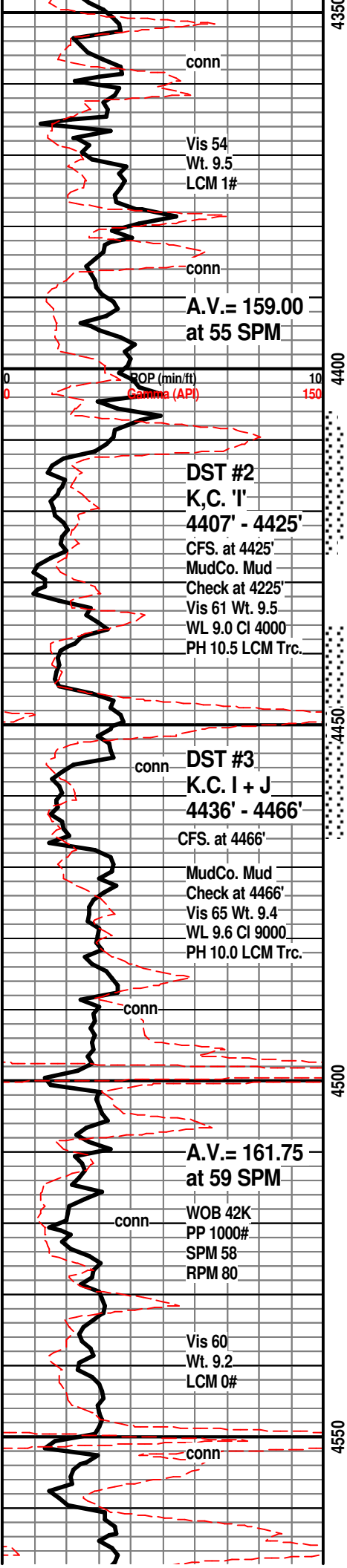
SH; dk gy grn, foss ip.

LM; tan to off wh, buff, fxln w/trc sucrosic text, partly dolomitic, fair interxln por, minor chalky mtx, occ dk brn/smoky cht, no fluor, no gas kick, ns.

LM; lt to med brn, foss ip, most dense, blocky, interbdd gran to med xln lmst w/fair interxln por, no fluor, no sample shows

LM; wh, off wh, f to med xln, chalky soft mtx, poor interxln por, dull yel min fluor, interbdd off wh to wh cht, no vis stn, no gas kick, ns.





LM; lt gy, lt brn, foss ip, dense, scat gy cht

LANSING/KC. 'H' 4362(-2142)
LM; tan to buff, foss ip w/rare ooids, sucrosic text, partly dolomitic, scat cse calc xtals, poor/no vis por, no fluor, ns.

LM; tan - lt brn, foss w/scat pellets/ooids, fair interpart w/rare p-p por, spotted lt brn oil stn in few pcs, fair odor, med yel fluor, some looks tite, fair cut, trc gas bubbles

LM; tan, lt brn, foss ip, most well cem, interbdd partly chalky soft mtx, abnt smoky to dk brn cht, no vis por, no fluor, ns.

KANSAS CITY 'I' 4412(-2192)
LM; lt brn, lt gy, highly foss - pelletal, lt brn spotted/even stn, gd to strong odor, brite yel fluor, SFO, fair p-p/interpart por, gas bubbles, chalky ip(chalk has fluor), some barren por

DST #2: K.C. 'I' zone 4407' - 4425'
LM; off wh, lt gy brn, foss - pelletal, fair to gd interpart por, minor chalky mtx, trc oil stn, poss. faint odor

LM; tan to cream, foss ip, some fairly well dev. vug por, spotted/even lt brn oil stn, med/brite yel fluor, SFO, few gas bubbles, fair odor, possible 200 Unit gas kick, gd cut, bcm cherty

KANSAS CITY 'J' 4452(-2232)
LM; tan to cream, buff, f to med xln, soft chalky mtx ip, few pcs. w/spotted lt brn stn, scat med to brite yel fluor, fair to gd odor, fair p-p and small vug por, fair cut

DST #3: K.C. 'I' + 'J' 4436' - 4466'
LM; lt brn, tan, flxn w/interbdd gy/off wh cht, no vis por, ns.

SH; med gy brn, lmy ip.

LM; med to dk brn, gritty - silty text, tite

STARK SHALE 4498(-2278)
SH; blk, platy, occ pyr

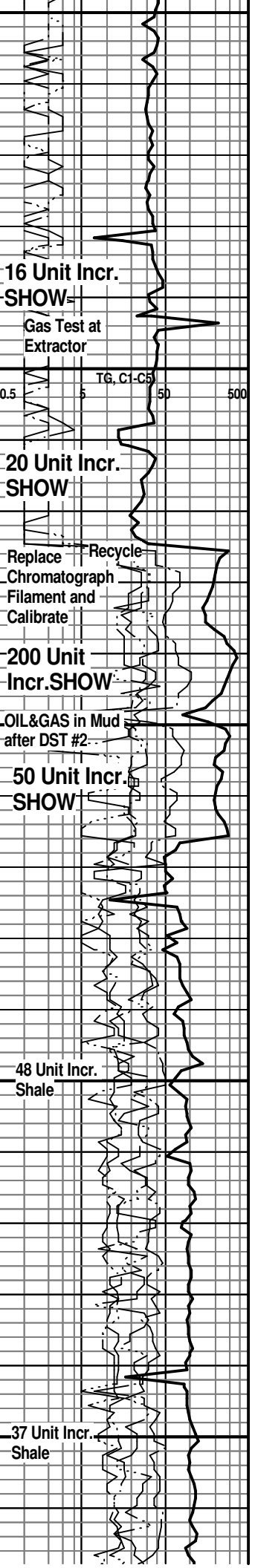
SWOPE 4508(-2288)
LM; tan to off wh, buff, foss ip w/scat foss hash, occ pellets, most well cem, trc poor interpart por, no fluor, ns.

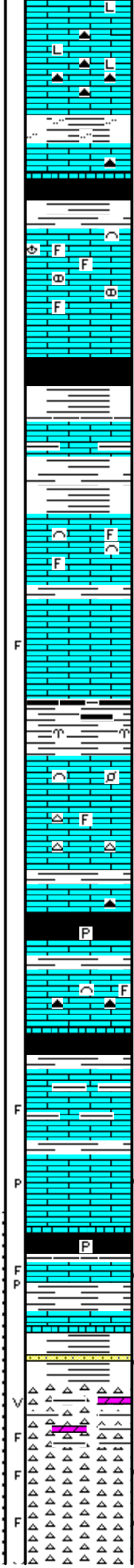
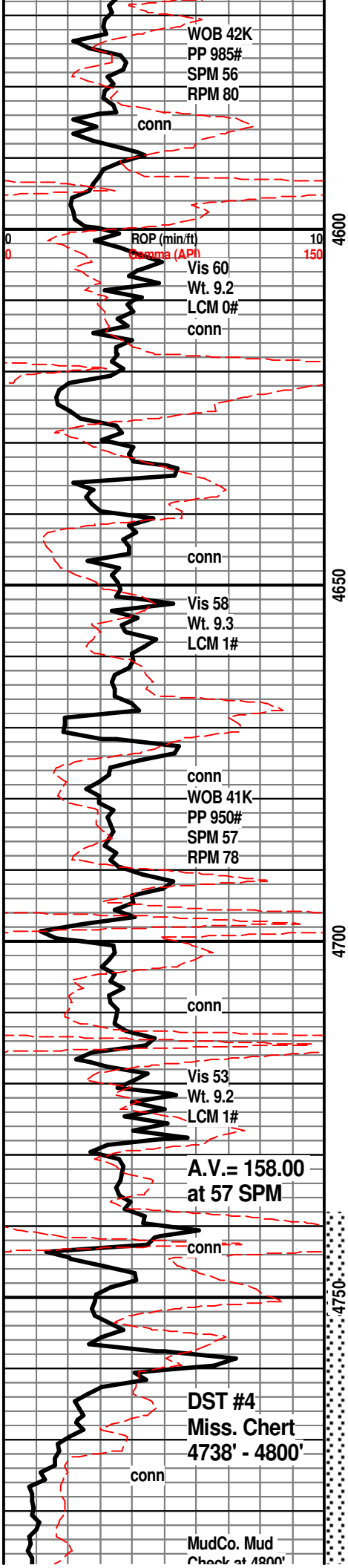
LM; tan to buff, f to med xln, scat spar calc, trc poor interxln por, lt yel min fluor, no vis stn, no odor, no gas kick

LM; lt to med brn, hd, blocky, most micritic, some litho, rare gy cht, tite

SH; blk, carb ip, platy

HERTHA 4556(-2336)
DOL; off wh, sucrosic, soft ip, fair interxln por, lt yel fluor, no stn or odor, interbdd off wh cht, ns.





LM; med to dk brn, hd, micritic, blocky, interbdd smoky/dk brn cht, some litho, tite

BASE KANSAS CITY 4584(-2364)

SH; med gy, grn, silty ip.

LM; med gy, gy brn, hd, scat blk cht

SH; varic, rust red, red brn, grn, dk gy - blk, platy

PLEASANTON 4600(-2380)

LM; tan to buff, occ off wh, foss ip, most dense - micritic, rare nodular lmst, no vis por, no fluor, ns.

SH; grn, gy grn, some blk, soft, platy

MARMATON 4627(-2407)

LM; lt gy, lt brn, rare pale grn tint, argil ip, most dense - blocky, tite

SH; grn, gy grn, med gy, trc rust red/red brn, platy

LM; tan to lt brn, some buff, fxln w/rare well cem foss mat, most dense - blocky, lt yel min fluor, no vis stn, no odor, ns.

LM; tan to lt brn, buff, fxln, few pcs w/blk tar/dead oil, trc frags, lt to med yel fluor, no live shows, no odor

SH; dk gy, blk, platy, occ foss

PAWNEE 4674(-2454)

LM; tan to lt brn, foss ip, well cem, most dense - micritic, no vis por, interbdd gy to lt brn cht, no fluor, no stn or odor, ns.

SH; blk, carb ip, trc pyr

SH; grn, gy grn, platy

LM; lt brn, foss ip, well cem, hd, no vis por, spotty lt yel min fluor, no stn or odor, ns.

CHEROKEE SHALE 4713(-2493)

SH; blk, carb ip, soft to blocky

LM; tan to lt brn, buff, some gy brn argil lmst interbdd, few pcs w/blk tar/gils, trc frags, no fluor, no odor, no live shows, most tite

LM; tan to lt brn, foss - fxln, scat foss hash, fair p-p por in some w/med brn spotted oil stn, some blk dead gils, no odor, trc gas bubbles, dull yel fluor, poor to fair cut

SH; blk, carb ip, occ pyr

LM; lt brn, foss ip, scat dk brn oil stn, poor p-p por, trc frags, lt yel fluor, no odor

LM; lt brn, fxln to micritic, blocky, hd, no vis por, no fluor, ns.

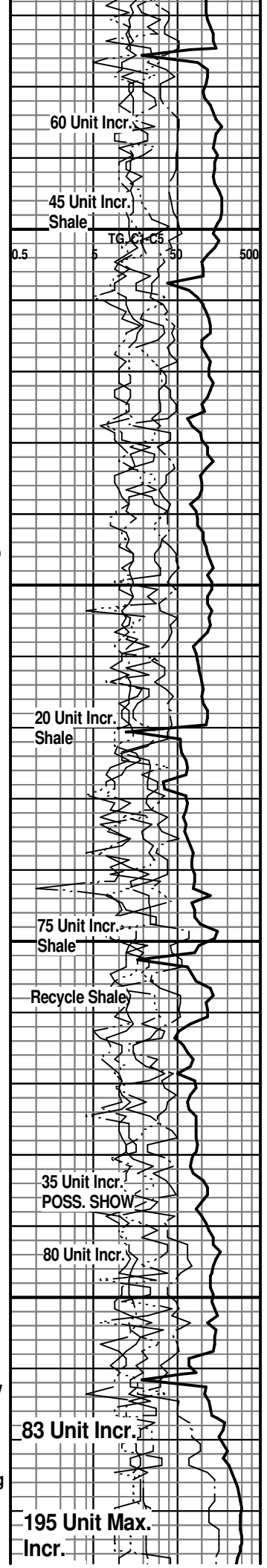
REWORKED MISS. 4760(-2540)

CHT; off wh, shaly w/interbdd grn shales and silty gritty reworked dolomitic cht, scat vug por in cht w/dk brn oil stn, no odor

CLEAN MISS. CHERT 4772(-2552)

CHT; wh, off wh, pred. trip cht at top, scat frags and vug por, med brn oil stn w/SFO, no odor, med yel fluor, grn shaly material w/ cht, dolo ip.

CHT; wh, most fresh, frags w/scat vug por, edge stn,



Check at 4800
Vis 58 Wt. 9.5+
WL 10.0 Cl 9000
PH 9.0 LCM 1#

CFS. at 4800'

Scale Change
ROP (min/ft)
Gamma (A)

conn
WOB 14K
PP 900#
SPM 56
RPM 80

conn

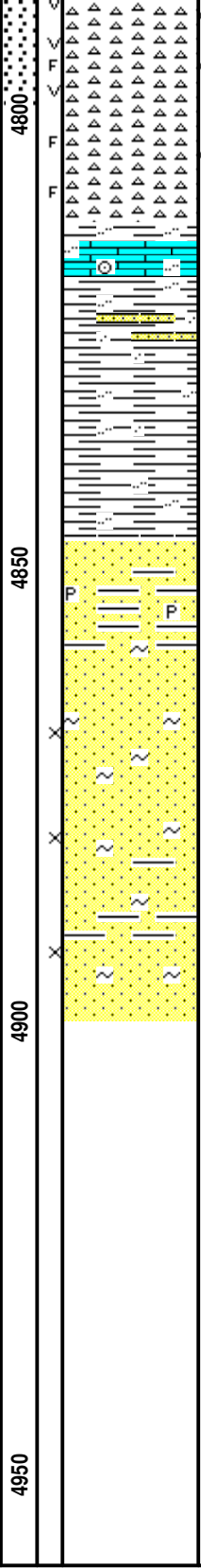
Vis 57
Wt. 9.2
LCM 2#

conn

WOB 14K
PP 900#
SPM 56
RPM 85

CFS. at 4900' RTD.

MudCo. Mud
Check at 4900'
Vis 63 Wt. 9.2
WL 8.8 Cl 4500
PH 11.0 LCM 2#



weathered edges w/live oil stn, no odor, med yel fluor, gas bubbles, tripolite w/SSFO

CHT; wh, off wh, most fresh w/weathered edges, frags w/edge stn, occ vug por, scat brite yel fluor, trc FO, v. faint gas odor

DST #4: Miss. Chert 4738' - 4800'

CHT; off wh, fresh, less stn, frags, faint gas odor

**KINDERHOOK SHALE 4818(-2598)
BACK TO 20' SAMPLES**

SH; med gy, gy grn, silty to occ sandy, interbdd vf gr ss strngs.

SH; med gy, gy grn, silty to occ sandy

KINDERHOOK SAND 4847(-2627)

SS; lt gy, grn, some v. hd - qtzitic ip, most tite, rare pyr

SS; wh, grn, vf to f gr qtz, clusters, some w/gd intergran por, scat grn glau/chlorite incl, no fluor, no stn or odor, ns.

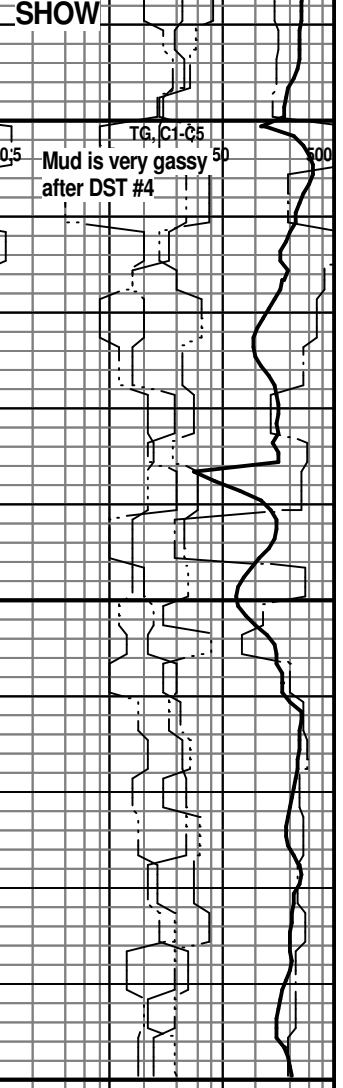
SS; wh, off wh, lt gy, grn, pred f gr qtz, clusters, scat glau/chlorite, fair to gd intergran por, subrnd to subang gr, no fluor, some argil ss, ns.

RTD. 4900' at 6:30 AM. 3/16/14

LTD. 4900'

Halliburton ACRT, NEU/DEN, Microlog, Dipole Sonic, MRIL

NOTE: Portions of this log were shifted by 1' to 2' for correlation purposes with the Halliburton Logs.





TRILOBITE TESTING, INC.

DRILL STEM TEST REPORT

Herman L. Loeb LLC
 P.O.Box 838
 Lawrenceville Ill. 62439
 ATTN: Jon Christensen

20-27s-18w Kiowa Ks.
Randel#2-20
 Job Ticket: 51885 **DST#: 1**
 Test Start: 2014.03.12 @ 12:09:39

GENERAL INFORMATION:

Formation: **Lans. A**
 Deviated: No Whipstock: ft (KB)
 Time Tool Opened: 13:57:09
 Time Test Ended: 19:24:24
 Interval: **4207.00 ft (KB) To 4223.00 ft (KB) (TVD)**
 Total Depth: 4223.00 ft (KB) (TVD)
 Hole Diameter: 7.88 inches Hole Condition: Fair
 Test Type: Conventional Bottom Hole (Initial)
 Tester: Gary Pevoteaux
 Unit No: 56
 Reference Elevations: 2218.00 ft (KB)
 2205.00 ft (CF)
 KB to GR/CF: 13.00 ft

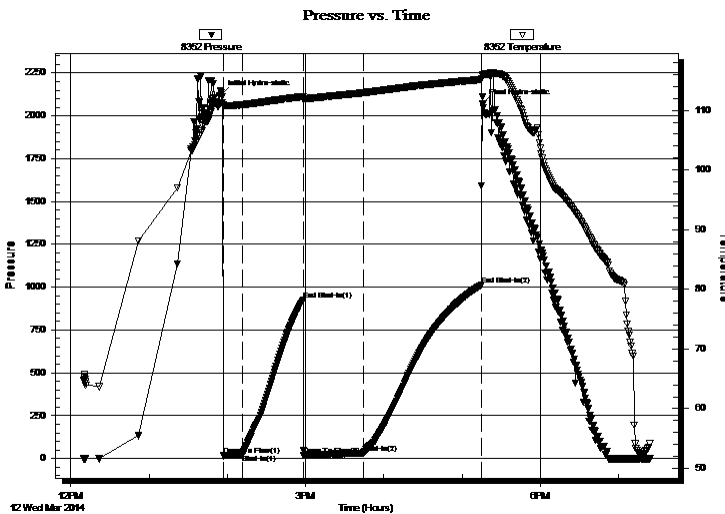
Serial #: 8352

Inside

Press @ Run Depth: 31.16 psig @ 4208.00 ft (KB) Capacity: 8000.00 psig
 Start Date: 2014.03.12 End Date: 2014.03.12 Last Calib.: 2014.03.12
 Start Time: 12:09:44 End Time: 19:24:23 Time On Btm: 2014.03.12 @ 13:55:39
 Time Off Btm: 2014.03.12 @ 17:15:54

TEST COMMENT: IF: Strong blow . B.O.B. in 9 mins.
 IS: No blow .
 FF: Fair to strong blow . B.O.B. in 22 mins.
 FS: No blow .

PRESSURE SUMMARY



Time (Min.)	Pressure (psig)	Temp (deg F)	Annotation
0	2125.33	111.26	Initial Hydro-static
2	16.61	110.85	Open To Flow (1)
16	22.08	110.92	Shut-In(1)
63	923.90	112.31	End Shut-In(1)
63	17.29	112.00	Open To Flow (2)
109	31.16	112.95	Shut-In(2)
199	1011.24	115.15	End Shut-In(2)
201	2070.00	115.95	Final Hydro-static

Recovery

Length (ft)	Description	Volume (bbl)
30.00	SOCM 2%o 98%m	0.15
0.00	450 ft.of GIP	0.00

Gas Rates

Choke (inches)	Pressure (psig)	Gas Rate (Mcf/d)



**TRILOBITE
TESTING, INC.**

DRILL STEM TEST REPORT

FLUID SUMMARY

Herman L. Loeb LLC

20-27s-18w Kiowa Ks.

P.O.Box 838
Lawrenceville Ill. 62439

Randel#2-20

Job Ticket: 51885

DST#: 1

ATTN: Jon Christensen

Test Start: 2014.03.12 @ 12:09:39

Mud and Cushion Information

Mud Type: Gel Chem

Cushion Type:

Oil API:

deg API

Mud Weight: 10.00 lb/gal

Cushion Length:

ft

Water Salinity:

5000 ppm

Viscosity: 59.00 sec/qt

Cushion Volume:

bbbl

Water Loss: 8.99 in³

Gas Cushion Type:

Resistivity: 0.00 ohm.m

Gas Cushion Pressure:

psig

Salinity: 5000.00 ppm

Filter Cake: 0.20 inches

Recovery Information

Recovery Table

Length ft	Description	Volume bbbl
30.00	SOCM 2%o 98%m	0.148
0.00	450 ft.of GIP	0.000

Total Length: 30.00 ft Total Volume: 0.148 bbl

Num Fluid Samples: 0

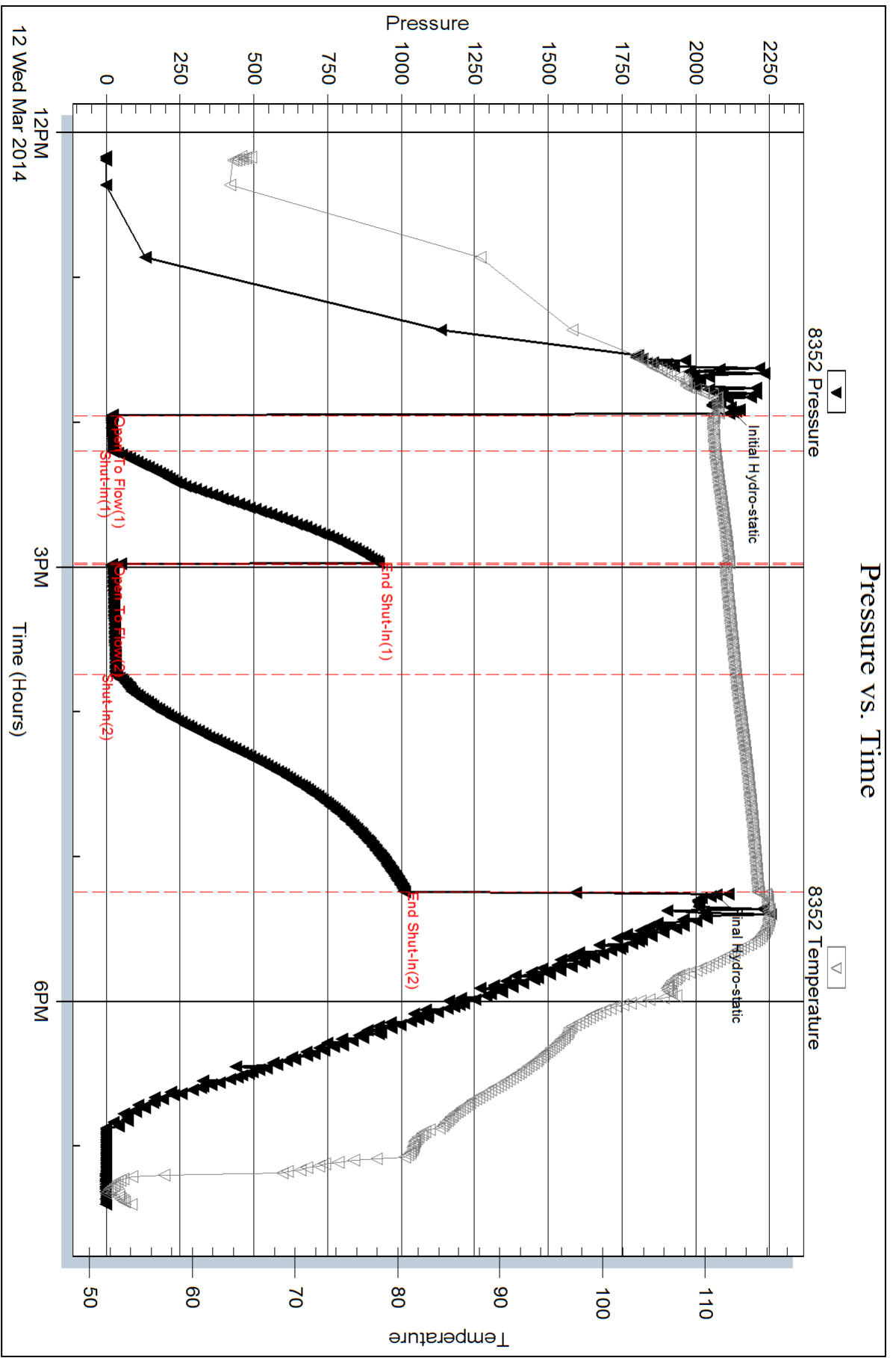
Num Gas Bombs: 0

Serial #: none

Laboratory Name:

Laboratory Location:

Recovery Comments:





TRILOBITE TESTING, INC.

DRILL STEM TEST REPORT

Herman L. Loeb LLC
 P.O.Box 838
 Lawrenceville Ill. 62439
 ATTN: Jon Christensen

20-27s-18w Kiowa Ks.
Randel#2-20
 Job Ticket: 51886 **DST#: 2**
 Test Start: 2014.03.13 @ 13:55:56

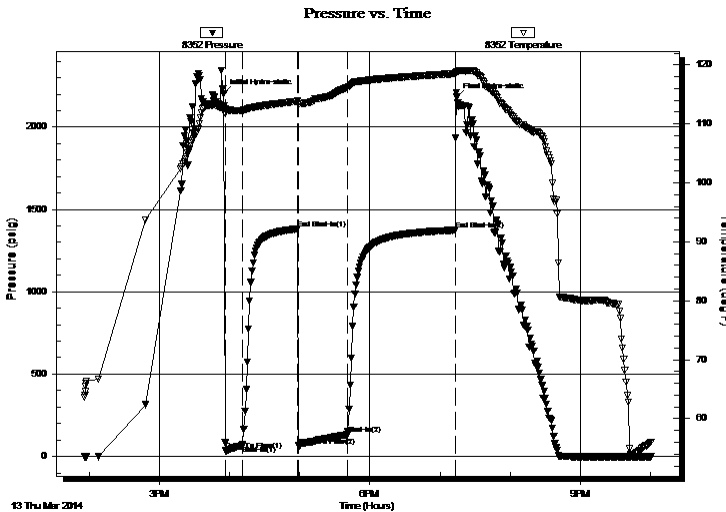
GENERAL INFORMATION:

Formation: **Lans. KC I**
 Deviated: No Whipstock: ft (KB)
 Test Type: Conventional Bottom Hole (Reset)
 Time Tool Opened: 15:56:41 Tester: Gary Pevoteaux
 Time Test Ended: 22:00:41 Unit No: 56
 Interval: **4407.00 ft (KB) To 4425.00 ft (KB) (TVD)** Reference Elevations: 2218.00 ft (KB)
 Total Depth: 4425.00 ft (KB) (TVD) 2205.00 ft (CF)
 Hole Diameter: 7.88 inches Hole Condition: Fair KB to GR/CF: 13.00 ft

Serial #: 8352 Inside
 Press @ Run Depth: 132.41 psig @ 4408.00 ft (KB) Capacity: 8000.00 psig
 Start Date: 2014.03.13 End Date: 2014.03.13 Last Calib.: 2014.03.13
 Start Time: 13:56:01 End Time: 22:00:40 Time On Btm: 2014.03.13 @ 15:55:11
 Time Off Btm: 2014.03.13 @ 19:14:26

TEST COMMENT: IF: Strong blow . B.O.B. in 90 secs.
 IS: Weak blow . 1 - 4 1/2".
 FF: Strong blow . B.O.B. in 45 secs. GTS in 19 mins. (TSTM)
 FS: Fair blow . 1 - 6".

PRESSURE SUMMARY



Time (Min.)	Pressure (psig)	Temp (deg F)	Annotation
0	2201.97	113.00	Initial Hydro-static
2	35.28	112.48	Open To Flow (1)
16	65.12	112.25	Shut-In(1)
63	1381.20	113.84	End Shut-In(1)
64	63.57	113.47	Open To Flow (2)
106	132.41	116.19	Shut-In(2)
198	1373.93	118.52	End Shut-In(2)
200	2181.34	118.80	Final Hydro-static

Recovery

Length (ft)	Description	Volume (bbl)
60.00	SOCW 3%o 97%w /Rw .18@63deg	0.30
230.00	GW&MCO 55%g 12%w 8%m 25%o	1.13
65.00	CGO 45%g 55%o	0.64

* Recovery from multiple tests

Gas Rates

Choke (inches)	Pressure (psig)	Gas Rate (Mcf/d)



**TRILOBITE
TESTING, INC.**

DRILL STEM TEST REPORT

FLUID SUMMARY

Herman L. Loeb LLC

20-27s-18w Kiowa Ks.

P.O.Box 838
Lawrenceville Ill. 62439

Randel#2-20

Job Ticket: 51886

DST#: 2

ATTN: Jon Christensen

Test Start: 2014.03.13 @ 13:55:56

Mud and Cushion Information

Mud Type: Gel Chem

Cushion Type:

Oil API:

40.4 deg API

Mud Weight: 10.00 lb/gal

Cushion Length:

ft

Water Salinity:

48000 ppm

Viscosity: 59.00 sec/qt

Cushion Volume:

bbbl

Water Loss: 8.98 in³

Gas Cushion Type:

Resistivity: 0.00 ohm.m

Gas Cushion Pressure:

psig

Salinity: 5000.00 ppm

Filter Cake: 0.20 inches

Recovery Information

Recovery Table

Length ft	Description	Volume bbbl
60.00	SOCW 3%o 97%w /Rw .18@63deg	0.295
230.00	GW&MCO 55%g 12%w 8%m 25%o	1.131
65.00	CGO 45%g 55%o	0.638

Total Length: 355.00 ft

Total Volume: 2.064 bbl

Num Fluid Samples: 0

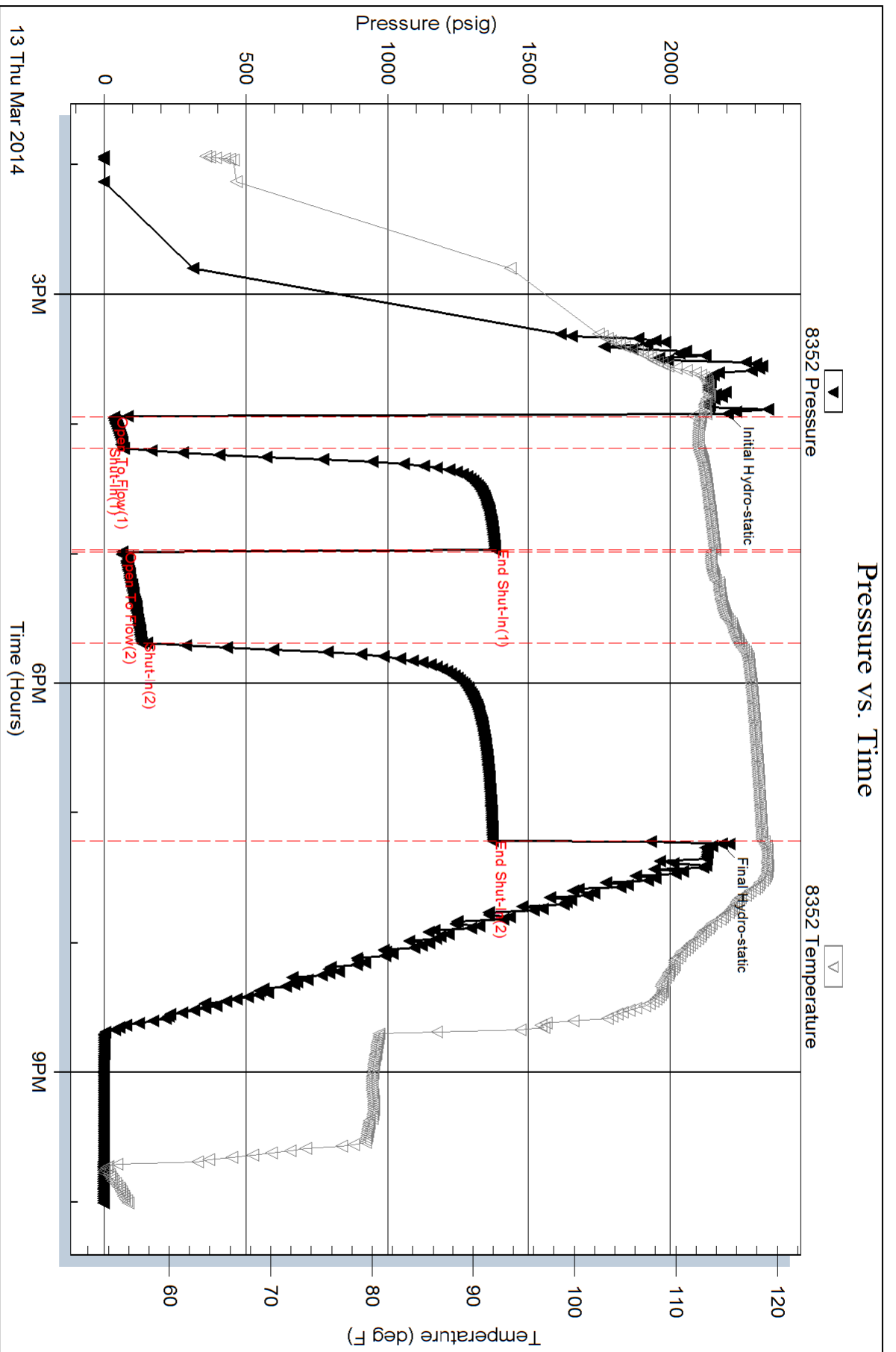
Num Gas Bombs: 0

Serial #: none

Laboratory Name:

Laboratory Location:

Recovery Comments:





TRILOBITE TESTING, INC

DRILL STEM TEST REPORT

Herman L. Loeb LLC
 P.O.Box 838
 Lawrenceville Ill. 62439
 ATTN: Jon Christensen

20-27s-18w Kiowa Ks.
Randel#2-20
 Job Ticket: 51887 **DST#: 3**
 Test Start: 2014.03.14 @ 07:55:22

GENERAL INFORMATION:

Formation: **K.C. I&J**
 Deviated: No Whipstock: ft (KB)
 Time Tool Opened: 09:34:22
 Time Test Ended: 15:42:07
 Interval: **4436.00 ft (KB) To 4466.00 ft (KB) (TVD)**
 Total Depth: 4466.00 ft (KB) (TVD)
 Hole Diameter: 7.88 inches Hole Condition: Fair
 Test Type: Conventional Bottom Hole (Reset)
 Tester: Gary Pevoteaux
 Unit No: 56
 Reference Elevations: 2218.00 ft (KB)
 2205.00 ft (CF)
 KB to GR/CF: 13.00 ft

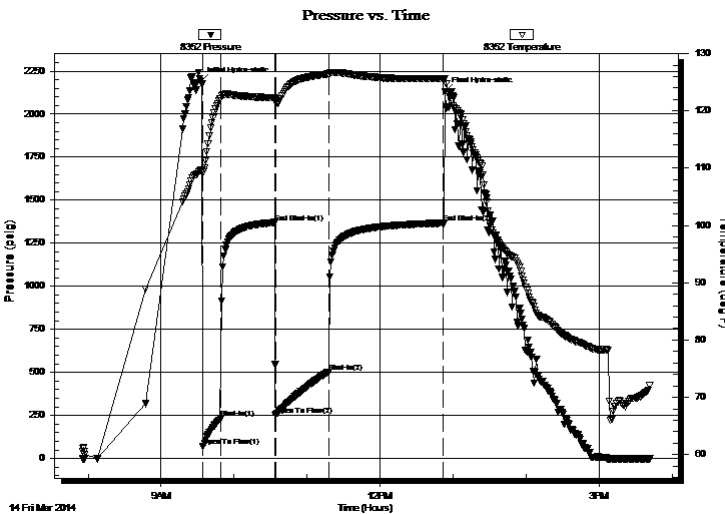
Serial #: 8352

Inside

Press@RunDepth: 503.25 psig @ 4437.00 ft (KB) Capacity: 8000.00 psig
 Start Date: 2014.03.14 End Date: 2014.03.14 Last Calib.: 2014.03.14
 Start Time: 07:55:27 End Time: 15:42:06 Time On Btm: 2014.03.14 @ 09:32:52
 Time Off Btm: 2014.03.14 @ 12:53:37

TEST COMMENT: IF: Strong blow . B.O.B. in 2 mins.
 IS: Fair blow . Increase to 12".
 FF: Strong blow . B.O.B. in 4 mins.
 FS: Fair to strong blow . B.O.B.

PRESSURE SUMMARY



Time (Min.)	Pressure (psig)	Temp (deg F)	Annotation
0	2188.37	109.65	Initial Hydro-static
2	70.67	109.26	Open To Flow (1)
16	233.65	122.12	Shut-In(1)
61	1370.84	122.31	End Shut-In(1)
61	252.73	122.00	Open To Flow (2)
105	503.25	126.43	Shut-In(2)
200	1367.45	125.59	End Shut-In(2)
201	2130.98	125.59	Final Hydro-static

Recovery

Length (ft)	Description	Volume (bbl)
840.00	GCW 6%g 94%w /Rw .07@ 73deg	8.87
150.00	GOCMW 30%g 18%o 25%m 27%w	2.10
0.00	930 ft.of GIP	0.00

* Recovery from multiple tests

Gas Rates

Choke (inches)	Pressure (psig)	Gas Rate (Mcf/d)



**TRILOBITE
TESTING, INC**

DRILL STEM TEST REPORT

FLUID SUMMARY

Herman L. Loeb LLC

20-27s-18w Kiowa Ks.

P.O.Box 838
Lawrenceville Ill. 62439

Randel#2-20

Job Ticket: 51887

DST#: 3

ATTN: Jon Christensen

Test Start: 2014.03.14 @ 07:55:22

Mud and Cushion Information

Mud Type: Gel Chem

Cushion Type:

Oil API:

deg API

Mud Weight: 9.00 lb/gal

Cushion Length:

ft

Water Salinity:

113000 ppm

Viscosity: 65.00 sec/qt

Cushion Volume:

bbf

Water Loss: 9.59 in³

Gas Cushion Type:

Resistivity: 0.00 ohm.m

Gas Cushion Pressure:

psig

Salinity: 9000.00 ppm

Filter Cake: 0.20 inches

Recovery Information

Recovery Table

Length ft	Description	Volume bbf
840.00	GCW 6%g 94%w /Rw .07@ 73deg	8.868
150.00	GOCMW 30%g 18%o 25%m 27%w	2.104
0.00	930 ft.of GIP	0.000

Total Length: 990.00 ft

Total Volume: 10.972 bbl

Num Fluid Samples: 0

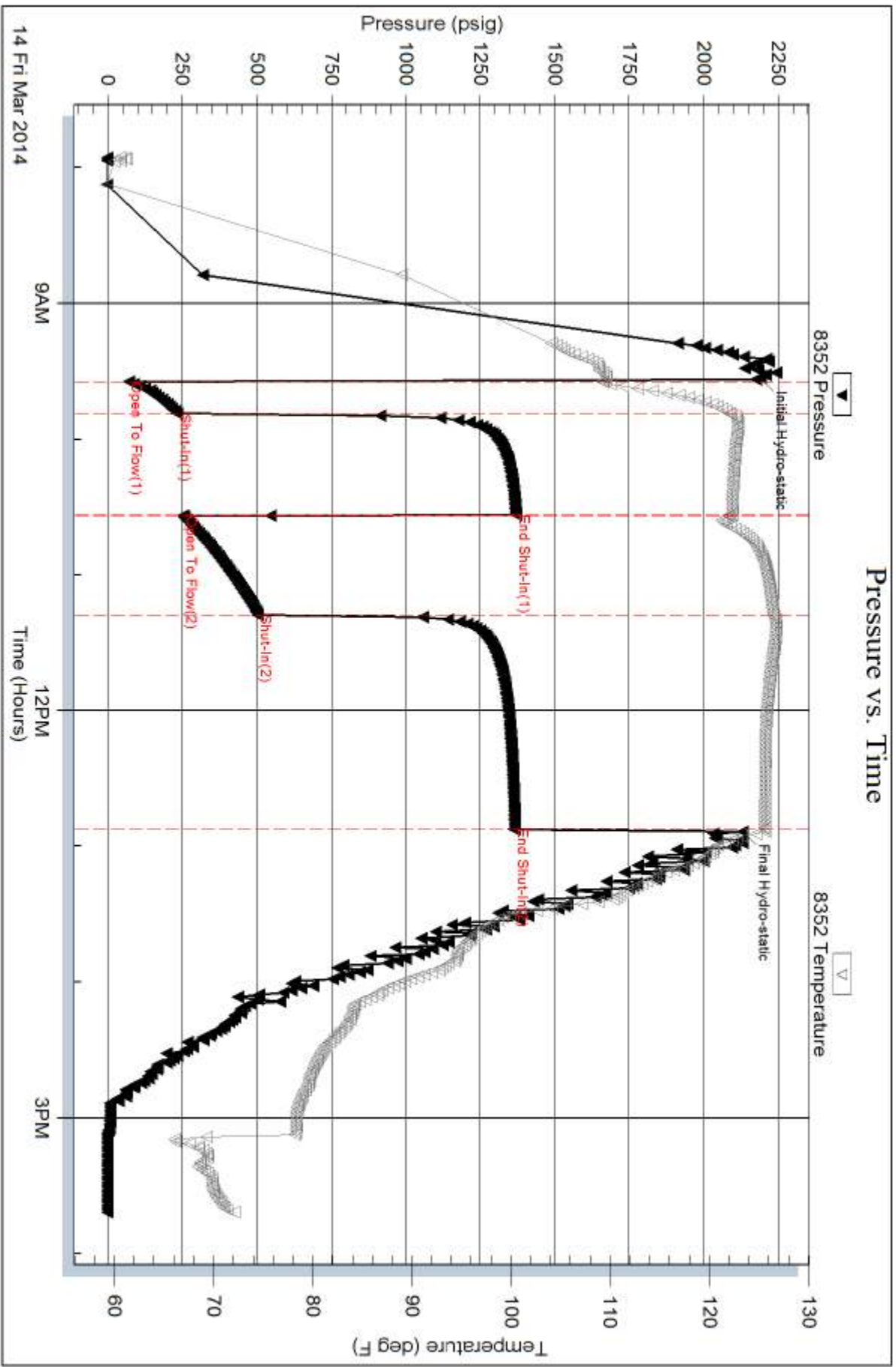
Num Gas Bombs: 0

Serial #: none

Laboratory Name:

Laboratory Location:

Recovery Comments:





**TRILOBITE
TESTING, INC.**

DRILL STEM TEST REPORT

Herman L. Loeb LLC
P.O.Box 838
Lawrenceville Ill. 62439
ATTN: Jon Christensen

20-27s-18w Kiowa Ks.

Randel#2-20

Job Ticket: 51888

DST#: 4

Test Start: 2014.03.15 @ 18:05:46

GENERAL INFORMATION:

Formation: **Miss.**
Deviated: No Whipstock: ft (KB)
Time Tool Opened: 20:29:01
Time Test Ended: 01:56:31
Interval: **4738.00 ft (KB) To 4800.00 ft (KB) (TVD)**
Total Depth: 4800.00 ft (KB) (TVD)
Hole Diameter: 7.88 inches Hole Condition: Fair
Test Type: Conventional Bottom Hole (Reset)
Tester: Gary Pevoteaux
Unit No: 56
Reference Elevations: 2218.00 ft (KB)
2205.00 ft (CF)
KB to GR/CF: 13.00 ft

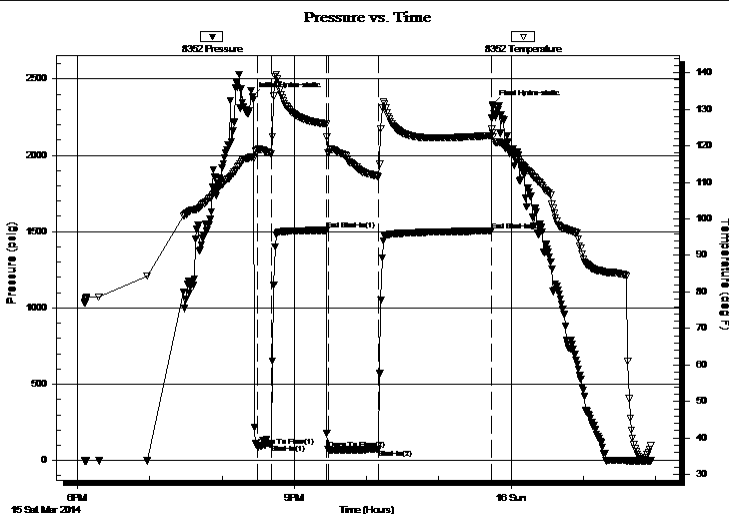
Serial #: 8352

Inside

Press @ Run Depth: 75.03 psig @ 4739.00 ft (KB)
Start Date: 2014.03.15 End Date: 2014.03.16
Start Time: 18:05:51 End Time: 01:56:30
Capacity: 8000.00 psig
Last Calib.: 2014.03.16
Time On Btm: 2014.03.15 @ 20:25:01
Time Off Btm: 2014.03.15 @ 23:44:46

TEST COMMENT: IF: Strong blow . GTS in 5 mins. (see gas flow report)
IS: Fair blow . 6 - 8".
FF: Strong blow . (see gas flow report)
FS: Strong blow . B.O.B.

PRESSURE SUMMARY



Time (Min.)	Pressure (psig)	Temp (deg F)	Annotation
0	2381.07	116.95	Initial Hydro-static
4	92.94	118.91	Open To Flow (1)
17	109.82	117.77	Shut-In(1)
62	1508.53	125.99	End Shut-In(1)
64	71.91	117.86	Open To Flow (2)
106	75.03	111.42	Shut-In(2)
199	1504.40	122.85	End Shut-In(2)
200	2333.13	123.48	Final Hydro-static

Recovery

Length (ft)	Description	Volume (bbl)
45.00	GCM 10%g 90%m	0.22

Gas Rates

	Choke (inches)	Pressure (psig)	Gas Rate (Mcf/d)
First Gas Rate	0.50	45.00	399.35
Last Gas Rate	0.75	15.00	456.10
Max. Gas Rate	0.50	45.00	399.35

* Recovery from multiple tests



**TRILOBITE
TESTING, INC.**

DRILL STEM TEST REPORT

FLUID SUMMARY

Herman L. Loeb LLC

20-27s-18w Kiowa Ks.

P.O.Box 838
Lawrenceville Ill. 62439

Randel#2-20

Job Ticket: 51888

DST#: 4

ATTN: Jon Christensen

Test Start: 2014.03.15 @ 18:05:46

Mud and Cushion Information

Mud Type: Gel Chem

Cushion Type:

Oil API:

deg API

Mud Weight: 10.00 lb/gal

Cushion Length:

ft

Water Salinity:

9000 ppm

Viscosity: 58.00 sec/qt

Cushion Volume:

bbbl

Water Loss: 9.99 in³

Gas Cushion Type:

Resistivity: 0.00 ohm.m

Gas Cushion Pressure:

psig

Salinity: 9000.00 ppm

Filter Cake: 0.20 inches

Recovery Information

Recovery Table

Length ft	Description	Volume bbl
45.00	GCM 10%g 90%m	0.221

Total Length: 45.00 ft

Total Volume: 0.221 bbl

Num Fluid Samples: 0

Num Gas Bombs: 1

Serial #: gp-4

Laboratory Name: Caraway

Laboratory Location: Liberal, KS

Recovery Comments:



**TRILOBITE
TESTING, INC.**

DRILL STEM TEST REPORT

GAS RATES

Herman L. Loeb LLC

20-27s-18w Kiowa Ks.

P.O.Box 838
Lawrenceville Ill. 62439

Randel#2-20

Job Ticket: 51888

DST#: 4

ATTN: Jon Christensen

Test Start: 2014.03.15 @ 18:05:46

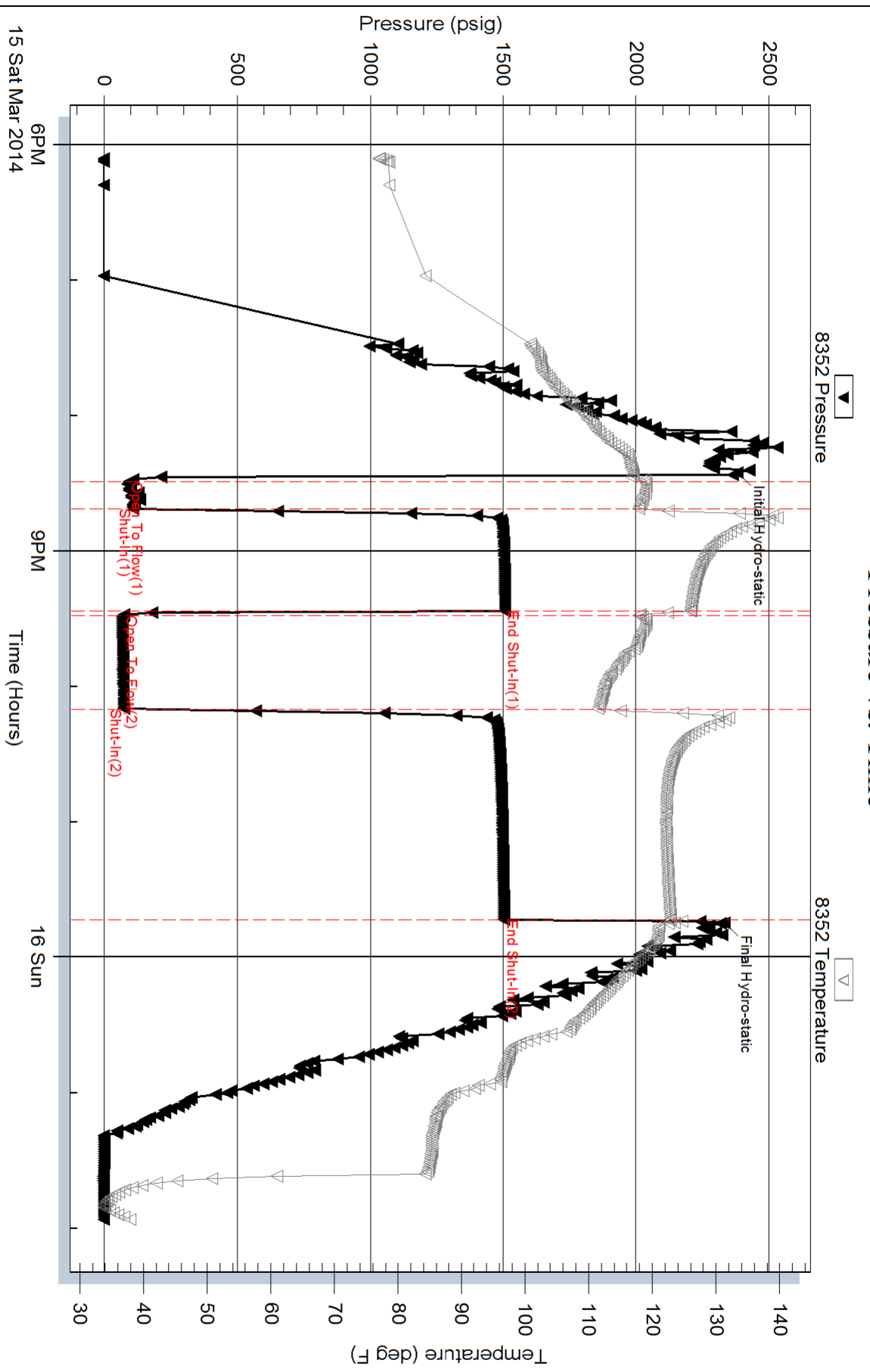
Gas Rates Information

Temperature: 59 (deg F)
Relative Density: 0.65
Z Factor: 0.8

Gas Rates Table

Flow Period	Elapsed Time	Choke (inches)	Pressure (psig)	Gas Rate (Mcf/d)
1	15	0.50	45.00	399.35
2	10	0.75	15.00	456.10
2	20	0.75	15.00	456.10
2	30	0.75	15.00	456.10
2	45	0.75	15.00	456.10

Pressure vs. Time





076
197 Randel
6439

PAGE 1 of 1	CURT NO 1007589	INVOICE DATE 03/11/2014
INVOICE NUMBER 1718 - 91434585		

Pratt (620) 672-1201

B HERMAN L LOEB LLC
 I PO Box: 838
 L LAWRENCEVILLE
 L IL US 62439
 T
 O **ATTN:** ACCOUNTS PAYABLE

J **LEASE NAME** Randel 2-20
 O **LOCATION**
 B **COUNTY** Kiowa
 S **STATE** KS
 I **JOB DESCRIPTION** Cement-New Well Casing/Pi
 T **JOB CONTACT**
 E

JOB #	EQUIPMENT #	PURCHASE ORDER NO.	TERMS	DUE DATE
40700386	20920		Net - 30 days	04/10/2014

	QTY	U of M	UNIT PRICE	INVOICE AMOUNT
For Service Dates: 03/09/2014 to 03/09/2014				
0040700386				
171809807A Cement-New Well Casing/Pi 03/09/2014 Cement 8 5/8" Surface				
A-Con Blend Common	175.00	EA	12.96	2,268.00 T
Common Cement	175.00	EA	11.52	2,016.00 T
Celloflake	88.00	EA	2.66	234.43 T
Calcium Chloride	825.00	EA	0.76	623.70 T
"Top Rubber Cmt Plug, 8 5/8""	1.00	EA	162.00	162.00
"8 5/8"" Guide Shoe (Red)"	1.00	EA	396.00	396.00
Flapper Type Insert Float Valves. 8 5/8"	1.00	EA	201.60	201.60
"Unit Mileage Chg (PU, cars one way)"	40.00	MI	3.06	122.40
Heavy Equipment Mileage	80.00	MI	5.04	403.20
"Proppant & Bulk Del. Chgs., per ton mil	660.00	EA	1.58	1,045.44
Depth Charge; 501'-1000'	1.00	EA	864.00	864.00
Blending & Mixing Service Charge	350.00	BAG	1.01	352.80
Plug Container Util. Chg.	1.00	EA	180.00	180.00
"Service Supervisor, first 8 hrs on loc.	1.00	EA	126.00	126.00

PAID
 4/21/14
 MAR 20 2014
SCANNED

PLEASE REMIT TO:	SEND OTHER CORRESPONDENCE TO:	SUB TOTAL	8,995.57
BASIC ENERGY SERVICES, LP	BASIC ENERGY SERVICES, LP	TAX	367.66
PO BOX 841903	801 CHERRY ST, STE 2100	INVOICE TOTAL	9,363.23
DALLAS, TX 75284-1903	FORT WORTH, TX 76102		



BASICSM
ENERGY SERVICES
PRESSURE PUMPING & WIRELINE

10244 NE Hwy. 61
P.O. Box 8613
Pratt, Kansas 67124
Phone 620-672-1201

FIELD SERVICE TICKET

1718 09807 A

DATE _____ TICKET NO. _____

DATE OF JOB: 3-9-14	DISTRICT: Pratt	NEW WELL <input checked="" type="checkbox"/>	OLD WELL <input type="checkbox"/>	PROD <input type="checkbox"/>	INJ <input type="checkbox"/>	WDW <input type="checkbox"/>	CUSTOMER ORDER NO.:			
CUSTOMER: Heiman L Lueb LLC		LEASE: RANDI					WELL NO.: 2-2			
ADDRESS:		COUNTY: Kiowa			STATE: KS					
CITY: STATE:		SERVICE CREW: MATTI KUMMEL EGGINS								
AUTHORIZED BY:		JOB TYPE: CRW SURFACE								
EQUIPMENT#	HRS	EQUIPMENT#	HRS	EQUIPMENT#	HRS	TRUCK CALLED	DATE	AM	PM	TIME
37586	.5						3-9-14			5:15
						ARRIVED AT JOB				7:30
27703		33708/20920	.5			START OPERATION				10:35
						FINISH OPERATION				11:12
19919/73768	.5					RELEASED				12:00
						MILES FROM STATION TO WELL				40

CONTRACT CONDITIONS: (This contract must be signed before the job is commenced or merchandise is delivered).

The undersigned is authorized to execute this contract as an agent of the customer. As such, the undersigned agrees and acknowledges that this contract for services, materials, products, and/or supplies includes all of and only those terms and conditions appearing on the front and back of this document. No additional or substitute terms and/or conditions shall become a part of this contract without the written consent of an officer of Basic Energy Services LP.

SIGNED: *X Alan Loffi*
(WELL OWNER, OPERATOR, CONTRACTOR OR AGENT)

ITEM/PRICE REF. NO.	MATERIAL, EQUIPMENT AND SERVICES USED	UNIT	QUANTITY	UNIT PRICE	\$ AMOUNT
CP 101	A-COM Blend cement	SK	175		3,150 00
CP 100C	COMMON cement	SK	175		2,800 00
CC 102	Cellofibre	LB	88		325 60
CC 109	Calcium chloride	LB	825		866 25
CF 105	TOP rubber plug 8 3/8	EA	1		225 00
CF 203	Guide shoe 8 3/8	EA	1		550 00
CF 1453	FLAP TYPE INPORT FLOAT VALVE 8 3/8	EA	1		280 00
E 100	P.M. Miles	MI	40		170 00
E 101	Heavy eq. Miles	MI	80		560 00
E 113	Pipe + Bulk Pci	TM	660		1,452 00
CC 201	Depth charge 50'-100'	4HS	1		1,200 00
CC 240	Blend + mix charge	SK	350		490 00
CC 504	Plug container	EA	1		250 00
5003	Service Supervisor	EA	1		175 00

SUB TOTAL *66* 8,995 57

CHEMICAL / ACID DATA:			

SERVICE & EQUIPMENT	%TAX ON \$	
MATERIALS	%TAX ON \$	
TOTAL		

SERVICE REPRESENTATIVE: <i>MIKE MATTI</i>	THE ABOVE MATERIAL AND SERVICE ORDERED BY CUSTOMER AND RECEIVED BY: <i>X Alan Loffi</i> (WELL OWNER OPERATOR CONTRACTOR OR AGENT)
---	--

FIELD SERVICE ORDER NO.

BASIC

energy services, L.P.

TREATMENT REPORT

Customer HERMAN L LOEB LLC	Lease No.	Date 3-9-14	
Lease RANDOL	Well # 2-20		
Field Order # 9807	Station PRATT	Casing 8 5/8	Depth 608.89
Type Job CNW SURFACE		County KIOWA	State KS
Formation		Legal Description 20-27-18	

PIPE DATA		PERFORATING DATA		FLUID USED		TREATMENT RESUME		
Casing Size 8 5/8	Tubing Size	Shots/Ft		Acid 175 SKS A CON	RATE 300 cc	PRESS 14 #	ISIP	
Depth 608.89	Depth	From	To	Pre Pad 175 SKS common	Max 270 cc	4 #	5 Min.	
Volume 38.7	Volume	From	To	Pad	Min		10 Min.	
Max Press 750	Max Press	From	To	Frac	Avg		15 Min.	
Well Connection PC	Annulus Vol.	From	To		HHP Used		Annulus Pressure	
Plug Depth 566.76	Packer Depth	From	To	Flush 36	Gas Volume		Total Load	

Customer Representative George	Station Manager Kevin Guidry	Treater Mike MATTIN
-----------------------------------	---------------------------------	------------------------

Service Units 37586	77680 19905	19959	73768	33708	20920
Driver Names MATTIN	KURT	Egging		KUENIN	

Time	Casing Pressure	Tubing Pressure	Bbbs. Pumped	Rate	Service Log
7:30 AM					ON LOCATION / SAFETY MEETING
8:35					Run 8 5/8 casing, Guide shoe + insert
10:10					CASING ON BOTTOM
10:20					Hook up to casing / Break circ w R.O.
10:35	250		5	5	PUMP 5 BBL H ₂ O
10:37	200		78	6	Mix 175 SKS A CON
10:53	200		37	6	Mix 175 SKS common
11:02					RELEASE PLUG
11:04	200			5	START DISPLACEMENT
11:12	600		36		PLUG DOWN, release + hold
					30 BBL CMT TO PIT
					JOB COMPLETE
					THANK YOU!
					MIKE MATTIN



6976
 AT Randel
 6438

PAGE 1 of 1	INVOICE NO 1007589	INVOICE DATE 03/18/2014
INVOICE NUMBER 1718 - 91439404		

Pratt (620) 672-1201
 B HERMAN L LOEB LLC
 I PO Box: 838
 L LAWRENCEVILLE
 L IL US 62439
 T
 O **ATTN:** ACCOUNTS PAYABLE

J LEASE NAME Randel 2-20
O LOCATION
B COUNTY Kiowa
S STATE KS
I JOB DESCRIPTION Cement-New Well Casing/Pi
T JOB CONTACT
E

JOB #	EQUIPMENT #	PURCHASE ORDER NO.	TERMS	DUE DATE	
40702410	27463		Net - 30 days	04/17/2014	
For Service Dates: 03/17/2014 to 03/17/2014					
0040702410					
171809814A Cement-New Well Casing/Pi 03/17/2014					
Cement 5 1/2" Longstring					
PAII 78374 MAR 25 2014 SCANNED					
50/50 POZ		250.00	EA	8.36	2,090.00 T
Celloflake		63.00	EA	2.81	177.16 T
Gypsum		1,050.00	EA	0.57	598.50 T
FLA-322		105.00	EA	5.70	598.50 T
Mud Flush		1,000.00	EA	1.14	1,140.00 T
Gilsonite		1,501.00	EA	0.51	764.31 T
KCL Potassium Chloride		566.00	EA	1.14	645.24 T
Claymax KCL Substitut.ute		5.00	EA	26.60	133.00 T
"Latch Down Plug & Baffle, 5 1/2"" (Blu		1.00	EA	304.00	304.00
"Auto Fill Float Shoe 5 1/2"" (Blue)"		1.00	EA	273.60	273.60
"Turbolizer, 5 1/2"" (Blue)"		12.00	EA	83.60	1,003.20
"5 1/2"" Basket (Blue)"		2.00	EA	220.40	440.80
"Cement Scratchers Cable Type, 5 1/2"" "		8.00	EA	57.00	456.00
"Unit Mileage Chg (PU, cars one way)"		40.00	MI	3.23	129.20
Heavy Equipment Mileage		80.00	MI	5.32	425.60
"Proppant & Bulk Del. Chgs., per ton mil		420.00	EA	1.67	702.24
Depth Charge; 4001'-5000'		1.00	EA	1,915.20	1,915.20
Blending & Mixing Service Charge		250.00	BAG	1.06	266.00
Plug Container Util. Chg.		1.00	EA	190.00	190.00
"Service Supervisor, first 8 hrs on loc.		1.00	EA	133.00	133.00
PLEASE REMIT TO:			SEND OTHER CORRESPONDENCE TO:		
BASIC ENERGY SERVICES, LP			BASIC ENERGY SERVICES, LP		SUB TOTAL
PO BOX 841903			801 CHERRY ST, STE 2100		TAX
DALLAS, TX 75284-1903			FORT WORTH, TX 76102		INVOICE TOTAL
					12,385.55
					439.49
					12,825.04



BASICSM
ENERGY SERVICES
PRESSURE PUMPING & WIRELINE

10244 NE Hwy. 61
P.O. Box 8613
Pratt, Kansas 67124
Phone 620-672-1201

FIELD SERVICE TICKET
1718 09814 A

DATE _____ TICKET NO. _____

DATE OF JOB 3-17-14 DISTRICT Pratt		NEW WELL <input checked="" type="checkbox"/> OLD WELL <input type="checkbox"/> PROD <input type="checkbox"/> INJ <input type="checkbox"/> WDW <input type="checkbox"/> CUSTOMER ORDER NO.:							
CUSTOMER Norman L Lueb LLC		LEASE Randel WELL NO. 2-2							
ADDRESS		COUNTY Nowak STATE Ks							
CITY STATE		SERVICE CREW MATTAI, Egging, Harrison							
AUTHORIZED BY		JOB TYPE: CAW Long string							
EQUIPMENT#	HRS	EQUIPMENT#	HRS	EQUIPMENT#	HRS	TRUCK CALLED	DATE	AM PM	TIME
37586	1						3-16-14		8:00
						ARRIVED AT JOB	3-17-14		9:45
27463	1					START OPERATION			2:20
						FINISH OPERATION			3:10
70959/19918	1					RELEASED			4:00
						MILES FROM STATION TO WELL			40

CONTRACT CONDITIONS: (This contract must be signed before the job is commenced or merchandise is delivered).

The undersigned is authorized to execute this contract as an agent of the customer. As such, the undersigned agrees and acknowledges that this contract for services, materials, products, and/or supplies includes all of and only those terms and conditions appearing on the front and back of this document. No additional or substitute terms and/or conditions shall become a part of this contract without the written consent of an officer of Basic Energy Services LP.

SIGNED: (WELL OWNER, OPERATOR, CONTRACTOR OR AGENT)

ITEM/PRICE REF. NO.	MATERIAL, EQUIPMENT AND SERVICES USED	UNIT	QUANTITY	UNIT PRICE	\$ AMOUNT
CP 104	50/50 POZ	SK	200		2,200.00
CP 104	50/50 POZ	SK	50		550.00
CC 102	CelloFlare	LB	63		233.10
CC 113	Sypsum	LB	1050		787.50
CC 129	FIA-322	LB	105		787.50
CC 201	Silsonite	LB	1501		1,005.67
C 700	KCL POTASSIUM CHLORIDE	LB	566		849.00
CF 607	LATCH DOWN PLUG + Baffle 5 1/2	EA	1		400.00
CF 1251	Auto fill float shoe 5 1/2	EA	1		360.00
CF 1901	5 1/2 basket	EA	2		580.00
CF 1651	turbolizer 5 1/2	EA	12		1,320.00
CF 2001	CMT SCRATCHING CABLE TYPE	EA	8		800.00
C 704	CLAYmax	SAL	5		175.00
CC 151	MUD FLUSH	SAL	1000		1,500.00

SUB TOTAL **ke**

CHEMICAL / ACID DATA:			

SERVICE & EQUIPMENT	%TAX ON \$	
MATERIALS	%TAX ON \$	
TOTAL		

SERVICE REPRESENTATIVE MIKE MATTAI	THE ABOVE MATERIAL AND SERVICE ORDERED BY CUSTOMER AND RECEIVED BY: (WELL OWNER OPERATOR CONTRACTOR OR AGENT)
---	--

FIELD SERVICE ORDER NO. _____

Customer <i>Herman L Lueb LLC</i>	Lease No.	Date <i>3-17-14</i>
Lease <i>RANDOL</i>	Well # <i>2-20</i>	
Field Order # <i>7814</i>	Station <i>Pratt</i>	Casing <i>5 1/2</i>
		Depth <i>4892.19</i>
Type Job <i>CNW Long String</i>	Formation	County <i>Kiowa</i>
		State <i>KS</i>
		Legal Description <i>20-27-18</i>

PIPE DATA		PERFORATING DATA		FLUID USED		TREATMENT RESUME		
Casing Size <i>5 1/2</i>	Tubing Size	Shots/Ft		Acid <i>250 SKS 50/50 POZ</i>	RATE	PRESS	ISIP	
Depth <i>4892.19</i>	Depth	From	To	Pre-Pad <i>.5% H₂O 322</i>	Max <i>5% KCL</i>	<i>6#</i>	<i>5 Min.</i>	<i>50% CH₂ S-C</i>
Volume <i>116.4</i>	Volume	From	To	Pad	Min		10 Min.	
Max Press <i>1500</i>	Max Press	From	To	Frac	Avg		15 Min.	
Well Connection <i>P.C.</i>	Annulus Vol.	From	To		HHP Used		Annulus Pressure	
Plug Depth <i>4865</i>	Packer Depth	From	To	Flush	Gas Volume		Total Load	

Customer Representative	Station Manager	Treater
Service Units <i>37586</i>	<i>27463</i>	<i>70959</i>
Driver Names <i>MATTA</i>	<i>Eggins</i>	<i>HANSON</i>

Time	Casing Pressure	Tubing Pressure	Bbls. Pumped	Rate	Service Log
9:45 AM					ON LOCATION / SAFETY MEETING
10:15					Run 5 1/2 15.5# casing 116 JTS
					CENTS on 1, 2, 3, 4, 7, 10, 11, 12, 17, 23, 27, 31
					BASKETS on 10, 20
					SCRATCHES 3 on #1 5 on #3
11:30					Circulate 30 min @ JT #60
12:55					CASING ON BOTTOM
1:15					Hook up to casing/Break circ w. Rig
2:20	400		5	5	PUMP 5 BBL H ₂ O
2:21	400		24	5	PUMP 24 BBL MUD FLUSH
2:26	300		5	5	PUMP 5 BBL H ₂ O
2:27	400		48	5.5	Mix 200 SKS 50/50 POZ
2:37			4	3	WASH PUMP + LINE, RELEASE PLUG
2:40	250			6.5	START DISPLACEMENT w. 2% KCL
2:54	500		75	5	LIFT PRESSURE
2:56	600		90	5	STOP RECIRCULATING
2:58	600		105	3	SLOW RATE
3:00	1500		116		PLUG DOWN - RELEASED + HOLD
			7.5		PLUG RAT + MUDGUL
					CIRCULATION THEN JOB

JOB COMPLETE
THANK YOU
MIKE MATTA

Conservation Division
Finney State Office Building
130 S. Market, Rm. 2078
Wichita, KS 67202-3802



Phone: 316-337-6200
Fax: 316-337-6211
<http://kcc.ks.gov/>

Shari Feist Albrecht, Chair
Jay Scott Emler, Commissioner
Pat Apple, Commissioner

Sam Brownback, Governor

July 17, 2014

Jesse Middagh
HERMAN L. LOEB, LLC
PO BOX 838
LAWRENCEVILLE, IL 62439

Re: ACO-1
API 15-097-21787-00-00
RANDEL 2-20
SW/4 Sec.20-27S-18W
Kiowa County, Kansas

Dear Jesse Middagh:

K.A.R. 82-3-107 provides for all completion information to be filed within 120 days of the spud date. Subsection(e)(2) of that regulation states "All rights to confidentiality shall be lost if the filings are not timely."

The above referenced well was spudded on 03/08/2014 and the ACO-1 was received on July 15, 2014 (not within the 120 days timely requirement).

Therefore, your request for confidential treatment of data contained within the ACO-1 filing cannot be granted at this time.

If you should have any questions, please do not hesitate to contact me at (316)337-6200.

Sincerely,

Production Department