



**TEMPORARY ABANDONMENT WELL APPLICATION**

All blanks must be complete

OPERATOR: License# \_\_\_\_\_  
Name: \_\_\_\_\_  
Address 1: \_\_\_\_\_  
Address 2: \_\_\_\_\_  
City: \_\_\_\_\_ State: \_\_\_\_\_ Zip: \_\_\_\_\_ + \_\_\_\_\_  
Contact Person: \_\_\_\_\_  
Phone: (\_\_\_\_\_) \_\_\_\_\_  
Contact Person Email: \_\_\_\_\_  
Field Contact Person: \_\_\_\_\_  
Field Contact Person Phone: (\_\_\_\_\_) \_\_\_\_\_

API No. 15- \_\_\_\_\_  
Spot Description: \_\_\_\_\_  
\_\_\_\_ - \_\_\_\_ - \_\_\_\_ - \_\_\_\_ Sec. \_\_\_\_\_ Twp. \_\_\_\_\_ S. R. \_\_\_\_\_  E  W  
\_\_\_\_\_ feet from  N /  S Line of Section  
\_\_\_\_\_ feet from  E /  W Line of Section  
GPS Location: Lat: \_\_\_\_\_, Long: \_\_\_\_\_  
(e.g. xx.xxxxx) (e.g. -xxx.xxxxx)  
Datum:  NAD27  NAD83  WGS84  
County: \_\_\_\_\_ Elevation: \_\_\_\_\_  GL  KB  
Lease Name: \_\_\_\_\_ Well #: \_\_\_\_\_  
Well Type: (check one)  Oil  Gas  OG  WSW  Other: \_\_\_\_\_  
 SWD Permit #: \_\_\_\_\_  ENHR Permit #: \_\_\_\_\_  
 Gas Storage Permit #: \_\_\_\_\_  
Spud Date: \_\_\_\_\_ Date Shut-In: \_\_\_\_\_

	Conductor	Surface	Production	Intermediate	Liner	Tubing
Size						
Setting Depth						
Amount of Cement						
Top of Cement						
Bottom of Cement						

Casing Fluid Level from Surface: \_\_\_\_\_ How Determined? \_\_\_\_\_ Date: \_\_\_\_\_  
Casing Squeeze(s): \_\_\_\_\_ to \_\_\_\_\_ w / \_\_\_\_\_ sacks of cement, \_\_\_\_\_ to \_\_\_\_\_ w / \_\_\_\_\_ sacks of cement. Date: \_\_\_\_\_  
(top) (bottom) (top) (bottom)  
Do you have a valid Oil & Gas Lease?  Yes  No  
Depth and Type:  Junk in Hole at \_\_\_\_\_  Tools in Hole at \_\_\_\_\_ Casing Leaks:  Yes  No Depth of casing leak(s): \_\_\_\_\_  
(depth) (depth)  
Type Completion:  ALT. I  ALT. II Depth of:  DV Tool: \_\_\_\_\_ w / \_\_\_\_\_ sacks of cement  Port Collar: \_\_\_\_\_ w / \_\_\_\_\_ sack of cement  
(depth) (depth)  
Packer Type: \_\_\_\_\_ Size: \_\_\_\_\_ Inch Set at: \_\_\_\_\_ Feet  
Total Depth: \_\_\_\_\_ Plug Back Depth: \_\_\_\_\_ Plug Back Method: \_\_\_\_\_

**Geological Data:**

Formation Name	Formation Top	Formation Base	Completion Information
1. _____	At: _____	to _____ Feet	Perforation Interval _____ to _____ Feet or Open Hole Interval _____ to _____ Feet
2. _____	At: _____	to _____ Feet	Perforation Interval _____ to _____ Feet or Open Hole Interval _____ to _____ Feet

UNDER PENALTY OF PERJURY I HEREBY ATTEST THAT THE INFORMATION CONTAINED HEREIN IS TRUE AND CORRECT TO THE BEST OF MY KNOWLEDGE

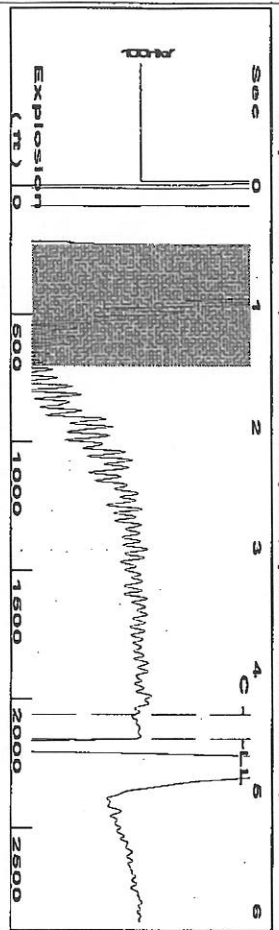
**Submitted Electronically**

<b>Do NOT Write in This Space - KCC USE ONLY</b>	Date Tested: _____	Results: _____	Date Plugged: _____	Date Repaired: _____	Date Put Back in Service: _____
	Review Completed by: _____ Comments: _____				
TA Approved: <input type="checkbox"/> Yes <input type="checkbox"/> Denied Date: _____					

**Mail to the Appropriate KCC Conservation Office:**

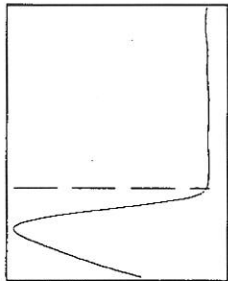
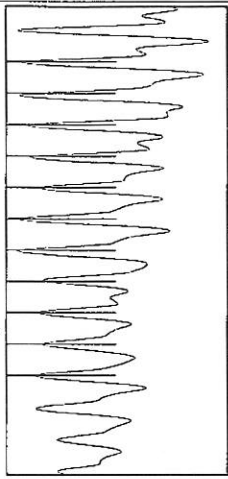
	KCC District Office #1 - 210 E. Frontview, Suite A, Dodge City, KS 67801	Phone 620.225.8888
	KCC District Office #2 / UPGS - 3450 N. Rock Road, Building 600, Suite 601, Wichita, KS 67226	Phone 316.630.4000
	KCC District Office #3 - 1500 SW Seventh Steet, Chanute, KS 66720	Phone 620.432.2300
	KCC District Office #4 - 2301 E. 13th Street, Hays, KS 67601-2651	Phone 785.625.0550

Group: Pratt Well Service, Inc Well: Paul Meyer #6 (acquired on: 05/29/14 10:42:51)



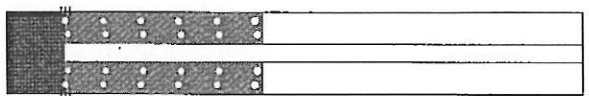
Filter Type High Pass Automatic Collar Count Yes Time 4.576 sec  
 Manual Acoustic Vel 943.452 ft/s Manual JTS/sec 14.881 Joints 67.9494 Jts  
 Depth 2153.99 ft

[0.5 to 1.5 (Sec)]

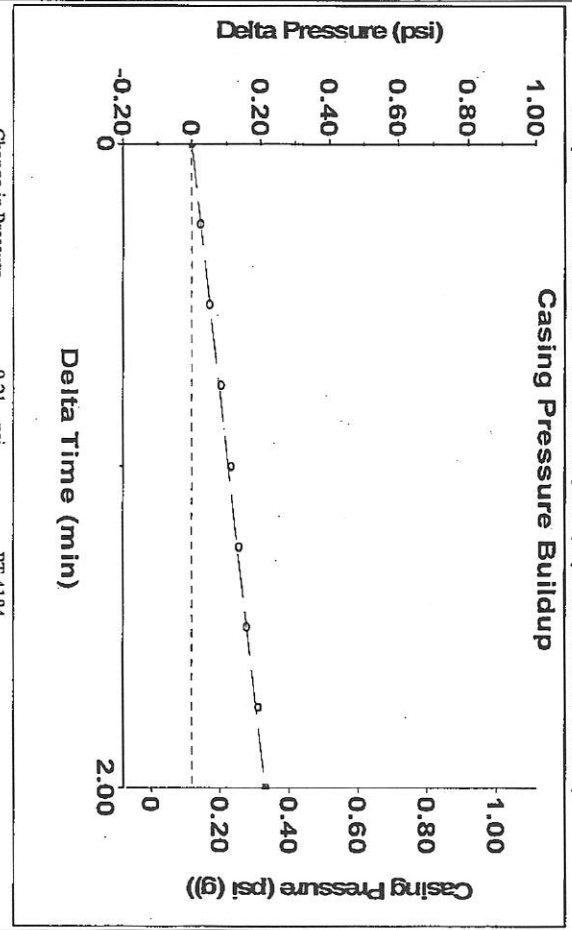


Group: Pratt Well Service, Inc Well: Paul Meyer #6 (acquired on: 05/29/14 10:42:51)

<b>Production</b>	<b>Potential</b>	<b>Casing Pressure</b>	<b>Producing</b>
Current ---	--- BBL/D	0.1 psi (g)	500.2 psi (g)
Water ---	--- BBL/D	0.2 psi	Producing BHP
Gas ---	--- Mscf/D	2.00 min	495.6 psi (g)
IPR Method PBHP/SBHP	Vogel ---	Gas/Liquid Interface Pressure 1.3 psi (g)	Static BHP ---
Production Efficiency ---	0.0	Liquid Level Depth 2153.99 ft	--- psi (g)
Oil 40 deg API		Tubing Intake Depth 3790.00 ft	
Water 1.05 Sp.Gr. H2O		Formation Depth 3780.00 ft	
Gas 1.03 Sp.Gr. AIR			
Acoustic Velocity 941.431 ft/s			
Formation Submergence Total Gaseous Liquid Column HT (TYD) 1636 ft			
Equivalent Gas Free Liquid HT (TYD) 1476 ft			
Acoustic Test			

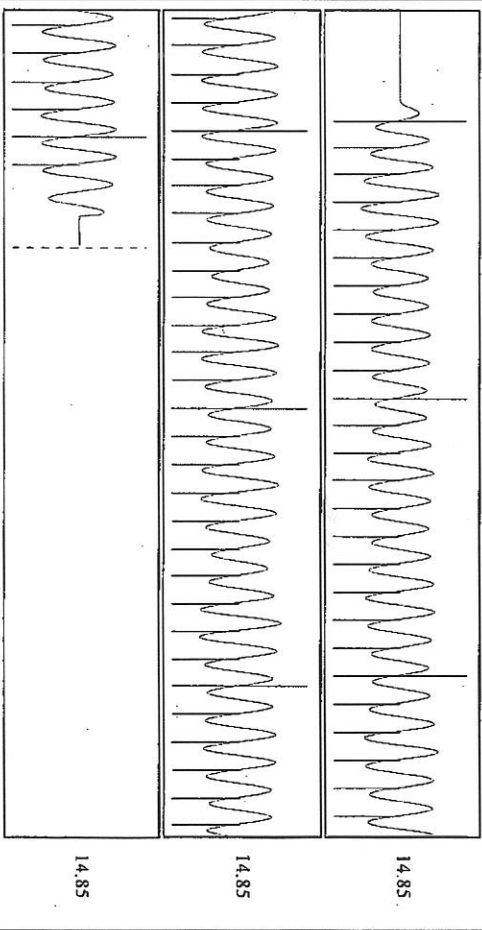


Group: Pratt Well Service, Inc Well: Paul Meyer #6 (acquired on: 05/29/14 10:42:51)



Change in Pressure 0.21 psi PT 4184  
 Change in Time 2.00 min Range 0 - 7 psi

Group: Pratt Well Service, Inc Well: Paul Meyer #6 (acquired on: 05/29/14 10:42:51)



Acoustic Velocity 941.431 ft/s Joints counted 61  
 Joints Per Second 14.8491 Jts/sec Joints to liquid level 67.9494  
 Depth to liquid level 2153.99 ft Filter Width 12.881  
 Automatic Collar Count Yes Time to 1st Collar 0.268 16.881 4.376

Conservation Division  
District Office No. 1  
210 E. Frontview, Suite A  
Dodge City, KS 67801



Phone: 620-225-8888  
Fax: 620-225-8885  
<http://kcc.ks.gov/>

Shari Feist Albrecht, Chair  
Jay Scott Emler, Commissioner  
Pat Apple, Commissioner

Sam Brownback, Governor

June 27, 2014

Kenneth C. Gates  
Pratt Well Service, Inc.  
PO BOX 847  
PRATT, KS 67124-0847

Re: Temporary Abandonment  
API 15-047-20899-00-00  
PAUL MEYER 6  
NE/4 Sec.23-24S-16W  
Edwards County, Kansas

Dear Kenneth C. Gates:

"Your temporary abandonment (TA) application for the well listed above has been approved. In accordance with K.A.R. 82-3-111 the TA status of this well will expire 06/27/2015.

- \* If you return this well to service or plug it, please notify the District Office.
- \* If you sell this well you are required to file a Transfer of Operator form, T-1.
- \* If the well will remain temporarily abandoned, you must submit a new TA application, CP-111, before 06/27/2015.

You may contact me at the number above if you have questions.

Very truly yours,

Steve Pfeifer"