



**TRILOBITE  
TESTING, INC**

# DRILL STEM TEST REPORT

Anchor Bay Petroleum LLC

**34 13s 20w Ellis**

2713 Ash St  
Hays KS 67601-1677

**Henman SW # 1**

Job Ticket: 56014

**DST#: 3**

ATTN: Ed Glassman

Test Start: 2014.03.06 @ 07:32:00

## GENERAL INFORMATION:

Formation: **Arbuckle**

Deviated: No Whipstock: 2305.00 ft (KB)

Time Tool Opened: 10:01:00

Time Test Ended: 15:18:00

Test Type: Conventional Bottom Hole (Reset)

Tester: Jim Svaty

Unit No: 76

**Interval: 3870.00 ft (KB) To 3901.00 ft (KB) (TVD)**

Reference Elevations: 2305.00 ft (KB)

Total Depth: 3901.00 ft (KB) (TVD)

2300.00 ft (CF)

Hole Diameter: 7.88 inches Hole Condition: Fair

KB to GR/CF: 5.00 ft

**Serial #: 8289 Outside**

Press@RunDepth: 46.04 psig @ 3884.00 ft (KB)

Capacity: 8000.00 psig

Start Date: 2014.03.06

End Date:

2014.03.06

Last Calib.:

2014.03.06

Start Time: 07:32:02

End Time:

15:18:00

Time On Btm:

2014.03.06 @ 10:00:45

Time Off Btm:

2014.03.06 @ 13:01:30

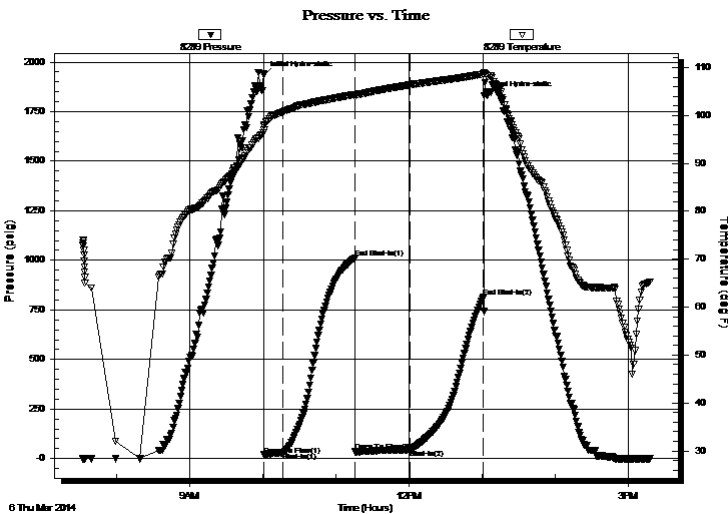
TEST COMMENT: 15-IFP- Surface Blow Building to 2 1/4in.

60-ISIP- No Blow

45-FFP- Surface Blow Building to 2in.

60-FSIP- No Blow

## PRESSURE SUMMARY



Time (Min.)	Pressure (psig)	Temp (deg F)	Annotation
0	1933.77	97.89	Initial Hydro-static
1	19.09	96.93	Open To Flow (1)
16	29.77	100.71	Shut-In(1)
75	1010.32	104.37	End Shut-In(1)
75	34.91	103.82	Open To Flow (2)
121	46.04	106.39	Shut-In(2)
181	813.40	108.61	End Shut-In(2)
181	1830.81	108.98	Final Hydro-static

## Recovery

Length (ft)	Description	Volume (bbl)
30.00	OCM 10%o 90%m	0.15
27.00	OCM 35%o 65%m	0.13
3.00	CO 100%	0.01

\* Recovery from multiple tests

## Gas Rates

Choke (inches)	Pressure (psig)	Gas Rate (Mcf/d)



**TRILOBITE  
TESTING, INC**

# DRILL STEM TEST REPORT

## FLUID SUMMARY

Anchor Bay Petroleum LLC

**34 13s 20w Ellis**

2713 Ash St  
Hays KS 67601-1677

**Henman SW # 1**

Job Ticket: 56014

**DST#: 3**

ATTN: Ed Glassman

Test Start: 2014.03.06 @ 07:32:00

### Mud and Cushion Information

Mud Type: Gel Chem

Cushion Type:

Oil API:

37 deg API

Mud Weight: 9.00 lb/gal

Cushion Length:

ft

Water Salinity:

ppm

Viscosity: 45.00 sec/qt

Cushion Volume:

bbbl

Water Loss: 8.37 in<sup>3</sup>

Gas Cushion Type:

Resistivity: ohm.m

Gas Cushion Pressure:

psig

Salinity: 5000.00 ppm

Filter Cake: 2.00 inches

### Recovery Information

Recovery Table

Length ft	Description	Volume bbbl
30.00	OCM 10%o 90%m	0.148
27.00	OCM 35%o 65%m	0.133
3.00	CO 100%	0.015

Total Length: 60.00 ft      Total Volume: 0.296 bbl

Num Fluid Samples: 0

Num Gas Bombs: 0

Serial #:

Laboratory Name:

Laboratory Location:

Recovery Comments:

