

L.D. DRILLING, INC.
FRENCH LEASE
SW.1/4, SECTION 3, T23S, R14W
STAFFORD COUNTY, KANSAS

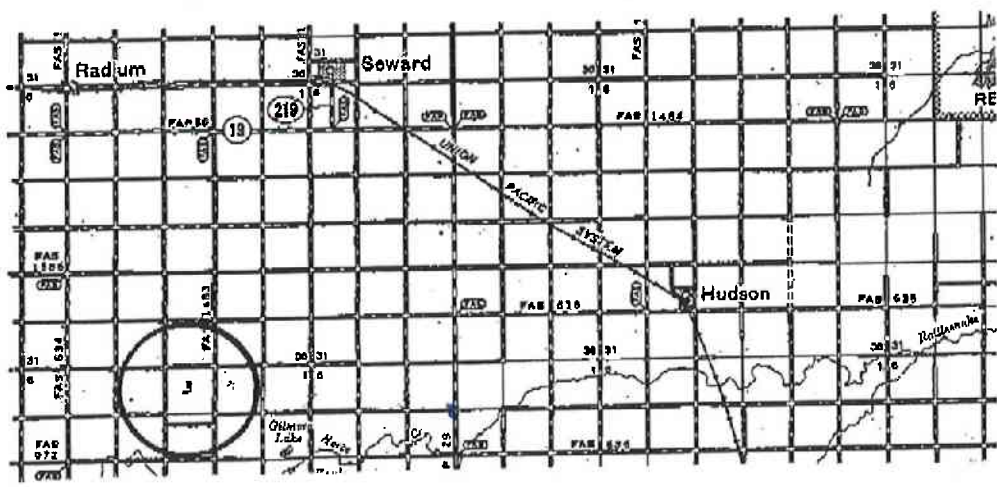
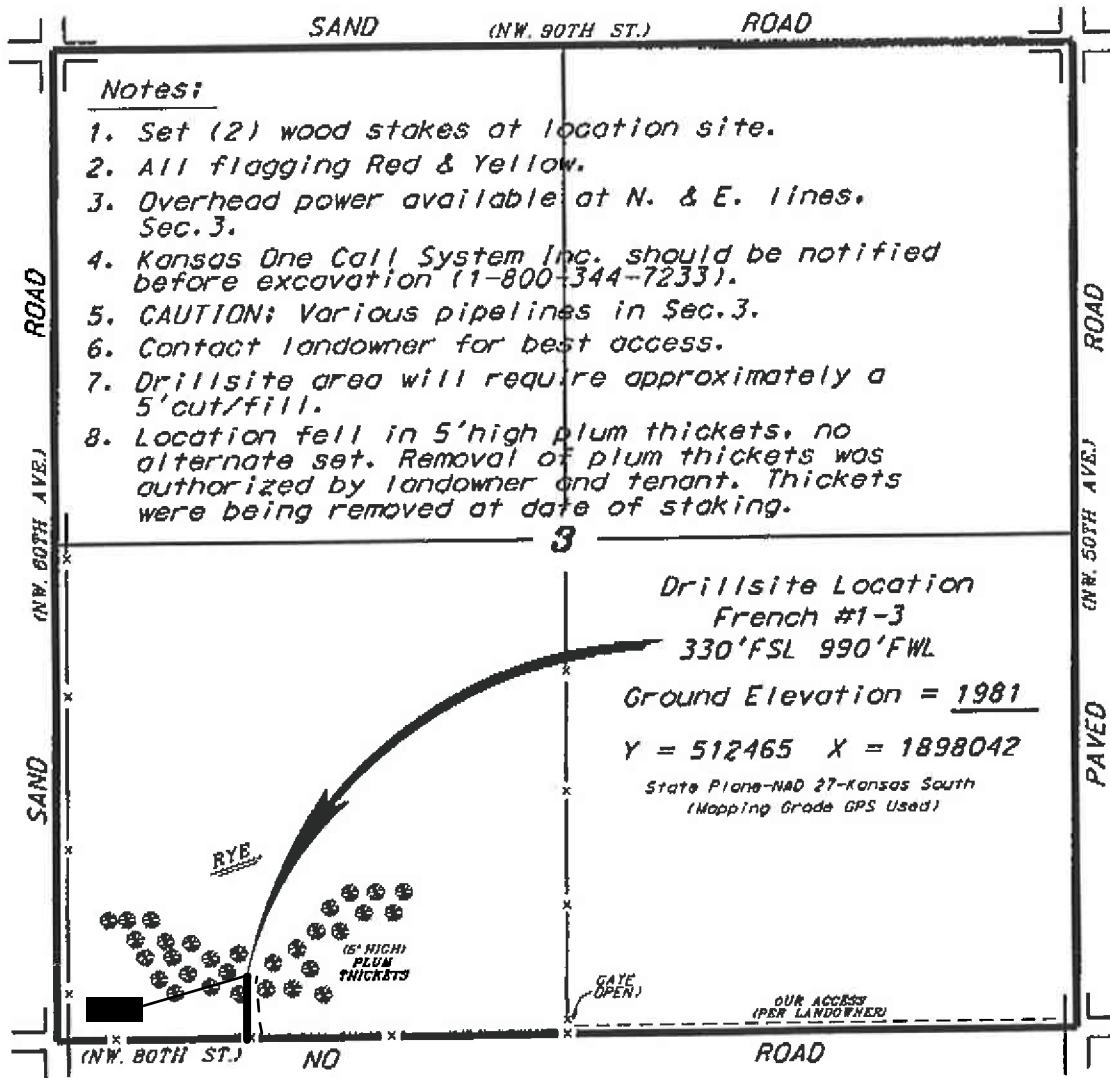
Directions:

From the intersection of Highway 281 and Highway 19 go 6.0 miles South, then go 5.0 miles West to the SE. corner of Section 3, then go 0.81 miles West, then go 0.06 miles North to location.

Notes:

1. Set (2) wood stakes at location site.
2. All flagging Red & Yellow.
3. Overhead power available at N. & E. lines. Sec. 3.
4. Kansas One Call System Inc. should be notified before excavation (1-800-344-7233).
5. CAUTION; Various pipelines in Sec. 3.
6. Contact landowner for best access.
7. Drillsite area will require approximately a 5' cut/fill.
8. Location fell in 5' high plum thickets, no alternate set. Removal of plum thickets was authorized by landowner and tenant. Thickets were being removed at date of staking.

Ingress and egress to location as shown on this plot is per usage only and may not be legally opened for public use. Contact landowner, tenant and county road department for access.



Contracting data is based upon the best maps and photographs available to us and upon a regular section of lands containing 640 acres.

Approximate section lines were determined using the normal standard of care of oilfield surveyors practicing in the state of Kansas. The section corners, which establish the precise section lines, were not necessarily located, and the exact location of the drillsite location in the section is not guaranteed. Therefore, the operator assuming this service and accepting this plot and all other parties relying thereon agree to hold Central Kansas Oilfield Services, Inc., its officers and employees harmless from all losses, costs and expenses and said entities released from any liability from incidental or consequential damages.

Elevations derived from National Geodetic Vertical Datum.

Date May 28, 2014