



**TRILOBITE
TESTING, INC.**

DRILL STEM TEST REPORT

Samuel Gary Jr. & Associates

12-11s-22w Trego KS

1515 Wynkoop Dr. STE 700
Denver CO, 80202

Walz Family 1-12

ATTN: Dan Pritchard

Job Ticket: 56073

DST#: 1

Test Start: 2014.02.16 @ 11:30:00

GENERAL INFORMATION:

Formation: **LKC "A-C"**

Deviated: No Whipstock: ft (KB)

Time Tool Opened: 13:37:30

Time Test Ended: 19:27:15

Test Type: Conventional Bottom Hole (Initial)

Tester: Cody Bloedorn

Unit No: 73

Interval: 3457.00 ft (KB) To 3518.00 ft (KB) (TVD)

Reference Elevations: 2184.00 ft (KB)

Total Depth: 3518.00 ft (KB) (TVD)

2176.00 ft (CF)

Hole Diameter: 7.88 inches Hole Condition: Fair

KB to GR/CF: 8.00 ft

Serial #: 8655 Outside

Press @ Run Depth: 86.99 psig @ 3496.00 ft (KB)

Capacity: 8000.00 psig

Start Date: 2014.02.16

End Date: 2014.02.16

Last Calib.: 2014.02.16

Start Time: 11:30:05

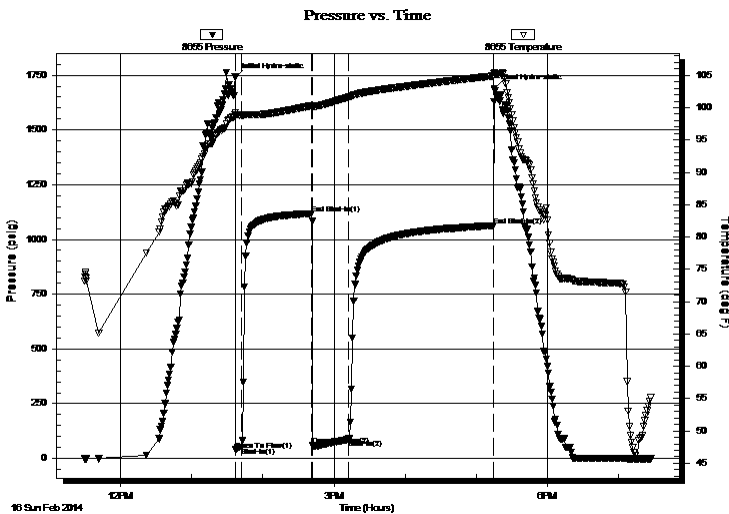
End Time: 19:27:14

Time On Btm: 2014.02.16 @ 13:37:15

Time Off Btm: 2014.02.16 @ 17:15:15

TEST COMMENT: 05 - IF- 3 1/2" blow
60 - IS- Surface return
30 - FF- B.O.B. in 17 minutes
120 - FS- Surface return

PRESSURE SUMMARY



Time (Min.)	Pressure (psig)	Temp (deg F)	Annotation
0	1741.00	99.20	Initial Hydro-static
1	39.53	98.75	Open To Flow (1)
5	52.53	98.79	Shut-In(1)
64	1118.20	100.31	End Shut-In(1)
65	60.02	100.09	Open To Flow (2)
96	86.99	101.61	Shut-In(2)
217	1063.31	104.90	End Shut-In(2)
218	1688.15	105.37	Final Hydro-static

Recovery

Length (ft)	Description	Volume (bbl)
62.00	GSOCWM, 5%G, 5%O, 40%W, 50%M	0.60
35.00	MCWO, 20%W, 20%M, 60%O	0.49
0.00	154' of G.I.P.	0.00

Gas Rates

	Choke (inches)	Pressure (psig)	Gas Rate (Mcf/d)



**TRILOBITE
TESTING, INC.**

DRILL STEM TEST REPORT

Samuel Gary Jr. & Associates

12-11s-22w Trego KS

1515 Wynkoop Dr. STE 700
Denver CO, 80202

Walz Family 1-12

Job Ticket: 56073

DST#: 1

ATTN: Dan Pritchard

Test Start: 2014.02.16 @ 11:30:00

GENERAL INFORMATION:

Formation: **LKC "A-C"**

Deviated: No Whipstock: ft (KB)

Time Tool Opened: 13:37:30

Time Test Ended: 19:27:15

Test Type: Conventional Bottom Hole (Initial)

Tester: Cody Bloedorn

Unit No: 73

Interval: 3457.00 ft (KB) To 3518.00 ft (KB) (TVD)

Reference Elevations: 2184.00 ft (KB)

Total Depth: 3518.00 ft (KB) (TVD)

2176.00 ft (CF)

Hole Diameter: 7.88 inches Hole Condition: Fair

KB to GR/CF: 8.00 ft

Serial #: 8875 Fluid

Press @RunDepth: psig @ 3421.00 ft (KB)

Capacity: 8000.00 psig

Start Date: 2014.02.16

End Date: 2014.02.16

Last Calib.: 2014.02.16

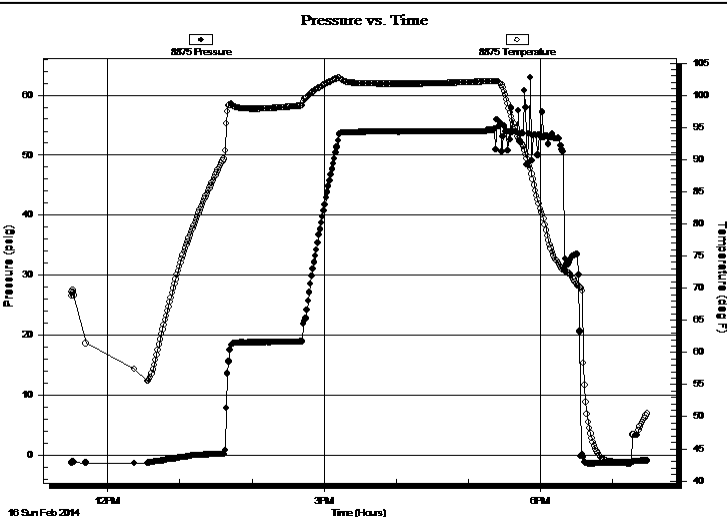
Start Time: 11:30:05

End Time: 19:28:44

Time On Btm:

Time Off Btm:

TEST COMMENT: 05 - IF- 3 1/2" blow
60 - IS- Surface return
30 - FF- B.O.B. in 17 minutes
120 - FS- Surface return



PRESSURE SUMMARY

Time (Min.)	Pressure (psig)	Temp (deg F)	Annotation

Recovery

Length (ft)	Description	Volume (bbl)
62.00	GSOCWM, 5%G, 5%O, 40%W, 50%M	0.60
35.00	MCWO, 20%W, 20%M, 60%O	0.49
0.00	154' of G.I.P.	0.00

Gas Rates

	Choke (inches)	Pressure (psig)	Gas Rate (Mcf/d)



**TRILOBITE
TESTING, INC.**

DRILL STEM TEST REPORT

FLUID SUMMARY

Samuel Gary Jr. & Associates

12-11s-22w Trego KS

1515 Wynkoop Dr. STE 700
Denver CO, 80202

Walz Family 1-12

Job Ticket: 56073

DST#: 1

ATTN: Dan Pritchard

Test Start: 2014.02.16 @ 11:30:00

Mud and Cushion Information

Mud Type: Gel Chem

Cushion Type:

Oil API:

32 deg API

Mud Weight: 9.00 lb/gal

Cushion Length:

ft

Water Salinity:

32000 ppm

Viscosity: 58.00 sec/qt

Cushion Volume:

bbbl

Water Loss: 7.98 in³

Gas Cushion Type:

Resistivity: ohm.m

Gas Cushion Pressure:

psig

Salinity: 3000.00 ppm

Filter Cake: inches

Recovery Information

Recovery Table

Length ft	Description	Volume bbbl
62.00	GSOCWM, 5%G, 5%O, 40%W, 50%M	0.596
35.00	MCWO, 20%W, 20%M, 60%O	0.491
0.00	154' of G.I.P.	0.000

Total Length: 97.00 ft Total Volume: 1.087 bbl

Num Fluid Samples: 0

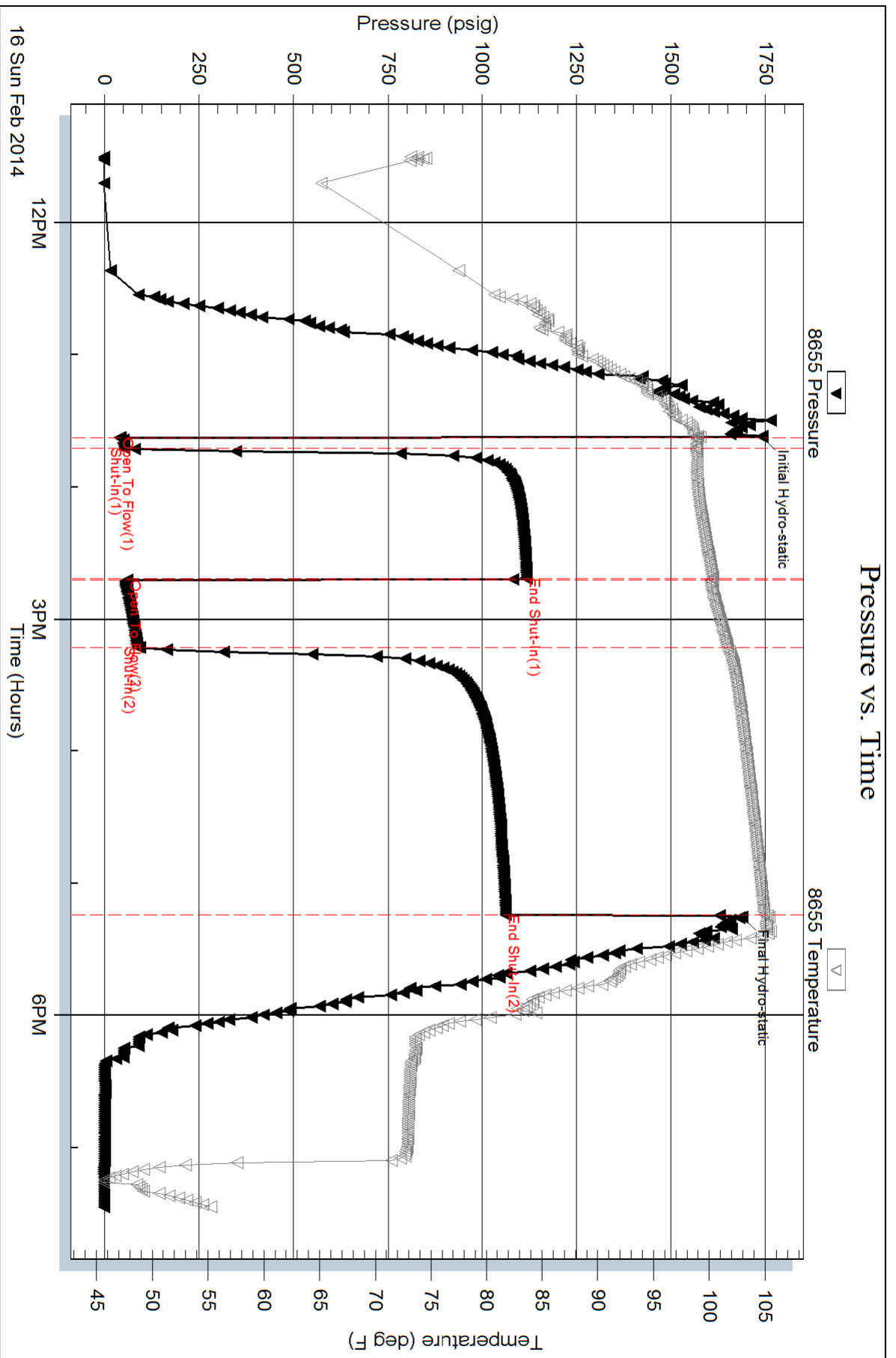
Num Gas Bombs: 0

Serial #:

Laboratory Name:

Laboratory Location:

Recovery Comments: Sampler: 260 PSI, 1500MLO, 500MLW
.37 @ 40 Degrees = 32000 Chlorides
31 @ 50 Degrees = 32 Gravity



Serial #: 8875

Fluid

Samuel Gary Jr. & Associates

Walz Family 1-12

DST Test Number: 1

