



DRILL STEM TEST REPORT

Prepared For: **Shelby Resources LLC**

2717 Canal Boulevard
Suite C
Hays, Kansas 67601

ATTN: Jeremy Schwartz

Nancy 3-17

17/17S/13W/Barton

Start Date: 2014.05.08 @ 08:09:00

End Date: 2014.05.08 @ 12:00:30

Job Ticket #: 18255 DST #: 3

Superior Testers Enterprises LLC
PO Box 138 Great Bend KS 67530
1-800-792-6902

Printed: 2014.05.08 @ 12:13:14



DRILL STEM TEST REPORT

TOOL DIAGRAM

Shelby Resources LLC
 2717 Canal Boulevard
 Suite C
 Hays, Kansas 67601
 ATTN: Jeremy Schwartz

17/17S/13W/Barton
Nancy 3-17
 Job Ticket: 18255 **DST#: 3**
 Test Start: 2014.05.08 @ 08:09:00

Tool Information

Drill Pipe:	Length: 3091.00 ft	Diameter: 3.80 inches	Volume: 43.36 bbl	Tool Weight: 2000.00 lb
Heavy Wt. Pipe:	Length: 0.00 ft	Diameter: 0.00 inches	Volume: 0.00 bbl	Weight set on Packer: 20000.00 lb
Drill Collar:	Length: 328.07 ft	Diameter: 2.25 inches	Volume: 1.61 bbl	Weight to Pull Loose: 75000.00 lb
			<u>Total Volume: 44.97 bbl</u>	Tool Chased 0.00 ft
Drill Pipe Above KB:	22.07 ft			String Weight: Initial 70000.00 lb
Depth to Top Packer:	3424.00 ft			Final 70000.00 lb
Depth to Bottom Packer:	ft			
Interval between Packers:	31.00 ft			
Tool Length:	58.00 ft			
Number of Packers:	2	Diameter: 6.75 inches		

Tool Comments:

Tool Description	Length (ft)	Serial No.	Position	Depth (ft)	Accum. Lengths
Shut-In Tool	5.00			3402.00	
Hydraulic tool	5.00			3407.00	
Jars	5.00			3412.00	
Safety Joint	2.00			3414.00	
Top Packer	5.00			3419.00	
Packer	5.00			3424.00	27.00 Bottom Of Top Packer
Anchor	26.00			3450.00	
Recorder	1.00	6749	Inside	3451.00	
Recorder	1.00	8938	Outside	3452.00	
Bullnose	3.00			3455.00	31.00 Anchor Tool
Total Tool Length:	58.00				



DRILL STEM TEST REPORT

FLUID SUMMARY

Shelby Resources LLC
2717 Canal Boulevard
Suite C
Hays, Kansas 67601
ATTN: Jeremy Schwartz

17/17S/13W/Barton
Nancy 3-17
Job Ticket: 18255 **DST#: 3**
Test Start: 2014.05.08 @ 08:09:00

Mud and Cushion Information

Mud Type: Gel Chem	Cushion Type:	Oil API:	deg API
Mud Weight: 9.00 lb/gal	Cushion Length: ft	Water Salinity:	ppm
Viscosity: 61.00 sec/qt	Cushion Volume: bbl		
Water Loss: 7.60 in ³	Gas Cushion Type:		
Resistivity: ohm.m	Gas Cushion Pressure: psig		
Salinity: 4500.00 ppm			
Filter Cake: 1.00 inches			

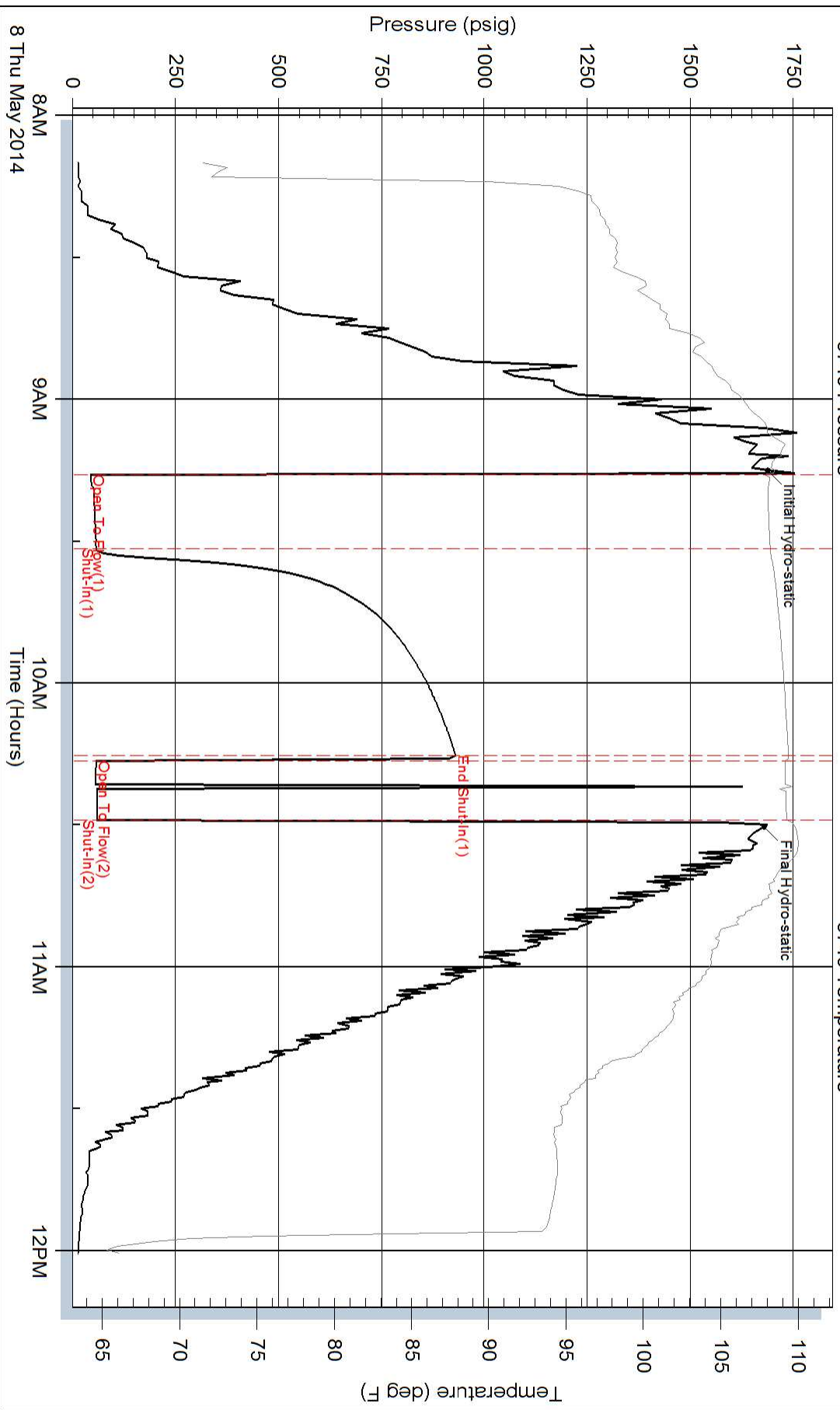
Recovery Information

Recovery Table

Length ft	Description	Volume bbl
15.00	Oily Mud/Oil 30% Mud 70%	0.074
15.00	Mud cut Oil/Mud 5% Oil 95%	0.074

Total Length: 30.00 ft Total Volume: 0.148 bbl
Num Fluid Samples: 0 Num Gas Bombs: 0 Serial #:
Laboratory Name: Laboratory Location:
Recovery Comments:

Pressure vs. Time



Pressure vs. Time

