

**TRILOBITE
TESTING, INC.**

DRILL STEM TEST REPORT

FLUID SUMMARY

Trek AEC, LLC

10-15s-27w Gove co.

155 N. Market STE 710
Wichita, KS 67202

Clifford #2

Job Ticket: 57073

DST#: 1

ATTN: Aaron Young

Test Start: 2014.05.25 @ 23:45:00

Mud and Cushion Information

Mud Type: Gel Chem

Cushion Type:

Oil API:

deg API

Mud Weight: 9.00 lb/gal

Cushion Length: ft

Water Salinity: ppm

Viscosity: 56.00 sec/qt

Cushion Volume: bbl

Water Loss: 7.00 in³

Gas Cushion Type:

Resistivity: 0.00 ohm.m

Gas Cushion Pressure: psig

Salinity: 2600.00 ppm

Filter Cake: 1.00 inches

Recovery Information

Recovery Table

Length ft	Description	Volume bbl
1575.00	Mud 100m	21.046

Total Length: 1575.00 ft Total Volume: 21.046 bbl

Num Fluid Samples: 0 Num Gas Bombs: 0 Serial #:

Laboratory Name: Laboratory Location:

Recovery Comments: Hole in pipe MIS-RUN

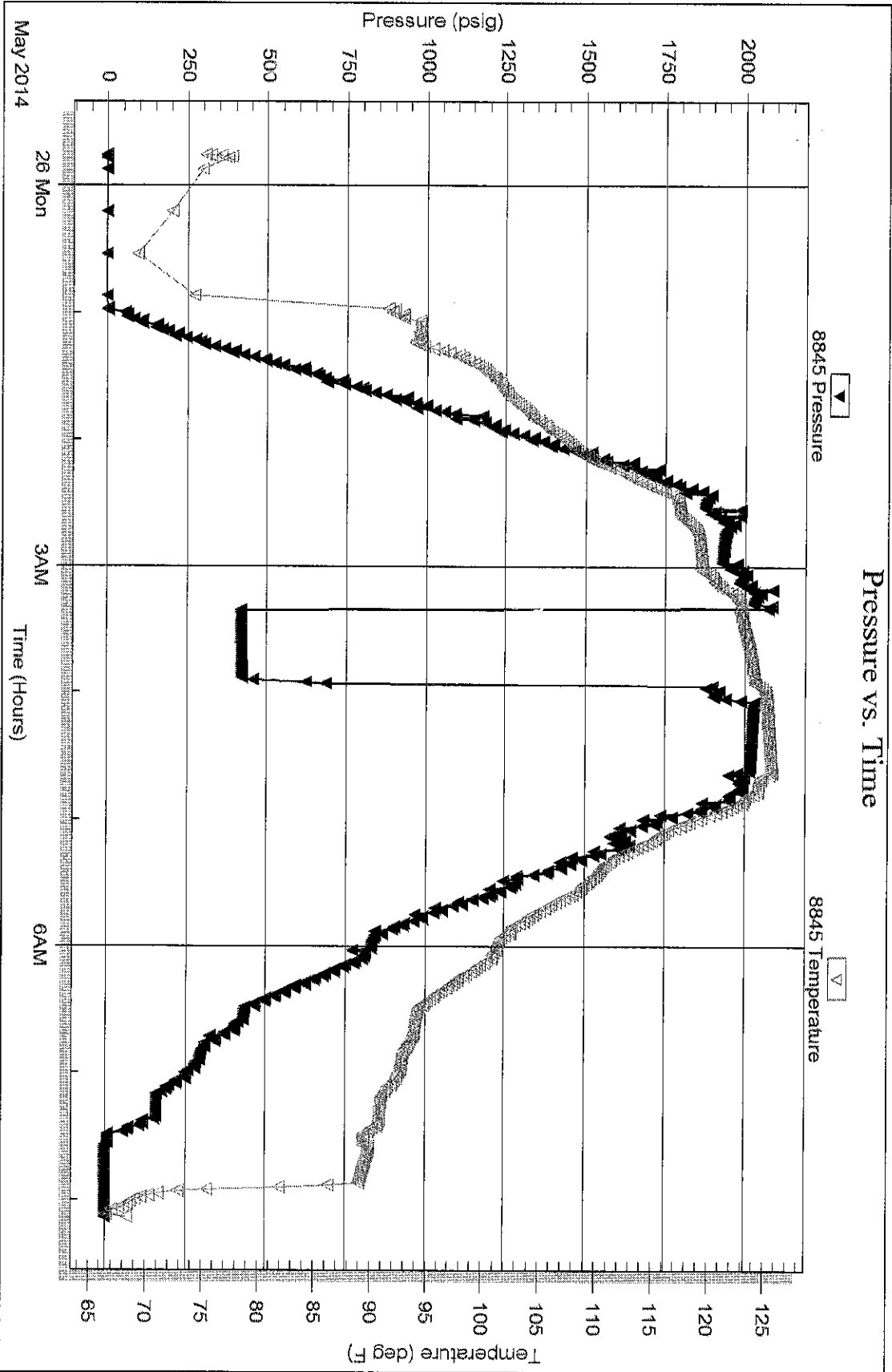
Serial #: 8845

Inside

Trek AEC, LLC

Clifford #2

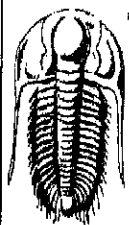
DST Test Number: 1



Tribble Testing, Inc

Ref. No: 57073

Printed: 2014.05.26 @ 10:50:10



**TRILOBITE
TESTING, INC.**

DRILL STEM TEST REPORT

Trek AEC, LLC

10-15s-27w Gove co.

155 N. Market STE 710
Wichita, KS 67202

Clifford #2

Job Ticket: 57074

DST#: 2

ATTN: Aaron Young

Test Start: 2014.05.26 @ 17:23:00

GENERAL INFORMATION:

Formation: **Ft. Scott- Cherokee**

Deviated: No Whipstock: ft (KB)

Time Tool Opened: 19:46:00

Time Test Ended: 02:42:00

Test Type: Conventional Bottom Hole (Reset)

Tester: Samuel Esparza

Unit No: 71

Interval: **4122.00 ft (KB) To 4211.00 ft (KB) (TVD)**

Total Depth: 4211.00 ft (KB) (TVD)

Hole Diameter: 7.88 inches Hole Condition: Good

Reference Elevations: 2425.00 ft (KB)

2417.00 ft (CF)

KB to GR/CF: 8.00 ft

Serial #: 8845 Inside

Press@RunDepth: 65.23 psig @ 4123.00 ft (KB)

Start Date: 2014.05.26

End Date:

2014.05.27

Capacity: 8000.00 psig

Last Calib.: 2014.05.27

Start Time: 17:23:05

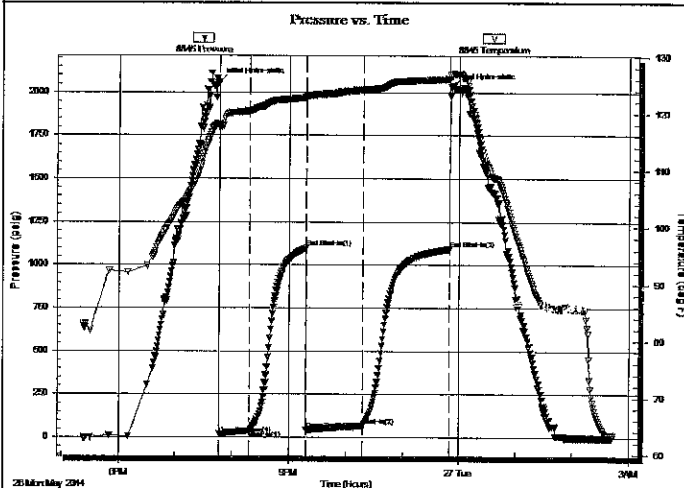
End Time:

02:42:00

Time On Btm: 2014.05.26 @ 19:45:45

Time Off Btm: 2014.05.26 @ 23:51:30

TEST COMMENT: IF: 4" Blow.
IS: No Return.
FF: 10 1/2" Blow.
FS: No Return.



PRESSURE SUMMARY

Time (Min.)	Pressure (psig)	Temp (deg F)	Annotation
0	2058.90	118.08	Initial Hydro-static
1	18.98	117.45	Open To Flow (1)
33	38.19	120.42	Shut-In(1)
92	1098.18	122.76	End Shut-In(1)
93	42.76	122.60	Open To Flow (2)
152	65.23	124.16	Shut-In(2)
245	1093.91	126.05	End Shut-In(2)
246	2029.04	126.43	Final Hydro-static

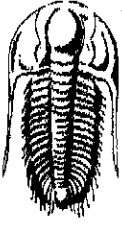
Recovery

Length (ft)	Description	Volume (bbl)
120.00	GOCM 20g 10o 70m	0.64
0.00	180' GIP	0.00

* Recovery from multiple tests

Gas Rates

	Choke (inches)	Pressure (psig)	Gas Rate (Mcf/d)



**TRILOBITE
TESTING, INC.**

DRILL STEM TEST REPORT

FLUID SUMMARY

Trek AEC, LLC

10-15s-27w Gove co.

155 N. Market STE 710
Wichita, KS 67202

Clifford #2

Job Ticket: 57074

DST#: 2

ATTN: Aaron Young

Test Start: 2014.05.26 @ 17:23:00

Mud and Cushion Information

Mud Type: Gel Chem

Cushion Type:

Oil API:

deg API

Mud Weight: 9.00 lb/gal

Cushion Length:

ft

Water Salinity:

ppm

Viscosity: 54.00 sec/qt

Cushion Volume:

bbbl

Water Loss: 7.20 in³

Gas Cushion Type:

Resistivity: 0.00 ohm.m

Gas Cushion Pressure:

psig

Salinity: 2700.00 ppm

Filter Cake: 1.00 inches

Recovery Information

Recovery Table

Length ft	Description	Volume bbl
120.00	GOCM 20g 10o 70m	0.636
0.00	180' GIP	0.000

Total Length: 120.00 ft Total Volume: 0.636 bbl

Num Fluid Samples: 0

Num Gas Bombs: 0

Serial #:

Laboratory Name:

Laboratory Location:

Recovery Comments:

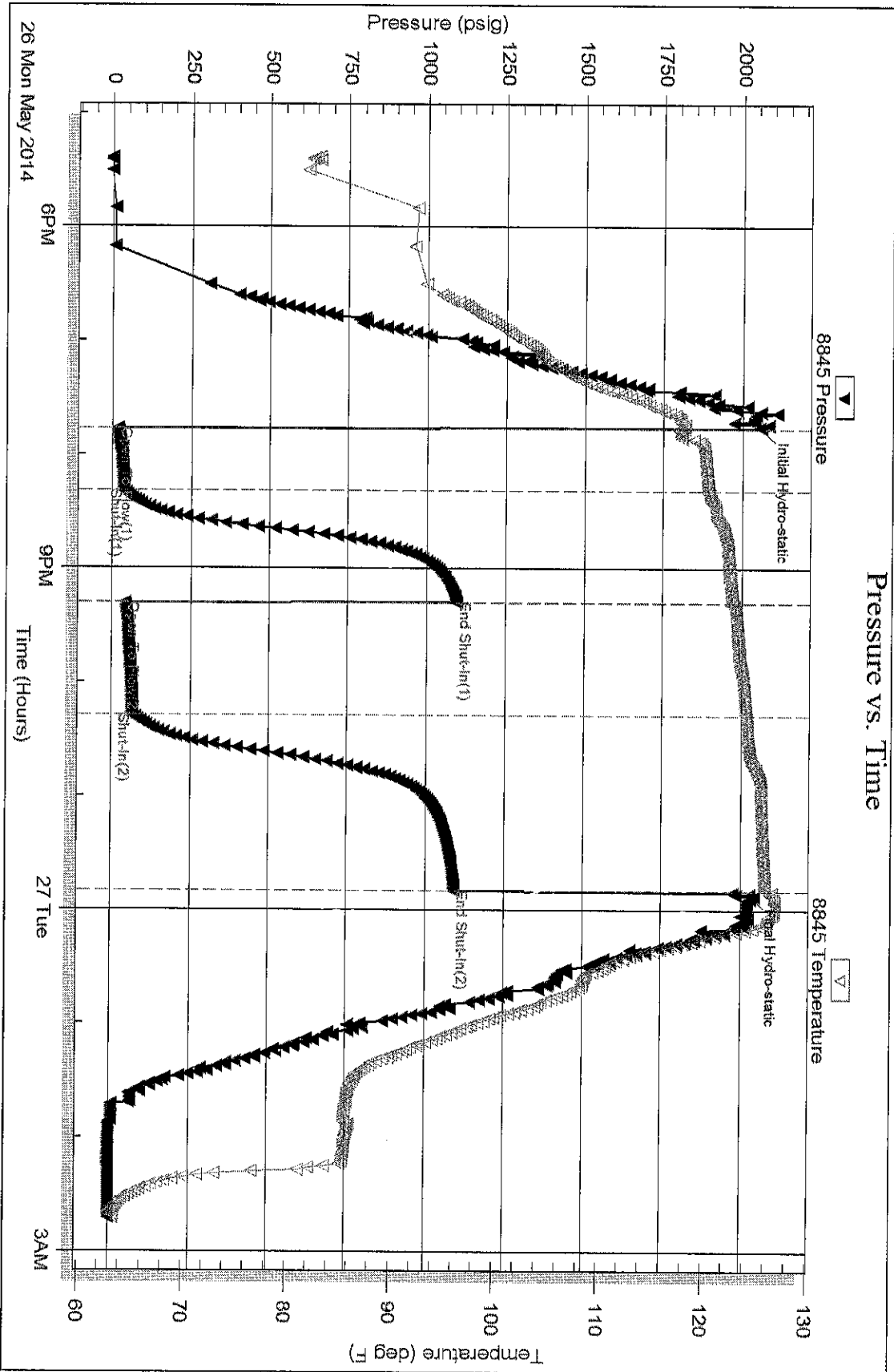
Serial #: 8845

Inside

Trek AEC, LLC

Clifford #2

DST Test Number: 2





**TRILOBITE
TESTING, INC**

DRILL STEM TEST REPORT

FLUID SUMMARY

Trek AEC, LLC

10-15s-27w Gove co.

155 N. Market STE 710
Wichita, KS 67202

Clifford #2

Job Ticket: 57075

DST#: 3

ATTN: Aaron Young

Test Start: 2014.05.27 @ 13:29:00

Mud and Cushion Information

Mud Type: Gel Chem	Cushion Type:	Oil API:	deg API
Mud Weight: 9.00 lb/gal	Cushion Length: ft	Water Salinity:	ppm
Viscosity: 55.00 sec/qt	Cushion Volume: bbl		
Water Loss: 7.60 in ³	Gas Cushion Type:		
Resistivity: 0.00 ohm.m	Gas Cushion Pressure: psig		
Salinity: 3200.00 ppm			
Filter Cake: 1.00 inches			

Recovery Information

Recovery Table

Length ft	Description	Volume bbl
15.00	Mud 100m	0.074

Total Length: 15.00 ft Total Volume: 0.074 bbl

Num Fluid Samples: 0

Num Gas Bombs: 0

Serial #:

Laboratory Name:

Laboratory Location:

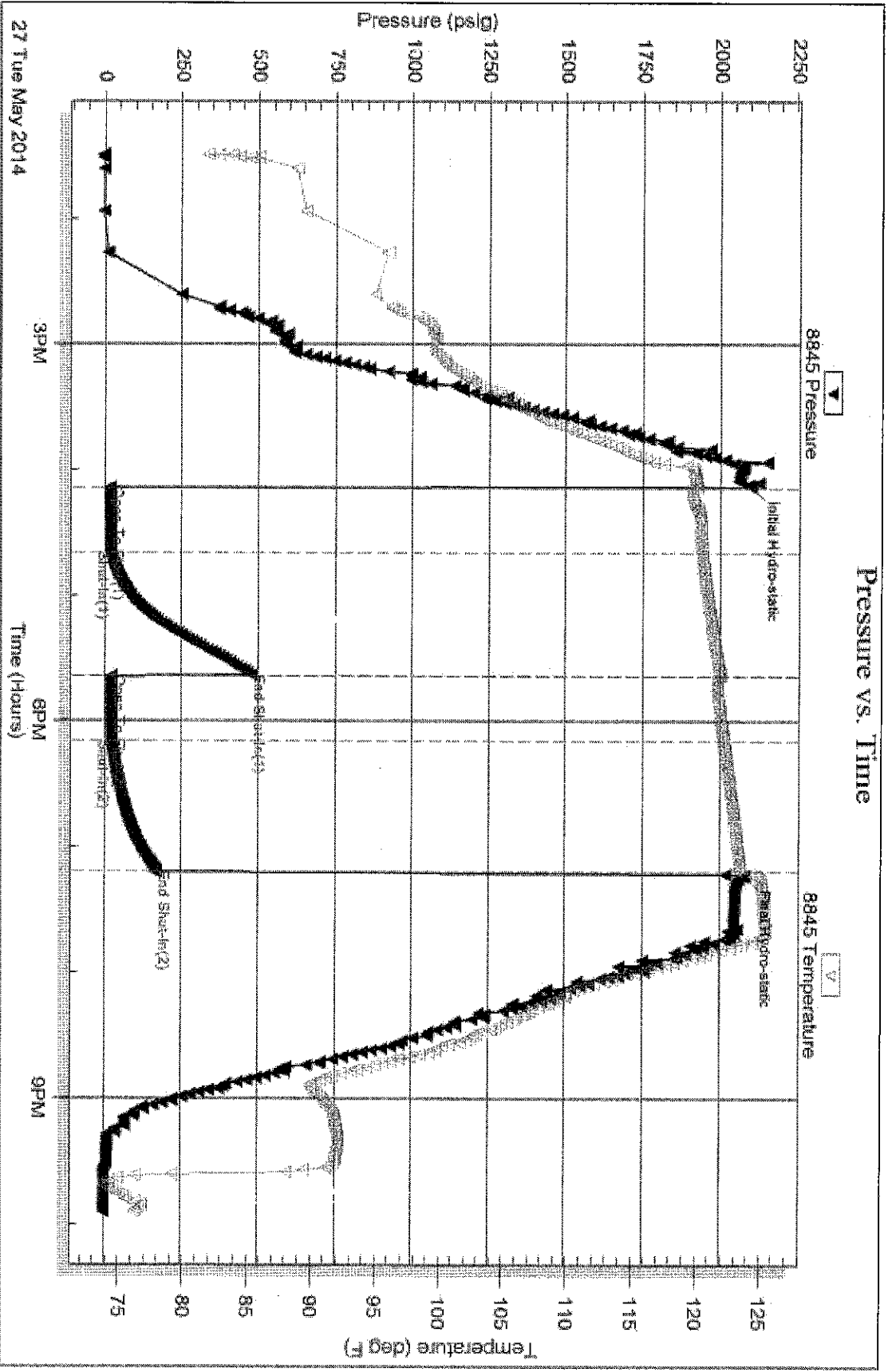
Recovery Comments:

Serial #: 8845

Inside TRAK AEC, LLC

Clifford #2

DST Test Number: 3



Triacetic Testing, Inc

Ref. No: 57075

Printed: 2014.05.28 @ 08:00:32



TRILOBITE TESTING, INC

DRILL STEM TEST REPORT

Trek AEC, LLC
 155 N. Market STE 710
 Wichita, KS 67202
 ATTN: Aaron Young

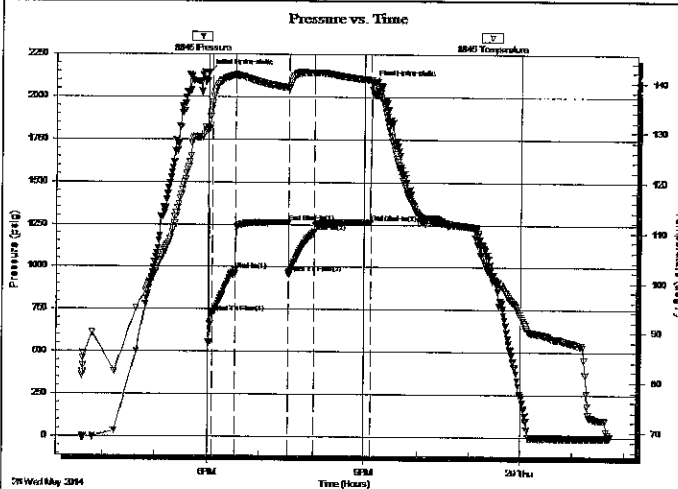
10-15s-27w Gove co.
Clifford #2
 Job Ticket: 57326 **DST#: 4**
 Test Start: 2014.05.28 @ 15:36:00

GENERAL INFORMATION:

Formation: **Miss**
 Deviated: No Whipstock: ft (KB)
 Time Tool Opened: 18:04:30
 Time Test Ended: 01:43:00
 Interval: **4246.00 ft (KB) To 4265.00 ft (KB) (TVD)**
 Total Depth: 4334.00 ft (KB) (TVD)
 Hole Diameter: 7.88 inches Hole Condition: Good
 Test Type: Conventional Straddle (Reset)
 Tester: Samuel Esparza
 Unit No: 71
 Reference Elevations: 2425.00 ft (KB)
 2417.00 ft (CF)
 KB to GR/CF: 8.00 ft

Serial #: 8845 Inside
 Press@RunDepth: 1208.24 psig @ 4247.00 ft (KB) Capacity: 8000.00 psig
 Start Date: 2014.05.28 End Date: 2014.05.29 Last Calib.: 2014.05.29
 Start Time: 15:36:05 End Time: 01:43:00 Time On Btm: 2014.05.28 @ 18:00:30
 Time Off Btm: 2014.05.28 @ 21:07:30

TEST COMMENT: IF: BOB @ 1 min.
 IS: No Return.
 FF: BOB @ 2 in.
 FSI: No Return.



PRESSURE SUMMARY

Time (Min.)	Pressure (psig)	Temp (deg F)	Annotation
0	2140.28	130.76	Initial Hydro-static
4	731.10	135.45	Open To Flow (1)
31	977.81	141.50	Shut-In (1)
93	1262.76	138.93	End Shut-In (1)
93	961.24	138.76	Open To Flow (2)
122	1208.24	142.03	Shut-In (2)
186	1263.36	140.52	End Shut-In (2)
187	2076.14	140.50	Final Hydro-static

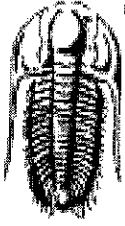
Recovery

Length (ft)	Description	Volume (bbl)
2820.00	MW 10m 90w	38.51

Gas Rates

Choke (inches)	Pressure (psig)	Gas Rate (Mcf/d)

* Recovery from multiple tests



**TRILOBITE
TESTING, INC**

DRILL STEM TEST REPORT

FLUID SUMMARY

Trek AEC, LLC

10-15s-27w Gove co.

155 N. Market STE 710
Wichita, KS 67202

Clifford #2

Job Ticket: 57326

DST#: 4

ATTN: Aaron Young

Test Start: 2014.05.28 @ 15:36:00

Mud and Cushion Information

Mud Type: Gel Chem

Mud Weight: 9.00 lb/gal

Viscosity: 41.00 sec/qt

Water Loss: 10.59 in³

Resistivity: 0.00 ohm.m

Salinity: 3200.00 ppm

Filter Cake: 1.00 inches

Cushion Type:

Cushion Length: ft

Cushion Volume: bbl

Gas Cushion Type:

Gas Cushion Pressure: psig

Oil API: deg API

Water Salinity: 16000 ppm

Recovery Information

Recovery Table

Length ft	Description	Volume bbl
2820.00	MW 10m 90w	38.510

Total Length: 2820.00 ft Total Volume: 38.510 bbl

Num Fluid Samples: 0

Num Gas Bombs: 0

Serial #:

Laboratory Name:

Laboratory Location:

Recovery Comments: Water Salinity: .386 @ 76 degrees= 16,000 ppm

Serial #: 8845

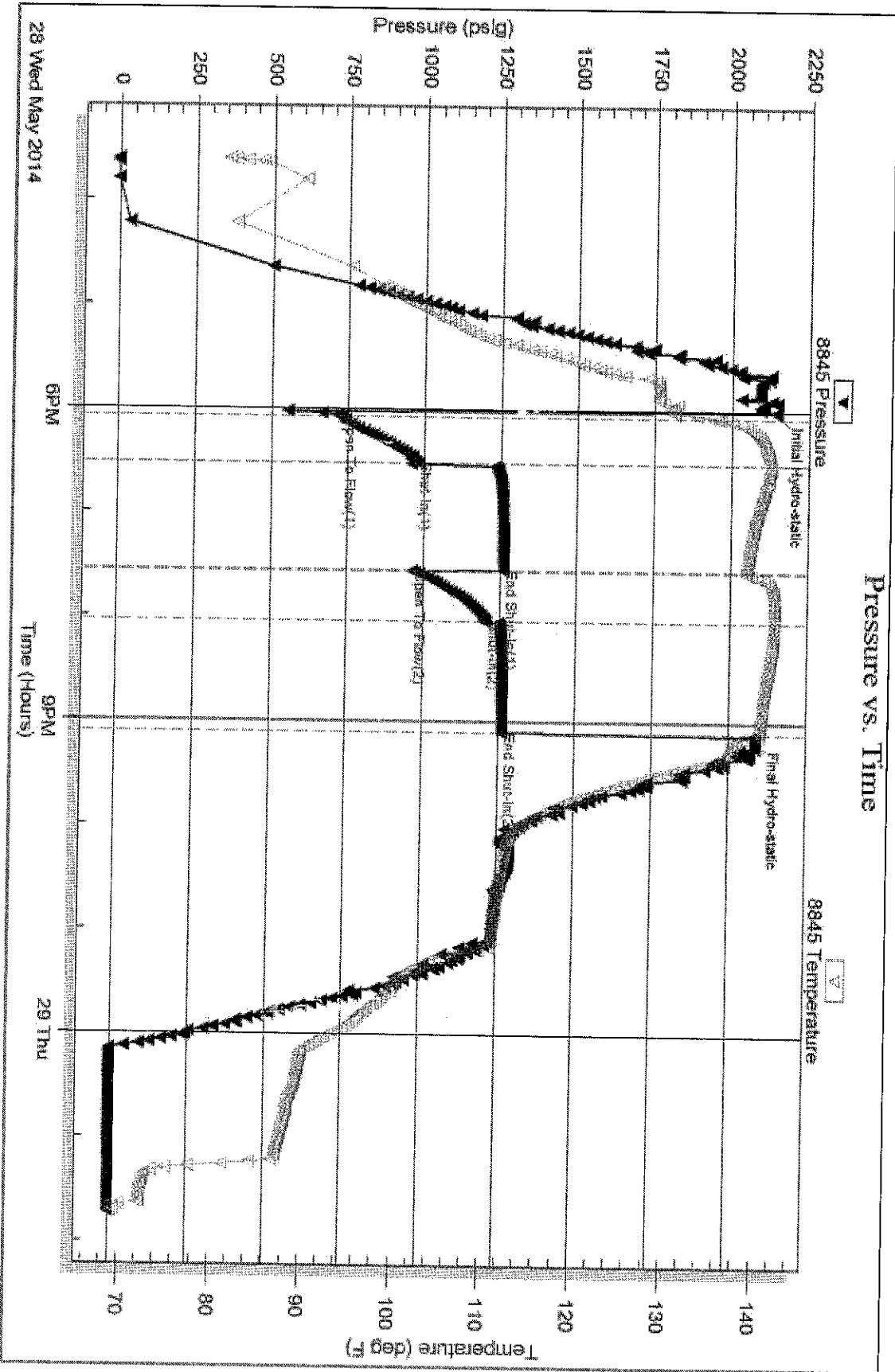
Inside

Trex AEC, LLC

Clifford #2

DST Test Number: 4

Pressure vs. Time

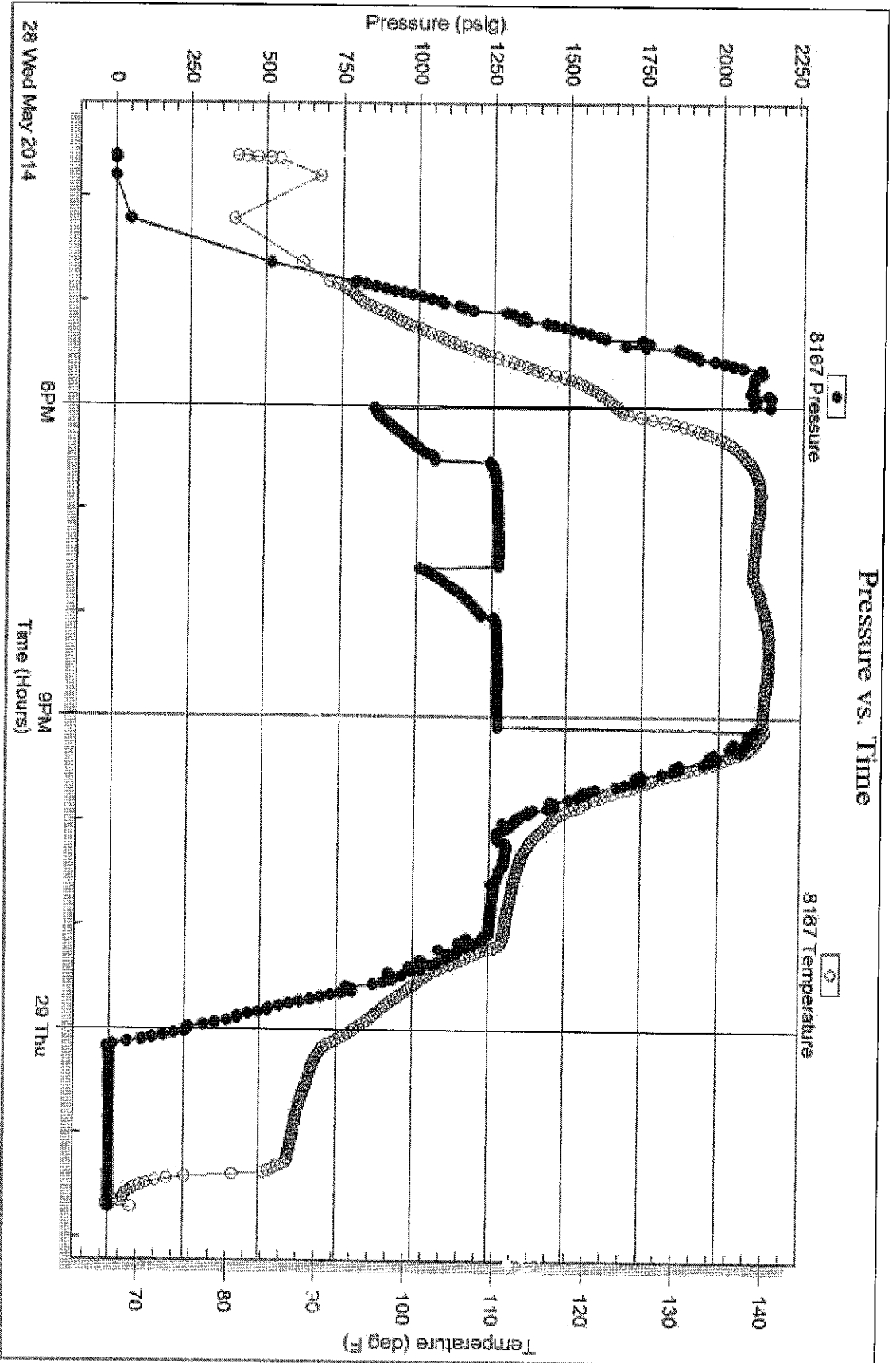


Serial #: 8167

Below (straddle)EC, LLC

Clifford #2

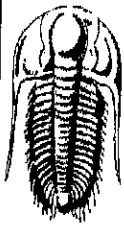
DST Test Number: 4



Trabekle Testing, Inc

Ref. No: 57336

Printed: 2014.05.29 @ 10:54:53



TRILOBITE TESTING, INC.

DRILL STEM TEST REPORT

Trek AEC, LLC

10-15s-27w Gove co.

155 N. Market STE 710
Wichita, KS 67202

Clifford #2

Job Ticket: 57327

DST#: 5

ATTN: Aaron Young

Test Start: 2014.05.29 @ 12:06:00

GENERAL INFORMATION:

Formation: **Mississippian**

Deviated: No Whipstock: ft (KB)

Time Tool Opened: 15:32:30

Time Test Ended: 22:45:30

Test Type: Conventional Straddle (Reset)

Tester: CHUCK SMITH

Unit No: 71

Interval: **4248.00 ft (KB) To 4266.00 ft (KB) (TVD)**

Total Depth: 4266.00 ft (KB) (TVD)

Hole Diameter: 7.88 inches Hole Condition: Good

Reference Elevations: 2425.00 ft (KB)

2417.00 ft (CF)

KB to GR/CF: 8.00 ft

Serial #: 8845

Inside

Press@RunDepth: 1233.70 psig @ 4249.00 ft (KB)

Start Date: 2014.05.29

End Date:

2014.05.29

Capacity: 8000.00 psig

Start Time: 12:06:05

End Time:

22:45:30

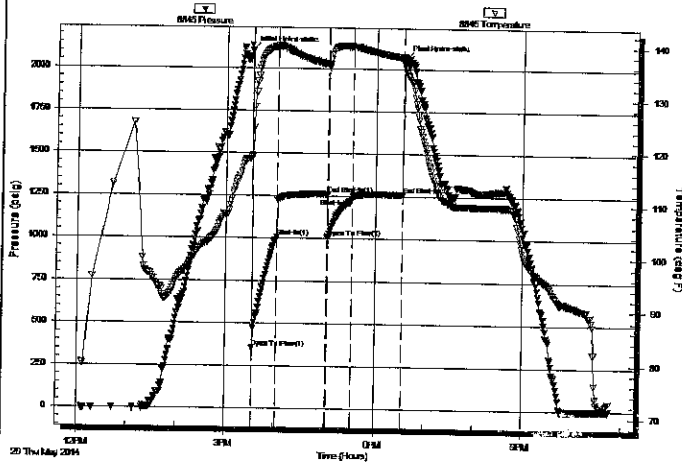
Last Calib.: 2014.05.29

Time On Btm: 2014.05.29 @ 15:30:30

Time Off Btm: 2014.05.29 @ 18:35:00

TEST COMMENT: 30- B.O.B. @ 1 1/4 min.
60- No return.
30- B.O.B. @ 2 min.
60- No return.

Pressure vs. Time



PRESSURE SUMMARY

Time (Min.)	Pressure (psig)	Temp (deg F)	Annotation
0	2102.04	119.01	Initial Hydro-static
2	355.40	118.95	Open To Flow (1)
31	1009.51	139.82	Shut-In(1)
92	1262.99	136.56	End Shut-In(1)
92	1009.66	136.38	Open To Flow (2)
122	1233.70	139.84	Shut-In(2)
182	1264.36	137.87	End Shut-In(2)
185	2062.14	135.82	Final Hydro-static

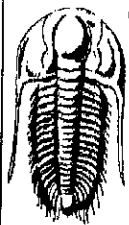
Recovery

Length (ft)	Description	Volume (bbl)
0.00	RW: .310 @ 75 Degrees F = 19000 PPM	0.00
115.00	MW 25m 75w	0.57
2505.00	MW 20m 80w	35.14
175.00	M 100m	2.45

* Recovery from multiple tests

Gas Rates

	Choke (inches)	Pressure (psig)	Gas Rate (Mcf/d)



**TRIOBITE
TESTING, INC.**

DRILL STEM TEST REPORT

FLUID SUMMARY

Trek AEC, LLC

10-15s-27w Gove co.

155 N. Market STE 710
Wichita, KS 67202

Clifford #2

Job Ticket: 57327

DST#: 5

ATTN: Aaron Young

Test Start: 2014.05.29 @ 12:06:00

Mud and Cushion Information

Mud Type: Gel Chem

Cushion Type:

Oil API:

deg API

Mud Weight: 9.00 lb/gal

Cushion Length:

ft

Water Salinity:

19000 ppm

Viscosity: 70.00 sec/qt

Cushion Volume:

bbf

Water Loss: 7.60 in³

Gas Cushion Type:

Resistivity: 0.00 ohm.m

Gas Cushion Pressure:

psig

Salinity: 3300.00 ppm

Filter Cake: 1.00 inches

Recovery Information

Recovery Table

Length ft	Description	Volume bbf
0.00	RW: .310 @ 75 Degrees F = 19000 PPM	0.000
115.00	MW 25m 75w	0.566
2505.00	MW 20m 80w	35.139
175.00	M 100m	2.455

Total Length: 2795.00 ft

Total Volume: 38.160 bbf

Num Fluid Samples: 0

Num Gas Bombs: 0

Serial #:

Laboratory Name:

Laboratory Location:

Recovery Comments:

Serial #: 8845

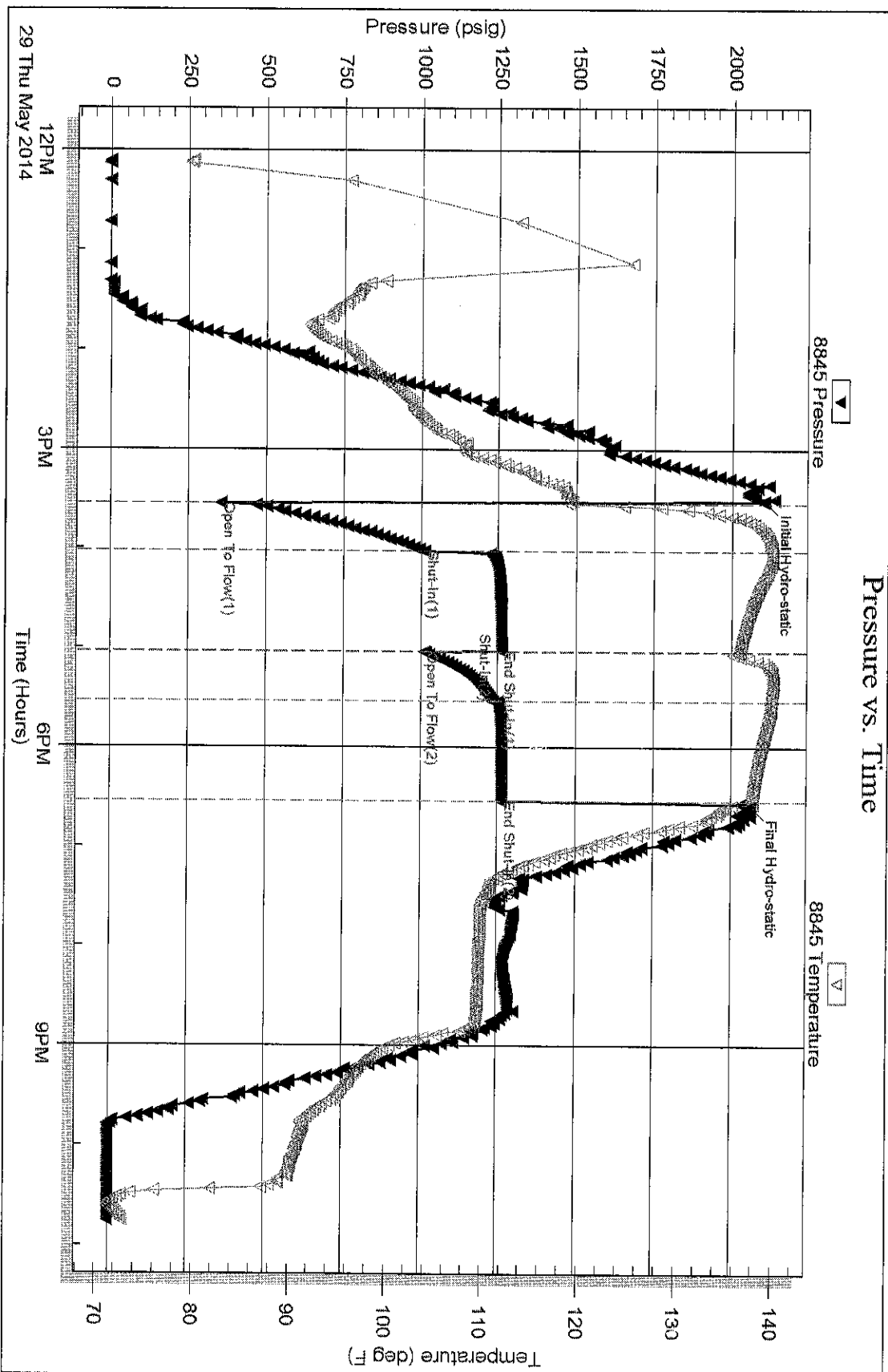
Inside

Trek AEC, LLC

Offroad #2

DST Test Number: 5

Pressure vs. Time



Serial #: 8167

Below (Straddling) EC, LLC

Clifford #2

DST Test Number: 5

