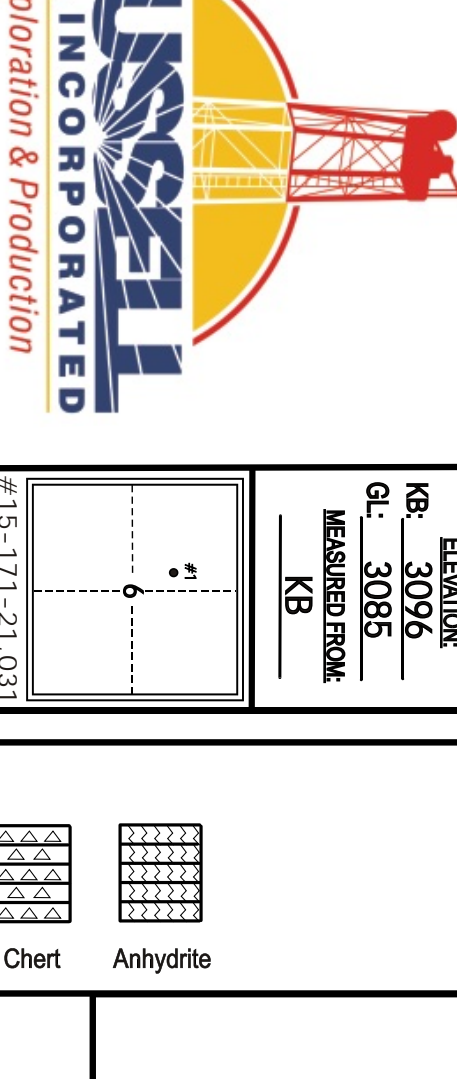


# KITT NOAH

PETROLEUM GEOLOGIST

Kansas License #229



## GEOLOGIST'S REPORT

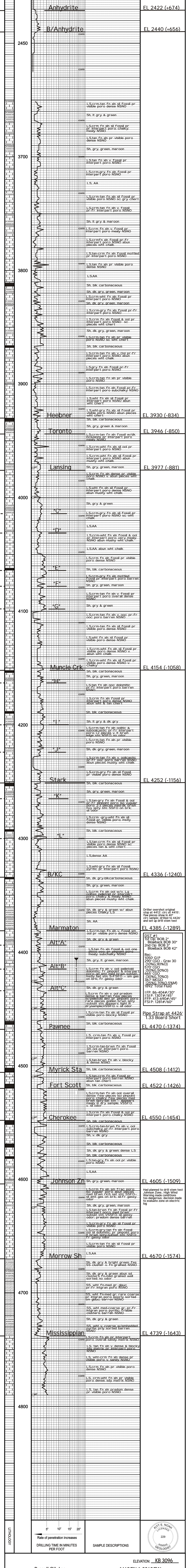
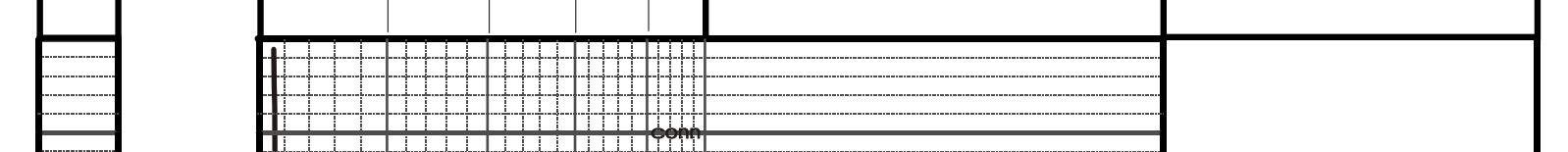
DRILLING TIME AND SAMPLE LOG

OPERATOR: Russell Oil, Inc.  
 LEASE: Edwards FG Unit WELL NO: #1  
 LOCATION: 1460'FN & 2260'FW  
 SEC: 6 TWP: 16S RING: 34W  
 COUNTY: Scott STATE: Kansas

FORMATION	TOP	LOG	CONTRACTOR	LOG
ANhydrite	2422 (4674)	DULUM	H2 Drilling Rig #1	3-20-2014
B/Anhydrite	2440 (4656)	RTD	COM: 3-12-2014	COMPL: 3-20-2014
Heebner	3930 (4834)	RTD	RTD: 4/79	LTD: 4/79
Toronto	3940 (4830)	RTD	SAMPLES SAVED FROM: 3650 TO TD	
STARK	3977 (4817)	RTD	SAMPLES EXAMINED FROM: 3650 TO TD	
B/KC	4252 (4156)	RTD	GEOLOGICAL SUPERVISION FROM: 3440 TO TD	
Marmaton	4336 (4120)	RTD	MUD UP: 3450 MUD TYPE: chemical	
Pawnee	4385 (4129)	RTD	DRIPL STEM TESTS TAKEN: 1	
Cherokee	4470 (4137)	RTD	ITILIBITE - Jace McKinney	
MISSISSIPPIAN	4550 (4145)	RTD	SURVEYS: Pioneer Energy Services	
LTD	4790 (4169)	RTD	Dual Compensated Porosity	
LTD	4798 (4169)	RTD	Microlog	
LTD	4798 (4169)	RTD	Bohrer Compensated Sonic	

ELEVATION: KB 3096  
 G.L. 3085  
 MEASURED FROM: KB

### LEGEND



Driller overshot original stop at 4412'; circ at 4415'; few pieces show in 40' circ sample; drilled to 4426' and set up drill stem test

**DST #1**  
 1st Op: BOB 2'  
 Blowback BOB 30'  
 2nd Op: BOB 3'  
 Blowback BOB 42'

Rec:  
 1050' GIP  
 290' CGO - Grav 30 (10%G,90%O)  
 570' CGO (50%G,50%O)  
 665' CGO (30%G,70%O)  
 367' MCGO (25%G,70%O,5%M)  
 1892' Total Fluid

IFP: 86-404#/30"  
 ISP: 1307#/45"  
 FFP: 413-690#/45"  
 FSP: 1281#/60"

Pipe Strap at 4426'  
 1.33 Board Short

Had planned to drill stem test Johnson Zone. High Wind Warning made conditions too dangerous; decision made to evaluate zone on electric log



OPERATOR: Russell Oil, Inc. LOCATION: 1460'FN & 2260'FW  
 LEASE: Edwards FG Unit WELL NO: #1 SEC: 6 TWP: 16S RING: 34W  
 API: 15-171-21.031 FIELD: Wildcat COUNTY: Scott STATE: Kansas

ELEVATION: KB 3096