

**TRILOBITE  
TESTING, INC.**

## DRILL STEM TEST REPORT

Prepared For: **American Warrior, Inc**

P.O.Box 399  
Garden City, Kansas 67846

ATTN: Frank Mize

**28-31s-9w Harper,Ks**

**Pollock #1-24**

Start Date: 2010.09.08 @ 10:07:41

End Date: 2010.09.08 @ 16:32:11

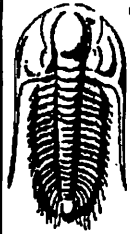
Job Ticket #: 36948                      DST #: 1

**ORIGINAL**

Trilobite Testing, Inc

PO Box 1733 Hays, KS 67601

ph: 785-625-4778 fax: 785-625-5620



**TRILOBITE  
TESTING, INC**

## DRILL STEM TEST REPORT

American Warrior, Inc  
P.O.Box 399  
Garden City, Kansas 67846  
ATTN: Frank Mize

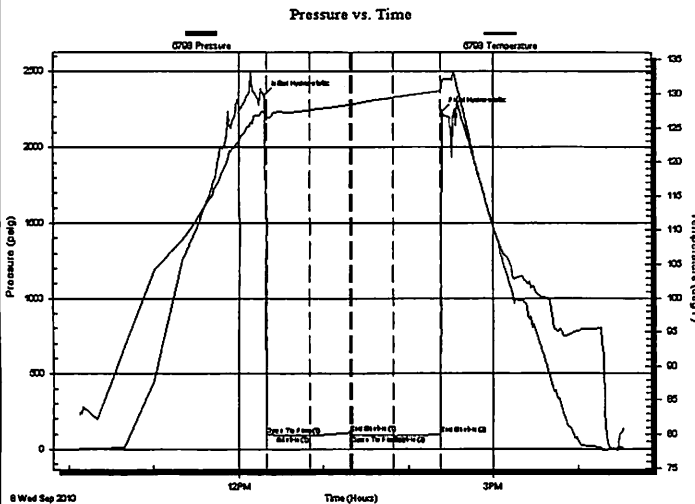
**Pollock #1-24**  
**28-31s-9w Harper, Ks**  
Job Ticket: 36948      DST#: 1  
Test Start: 2010.09.08 @ 10:07:41

### GENERAL INFORMATION:

Formation: **Mississippi**  
Deviated: No      Whipstock:      ft (KB)  
Time Tool Opened: 12:19:41  
Time Test Ended: 16:32:11  
Test Type: Conventional Bottom Hole  
Tester: Jerry Adams  
Unit No: 45  
Interval: 4611.00 ft (KB) To 4652.00 ft (KB) (TVD)  
Reference Elevations: 1405.00 ft (KB)  
Total Depth: 4652.00 ft (KB) (TVD)      1395.00 ft (CF)  
Hole Diameter: 7.88 inches      Hole Condition: Fair      KB to GR/CF: 10.00 ft

**Serial #: 6798**      Inside  
Press@RunDepth: 88.28 psig @ 4612.00 ft (KB)      Capacity: 8000.00 psig  
Start Date: 2010.09.08      End Date: 2010.09.08      Last Calib.: 2010.09.08  
Start Time: 10:07:42      End Time: 16:32:11      Time On Btm: 2010.09.08 @ 12:18:11  
Time Off Btm: 2010.09.08 @ 14:23:41

**TEST COMMENT:** IF:Weak 1/4" blow . Dead in 21 mins.  
IS:No blow .  
FF:No blow .  
FS:No blow .



### PRESSURE SUMMARY

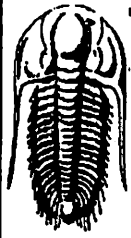
Time (Min.)	Pressure (psig)	Temp (deg F)	Annotation
0	2346.82	127.02	Initial Hydro-static
2	94.30	126.26	Open To Flow (1)
32	93.32	127.55	Shut-In(1)
61	106.56	128.41	End Shut-In(1)
62	90.28	128.44	Open To Flow (2)
92	88.28	129.45	Shut-In(2)
125	97.13	130.39	End Shut-In(2)
126	2238.42	132.05	Final Hydro-static

**Recovery**

Length (ft)	Description	Volume (bbl)
120.00	Drilling Mud - 100% m	1.68

### Gas Rates

Choke (inches)	Pressure (psig)	Gas Rate (Mcf/d)



**TRILOBITE  
TESTING, INC**

# DRILL STEM TEST REPORT

**TOOL DIAGRAM**

American Warrior, Inc  
 P.O.Box 399  
 Garden City, Kansas 67846  
 ATTN: Frank Mize

**Pollock #1-24**  
**28-31s-9w Harper, Ks**  
 Job Ticket: 36948      DST#: 1  
 Test Start: 2010.09.08 @ 10:07:41

**Tool Information**

Drill Pipe:	Length: 4613.00 ft	Diameter: 3.80 inches	Volume: 64.71 bbl	Tool Weight: 2500.00 lb
Heavy Wt. Pipe:	Length: 0.00 ft	Diameter: 0.00 inches	Volume: 0.00 bbl	Weight set on Packer: 20000.00 lb
Drill Collar:	Length: 0.00 ft	Diameter: 0.00 inches	Volume: 0.00 bbl	Weight to Pull Loose: 90000.00 lb
			<u>Total Volume: 64.71 bbl</u>	Tool Chased 0.00 ft
Drill Pipe Above KB:	30.00 ft			String Weight: Initial 70000.00 lb
Depth to Top Packer:	4611.00 ft			Final 70000.00 lb
Depth to Bottom Packer:	ft			
Interval between Packers:	41.00 ft			
Tool Length:	69.00 ft			
Number of Packers:	2	Diameter: 6.75 inches		

**Tool Comments:**

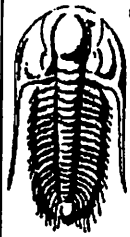
Hit bridge 25 stds off bottom. Tool opened momentarily.

**Tool Description**

**Length (ft)    Serial No.    Position    Depth (ft)    Accum. Lengths**

Shut In Tool	5.00			4588.00	
Hydraulic tool	5.00			4593.00	
Jars	5.00			4598.00	
Safety Joint	3.00			4601.00	
Packer	5.00			4606.00	28.00      Bottom Of Top Packer
Packer	5.00			4611.00	
Stubb	1.00			4612.00	
Recorder	0.00	6798	Inside	4612.00	
Recorder	0.00	8367	Outside	4612.00	
Perforations	37.00			4649.00	
Bullnose	3.00			4652.00	41.00      Bottom Packers & Anchor

**Total Tool Length:    69.00**



**TRILOBITE  
TESTING, INC**

# DRILL STEM TEST REPORT

**FLUID SUMMARY**

American Warrior, Inc  
P.O.Box 399  
Garden City, Kansas 67846  
ATTN: Frank Mize

**Pollock #1-24**  
**28-31s-9w Harper, Ks**  
Job Ticket: 36948      DST#: 1  
Test Start: 2010.09.08 @ 10:07:41

## Mud and Cushion Information

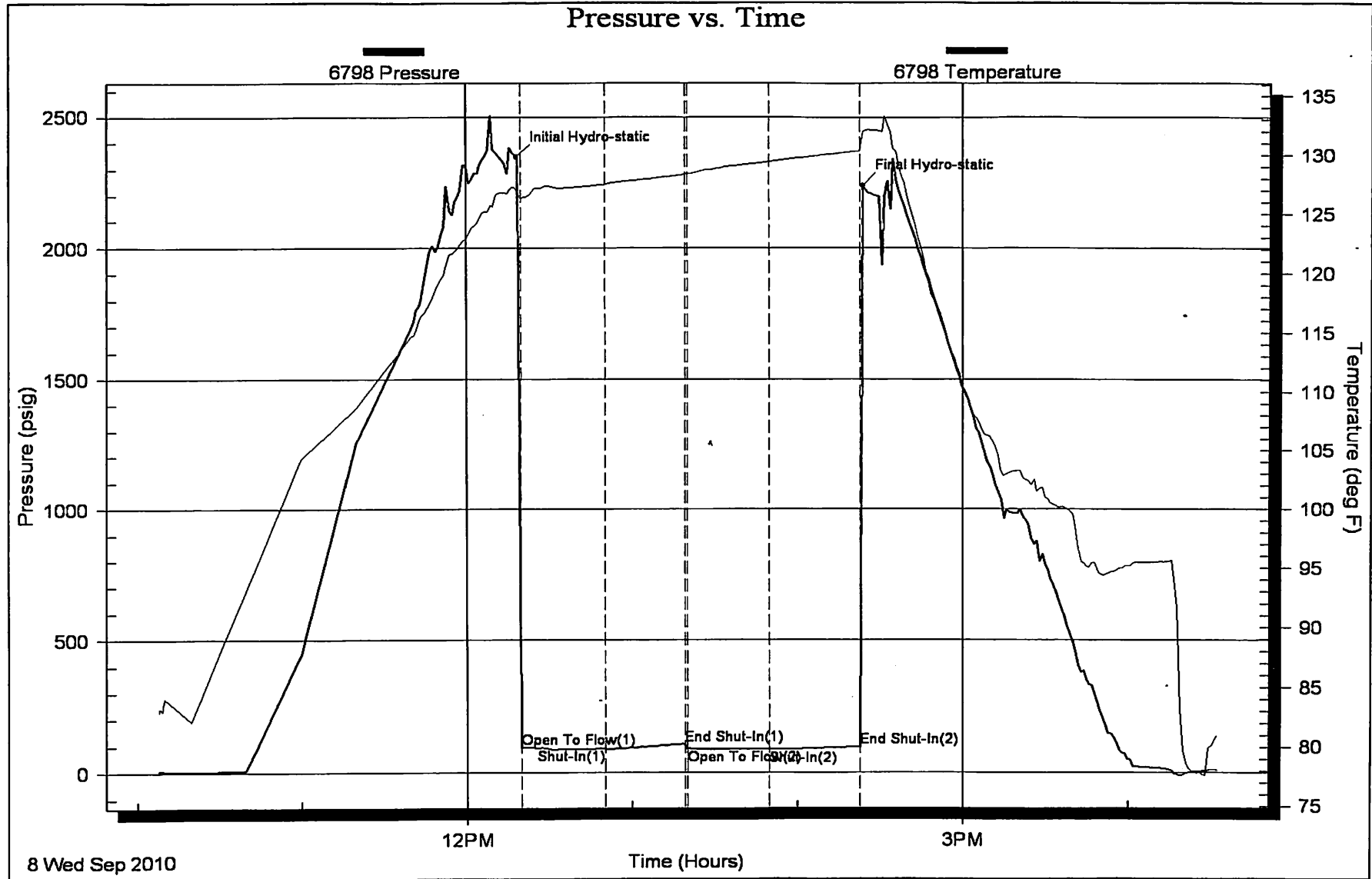
Mud Type: Gel Chem	Cushion Type:	Oil API:	deg API
Mud Weight: 9.00 lb/gal	Cushion Length: ft	Water Salinity:	ppm
Viscosity: 48.00 sec/qt	Cushion Volume: bbl		
Water Loss: 12.38 in <sup>3</sup>	Gas Cushion Type:		
Resistivity: 0.00 ohm.m	Gas Cushion Pressure: psig		
Salinity: 10000.00 ppm			
Filter Cake: 0.21 inches			

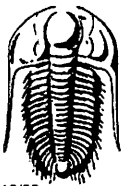
## Recovery Information

Recovery Table

Length ft	Description	Volume bbl
120.00	Drilling Mud 100%m	1.683

Total Length: 120.00 ft      Total Volume: 1.683 bbl  
Num Fluid Samples: 0      Num Gas Bombs: 0      Serial #: none  
Laboratory Name:      Laboratory Location:  
Recovery Comments:





# TRILOBITE TESTING INC.

P.O. Box 1733 • Hays, Kansas 67601

RECEIVED  
SEP 16 2010

## Test Ticket

No. 36948

10/08

BY: \_\_\_\_\_

Well Name & No. Pollock #1-24 Test No. 1 Date 9-8-10  
 Company American Warrior Elevation 1405 KB 1395 GL  
 Address P.O. Box 399 Garden City, Kansas 67846  
 Co. Rep / Geo. Frank Mize Rig Val #5  
 Location: Sec. 28 Twp. 36S Rge. 9W Co. Harper State Ks

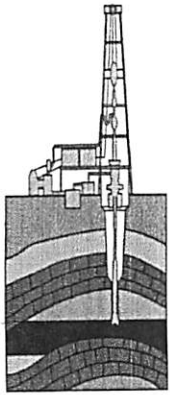
Interval Tested 4611-4652 Zone Tested Mississippi  
 Anchor Length 41 Drill Pipe Run 4613 Mud Wt. 9.3  
 Top Packer Depth 4606 Drill Collars Run 0 Vis 48  
 Bottom Packer Depth 4611 Wt. Pipe Run 0 WL 12.4  
 Total Depth 4652 Chlorides 10,000 ppm System LCM 0  
 Blow Description IF: Weak 1/4" blow. Dead in 21 mins.  
ISI: No blow.  
FF: No blow.  
FST: No blow.

Rec	Feet of	%gas	%oil	%water	%mud
<u>120</u>	<u>Drilling Mud</u>			<u>100</u>	
Rec	Feet of	%gas	%oil	%water	%mud
Rec	Feet of	%gas	%oil	%water	%mud
Rec	Feet of	%gas	%oil	%water	%mud

Rec Total 120 BHT 130 Gravity N/A API RW N/A @ — ° F Chlorides — ppm

(A) Initial Hydrostatic 2347  Test 1225' T-On Location 0830  
 (B) First Initial Flow 94  Jars 250' T-Started 1007  
 (C) First Final Flow 93  Safety Joint 75' T-Open 1219  
 (D) Initial Shut-In 107  Circ Sub \_\_\_\_\_ T-Pulled 1423  
 (E) Second Initial Flow 90  Hourly Standby \_\_\_\_\_ T-Out 1632  
 (F) Second Final Flow 88  Mileage 130 R.T. 162.50 Comments Hit bridge 25 studs  
 (G) Final Shut-In 97  Sampler \_\_\_\_\_ off bottom. Tool opened  
 (H) Final Hydrostatic 2238  Straddle \_\_\_\_\_ momentarily.  
 Shale Packer \_\_\_\_\_  Ruined Shale Packer \_\_\_\_\_  
 Extra Packer \_\_\_\_\_  Ruined Packer 260'  
 Extra Recorder \_\_\_\_\_  Extra Copies \_\_\_\_\_  
 Initial Open 30  Day Standby \_\_\_\_\_ Sub Total 260'  
 Initial Shut-In 30  Accessibility \_\_\_\_\_ Total 1972.50  
 Final Flow 30  
 Final Shut-In 30  
 Sub Total 1712.50

Approved By Frank Mize Our Representative Jerry Adams Thank You.  
 Trilobite Testing Inc. shall not be liable for damaged or any kind of the property or personnel of the one for whom a test is made, or for any loss suffered or sustained, directly or indirectly, through the use of its equipment, or its statements or opinion concerning the results of any test. Tools lost or damaged in the hole shall be paid for at cost by the party for whom the test is made.



# American Warrior, Inc.



## GEOLOGICAL REPORT DRILLING TIME & SAMPLE LOG

COMPANY American Warrior, Inc.  
 LEASE Pollock #1-24  
 FIELD Wildcat  
 LOCATION 2,035' FNL & 341' FWL  
 SEC 24 TWSP 33S RGE 8W  
 COUNTY Harper STATE KS

ELEVATION  
 K.B. 1395  
 G.L. 1384  
 DEPTH MEASURED FROM KB  
 Log \_\_\_\_\_ Drilling

CASING  
 Conductor NONE  
 Surface 8 5/8" @ 350'  
 Production NONE

CONTRACTOR Val Drilling, Rig #5  
 SPUD 9-3-10 COMP 9-8-10  
 SAMPLES SAVED FROM 3200' TO RTD

Electric Logs  
NONE

REPORT PREPARED BY FRANK S. MIZE/GEOLOGIST

FORMATION	SAMPLE	E LOG	DATUM
Heebner	3457		-2062
Stalnaker	3816		-2421
Kansas City	4036		-2641
Stark	4179		-2784
Swope	4203		-2808
Hertha	4229		-2834
BKC	4260		-2865
Marmaton	4298		-2903
Fort Scott	4451		-3056
Cherokee	4457		-3062
Mississippian	4607		-3213
RTD	4652		-3257

A. ELOG	B. ELOG	C. DT/SMP
-2054	-2048	
-2425	-2396	
-2631	-2629	-2552
-2776	-2771	-2700
-2799	-2796	-2720
-2826	-2822	-2747
-2855	-2851	-2780
-2895	-2894	-2819
-3043	-3042	-2966
-3050	-3048	-2975
-3203	-3201	-3137

### REFERENCE WELLS

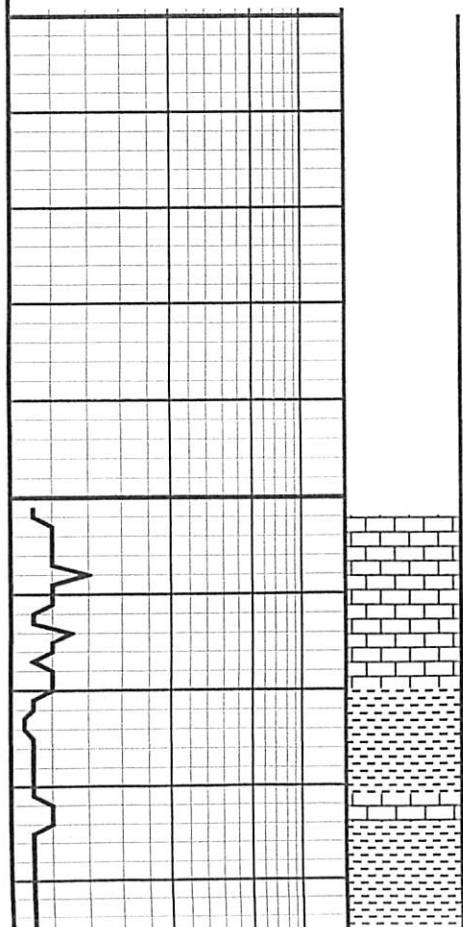
- A. C SW SW 24-33S-8W Anadarko Prod, Law 'A' #1
- B. C NE SW 24-33S-8W McCoy, Dalrymple 'D' #1
- C. SE SE 23-33S-8W Pintail Pet, Reynolds-Engle #1-23



1	2	3	4	5	10	15
DRILLING TIME MINUTES/FOOT						



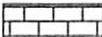
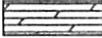


Due to the low structural position of this well at the top of the Mississippian, and the negative results of DST #1, it was recommended that this well be plugged and abandoned.

*Frank S. Mize, Geologist #365*



3200

3250

-  SHALE
-  SANDSTONE
-  LIMESTONE
-  DOLOMITE
-  HALITE
-  ANHYDRITE/GYPSUM

Limestone: gray to brown, medium crystalline, dense, no visible porosity, no show

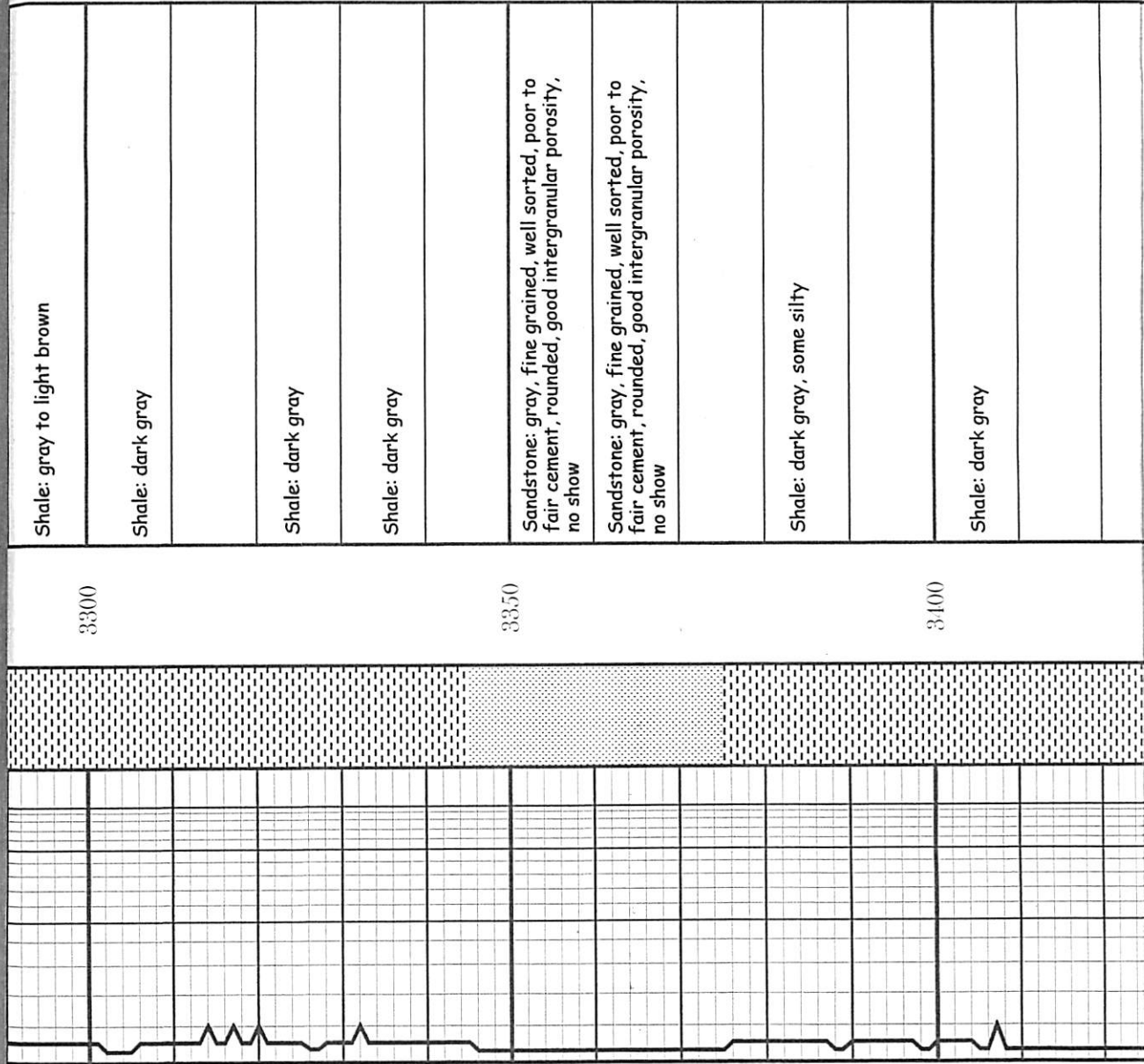
Limestone: gray to brown, medium crystalline, dense, no visible porosity, no show

Shale: gray to black

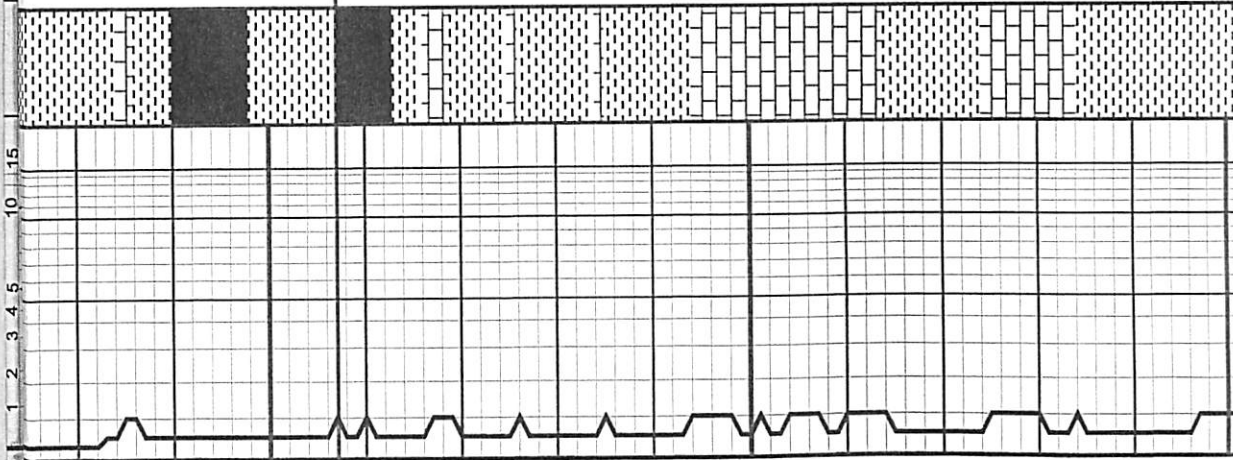
Limestone: off white, fine grained/micritic, dense, no visible porosity, no show

Shale: gray to light brown





15  
10  
5  
1  
2  
3  
4



3450

3500

3550

Shale: dark gray to gray

Shale: black, fissile

Limestone: dirty beige to light brown, medium crystalline, argillaceous, no visible porosity, no show

Shale: gray to black

Shale: gray

Limestone: off white, highly chalky to light brown, argillaceous, no visible porosity, no show

Shale: gray to black

Limestone: off white to light brown, medium crystalline, dense, fair intercrystalline porosity, no show, trace milky dark gray chert

Limestone: beige to gray, medium crystalline, fair intercrystalline porosity, no show

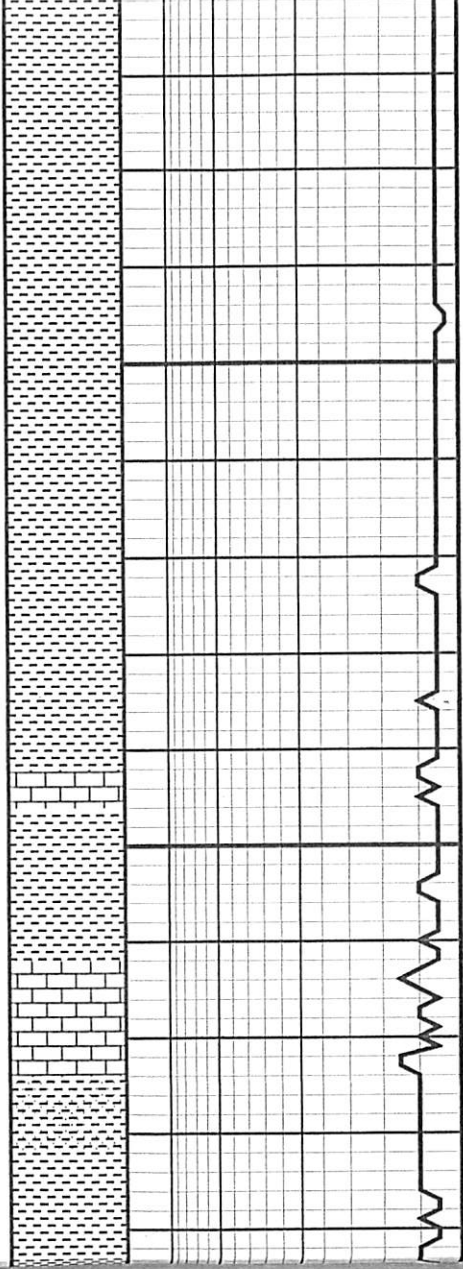
Shale: gray to black

Heebner 3457 -2062

Shale: gray to dark gray, calcareous
Shale: gray
Siltstone: light brown, very fine grained
Limestone: light brown to beige, medium crystalline, dense, some argillaceous, no show
Shale: gray
Limestone: light brown to beige, medium crystalline, dense, some argillaceous, no show
Shale: gray
Limestone: light brown to beige, medium crystalline, dense, some argillaceous, no show
Shale: gray
Shale: gray
Shale: gray
Shale: gray

3650

3600



3700

Shale: gray

Shale: gray to light brown

3750

Shale: gray

3800

DRILLING TIME  
MINUTES/FOOT  
1 2 3 4 5 10 15



Limestone: light brown, medium crystalline, dense, no visible porosity, no show

Sandstone: gray to light brown, fine to medium grained, well sorted, fair calcareous cement, fair to good intergranular porosity, no show

Sandstone: gray to light brown, fine to medium grained, well sorted, fair calcareous cement, fair to good intergranular porosity, no show

Shale: gray

Shale: gray

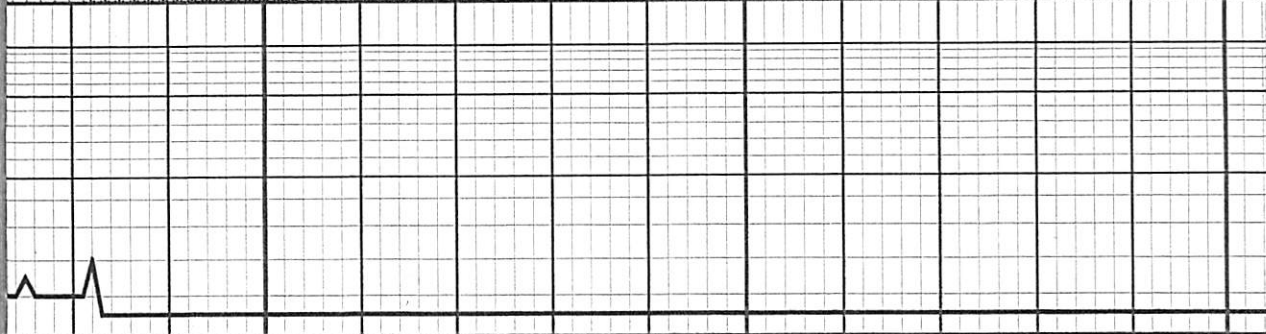
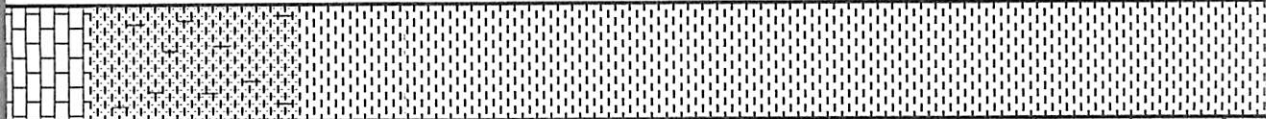
Shale: gray

Shale: gray

3850

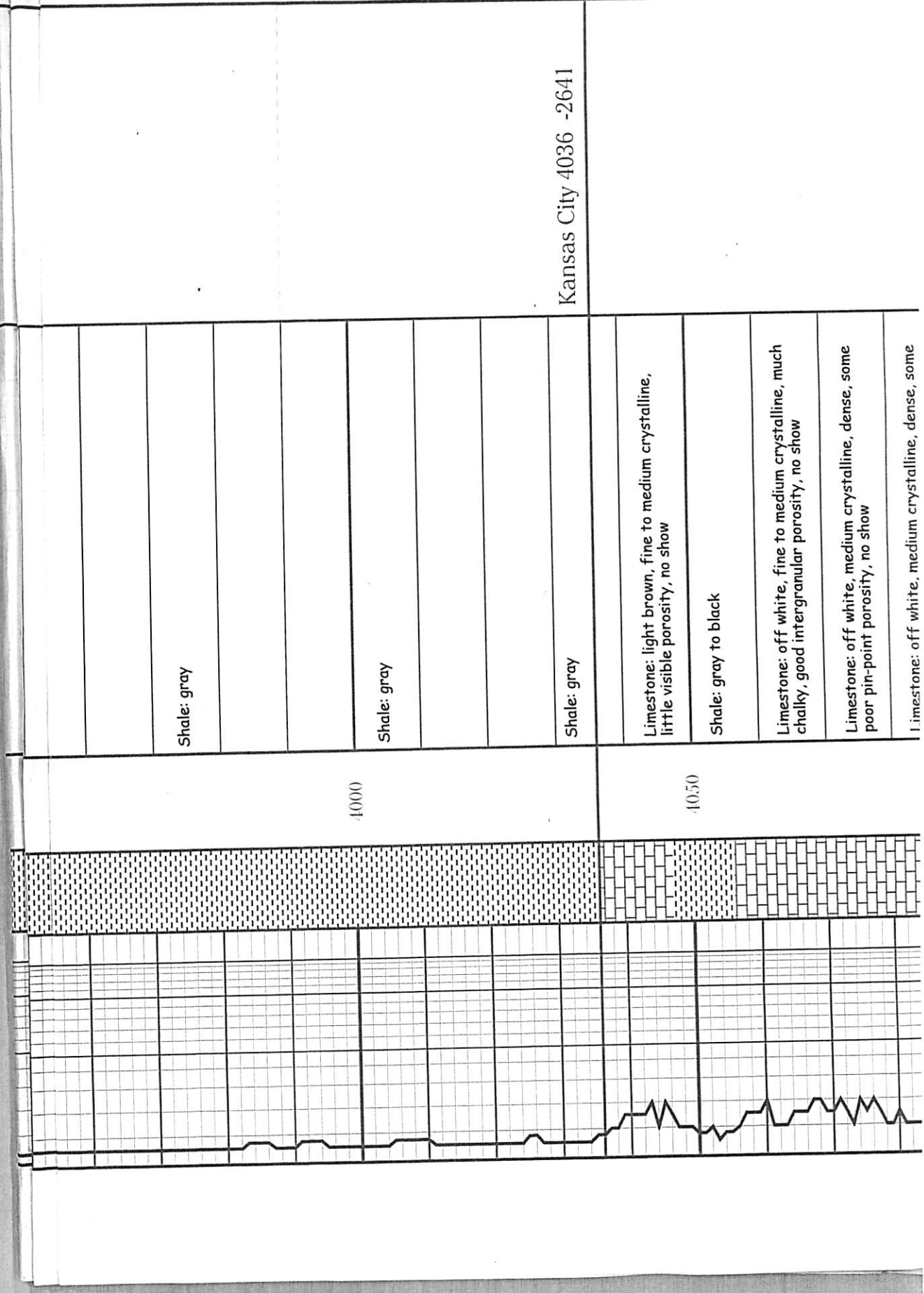
3900

3950



Limestone: light brown, medium crystalline, dense, no visible porosity, no show

Kansas City 4036 -2641



Shale: gray

Shale: gray

Shale: gray

Limestone: light brown, fine to medium crystalline, little visible porosity, no show

Shale: gray to black

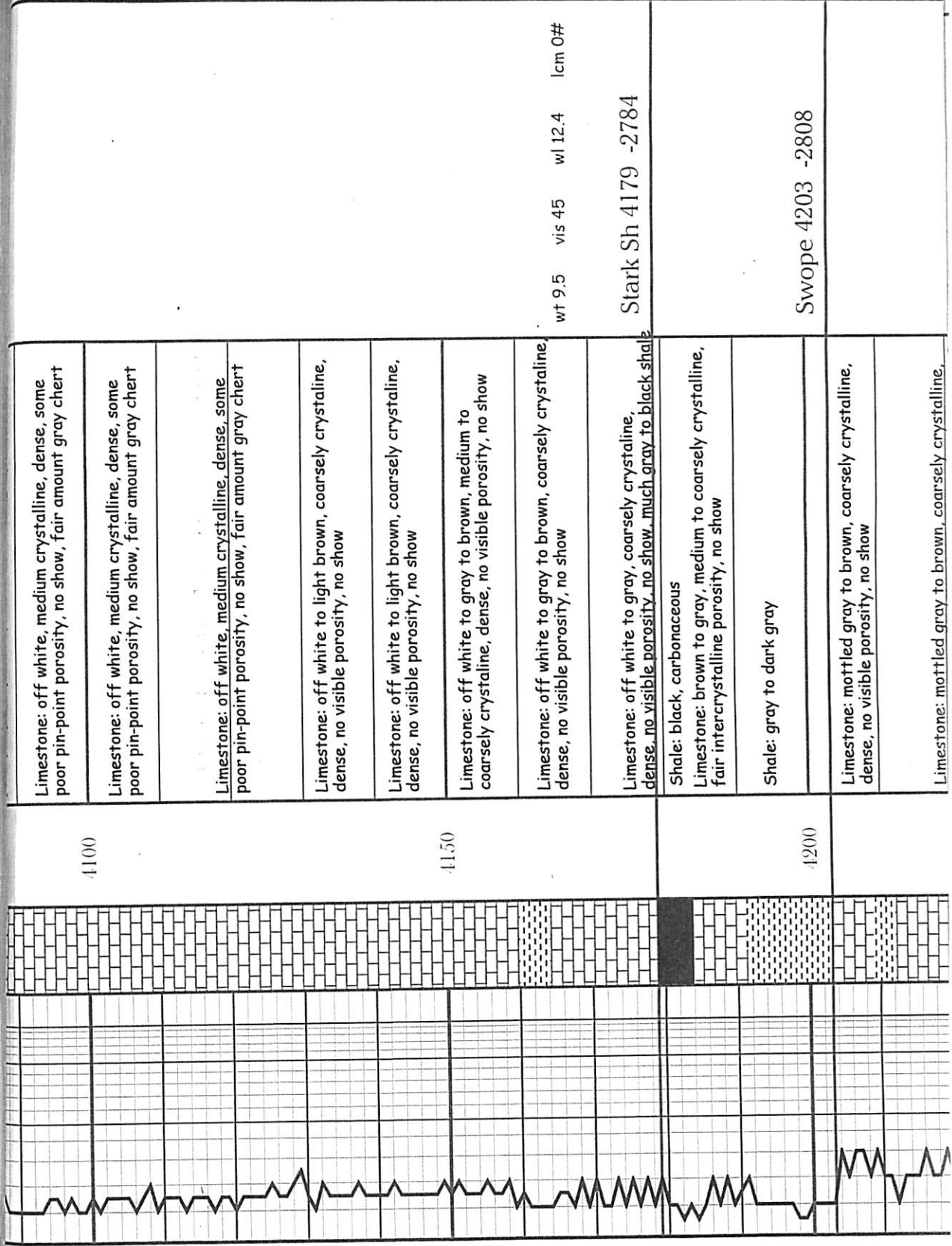
Limestone: off white, fine to medium crystalline, much chalky, good intergranular porosity, no show

Limestone: off white, medium crystalline, dense, some poor pin-point porosity, no show

Limestone: off white, medium crystalline, dense, some

4000

4050



Limestone: off white, medium crystalline, dense, some poor pin-point porosity, no show, fair amount gray chert

Limestone: off white, medium crystalline, dense, some poor pin-point porosity, no show, fair amount gray chert

Limestone: off white, medium crystalline, dense, some poor pin-point porosity, no show, fair amount gray chert

Limestone: off white to light brown, coarsely crystalline, dense, no visible porosity, no show

Limestone: off white to light brown, coarsely crystalline, dense, no visible porosity, no show

Limestone: off white to gray to brown, medium to coarsely crystalline, dense, no visible porosity, no show

Limestone: off white to gray to brown, coarsely crystalline, dense, no visible porosity, no show

Limestone: off white to gray, coarsely crystalline, dense, no visible porosity, no show, much gray to black shale

Shale: black, carbonaceous

Limestone: brown to gray, medium to coarsely crystalline, fair intercrystalline porosity, no show

Shale: gray to dark gray

Limestone: mottled gray to brown, coarsely crystalline, dense, no visible porosity, no show

Limestone: mottled gray to brown, coarsely crystalline,

4100

4150

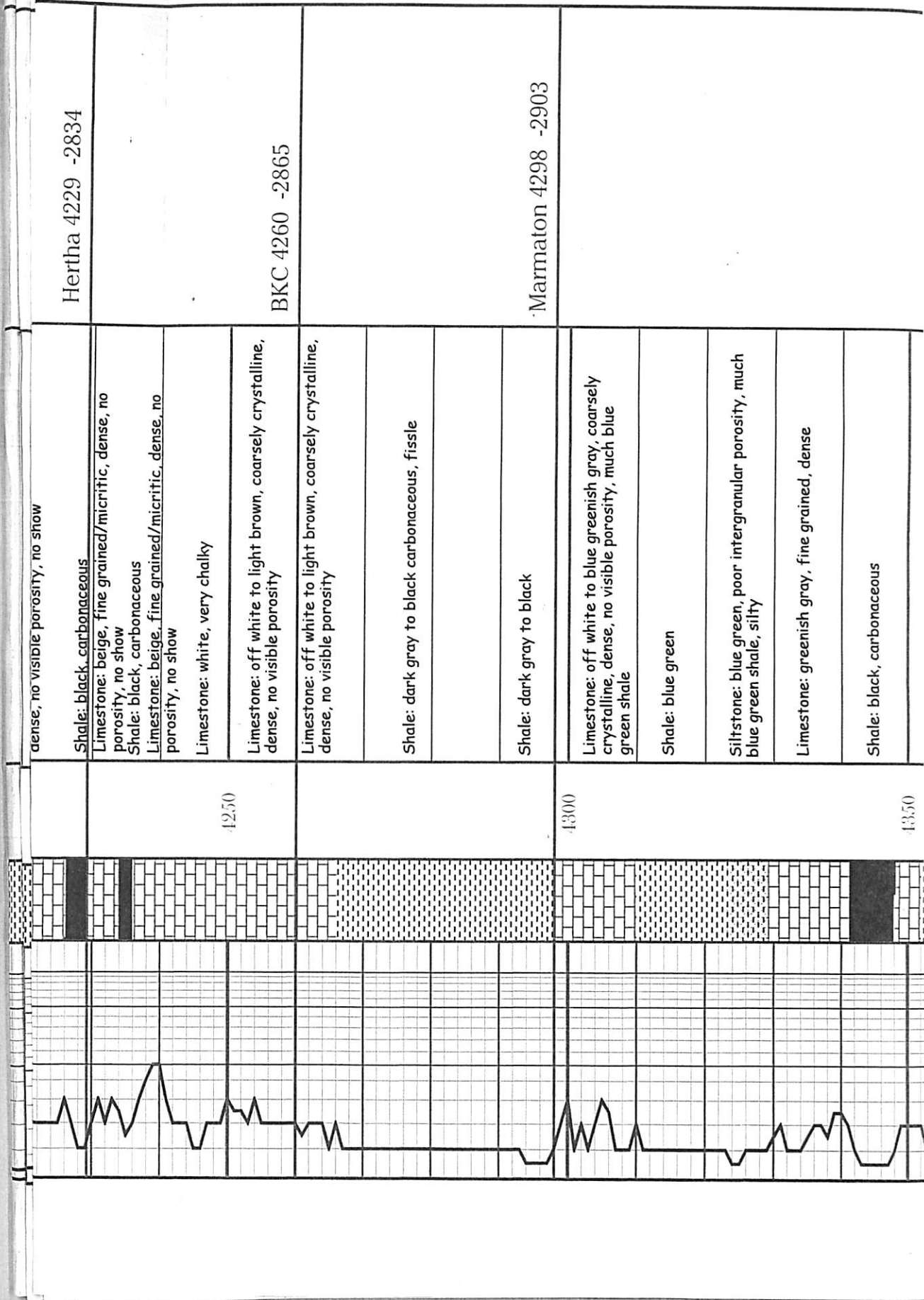
4200

wt 9.5 vis 45 wl 12.4 lcm 0#

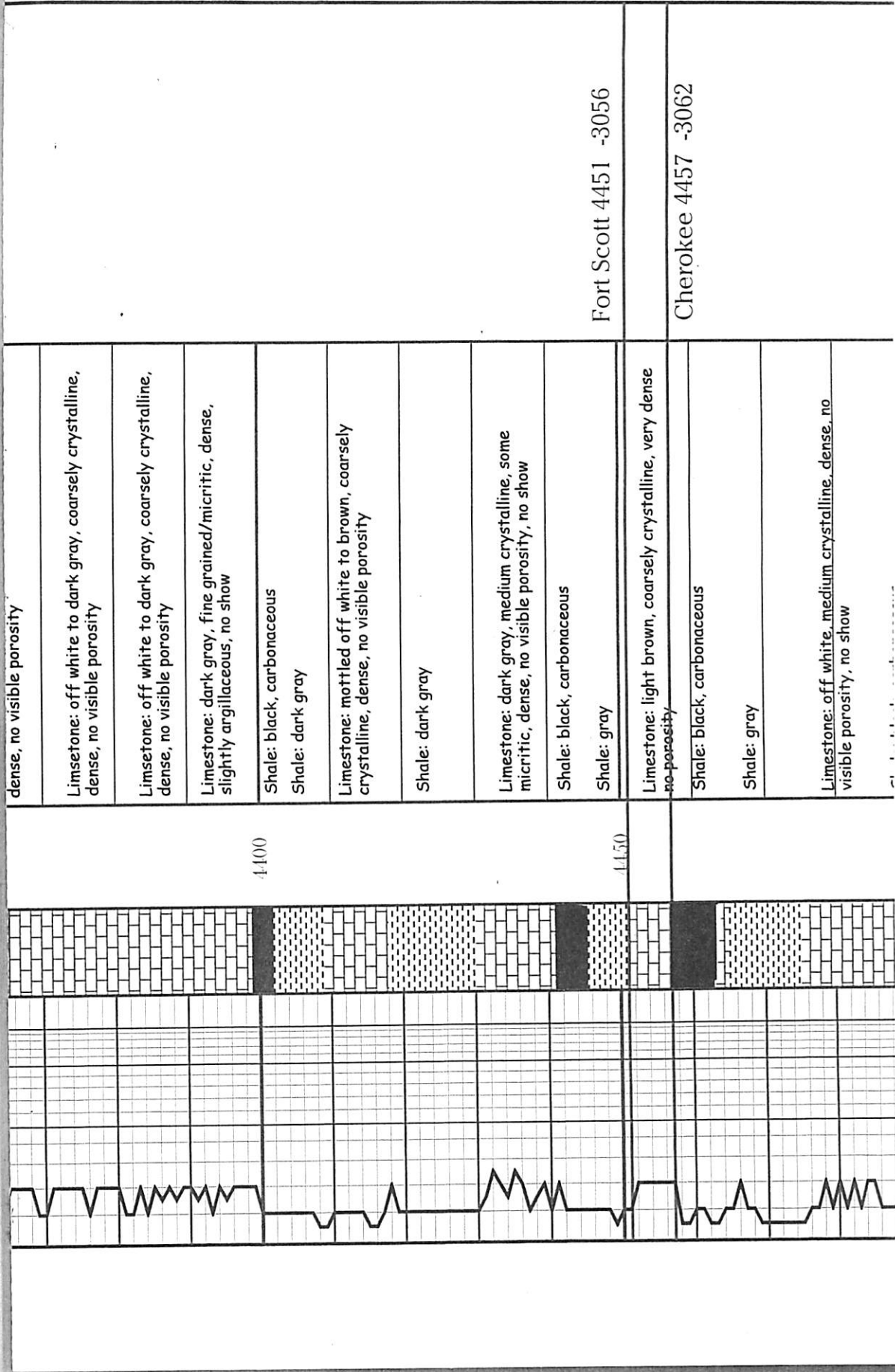
Stark Sh 4179 -2784

Swope 4203 -2808









dense, no visible porosity

Limestone: off white to dark gray, coarsely crystalline, dense, no visible porosity

Limestone: off white to dark gray, coarsely crystalline, dense, no visible porosity

Limestone: dark gray, fine grained/micritic, dense, slightly argillaceous, no show

Shale: black, carbonaceous  
Shale: dark gray

Limestone: mottled off white to brown, coarsely crystalline, dense, no visible porosity

Shale: dark gray

Limestone: dark gray, medium crystalline, some micritic, dense, no visible porosity, no show

Shale: black, carbonaceous  
Shale: gray

Limestone: light brown, coarsely crystalline, very dense no porosity

Shale: black, carbonaceous  
Shale: gray

Limestone: off white, medium crystalline, dense, no visible porosity, no show

Fort Scott 4451 -3056

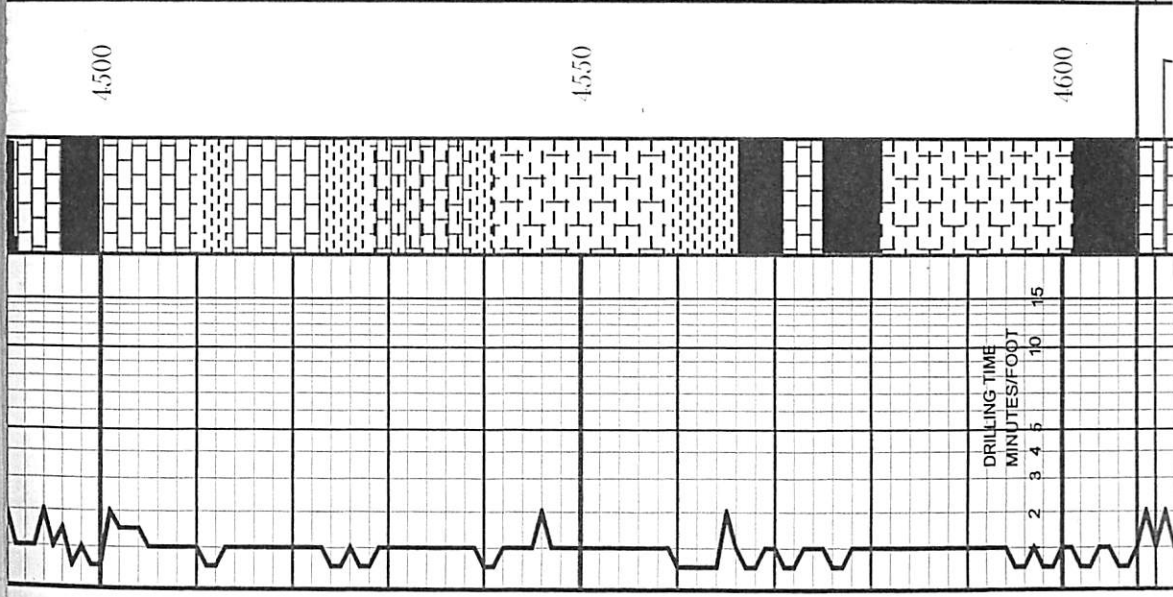
Cherokee 4457 -3062

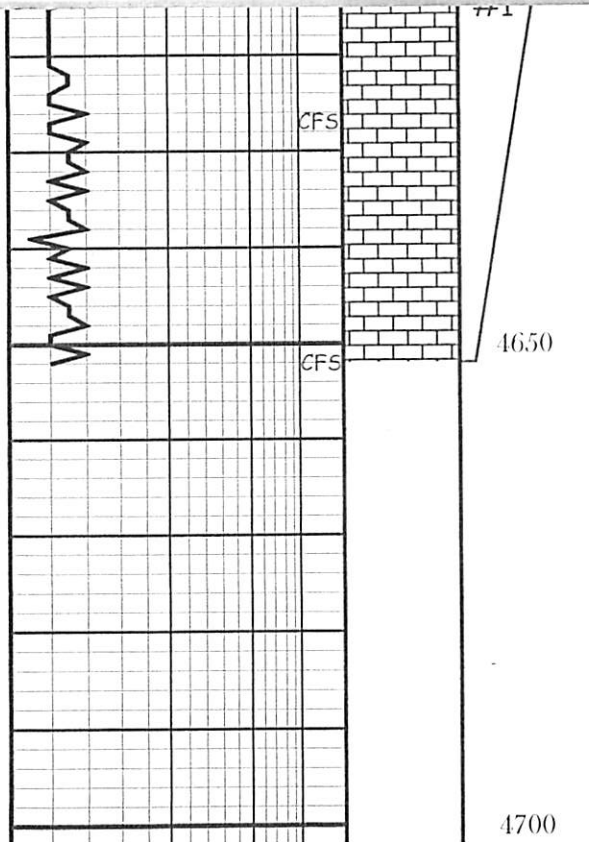
4400

4450



Shale: black, carbonaceous
Limestone: off white, coarsely crystalline, dense, no visible porosity, no show
Limestone: off white to bluish white, coarsely crystalline dense, no visible porosity, no show Shale: black, carbonaceous
Shale: gray
Limestone: gray, coarsely crystalline, dense, no porosity, argillaceous, no show
Limestone: gray, coarsely crystalline, dense, no porosity, argillaceous, no show Shale: gray, calcareous
Shale: gray, calcareous
Shale: gray to black, some highly calcareous
Shale: gray to black, some highly calcareous
Limestone: light brown, coarsely crystalline, dense, no visible porosity, no show Shale: red to gray, trace pyrite
Shale: gray to black, some highly calcareous
Shale: black
Shale: burgandy to gray Mississippian 4608 -3213





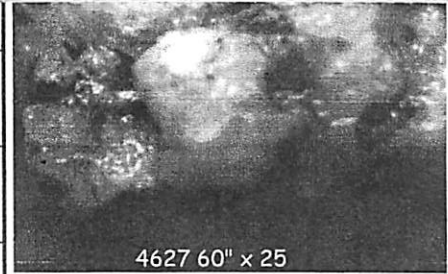
intercrystalline porosity, 1 piece w/ spotted snow oil, no odor, 40 unit show on Hot Wire

Limestone: white to off white, medium crystalline, slightly chalky, few pieces w/ spotted show oil, no odor, some green chert

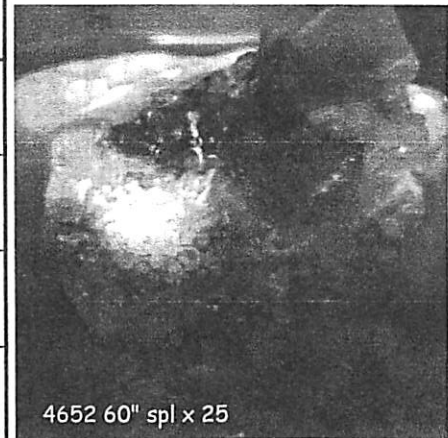
Limestone: off white, medium crystalline, fair intercrystalline porosity, no show

Limestone: off white, medium crystalline, fair intercrystalline porosity, trace gray oolitic chert w/ spotted show free oil, no odor 60 unit gas show on Hot Wire

wt 9.6 vis 46 wl 12.0 lcm 3#



4627 60" x 25



4652 60" spl x 25

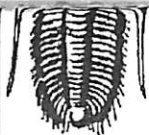
American Warrior, Inc. Pollock #1-24  
 2,035' FNL & 341' FWL 24-33S-8W  
 Harper County, KS

1395 KB

Comments:



DRILL STEM TEST REPORT



**ESTING, INC**

P.O.Box 399  
Garden City, Kansas 67846

ATTN: Frank Mize

**28-31s-9w Harper Co**

Job Ticket: 36948

**DST#: 1**

Test Start: 2010.09.08 @ 10:07:41

**GENERAL INFORMATION:**

Formation: **Mississippi**  
Deviated: No Whipstock ft (KB)  
Time Tool Opened: 12:19:41  
Time Test Ended: 16:32:11

Test Type: Conventional Bottom Hole  
Tester: Jerry Adams  
Unit No: 45

Interval: **4611.00 ft (KB) To 4652.00 ft (KB) (TVD)**  
Total Depth: 4652.00 ft (KB) (TVD)  
Hole Diameter: 7.88 inches Hole Condition: Fair

Reference Elevations: 1405.00 ft (KB)  
1395.00 ft (CF)  
KB to GR/CF: 10.00 ft

**Serial #: 6798**

**Inside**

Press@RunDepth: 88.28 psig @ 4612.00 ft (KB)  
Start Date: 2010.09.08 End Date: 2010.09.08  
Start Time: 10:07:42 End Time: 16:32:11

Capacity: 8000.00 psig  
Last Calib.: 2010.09.08  
Time On Btm: 2010.09.08 @ 12:18:11  
Time Off Btm: 2010.09.08 @ 14:23:41

TEST COMMENT: IF:Weak 1/4" blow. Dead in 21 mins.  
ISI:No blow.  
FF:No blow.  
FSI:No blow.

**PRESSURE SUMMARY**

Time (Min.)	Pressure (psig)	Temp (deg F)	Annotation
0	2346.82	127.02	Initial Hydro-static
2	94.30	126.26	Open To Flow (1)
32	93.32	127.55	Shut-In(1)
61	106.56	128.41	End Shut-In(1)
62	90.28	128.44	Open To Flow (2)
92	88.28	129.45	Shut-In(2)
125	97.13	130.39	End Shut-In(2)
126	2238.42	132.05	Final Hydro-static

**Recovery**

Length (ft)	Description	Volume (bbl)
120.00	Drilling Mud 100%m	1.68
0.00		0.00

Serial #: 6798

Inside American Warrior

28-31s-9w Harper Co

DST Test Number: 1

**Pressure vs. Time**

6798 Pressure

6798 Temperature



