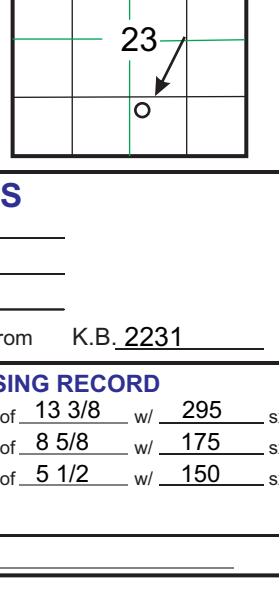


GEOLOGICAL REPORT

Larry A. Nicholson

37-4138426
-29-3635181

COMPANY **McCoy Petroleum Corporation**
API # **15-097-21776** FIELD **Alford**
LEASE **McCinkney Trust 'A'** WELL # **2-23**
LOCATION **NW SW SE**
SECTION **990' FSL 2310' FEL**
COUNTY **Kiowa** STATE **Kansas**



CONTRACTOR **Starling Drilling** RIG # **4**
SPUD **3-11-14 8:30 pm** COMP. **K.B. 2231**
RTD **5200 12:50pm 3-18-14** LTD **5202** D.F. **2222**
MUD TYPE **Chemical MudCo** G.L. **2222**

ELEVATIONS
All measurements from **K.B. 2231**

SAMPLES SAVED FROM 3900 TO RTD
DRILLING TIME FROM 3900 TO RTD
SAMPLES EXAMINED FROM 3900 TO RTD
GEOLOGICAL SUPERVISION FROM 3900 TO RTD
WELLSITE GEOLOGIST **LARRY A. NICHOLSON**

CASING RECORD
Conductor 270' of 13/38" wt 295 lb
Surface 609' of 8 5/8" wt 175 lb
Production 5194' of 5 1/2" wt 150 lb

FORMATIONAL SURVEYS by **Pioneer, Den, Neu, Dual, Micro, Sonic**

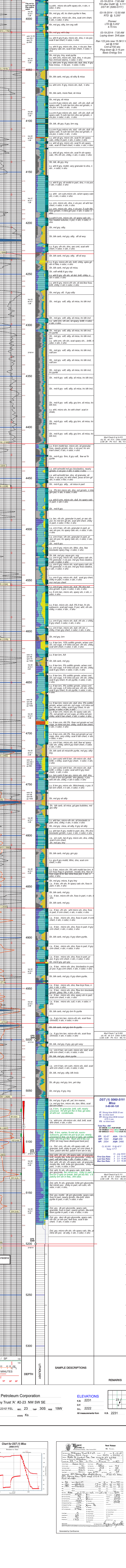
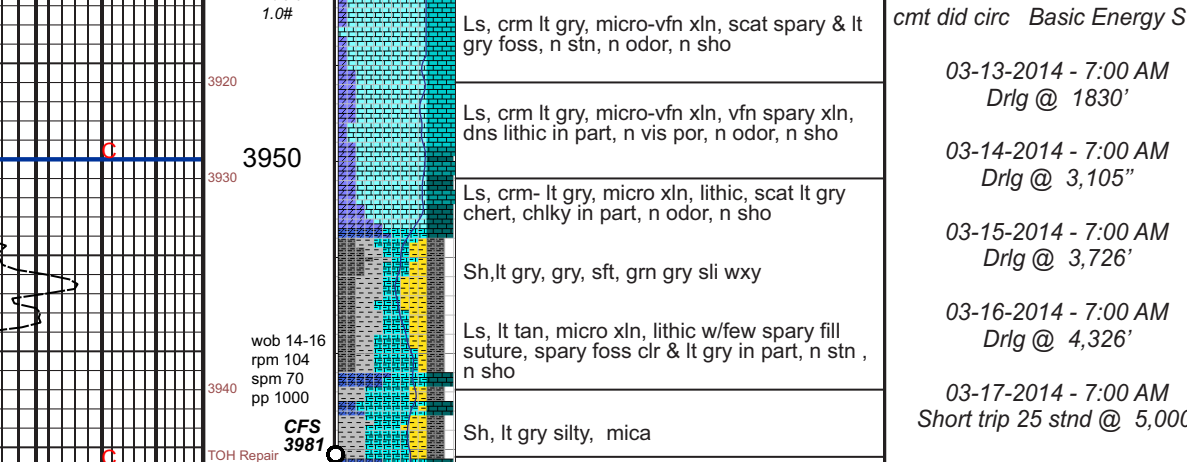
FORMATION	SAMPLE TOPS	ELEC LOG TOPS	SURSEA DATUM	REFERENCE WELL	B
Huebner	4230	-1999	4230	-1999	10 4239 -1995 -14
Brown Lime	4416	-2185	4416	-2185	7 4425 -2171 -14
Lansing	4439	-2208	4439	-2208	4440 -2199 -9 4446 -2192 -16
Stark	4766	-2535	4766	-2535	4764 -2523 -12 4773 -2519 -16
Hushpuckney	4813	-2582	4813	-2582	4812 -2571 -11 4821 -2567 -15
Marmaton	4871	-2640	4871	-2640	4874 -2633 -7 4882 -2628 -12
Pawnee	4945	-2714	4945	-2714	4940 -2699 -15 4952 -2698 -16
Cherokee	4984	-2753	4984	-2753	4989 -2748 -5 4996 -2742 -11
Mississippian	5057	-2826	5057	-2826	5054 -2813 -13 5062 -2808 -18
Spartan 0	5088	-2867	5088	-2867	5086 -2847 -10 5088 -2844 -23
RTD	5200	-2969	5200	-2969	5225 -2944 5200 -2946
LTD	5202	-2971	5202	-2971	5226 -2985 5200 -2984

REFERENCE WELLS
A. McCoy, McKinney Trust 'A' #1-23, 1980' FSL, 2310' FEL, W2 NW SE, Sec. 23-30S-19W, KB 2248
B. McCoy, Hill 'A' #1-23, 2310' FSL & 1980' FWL, N2 NE SW, Sec. 23-30S-19W, KB 2254

REMARKS & RECOMMENDATIONS:
Based on dst results and sample shows 5 1/2 csg was set.

LAN 7922, Modified 5/05, 11/11, 4/12 Hanover, KS 66645 1inch = 25.4mm 8.5 x 9.5 2 1/2 inch = 240mm

LEGEND



COMPANY **McCoy Petroleum Corporation**
LEASE **McCinkney Trust 'A'** WELL # **2-23**
LOCATION **990' FSL 2310' FEL** SEC. **23** TWP. **30S** R19W
COUNTY **Kiowa** STATE **Ks**

ELEVATIONS
K.B. 2231
D.F. 2222
G.L. 2222
All measurements from **K.B. 2231**

Chart for DST (1) Miss (5060-5111)

Test Ticket

Well	2-23	Date	3/17/14
Location	990' FSL 2310' FEL	Operator	Starling Drilling
Depth	5060-5111	Pressure	1100
Flow Rate	1.7	Time	17
Temperature	111	Pressure	1100
Viscosity	1.1	Pressure	1100
Permeability	1.1	Pressure	1100
Porosity	1.1	Pressure	1100
Formation	214	Pressure	1100
Flow Rate	1.7	Pressure	1100
Temperature	111	Pressure	1100
Viscosity	1.1	Pressure	1100
Permeability	1.1	Pressure	1100
Porosity	1.1	Pressure	1100
Formation	214	Pressure	1100

DST (1) 5060-5111 Miss 5-60-90-120

IS: Strong blow B08 20 sec
FS: Strong blow B08 10 sec
FS: 2 1/2 min

Total Rec: 400
SP: 1024
FIP: 2554

FP: 92-67 FFP: 139-116
SP: 1024 FSP: 956
FIP: 2554 FFP: 2466

CL 92003 103.40 F
Temp: 117 F

First Gas Rate: 5.2 @ 13.49
Max Gas Rate: 5.2 @ 16.86
Max Gas Rate: 5.2 @ 16.86

Mod Check at 5.111
L.C.M. 3.08 Pn: 10.5 W.L. 0.6