



**TRILOBITE  
TESTING, INC**

# DRILL STEM TEST REPORT

Val Energy  
200 W. Douglas Ave. STE. 520  
ATTN: Harley Sayles

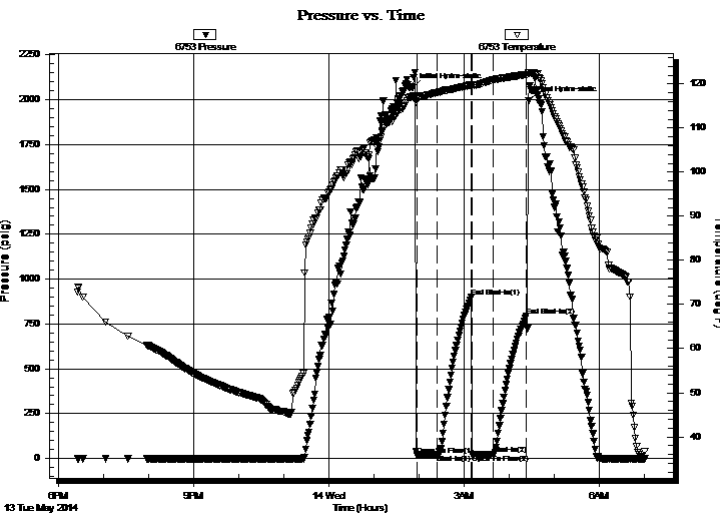
**12/8s/36w**  
**Beach Bros #1-12**  
Job Ticket: 58135      **DST#: 1**  
Test Start: 2014.05.13 @ 18:25:00

## GENERAL INFORMATION:

Formation: **LKC "H-L" & Marmaton**  
Deviated: No Whipstock: ft (KB)  
Time Tool Opened: 01:57:15  
Time Test Ended: 07:01:15  
Interval: **4295.00 ft (KB) To 4488.00 ft (KB) (TVD)**  
Total Depth: 4488.00 ft (KB) (TVD)  
Hole Diameter: 7.88 inches Hole Condition: Fair  
Test Type: Conventional Bottom Hole (Initial)  
Tester: Brandon Quintana  
Unit No: 54  
Reference Elevations: 3337.00 ft (KB)  
3327.00 ft (CF)  
KB to GR/CF: 10.00 ft

**Serial #: 6753**      **Inside**  
Press@RunDepth: 24.57 psig @ 4296.00 ft (KB)      Capacity: 8000.00 psig  
Start Date: 2014.05.13      End Date: 2014.05.14      Last Calib.: 2014.05.14  
Start Time: 18:25:05      End Time: 07:01:15      Time On Btm: 2014.05.14 @ 01:51:15  
Time Off Btm: 2014.05.14 @ 04:25:45

**TEST COMMENT:** 30 - IF - Open w/ surface blow , built to 1 3/4"  
45 - ISI - No Return  
30 - FF - Surface Blow , did not build  
45 - FSI - No Return



## PRESSURE SUMMARY

Time (Min.)	Pressure (psig)	Temp (deg F)	Annotation
0	2068.12	116.98	Initial Hydro-static
6	19.61	116.88	Open To Flow (1)
33	21.27	118.02	Shut-In(1)
78	898.24	119.70	End Shut-In(1)
80	23.42	119.73	Open To Flow (2)
107	24.57	120.86	Shut-In(2)
152	794.48	122.14	End Shut-In(2)
155	1995.01	122.57	Final Hydro-static

## Recovery

Length (ft)	Description	Volume (bbl)
5.00	100%m	0.07

## Gas Rates

Choke (inches)	Pressure (psig)	Gas Rate (Mcf/d)



**TRILOBITE  
TESTING, INC**

# DRILL STEM TEST REPORT

## FLUID SUMMARY

Val Energy **12/8s/36w**  
 200 W. Douglas Ave. STE. 520 **Beach Bros #1-12**  
 Job Ticket: 58135 **DST#: 1**  
 ATTN: Harley Sayles Test Start: 2014.05.13 @ 18:25:00

### Mud and Cushion Information

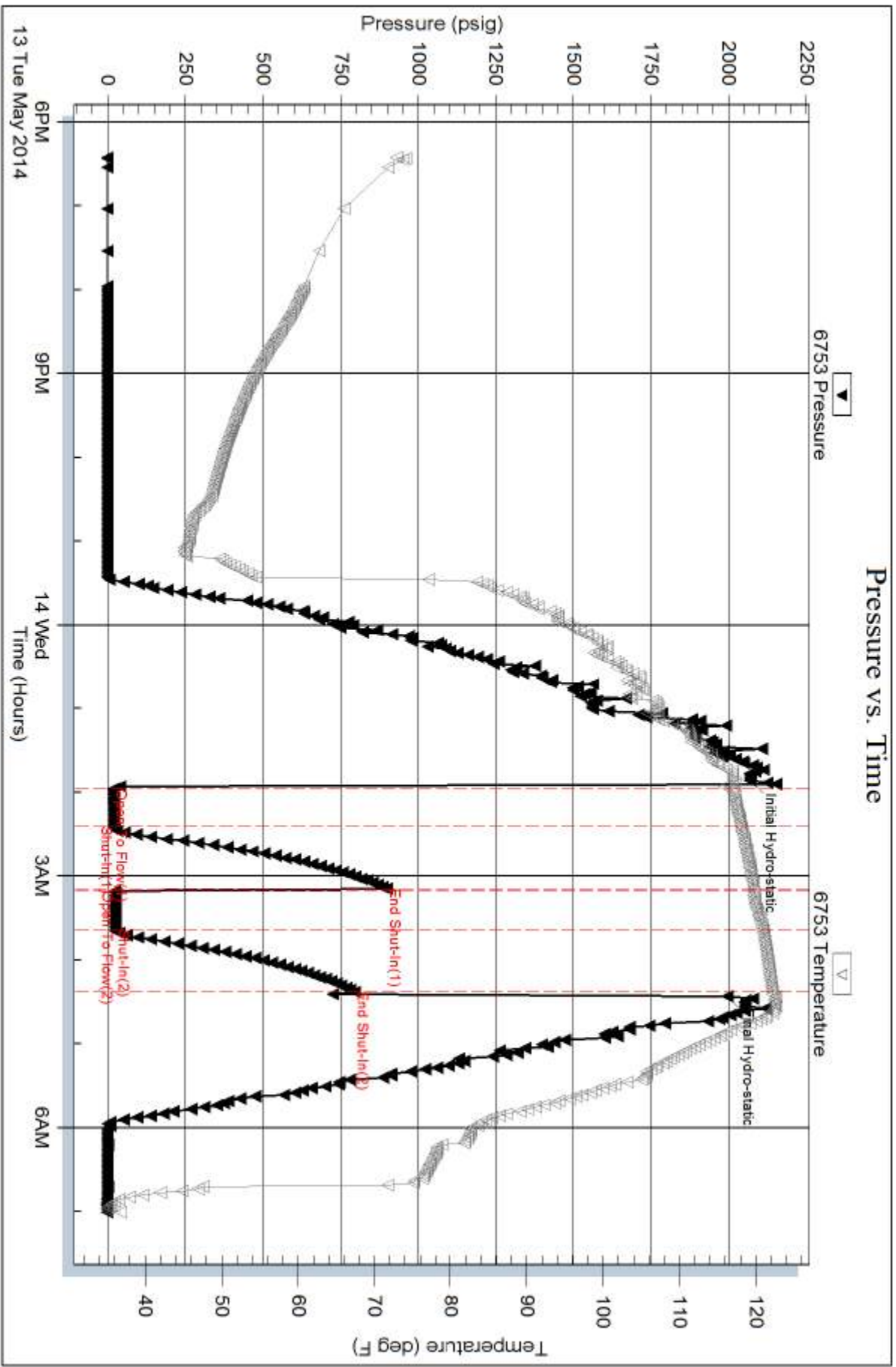
Mud Type: Gel Chem	Cushion Type:	Oil API:	deg API
Mud Weight: 10.00 lb/gal	Cushion Length: ft	Water Salinity:	ppm
Viscosity: 51.00 sec/qt	Cushion Volume: bbl		
Water Loss: 8.77 in <sup>3</sup>	Gas Cushion Type:		
Resistivity: 0.00 ohm.m	Gas Cushion Pressure: psig		
Salinity: 4000.00 ppm			
Filter Cake: 1.00 inches			

### Recovery Information

Recovery Table

Length ft	Description	Volume bbl
5.00	100%m	0.070

Total Length: 5.00 ft      Total Volume: 0.070 bbl  
 Num Fluid Samples: 0      Num Gas Bombs: 0      Serial #:  
 Laboratory Name:      Laboratory Location:  
 Recovery Comments:







**TRILOBITE**  
TESTING, INC.

# DRILL STEM TEST REPORT

**FLUID SUMMARY**

Val Energy **12/8s/36w**  
 200 W. Douglas Ave. STE. 520 **Beach Bros #1-12**  
 Job Ticket: 58136 **DST#: 2**  
 ATTN: Harley Sayles Test Start: 2014.05.15 @ 00:00:00

## Mud and Cushion Information

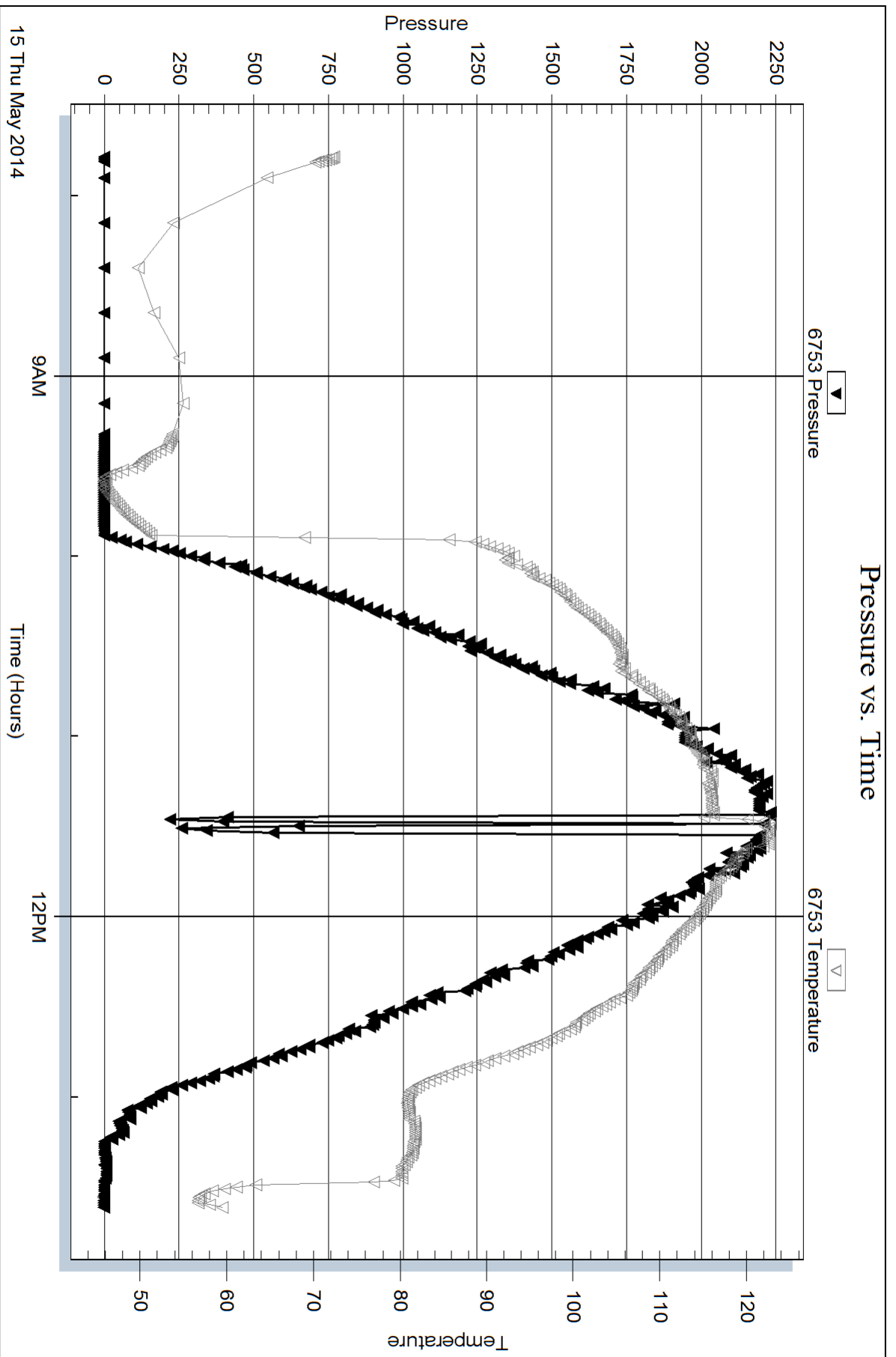
Mud Type: Gel Chem	Cushion Type:	Oil API:	deg API
Mud Weight: 9.00 lb/gal	Cushion Length: ft	Water Salinity:	ppm
Viscosity: 48.00 sec/qt	Cushion Volume: bbl		
Water Loss: 10.37 in <sup>3</sup>	Gas Cushion Type:		
Resistivity: 0.00 ohm.m	Gas Cushion Pressure: psig		
Salinity: 4500.00 ppm			
Filter Cake: 1.00 inches			

## Recovery Information

Recovery Table

Length ft	Description	Volume bbl

Total Length: ft Total Volume: bbl  
 Num Fluid Samples: 0 Num Gas Bombs: 0 Serial #:  
 Laboratory Name: Laboratory Location:  
 Recovery Comments:





**TRILOBITE  
TESTING, INC.**

# DRILL STEM TEST REPORT

Val Energy  
200 W. Douglas Ave. STE. 520  
ATTN: Harley Sayles

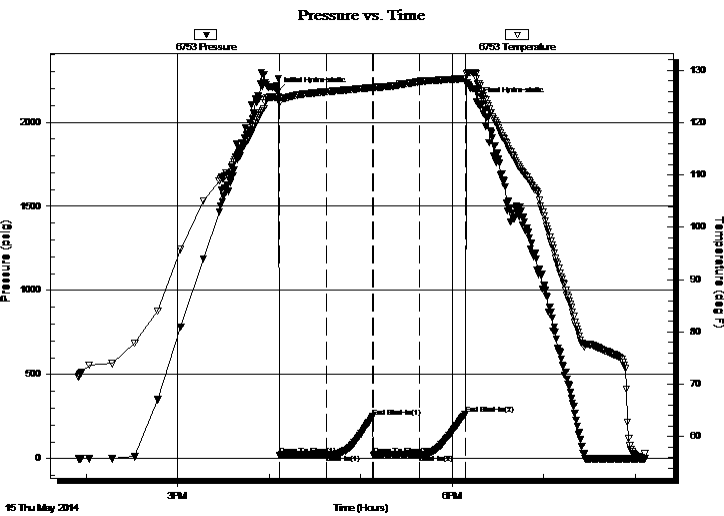
**12/8s/36w**  
**Beach Bros #1-12**  
Job Ticket: 58137      **DST#: 3**  
Test Start: 2014.05.15 @ 13:55:00

## GENERAL INFORMATION:

Formation: **Myrick Station, Fort**  
Deviated: No Whipstock: ft (KB)  
Time Tool Opened: 16:07:00  
Time Test Ended: 20:06:15  
Interval: **4532.00 ft (KB) To 4646.00 ft (KB) (TVD)**  
Total Depth: 4646.00 ft (KB) (TVD)  
Hole Diameter: 7.88 inches Hole Condition: Fair  
Test Type: Conventional Bottom Hole (Initial)  
Tester: Brandon Quintana  
Unit No: 54  
Reference Elevations: 3337.00 ft (KB)  
3327.00 ft (CF)  
KB to GR/CF: 10.00 ft

**Serial #: 6753      Inside**  
Press @ RunDepth: 23.40 psig @ 4533.00 ft (KB)      Capacity: 8000.00 psig  
Start Date: 2014.05.15      End Date: 2014.05.15      Last Calib.: 2014.05.15  
Start Time: 13:55:05      End Time: 20:06:14      Time On Btm: 2014.05.15 @ 16:05:30  
Time Off Btm: 2014.05.15 @ 18:15:45

**TEST COMMENT:** 30 - IF - Surface blow , did not build  
30 - ISI - No Return  
30 - FF - No Blow  
30 - FSI - No Return



## PRESSURE SUMMARY

Time (Min.)	Pressure (psig)	Temp (deg F)	Annotation
0	2180.25	124.89	Initial Hydro-static
2	21.04	123.86	Open To Flow (1)
33	22.88	125.93	Shut-In(1)
63	248.72	126.73	End Shut-In(1)
63	20.79	126.65	Open To Flow (2)
93	23.40	127.91	Shut-In(2)
123	262.71	128.44	End Shut-In(2)
131	2124.26	129.42	Final Hydro-static

## Recovery

Length (ft)	Description	Volume (bbl)
5.00	100%m	0.07

## Gas Rates

Choke (inches)	Pressure (psig)	Gas Rate (Mcf/d)



**TRILOBITE**  
TESTING, INC.

# DRILL STEM TEST REPORT

**FLUID SUMMARY**

Val Energy	<b>12/8s/36w</b>
200 W. Douglas Ave. STE. 520	<b>Beach Bros #1-12</b>
ATTN: Harley Sayles	Job Ticket: 58137 <b>DST#: 3</b>
	Test Start: 2014.05.15 @ 13:55:00

## Mud and Cushion Information

Mud Type: Gel Chem	Cushion Type:	Oil API:	deg API
Mud Weight: 9.00 lb/gal	Cushion Length: ft	Water Salinity:	ppm
Viscosity: 48.00 sec/qt	Cushion Volume: bbl		
Water Loss: 10.39 in <sup>3</sup>	Gas Cushion Type:		
Resistivity: 0.00 ohm.m	Gas Cushion Pressure: psig		
Salinity: 4500.00 ppm			
Filter Cake: 1.00 inches			

## Recovery Information

Recovery Table

Length ft	Description	Volume bbl
5.00	100%m	0.070

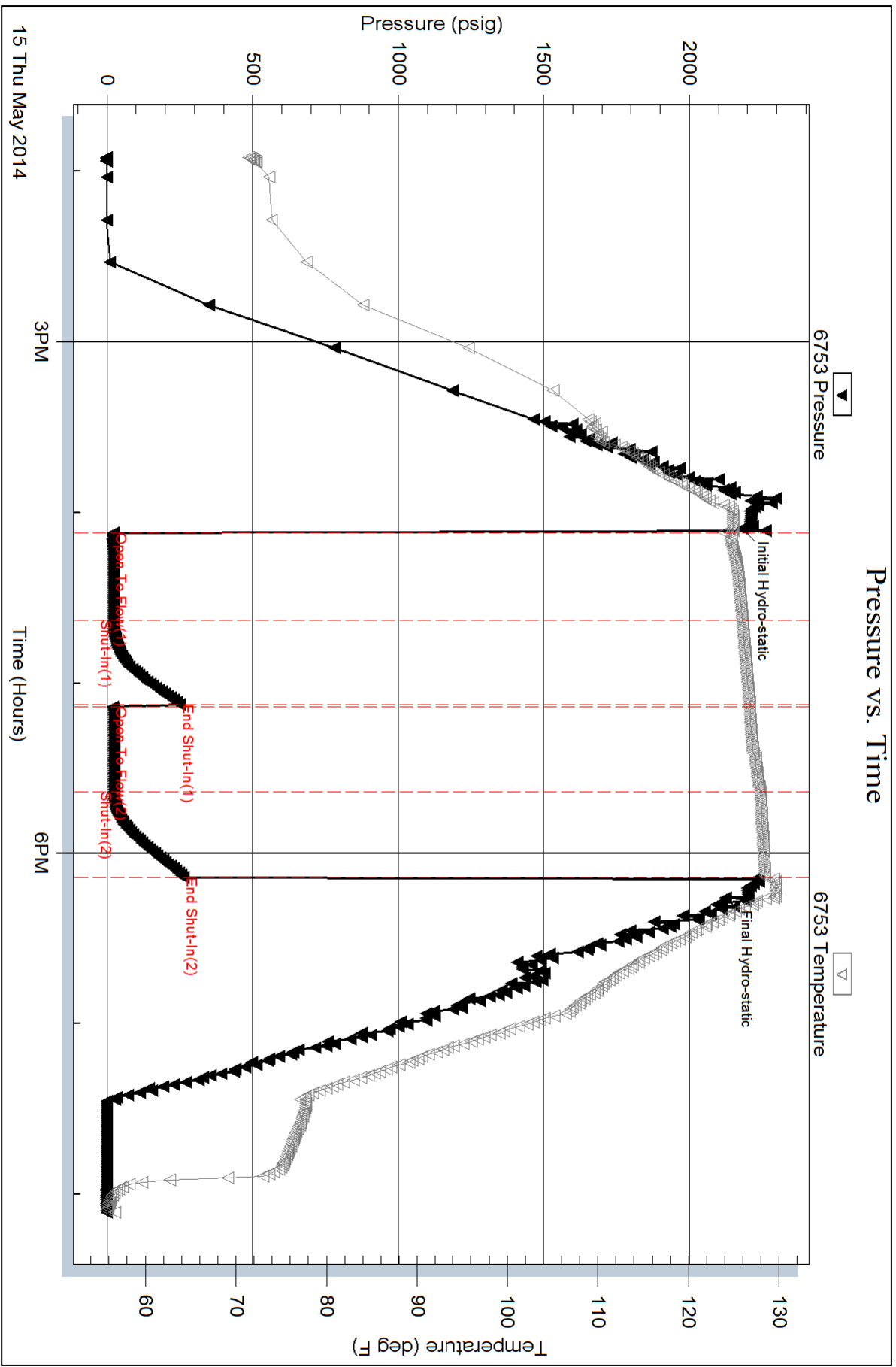
Total Length: 5.00 ft      Total Volume: 0.070 bbl

Num Fluid Samples: 0      Num Gas Bombs: 0      Serial #:

Laboratory Name:      Laboratory Location:

Recovery Comments:







**TRILOBITE TESTING, INC.**

# DRILL STEM TEST REPORT

Val Energy  
 200 W. Douglas Ave. STE. 520  
 ATTN: Harley Sayles

**12/8s/36w**  
**Beach Bros #1-12**  
 Job Ticket: 58138      **DST#: 4**  
 Test Start: 2014.05.16 @ 12:43:00

## GENERAL INFORMATION:

Formation: **Johnson LM & Johnson**  
 Deviated: No      Whipstock:      ft (KB)  
 Time Tool Opened: 15:13:00  
 Time Test Ended: 19:57:00  
 Interval: **4605.00 ft (KB) To 4730.00 ft (KB) (TVD)**  
 Total Depth: 4730.00 ft (KB) (TVD)  
 Hole Diameter: 7.88 inches      Hole Condition: Fair  
 Test Type: Conventional Bottom Hole (Initial)  
 Tester: Brandon Quintana  
 Unit No: 54  
 Reference Elevations: 3337.00 ft (KB)  
 3327.00 ft (CF)  
 KB to GR/CF: 10.00 ft

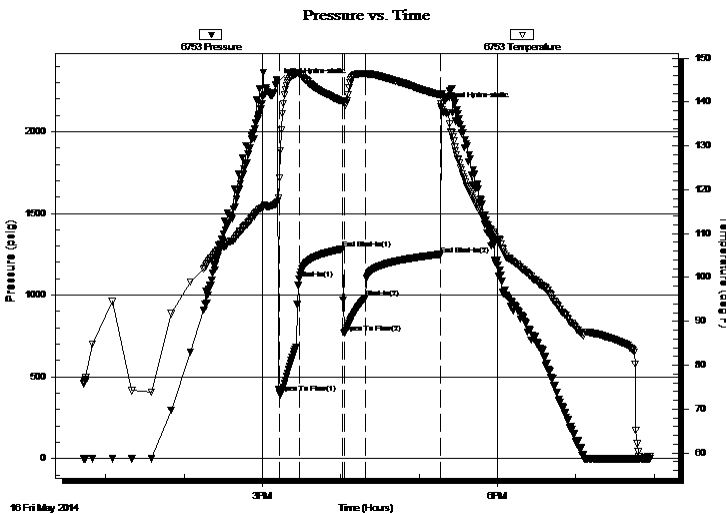
## Serial #: 6753

Inside

Press @ Run Depth: 983.07 psig @ 4606.00 ft (KB)      Capacity: 8000.00 psig  
 Start Date: 2014.05.16      End Date: 2014.05.16      Last Calib.: 2014.05.16  
 Start Time: 12:43:05      End Time: 19:56:59      Time On Btm: 2014.05.16 @ 15:11:30  
 Time Off Btm: 2014.05.16 @ 17:16:45

TEST COMMENT: 15 - IF - Opened and instant B.o.B  
 45 - ISI - No Return  
 15 - FF - B.o.B in 1 min  
 45 - FSI - No Return

## PRESSURE SUMMARY



Time (Min.)	Pressure (psig)	Temp (deg F)	Annotation
0	2302.70	117.21	Initial Hydro-static
2	400.56	122.61	Open To Flow (1)
17	1097.57	146.52	Shut-In(1)
50	1282.59	140.18	End Shut-In(1)
51	767.18	140.10	Open To Flow (2)
68	983.07	146.39	Shut-In(2)
125	1245.08	141.62	End Shut-In(2)
126	2154.65	139.69	Final Hydro-static

## Recovery

Length (ft)	Description	Volume (bbl)
1550.00	MW 90%w, 10%m	21.74
186.00	WM 40%W, 60%m	2.61
191.00	M 100%m	2.68

## Gas Rates

	Choke (inches)	Pressure (psig)	Gas Rate (Mcf/d)



**TRILOBITE  
TESTING, INC.**

# DRILL STEM TEST REPORT

**FLUID SUMMARY**

Val Energy **12/8s/36w**  
 200 W. Douglas Ave. STE. 520 **Beach Bros #1-12**  
 Job Ticket: 58138 **DST#: 4**  
 ATTN: Harley Sayles Test Start: 2014.05.16 @ 12:43:00

## Mud and Cushion Information

Mud Type: Gel Chem	Cushion Type:	Oil API:	deg API
Mud Weight: 9.00 lb/gal	Cushion Length: ft	Water Salinity:	ppm
Viscosity: 55.00 sec/qt	Cushion Volume: bbl		
Water Loss: 7.19 in <sup>3</sup>	Gas Cushion Type:		
Resistivity: 0.00 ohm.m	Gas Cushion Pressure: psig		
Salinity: 5000.00 ppm			
Filter Cake: 1.00 inches			

## Recovery Information

Recovery Table

Length ft	Description	Volume bbl
1550.00	MW 90%w , 10%m	21.742
186.00	WM 40%W, 60%m	2.609
191.00	M 100%m	2.679

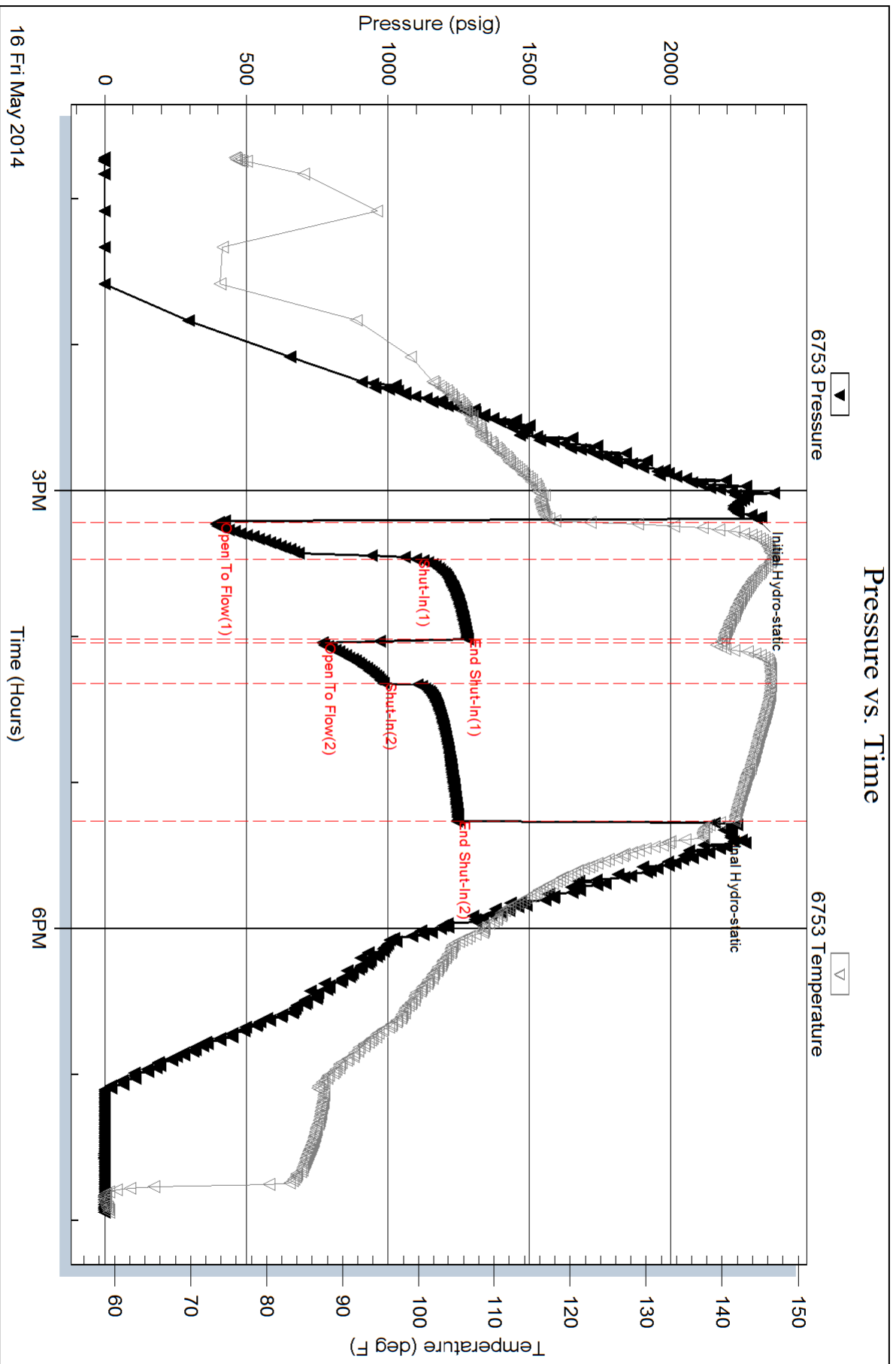
Total Length: 1927.00 ft Total Volume: 27.030 bbl

Num Fluid Samples: 0 Num Gas Bombs: 0 Serial #:

Laboratory Name: Laboratory Location:

Recovery Comments: RW = .073 @ 63.5 Degrees F Chlorides = 125000 ppm

# Pressure vs. Time





**TRILOBITE TESTING, INC**

# DRILL STEM TEST REPORT

Val Energy  
 200 W. Douglas Ave. STE. 520  
 Wichita Ks 67202  
 ATTN: Harley Sayles

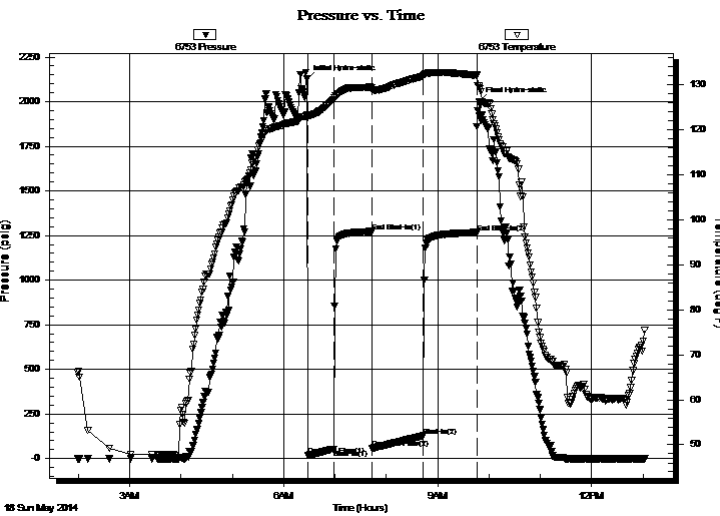
**12/8s/36w**  
**Beach Bros #1-12**  
 Job Ticket: 58301 **DST#: 5**  
 Test Start: 2014.05.18 @ 01:59:00

## GENERAL INFORMATION:

Formation: **Lans - A & B**  
 Deviated: No Whipstock: ft (KB)  
 Time Tool Opened: 06:28:00  
 Time Test Ended: 13:02:15  
 Interval: **4132.00 ft (KB) To 4190.00 ft (KB) (TVD)**  
 Total Depth: 4852.00 ft (KB) (TVD)  
 Hole Diameter: 7.88 inches Hole Condition: Good  
 Test Type: Conventional Straddle (Initial)  
 Tester: Royal Fisher  
 Unit No: #54  
 Reference Elevations: 3337.00 ft (KB)  
 3327.00 ft (CF)  
 KB to GR/CF: 10.00 ft

**Serial #: 6753 Inside**  
 Press@RunDepth: 127.29 psig @ 4133.00 ft (KB) Capacity: 8000.00 psig  
 Start Date: 2014.05.18 End Date: 2014.05.18 Last Calib.: 2014.05.18  
 Start Time: 01:59:05 End Time: 13:02:15 Time On Btm: 2014.05.18 @ 06:27:30  
 Time Off Btm: 2014.05.18 @ 09:48:45

TEST COMMENT: 30 - IF - Surface blow built to 5 1/4"  
 45 - ISI - No Return  
 60 - FF - Surface blow built to 4 3/4"  
 60 - FSI - No Return



## PRESSURE SUMMARY

Time (Min.)	Pressure (psig)	Temp (deg F)	Annotation
0	2124.83	123.32	Initial Hydro-static
1	17.72	122.65	Open To Flow (1)
31	53.95	126.70	Shut-In(1)
76	1273.11	129.35	End Shut-In(1)
77	58.32	128.82	Open To Flow (2)
136	127.29	131.89	Shut-In(2)
198	1267.02	132.06	End Shut-In(2)
202	1997.74	129.44	Final Hydro-static

## Recovery

Length (ft)	Description	Volume (bbl)
113.00	MW - 90W - 10M	1.59

## Gas Rates

	Choke (inches)	Pressure (psig)	Gas Rate (Mcf/d)



**TRILOBITE TESTING, INC**

# DRILL STEM TEST REPORT

Val Energy  
 200 W. Douglas Ave. STE. 520  
 Wichita Ks 67202  
 ATTN: Harley Sayles

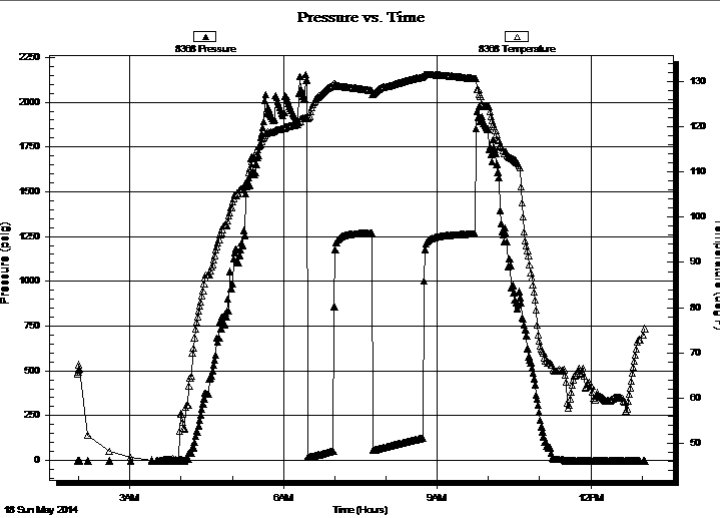
**12/8s/36w**  
**Beach Bros #1-12**  
 Job Ticket: 58301 **DST#: 5**  
 Test Start: 2014.05.18 @ 01:59:00

## GENERAL INFORMATION:

Formation: **Lans - A & B**  
 Deviated: No Whipstock: ft (KB)  
 Time Tool Opened: 06:28:00  
 Time Test Ended: 13:02:15  
 Interval: **4132.00 ft (KB) To 4190.00 ft (KB) (TVD)**  
 Total Depth: 4852.00 ft (KB) (TVD)  
 Hole Diameter: 7.88 inches Hole Condition: Good  
 Test Type: Conventional Straddle (Initial)  
 Tester: Royal Fisher  
 Unit No: #54  
 Reference Elevations: 3337.00 ft (KB)  
 3327.00 ft (CF)  
 KB to GR/CF: 10.00 ft

**Serial #: 8368 Inside**  
 Press@RunDepth: psig @ 4133.00 ft (KB) Capacity: 8000.00 psig  
 Start Date: 2014.05.18 End Date: 2014.05.18 Last Calib.: 2014.05.18  
 Start Time: 01:59:05 End Time: 13:03:45 Time On Btm:  
 Time Off Btm:

TEST COMMENT: 30 - IF - Surface blow built to 5 1/4"  
 45 - ISI - No Return  
 60 - FF - Surface blow built to 4 3/4"  
 60 - FSI - No Return



PRESSURE SUMMARY			
Time (Min.)	Pressure (psig)	Temp (deg F)	Annotation

Recovery		
Length (ft)	Description	Volume (bbl)
113.00	MW - 90W - 10M	1.59

Gas Rates			
	Choke (inches)	Pressure (psig)	Gas Rate (Mcf/d)





**TRILOBITE  
TESTING, INC**

# DRILL STEM TEST REPORT

## FLUID SUMMARY

Val Energy

**12/8s/36w**

200 W. Douglas Ave. STE. 520  
Wichita Ks 67202

**Beach Bros #1-12**

Job Ticket: 58301

**DST#: 5**

ATTN: Harley Sayles

Test Start: 2014.05.18 @ 01:59:00

### Mud and Cushion Information

Mud Type: Gel Chem

Cushion Type:

Oil API:

deg API

Mud Weight: 9.00 lb/gal

Cushion Length:

ft

Water Salinity:

75000 ppm

Viscosity: 56.00 sec/qt

Cushion Volume:

bbbl

Water Loss: 7.99 in<sup>3</sup>

Gas Cushion Type:

Resistivity: 0.00 ohm.m

Gas Cushion Pressure:

psig

Salinity: 5500.00 ppm

Filter Cake: 1.00 inches

### Recovery Information

Recovery Table

Length ft	Description	Volume bbl
113.00	MW - 90W - 10M	1.585

Total Length: 113.00 ft

Total Volume: 1.585 bbl

Num Fluid Samples: 0

Num Gas Bombs: 0

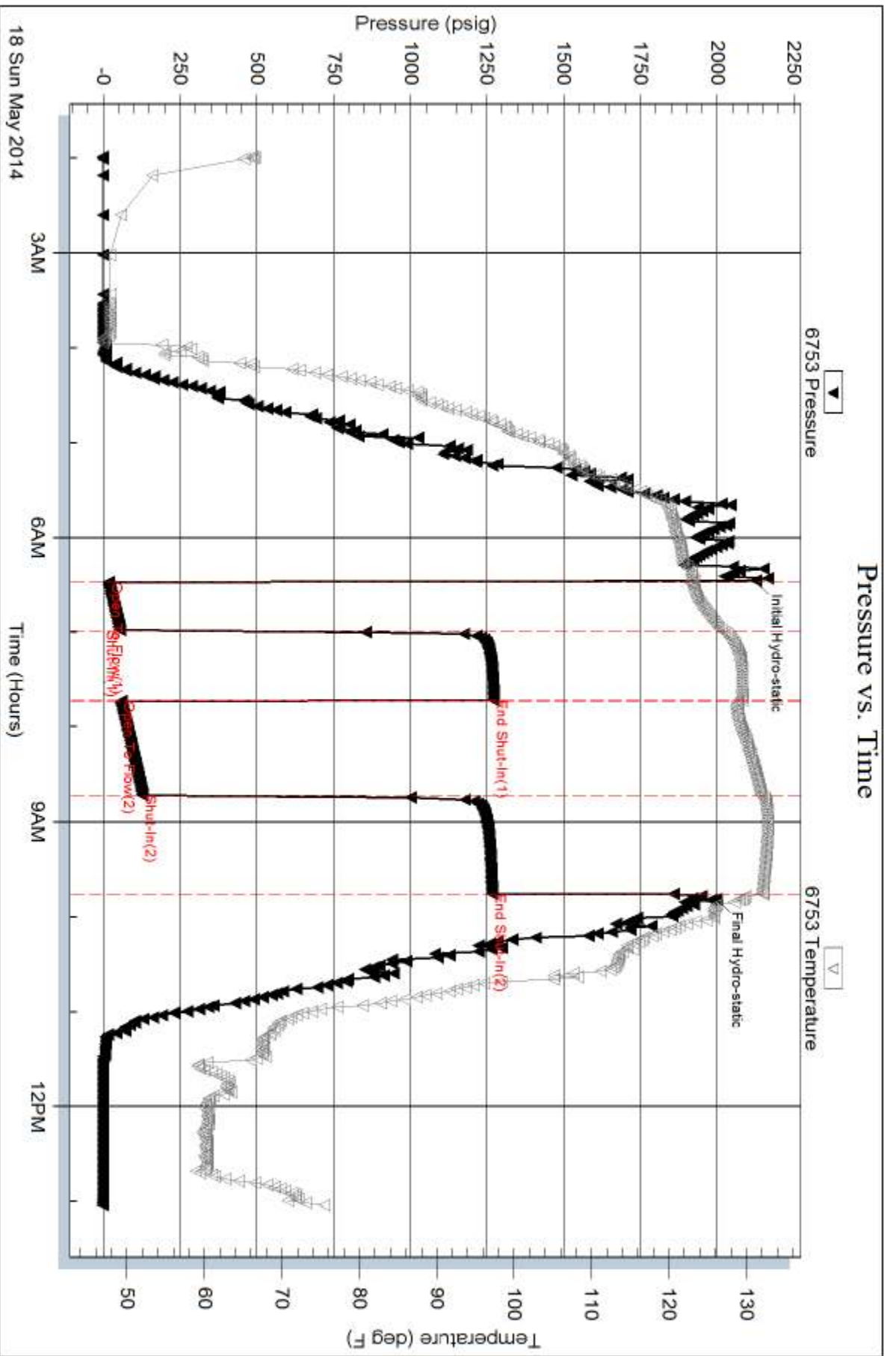
Serial #:

Laboratory Name:

Laboratory Location:

Recovery Comments:





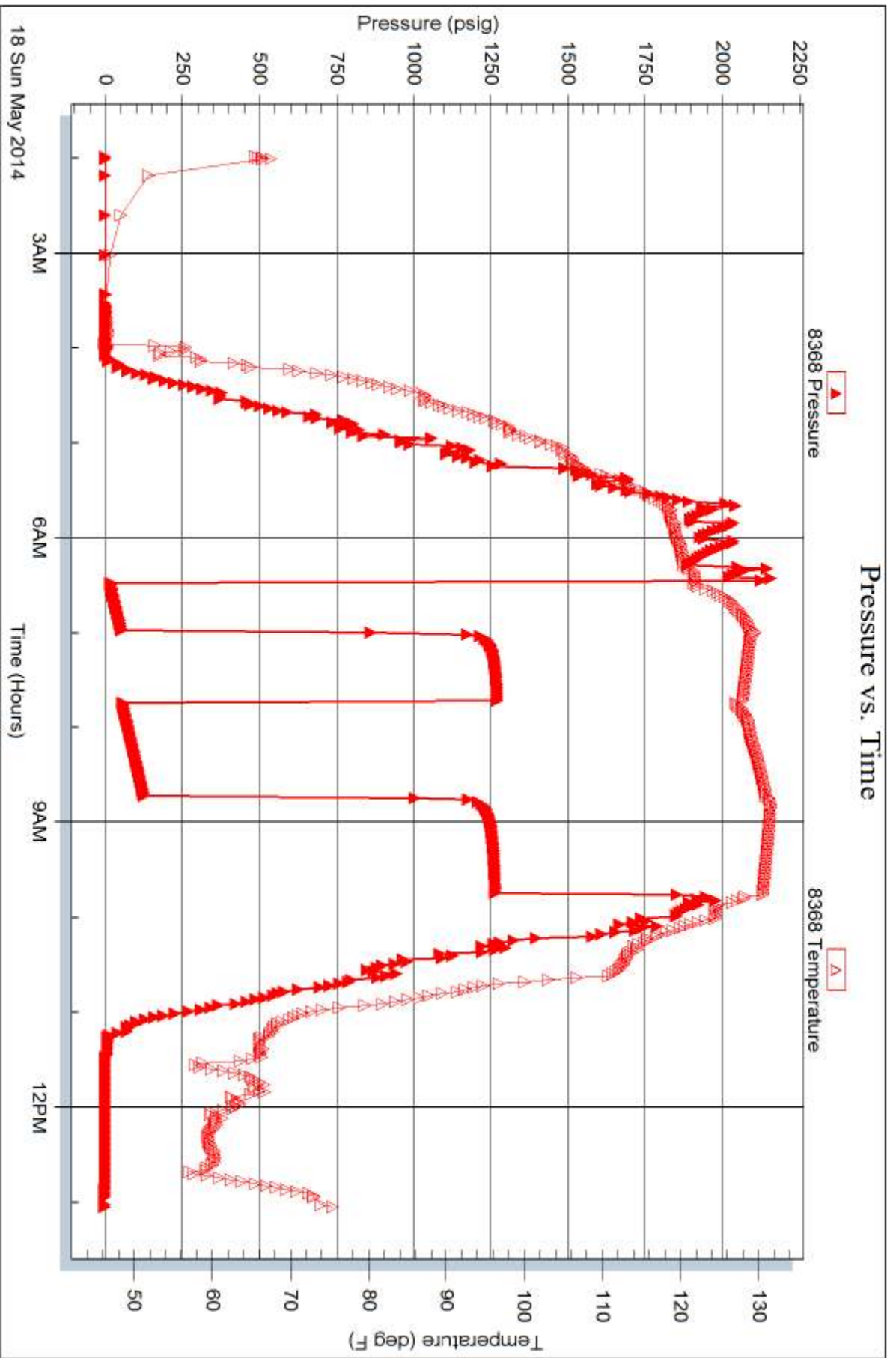
Serial #: 8368

Inside

Val Energy

Beach Bros #1-12

DST Test Number: 5



Trilobite Testing, Inc

Ref. No: 58301

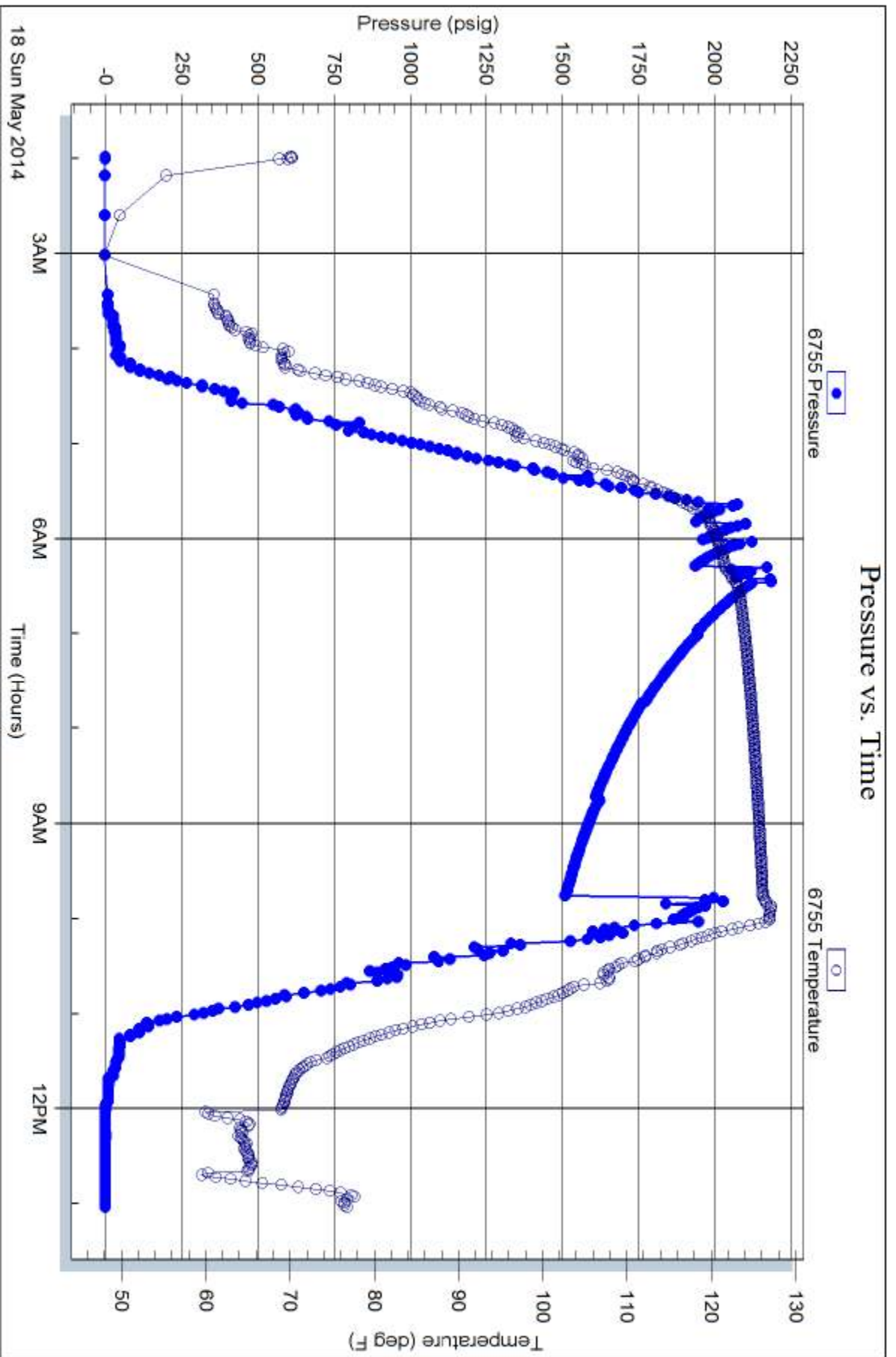
Printed: 2014.05.18 @ 15:37:17

Serial #: 6755

Below (Straddle) Energy

Beach Bros #1-12

DST Test Number: 5



Trilobite Testing, Inc

Ref. No: 58301

Printed: 2014.05.18 @ 15:37:18