



**Fall & Associates**  
 Stake and Elevation Service  
 719 W. 5<sup>th</sup> Street  
 P.O. Box 404  
 Concordia, KS. 66901  
 1-800-536-2821

Date 6-6-14

Invoice Number 0527141

FORESTAR PETROLEUM CORP.  
 Operator

1-26  
 Number

St. John  
 Farm Name

Rawlins-KS  
 County-State

26 1s 35w  
 S T R

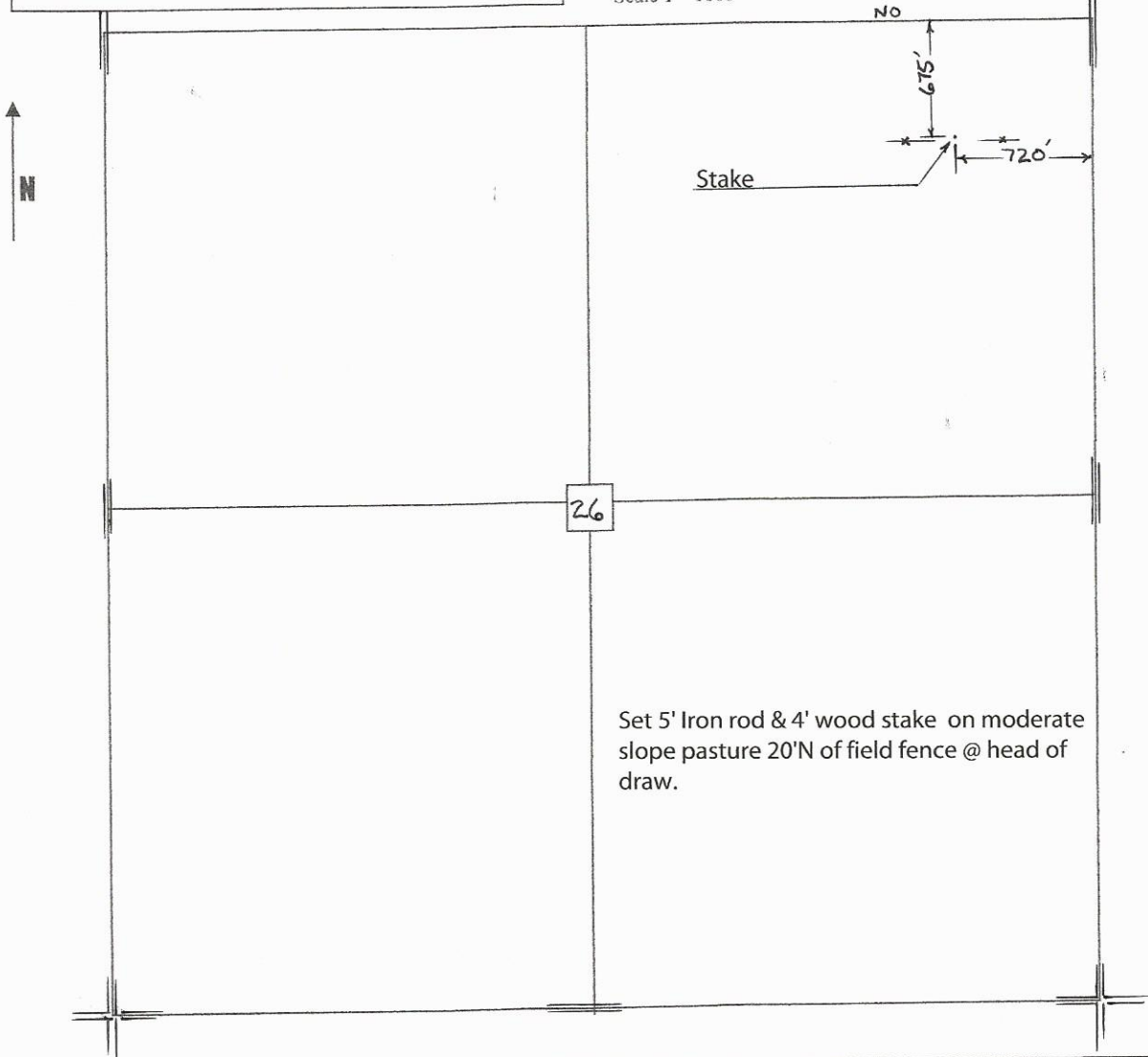
675'FNL 720'FEL  
 Location

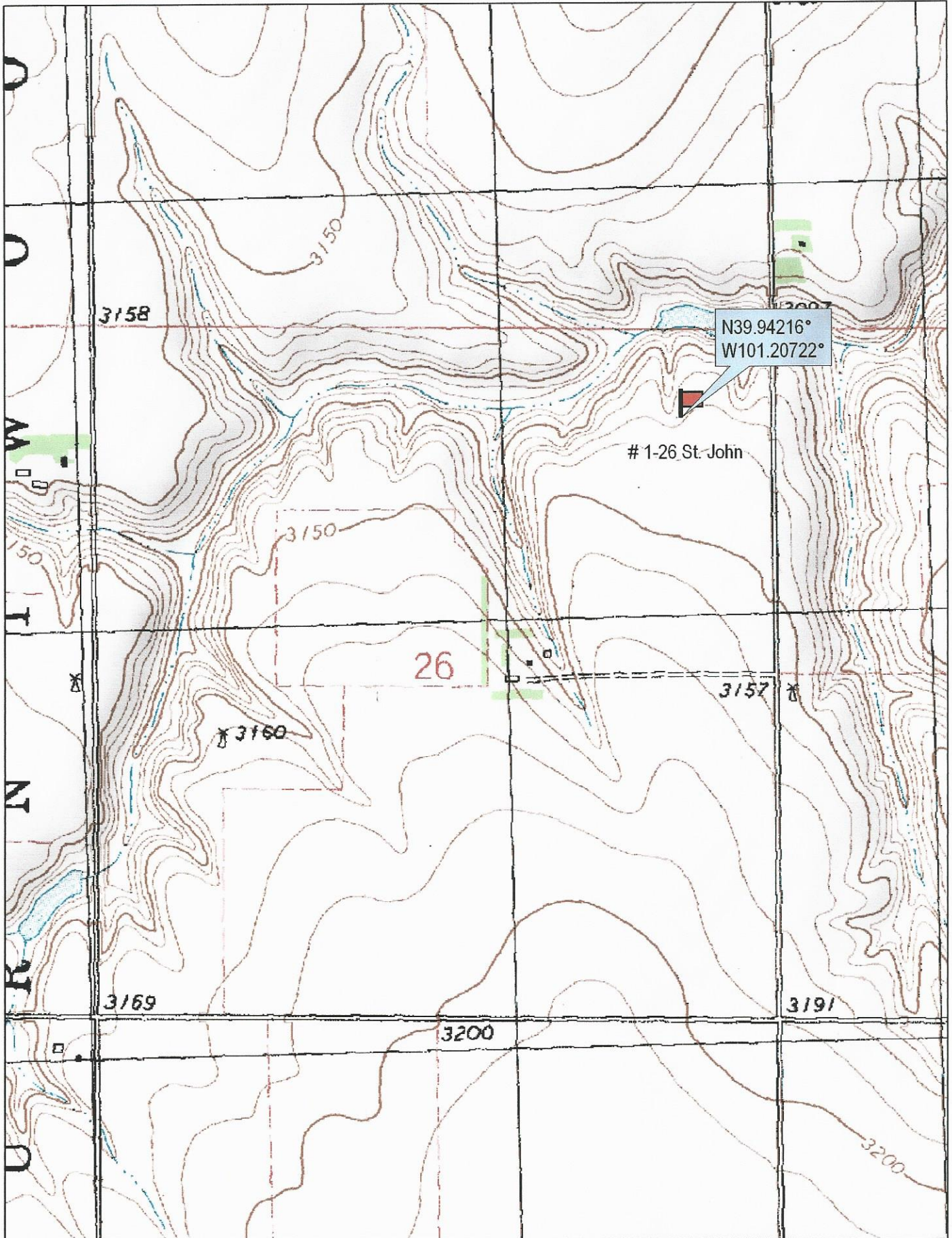
Forestar Petroleum Corp.  
 1801 Broadway  
 Suite 600  
 Denver, CO. 80202

Elevation 3127 gr.

Ordered By: Justin

Scale 1"=1000'





N39.94216°  
W101.20722°

# 1-26 St. John

26

3157

3158

3150

3150

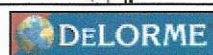
3160

3169

3200

3191

3200



© 2002 DeLorme. 3-D TopoQuads®. Data copyright of content owner.  
www.delorme.com

