

ADVANTAGE ELEVATIONS

OIL FIELD SURVEYORS

BOX 8604 - PRATT, KS 67124
(620) 672-6491

63133

INVOICE NO.

VAL ENERGY INC

OPERATOR

1-35

NO.

A & N

FARM

Cowley

COUNTY

35

S

32s

T

5e

R

NW SE SE NW

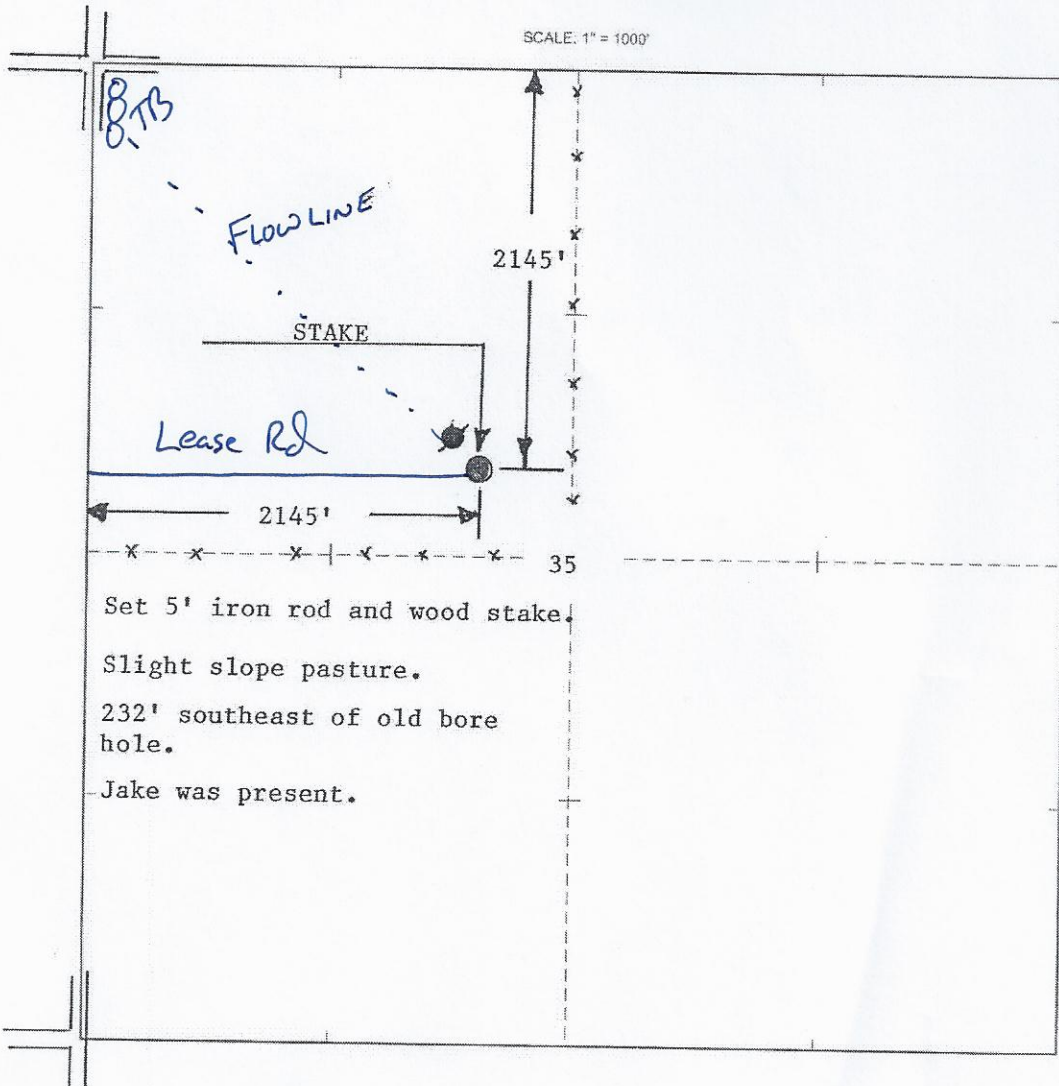
LOCATION

ELEVATION: 1282' GR

VAL ENERGY INC
200 W Douglas, STE 520
Wichita, KS 67202-3005



AUTHORIZED BY: Todd Allam



DATE STAKED: 6/3/14