



DRILL STEM TEST REPORT

Prepared For: **Carrie Exploration and Development L.L.C.**

210 West 22nd Street
Hays ,Kansas 67601

ATTN: Herb Deines

25-19s-11w

Lundgren #C-1

Start Date: 2010.12.20 @ 04:30:00

End Date: 2010.12.20 @ 00:00:00

Job Ticket #: 15757 DST #: 4

Superior Testers Enterprises LLC
PO Box 138 Great Bend KS 67530
1-800-792-6902

Printed: 2010.12.20 @ 20:19:14



DRILL STEM TEST REPORT

Carrie Exploration and Development L.L.C.

Lundgren #C-1

210 West 22nd Street
Hays ,Kansas 67601

25-19s-11w

Job Ticket: 15757

DST#: 4

ATTN: Herb Deines

Test Start: 2010.12.20 @ 04:30:00

GENERAL INFORMATION:

Formation: **Arbuckle**

Deviated: No Whipstock: ft (KB)

Time Tool Opened: 00:00:00

Time Test Ended: 00:00:00

Test Type: Conventional Bottom Hole (Initial)

Tester: Gene Budig

Unit No: 3335-36

Interval: 3278.00 ft (KB) To 3306.00 ft (KB) (TVD)

Reference Elevations: 1776.00 ft (KB)

Total Depth: 3306.00 ft (KB) (TVD)

1766.00 ft (CF)

Hole Diameter: 7.88 inches Hole Condition: Fair

KB to GR/CF: 10.00 ft

Serial #: 8524 Inside

Press @ Run Depth: 444.92 psia @ 3302.00 ft (KB)

Capacity: 5000.00 psia

Start Date: 2010.12.20

End Date: 2010.12.20

Last Calib.: 2010.12.20

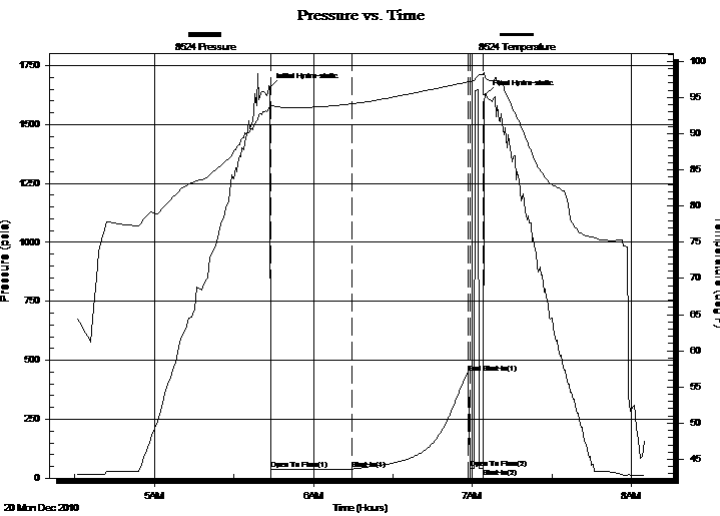
Start Time: 04:30:00

End Time: 08:05:00

Time On Btm: 2010.12.20 @ 05:43:30

Time Off Btm: 2010.12.20 @ 07:05:00

TEST COMMENT: 1st Opening 30 Minutes -w eak surface blow for 14 minutes and died
 1st Shut-In 45 Minutes-No blow back
 2nd Opening 05 Minutes-No blow -flushed tool-w eak blow for 3 minutes and died
 2nd SHut-In None taken



PRESSURE SUMMARY

Time (Min.)	Pressure (psia)	Temp (deg F)	Annotation
0	1657.63	93.71	Initial Hydro-static
1	36.17	93.86	Open To Flow (1)
31	38.85	94.14	Shut-In(1)
75	444.92	97.18	End Shut-In(1)
76	39.93	97.22	Open To Flow (2)
81	41.92	98.11	Shut-In(2)
82	1625.30	97.75	Final Hydro-static

Recovery

Length (ft)	Description	Volume (bbl)
15.00	Oil spotted Mu	0.21
0.00	there w as a good show of oil on top	0.00

Gas Rates

Choke (inches)	Pressure (psia)	Gas Rate (Mcf/d)



DRILL STEM TEST REPORT

Carrie Exploration and Development L.L.C.

Lundgren #C-1

210 West 22nd Street
Hays ,Kansas 67601

25-19s-11w

Job Ticket: 15757

DST#: 4

ATTN: Herb Deines

Test Start: 2010.12.20 @ 04:30:00

GENERAL INFORMATION:

Formation: **Arbuckle**

Deviated: No Whipstock: ft (KB)

Time Tool Opened: 00:00:00

Time Test Ended: 00:00:00

Test Type: Conventional Bottom Hole (Initial)

Tester: Gene Budig

Unit No: 3335-36

Interval: 3278.00 ft (KB) To 3306.00 ft (KB) (TVD)

Reference Elevations: 1776.00 ft (KB)

Total Depth: 3306.00 ft (KB) (TVD)

1766.00 ft (CF)

Hole Diameter: 7.88 inches Hole Condition: Fair

KB to GR/CF: 10.00 ft

Serial #: 6663 Outside

Press @ Run Depth: 449.01 psia @ 3303.00 ft (KB)

Capacity: 5000.00 psia

Start Date: 2010.12.20

End Date: 2010.12.20

Last Calib.: 2010.12.20

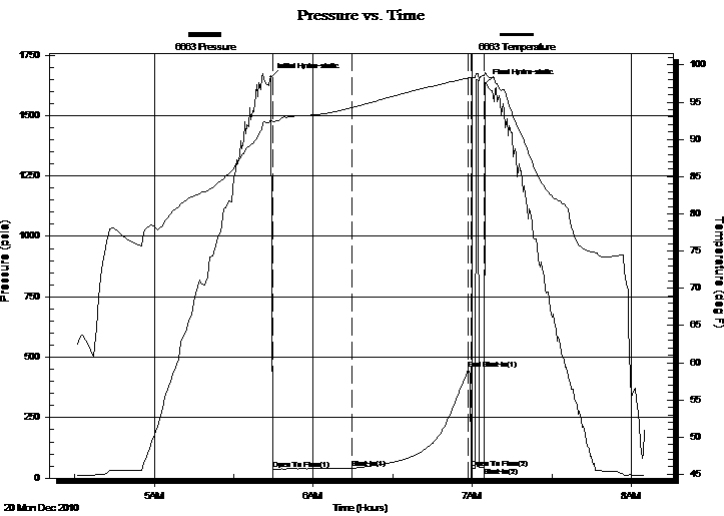
Start Time: 04:30:04

End Time: 08:05:04

Time On Btm: 2010.12.20 @ 05:44:04

Time Off Btm: 2010.12.20 @ 07:05:04

TEST COMMENT: 1st Opening 30 Minutes -w eak surface blow for 14 minutes and died
 1st Shut-In 45 Minutes-No blow back
 2nd Opening 05 Minutes-No blow -flushed tool-w eak blow for 3 minutes and died
 2nd SHut-In None taken



PRESSURE SUMMARY

Time (Min.)	Pressure (psia)	Temp (deg F)	Annotation
0	1658.44	92.61	Initial Hydro-static
1	37.70	92.32	Open To Flow (1)
31	40.16	94.27	Shut-In(1)
75	449.01	98.27	End Shut-In(1)
76	41.74	98.21	Open To Flow (2)
81	43.77	98.56	Shut-In(2)
81	1630.49	99.00	Final Hydro-static

Recovery

Length (ft)	Description	Volume (bbl)
15.00	Oil spotted Mu	0.21
0.00	there w as a good show of oil on top	0.00

Gas Rates

	Choke (inches)	Pressure (psia)	Gas Rate (Mcf/d)



DRILL STEM TEST REPORT

TOOL DIAGRAM

Carrie Exploration and Development L.L.C.

Lundgren #C-1

210 West 22nd Street
Hays ,Kansas 67601

25-19s-11w

Job Ticket: 15757

DST#: 4

ATTN: Herb Deines

Test Start: 2010.12.20 @ 04:30:00

Tool Information

Drill Pipe:	Length: 3288.00 ft	Diameter: 3.80 inches	Volume: 46.12 bbl	Tool Weight:	2000.00 lb
Heavy Wt. Pipe:	Length: 0.00 ft	Diameter: 2.76 inches	Volume: 0.00 bbl	Weight set on Packer:	20000.00 lb
Drill Collar:	Length: 0.00 ft	Diameter: 2.25 inches	Volume: 0.00 bbl	Weight to Pull Loose:	37000.00 lb
			<u>Total Volume: 46.12 bbl</u>	Tool Chased	0.00 ft
Drill Pipe Above KB:	30.00 ft			String Weight: Initial	32000.00 lb
Depth to Top Packer:	3278.00 ft			Final	32000.00 lb
Depth to Bottom Packer:	ft				
Interval between Packers:	28.00 ft				
Tool Length:	48.00 ft				
Number of Packers:	2	Diameter: 6.75 inches			
Tool Comments:					

Tool Description	Length (ft)	Serial No.	Position	Depth (ft)	Accum. Lengths
------------------	-------------	------------	----------	------------	----------------

Shut-In Tool	5.00			3263.00	
Hydraulic Tool	5.00			3268.00	
Packer	5.00			3273.00	20.00 Bottom Of Top Packer
Packer	5.00			3278.00	
Perforations	23.00			3301.00	
Recorder	1.00	8524	Inside	3302.00	
Recorder	1.00	6663	Outside	3303.00	
Bull Plug	3.00			3306.00	28.00 Bottom Packers & Anchor

Total Tool Length: 48.00



DRILL STEM TEST REPORT

FLUID SUMMARY

Carrie Exploration and Development L.L.C.

Lundgren #C-1

210 West 22nd Street
Hays ,Kansas 67601

25-19s-11w

Job Ticket: 15757

DST#: 4

ATTN: Herb Deines

Test Start: 2010.12.20 @ 04:30:00

Mud and Cushion Information

Mud Type: Gel Chem

Cushion Type:

Oil API:

deg API

Mud Weight: 9.00 lb/gal

Cushion Length: ft

Water Salinity: ppm

Viscosity: 52.00 sec/qt

Cushion Volume: bbl

Water Loss: 10.00 in³

Gas Cushion Type:

Resistivity: ohm.m

Gas Cushion Pressure: psia

Salinity: 5000.00 ppm

Filter Cake: 1.00 inches

Recovery Information

Recovery Table

Length ft	Description	Volume bbl
15.00	Oil spotted Mu	0.210
0.00	there w as a good show of oil on top	0.000

Total Length: 15.00 ft Total Volume: 0.210 bbl

Num Fluid Samples: 0

Num Gas Bombs: 0

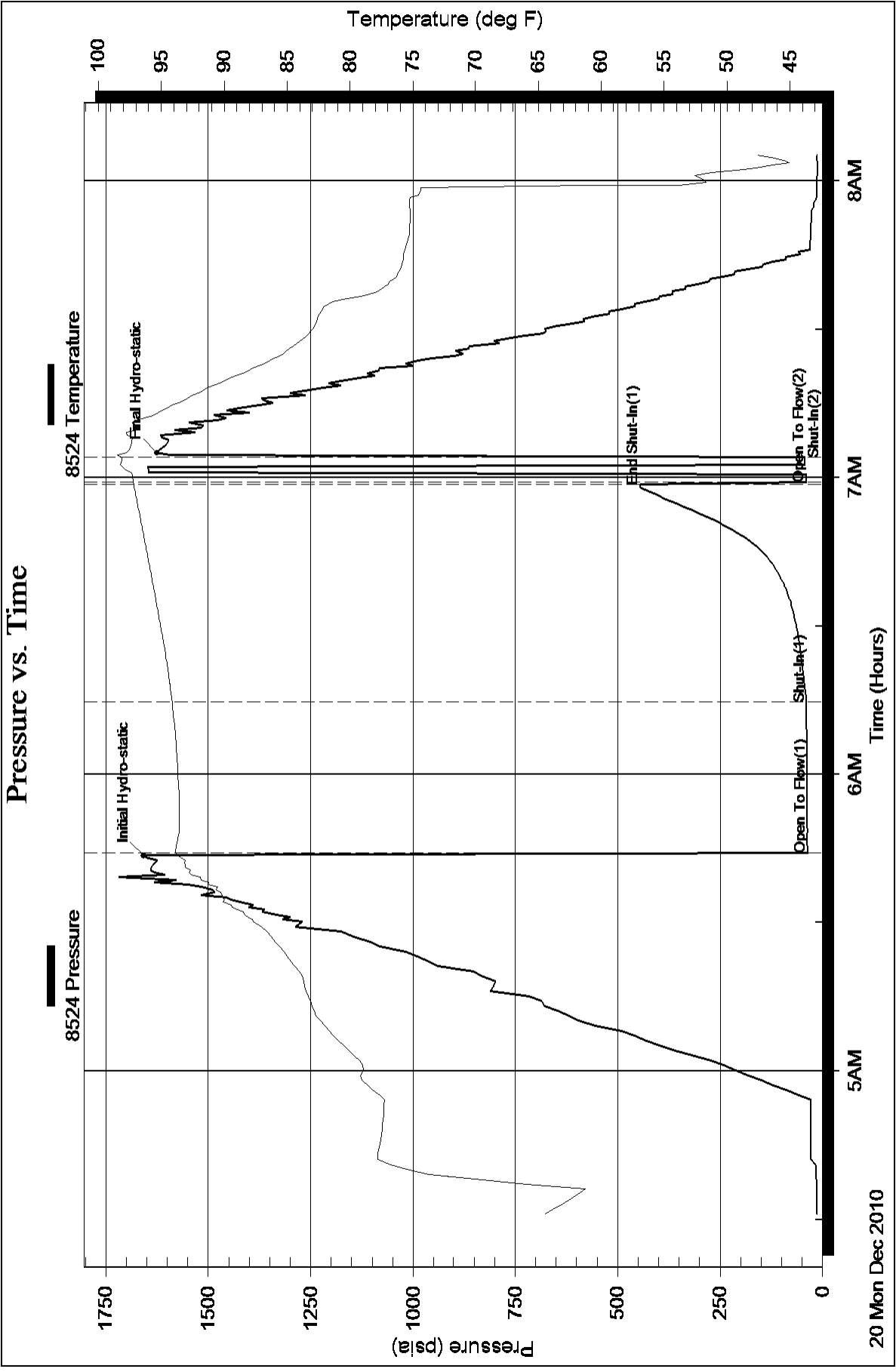
Serial #:

Laboratory Name:

Laboratory Location:

Recovery Comments:

Pressure vs. Time



Pressure vs. Time

