



Mudgrove

Geologist's Report

Company: Pauley Oil
 Lease: Katrina #3
 Field: Stoltenberg
 Location: S2-NW-SW-SW (800 FSL & 330 FWL)
 Sec: 15 Twsp: 16S Rge: 10W
 County: Ellsworth State: Kansas
 GL: 1889 KB: 1902

Contractor: Ninnescah Drilling
 Spud: 1/6/14 Comp: 1/12/14
 RTD: 3373 LTD: N/A
 Mud Up: 2600' Type Mud: Chemical/Displaced

Samples Saved From: 2700' to RTD
 Drilling Time Kept From: 2700' to RTD
 Samples Examined From: 2700' to RTD
 Geological Supervision From: 2800' to RTD
 Geologist on Well: Clint Musgrove

Surface Casing: 8 5/8" @ 440'

Logs: No Logs

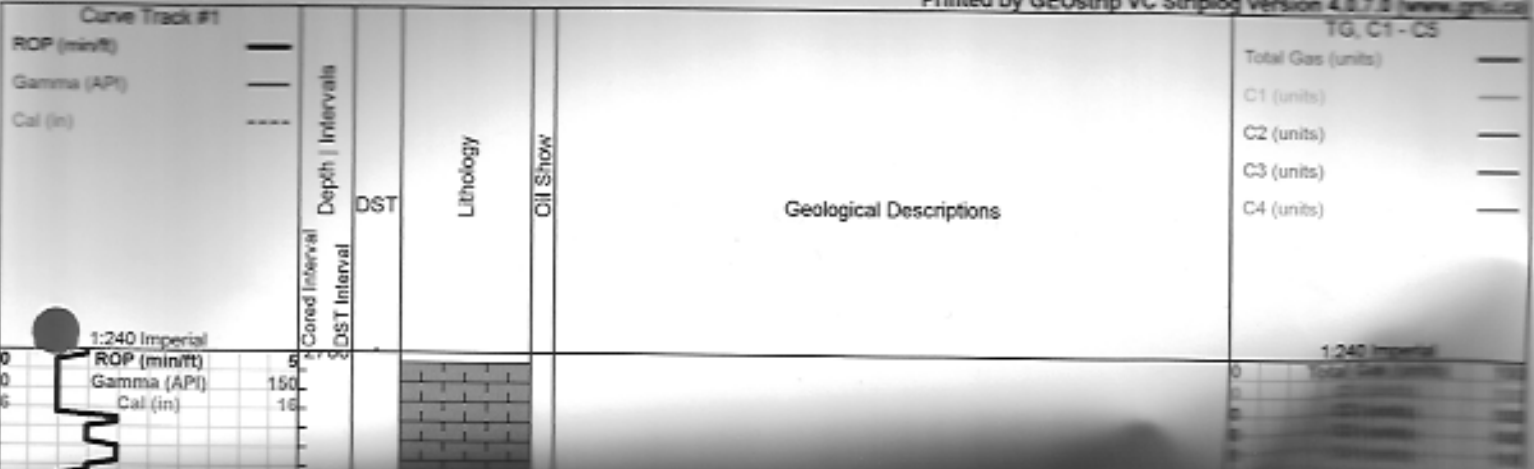
ROCK TYPES

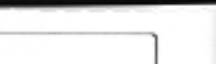
Dolomite Limestone >
 Limestone <7 shale, gr shale, red Sandstone
 Carbon Sh Shale

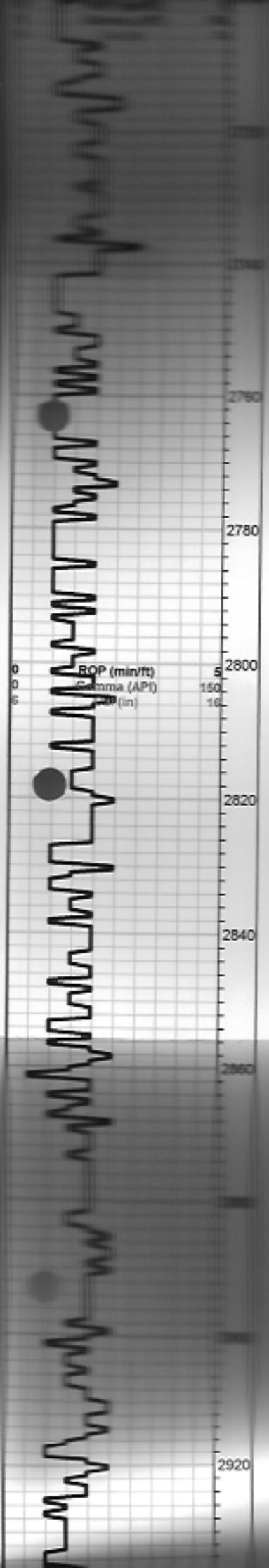
OTHER SYMBOLS

DST
 DST Int
 DST alt

Printed by GEOstrip VC Striplog version 4.8.7.8 (www.gnsi.ca)







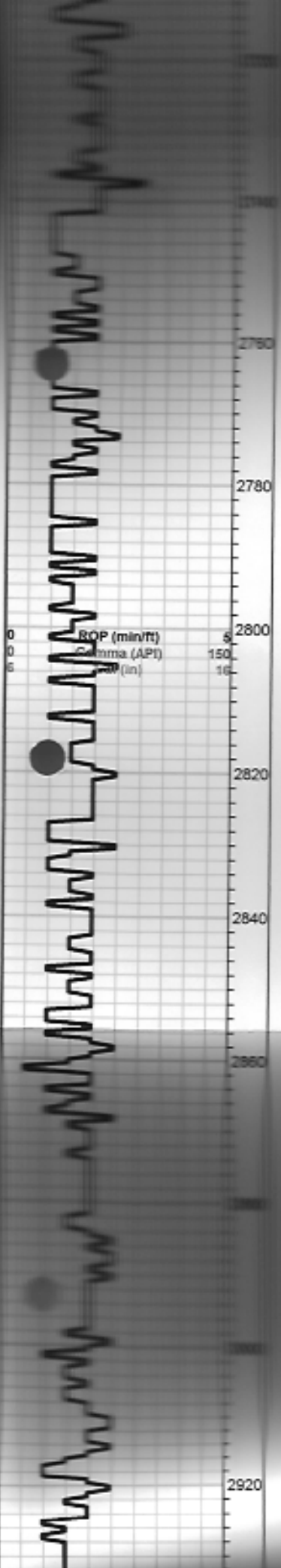
1	Total Gas (units)	100
2	C1 (units)	100
3	C2 (units)	100
4	C3 (units)	100
5	C4 (units)	100

0	Total Gas (units)	100
0	C1 (units)	100
0	C2 (units)	100
0	C3 (units)	100
0	C4 (units)	100

LS; gry/wh, chlky, poor poristy, n/s, no odor

LS; wh, ool in part, fl brn str, n/s, no odor

Heebner 2914.0 (-1012.0)
Blk carb sh



ROP (min/ft) 5
 Gamma (API) 150
 Gamma (in) 16

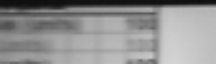
0	Total Gas (units)	100
0	C1 (units)	100
0	C2 (units)	100
0	C3 (units)	100
0	C4 (units)	100

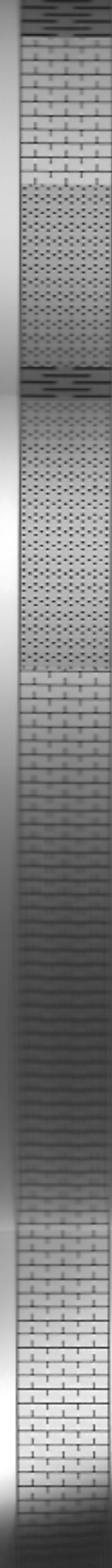
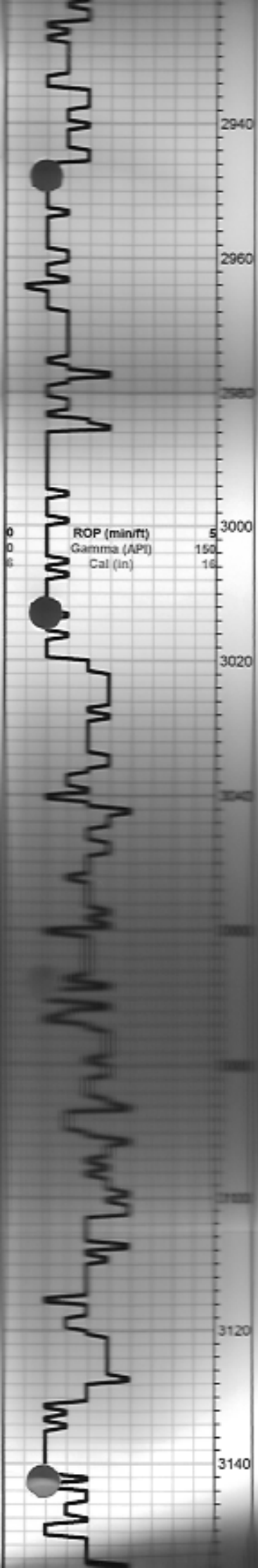
LS; gry/wh, chlky, poor poristy, n/s, no odor

LS; wh, ool in part, ft brn str, n/s, no odor

Heebner 2914.0 (-1012.0)

Blk carb sh





Toronto 2932.0 (-1030.0)

LS; wh/crm, chlky, n/s, barren

Douglas 2946.0 (-1044.0)

Sand, dirty gry, vfg, poorly sorted, poor porosity, + mica

aa + gr sh

Sand, vfg, mica, poorly developed porosity

aa

Brown Lime 3019.0 (-1117.0)

LS; brn, dense, cherty in part

Lansing 3042.0 (-1140.0)

LS; tan, fxl, scatt porosity, n/s

LS; gry, highly cherty, n/s

LS; crm, tan, good porosity, some fxl, n/s, n/s

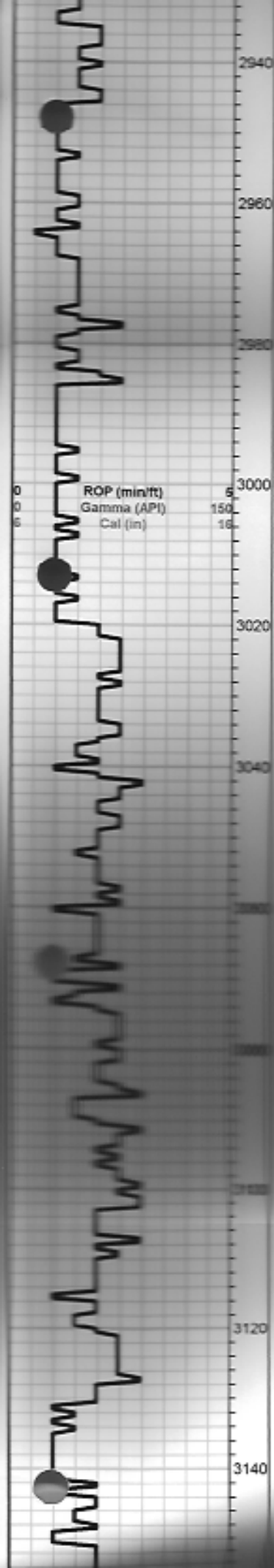
LS; tan, fxl, dense

LS; tan/brn, fxl, slightly ool, dense, poor porosity

LS; crm/tan, fxl, cherty in part, scatt porosity, n/s

LS; crm, cherty, chlky, n/s, n/s

0	Total Gas (units)	100
0	C1 (units)	100
0	C2 (units)	100
0	C3 (units)	100
0	C4 (units)	100



Toronto 2932.0 (-1030.0)

LS; wh/crm, chlky, n/s, barren

Douglas 2946.0 (-1044.0)

Sand, dirty gry, vfg, poorly shorted, poor porosity, + mica

aa + gr sh

Sand, vfg, mica, poorly developed porosity

aa

Brown Lime 3019.0 (-1117.0)

LS; brn, dense, cherty in part

Lansing 3042.0 (-1140.0)

LS; tan, fxl, scatt porosity, n/s

LS; gry, highly cherty, n/s

LS; crm/tan, good porosity, some fl, variable str, n/s

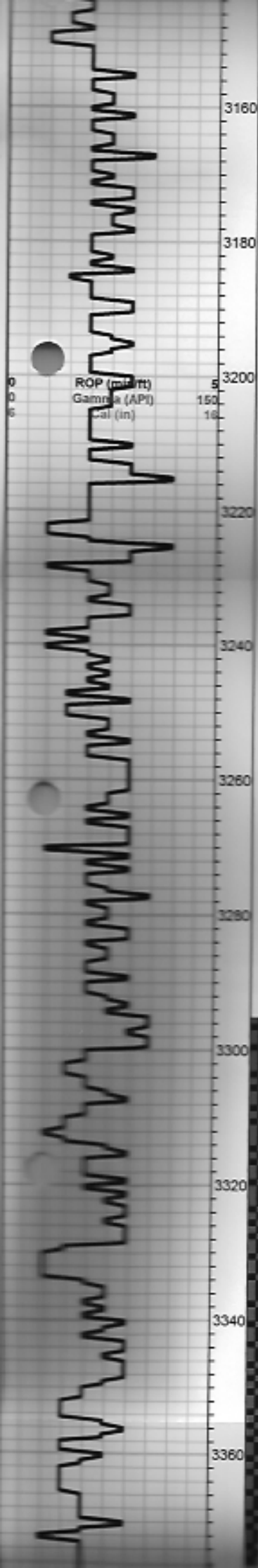
LS; tan, fxl, cherty in part, dense

LS; tan/brn, fxl, slightly ool, dense, poor porosity

LS; crm/tan, fxl, cherty in part, scatt porosity, n/s

LS; crm, cherty, cherty, n/s, no ool

0	Total Gas (units)	100
0	C1 (units)	100
0	C2 (units)	100
0	C3 (units)	100
0	C4 (units)	100



LS; crm/tan, good porosity, oom, barren n/s

LS; tan, fxl, foss in part, tan chert, n/s, no odor

LS; crm, foss, oom, ool, poorly developed porosity n/s

LS; crm/tan, ool, ft bk stn n/s, no odor

LS; tan/crm, cherty, dense

LS; crm, fxl, ft blk stn, n/s

LS; crm, fxl, gry chert, chlky, n/s

LS; gry, med xl, far foss, chalky

aa

v.c sh

BKC 3308.0 (-1406.0)

LS; crm, foss, oom, tr red sh

LS: crm cherty, oom, scatt porosity n/s

LS; crm, fxl, dense, ft bk stn, n/s, no odor

Simpson 3340.0 (-1438.0)

Sand; wh, rounded, poor porosity, n/s

Simpson Sand 3357.0 (-1455.0)

Sand; gr, wh, fxl, scatt porosity, sfo, no odor
Blue/green tuq. sh

Arbuckle 3370.0 (-1468.0)

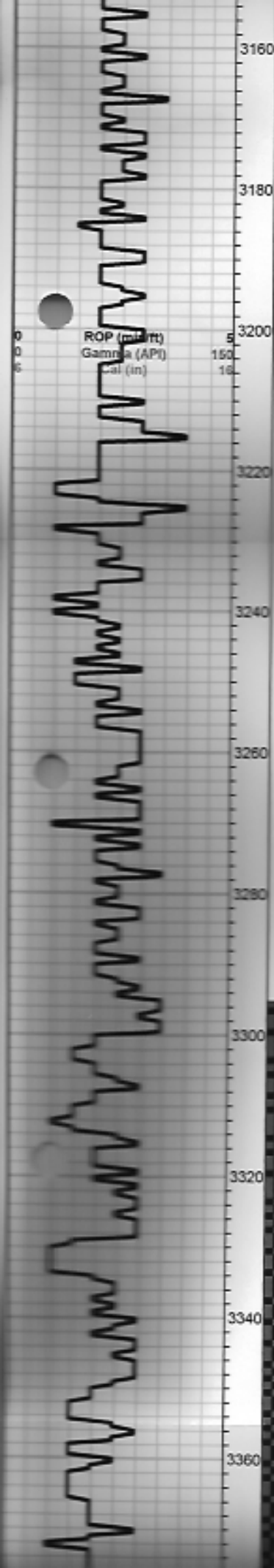
Dol; tan, medxl, scatt porosity, oom in part, sfo.

Total Gas (units)	100
C1 (units)	100
C2 (units)	100
C3 (units)	100
C4 (units)	100

DST #1
3296-3373
10-30-30-45
BOB 3 min

Recovery:
60' SGOCM (10% gas, 10% oil 80% mud)
185' GMCO (30% gas 50% oil 20% mud)
440' GO (30% gas 70% oil)
315' GOCM (20% gas, 25% oil 55% mud)
130' GO (30% gas 70% oil)

Pressures:
ISIP: 1086 psi
FSIP: 1088 psi
IF: 51-150 psi
FF: 172-442 psi



LS; crm/tan, good porosity, oom, barren n/s

LS; tan, fxl, foss in part, tan chert, n/s, no odor

LS; crm, foss, oom, ool, poorly developed porosity n/s

LS; crm/tan, ool, ft bk stn n/s, no odor

LS; tan/crm, cherty, dense

LS; crm, fxl, ft blk stn, n/s

LS: crm, fxl, gry chert, chilky, n/s

LS; gry, med xl, far foss, chalky

aa

v.c sh

BKC 3308.0 (-1406.0)
LS; crm, foss, oom, tr red sh

LS: crm cherty, oom, scatt porosity n/s

LS; crm, fxl, dense, ft bk stn, n/s, no odor

Simpson 3340.0 (-1438.0)
Sand; wh, rounded, poor porosity, n/s

Simpson Sand 3357.0 (-1455.0)
Sand; gr, wh, fxl, scatt porosity, sfo, no odor
Blue/green tuq. sh

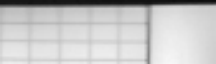
Arbuckle 3370.0 (-1468.0)
Dol; tan, med xl, scatt porosity, oom in part, sfo

Total Gas (units)	100
C1 (units)	100
C2 (units)	100
C3 (units)	100
C4 (units)	100

DST #1
3296-3373
10-30-30-45
BOB 3 min

Recovery:
60' SGOCM (10% gas, 10% oil 80% mud)
185' GMCO (30% gas 50% oil 20% mud)
440' GO (30% gas 70% oil)
315' GOCM (20% gas, 25% oil 55% mud)
130' GO (30% gas 70% oil)

Pressures:
ISIP: 1086 psi
FSIP: 1088 psi
IF: 51-150 psi
EE: 172-442 psi



Sand; gr, wh, txl, scatt porosity, sfo, no odor

Blue/green tuq. sh

● **Arbuckle 3370.0 (-1468.0)**

● Dol; tan, medxl, scatt porosity, oom in part, sfo,
● very ft odor

RTD 3373.0 (-1471.0)

ISIP: 1086 psi

FSIP: 1088 psi

IF: 51-150 psi

FF: 172-442 psi

HSH: 1684-1619 psi

3380

3380

- RTD 3373.0 (-1471.0)
- Dol; tan, medxl, scatt porosity, oom in part, sfo,
- very ft odor

RTD 3373.0 (-1471.0)

FF: 172-442 psi
HSH: 1684-1619 psi

