



**TRIOBITE  
TESTING, INC**

## DRILL STEM TEST REPORT

Pauley, Gary dba Pauley Oil

15-16s-10w Ellsworth, KS

314 5th St  
Clafin KS 67535

**Katrina #3**

Job Ticket: 55495

**DST#: 1**

ATTN: Clint Musgrove

Test Start: 2014.01.12 @ 01:05:00

### GENERAL INFORMATION:

Formation: Arb

Deviated: No Whipstock: ft (KB)

Time Tool Opened: 04:14:45

Time Test Ended: 09:03:00

Test Type: Conventional Bottom Hole (Initial)

Tester: Brett Dickinson

Unit No: 59

Interval: 3296.00 ft (KB) To 3373.00 ft (KB) (TVD)

Total Depth: 3373.00 ft (KB) (TVD)

Hole Diameter: 7.88 inches Hole Condition: Fair

Reference Elevations: 1899.00 ft (KB)

1891.00 ft (CF)

KB to GR/CF: 8.00 ft

Serial #: 8319 Inside

Press@RunDepth: 441.71 psig @ 3305.00 ft (KB)

Start Date: 2014.01.12

End Date: 2014.01.12

Start Time: 01:05:00

End Time: 09:03:00

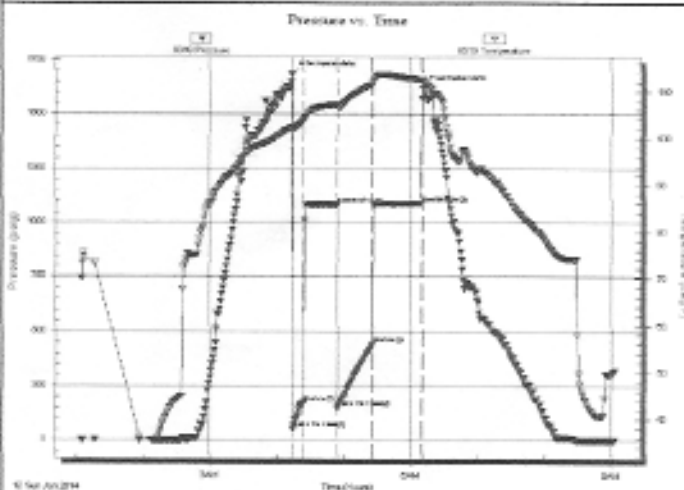
Capacity: 8000.00 psig

Last Calib.: 2014.01.12

Time On Btm: 2014.01.12 @ 04:13:45

Time Off Btm: 2014.01.12 @ 06:11:30

TEST COMMENT: IF-BOB in 3min  
ISI-No blow  
FF-BOB in 3min  
FS-No blow



### PRESSURE SUMMARY

Time (Min.)	Pressure (psig)	Temp (deg F)	Annotation
0	1683.50	102.21	Initial Hydro-static
1	51.35	101.68	Open To Flow (1)
11	172.24	103.85	Shut-In (1)
41	1086.45	107.12	End Shut-In (1)
41	149.83	106.84	Open To Flow (2)
72	441.71	111.44	Shut-In (2)
117	1088.11	112.47	End Shut-In (2)
118	1618.99	112.36	Final Hydro-static

### Recovery

Length (ft)	Description	Volume (bbl)
60.00	SGOCM 10%G 10%O 80%M	0.84
185.00	GMCO 30%G 20%M 50%O	2.60
440.00	GO 30%G 70%O	6.17
315.00	GOCM 20%G 25%O 55%M	4.42
130.00	GO 30%G 70%O	1.82
0.00	120ft GIP	0.00

### Gas Rates

Choke (inches)	Pressure (psig)	Gas Rate (Mcf/d)