



Office (620) 588-4250 212 Main St. • P.O. Box 215 • Clarlin, KS 67525
 Home (620) 587-3444

GEOLOGIST'S REPORT

DRILLING TIME AND SAMPLE LOG

COMPANY Blueridge Petroleum Corp.
 LEASE Carter #1-35
 FIELD Windcat
 LOCATION Se. Ne-SW-SW (880' FSL & 1014' FwL)
 SEC 35 TWP 3 S RGE 27 W
 COUNTY Decatur STATE Kansas
 CONTRACTOR Yak Energy Co. (rig # 7)
 SPUD 5/22/14 COMP 5/29/14
 RTD 3780 LTD 3780 CHEM. CAL displaced
 MUD UP 3100 + TYPE MUD chem. cal

SAMPLES SAVED FROM 3200 TO 3200
 DRILLING TIME KEPT FROM 3200 TO RTD
 SAMPLES EXAMINED FROM 3200 TO TO
 GEOLOGICAL SUPERVISION FROM 3370 TO TO
 GEOLOGIST ON WELL Jim Musgrove

FORMATION TOPS	LOG	SAMPLES
<u>Anhydrite</u>	<u>2140 +466</u>	
<u>Base Anhydrite</u>	<u>2171 +435</u>	
<u>Topoka</u>	<u>3324 -718</u>	
<u>Hesner</u>	<u>3492 -886</u>	
<u>Toronto</u>	<u>3520 -914</u>	
<u>Unsting</u>	<u>3633 -927</u>	
<u>Base Kansas City</u>	<u>3729 -1123</u>	
<u>RTD</u>	<u>3780 -1174</u>	
<u>LTD</u>	<u>3780 -1174</u>	

ELEVATIONS

KB 2606

DF

GL 2596

Measurements Are All From KB

SURFACE CASING 85/8 1/2 221

PRODUCTION none

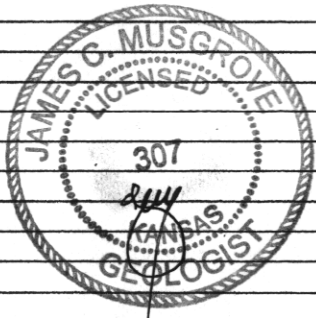
ELECTRICAL SURVEYS

By Nabors. Dual induction, compensated Density/Neutron, RT log, & micro and Sonic.

REMARKS

The Carter #1 was plugged & abandoned at the RTD 3780(-1174)

Respectfully submitted,
 James C. Musgrove
 Petroleum Geologist



LEGEND

Anhydrite	Salt	Sandstone	Shale	Carb sh	Limestone	Ool. Lime	Chert	Dolomite

DRILLING TIME

5057

7077 301

454

LITHOLOG

DEPTH

DRILLING TIME
(Logarithmic Scale)

SAMPLE DESCRIPTIONS

REMARKS

.5 1 2 3 4 5 10 15 20 30

20

40

60

80

3300

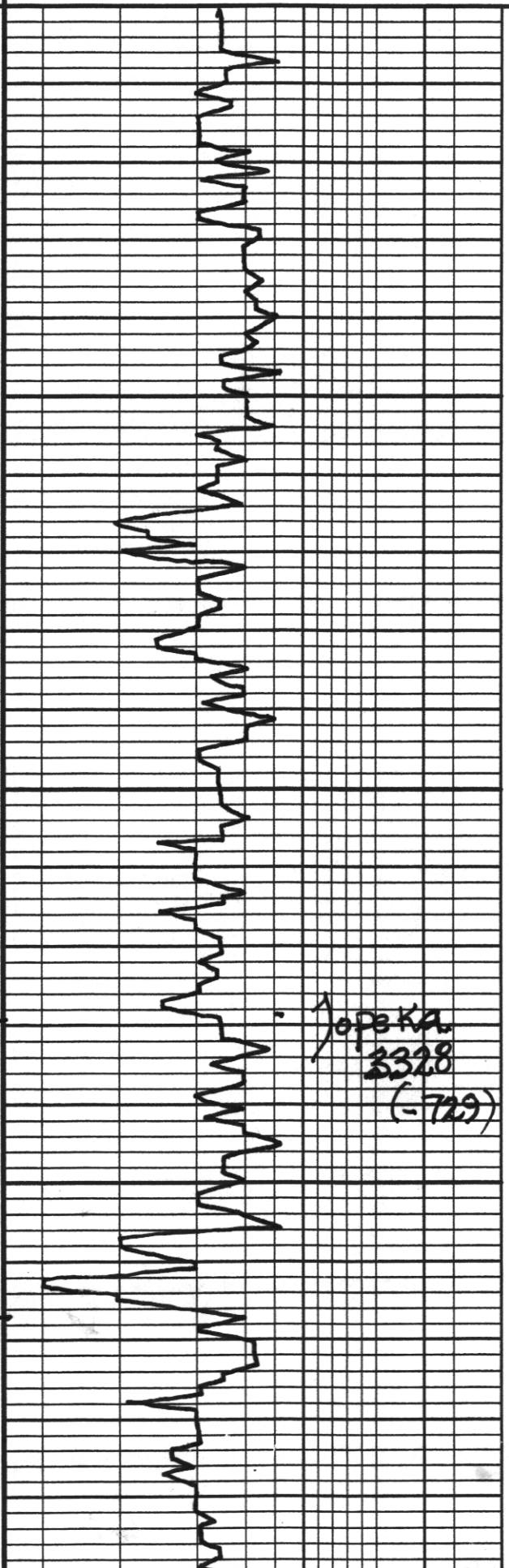
20

40

60

80

3400



~~3599~~? KB-
2606
Corrected

~ grey/red - brick red brown
silty sh

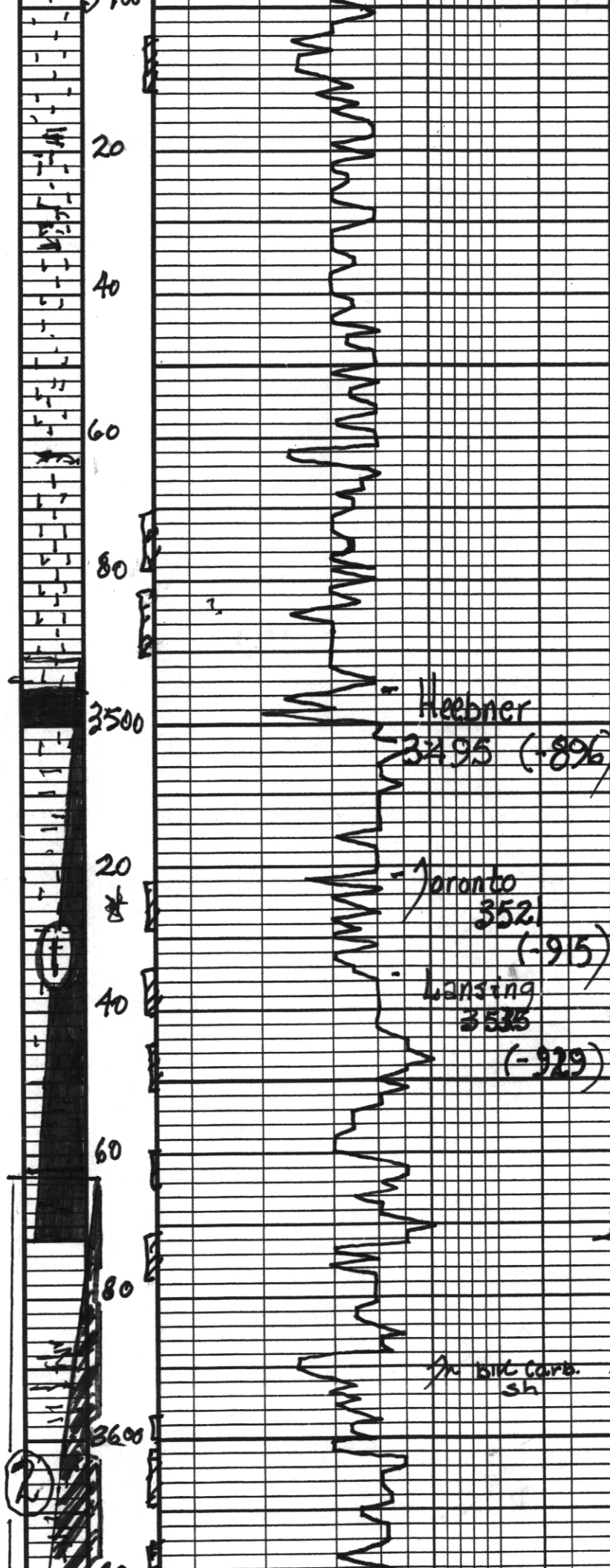
Top of KA
3328
(-72.9)

LS, wh/gry; ool; slighty
cherty; FeS_2
~
~

~ grey green / mar - brick red
silty sh. / calc siltsstone

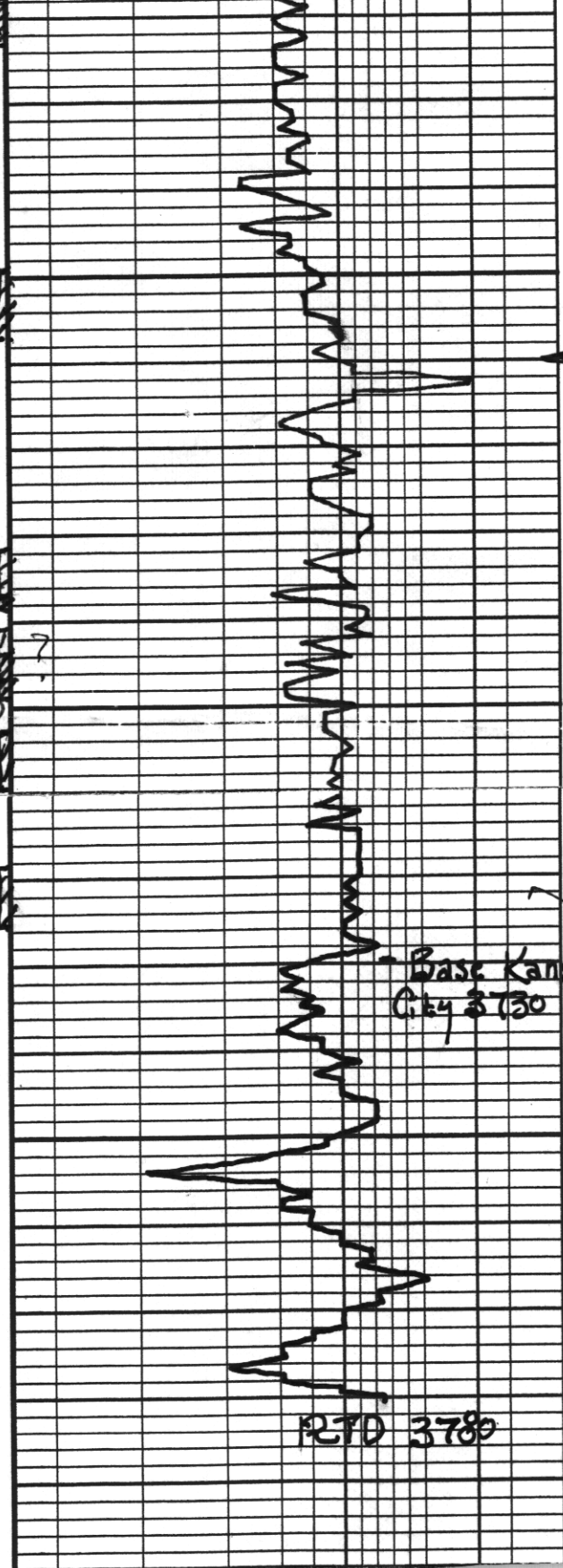
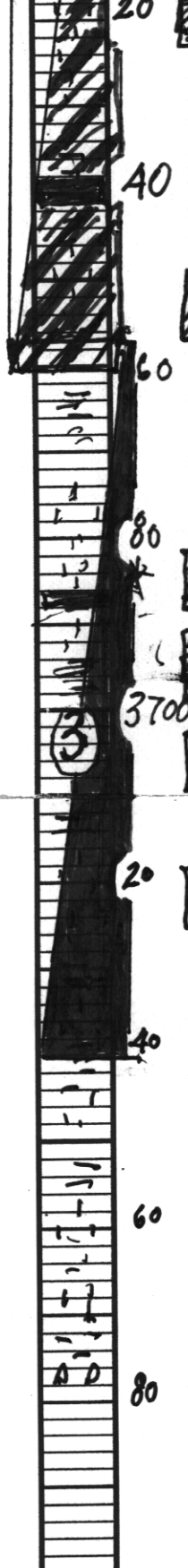
LS, gry/wh, f - med x L;
foss: cherty; FeS_2
~
~

LS, (L), highly foss, fr o'



~ ls, wh; gray, foss, cherty
 few sh, sparry calcite
 cement
 ~ Jr. blk carb. sh
 ~ gray/green silty carb. sh
 ls, wh; gray/crm (x'l),
 few foss, cherty
 poor of sh
 ~ blk carb. sh
 ls, wh, foss, cherty, poor of sh
 Jr. blk tarry sh, no odor
 ~ aa + wh A
 ~ slug blk carb. sh.
 ~ musty brn; silty sh
 few dolomitic nt
 ls, wh/crm (x'l; ool. st. sh)
 cherty in part, brown sh;
 spo. ? odor.
 ls, wh/gray, ool. cherty
 good sh
 ls, gray, wh, foss, cherty
 Jr. sh, spo, no odor
 ls, crm, wh, f med sh
 ool, cherty in part, brown
 sh, spo, ??? odor
 ls, wh/crm, foss, cherty
 Jr. brown sh, spo
 no odor
 ~ man./brick red soft sh
 + Jr. gray/sandstone approx
 ls, tan, foss, cherty
 Jr. poor brown sh, Jr. sh,
 no odor.

Dst # 1 3491-3572
 45-30-45-60
 Blow, string
 (Bob 38 mins)
 2nd opening, string/good
 (10 1/2 inches)
 Rec; 8' mud cut oil
 (80% oil; 20% mud)
 186' slightly oil
 cut watery mud
 (89% oil; 38% water
 54% mud)
 Pressures: Isip 1132
 fsi p 1143
 Isip 13-61
 fsi p 65-101
 HSH
 1674
 -1668 psi
 Dst # 2 3563-3660
 30-30-45-60
 Blow, string
 (Bob 12 1/2")
 2nd opening, string
 (Bob 15 min)



(L.S.) wh/gry, fxl, oil in part) brown/sh. wk. sfo, no odor
 mar/brick red, gummy soft sh. 7r. blk carb. sh
 L.S. wh/crm, fxl, oil/foss chky in part, cast. vuggy, brown sh, 7r. sp, no odor
 mar/rusty brown/green silty sh.
 L.S. crm; wh; oil; chky in part; fr. sh/sst; 5r. sh; sfo/gassy; no odor
 gry/mar/brick red sh.
 L.S. wh/gry/crm, oil, sst, fr. brown sh, 7r. sp
 L.S. crm, wh, chky; oil/foss 7r. sh, sfo; no odor
 Base Kansas City 3730
 L.S. wh, fxl, chky; blk/gry sh; sfo; no odor
 gry/mar silty sh
 gry tan tinted L.S.
 mar/brick red, purplish gry soft silty sh.
 mar/tinted L.S. 7r. wh A

Rec; 240 gas in pipe
 70' clean oil
 62' oil gas cut
 muddy water (270 gas) 1870 oil
 33% water; 47% mud
 62' slightly oil gas cut/muddy water (490 gas; 590 oil) 590 water 40% mud
 186' 50% CMW 79% H₂O (490 gas; 270 oil) 15% mud
 - new bit changed bit
 Pressures; Isip 1162 psi
 fsip 1163
 Ifp 20-97
 fsp 103-182
 HSH 1734-1725 psi
 DST #3 3657-3740
 45-30-30-45
 Blow, weak (died 28 mins)
 2nd opening; none
 Rec; 5' slightly oil cut/mud (590 oil) 95% mud
 Pressures; Isip 40 psi
 fsip 36
 Ifp 12-14
 fsp 15-15
 HSH 1783 -1780 psi

RTD 3780